



Single Reflex Bandpass Subwoofer



Model: 20115S

Advantages of Bandpass Design

The bandpass design offers many distinct advantages over traditional vented subwoofers:

No External Crossover Required

Louder - 97dB(1w,1m) - Much more efficient than front loaded designs

More Power - Up to 1200 watts Total Power Handling

Less Distortion - Eliminating the high frequencies reduces upper harmonic distortion.

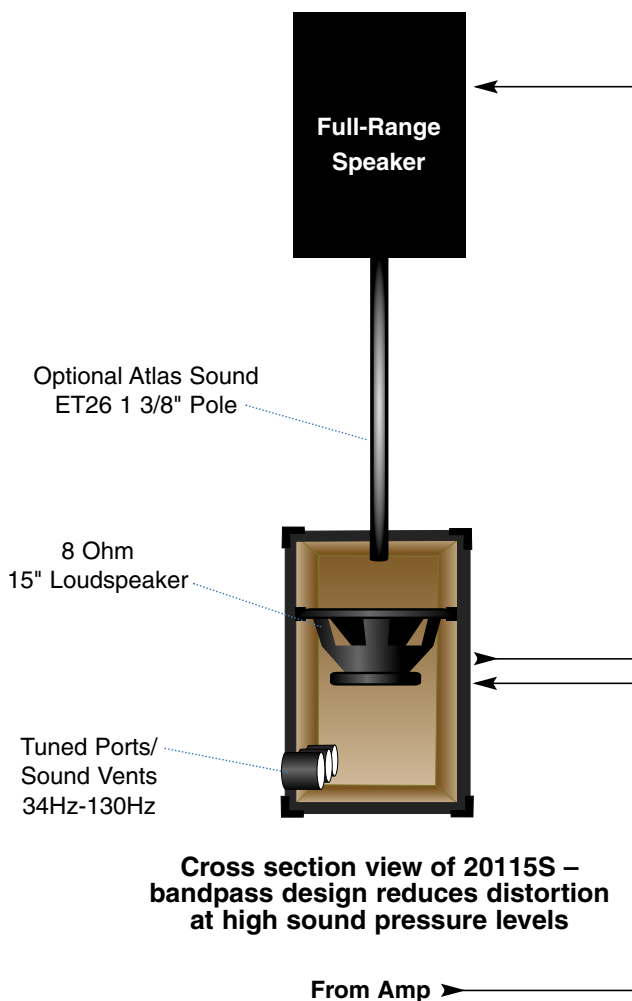
Improved Reliability - The sealed upper chamber helps protect your subwoofer from excursion damage caused by demanding low frequencies. In addition, the woofer is fully encased within the cabinet, protecting it from physical damage.

The 20115S bandpass subwoofer system is designed on a practical "Plug 'n Play," concept. From your existing amp, connect the full-range signal to one of the parallel jacks on the 20115S. Connect this same signal out through the second parallel jack to your choice of a full-range speaker. Use either of the Atlas Sound 1000 or 2000 Series Loudspeakers in this configuration or finally add bass to your current speakers.

Low Bass Makes the Difference!

The Atlas Sound 20115S provides a simple way to immediately add bass to your system. The bandpass enclosure design with a 15" subwoofer features a sealed upper chamber, with a tuned port lower chamber that acoustically eliminates frequencies above 130 Hz. This way, there is no need for external crossovers.

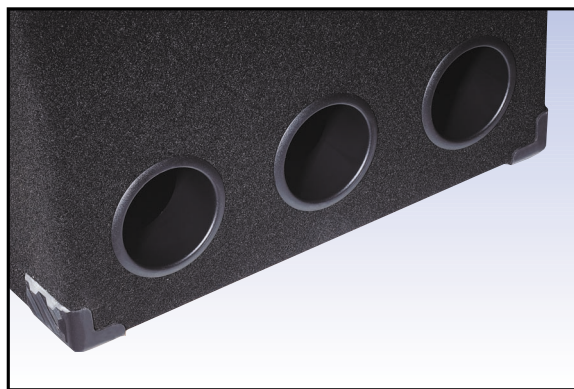
Like the 1000 and 2000 Series full-range cabinets, the Bandpass Subwoofer is made from high quality, oriented strand board with fully interlocking dado construction. You get a great sounding, strong, easily portable enclosure that withstands abuse.



Atlas Sound
www.AtlasSound.com
1.800.876.3333

Performance Characteristics

The 20115s is constructed using dado interlocking construction methods out of strong, lightweight, Oriented Strand Board (OSB) Heavy-duty handles are ergonomically located for carrying comfort. Rugged, interlocking corner pieces allow for easy, secure cabinet stacking. A 1 $\frac{3}{8}$ " pole mount cap is included for mounting of a full range speaker. The ATLAS ET26 black steel mounting pole is available as an accessory for this purpose. Inputs include (2) parallel Neutrix four pole "speak-on" jacks and (2) parallel $\frac{1}{4}$ " jacks.



SPECIFICATIONS

MODEL

Type	20115S Bandpass Subwoofer
Power Handling RMS	300
Power Handling Peak	425
Power Handling Total	1200
Nominal Impedance	8 ohm
Frequency Response (+/- 10dB)	34Hz-130Hz
Sensitivity (1w, 1m)	97 dB
Woofer Size	15"
Maximum SPL	128 dB
Input Connectors	(2) Parallel 1/4" Phone Jacks (2) Parallel Neutrix 4 pole SPEAK-ON
Weight	63 lbs
Dimensions	28-3/4"H x 22-3/4"W x 17-5/8"D
Dimensions Metric	73cm x 57.8cm x 44.8cm

• Five Year Limited Warranty •



1601 Jack McKay Blvd.
Ennis, TX 75119
www.AtlasSound.com
Tech Support 1.800.876.3333

Printed in the USA
Specifications are subject to change without notice.

©AtlasSound. AtlasSound is a trademark of AtlasSound. All rights reserved.

484040

00301

AT000442