



**Chroma-Q®**  
BRILLIANT SOLUTIONS



**MADE IN  
NORTH  
AMERICA**



## Chroma-Q® Color One 100™

Above Par Performance From ONE Source

[www.chroma-q.com/color-one](http://www.chroma-q.com/color-one)





**Chroma-Q®**  
BRILLIANT SOLUTIONS



**WFX NEW PRODUCT AWARDS TECHNOLOGY 2012 WINNER**

*Best Overall Lighting Product  
Best LED Fixture*

# Chroma-Q® Premium Performance Lighting Solutions

Chroma-Q® have been designing lighting equipment since the mid 1990s, when they established a reputation for high product quality, innovation and reliability with hugely successful products.

## LED Lighting

In 2004 Chroma-Q launched their first LED fixture, the Color Block DB4™ - a product so popular that it's still selling today in a newer incarnation with upgraded technologies.

Since then, Chroma-Q have gained a reputation for introducing award-winning, premium LED lighting solutions which deliver the highest performance levels required by today's most demanding applications - including concerts & theatre shows, film & TV broadcasts, retail, leisure & museum installations, exhibitions & corporate hospitality events.

This delivers the best possible creative experience and the maximum return on investment.

The impressive LED lineup includes colour-mixing and white lighting ranges, house lighting, modular, portable and automated solutions.

## Other Products

Chroma-Q have an equally impressive track record developing a range of lighting accessory solutions, including colour changers, effects gobo rotators, and various control & data distribution products.

For more information on the full range, visit:

**[www.chroma-q.com](http://www.chroma-q.com)**



*V12 Phosphor - Winner Lighting*



# Contents



4. Color One 100™ Features

Color One 100 Version Options		
Design Type	Standard Use	Temporary event installation
Product Code	CHCONE100R6GA	CHCONE100R6AP
IP Rating	IP20	IP50
Power Connector (VGA)	powerCON	30° Tasting Leads with Bare Ends
Data Connector (VGA)	RJ45 5-pin	30° Tasting Leads with RJ45 5-pin
Net Weight	2.8kg / 6.2lb	4.3kg / 9.5lb
Shipping Weight	5.8kg / 12lb	6kg / 13.5lb

Color One 100 Shared Technical Specification		
Net Dimensions (Full Case Total)	274mm x 207mm x 220mm / 10.8" x 8.2" x 8.7"	Total LEDs
Shipping Dimensions	400mm x 220mm x 220mm / 15.7" x 8.7" x 8.7"	Control Mode
Power Supply	Built-in	4 channels DMX, 8 channels DMX, 4 channels DMX, 2 channels DMX
Power Input	100-240V AC 50-60Hz 120W	2 channels DMX, 2 channels DMX, DMX, DMX
		Dimming Curve

5. Technical Specification



6. Connaught Theatre, UK



6. Boston University, USA



7. ACK Productions, UK



7. The Ballroom, UK

## Worldwide Dealer Network

We have a worldwide network of Chroma-Q dealers. To find your local dealer, please visit

[www.chroma-q.com/sales](http://www.chroma-q.com/sales)



Follow the new Chroma-Q Facebook page for access to breaking news, user application stories, photos & videos, competitions and much more!



Scan the QR code to follow us



Like Chroma-Q on Facebook





**Chroma-Q®**  
BRILLIANT SOLUTIONS

# Why Buy Chroma-Q® Color One 100™ Fixtures?

Utilising core LED technology from the Chroma-Q® premium performance lighting range, the Color One 100™ multi-purpose creative lighting tool is designed to deliver above Par performance from ONE source, for today's most demanding lighting applications.

## High Quality Light Output

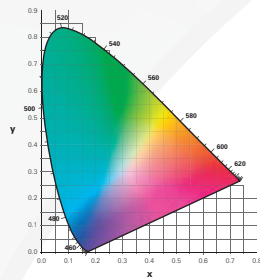
### Smooth, Homogenised Optics

The Color One's custom optical design and fully homogenised output provides a smooth, uniform and defined beam, with outstanding colour blend across the spectrum and no unsightly colour separation shadows.

This makes the Color One ideal for use as a front and backlight with clean shadows, and an uplighter with a smooth, even beam - all from ONE source.

### Power Across The Spectrum

The Color One's huge RGBA colour-mixing palette delivers outstanding colour blend across the spectrum - including deep-cold blues, red-hot lava looks and super-soft pastels - as well as a complete range of whites - all from ONE source.



### High CRI

With RGBA colour mixing providing a high CRI of 93, the fixture can achieve extremely accurate colour matching.



## Theatrical Grade Dimming

Theatrical grade dimming emulates the extremely smooth dimming curve of tungsten fixtures, from completely off to completely on, and with no visible stepping or jerkiness during the dimming.

## Multi-Purpose Workhorse Fixture

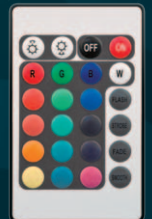
With the advanced feature set also including convection cooling for near-silent operation, a versatile mounting yoke for floor, truss or wall mounting, and a choice of IP20 / IP65\* versions, the Color One 100 is suitable for numerous entertainment lighting applications - complementing the popular Chroma-Q Color Force™ and Inspire™ LED fixtures ranges.

## Energy Efficient

The Color One fixture's energy-efficient LED design provides reduced maintenance and running costs.

## Convenient Remote-Controlled Operation

With a simple to use Infra-Red remote control included with each fixture, you can be up and running within minutes without the requirement of a lighting console - saving time and labour with instant access to preset colours, on/off, dimming and effects.



## Compatible With Industry-Standard Accessories

To enable maximum flexibility with users' existing production inventory, the Color One accepts industry-standard 6.25" accessories such as egg crates, barndoors and top hats. In addition, a range of compatible Chroma-Q accessories is also available.

## Color One 100™ Fixture



The Color One 100 fixture is available in an IP20-rated version with standard chassis-mount powerCON and XLR 5-pin in/out, and a choice of two IP65-rated\* versions - with trailing power leads & trailing data leads, or with trailing power leads & Stainless Steel XLR 5-pin in/out.

\*As per IEC60529 ingress protection rating code.



# Technical Specifications

## Color One 100 Version Options

Product Code	CHCONE100RGBA	CHCONE100RGBAISS	CHCONE100RGBAIIP
IP Rating	IP20	IP65	IP65
Power Connectors In/Out	powerCON	36" Trailing Leads with Bare Ends	36" Trailing Leads with Bare Ends
Data Connectors In/Out	XLR 5-pin	36" Trailing Leads with Stainless Steel XLR 5-pin	36" Trailing Leads with Bare Ends
Net Weight	3.8kg / 8.5lb	4.3kg / 9.5lb	4.3kg / 9.5lb
Shipping Weight	5.5kg / 12lb	6kg / 12.5lb	6kg / 12.5lb

## Color One 100 Shared Technical Specification

Net Dimensions (Full Open Yoke)	214mm x 267mm x 232mm / 8.5" x 10.5" x 9"
Shipping Dimensions	406mm x 228mm x 292mm / 16" x 9" x 11.5"
Power Supply	Built-in
Power Input Rating	100-240V AC 50-60Hz 125VA
Power Factor	0.5
Typical Power & Current	Measurements done with all LEDs at maximum intensity. Measurements made at nominal voltage. Allow for a deviation of +/- 10%.
Power Consumption	52W (Maximum); 5.5W (Standby)
Control Protocol	ANSI E1.11 USITT DMX 512-A
Cooling System	Convection
Operating Temperature	0°C to 40°C
Construction	Cast machined aluminium
Colour	Black (other custom colours available on request)
Built-In Hardware	Split Yoke, 6.25" Accessory Holder
Approvals	CISPR 15 / EN55015 & EN61547, FCC Part 15 Subpart B:2012 / ICES-003:2012, CSA C22.2, UL 1573, IEC 60598
LED Engines	1
LEDs Per Engine	6 x RGBA

Total LEDs	24
Control Modes	4 channels RGBA, 5 channels RGBAI, 4 channels HSI, 3 channels RGB, 3 channels MLED RGB, Master, Slave
Dimming Curve	Theatrical
Effects Parameters	Flash, strobe, fade, smooth (via Wireless IR Remote)
Hot Lumen Output (Combined)	1,230
Optics	Fully homogenised
Beam Angle	20° as standard Optional 36° and 50° holographic lenses accessory kit
Beam Distribution	Symmetrical direct illumination
CCT	Adjustable 1,000 – 10,000K
Colour Gamut	Performance enhanced
CRI	93
Lamp Life	L70 at 50,000 hours
Variable Effects Engine	Yes (via Wireless IR Remote)
Accessories Included	Wireless IR Remote, Colour Frame
Optional Accessories	Egg Crate, Barndoor, Top Hat, 36° and 50° holographic lenses kit



A.C. Entertainment Technologies will make a contribution to the **Behind the Scenes** charity for every unit sold.

[www.behindthescenescharity.org](http://www.behindthescenescharity.org)

# Color One 100 Lighting Applications

Worthing's Connaught Theatre has invested in Chroma-Q® Color One 100™ LED Pars, which made their debut beaming bright, primary colours for an all-star Christmas pantomime production of 'Aladdin'. The show featured singer Jon Lee of multi-million selling band 'S Club 7', alongside 'Britain's Got Talent' semi-finalists Kieran Sutcliffe and Sarah Jameson.

## Connaught Theatre, UK

The LED Pars were purchased for use in the venue's Studio Theatre, but made their debut in the main auditorium for the panto, to provide bright and comprehensive stage coverage.



"The main attraction of the Color One 100s for me was the excellent colour mixing and replication along with the decent lens," says Martin Wright, Senior Technician at The Connaught. "The bright primary colours are excellent, but it was the more subtle colours that truly impressed alongside almost no colour separation. For our production of Aladdin, the fixtures truly excelled, providing great stage coverage and complementing the rest of the rig really well."

Worthing Borough Council, which operates the Connaught under Worthing Theatres, were attracted by the Color One 100s as part of an effort to reduce the venue's energy consumption.

"I think the price to performance ratio is very good, and although there are cheaper LED fixtures available, for me the build quality just isn't anywhere near that of the Color One 100. And as a venue with very tight production time constraints, we can't afford to have units go down, so we chose the Chroma-Q units as we know they're reliable and simple to set up."

*Martin Wright, Senior Technician  
- Connaught Theatre*

Photos by Mike Edlowes, scenery by Scenic Projects

The Boston University College of Fine Arts School of Theatre have utilised Chroma-Q® Color One 100™ LED Pars to provide outstanding colour and punch for their production of 'The Human Comedy', staged at the city's new 360-seat new state-of-the-art proscenium Virginia Wimberly Theatre, USA.

## Boston University, USA

Boston University lighting designer Brandon Bagwell, who is being tutored on the University's Master of Fine Arts Lighting Design program by Associate Professor (Lighting Design), Mark Stanley - the resident lighting designer for New York City Ballet and former resident LD at New York City Opera, used the Color One 100 LED par to sidelight the set, which included hanging



gears, clocks and musical instruments.

From the moment he turned them on for the first time, Brandon was in awe of the fixtures. He was impressed by their lumen output, colour-mixing spectrum and dimming.

"Their lumen output was on par if not exceeding that of, the mostly tungsten rig. This was even true in the most saturated colour produced by the unit."

He continues: "The Color One 100's dimming curve was excellent, there is no stepping in lower intensities and no annoying 'pop' on or off. Even with times of thirty seconds or higher, they did an amazing job of dimming."

Brandon also used the Chroma-Q Color Force 72™ battens to down light a layered canvas wall upstage.

"The colour engine in the Color One 100 is outstanding - it presents a designer with such a broad spectrum of colour and value that the combinations are endless. The spectrum even included subtle and elegant pastels which were a beautiful contrast to the vibrant, saturated colours the Chroma-Q line is so well-known for."

*Brandon Bagwell, Lighting Designer  
- Boston University*

Photos © Boston University School of Theatre

For the Full Stories, visit [www.chroma-q.com/color-one](http://www.chroma-q.com/color-one)

Some of Northern Ireland's most prestigious opera and television projects have utilised the Chroma-Q® Color One 100™ LED Par after Belfast-based ACK Productions added the fixture to its rental inventory.

## ACK Productions, UK

ACK Productions opened for business in 1991 and is a specialist hire company, installer, systems integrator and reseller, offering a wide range of theatrical equipment and services tailored to suit the needs of schools, theatres, venues and live events.

Owner, Alastair Kerr comments: "Lighting designers have historically not been interested in our LED Pars, but this has now changed as



the technology has advanced."

"We've already hired out our Color One stock to West Side Story in the Grand Opera House, Belfast, and a gala dinner event at the Titanic Belfast building. In addition, they've been used on a Music From Northern Ireland TV show for BBC Northern Ireland and PBS (Public Broadcasting Service) in the USA."

The Chroma-Q Color One 100 features an innovative fully homogenised beam virtually eliminating the colour separation and shadows synonymous with LED lighting - delivering above Par performance from ONE source. The unit's optical design provides a smooth, uniform and defined beam. This makes it ideal for use as a front and backlight with clean shadows, and an uplighter with a smooth, even beam.



**"I was immediately impressed with not only the intensity of the Color One 100s, but also the dimming curve, which was much more suited to the operas and musicals I was lighting, and other applications at this more technically discerning end of the market. I would definitely invest in more..."**

*Alastair Kerr, Owner - ACK Productions*

Chroma-Q® Color One 100™ premium performance LED Pars are providing a rich palette of coloured stage washlighting to meet the diverse, multi-purpose needs of events hosted by The Ballroom, Hyndburn - including theatre-style live shows, dances, conferences, fashion shows and wedding receptions, amongst others.

## The Ballroom, UK

The classic ballroom, which dates back to 1853, is located within Accrington Town Hall and run by Hyndburn Leisure working in partnership with Hyndburn Borough Council. It recently underwent a £750k respectful restoration to enhance its striking original features, as well as bring its technical facilities right up to date for hosting modern events.

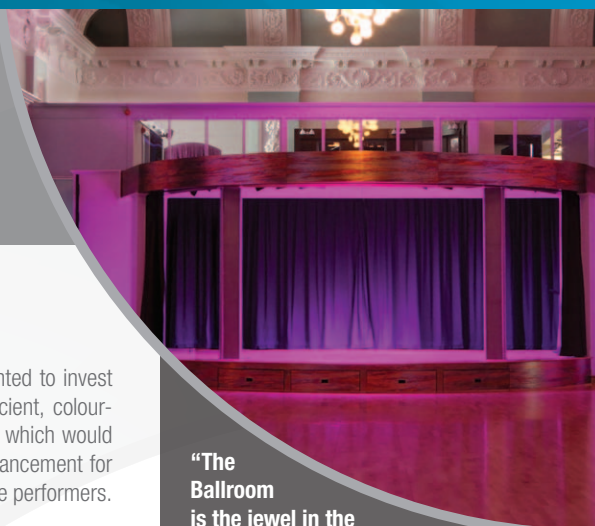
When it came to upgrading The Ballroom's



stage lighting rig, the venue wanted to invest in a state of the art, energy-efficient, colour-changing effects lighting system which would provide an impressive visual enhancement for singers, orchestras, and other live performers.

Chroma-Q Color One 100 LED Pars were specified to provide rock 'n' roll style washlighting over the stage, as well as effects lighting for the curved truss and legs running around the front of the performance area.

The fixture's innovative fully homogenised beam made it ideal for this project - providing a front light with clean shadows, and a downlighter with a smooth, even beam. In addition, the unit's extensive colour-mixing palette is ideal for the room's diverse clients.



**"The Ballroom is the jewel in the area's crown, so given the level of investment made to restore the room to its former glory, we wanted to invest in a high performance stage lighting system which would provide a visually impressive complement to the room's interior. The (Chroma-Q Color One) stage lighting is fantastic and delivers on everything we wanted."**

*Kerry Smith, Cultural Services Manager - Hyndburn Leisure*

MADE IN  
NORTH  
AMERICA

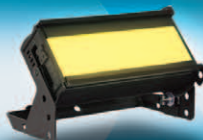
# Chroma-Q®

## Premium Performance for Today's Most Demanding Lighting Applications

- Outstanding colour blend • Precise theatrical grade dimming • Ultimate reliability • Award-winning products



Color Force™



Studio Force™



Color One 100™



Inspire™



Contact your local Chroma-Q  
dealer for a demonstration or visit:

[www.chroma-q.com](http://www.chroma-q.com)

Available Worldwide!



Chroma-Q®  
BRILLIANT SOLUTIONS