

# FLEX-LT

## Room Control at your fingertips



# FSR

## Control Products Group

FLEX-LT



### DESCRIPTION

The Flex-LT is a self-contained control system that has a vast number of features and a price point that everyone can afford.

The Flex-LT mounts in a wall or sits on a desk and presents the user with an easy-to-use and understand color touch screen. Through the touch screen the user can choose what source is being displayed, change the volume, control the various sources, turn lights on and off, raise or lower the shades or screen and much more.

Using the built in scheduler, the Flex-LT can automatically shut off displays that have been accidentally left on when the room is not in use. It can also alert the support staff if there is an issue in the room such as the lamp life getting too high in order to reduce the down time of the room.

The Flex-LT configuration utility features an easy to use method to get the most out of the system. The contractor is presented with an easy to follow drag 'n drop programming methodology; no need to learn another programming language. Flex-LT eases device control by offering IR libraries or if a library is not available, the Flex-IR learner is a snap to use. Serial libraries are also available or can be entered in either ASCII or Hex.

The Flex-LT makes life easy — Easy-to-Use, Easy-to-Program, Easy-to-Afford.

### FEATURES

- 3.5" Diagonal Color LCD Touch Screen
- 2 Serial Ports, 4 on FLEX-LT200
- 2 IR Ports, 4 on FLEX-LT200 (Each Can Control up to 4 Devices)
- IP Port (FLEX-LT200 model)
- Built In Clock / Calendar with Scheduler
- Multi Command Scripting Conditionality
- "Power over Ethernet capability" (on FLEX-LT150 and LT-200 models)

### TARGET MARKETS

- K-12 Classrooms
- University Lecture Halls
- Boardrooms
- Meeting Rooms
- Conference Rooms

### ORDERING INFORMATION

Item #	Part #	Description
17094	FLEX-LT100	3.5" Color Touch Cont Sys w/ 2 Ser, 2 IR
17236	FLEX-LT150	3.5" Color Touch Cont Sys w/ IP Port Only
17096	FLEX-LT200	3.5" Clr Touch Cont Sys w/ IP, 4 Ser, 4 IR, 4 I/O, 1 Analog In
17237	FLEX-LT300	Control System "Brain" w/ IP, 4 Ser, 4 IR, 4 I/O and 1 An In - Module
17095	FLEX-PRGM	Programming Kit for FLEX w/ IR Learner
17181	IR-EC3-6	IR Emitter w/ 6' Cable
17332	T6-FLEX-BLK	6" Table Box Round with FLEX LT-200 available in multiple finishes & configurations. (see LIT1434)
17296	K-10D	Relay Module 5-pack

\* Check back box clearance to ensure proper fit. Units require mounting in a plastic back box or oversized metal back box.

### Number and Type of Ports on Each Flex Model

Model	Serial Port	IR Port	I/O Port	Analog Input	Ethernet Port
FLEX-LT100	2	2			
FLEX-LT150					1
FLEX-LT200	4	4	4	1	1
FLEX-LT300	4	4	4	1	1
T6-FLEX	4	4	4	1	1

### FSR Inc.

244 Bergen Boulevard, Woodland Park, NJ 07424

Phone: 973.785.4347 · Fax: 973.785.4207

Web: [www.fsrinc.com](http://www.fsrinc.com) · E-mail: [sales@fsrinc.com](mailto:sales@fsrinc.com)

LIT1273C

## SPECIFICATIONS

### Serial Ports (RS-232)

Speed: 2400-115,200 bps (Ports 1,2,3)  
2400-57,600 bps (Port 4)  
Pins: TX, RX and GND  
Connector type: Screw terminal

### IR Ports

Connector type: Screw terminal

### I/O Ports (FLEX-LT200, -LT300 and T6)

Output: open collector, current limited to 100mA,  
(24VDC max)  
Input:  $V_{IH\_MIN} = 5VDC$ ,  $V_{IH\_MAX} = 24VDC$ ,  
 $V_{IL\_MAX} = 0.4VDC$   
Connector type: Screw terminal

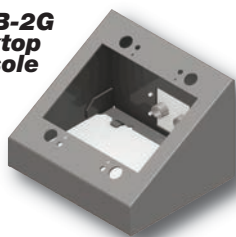
### Ethernet Port (FLEX-LT150, -LT200, -LT300, T6)

Type: 10/100BASE T/X  
Compliance and supported features:  
Compliant with IEEE 802.3/802.3u (100BASE-TX)  
Compliant with ISO 802-3 / IEEE 802.3 (10BASE-T)  
Supports Auto-negotiation  
Supports Automatic polarity detection and correction  
Supports HP Auto MDI/MDI-X  
(no crossover cables required)  
Protocols TCP/IP, UDP  
Connector type: RJ-45

### Power

Local adapter  
Voltage: 12VDC  
Current: 500mA  
Power supply included  
Connector type: Screw terminal

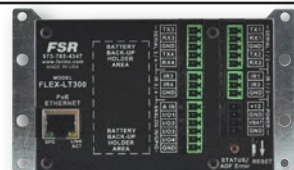
### DSKB-2G Desktop Console



### Power over Ethernet (PoE), (FLEX-LT150, -LT200, -LT300, T6)

Compliant with IEEE 802.3af (Class I device)  
Support local power adapter OR-ing for redundancy  
(local adapter preference)  
Unit can be powered from an 802.3af compliant PoE  
switch (not provided)  
Unit can be powered from an 802.3af compliant PoE PSE  
adapter (i.e. midspan injector. Not included  
(optional accessory)

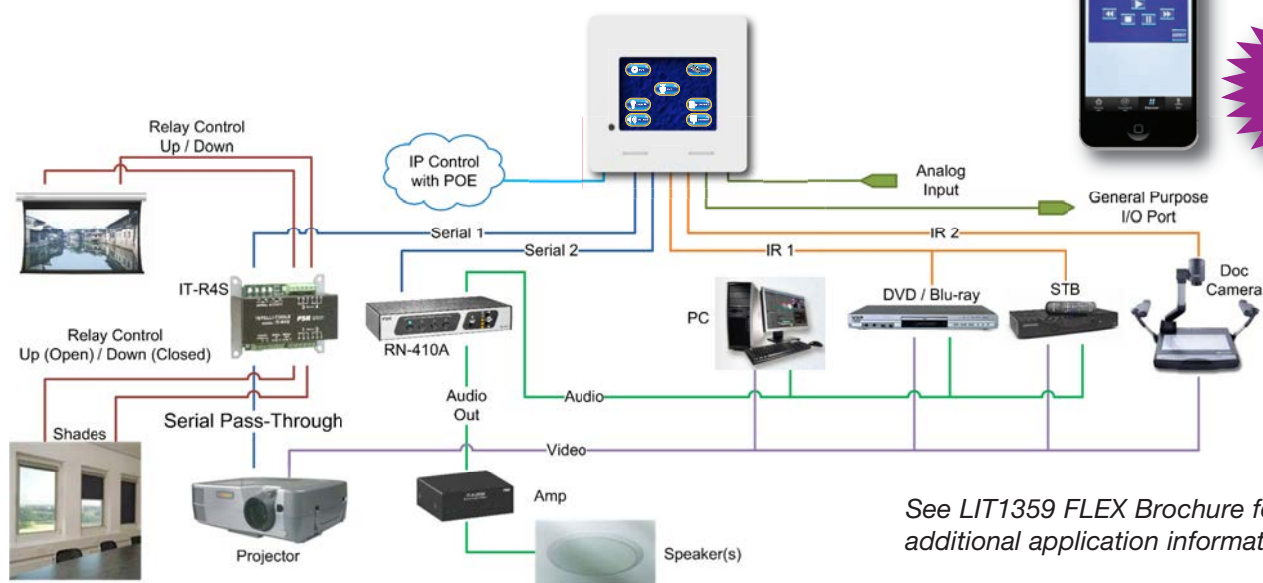
**FLEX-LT300** – The LT300 is another specialty member of the Flex Family. The LT300 is basically an LT-200 in a box without a touchscreen. The LT300 can be mounted in a rack or Ceiling Box and connected to all of the devices that need to be controlled. The user interface to the LT300 is provided either by a FLEX-LT200, LT150 or the Flex Remote Windows application.



A “must have” companion module for the **FLEX-LT**, the **K-10D** relays can be driven from the FLEX-LT low level GPIO output. These handy boards offer a quick, simple method to provide ground closures to devices that require relay control voltage such as screen controls or projector lifts. The K-10D “5-pack” includes the “breakaway” relay modules and hook-and-loop mounting strips.



## SYSTEM DRAWING



Check out our  
Flex App  
available at  
the App Store

See LIT1359 FLEX Brochure for  
additional application information.

## FSR Inc.

244 Bergen Boulevard, Woodland Park, NJ 07424  
Phone: 973.785.4347 · Fax: 973.785.4207  
Web: [www.fsrinc.com](http://www.fsrinc.com) · E-mail: [sales@fsrinc.com](mailto:sales@fsrinc.com)

LIT1273C



Specifications are subject to  
change without notice.