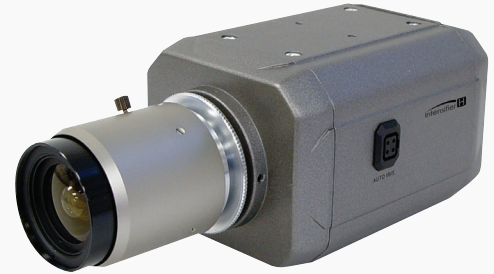


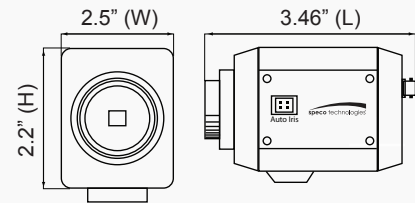
## Intensifier H® Series Traditional Cameras

See Color In Almost Complete Darkness Without IR LEDs

**HTINTT5H** Accepts C & CS auto iris & manual type lenses, dark grey housing



lens not included



### Features

- 1/3" Sony Super HAD™ CCD
- 700 lines of color resolution
- Amplify existing light with no distance limitations
- No problems caused by objects that reflect or absorb IR light sources
- Minimum illumination 0.00002 lux (Intensify @ 512x)
- With presets: Outdoor, Indoor, Elevator, Lobby, Hallway & Dark
- 12VDC / 24VAC dual voltage operation
- Built-in OSD operation
- Relay outputs for motion detection
- 5 year warranty

### Specifications

Image Sensor	1/3" Sony Super HAD™ CCD
Resolution	700 TV lines
Minimum Illumination	CDS Off: 0.15 lux CDS On: 0.00002 lux
Effective Pixels	976 (H) x 494 (V)
Total Pixels	1020 (H) x 508 (V)
TV System	NTSC
Scanning Frequency	15.734kHz (H) / 59.94Hz (V)
Scanning System	2:1 interlace
Synchronization	Internal
S/N Ratio	50dB
Video Output	CVBS: 1.0Vp-p / 75 ohms
Electronic Shutter Speed	1/60 sec. – 1/120,000 sec.
OSD	Available
DWDR	On / Off (level adjustable)
Backlight Compensation	BLC / HLC / Off
Day/Night	Color / BW / Auto / Ext
AGC	Level adjustable

White Balance	ATW / Push / Manual
Intensify	Auto / Off (selectable x2 - x512)
Motion Detection	On / Off (4 programmable zones)
Privacy Masking	On / Off (8 programmable zones)
Speco DNR	High / Med / Low / Off
Sharpness	On / Off (level adjustable)
Mirror	On / Off
Power Consumption	12VDC, 150mA / 24VAC, 2W
Power Supply	12VDC / 24VAC dual voltage operation (power supply not included)
Operating Temperature	14° F – 122° F
Storage Temperature	-4° F – 140° F
Dimensions	2.5" (W) x 2.2" (H) x 3.46" (L)
Weight	1.5 lbs.

### Optional Accessories



**PSW4**  
24VAC  
Power Supply



**PSW5**  
12VDC  
Power Supply



**VCH400MT**  
Housing &  
Bracket Only



**VCH400HBMT**  
Housing with Heater,  
Blower & Bracket

### Optional Lenses

VF2.812.....2.8-12mm manual lens	VF3.58DC.....3.5-8mm auto iris lens
VF2.812DC...2.8-12mm auto iris lens	VF5100DC....5-100mm auto iris lens
VF3.58.....3.5-8mm manual lens	VF660DC.....6-60mm auto iris lens

Speco Technologies is constantly developing and improving products. We reserve the right to modify product design and specifications without notice and without incurring any obligation. Spec Rev. 11/4/14