

STReak

TM



 **blizzard**
LIGHTING

Blizzard Lighting, LLC
www.blizzardlighting.com
Waukesha, WI USA
Copyright (c) 2015

TABLE OF CONTENTS

G-Streak™ LED Mini Moving Head Beam	1
1. Getting Started	3
What's In The Box?	3
Getting It Out Of The Box	3
Powering Up!	3
Getting A Hold Of Us	3
Safety Instructions (Don't Stick Your Hand In The Toaster!)	4
2. Meet The G-Streak™ Mini Moving Head Beam	5
Features	5
DMX Quick Reference	5
The G-Streak™ Pin-up Picture	6
3. Setup	7
Fuse Replacement	7
Connecting A Bunch Of G-Streak's	7
Data/DMX Cables	7
Cable Connectors	8
3-Pin??? 5-Pin??? Huh?	8
Take It To The Next Level: Setting up DMX Control	8
Fixture Linking (Master/Slave Mode)	9
Mounting/Rigging	9
Mounting Points	10
Clamp Mounting	11
Securing the fixture	11
4. Operating Adjustments	12
The Control Panel	12
Control Panel Menu Structure	13
Channel Mode Selection	13
DMX Address	13
System Reset	13
Calibration Adjustments	13
DMX, Auto & Sound Active Modes	13
Change the Pan and Tilt options	13
DMX Channel Values In-Depth	14
Gobo Wheel and Color Chart	15
Troubleshooting	16
5. Appendix	17
A Quick DMX Lesson	17
Keeping Your G-Streak™ Spot As Good As New	18
Returns (Gasp!)	18
Shipping Issues	18
Tech Specs	19

1. GETTING STARTED

What's In The Box?

- 1 x G-Streak™ Mini Moving Head Beam
- An Ever-So-Handy Power Cord
- One Really Classy DMX Cable
- A Sweet Safety Cable & Mounting Bracket
- This Lovely User Manual

Getting It Out Of The Box

Congratulations on your purchase of the amazing G-Streak™ LED mini moving head beam. With a name like G-Streak™, you know it's going to be cool! Now that you've got your G-Streak™ (or hopefully, G-Streak's!), you should carefully unpack the box and check the contents to ensure that all parts are present and in good condition. If anything looks as if it has been damaged in transit, notify the shipper immediately and keep the packing material for inspection. Again, please save the carton and all packing materials. If a fixture must be returned to the factory, it is important that the fixture be returned in the original factory box and packing.

Powering Up!

All fixtures must be powered directly off a switched circuit and **cannot be run off a rheostat (variable resistor) or dimmer circuit, even if the rheostat or dimmer channel is used solely for a 0% to 100% switch.**

AC Voltage Switch - Not all fixtures have a voltage select switch, so please verify that the fixture you receive is suitable for your local power supply. See the label on the fixture or refer to the fixture's specifications chart for more information. A fixture's listed current rating is its average current draw under normal conditions. Check the fixture or device carefully to make sure that if a voltage selection switch exists that it is set to the correct line voltage you will use.

Warning! Verify that the voltage select switch on your unit matches the line voltage applied. Damage to your fixture may result if the line voltage applied does not match the voltage indicated on the voltage selector switch. All fixtures must be connected to circuits with a suitable Ground (Earthing).

Getting A Hold Of Us

If something is wrong, please just visit our website at www.blizzardlighting.com and open a support ticket. We'll be happy to help, honest.

Blizzard Lighting
N16 W23390 Stoneridge Dr. Ste E
Waukesha, WI 53188 USA
www.blizzardlighting.com
414-395-8365

Disclaimer: The information and specifications contained in this document are subject to change without notice. Blizzard Lighting™ assumes no responsibility or liability for any errors or omissions that may appear in this user manual. Blizzard Lighting™ reserves the right to update the existing document or to create a new document to correct any errors or omissions at any time. You can download the latest version of this document from www.blizzardlighting.com.

Author:	Date:	Last Edited:	Date:
J. Henry	3/3/2015	J. Henry	3/4/2015

SAFETY INSTRUCTIONS



Please read these instructions carefully. They include important information about the installation, usage and maintenance of this product.

- Please keep this User Guide for future use. If you sell the unit to someone else, be sure that they also receive this User Guide.
- ALWAYS make sure that you are connecting to the proper voltage, and that the line voltage you are connecting to is not higher than that stated on the decal or rear panel of the fixture.
- This product is intended for indoor use only.
- To prevent risk of fire or shock, do not expose fixture to rain or moisture.
- Make sure there are no flammable materials close to the unit while operating.
- The unit must be installed in a location with adequate ventilation, at least 20in (50cm) from adjacent surfaces. Be sure that no ventilation slots are blocked.
- ALWAYS disconnect from the power source before servicing or replacing fuse and be sure to replace with same fuse size and type.
- ALWAYS secure fixture using a safety chain. NEVER carry the fixture by its head. Use its carrying handles.
- DO NOT operate at ambient temperatures higher than 104°F (40°C).
- In the event of a serious operating problem, stop using the unit immediately. NEVER try to repair the unit by yourself. Repairs carried out by unskilled people can lead to damage or malfunction. Please contact the nearest authorized technical assistance center. Always use the same type spare parts.
- NEVER connect the device to a dimmer pack.
- Make sure the power cord is never crimped or damaged.
- Never disconnect the power cord by pulling or tugging on the cord.
- Avoid direct eye exposure to the light source while it is on.

Caution! There are no user serviceable parts inside the unit. Do not open the housing or attempt any repairs yourself. In the unlikely event your unit may require service, please open a support ticket at www.blizzardlighting.com/tickets.

2. MEET THE G-STREAK™ MINI MOVING HEAD BEAM

MAIN FEATURES

- 50w white COB LED Mini Moving Head Beam
- 8/16 bit smooth and precise P&T resolution
- Pan: 630° Tilt: 270°
- Scan position memory with auto reposition
- User selectable 9/11-channel DMX modes
- 14 colors + open single color wheel
- 1 static gobo wheel with 17 gobos + Open including 2° beam gobo
- 8-facet prism with variable speed and direction
- 0-100% linear LED dimmer
- DMX recorder and edit function integrated
- 3-pin male/female input and outputs
- PowerCon™ compatible AC power In/Out connectors

CONTROL:

- USITT DMX-512 (9/11 Channels)
- 3-pin Input/Output
- 4-button menu with LED display

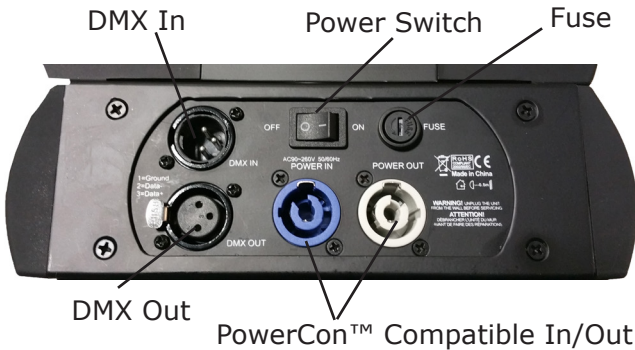
DMX Quick Reference (9/11-Channel Modes)

Channel	Reduced Mode	Channel	Standard Mode
1	Pan	1	Pan
2	Tilt	2	Fine Pan
3	Color Wheel	3	Tilt
4	Gobo Wheel	4	Fine Tilt
5	Shutter	5	Color Wheel
6	Dimmer	6	Gobo Wheel
7	Prism	7	Shutter
8	P/T Speed	8	Dimmer
9	Control Functions	9	Prism
--	--	10	P/T Speed
--	--	11	Control Functions

Figure 1: The G-Streak™ Pin-Up Picture



Figure 2: The Rear Connections



3. SETUP



Before replacing a fuse, disconnect power cord. ALWAYS replace with the same type and rating of fuse.

Fuse Replacement

With a phillips head screwdriver, unscrew the fuse holder out of its housing. Remove the damaged fuse from its holder and replace with exact same type fuse. Insert the fuse holder back in its place and reconnect power.

Connecting A Bunch of G-Streak™ Fixtures

You will need a serial data link to run light shows using a DMX-512 controller or to run shows on two or more fixtures set to sync in master/slave operating mode. The combined number of channels required by all the fixtures on a serial data link determines the number of fixtures the data link can support.

Fixtures on a serial data link must be daisy chained in one single line. Also, connecting more than 32 fixtures on one serial data link without the use of a DMX optically-isolated splitter may result in deterioration of the digital DMX signal. The maximum recommended cable-run distance is 500 meters (1640 ft). The maximum recommended number of fixtures on a serial data link is 32 fixtures.

Data/DMX Cabling

To link fixtures together you'll need data cables. You should use data-grade cables that can carry a high quality signal and are less prone to electromagnetic interference.

For instance, Belden© 9841 meets the specifications for EIA RS-485 applications. Standard microphone cables will "probably" be OK, but note that they cannot transmit DMX data as reliably over long distances. In any event, the cable should have the following characteristics:

*2-conductor twisted pair plus a shield
Maximum capacitance between conductors – 30 pF/ft.
Maximum capacitance between conductor & shield – 55 pF/ft.
Maximum resistance of 20 ohms / 1000 ft.
Nominal impedance 100 – 140 ohms*

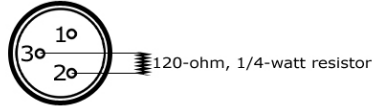
Cable Connectors

Cables must have a male XLR connector on one end and a female XLR connector on the other end. (Duh!)



A Word on Termination: DMX is a resilient communication protocol, however errors still occasionally occur. Termination reduces signal errors, and therefore best practices include use of a terminator in all circumstances. If you are experiencing problems with erratic fixture behavior, especially over long signal cable runs, a terminator may help improve performance.

To build your own DMX Terminator:
Obtain a 120-ohm, 1/4-watt resistor, and wire it between pins 2 & 3 of the last fixture. They are also readily available from specialty retailers.



CAUTION: Do not allow contact between the common and the fixture's chassis ground. Grounding the common can cause a ground loop, and your fixture may perform erratically. Test cables with an ohm meter to verify correct polarity and to make sure the pins are not grounded or shorted to the shield or each other.

3-Pin??? 5-Pin??? Huh?!?

If you use a controller with a 5 pin DMX output connector, you will need to use a 5 pin to 3 pin adapter. They are widely available over the internet and from specialty retailers. If you'd like to build your own, the chart below details a proper cable conversion:

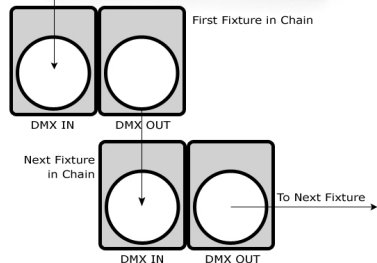
Conductor	3-Pin Female (Output)	5-Pin Male (Input)
Ground/Shield	Pin 1	Pin 1
DMX Data (-)	Pin 2	Pin 2
DMX Data (+)	Pin 3	Pin 3
Not Used.	No Connection.	No Connection.
Not Used.	No Connection.	No Connection.

Take It To The Next Level: Setting Up DMX Control

Step 1: Connect the male connector of the DMX cable to the female connector (output) on the controller.



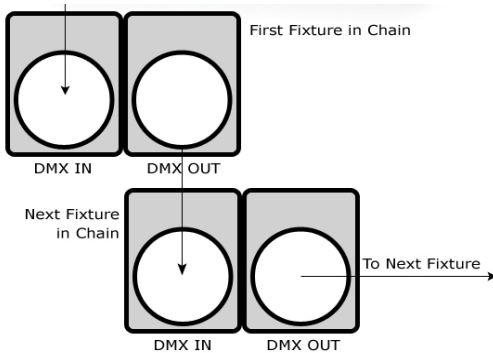
Step 2: Connect the female connector of the DMX cable to the first fixture's male connector (input). *Note:* It doesn't matter which fixture address is the first one connected. We recommend connecting the fixtures in terms of their proximity to the controller, rather than connecting the lowest fixture number first, and so on.



Step 3: Connect other fixtures in the chain from output to input as above. Place a DMX terminator on the output of the final fixture to ensure best communication.

Fixture Linking (Master/Slave Mode)

1. Connect the (male) 3 pin connector side of the DMX cable to the output (female) 3 pin connector of the first fixture.
2. Connect the end of the cable coming from the first fixture which will have a (female) 3 pin connector to the input connector of the next fixture consisting of a (male) 3 pin connector. Then, proceed to connect from the output as stated above to the input of the following fixture and so on.



A quick note: Often, the setup for Master-Slave and Standalone operation requires that the first fixture in the chain be initialized for this purpose via either settings in the control panel or DIP-switches. Secondly, the fixtures that follow may also require a slave setting.

Check the **"Operating Adjustments"** section in this manual for complete instructions for this type of setup and configuration.

Mounting & Rigging

This fixture may be mounted in any SAFE position provided there is enough room for ventilation.

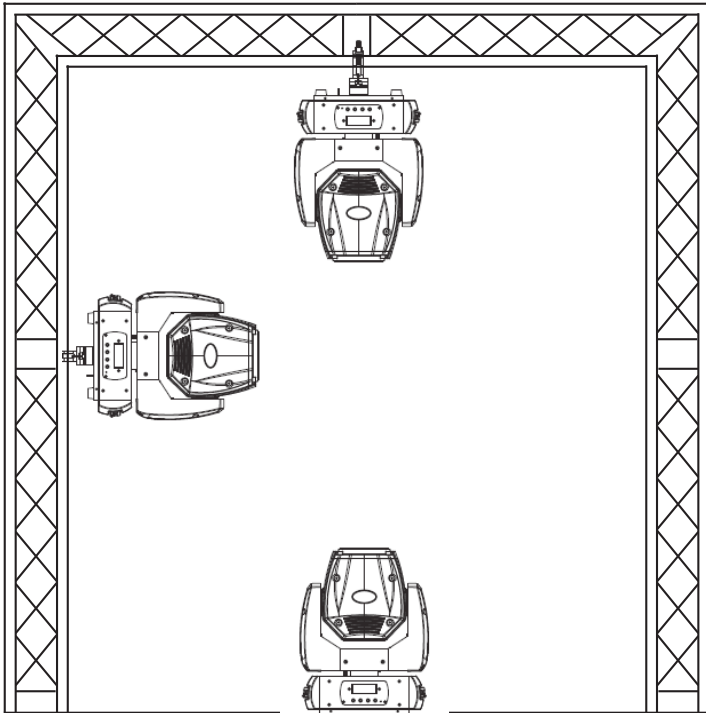
It is important never to obstruct the fan or vents pathway. Mount the fixture using a suitable "C" or "O" type clamp. The clamp should be rated to hold at least 10x the fixture's weight to ensure structural stability. Do not mount to surfaces with unknown strength, and ensure properly "rated" rigging is used when mounting fixtures overhead.

Adjust the angle of the fixture by loosening both knobs and tilting the fixture. After finding the desired position, retighten both knobs.

- When selecting installation location, take into consideration lamp replacement access (if applicable) and routine maintenance.
- Safety cables **MUST ALWAYS** be used.
- Never mount in places where the fixture will be exposed to rain, high humidity, extreme temperature changes or restricted ventilation.

Mounting Points

Overhead mounting requires extensive experience, which includes calculating working load limits, knowledge of the installation material being used, and periodic safety inspection of all installation material and the fixture. If you lack these qualifications, do not attempt the installation yourself. Improper installation can result in bodily injury.

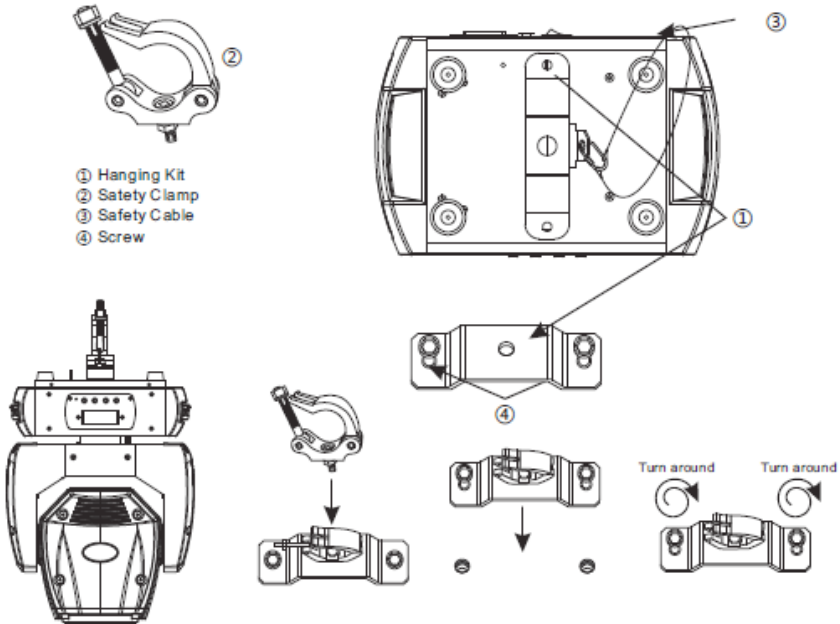


Caution!

Please be aware, you should have a qualified electrician performing all of your electrical connection needs. Better safe than sorry! Be sure to complete all rigging and installation procedures before connecting the main power cord to the appropriate wall outlet.

Clamp Mounting

This fixture provides a mounting bracket assembly that screws into the bottom of the base. When mounting this fixture to truss, be sure to secure an appropriately rated clamp to the mounting bracket using an M10 screw fitted through the center hole of the bracket.



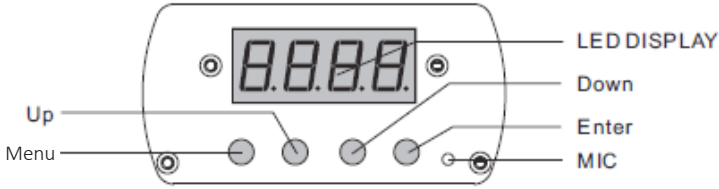
Securing the Fixture

Regardless of the rigging option you choose for your fixtures always be sure to secure your fixture with a safety cable. Be sure to only use the designated rigging point found on the underside of the base assembly for the safety cable. Never secure a safety cable to a carrying handle.

4. OPERATING ADJUSTMENTS

The Control Panel

All the goodies and different modes possible with the G-Streak™ are accessed by using the control panel on the front of the fixture. There are 4 control buttons below the LCD display which allow you to navigate through the various control panel menus.



Button	Function
<MENU>	Used to access the menu or to return to a previous menu option.
<UP>	Scrolls through menu options in ascending order.
<DOWN>	Scrolls through menu options in descending order.
<ENTER>	Used to select and store the current menu or option within a menu.

Access control panel functions using the four panel buttons located directly underneath the LCD Display.

The Control Panel LCD Display shows the menu items you select from the menu map on page #11. When a menu function is selected, the display will show immediately the first available option for the selected menu function. To select a menu item, press **<ENTER>**.

Use the **<UP>** and **<DOWN>** buttons to navigate the menu map and menu options. Press the **<ENTER>** button to access the menu function currently displayed or to enable a menu option. To return to the previous option or menu without changing the value, press the **<MENU>** button.

Control Panel Menu Structure

Menu	Function	Sub Function	Selection	What It Does...
<i>MODE</i>	ADDR	VALU	A001 <-> A512	Sets the DMX address
		SLAV	ON/OFF	Slave Mode
	AUTO	IP 1-8	ALON (AU-A)	Alone Setting
			MAST (AU-M)	Master Setting
	SOUN	IP 1-8	ALON (SO-A)	Alone Setting
MAST (SO-M)			Master Setting	
<i>SEL</i>	MIC	M-XX	00-99	Mic Sensitivity
	LODA	ON/OFF	--	Data Reload
	VER	--	U- 11 (current)	Software Version
	CALI	CODE	0-255 (088 preset)	Security Code
		CH 1	0-255	Pan Calibration
		CH 3	0-255	Tilt Calibration
		CH 5	0-255	Color Calibration
	CH 6	0-255	Gobo Wheel Calibration	
<i>DMX</i>	MOD1	--	--	16-bit Mode
	MOD2	--	--	8-bit Mode
<i>RESL</i>	ON/OFF	--	--	Reset Fixture
<i>SIGL</i>	S1	--	--	N/A
	S2	--	--	N/A
	S3	--	--	N/A
<i>TEMP</i>	T(XXX)	--	--	Temperature Reading
<i>DEGR</i>	PAN	630/540/360	--	Pan angle options
	TILT	270/180/90	--	Tilt angle options

DMX Channel Values In-Depth

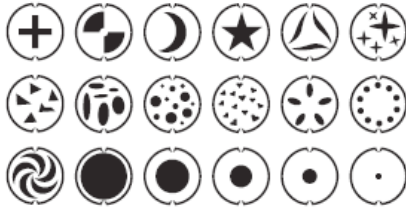
Reduced Mode	Standard Mode	Channel Value	What it does
1	1	000 <-> 255	Pan
...	2	000 <-> 255	Pan Fine (16-Bit Pan)
2	3	000 <-> 255	Tilt
...	4	000 <-> 255	Tilt Fine (16-Bit Tilt)
3	5		Color Wheel
		000 <-> 007	Open / White
		008 <-> 015	Red
		016 <-> 023	Blue
		024 <-> 031	Green
		032 <-> 039	Yellow
		040 <-> 047	Rose Carmine
		048 <-> 055	Pearl (CTB)
		056 <-> 063	Dark Blue
		064 <-> 071	Orange
		072 <-> 079	Light Green
		080 <-> 087	Pink
		088 <-> 095	Dark Yellow
		096 <-> 103	Cyan
104 <-> 111	Light Yellow		
112 <-> 127	UV		
128 <-> 189	Rainbow Effect CW (slow <-> fast)		
190 <-> 193	Rotation Stop		
194 <-> 255	Rainbow Effect CCW (slow <-> fast)		
4	6		Gobo Wheel
		000 <-> 004	No Gobo
		005 <-> 009	Gobo 1
		010 <-> 014	Gobo 2
		015 <-> 019	Gobo 3
		020 <-> 024	Gobo 4
		025 <-> 029	Gobo 5
		030 <-> 034	Gobo 6
		035 <-> 039	Gobo 7
		040 <-> 044	Gobo 8
		045 <-> 049	Gobo 9
		050 <-> 054	Gobo 10
		055 <-> 059	Gobo 11
		060 <-> 064	Gobo 12
		065 <-> 069	Gobo 13
		070 <-> 074	Gobo 14
		075 <-> 079	Gobo 15
		080 <-> 084	Gobo 16
		085 <-> 089	Gobo 17
		090 <-> 097	Gobo 1 Shake
		098 <-> 105	Gobo 2 Shake
		106 <-> 113	Gobo 3 Shake
		114 <-> 121	Gobo 4 Shake
		122 <-> 129	Gobo 5 Shake
		130 <-> 137	Gobo 6 Shake
		138 <-> 145	Gobo 7 Shake
		146 <-> 153	Gobo 8 Shake
		154 <-> 161	Gobo 9 Shake
162 <-> 169	Gobo 10 Shake		
170 <-> 177	Gobo 11 Shake		
178 <-> 185	Gobo 12 Shake		
186 <-> 193	Gobo 13 Shake		
194 <-> 201	Gobo 14 Shake		
202 <-> 209	Gobo 15 Shake		
210 <-> 217	Gobo 16 Shake		
218 <-> 225	Gobo 17 Shake		
226 <-> 255	Flow Effect (slow <-> fast)		

DMX Channel Values In-Depth (Continued)

Reduced Mode	Standard Mode	Channel Value	What it does
5	7	000 <-> 031	Shutter Shutter Closed Shutter Open Strobe Effect (slow <-> fast) Shutter Open Pulse Effect (slow <-> fast) Shutter Open Random Strobe (slow <-> fast) Shutter Open
		032 <-> 063	
		064 <-> 095	
		096 <-> 127	
		128 <-> 159	
		160 <-> 191	
		192 <-> 223	
224 <-> 255			
6	8	000 <-> 255	Dimmer (0% <-> 100%)
7	9	000 <-> 005	Prism Prism Off Prism On Prism Rotate (slow <-> fast)
		006 <-> 127	
		128 <-> 255	
8	10	000 <-> 225	Pan/Tilt Speed Speed (fast <-> slow) Blackout by Movement Blackout by All Wheel Change No Function
		226 <-> 235	
		236 <-> 245	
		246 <-> 255	
9	11	000 <-> 079	Control Functions No Function All Motor Reset Scan Motor Reset Colors Motor Reset Gobo Motor Reset Shutter & Dimmer Motor Reset Other Motor Reset Auto Program 1 Auto Program 2 Auto Program 3 Auto Program 4 Auto Program 5 Auto Program 6 Auto Program 7 Sound Active Mode
		080 <-> 084	
		085 <-> 087	
		088 <-> 090	
		091 <-> 093	
		094 <-> 096	
		097 <-> 099	
		100 <-> 119	
		120 <-> 139	
		140 <-> 159	
		160 <-> 179	
		180 <-> 199	
		200 <-> 219	
		220 <-> 239	
		240 <-> 255	

Static Gobos and Color Wheel

Static gobos



Colors



Troubleshooting

Symptom	Solution
Fixture Auto-Shut Off	Check the fan in the fixture. If it is stopped or moving slower than normal, the unit may have shut itself off due to high heat. This is to protect the fixture from overheating. Clear the fan of obstructions, or return the unit for service.
Beam is Dim	Check optical system and clean excess dust/grime. Also ensure that the 220V/110V switch is in the correct position, if applicable.
No Light Output	Check to ensure fixture is operating under correct mode, IE sound active/auto/DMX/Etc., if applicable. Contact service for more information.
Chase Speed Too Fast/Slow	Check to ensure proper setup of speed adjustment.
No Power	Check fuse, AC cord and circuit for malfunction.
Blown Fuse	Check AC cord and circuit for damage, verify that moving parts are not restricted and that unit's ventilation is not obstructed
Slow Movement	Verify that 220V/110V switch is in the correct position, if applicable. Also check that speed channels are set appropriately.
No Response to Audio	Verify that the fixture is in "Sound Active" mode. Adjust Audio Sensitivity, If Applicable.
Fixture Not Responding / Responding Erratically	Make sure all connectors are seated properly and securely. Use Only DMX Cables. Install a Terminator. Check all cables for defects. Reset fixture(s).
Intermittent Lamp	Check lamp for properly installation. Relamp, lamp may have reached end of life.
Fixture Moving On Its Own	Verify proper mode of operation. Is the fixture in "Auto" mode?

If your problem isn't listed, or if problems persist, please open a support ticket at www.blizzardlighting.com/tickets.

5. APPENDIX

A Quick Lesson On DMX

DMX (aka DMX-512) was created in 1986 by the United States Institute for Theatre Technology (USITT) as a standardized method for connecting lighting consoles to lighting dimmer modules. It was revised in 1990 and again in 2000 to allow more flexibility. The Entertainment Services and Technology Association (ESTA) has since assumed control over the DMX512 standard. It has also been approved and recognized for ANSI standard classification.

DMX covers (and is an abbreviation for) Digital MultipleXed signals. It is the most common communications standard used by lighting and related stage equipment.

DMX provides up to 512 control "channels" per data link. Each of these channels was originally intended to control lamp dimmer levels. You can think of it as 512 faders on a lighting console, connected to 512 light bulbs. Each slider's position is sent over the data link as an 8-bit number having a value between 0 and 255. The value 0 corresponds to the light bulb being completely off while 255 corresponds to the light bulb being fully on.

DMX data is transmitted at 250,000 bits per second using the RS-485 transmission standard over two wires. As with microphone cables, a grounded cable shield is used to prevent interference with other signals.

There are five pins on a DMX connector: a wire for ground (cable shield), two wires for "Primary" communication which goes from a DMX source to a DMX receiver, and two wires for a "Secondary" communication which goes from a DMX receiver back to a DMX source. Generally, the "Secondary" channel is not used so data flows only from sources to receivers. Hence, most of us are most familiar with DMX-512 as being employer over typical 3-pin "mic cables," although this does not conform to the defined standard.

DMX is connected using a daisy-chain configuration where the source connects to the input of the first device, the output of the first device connects to the input of the next device, and so on. The standard allows for up to 32 devices on a single DMX link.

Each receiving device typically has a means for setting the "starting channel number" that it will respond to. For example, if two 6-channel fixtures are used, the first fixture might be set to start at channel 1 so it would respond to DMX channels 1 through 6, and the next fixture would be set to start at channel 7 so it would respond to channels 7 through 12.

The greatest strength of the DMX communications protocol is that it is very simple and robust. It involves transmitting a reset condition (indicating the start of a new "packet"), a start code, and up to 512 bytes of data. Data packets are transmitted continuously. As soon as one packet is finished, another can begin with no delay if desired (usually another follows within 1 ms). If nothing is changing (i.e. no lamp levels change) the same data will be sent out over and over again. This is a great feature of DMX -- if for some reason the data is not interpreted the first time around, it will be re-sent shortly.

Not all 512 channels need to be output per packet, and in fact, it is very uncommon to find all 512 used. The fewer channels are used, the higher the "refresh" rate. It is possible to get DMX refreshes at around 1000 times per second if only 24 channels are being transmitted. If all 512 channels are being transmitted, the refresh rate is around 44 times per second.

In summary, since its design and evolution in the 1980's DMX has become the standard for lighting control. It is flexible, robust, and scalable, and its ability to control everything from dimmer packs to moving lights to foggers to lasers makes it an indispensable tool for any lighting designer or lighting performer.

Keeping Your G-Streak™ As Good As New

The fixture you've received is a rugged, tough piece of pro lighting equipment, and as long as you take care of it, it will take care of you. That said, like anything, you'll need to take care of it if you want it to operate as designed. You should absolutely keep the fixture clean, especially if you are using it in an environment with a lot of dust, fog, haze, wild animals, wild teenagers or spilled drinks.

Cleaning the optics routinely with a suitable glass cleaner will greatly improve the quality of light output. Keeping the fans free of dust and debris will keep the fixture running cool and prevent damage from overheating.

In transit, keep the fixtures in cases. You wouldn't throw a prized guitar, drumset, or other piece of expensive gear into a gear trailer without a case, and similarly, you shouldn't even think about doing it with your shiny new light fixtures.

Common sense and taking care of your fixtures will be the single biggest thing you can do to keep them running at peak performance and let you worry about designing a great light show, putting on a great concert, or maximizing your client's satisfaction and "wow factor." That's what it's all about, after all!

Returns (Gasp!)

We've taken a lot of precautions to make sure you never even have to worry about sending a defective unit back, or sending a unit in for service. But, like any complex piece of equipment designed and built by humans, once in a while, something doesn't go as planned. If you find yourself with a fixture that isn't behaving like a good little fixture should, you'll need to obtain a Return Authorization (RA).

Don't worry, this is easy. Just go to our website and open a support ticket at www.blizzardlighting.com/tickets, and we'll issue you an RA. Then, you'll need to send the unit to us using a trackable, pre-paid freight method. We suggest using USPS Priority or UPS. Make sure you carefully pack the fixture for transit, and whenever possible, use the original box & packing for shipping.

When returning your fixture for service, be sure to include the following:

- 1.) Your contact information (Name, Address, Phone Number, Email address).
- 2.) The RA# issued to you
- 3.) A brief description of the problem/symptoms.

We will, at our discretion, repair or replace the fixture. Please remember that any shipping damage which occurs in transit to us is the customer's responsibility, so pack it well!

Shipping Issues

Damage incurred in shipping is the responsibility of the shipper, and must be reported to the carrier immediately upon receipt of the items. Claims must be made within seven (7) days of receipt.

Tech Specs!

Weight & Dimensions	
Width	10.6 inches (270 mm)
Depth	5.9 inches (149 mm)
Height	14.3 inches (364 mm)
Weight	12.8 lbs (5.8 kg)
Power	
Operating Voltage	90-260VAC 50/60Hz (autoranging)
Power Consumption	91w, 1.40a, pf: .65
Fuse	4A, 250V
Light Source	
LED	50W White COB LED Source
Optical	
Beam Angle	2° - 7°
Luminous Intensity	128,552 Lux @ 1m 15,871 Lux @ 5m
Movement Range	
Pan	630°/540°/360°
Tilt	270°/180°/90°
Thermal	
Max. Operating Temp.	104° F (40 degrees C) ambient
Control	
Protocol	USITT DMX-512
DMX Channels	9/11 channel
Input	3-pin XLR Male
Output	3-pin XLR Female
Other Information	
I changed my password to "incorrect" so that when I forget it, it always reminds me "Your password is "incorrect"	
Warranty	2-year limited warranty, does not cover malfunction caused by damage to LED's.

DISCLAIMER:

The power connector fitted to the fixture and fixture cord are designed for compatibility with products manufactured by Neutrik AG, Neutrik USA and their related entities, however they are not manufactured by, affiliated with or endorsed by Neutrik AG, Neutrik USA, or any related entity. Neutrik® and powerCON® are registered trademarks of Neutrik AG.



**Enjoy your product!
Our sincerest thanks for your purchase!
--The team @ Blizzard Lighting**