

WEATHER SYSTEM™

cob



Blizzard Lighting, LLC
www.blizzardlighting.com
Waukesha, WI USA
Copyright (c) 2014

TABLE OF CONTENTS

Weather System COB™	1
1. Getting Started	3
What's In The Box?	3
Getting It Out Of The Box	3
Powering Up!	3
Getting A Hold Of Us	3
Safety Instructions (Don't Stick Your Hand In The Toaster!)	4
2. Meet The Weather System COB™	5
Features	5
DMX Quick Reference	5
The Weather System COB™ Pin-up Picture	6
3. Setup	7
Fuse Replacement	7
Connecting A Bunch Of Weather System COB™ Fixtures	7
Data/DMX Cables	7
Cable Connectors	8
3-Pin??? 5-Pin??? Huh?	8
Take It To The Next Level: Setting up DMX Control	8
Fixture Linking (Master/Slave Mode)	9
Mounting/Rigging	9
4. Operating Adjustments	10
Navigating The Control Panel	10
Control Panel Menu Structure	11
DMX Mode	12
Set the DMX Starting Address	12
DMX Channel Mode	12
Slave Mode	12
Static Colors, Auto Mode & Sound Active Mode	12
Static Colors	12
Built-In Programs	12
Auto Mode	12
Sound Active Mode	12
Standalone (Program) Mode	13
Manual Color Adjustment	13
The Weather System COB™ Foot Switch Controller	13
5. Appendix	17
A Quick DMX Lesson	17
Troubleshooting	17
Keeping Your Weather System COB™ As Good As New	18
Returns (Gasp!)	18
Shipping Issues	18
Tech Specs	19

1. GETTING STARTED

What's In The Box?

- 1 x Weather System COB™ Fixture LED Bar w/Case
- 1 x Tripod Lighting Stand w/Case
- 1 x Foot Switch Controller
- 2 x Mounting Brackets
- This Lovely User Manual

Getting It Out Of The Box

Congratulations on purchasing one of the coolest LED lighting systems anywhere! Now that you're the proud owner of a Weather System COB™ (or hopefully, MORE!), you should carefully unpack the box and check the contents to ensure that all parts are present and in good condition. If anything looks as if it has been damaged in transit, notify the shipper immediately and keep the packing material for inspection. Again, please save the carton and all packing materials. If a fixture must be returned to the factory, it is important that the fixture be returned in the original factory box and packing.

Powering Up!

All fixtures must be powered directly off a switched circuit and **cannot be run off a rheostat (variable resistor) or dimmer circuit, even if the rheostat or dimmer channel is used solely for a 0% to 100% switch.**

AC Voltage Switch - Not all fixtures have a voltage select switch, so please verify that the fixture you receive is suitable for your local power supply. See the label on the fixture or refer to the fixture's specifications chart for more information. A fixture's listed current rating is its average current draw under normal conditions. Check the fixture or device carefully to make sure that if a voltage selection switch exists that it is set to the correct line voltage you will use.

Warning! Verify that the voltage select switch on your unit matches the line voltage applied. Damage to your fixture may result if the line voltage applied does not match the voltage indicated on the voltage selector switch. All fixtures must be connected to circuits with a suitable Ground (Earthing).

Getting A Hold Of Us

If something is wrong, just give us a call or send an email. We'll be happy to help, honest.

Blizzard Lighting
N16 W23390 Stoneridge Dr. Ste E
Waukesha, WI 53188 USA
www.blizzardlighting.com
414-395-8365
Email: support@blizzardlighting.com

Disclaimer: The information and specifications contained in this document are subject to change without notice. Blizzard Lighting™ assumes no responsibility or liability for any errors or omissions that may appear in this user manual. Blizzard Lighting™ reserves the right to update the existing document or to create a new document to correct any errors or omissions at any time. You can download the latest version of this document from www.blizzardlighting.com.

Author:	Date:	Last Edited:	Date:
J. Thomas	3/14/2014	J. Thomas	3/19/2014

SAFETY INSTRUCTIONS



Please read these instructions carefully. They include important information about the installation, usage and maintenance of this product.

- Please keep this User Guide for future use. If you sell the unit to someone else, be sure that they also receive this User Guide.
- ALWAYS make sure that you are connecting to the proper voltage, and that the line voltage you are connecting to is not higher than that stated on the decal or rear panel of the fixture.
- This product is intended for indoor use only.
- To prevent risk of fire or shock, do not expose fixture to rain or moisture.
- Make sure there are no flammable materials close to the unit while operating.
- The unit must be installed in a location with adequate ventilation, at least 20in (50cm) from adjacent surfaces. Be sure that no ventilation slots are blocked.
- ALWAYS disconnect from the power source before servicing or replacing fuse and be sure to replace with same fuse size and type.
- ALWAYS secure fixture using a safety chain. NEVER carry the fixture by its cord. Use its carrying handles.
- DO NOT operate at ambient temperatures higher than 104°F (40°C).
- In the event of a serious operating problem, stop using the unit immediately. NEVER try to repair the unit by yourself. Repairs carried out by unskilled people can lead to damage or malfunction. Please contact the nearest authorized technical assistance center. Always use the same type spare parts.
- NEVER connect the device to a dimmer pack.
- Make sure the power cord is never crimped or damaged.
- Never disconnect the power cord by pulling or tugging on the cord.
- Avoid direct eye exposure to the light source while it is on.

Caution! There are no user serviceable parts inside the unit. Do not open the housing or attempt any repairs yourself. In the unlikely event your unit may require service, please contact Blizzard Lighting at support@blizzardlighting.com.

2. MEET THE WEATHER SYSTEM COB™

MAIN FEATURES:

- User selectable 2/3/4/7/8/14/15 DMX channels
- 4x Tri-Color RGB 30W COB LEDs, 30° beam angle
- Easy to use four pedal foot control switch with 16ft cord
- Independent fixture swivel/tilt positioning + height adjustment
- RGB color mixing in standalone, master/slave and DMX modes
- Automated programs via master/slave & standalone modes
- Sound activated programs in master/slave & standalone modes
- 3-pin male input and 3-pin female output
- Adjustable stand & carrying case
- Heavy duty, black aluminum housing

CONTROL:

- Easy to use 4-pedal foot switch
- USITT DMX-512, multiple DMX channel modes
- 4-button LED control panel

DMX Quick Reference (15/14/8/7 - Channel Modes)

Ch.	15-Channel	14-Channel	8-Channel	7-Channel
1	Built-in Programs	Red - Fixture 1	Red - Fixtures 1+2	Red (global)
2	Dimmer	Green - Fixture 1	Green - Fixtures 1+2	Green (global)
3	Strobe	Blue - Fixture 1	Blue - Fixtures 1+2	Blue (global)
4	Red - Fixture 1	Red - Fixture 2	Red - Fixtures 3+4	Built-in Programs
5	Green - Fixture 1	Green - Fixture 2	Green - Fixtures 3+4	Speed
6	Blue - Fixture 1	Blue - Fixture 2	Blue - Fixtures 3+4	Strobe
7	Red - Fixture 2	Red - Fixture 3	Strobe	Dimmer
8	Green - Fixture 2	Green - Fixture 3	Dimmer	---
9	Blue - Fixture 2	Blue - Fixture 3	---	---
10	Red - Fixture 3	Red - Fixture 4	---	---
11	Green - Fixture 3	Green - Fixture 4	---	---
12	Blue - Fixture 3	Blue - Fixture 4	---	---
13	Red - Fixture 4	Strobe	---	---
14	Green - Fixture 4	Dimmer	---	---
15	Blue - Fixture 4	---	---	---

DMX Quick Reference (4/3/2 - Channel Modes)

Ch.	4-Channel	3-Channel	2-Channel
1	Red (global)	Red (global)	Built-in Programs
2	Green (global)	Green (global)	Speed
3	Blue (global)	Blue (global)	---
4	Dimmer	---	---

Figure 1: The Weather System COB™ Pin-Up Picture

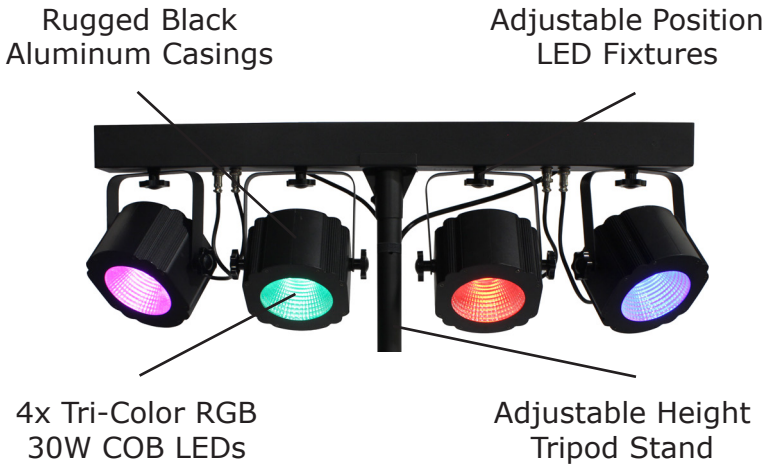
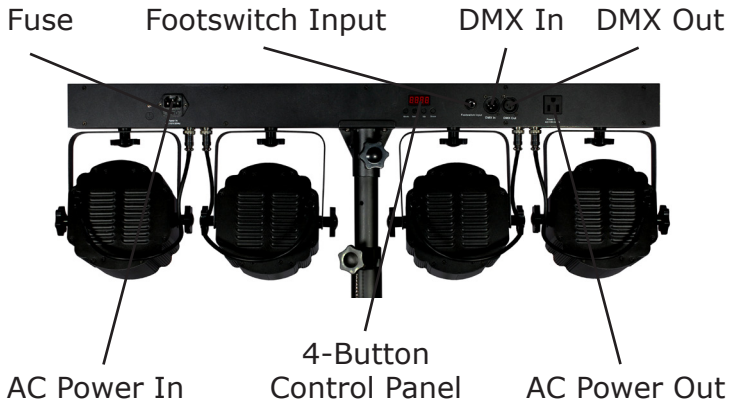


Figure 2: The Rear Connections



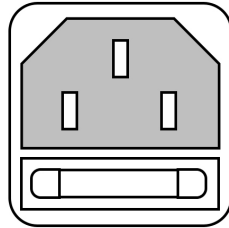
3. SETUP



Before replacing a fuse, disconnect power cord. ALWAYS replace with the same type and rating of fuse.

Fuse Replacement

With a flat head screwdriver, wedge the fuse holder out of its housing. Remove the damaged fuse from its holder and replace with exact same type fuse. Insert the fuse holder back in its place and reconnect power.



Connecting A Bunch of Weather System COB™ Fixtures

You will need a serial data link to run light shows using a DMX-512 controller or to run shows on two or more fixtures set to sync in master/slave operating mode. The combined number of channels required by all the fixtures on a serial data link determines the number of fixtures the data link can support.

Fixtures on a serial data link must be daisy chained in one single line. Also, connecting more than 32 fixtures on one serial data link without the use of a DMX optically-isolated splitter may result in deterioration of the digital DMX signal.

The maximum recommended cable-run distance is 500 meters (1640 ft). The maximum recommended number of fixtures on a serial data link is 32 fixtures.

Data/DMX Cabling

To link fixtures together you'll need data cables. You should use data-grade cables that can carry a high quality signal and are less prone to electromagnetic interference.

For instance, Belden© 9841 meets the specifications for EIA RS-485 applications. Standard microphone cables will "probably" be OK, but note that they cannot transmit DMX data as reliably over long distances. In any event, the cable should have the following characteristics:

2-conductor twisted pair plus a shield
Maximum capacitance between conductors – 30 pF/ft.
Maximum capacitance between conductor & shield – 55 pF/ft.
Maximum resistance of 20 ohms / 1000 ft.
Nominal impedance 100 – 140 ohms

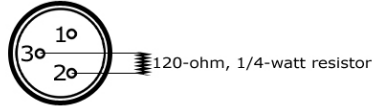
Cable Connectors

Cables must have a male XLR connector on one end and a female XLR connector on the other end. (Duh!)



A Word on Termination: DMX is a resilient communication protocol, however errors still occasionally occur. Termination reduces signal errors, and therefore best practices include use of a terminator in all circumstances. If you are experiencing problems with erratic fixture behavior, especially over long signal cable runs, a terminator may help improve performance.

To build your own DMX Terminator:
Obtain a 120-ohm, 1/4-watt resistor, and wire it between pins 2 & 3 of the last fixture. They are also readily available from specialty retailers.



CAUTION: Do not allow contact between the common and the fixture's chassis ground. Grounding the common can cause a ground loop, and your fixture may perform erratically. Test cables with an ohm meter to verify correct polarity and to make sure the pins are not grounded or shorted to the shield or each other.

3-Pin??? 5-Pin??? Huh?!?

If you use a controller with a 5 pin DMX output connector, you will need to use a 5 pin to 3 pin adapter. They are widely available over the internet and from specialty retailers. If you'd like to build your own, the chart below details a proper cable conversion:

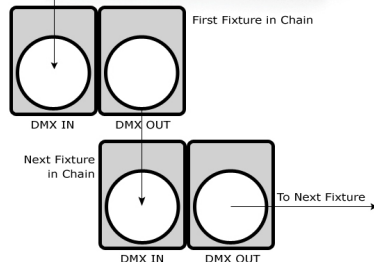
Conductor	3-Pin Female (Output)	5-Pin Male (Input)
Ground/Shield	Pin 1	Pin 1
DMX Data (-)	Pin 2	Pin 2
DMX Data (+)	Pin 3	Pin 3
Not Used.	No Connection.	No Connection.
Not Used.	No Connection.	No Connection.

Take It To The Next Level: Setting Up DMX Control

Step 1: Connect the male connector of the DMX cable to the female connector (output) on the controller.



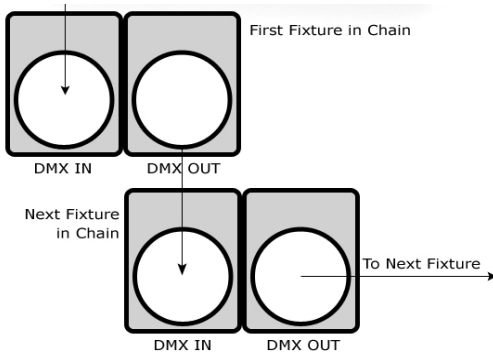
Step 2: Connect the female connector of the DMX cable to the first fixture's male connector (input). *Note:* It doesn't matter which fixture address is the first one connected. We recommend connecting the fixtures in terms of their proximity to the controller, rather than connecting the lowest fixture number first, and so on.



Step 3: Connect other fixtures in the chain from output to input as above. Place a DMX terminator on the output of the final fixture to ensure best communication.

Fixture Linking (Master/Slave Mode)

1. Connect the (male) 3 pin connector side of the DMX cable to the output (female) 3 pin connector of the first fixture.
2. Connect the end of the cable coming from the first fixture which will have a (female) 3 pin connector to the input connector of the next fixture consisting of a (male) 3 pin connector. Then, proceed to connect from the output as stated above to the input of the following fixture and so on.



A quick note: Often, the setup for Master-Slave and Standalone operation requires that the first fixture in the chain be initialized for this purpose via either settings in the control panel or DIP-switches. Secondly, the fixtures that follow may also require a slave setting.

Check the **"Operating Adjustments"** section in this manual for complete instructions for this type of setup and configuration.

Mounting & Rigging

This fixture may be mounted in any SAFE position provided there is enough room for ventilation.

It is important never to obstruct the fan or vents pathway. Mount the fixture using a suitable "C" or "O" type clamp. The clamp should be rated to hold at least 10x the fixture's weight to ensure structural stability. Do not mount to surfaces with unknown strength, and ensure properly "rated" rigging is used when mounting fixtures overhead.

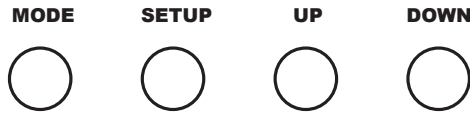
Adjust the angle of the fixture by loosening both knobs and tilting the fixture. After finding the desired position, retighten both knobs.

- When selecting installation location, take into consideration lamp replacement access (if applicable) and routine maintenance.
- Safety cables **MUST ALWAYS** be used.
- Never mount in places where the fixture will be exposed to rain, high humidity, extreme temperature changes or restricted ventilation.

4. OPERATING ADJUSTMENTS

The Control Panel

All the goodies and different modes possible with the Weather System COB™ are accessed by using the control panel on the side of the fixture. There are 4 control buttons below the LED display which allow you to navigate through the various control panel menus.



<MODE>

Is used to navigate the various modes.

<SETUP>

Is used to enter into the selected mode setup.

<UP>

Scrolls through menu items and numbers in ascending order.

<DOWN>

Scrolls through menu items and numbers in descending order.

The Control Panel LED Display shows the menu items listed on the **Control Panel Menu Structure** on page 11. Use the **<MODE>** button to navigate your choices. To edit a setting, push the **<SETUP>** button, then use the **<UP>** and **<DOWN>** buttons again to scroll through your options.

Control Panel Menu Structure

<p><i>d00 1</i> —————→</p> <p> →</p> <p> →</p> <p> →</p> <p> →</p> <p> →</p> <p> →</p> <p> →</p> <p> →</p> <p> →</p>	<p><i>d00 1 - d5 12</i></p> <p><i>2-ch</i></p> <p><i>3-ch</i></p> <p><i>4-ch</i></p> <p><i>7-ch</i></p> <p><i>8-ch</i></p> <p><i>14ch</i></p> <p><i>15-ch</i></p>	<p>To choose the DMX address</p> <p>To choose 2 channel DMX mode</p> <p>To choose 3 channel DMX mode</p> <p>To choose 4 channel DMX mode</p> <p>To choose 7 channel DMX mode</p> <p>To choose 8 channel DMX mode</p> <p>To choose 14 channel DMX mode</p> <p>To choose 15 channel DMX mode</p>
<p><i>SLAV</i> —————→</p>		<p>Sets the fixture to run in slave mode</p>
<p><i>SU--</i> —————→</p>	<p><i>SU00-SU3 1</i></p>	<p>Sound active (-/+ = mic sensitivity)</p>
<p><i>Colr</i> —————→</p> <p> →</p> <p> →</p> <p> →</p>	<p><i>r000 - r255</i></p> <p><i>g000 - g255</i></p> <p><i>b000 - b255</i></p>	<p>Manual Color Adjustment</p> <p>Red Intensity (0% <--> 100%)</p> <p>Green Intensity (0% <--> 100%)</p> <p>Blue Intensity (0% <--> 100%)</p>
<p><i>Pr---</i> —————→</p> <p> →</p> <p> →</p> <p> →</p>	<p><i>Pr0 1 - Pr 14</i></p> <p><i>SP0 1 - SPFL</i></p> <p><i>F500 - F599</i></p>	<p>Static Colors & built-in programs</p> <p>Speed adjustment (slow <--> fast)</p> <p>Strobe speed (slow <--> fast)</p>
<p><i>AUTO</i> —————→</p> <p> →</p> <p> →</p>	<p><i>SP0 1 - SPFL</i></p> <p><i>F500 - F599</i></p>	<p>Auto mode speed (slow <--> fast)</p> <p>Auto mode strobe speed (slow <--> fast)</p>

DMX Mode

Allows the unit to be controlled by any universal DMX controller.

Set the DMX Starting Address

1.) The default mode for the fixture is DMX, which appears as **d001** on the LED readout. To select a different DMX address, hit the **<SETUP>** button and use the **<UP/DOWN>** buttons to select the your desired starting DMX address ranging from **d001 - d512** then hit **<SETUP>** again to confirm your choice.

DMX Channel Mode

1.) To change the DMX channel mode, use the **<MODE>** button to scroll to **d001** and hit the **<SETUP>** button. Push the **<SETUP>** button again and use the **<UP/DOWN>** buttons to scroll through your choices of **2-ch, 3-ch, 4-ch, 7-ch, 8-ch, 14ch** or **15ch**. Press **<MODE>** to confirm your choice.

Slave Mode

1.) To use as a slave unit, simply use the **<MODE>** button to scroll to **SLAu**. This Weather System™ COB will now be in slave mode and follow the master unit, which is the 1st Weather System™ COB in the DMX chain.

Static Colors, Auto Mode, & Sound Active Modes:

Allows a single or Master/Slaved units to run factory installed programs at user selectable speeds.

Static Colors

1.) To use one of the 7 built-in static colors (*8 is off*), use the **<MODE>** button to scroll to **Pr-1**, and hit **<SETUP>**. Use the **<UP/DOWN>** buttons to scroll through the static color choices:

1--r (red)	2--g (yellow)	3--g (green)	4--gb (teal)
5--b (blue)	6--rb (magenta)	7--wb (white)	8OFF (off)

2.) Push the **<SETUP>** button to confirm your choice. Now you can adjust the strobe speed by selecting the strobe speed adjustment settings of **FS01 - FS99** (slow <--> fast).

Built-in Programs

1.) To set the fixture to run a single built-in program, use the **<MODE>** button to scroll to **Pr--**, and press the **<SETUP>** button. Then use the **<UP/DOWN>** buttons to scroll through the built-in program choices of **Pr02-Pr14** and push the **<SETUP>** button to confirm your choice. Now you can adjust the speed of the program by using the **<UP/DOWN>** buttons and choose from **SP01 - SPFL** (slow <--> fast), and push the **<SETUP>** button. To conclude setup, you now have the option to adjust the strobe speed of the program by selecting the strobe adjustment settings of **FS01 - FS99** (slow <--> fast).

Auto Mode

1.) To set the fixture to run in auto mode, use the **<MODE>** button to scroll to **AUTO**, and hit **<SETUP>**. You can now adjust the speed by using the **<UP/DOWN>** buttons and choose from **SP01 - SPFL** (slow <--> fast). To confirm your choice press the **<SETUP>** button You can now adjust the strobe speed by selecting the strobe adjustment settings of **FS01 - FS99** (slow <--> fast).

Sound Active Mode:

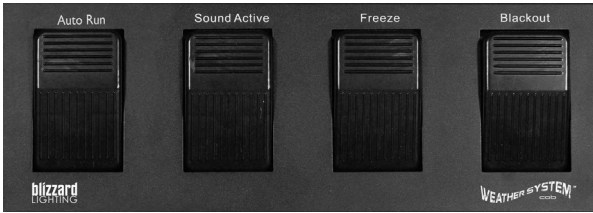
1.) To use this fixture in sound active mode, scroll to **SU--** using the **<MODE>** button. Then using the **<UP/DOWN>** buttons, choose the built-in sound active chase pattern. Adjusting the settings from **SU01 - SU31** will adjust the built-in microphone sensitivity level (low <--> high).

Manual Color Adjustment:

Allows the user to adjust the color balance of the fixture. These settings are global, they will effect all modes.

- 1.) Use the **<MODE>** button to navigate to **Colr** and hit the **<SETUP>** button.
- 2.) Now you can navigate to **r255, g255, or b255** and use the **<UP/DOWN>** buttons to adjust the global intensity of red, green, or blue from **000 - 255**.

The Weather System COB™ Foot Switch Controller



Pedal 1 - Auto Run

When you step on pedal 1 on the foot controller, it will set your fixtures to run in auto mode. To step on pedal 1 again from here, it will skip to the next program (2-14), and then continue to run the programs in sequence from that point.

Pedal 2 - Sound Active

When you step on pedal 2 on the foot controller, it will set your fixtures to run in sound active mode. The built-in microphone sensitivity settings are adjustable from the LED control panel menu.

Pedal 3 - Freeze

When you step on pedal 3 on the foot controller, it will freeze/suspend the currently running program. Step on pedal 3 again, and the Weather System COB™ will continue running the suspended program.

Pedal 4 - Blackout

When you step on pedal 4 on the foot controller, it will blackout the currently running program. Step on pedal 4 again, and the Weather System COB™ will continue running the program where it left off.

DMX Values In-Depth (15-Channel Mode)

Channel	Value	What It Does
1	000 <--> 009 010 <--> 249 250 <--> 255	No Function Auto Mode Sound Active Mode
2	000 <--> 255	Dimmer (0% <--> 100%)
3	000 <--> 009 010 <--> 255	No Function Strobe (slow <--> fast)
4	000 <--> 255	Red - Fixture 1 (0% <--> 100%)
5	000 <--> 255	Green - Fixture 1 (0% <--> 100%)
6	000 <--> 255	Blue - Fixture 1 (0% <--> 100%)
7	000 <--> 255	Red - Fixture 2 (0% <--> 100%)
8	000 <--> 255	Green - Fixture 2 (0% <--> 100%)
9	000 <--> 255	Blue - Fixture 2 (0% <--> 100%)
10	000 <--> 255	Red - Fixture 3 (0% <--> 100%)
11	000 <--> 255	Green - Fixture 3 (0% <--> 100%)
12	000 <--> 255	Blue - Fixture 3 (0% <--> 100%)
13	000 <--> 255	Red - Fixture 4 (0% <--> 100%)
14	000 <--> 255	Green - Fixture 4 (0% <--> 100%)
15	000 <--> 255	Blue - Fixture 4 (0% <--> 100%)

DMX Values In-Depth (14-Channel Mode)

Channel	Value	What It Does
1	000 <--> 255	Red - Fixture 1 (0% <--> 100%)
2	000 <--> 255	Green - Fixture 1 (0% <--> 100%)
3	000 <--> 255	Blue - Fixture 1 (0% <--> 100%)
4	000 <--> 255	Red - Fixture 2 (0% <--> 100%)
5	000 <--> 255	Green - Fixture 2 (0% <--> 100%)
6	000 <--> 255	Blue - Fixture 2 (0% <--> 100%)
7	000 <--> 255	Red - Fixture 3 (0% <--> 100%)
8	000 <--> 255	Green - Fixture 3 (0% <--> 100%)
9	000 <--> 255	Blue - Fixture 3 (0% <--> 100%)
10	000 <--> 255	Red - Fixture 4 (0% <--> 100%)
11	000 <--> 255	Green - Fixture 4 (0% <--> 100%)
12	000 <--> 255	Blue - Fixture 4 (0% <--> 100%)
13	000 <--> 255	Strobe (slow <--> fast)
14	000 <--> 255	Dimmer (0% <--> 100%)

DMX Values In-Depth (8-Channel Mode)

Channel	Value	What It Does
1	000 <--> 255	Red - Fixtures 1+2 (0% <--> 100%)
2	000 <--> 255	Green - Fixtures 1+2 (0% <--> 100%)
3	000 <--> 255	Blue - Fixtures 1+2 (0% <--> 100%)
4	000 <--> 255	Red - Fixtures 3+4 (0% <--> 100%)
5	000 <--> 255	Green - Fixtures 3+4 (0% <--> 100%)
6	000 <--> 255	Blue - Fixtures 3+4 (0% <--> 100%)
7	000 <--> 255	Strobe (slow <--> fast)
8	000 <--> 255	Dimmer (0% <--> 100%)

DMX Values In-Depth (7-Channel Mode)

Channel	Value	What It Does
1	000 <--> 255	Red - Global (0% <--> 100%)
2	000 <--> 255	Green - Global (0% <--> 100%)
3	000 <--> 255	Blue - Global (0% <--> 100%)
4	000 <--> 009 010 <--> 019 020 <--> 029 030 <--> 039 040 <--> 049 050 <--> 059 060 <--> 069 070 <--> 079 080 <--> 089 090 <--> 099 100 <--> 109 110 <--> 119 120 <--> 129 130 <--> 139 140 <--> 149 150 <--> 159 160 <--> 169 170 <--> 179 180 <--> 189 190 <--> 199 200 <--> 209 210 <--> 219 220 <--> 229 230 <--> 239 240 <--> 255	No Function Red Yellow Green Cyan Blue Purple White Program 1 Program 2 Program 3 Program 4 Program 5 Program 6 Program 7 Program 8 Program 9 Program 10 Program 11 Program 12 Program 13 Program 14 Program 15 Program 16 Sound Active Mode (ch. 5 controls mic sensitivity)
5	000 <--> 255	Program Speed (0% <--> 100%)
6	000 <--> 255	Strobe (slow <--> fast)
7	000 <--> 255	Dimmer (0% <--> 100%)

DMX Values In-Depth (4-Channel Mode)

Channel	Value	What It Does
1	000 <--> 255	Red - Global (0% <--> 100%)
2	000 <--> 255	Green - Global (0% <--> 100%)
3	000 <--> 255	Blue - Global (0% <--> 100%)
4	000 <--> 255	Dimmer (0% <--> 100%)

DMX Values In-Depth (3-Channel Mode)

Channel	Value	What It Does
1	000 <--> 255	Red - Global (0% <--> 100%)
2	000 <--> 255	Green - Global (0% <--> 100%)
3	000 <--> 255	Blue - Global (0% <--> 100%)

DMX Values In-Depth (2-Channel Mode)

Channel	Value	What It Does
1	000 <--> 009	No Function
	010 <--> 019	Red
	020 <--> 029	Yellow
	030 <--> 039	Green
	040 <--> 049	Cyan
	050 <--> 059	Blue
	060 <--> 069	Purple
	070 <--> 079	White
	080 <--> 089	Program 1
	090 <--> 099	Program 2
	100 <--> 109	Program 3
	110 <--> 119	Program 4
	120 <--> 129	Program 5
	130 <--> 139	Program 6
	140 <--> 149	Program 7
	150 <--> 159	Program 8
	160 <--> 169	Program 9
170 <--> 179	Program 10	
180 <--> 189	Program 11	
190 <--> 199	Program 12	
200 <--> 209	Program 13	
210 <--> 219	Program 14	
220 <--> 229	Program 15	
230 <--> 239	Program 16	
	240 <--> 255	Sound Active Mode (ch. 2 controls mic sensitivity)
2	000 <--> 255	Program Speed (0% <--> 100%)

5. APPENDIX

A Quick Lesson On DMX

DMX covers (and is an abbreviation for) Digital MultipleXed signals. It is the most common communications standard used by lighting and related stage equipment.

DMX provides up to 512 control "channels" per data link. Each of these channels was originally intended to control lamp dimmer levels. You can think of it as 512 faders on a lighting console, connected to 512 light bulbs. Each slider's position is sent over the data link as an 8-bit number having a value between 0 and 255. The value 0 corresponds to the light bulb being completely off while 255 corresponds to the light bulb being fully on.

DMX data is transmitted at 250,000 bits per second using the RS-485 transmission standard over two wires. As with microphone cables, a grounded cable shield is used to prevent interference with other signals.

There are five pins on a DMX connector: a wire for ground (cable shield), two wires for "Primary" communication which goes from a DMX source to a DMX receiver, and two wires for a "Secondary" communication which goes from a DMX receiver back to a DMX source. Generally, the "Secondary" channel is not used so data flows only from sources to receivers. Hence, most of us are most familiar with DMX-512 as being employer over typical 3-pin "mic cables," although this does not conform to the defined standard.

DMX is connected using a daisy-chain configuration where the source connects to the input of the first device, the output of the first device connects to the input of the next device, and so on. The standard allows for up to 32 devices on a single DMX link.

Each receiving device typically has a means for setting the "starting channel number" that it will respond to. For example, if two 6-channel fixtures are used, the first fixture might be set to start at channel 1 so it would respond to DMX channels 1 through 6, and the next fixture would be set to start at channel 7 so it would respond to channels 7 through 12.

Troubleshooting

Symptom	Solution
Fixture Auto-Shut Off	Check the fan in the fixture. If it is stopped or moving slower than normal, the unit may have shut itself off due to high heat. This is to protect the fixture from overheating. Clear the fan of obstructions, or return the unit for service.
Beam is Dim	Check optical system and clean excess dust/grime. Also ensure that the 220V/110V switch is in the correct position, if applicable.
No Light Output	Check to ensure fixture is operating under correct mode, IE sound active/auto/DMX/Etc., if applicable. Contact service for more information.
Chase Speed Too Fast/Slow	Check to ensure proper setup of speed adjustment.
No Power	Check fuse, AC cord and circuit for malfunction.
No Response to Audio	Verify that the fixture is in "Sound Active" mode. Adjust Audio Sensitivity, If Applicable.
Fixture Not Responding / Responding Erratically	Make sure all connectors are seated properly and securely. Use Only DMX Cables. Install a Terminator. Check all cables for defects. Reset fixture(s).

Keeping Your Weather System COB™ As Good As New

The fixture you've received is a rugged, tough piece of pro lighting equipment, and as long as you take care of it, it will take care of you. That said, like anything, you'll need to take care of it if you want it to operate as designed. You should absolutely keep the fixture clean, especially if you are using it in an environment with a lot of dust, fog, haze, wild animals, wild teenagers or spilled drinks.

Cleaning the optics routinely with a suitable glass cleaner will greatly improve the quality of light output. Keeping the fans free of dust and debris will keep the fixture running cool and prevent damage from overheating.

In transit, keep the fixtures in cases. You wouldn't throw a prized guitar, drumset, or other piece of expensive gear into a gear trailer without a case, and similarly, you shouldn't even think about doing it with your shiny new light fixtures.

Common sense and taking care of your fixtures will be the single biggest thing you can do to keep them running at peak performance and let you worry about designing a great light show, putting on a great concert, or maximizing your client's satisfaction and "wow factor." That's what it's all about, after all!

Returns (Gasp!)

We've taken a lot of precautions to make sure you never even have to worry about sending a defective unit back, or sending a unit in for service. But, like any complex piece of equipment designed and built by humans, once in a while, something doesn't go as planned. If you find yourself with a fixture that isn't behaving like a good little fixture should, you'll need to obtain a Return Authorization (RA).

Don't worry, this is easy. Just send an email to support@blizzardlighting.com, and we'll issue you an RA. Then, you'll need to send the unit to us using a trackable, pre-paid freight method. We suggest using USPS Priority or UPS. Make sure you carefully pack the fixture for transit, and whenever possible, use the original box & packing for shipping.

When returning your fixture for service, be sure to include the following:

- 1.) Your contact information (Name, Address, Phone Number, Email address).
- 2.) The RA# issued to you
- 3.) A brief description of the problem/symptoms.

We will, at our discretion, repair or replace the fixture. Please remember that any shipping damage which occurs in transit to us is the customer's responsibility, so pack it well!

Shipping Issues

Damage incurred in shipping is the responsibility of the shipper, and must be reported to the carrier immediately upon receipt of the items. Claims must be made within seven (7) days of receipt.

Tech Specs!

Weight & Dimensions					
Width	Main Unit: 35"(890 mm), Foot Controller: 17 inches (432 mm), Power Cord: 16 ft Length				
Depth	Main Unit: 4.1"(102 mm), Foot Controller: 6 inches (152.4 mm)				
Height	Main Unit: 10.9 inches (276 mm), Foot Controller: 2½ inches (5.5 cm)				
Weight	Main Unit: 19.4 lbs (8.8 kg), Foot Controller: 3.5 lbs (1.6 kg), Stand: 8 lbs (3.63 kg)				
Power					
Operating Voltage	AC 100-240VAC, 50/60 Hertz				
Power Consumption	90W, 1.31A				
Fuse	3A 125V				
Power Factor	.60				
Light Source					
LED	4x Tri-Color RGB 30W COB LEDs				
Optical					
Beam Angle	30 degree optics standard				
Luminous Intensity	Lux/m	Red	Green	Blue	All
	1m	1,394	1,594	1,783	4,564
	2m	551	580	686	1,656
Thermal					
Max. Operating Temp.	104 degrees F (40 degrees C) ambient				
Stand					
Max. Operating Height	8 feet				
Control					
Protocol	USITT DMX-512				
DMX Channels	2/3/4/7/8/14/15 DMX Channels				
Input	3-pin XLR Male				
Output	3-pin XLR Female				
Other Operating Modes	Standalone, Master/Slave, Sound Active, Color Preset				
Other Information					
If God dwells inside us like some people say, I sure hope He likes enchiladas, because that's what He's getting.					
Warranty					
2-year limited warranty, does not cover malfunction caused by damage to LED's.					



**Enjoy your product!
Our sincerest thanks for your purchase!
--The team @ Blizzard Lighting**