

PROPAR *Seven.6*™



Blizzard Lighting, LLC
www.blizzardlighting.com
Waukesha, WI USA
Copyright (c) 2014

TABLE OF CONTENTS

ProPar Seven.6™	1
1. Getting Started	3
What's In The Box?	3
Getting It Out Of The Box	3
Powering Up!	3
Getting A Hold Of Us	3
Safety Instructions (Don't Stick Your Hand In The Toaster!)	4
2. Meet The ProPar Seven.6™ LED	5
Features	5
DMX Quick Reference	5
The ProPar Seven.6™ Pin-up Picture	6
3. Setup	7
Fuse Replacement	7
Connecting A Bunch Of ProPar Seven.6™ PAR Cans	7
Data/DMX Cables	7
Cable Connectors	8
3-Pin??? 5-Pin??? Huh?	8
Take It To The Next Level: Setting up DMX Control	8
Fixture Linking (Master/Slave Mode)	9
Mounting/Rigging	9
4. Operating Adjustments	10
Navigating The Control Panel	10
Control Panel Menu Structure	11
DMX Mode	12
Set The Starting DMX Address	12
Select the DMX Channel Mode	12
Slave Mode	12
Auto, Stand-Alone, & Built-in Program Modes	12
Built-in Static Colors	12
Auto Mode	12
Custom Program Mode (Standalone)	12
Custom Program Playback	13
Sound Active Mode	13
Set a custom color in Standalone or M/S Mode	13
Manual Color Adjustment (Global)	13
Temperature Settings	13
DMX Channel Values In-Depth	14
Troubleshooting	15
5. Appendix	16
A Quick DMX Lesson	16
Keeping Your ProPar Seven.6™ As Good As New	17
Returns (Gasp!)	17
Shipping Issues	17
Tech Specs	18

1. GETTING STARTED

What's In The Box?

- 1 x ProPar Seven.6™ Professional LED PAR Fixture
- This Lovely User Manual

Getting It Out Of The Box

Congratulations! The power of 6-in-1 RGBAW+UV color mixing is now all yours! So now that you're the proud owner of a ProPar Seven.6™ (or hopefully, *ProPars!*), you should carefully unpack the box and check the contents to ensure that all parts are present and in good condition. If anything looks as if it has been damaged in transit, notify the shipper immediately and keep the packing material for inspection. Again, please save the carton and all packing materials. If a fixture must be returned to the factory, it is important that the fixture be returned in the original factory box and packing.

Powering Up!

All fixtures must be powered directly off a switched circuit and **cannot be run off a rheostat (variable resistor) or dimmer circuit, even if the rheostat or dimmer channel is used solely for a 0% to 100% switch.**

AC Voltage Switch - Not all fixtures have a voltage select switch, so please verify that the fixture you receive is suitable for your local power supply. See the label on the fixture or refer to the fixture's specifications chart for more information. A fixture's listed current rating is its average current draw under normal conditions. Check the fixture or device carefully to make sure that if a voltage selection switch exists that it is set to the correct line voltage you will use.

Warning! Verify that the voltage select switch on your unit matches the line voltage applied. Damage to your fixture may result if the line voltage applied does not match the voltage indicated on the voltage selector switch. All fixtures must be connected to circuits with a suitable Ground (Earthing).

Getting A Hold Of Us

If something is wrong, just give us a call or send an email. We'll be happy to help, honest.

Blizzard Lighting
N16 W23390 Stoneridge Dr. Ste E
Waukesha, WI 53118 USA
www.blizzardlighting.com
414-395-8365

Disclaimer: The information and specifications contained in this document are subject to change without notice. Blizzard Lighting™ assumes no responsibility or liability for any errors or omissions that may appear in this user manual. Blizzard Lighting™ reserves the right to update the existing document or to create a new document to correct any errors or omissions at any time. You can download the latest version of this document from www.blizzardlighting.com.

Author:	Date:	Last Edited:	Date:
J. Thomas	8/4/2014	J. Thomas	8/7/2014

SAFETY INSTRUCTIONS



Please read these instructions carefully. They include important information about the installation, usage and maintenance of this product.

- Please keep this User Guide for future use. If you sell the unit to someone else, be sure that they also receive this User Guide.
- ALWAYS make sure that you are connecting to the proper voltage, and that the line voltage you are connecting to is not higher than that stated on the decal or rear panel of the fixture.
- This product is intended for indoor use only.
- To prevent risk of fire or shock, do not expose fixture to rain or moisture.
- Make sure there are no flammable materials close to the unit while operating.
- The unit must be installed in a location with adequate ventilation, at least 20in (50cm) from adjacent surfaces. Be sure that no ventilation slots are blocked.
- ALWAYS disconnect from the power source before servicing or replacing fuse and be sure to replace with same fuse size and type.
- ALWAYS secure fixture using a safety chain. NEVER carry the fixture by its cord. Use its carrying handles.
- DO NOT operate at ambient temperatures higher than 104°F (40°C).
- In the event of a serious operating problem, stop using the unit immediately. NEVER try to repair the unit by yourself. Repairs carried out by unskilled people can lead to damage or malfunction. Please contact the nearest authorized technical assistance center. Always use the same type spare parts.
- NEVER connect the device to a dimmer pack.
- Make sure the power cord is never crimped or damaged.
- Never disconnect the power cord by pulling or tugging on the cord.
- Avoid direct eye exposure to the light source while it is on.

Caution! There are no user serviceable parts inside the unit. Do not open the housing or attempt any repairs yourself. In the unlikely event your unit may require service, please contact Blizzard Lighting at www.blizzardlighting.com/tickets.

2. MEET THE PROPAR SEVEN.6™ LED PAR

MAIN FEATURES:

- User selectable 3/5/8 or 11 DMX channels
- Full color mixing in standalone, master/slave and DMX modes
- Built-in automated programs via master/slave
- Built-in sound activated programs via master/slave
- Easy to use LED digital control panel
- 3-pin male input and 3-pin female output
- Dual mounting yoke allows flexibility in positioning
- Aluminum die-casting housing

OPTICAL:

- Beam Angle: 25°
- 4,580 Lux @ 1m, 1,240 Lux @ 2m (full on)
- 1000hz flicker-free LED drivers
- Light Source: 7* 15-watt 6-in-1 LEDs, 100,000 hours

CONTROL:

- USITT DMX-512 (3/6/8/11 Channels)
- 3-pin Input/Output
- LED 4-button control panel

DMX Quick Reference

Channel	11-Channel	8-Channel	6-Channel	3-Channel
1	Dimmer	Dimmer	Red Intensity	Hue
2	Red Intensity	Red Intensity	Green Intensity	Saturation
3	Green Intensity	Green Intensity	Blue Intensity	Value
4	Blue Intensity	Blue Intensity	Amber Intensity	---
5	Amber Intensity	Amber Intensity	White Intensity	---
6	White Intensity	White Intensity	UV Intensity	---
7	UV Intensity	UV Intensity	---	---
8	Strobe	Dimming Modes	---	---
9	Built-in Programs	---	---	---
10	Speed	---	---	---
11	Dimming Modes	---	---	---

Figure 1: The ProPar Seven.6™ Pin-Up Picture



Figure 2: The Rear Connections



3. SETUP



Before replacing a fuse, disconnect power cord. ALWAYS replace with the same type and rating of fuse.

Fuse Replacement

CAUTION! The ProPar Seven.6™ utilizes a high-output switch-mode power supply with an internal fuse. Under normal operating conditions, the fuse should not require replacement. The fuse is field replaceable, however it is an advanced procedure suited to qualified individuals. Should your ProPar Seven.6™ fuse require replacement, please contact Blizzard Lighting for instructions, or to return your unit for service.

Connecting A Bunch of ProPar Seven.6™ Fixtures

You will need a serial data link to run light shows using a DMX-512 controller or to run shows on two or more fixtures set to sync in master/slave operating mode. The combined number of channels required by all the fixtures on a serial data link determines the number of fixtures the data link can support.

Fixtures on a serial data link must be daisy chained in one single line. Also, connecting more than 32 fixtures on one serial data link without the use of a DMX optically-isolated splitter may result in deterioration of the digital DMX signal.

The maximum recommended cable-run distance is 500 meters (1640 ft). The maximum recommended number of fixtures on a serial data link is 32 fixtures.

Data/DMX Cabling

To link fixtures together you'll need data cables. You should use data-grade cables that can carry a high quality signal and are less prone to electromagnetic interference.

For instance, Belden© 9841 meets the specifications for EIA RS-485 applications. Standard microphone cables will "probably" be OK, but note that they cannot transmit DMX data as reliably over long distances. In any event, the cable should have the following characteristics:

2-conductor twisted pair plus a shield

Maximum capacitance between conductors – 30 pF/ft.

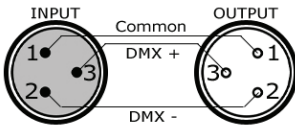
Maximum capacitance between conductor & shield – 55 pF/ft.

Maximum resistance of 20 ohms / 1000 ft.

Nominal impedance 100 – 140 ohms

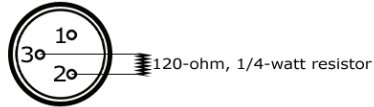
Cable Connectors

Cables must have a male XLR connector on one end and a female XLR connector on the other end. (Duh!)



A Word on Termination: DMX is a resilient communication protocol, however errors still occasionally occur. Termination reduces signal errors, and therefore best practices include use of a terminator in all circumstances. If you are experiencing problems with erratic fixture behavior, especially over long signal cable runs, a terminator may help improve performance.

To build your own DMX Terminator:
Obtain a 120-ohm, 1/4-watt resistor, and wire it between pins 2 & 3 of the last fixture. They are also readily available from specialty retailers.



CAUTION: Do not allow contact between the common and the fixture's chassis ground. Grounding the common can cause a ground loop, and your fixture may perform erratically. Test cables with an ohm meter to verify correct polarity and to make sure the pins are not grounded or shorted to the shield or each other.

3-Pin??? 5-Pin??? Huh?!?

If you use a controller with a 5 pin DMX output connector, you will need to use a 5 pin to 3 pin adapter. They are widely available over the internet and from specialty retailers. If you'd like to build your own, the chart below details a proper cable conversion:

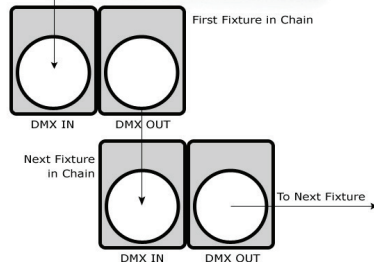
Conductor	3-Pin Female (Output)	5-Pin Male (Input)
Ground/Shield	Pin 1	Pin 1
DMX Data (-)	Pin 2	Pin 2
DMX Data (+)	Pin 3	Pin 3
Not Used.	No Connection.	No Connection.
Not Used.	No Connection.	No Connection.

Take It To The Next Level: Setting Up DMX Control

Step 1: Connect the male connector of the DMX cable to the female connector (output) on the controller.



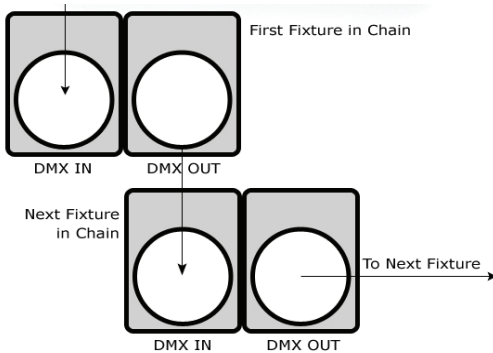
Step 2: Connect the female connector of the DMX cable to the first fixture's male connector (input). *Note:* It doesn't matter which fixture address is the first one connected. We recommend connecting the fixtures in terms of their proximity to the controller, rather than connecting the lowest fixture number first, and so on.



Step 3: Connect other fixtures in the chain from output to input as above. Place a DMX terminator on the output of the final fixture to ensure best communication.

Fixture Linking (Master/Slave Mode)

1. Connect the (male) 3 pin connector side of the DMX cable to the output (female) 3 pin connector of the first fixture.
2. Connect the end of the cable coming from the first fixture which will have a (female) 3 pin connector to the input connector of the next fixture consisting of a (male) 3 pin connector. Then, proceed to connect from the output as stated above to the input of the following fixture and so on.



A quick note: Often, the setup for Master-Slave and Standalone operation requires that the first fixture in the chain be initialized for this purpose via either settings in the control panel or DIP-switches. Secondly, the fixtures that follow may also require a slave setting.

Check the **"Operating Adjustments"** section in this manual for complete instructions for this type of setup and configuration.

Mounting & Rigging

This fixture may be mounted in any SAFE position provided there is enough room for ventilation.

It is important never to obstruct the fan or vents pathway. Mount the fixture using a suitable "C" or "O" type clamp. The clamp should be rated to hold at least 10x the fixture's weight to ensure structural stability. Do not mount to surfaces with unknown strength, and ensure properly "rated" rigging is used when mounting fixtures overhead.

Adjust the angle of the fixture by loosening both knobs and tilting the fixture. After finding the desired position, retighten both knobs.

- When selecting installation location, take into consideration lamp replacement access (if applicable) and routine maintenance.
- Safety cables **MUST ALWAYS** be used.
- Never mount in places where the fixture will be exposed to rain, high humidity, extreme temperature changes or restricted ventilation.

4. OPERATING ADJUSTMENTS

The Control Panel

All the goodies and different modes possible with the ProPar Seven.6™ LED are accessed by using the control panel on the rear of the fixture. There are 4 control buttons below the LED display which allow you to navigate through the various control panel menus.

<ESC>

Is used to navigate to the previous higher-level menu item.

<UP>

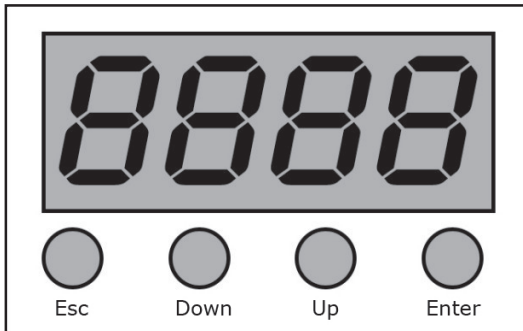
Scrolls through menu items and numbers in ascending order.

<DOWN>

Scrolls through menu items and numbers in descending order.

<ENTER>

Is used to select and confirm/store the current selection.



The Control Panel LED Display shows the menu items you select from the menu map on page #11. When a menu function is selected, the display will show immediately the first available option for the selected menu function. To select a menu item, press **<ENTER>**.

Press the **<UP/DOWN>** buttons to navigate to the desired menu function. Press the **<ENTER>** button to select the menu function currently displayed, or to enable a menu option. Use the **<UP/DOWN>** buttons to navigate any submenu options, and press the **<ENTER>** button to enable. To return to the previous option or menu without changing the value, press the **<ESC>** button.

Control Panel Menu Structure

A.001	A.001 - A.512	To choose the DMX address
ChNd	hSv	3-channel (HSV) DMX mode
	ch.06	6-channel DMX mode
	ch.08	8-channel DMX mode
	ch.11	11-channel DMX mode
SLAu	SLAu	Run the fixture as slave fixture
	NASt	Run the fixture as master fixture
chAS	coLr	Built-in static colors (1-31)
	AUto	Auto modes (1-2)
	ProG	Built-in programs (1-6)
Edit	Pr.01 - Pr.06	Custom programs (1-6) --> Scene (1-30)
SoUd	Snd.1	Sound active modes (1-4)
Stat	r.000 - r.255	Red dimmer (0% <--> 100%)
	G.000 - G255	Green dimmer (0% <--> 100%)
	b.000 - b255	Blue dimmer (0% <--> 100%)
	a.000 - a255	Amber dimmer (0% <--> 100%)
	U.000 - U255	White dimmer (0% <--> 100%)
	u.000 - u255	UV dimmer (0% <--> 100%)
tENP	cutP	Current internal temperature (celsius)
	toP	Set max internal temperature (celsius)
SEt	curr	Global R/G/B/A/W/UV intensity, effects all modes
	Syn	Synchronous function
	Scrn	LED display screen saver mode (0-30 seconds)
	rSEt	Reset to factory default settings (Yes/No)

DMX Mode

Allows the unit to be controlled by any universal DMX controller.

Set the Starting DMX Address:

The default mode for the fixture is DMX, so the first menu item that you can edit is the starting DMX address.

- 1.) Navigate the menu using the **<UP/DOWN>** buttons until you reach **A.001**.
- 2.) Push the **<ENTER>** button.
- 3.) Use the **<UP/DOWN>** buttons to select a DMX channel from **001-512**.
- 4.) Press the **<ENTER>** button to confirm.

Select the DMX Channel Mode:

- 1.) Navigate the menu using the **<UP/DOWN>** buttons until you reach **ChNd**.
- 2.) Push the **<ENTER>** button.
- 3.) Use the **<UP/DOWN>** buttons to select either **hSu**, **ch.06**, **ch.08**, or **ch.11**.
- 4.) Press the **<ENTER>** button to confirm.

Slave Mode:

To synchronize one or more fixtures to follow the actions of the Master fixture (the 1st unit in the DMX chain), perform the following steps on each Slave fixture:

- 2.) Navigate the menu using the **<UP/DOWN>** button until you reach **SLAu**.
- 3.) Push the **<ENTER>** button.
- 4.) Use the **<UP/DOWN>** buttons to select **SLAu**.
- 5.) Press the **<ENTER>** button to confirm.

Auto, Stand-Alone, & Built-in Program Modes:

Allows a single or Master/Slaved units to run factory installed programs at user selectable speeds.

Built-In Static Colors:

- 1.) Navigate the menu using the **<UP/DOWN>** button until you reach **chAS**.
- 2.) Push the **<ENTER>** button.
- 3.) Use the **<UP/DOWN>** buttons to navigate to **coLr**, and press **<ENTER>**.
- 4.) Use the **<UP/DOWN>** buttons to select from **cl.01-cl.31**.
- 5.) Press the **<ENTER>** button to confirm.

Auto Mode:

- 1.) Navigate the menu using the **<UP/DOWN>** button until you reach **chAS**.
- 2.) Push the **<ENTER>** button.
- 3.) Use the **<UP/DOWN>** buttons to navigate to **Auto**, and press **<ENTER>**.
- 4.) Use the **<UP/DOWN>** buttons to select from **at.01-at.02**, and press **<ENTER>**.
- 5.) Use the **<UP/DOWN>** buttons to select the speed from **t0.01-t0.30 (fast <-> slow)**.

Custom Program Mode (Standalone):

Create/edit up to 6 custom programs of up to 30 scenes for playback in standalone mode.

- 1.) Navigate the menu using the **<UP/DOWN>** button until you reach **Edit**.
- 2.) Push the **<ENTER>** button.
- 3.) Use the **<UP/DOWN>** buttons to navigate custom programs from **Pr.01-Pr.06**.
- 5.) Press the **<ENTER>** button.
- 5.) Use the **<UP/DOWN>** buttons to select a scene from **Sc.01-Sc.30**.
- 5.) Press the **<ENTER>** button.
- 4.) Use the **<UP/DOWN>** buttons to select **r.---** (red), **G.---** (green), **b.---** (blue), **A.---** (amber), **U.---** (white) or **u.---** (UV), and press **<ENTER>**.
- 4.) Using the **<UP/DOWN>** buttons, select the maximum level for each color between **x.000-x.255** (000=off), then press **<ENTER>** to store your scene.
- 5.) Repeat this process up to 30 times for each of the 6 custom program banks.

Custom Program Playback:

- 1.) Navigate the menu using the **<UP/DOWN>** button until you reach **chAS**.
- 2.) Push the **<ENTER>** button.
- 3.) Use the **<UP/DOWN>** buttons to navigate to **ProG**, and press **<ENTER>**.
- 4.) Press the **<ENTER>** button again, and use the **<UP/DOWN>** buttons to navigate the custom programs from **Pr.01-Pr.06**,
- 5.) Press the **<ENTER>** button to confirm your program selection.
- 6.) Use the **<UP/DOWN>** buttons to select the speed from **t0.01-t0.30 (fast <-> slow)**.

Sound Active Mode:

- 1.) Navigate the menu using the **<UP/DOWN>** button until you reach **SoUd**.
- 2.) Push the **<ENTER>** button.
- 3.) Use the **<UP/DOWN>** buttons to navigate to **ProG**, and press **<ENTER>**.
- 4.) Use the **<UP/DOWN>** buttons to select from **Snd.1-Snd.4**, and press **<ENTER>**.
- 5.) Use the **<UP/DOWN>** buttons to adjust the mic sensitivity level from **Sd.00-Sd.99** (0%<->100%), then press the **<ENTER>** button to confirm.

To set a custom color in Standalone or M/S Mode:

Allows you to create any custom mixed color by adjusting the Red, Green, Blue, Amber, White and UV values from 0-255.

- 1.) Navigate the menu using the **<UP/DOWN>** buttons until you reach **StAt**.
- 2.) Push the **<ENTER>** button.
- 3.) Press the **<UP/DOWN>** button until you reach either **r.---** (Red), **G.---** (Green), **b.---** (Blue), **A.---** (Amber), **U.---** (White), or **u.---** (UV) then press **<ENTER>**.
- 4.) Using the **<UP/DOWN>** buttons, select the maximum level for each color between **x.000-x.255** (000=off), then press **<ENTER>** to confirm.

Manual Color Adjustment (Global):

Using this function, you can select any color by adjusting the Red, Green, Blue, Amber, White and UV values from 0-255. Please note that modifying the values in this step will affect ALL modes, therefore we recommend resetting all levels to their highest value (255) after using this mode.

- 1.) Navigate the menu using the **<UP/DOWN>** buttons until you reach **SEt**.
- 2.) Push the **<ENTER>** button.
- 3.) Press the **<UP/DOWN>** button until you reach **cUrr**, then press **<ENTER>**.
- 4.) Press the **<UP/DOWN>** button until you reach either **r.---** (Red), **G.---** (Green), **b.---** (Blue), **A.---** (Amber), **U.---** (White), or **u.---** (UV) then press **<ENTER>**.
- 5.) Using the **<UP/DOWN>** buttons, select the maximum level for each color between **x.000-x.255** (000=off), then press **<ENTER>** to confirm.

Temperature Settings

Allows you to set a designated temperature protection cut off (in celsius degrees), and also displays the current fixture temperature.

- 1.) Navigate the menu using the **<UP/DOWN>** buttons until you reach **tENP**.
- 2.) Push the **<ENTER>** button.
- 3.) Use the **<UP/DOWN>** buttons to select either **cUtP** or **toP**.
- 4.) Press the **<ENTER>** button to confirm.
- 5.) **cUtP** will display the current internal temperature, and **toP** will then allow you to set the maximum temperature allowed before the temperature protection cut off is initiated.

DMX Values In-Depth (11-Channel Mode)

Channel	Value	What It Does
1	000 <--> 255	Dimmer (0% <--> 100%)
2	000 <--> 255	Red Intensity (0% <--> 100%)
3	000 <--> 255	Green Intensity (0% <--> 100%)
4	000 <--> 255	Blue Intensity (0% <--> 100%)
5	000 <--> 255	Amber Intensity (0% <--> 100%)
6	000 <--> 255	White Intensity (0% <--> 100%)
7	000 <--> 255	UV Intensity (0% <--> 100%)
8	000 <--> 255	Strobe Strobe (Slow <--> Fast)
9	000 <--> 020 021 <--> 041 042 <--> 062 063 <--> 084 085 <--> 105 106 <--> 126 127 <--> 147 148 <--> 168 169 <--> 189 190 <--> 210 211 <--> 231 231 <--> 255	Auto Program 1 (Chase Pattern) Auto Program 2 (Fade Pattern) Custom Program 1 Custom Program 2 Custom Program 3 Custom Program 4 Custom Program 5 Custom Program 6 Sound Active 1 Sound Active 2 Sound Active 3 Sound Active 4
10	000 <--> 255	Program Speed (0% <--> 100%)
11	000 <--> 127 128 <--> 255	16-bit Dimmer 32-Bit Dimmer

DMX Values In-Depth (8-Channel Mode)

Channel	Value	What It Does
1	000 <--> 255	Dimmer (0% <--> 100%)
2	000 <--> 255	Red Intensity (0% <--> 100%)
3	000 <--> 255	Green Intensity (0% <--> 100%)
4	000 <--> 255	Blue Intensity (0% <--> 100%)
5	000 <--> 255	Amber Intensity (0% <--> 100%)
6	000 <--> 255	White Intensity (0% <--> 100%)
7	000 <--> 255	UV Intensity (0% <--> 100%)
8	000 <--> 127 128 <--> 255	16-bit Dimmer 32-Bit Dimmer

DMX Values In-Depth (6-Channel Mode)

Channel	Value	What It Does
1	000 <--> 255	Red Intensity (0% <--> 100%)
2	000 <--> 255	Green Intensity (0% <--> 100%)
3	000 <--> 255	Blue Intensity (0% <--> 100%)
4	000 <--> 255	Amber Intensity (0% <--> 100%)
5	000 <--> 255	White Intensity (0% <--> 100%)
6	000 <--> 255	UV Intensity (0% <--> 100%)

DMX Values In-Depth (3-Channel, HSV Mode)

Channel	Value	What It Does
1	000 <--> 255	Hue (0% <--> 100%)
2	000 <--> 255	Saturation (0% <--> 100%)
3	000 <--> 255	Value (0% <--> 100%)

Troubleshooting

Symptom	Solution
Fixture Auto-Shut Off	Check the fan in the fixture. If it is stopped or moving slower than normal, the unit may have shut itself off due to high heat. This is to protect the fixture from overheating. Clear the fan of obstructions, or return the unit for service.
Beam is Dim	Check optical system and clean excess dust/grime. Also ensure that the 220V/110V switch is in the correct position, if applicable.
No Light Output	Check to ensure fixture is operating under correct mode, IE sound active/auto/DMX/Etc., if applicable.
Chase Speed Too Fast/Slow	Check to ensure proper setup of speed adjustment.
No Power	Check fuse, AC cord and circuit for malfunction.
Blown Fuse	Check AC cord and circuit for damage, verify that moving parts are not restricted and that unit's ventilation is not obstructed
Slow Movement	Verify that 220V/110V switch is in the correct position, if applicable. Also check that speed channels are set appropriately.
No Response to Audio	Verify that the fixture is in "Sound Active" mode. Adjust Audio Sensitivity, If Applicable.
Fixture Not Responding / Responding Erratically	Make sure all connectors are seated properly and securely. Use Only DMX Cables and/or check cables for defects. Install a Terminator. Reset fixture(s).
Fixture Moving On Its Own	Verify proper mode of operation. Is the fixture in "Auto" mode?

If your problem isn't listed, or if problems persist, please open a support ticket at www.blizzardlighting.com/tickets.

5. APPENDIX

A Quick Lesson On DMX

DMX (aka DMX-512) was created in 1986 by the United States Institute for Theatre Technology (USITT) as a standardized method for connecting lighting consoles to lighting dimmer modules. It was revised in 1990 and again in 2000 to allow more flexibility. The Entertainment Services and Technology Association (ESTA) has since assumed control over the DMX512 standard. It has also been approved and recognized for ANSI standard classification.

DMX covers (and is an abbreviation for) Digital MultipleXed signals. It is the most common communications standard used by lighting and related stage equipment.

DMX provides up to 512 control "channels" per data link. Each of these channels was originally intended to control lamp dimmer levels. You can think of it as 512 faders on a lighting console, connected to 512 light bulbs. Each slider's position is sent over the data link as an 8-bit number having a value between 0 and 255. The value 0 corresponds to the light bulb being completely off while 255 corresponds to the light bulb being fully on.

DMX data is transmitted at 250,000 bits per second using the RS-485 transmission standard over two wires. As with microphone cables, a grounded cable shield is used to prevent interference with other signals.

There are five pins on a DMX connector: a wire for ground (cable shield), two wires for "Primary" communication which goes from a DMX source to a DMX receiver, and two wires for a "Secondary" communication which goes from a DMX receiver back to a DMX source. Generally, the "Secondary" channel is not used so data flows only from sources to receivers. Hence, most of us are most familiar with DMX-512 as being employer over typical 3-pin "mic cables," although this does not conform to the defined standard.

DMX is connected using a daisy-chain configuration where the source connects to the input of the first device, the output of the first device connects to the input of the next device, and so on. The standard allows for up to 32 devices on a single DMX link.

Each receiving device typically has a means for setting the "starting channel number" that it will respond to. For example, if two 6-channel fixtures are used, the first fixture might be set to start at channel 1 so it would respond to DMX channels 1 through 6, and the next fixture would be set to start at channel 7 so it would respond to channels 7 through 12.

The greatest strength of the DMX communications protocol is that it is very simple and robust. It involves transmitting a reset condition (indicating the start of a new "packet"), a start code, and up to 512 bytes of data. Data packets are transmitted continuously. As soon as one packet is finished, another can begin with no delay if desired (usually another follows within 1 ms). If nothing is changing (i.e. no lamp levels change) the same data will be sent out over and over again. This is a great feature of DMX -- if for some reason the data is not interpreted the first time around, it will be re-sent shortly.

Not all 512 channels need to be output per packet, and in fact, it is very uncommon to find all 512 used. The fewer channels are used, the higher the "refresh" rate. It is possible to get DMX refreshes at around 1000 times per second if only 24 channels are being transmitted. If all 512 channels are being transmitted, the refresh rate is around 44 times per second.

In summary, since its design and evolution in the 1980's DMX has become the standard for lighting control. It is flexible, robust, and scalable, and its ability to control everything from dimmer packs to moving lights to foggers to lasers makes it an indispensable tool for any lighting designer or lighting performer.

Keeping Your ProPar Seven.6™ As Good As New

The fixture you've received is a rugged, tough piece of pro lighting equipment, and as long as you take care of it, it will take care of you. That said, like anything, you'll need to take care of it if you want it to operate as designed. You should absolutely keep the fixture clean, especially if you are using it in an environment with a lot of dust, fog, haze, wild animals, wild teenagers or spilled drinks.

Cleaning the optics routinely with a suitable glass cleaner will greatly improve the quality of light output. Keeping the fans free of dust and debris will keep the fixture running cool and prevent damage from overheating.

In transit, keep the fixtures in cases. You wouldn't throw a prized guitar, drumset, or other piece of expensive gear into a gear trailer without a case, and similarly, you shouldn't even think about doing it with your shiny new light fixtures.

Common sense and taking care of your fixtures will be the single biggest thing you can do to keep them running at peak performance and let you worry about designing a great light show, putting on a great concert, or maximizing your client's satisfaction and "wow factor." That's what it's all about, after all!

Returns (Gasp!)

We've taken a lot of precautions to make sure you never even have to worry about sending a defective unit back, or sending a unit in for service. But, like any complex piece of equipment designed and built by humans, once in a while, something doesn't go as planned. If you find yourself with a fixture that isn't behaving like a good little fixture should, you'll need to obtain a Return Authorization (RA).

Don't worry, this is easy. Just go to our website and open a support ticket at www.blizzardlighting.com/tickets, and we'll issue you an RA. Then, you'll need to send the unit to us using a trackable, pre-paid freight method. We suggest using USPS Priority or UPS. Make sure you carefully pack the fixture for transit, and whenever possible, use the original box & packing for shipping.

When returning your fixture for service, be sure to include the following:

- 1.) Your contact information (Name, Address, Phone Number, Email address).
- 2.) The RA# issued to you
- 3.) A brief description of the problem/symptoms.

We will, at our discretion, repair or replace the fixture. Please remember that any shipping damage which occurs in transit to us is the customer's responsibility, so pack it well!

Shipping Issues

Damage incurred in shipping is the responsibility of the shipper, and must be reported to the carrier immediately upon receipt of the items. Claims must be made within seven (7) days of receipt.

Tech Specs!

Weight & Dimensions								
Width	8.3 inches (21.1 cm)							
Depth	5.4 inches (13.7 cm)							
Height	7.6 inches (19.3 cm), 9.25 inches (23.5 cm) including bracket height							
Weight	4.4 pounds (2 kg)							
Power								
Operating Voltage	AC 90V-240V/50-60Hz							
Power Consumption	67W, .84A, pf: .67							
Light Source								
LED	7x 15W 6-in-1 LEDs 100,000 hours.							
Optical								
Beam Angle	25 degree							
Luminous Intensity	Lux/m	Red	Green	Blue	Amber	White	UV	ALL
	1m	1,000	1,361	1,259	671	2,070	327	4,580
	2m	305	355	356	188	590	95	1,240
Thermal								
Max. Operating Temp.	104 degrees F (40 degrees C) ambient							
Control								
Protocol	USITT DMX-512							
DMX Channels	6 / 7 / 8 / 11							
Input	3-pin XLR Male							
Output	3-pin XLR Female							
Other Operating Modes	Standalone, Master/Slave, Color Preset							
Other Information								
Have a great day. (Note: does not apply to my enemies).								
Warranty	2-year limited warranty, does not cover mal-function caused by damage to LED's.							

This page intentionally left blank.



**Enjoy your product!
Our sincerest thanks for your purchase!
--The team @ Blizzard Lighting**