

Quick Setup Guide

Speco Technologies DxVS Series DVRs

Please go to www.specotech.com/software-updates.html for the latest software



Congratulations on purchasing your new VS DVR.

We hope that this Quick Setup Guide will help you quickly setup and configure your new Speco Technologies DVR.

Thank you!

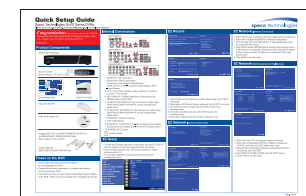
Product Components

DVR Unit (VS Series)



Remote Control

Remote Battery 1.5V (AAA x 2EA)



Quick Setup Guide



Quick User Guide

Mouse



Software & Manual CD



Adaptor (DC12V 3A for D4VS, DC12V 5A for D8VS/D16VS)& Power cable (110V or 220V)



Audio Cable for (D8VS/D16VS)

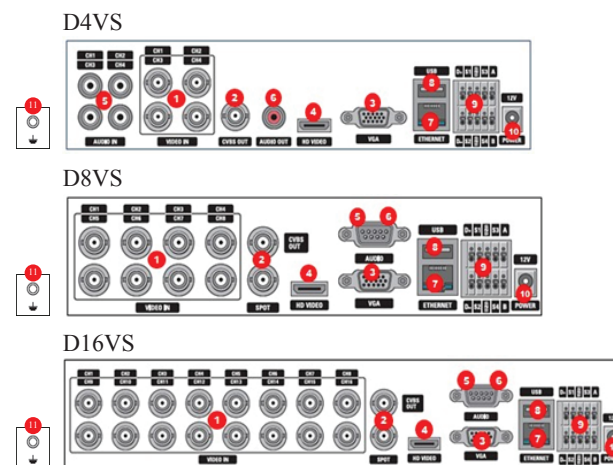


DIDO Terminal Block 1ea

Power on the DVR

- Please follow the proper power on procedures to avoid damaging the DVR.
- Connect all necessary components, e.g. monitor and cameras, before powering the DVR.
- Check the type of power source before connecting the power adaptor to the DVR. Only use the power supply that is included with the unit.

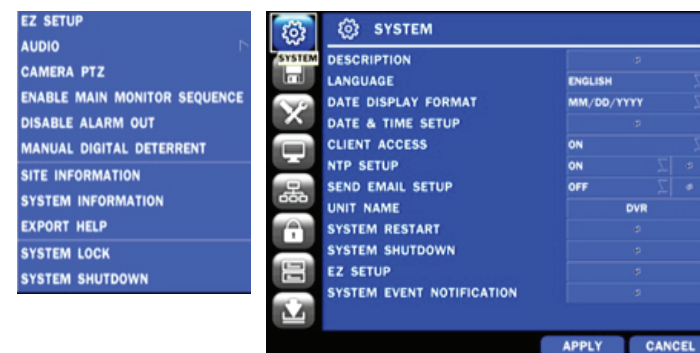
Internal Connections



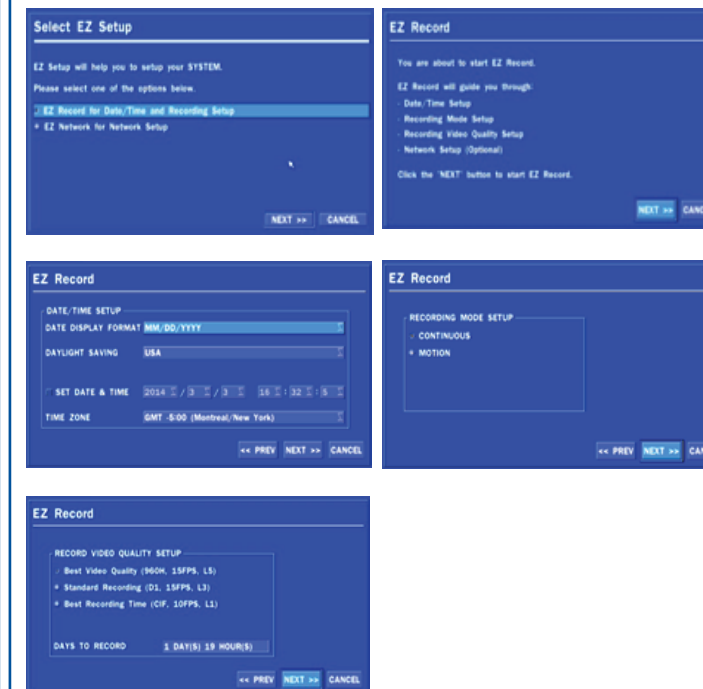
1. VIDEO IN: Video input port.
2. VIDEO OUT: D4VS: Switchable (Composite Video Output or Spot Monitor)
D8VS, D16VS: CVBS – Composite Video Output / SPOT – Spot Monitor
3. VGA: VGA (Video Graphics Array) output port. Connects to the PC VGA monitor.
4. HD VIDEO OUT: HDMI output port. Connections to the HDMI monitor (1920x1080).
5. AUDIO IN: D4VS: Four connectors for audio input.
D8VS/D16VS: Use the included audio splitter cable
6. AUDIO OUT: D4VS: One connector for audio output.
D8VS/D16VS: Use the included audio splitter cable.
7. ETHERNET: Network terminal
8. USB: USB terminal
9. SENSOR IN, ALARM OUT, RS-485: External sensor terminal, External alarm out terminal & RS-485 for PTZ Camera control
10. POWER: DC12V input
11. GROUND: Use for ground port.

EZ Setup

- To start the EZ Setup, right click on the mouse and select EZ SETUP from the submenu or the main menu button the main menu.
- Enter username and password. The default username is admin and password is 1111.
- It is strongly suggested to change the password to prevent unauthorized access.

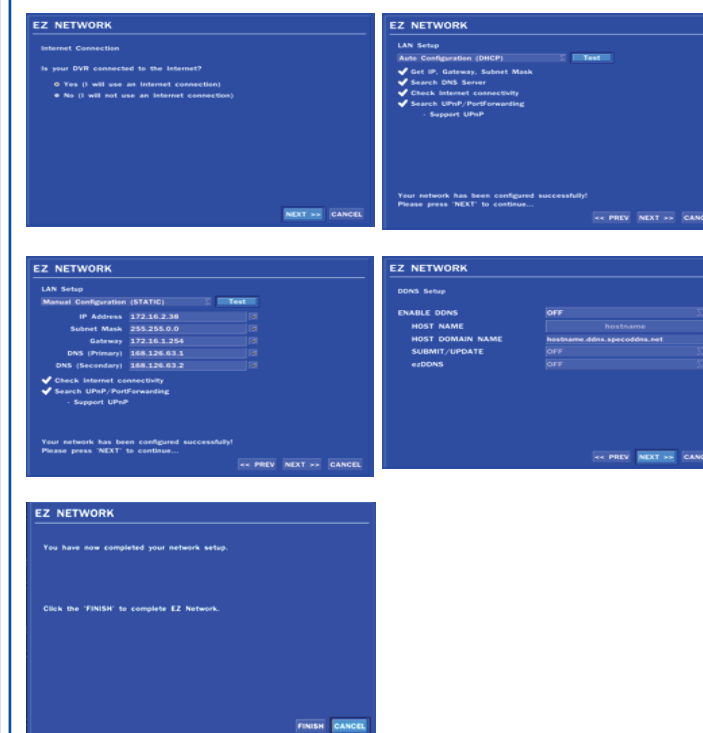


EZ Record



1. Select EZ Record for Date/Time and Recording Setup, Click NEXT to proceed.
2. Description of EZ Record Setup is displayed, Click NEXT to proceed.
3. Set up the Date/Time settings and click NEXT to get to the recording setup.
4. Select the recording mode and click NEXT to get to the recording setup.
5. Select one of options and click NEXT to finish the setup.

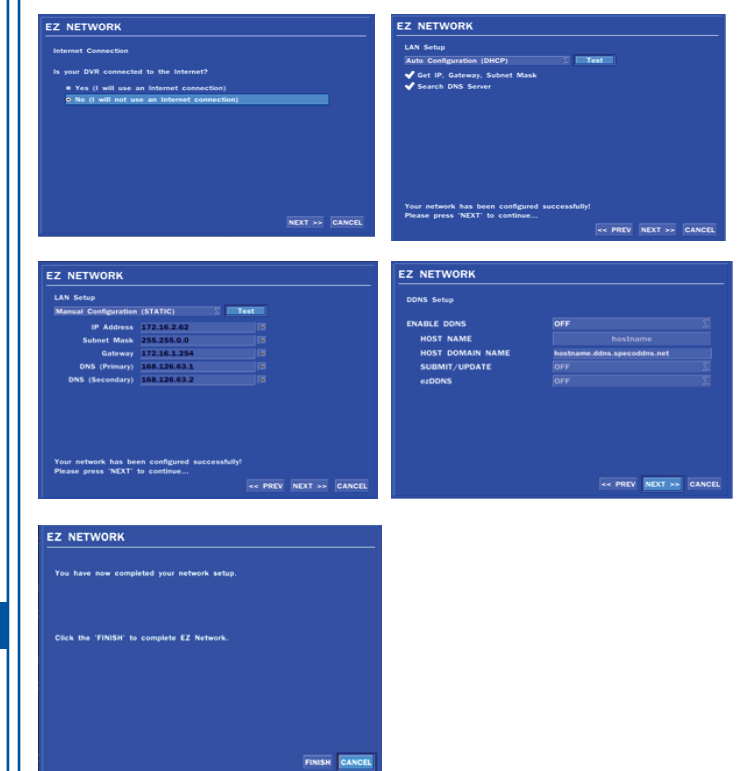
EZ Network (Internet Connected)



EZ Network (Internet Connected)

1. Select YES in case of setting the network using an internet connection.
2. Select Auto Configuration(DHCP) or Manual Configuration (STATIC) and then click TEST Button. It will automatically setup the network for the system.
3. Setup DDNS setting. DDNS(Dynamic Domain Name System) allows a DNS name to be constantly synchronized with a dynamic IP address. It allows using a dynamic IP address to be associated with a static domain name.
4. Click Finish to save the setup

EZ Network (Not Connected to the Internet)



1. Select NO if the VS is not using an internet connection.
2. Select Auto Configuration(DHCP) or Manual Configuration (STATIC) and then click TEST button when ready.
3. Input the Network Settings if Manual Configuration(STATIC) was selected, and click TEST
4. Select OFF for ENABLE DDNS and click NEXT button.
5. Click Finish to save the setup.

Quick Setup Guide

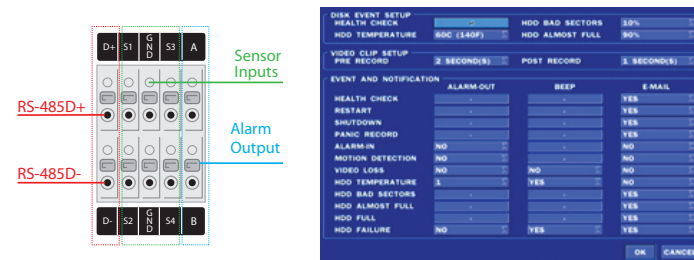
Speco Technologies DxVS Series DVRs

Recording Setup

- To setup a recording schedule, select SCHEDULE in the RECORD menu. Navigate through the items using the mouse or the control button.
- Select CHANNEL > select NONE, CONTINUOUS, MOTION or SENSOR > HIGHLIGHT AREA.
- To copy a schedule to a different channel, select the channel from the COPY SCHEDULE menu.



Pin Definition of Alarm I/O & RS-485



Alarm I/O Setup

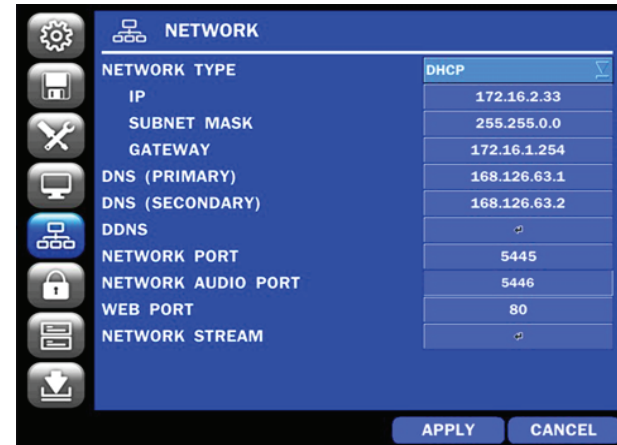
- In the SETUP menu, select the SYSTEM tab and click on SYSTEM EVENT NOTIFICATION.
- Set the sensor, motion, and video loss for triggering alarm relay output.
- HDD Error and Video Loss can also trigger beeping.

PTZ Camera Setup

- Connect the RS-485 cables of PTZ camera to the RS-485 port on the rear panel
- In the SETUP menu, select the DEVICE tab and click on CONTROLLER & PTZ.
- Set the channel, name, speed and ID on the PTZ setup screen.
- Right click on the PTZ channel and click on PTZ from the Sub Menu.



Network Setup



- Select the NETWORK tab.
- For DHCP, set the Network Type for DHCP and exit to the menu. The IP address, Subnet Mask, Gateway and DNS settings are retrieved from network servers. DHCP is dynamic and the settings will change from time to time.
 - For Static, set the Network Type to Static. Enter the IP address, Subnet Mask, Gateway and DNS. Obtain this information from the network service provider.
 - The Client Access must be ON for the DVR to be accessed remotely.
 - Enable DDNS for free DDNS name server.

Connect the DVR via Web-Browser Viewer

- Setup Requirements
- Make sure PC is connected to the Internet.
 - Make sure DVR is already setup following the Network Setup steps.
- Internet Settings
- Start Internet Explorer; go to 'Tools' → 'Internet Options' → 'Security' tab.
 - Select 'Trusted sites' and click 'Sites' to specify its security setting.
 - Uncheck "Require server verification (https for all sites in this zone)". Enter the IP address of the DVR in this field and click 'Add' to add this website to the zone
 - In the Security Level area, click 'Custom Level'. Under 'ActiveX controls and plug-ins', set all items to 'Enable' or 'Prompt'.
 - Click 'OK' to accept the settings and close the 'Security Settings' screen.

Obtain Network Information of the DVR



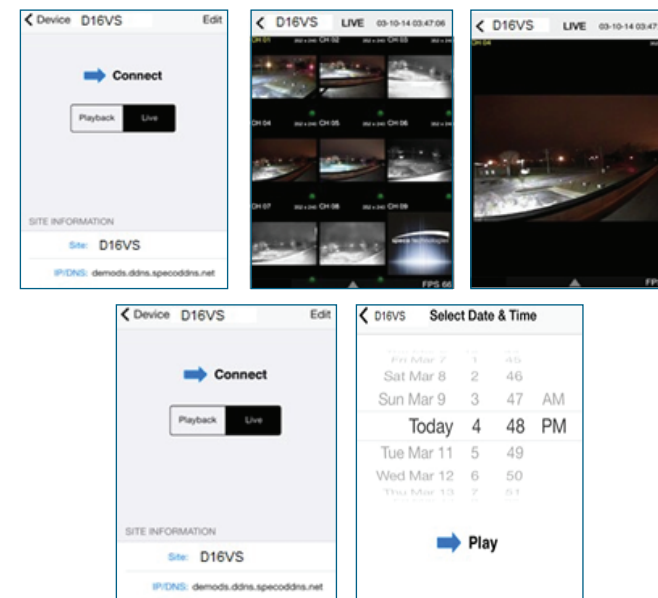
Connect the DVR via Web-Browser Viewer continued

- Obtain IP address from System Information from the Sub Menu.
- In the SETUP menu, select the SYSTEM tab and enable CLIENT ACCESS.
- In the SETUP menu, select the NETWORK tab and click on NETWORK PORT. Obtain the network and web port number.
- Start Internet Explorer and enter the IP address and port of the DVR. - For example: http:// [ip address] : [port] → http://172.16.2.62:80
- The ActiveX controls and plug-ins dialog will be prompted for installation.
- Install the plug-ins.
- Click on 'Connect' and enter the username and password of the DVR. - The default usernames and passwords are admin / 1111 and user 1 / 1111.

Mobile View Software

The VS provides mobile surveillance software for both the iPhone and the Android™.

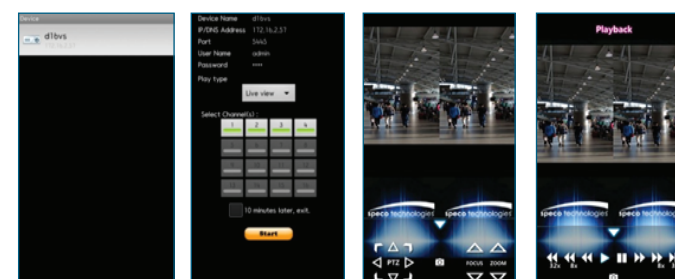
iPhone®



- Select the ADD menu and enter site information. Click ADD to save the site information.
- Select the saved site from "Devices".
- Select a channel(s) to view.
- Select Playback/Live then click CONNECT.

Android™

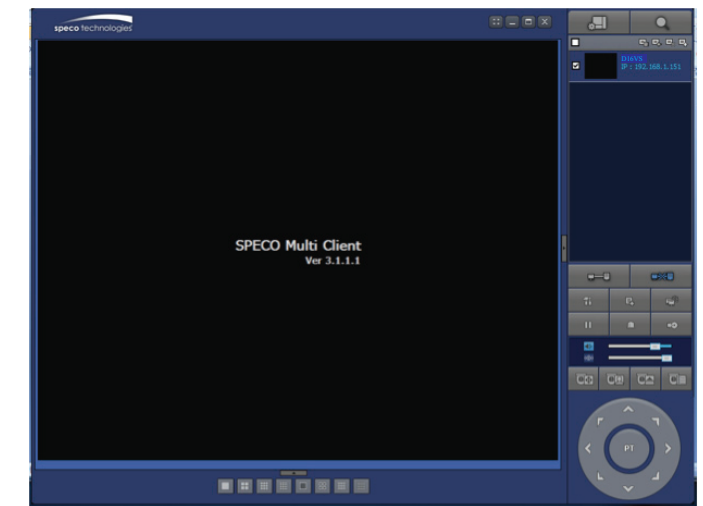
- Search for 'Speco Player' in the Android Play Store and install the app.



Mobile View Software continued

- Select the ADD menu and enter site information. Click ADD to save the site information.
- Select the saved site from "Devices" for network connection.
- Select a channel and select Live view or Playback.
- Click START button

Connect the DVR via SpecoTech Multi-Client Viewer Software



SpecoTech Multi-Client Viewer Software is a multiple site monitoring client software that allows streaming of video and audio, and transmission of alarm signals from the DVRs over the network. The SpecoTech Multi-Client can display up to 16 DVRs and supports dual monitors.

PTZ camera control is also supported by this software. By attaching a microphone and speaker system to devices on site, the user may make bi-directional audio communication over the network. Refer to the complete manual for more information.

The SpecoTech Multi-Client Viewer Software and manual are included on the CD.