

# PowerLite® 1985WU Wireless WUXGA 3LCD Projector



Wirelessly stream Full HD content from your PC, laptop, smartphone or tablet.

**3x Brighter Colors<sup>1</sup>, and reliable performance** — 3LCD, 3-chip technology

**One measurement of brightness is not enough** — look for both high color brightness and high white brightness. The PowerLite 1985WU has:

**Color Brightness** — 4800 lumens<sup>2</sup>

**White Brightness** — 4800 lumens<sup>2</sup>

**Brilliant widescreen images up to 300"** — native WUXGA (1920 x 1200) resolution, Full HD 1080p support and DCDi® video processing; also features a 1.6x optical zoom

**Stream content from your smartphone or tablet** — full mirroring capabilities from your mobile device via MHL®; or, wirelessly using Miracast® or WiDi

**2x HDMI™ connectivity** — for high-definition video and audio

**Split Screen** — simultaneously project two images, video or still, side by side, from two different sources<sup>3</sup>

**Remote network monitoring and control** — plus Message Broadcasting and built-in schedule functions



## Wirelessly stream Full HD content from your PC, laptop, smartphone or tablet.

The PowerLite 1985WU is a portable powerhouse, bringing brilliant high-definition video to your boardroom with native WUXGA, Full HD 1080p support, and DCDi video processing. Offering 3x Brighter Colors<sup>1</sup> than competitive models, Epson® 3LCD projectors ensure vivid images. With 4800 lumens of color brightness and 4800 lumens of white brightness<sup>2</sup>, the 1985WU shines bright. Easily display content from MHL-enabled devices. Or, wirelessly share content via Miracast or WiDi from smartphones, tablets and PCs. With the PowerLite 1985WU, it will look as good on the screen as it does on your device, but up to 300".

### Series at a glance



Model	PowerLite 1975W	PowerLite 1985WU
Color Brightness	5000 lumens <sup>2</sup>	4800 lumens <sup>2</sup>
White Brightness	5000 lumens <sup>2</sup>	4800 lumens <sup>2</sup>
Resolution	WXGA (1280 x 800)	WUXGA (1920 x 1200) Full HD
Wireless	Yes	Yes

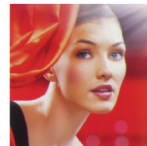
## Amazing image quality



### 3x Brighter Colors with Epson<sup>1</sup>

Brilliant image quality requires high color brightness (color light output), and Epson 3LCD projectors have 3x Brighter Colors than leading competitive projectors<sup>1</sup>.

One brightness measurement (lumens) is not enough. A projector's specification needs to show both high color brightness and high white brightness. If color brightness is lower than white brightness, images may be dark, dull and lose detail. If not provided, be sure to ask for a projector's color brightness specification.



#### EPSON

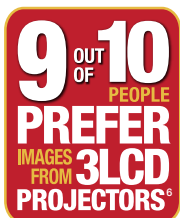
High color brightness and high white brightness



#### COMPETITOR

Color brightness significantly lower than white brightness

Actual photographs of projected images from an identical signal source. Price, resolution and white brightness are similar for both projectors (Epson 3LCD and 1-chip DLP competitor). Both projectors are set to their brightest mode.



### 3LCD, the #1 projection technology in the world, has:

- Both high color brightness and high white brightness
- 3 chips for up to 3x Brighter Colors<sup>4</sup> than 1-chip DLP projectors
- 25% lower power consumption for lower energy costs<sup>5</sup>
- 25 years of road-tested reliability
- A nationwide study reveals that 9 out of 10 people prefer images from 3LCD projectors<sup>6</sup>



## Easy to use



Without horizontal image correction



With horizontal image correction

### Simple Setup Suite from Epson

Epson projectors offer a suite of innovative features that ensure flexible placement and fast, easy setup.

- **2x HDMI** — use with multiple high-definition A/V devices. (Compatible with the latest laptops, Blu-ray Disc® and media players)
- **USB Plug 'n Play instant setup** — use a USB cable (not included) to instantly project content. View your projected presentation on the screen and your computer simultaneously
- **1.6x optical zoom** — offers great positioning flexibility to fit large or small rooms
- **Quick, convenient control**
  - Instant Off® — quickly power down the projector, pack up and go
  - Sleep Mode (A/V Mute) — pause your presentation without turning the projector off
  - Direct Power Off/On — control your projector with the flip of a switch

## Easy to connect and collaborate



### Advanced connectivity to a variety of devices

Stream 1080p content and mirror your mobile device.

- **MHL** — the latest in connectivity
  - Display content with MHL-enabled smartphones, tablets and Roku® devices<sup>7</sup>
  - Use the projector remote to control MHL-enabled devices
  - Charge your MHL-enabled device when it's plugged into the projector
  - Get instant access to movies, games and more
- **Wireless projection**
  - Miracast for any smartphone, tablet or PC with an Android™ operating system
  - WiDi for Intel® devices like smartphones, tablets or PCs

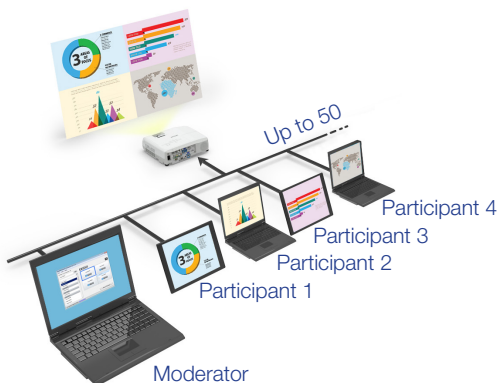
### Remote management and control

Easily monitor and control networked Epson projectors using the included EasyMP® software.

- Schedule remote power on/off functionality; saves energy, money and time
- Check the status of each projector as part of your maintenance routine
- Remotely access maintenance alerts for connected projectors
- Crestron RoomView® enabled — monitor and control your projector with your existing RoomView software

### Multi-PC Projection and Epson's Moderator feature<sup>8</sup> allows the moderator to:

- Display up to four different device screens simultaneously and control which device screens to display
- Connect to up to 50 Windows®, Mac®, iOS® or Android devices
- Encourage and control collaboration; perfect for comparing work side-by-side



## Specifications

**Projection System** 3LCD, 3-chip technology  
**Projection Method** Front/rear/ceiling mount  
**Driving Method** Poly-silicon TFT Active Matrix  
**Pixel Number** 2,304,000 dots (1920 x 1200) x 3  
**Color Brightness<sup>2</sup>** Color Light Output: 4800 lumens  
**White Brightness<sup>2</sup>** White Light Output: 4800 lumens  
**Aspect Ratio** 16:10  
**Native Resolution** 1920 x 1200 (WUXGA)  
**Supported Maximum Transferred Resolution**  
 1920 x 1080 (1080p)  
**Resize** 640 x 480, 800 x 600, 1280 x 1024, 1400 x 1050  
**Lamp Type** 280 W UHE  
**Lamp Life<sup>9</sup>**  
 Up to 4000 hours (ECO Mode)  
 Up to 3000 hours (Normal Mode)  
**Throw Ratio Range** 1.38 (Zoom:Wide), 2.28 (Zoom:Tele)  
**Size (projected distance)**  
 50" – 300" (1.46 – 8.95 m) (Zoom:Wide)  
**Keystone Correction (Automatic)**  
 Vertical: ± 30 degrees  
 Horizontal: ± 20 degrees  
**USB Plug 'n Play** Projector is compatible with PC and Mac computers  
**Contrast Ratio** Up to 10,000:1  
**Color Reproduction** Up to 1 billion colors

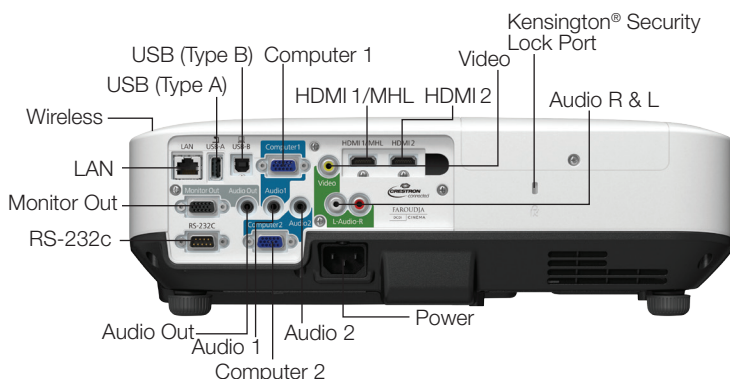
## Projection Lens

**Type** Optical Zoom (Manual) / Focus (Manual)  
**F-number** 1.5 – 2  
**Focal Length** 23 – 38.4 mm  
**Zoom Ratio** 1 – 1.6

## Other

**Display Performance** NTSC: 480 lines, PAL: 576 lines  
 (Depends on observation of the multi-burst pattern)  
**Input Signal** NTSC/NTSC4.43/PAL/M-PAL/N-PAL/  
 PAL60/SECAM  
**Speaker** 16 W (mono)  
**Operating Temperature** 41 ° to 95 °F (5 ° to 35 °C)  
**Power Supply Voltage** 100 – 240 V AC ±10%, 50/60 Hz  
**Power Consumption**  
 435 W (Normal Mode)  
 330 W (ECO Mode)  
 3.5 W Standby (Communication On)  
 0.21 W Standby (Communication Off)  
**Fan Noise**  
 39 dB (Normal Mode)  
 31 dB (ECO Mode)  
**Security** Kensington- style lock provision

## Interfaces



## Dimensions (W x D x H)

**Including feet** 14.8" x 11.4" x 4.9"  
**Excluding feet** 14.8" x 11.4" x 4.3"  
**Weight** 10.2 lb (4.6 kg)

## Remote Control

**Features** Brightness, contrast, tint, saturation, sharpness, input signal, sync, tracking, position, color temperature, volume  
**Operating Angle**  
 Right/left: ± 45 degrees  
 Upper/lower: +45 to -15 degrees  
**Operating Distance** 26.2 ft (8 m)

## Eco Features

**RoHS compliant**  
 Recyclable product<sup>10</sup>  
 Epson America, Inc. is a SmartWay<sup>SM</sup> Transport Partner<sup>11</sup>

## Support

### The Epson Connection<sup>SM</sup>

Pre-sales support  
 (U.S. and Canada): 800-463-7766  
 Internet website: [www.epson.com](http://www.epson.com)

**Service Programs** Two-year projector limited warranty, Epson Road Service program, PrivateLine<sup>®</sup> dedicated toll-free support and 90-day lamp limited warranty

## What's in the Box

PowerLite 1985WU Projector, remote control, batteries, power cable, computer cable (VGA), CD with User Guide Link, warranty card, Quick Setup Sheet

## Ordering Information

### Product Name

PowerLite 1985WU projector

### Product Code

V11H619020

### Accessories

Replacement Lamp (ELPLP77)  
 Replacement Filter (ELPAF41)  
 Wireless LAN module (ELPAP07)  
 Quick Connect wireless key (ELPAP09)  
 Soft carrying case (ELPKS68)

### Product Code

V13H010L77  
 V13H134A41  
 V12H418P12  
 V12H005M09  
 V12H001K68

- 1 Compared to leading 1-chip DLP business and education projectors based on NPD data, July 2011 through June 2012. Color brightness (color light output) measured in accordance with IDMS 15.4. Color brightness will vary depending on usage conditions.
- 2 Color brightness (color light output) and white brightness (white light output) will vary depending on usage conditions. Color light output measured in accordance with IDMS 15.4; white light output measured in accordance with ISO 21118.
- 3 Consult your user manual for input combinations.
- 4 Compared to leading 1-chip DLP projectors based on NPD data, July 2011 through June 2012. Color Brightness (color light output) measured in accordance with IDMS 15.4. Color Brightness will vary depending on usage conditions.
- 5 Data source: ProjectorCentral.com Jan. 2014. Average of 1243 shipping models for which the manufacturers provided lumens and total power data, all resolutions and brightness levels. Energy efficiency was measured as wattage per lumen. It was measured for both 3LCD and 1-chip projectors in each of six brightness segments. 3LCD projectors averaged less required electricity per lumen in each of the six segments.
- 6 9 out of 10 preferred images from leading 3LCD projectors over leading 1-chip DLP business and education projectors. Leading projectors selected according to NPD data as of July 2013. Based on independent U.S. research conducted by Radius Research (July 2013).
- 7 Roku Streaming Stick<sup>™</sup> allows you to watch content from popular Internet streaming services. Roku's Streaming Stick only available in the U.S.
- 8 Moderator feature is part of EasyMP Multi-PC Projection software.
- 9 Lamp life will vary depending upon mode selected, environmental conditions and usage. Lamp brightness decreases over time.
- 10 For convenient and reasonable recycling options, visit [www.epson.com/recycle](http://www.epson.com/recycle)
- 11 SmartWay is an innovative partnership of the U.S. Environmental Protection Agency that reduces greenhouse gases and other air pollutants and improves fuel efficiency.

Better Products for a Better Future<sup>™</sup>  
[eco.epson.com](http://eco.epson.com)



EPSON, EasyMP, Instant Off and PowerLite are registered trademarks, EPSON Exceed Your Vision is a registered logomark and Better Products for a Better Future is a trademark of Seiko Epson Corporation. PrivateLine is a registered trademark. Built to Perform is a trademark and Epson Connection is a service mark of Epson America, Inc. Mac is a trademark of Apple Inc., registered in the U.S. and other countries. Android is a trademark of Google Inc. Miracast is a registered trademark of the Wi-Fi Alliance. SmartWay is a service mark of the U.S. Environmental Protection Agency. All other product and brand names are trademarks and/or registered trademarks of their respective companies. Epson disclaims any and all rights in these marks. Copyright 2014 Epson America, Inc. Com-SS-Oct-13 CPD-41436 6/14

Epson America, Inc.  
 3840 Kilroy Airport Way, Long Beach, CA 90806

Epson Canada Limited  
 185 Renfrew Drive, Markham, Ontario L3R 6G3

[www.epson.com](http://www.epson.com)  
[www.epson.ca](http://www.epson.ca)