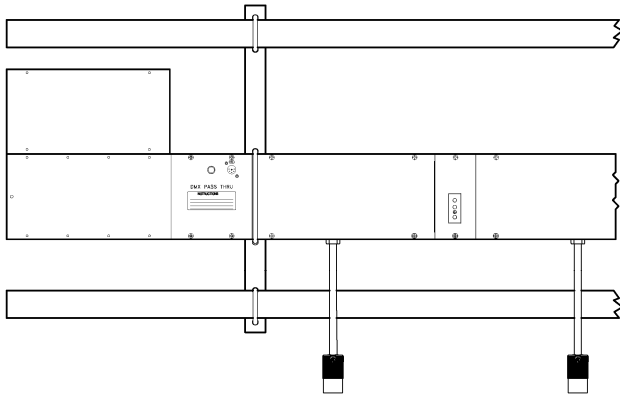


POWER DISTRIBUTION

Catalog Number

450*CUS



Fixture Type:

Altman Lighting's 450 Series Connector Strips feature rugged steel construction, innovative data distribution, and a wide array of available connector types and hanging hardware. Each Connector Strip is custom built for the specifications of the project.

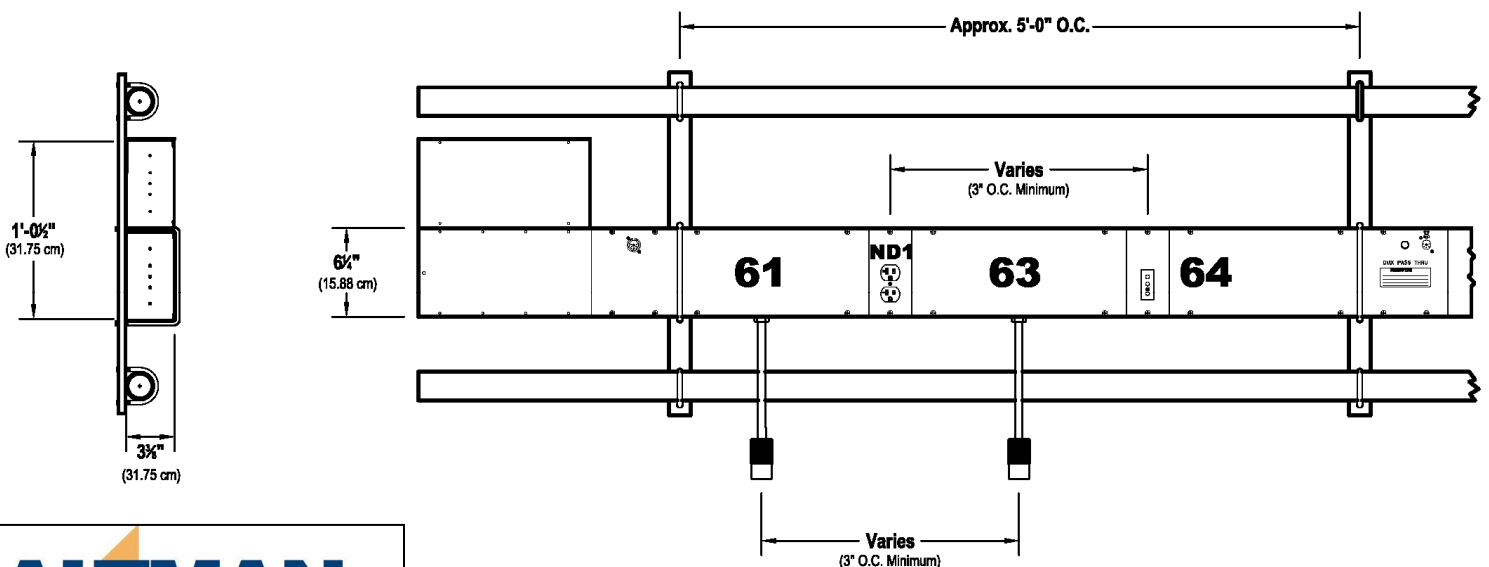
Pigtail and flush mount load connectors are prewired to spring loaded terminals at the feed end of the strip. Connector Strips are available with Active and Passive

DMX-512/RDM & Ethernet Data management and can be mounted horizontally or vertically, dead hung or attached to movable rigging sets. The 450 is suitable for installation in theatres, television studios, or anywhere a system of permanent circuit distribution and data distribution for conventional, LED, and automated luminaires is desired.

STEEL CONNECTOR STRIP with Optional Data Distribution

Features:

- Rugged 18 gauge steel construction with 14 gauge end caps and joiners. Center holes on end caps provided for conduit fittings
- A variety of flush mount and pigtail connectors are available for 20amp, 30amp, 50amp, and 50amp circuits. Individual circuits can be wired to multiple pigtails or receptacles.
- Active or passive data management for distribution of DMX-512A/ RDM to distributed dimmers, automated fixtures, and LED Luminaires.
- Optional per circuit indicator lamps available.
- Easy to ship, assemble, and service.
- DIN Rail mounted screwless spring terminals for termination of 20amp loads (up to #8 AWG). Screw terminals for 30amp, 50amp, and 100amp wiring.
- DIN Rail mounted control box for integration of DMX-512A/ RDM Opto Splitters, Ethernet nodes, and other DIN rail mounted control devices.
- Standard 2" high white vinyl numbers for circuit identification on one side. Numbering on both sides, custom vinyl colors, and lamicoïd circuit identification plates are available.
- 1-Tool Assembly (#2 Phillips Screwdriver)
- ETL & cETL pending for Indoor use
- Made in the USA



Steel Connector Strip w/Data Specifications:

General:

- Available in standard and custom lengths. Connector Strips over 6' come folded in sections, packaged for quick assembly.
- Active and Passive Data Management available for DMX-512A/RDM and Ethernet control signals.
- Flat Black Finish. Custom colors are available
- Standard 2" high white vinyl numbers for circuit identification on one side. Numbering on both sides, custom vinyl colors, and lamicoïd circuit identification plates are available.
- ETL pending for indoor dry location use

Physical:

- 18 gauge steel construction with 14 gauge end caps and joiner pieces.
- 14 Ga Electro Zinc Steel end caps and joiners
- 20 GA Electro Zinc DMX Barrier
- .125" Center holes on end caps for conduit fittings
- DMX & Flush Receptacle panels are on 3" Centers. Pigtails are on 1.5" Centers,
- All DIN Rail mounted components.

Data Management Options:

- No DMX: No data distribution and management is built into the connector strip.
- Passive DMX (non-Opto Isolated): Up to (4) individual DMX-512/RDM Data Lines can be run through the strip to Flush mounted XLR Connectors. "Pass-thru" panels are provided for multiple receptacles on a single data line.
- Active DMX: DMX-512A/RDM Data is distributed throughout the strip from a single source via Pathway eDIN Opto-Isolators mounted in the control box.
- Ethernet distribution solutions (integrated switches, Ethernet to DMX nodes, etc.) are available.
- Hardwired and optional XLR Receptacle data inputs available at control box.

Power Input:

- Circuits in the Connector Strip are prewired to a junction box, which contains DIN-rail mounted terminal strips for easy installation.
- DIN Rail mounted screwless spring terminals for termination of 20amp loads (up to #8 AWG). Screw Terminals for 30amp, 50amp, and 100amp wiring.
- Second Terminal Box added for configurations with more than (24) 20amp circuits.
- 19-Pin Socapex/ VEAM power feed connections are available.

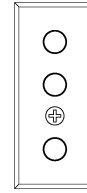
Connector Options:

- Pigtail or Flush Mount 20amp Stage Pin connectors
- Pigtail or Flush Mount "Edison" (NEMA 5-15 and 5-20 connectors)
- Pigtail or Flush Mount Twistlock (NEMA L5-15 and L5-20 connectors)
- Other connectors including L620, 19-Pin Socapex/ VEAM, 30amp, 50amp, and 100 amp connectors are available.

Power Receptacles:

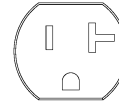
Stage Pin (GSP)

20, 50, OR 100amp Stage Pin Receptacle (20 amp shown)



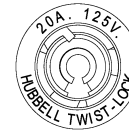
Parallel Blade (PBG)

Parallel Blade or "Edison" receptacle (NEMA 5-20) will mate with NEMA 5-15 and NEMA 5-20 Plugs.



Twistlock (GTL)

20amp Twistlock Receptacle, NEMA L-520



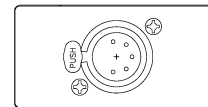
All Connectors shown here are available in either Flush mount or Pigtail configurations. Standard pigtail lengths are 18". Custom Pigtail lengths are available.

Other connector types and configurations are available. Contact Altman lighting for additional information.

Data Receptacles:

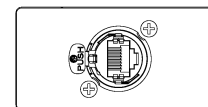
Female 5-Pin XLR (DMX)

Flush mounted female 5-Pin XLR for distribution of isolated and non-isolated DMX-512A/RDM Signals.



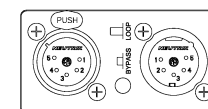
Ethercon RJ-45 (Ethernet)

Flush mounted RJ-45 connector in XLR shell for distribution of Ethernet Control signals.



DMX Pass Thru

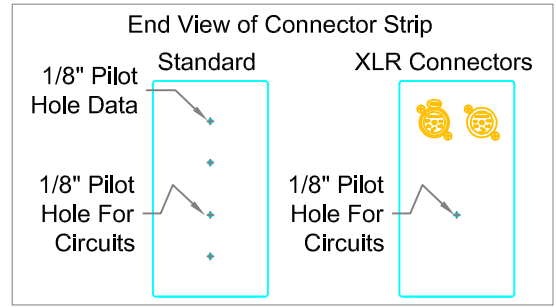
Male and Female 5-Pin XLR Receptacles with push button switch to connect (pass thru) and disconnect them.



450* CUS DMX/RDM Configurations

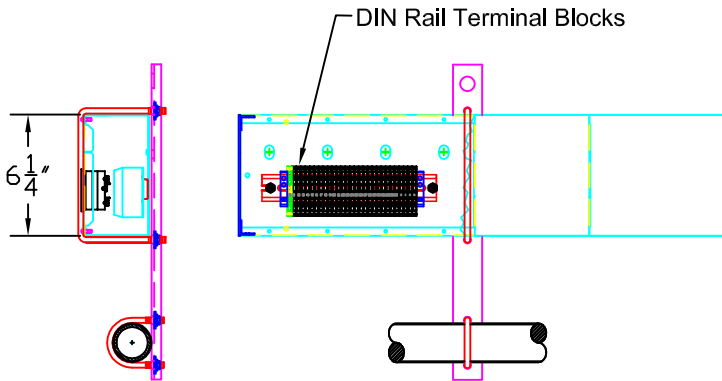
DMX/RDM options are as detailed below. Data options are No DMX, Passive DMX, and Active DMX/RDM. Passive DMX does not include opto-isolation or any other features. Active DMX/RDM include Opto-isolation of 4 ports. Additional active DMX/RDM Modules can be added in groups of 4 ports.

Data Input/Output
Connector strips are supplied standard with screw terminal blocks for data input and output to other other strips. 5 pin XLR input/output are available for an additional charge.



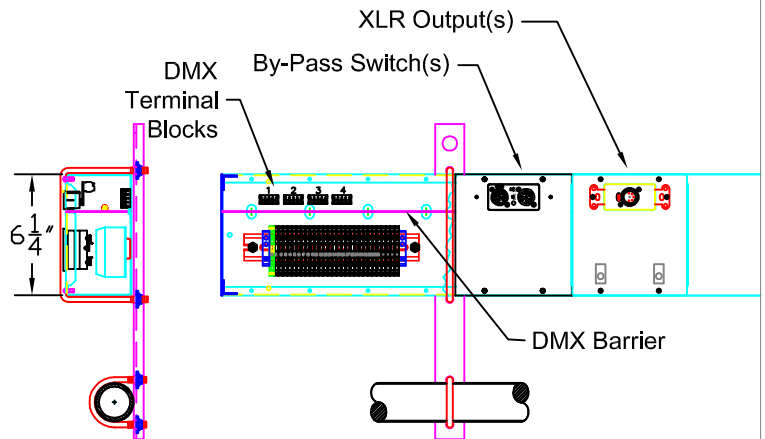
Option 1: No DMX

This option has no DMX and the DMX barrier is not installed. This option allows for greater capacity in 110V circuits.



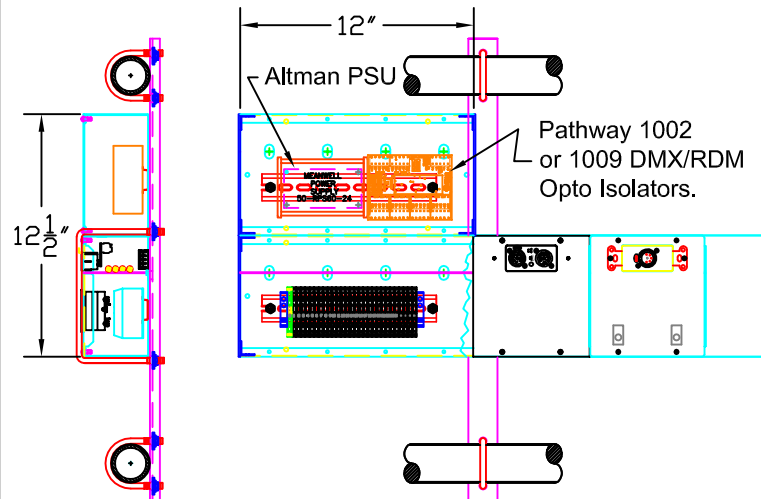
Option 2: "Passive" DMX

This option is simply DMX input via hard wire or optional XLR that is not isolated. Customer can add by-pass switches and XLR outputs as desired. Can accommodate up to 4 single non-isolated runs.



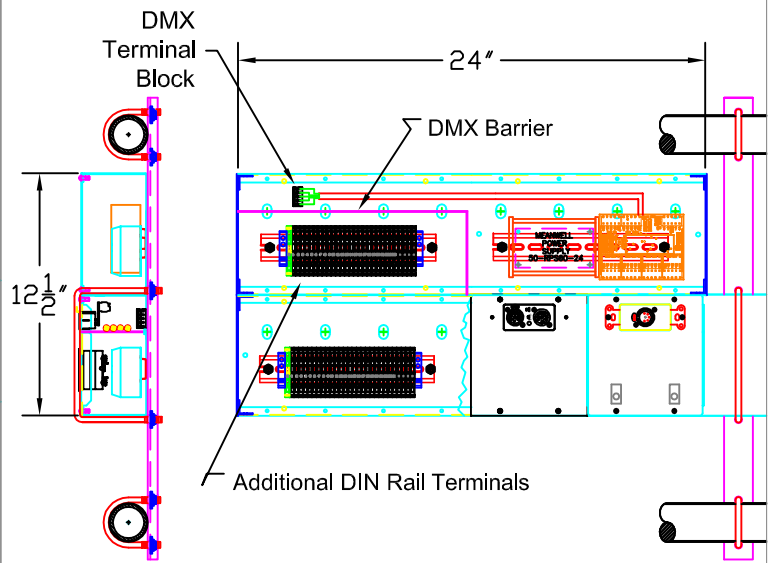
Option 3: "Active" DMX/RDM (Opto-Isolated)

This option has 4 output channels of DMX or RDM. An electronics box is required on top of connector strip. Customer can add by-pass switch(s) and XLR output(s). Requires 120V un-switched source to power electronics.



High Density Configurations

In the event that the maximum allowable circuit configuration is reached for line voltage circuits, an additional terminal box will be co-located on the top of the strip with the DMX/RDM equipment moved 12" to the right.



ALTMAN

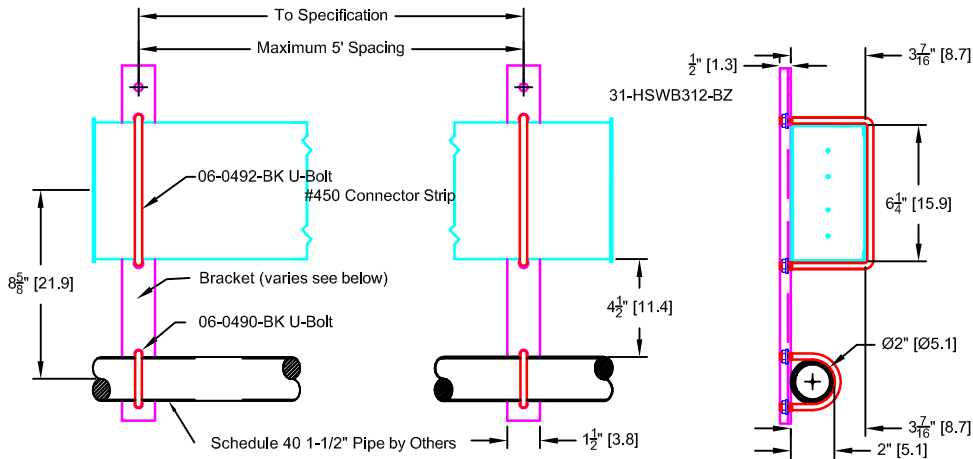
Altman Lighting Co. Inc.
57 Alexander St., Yonkers, NY, 10701
Ph: (914) 476-7987 Fax: (914) 963-7304
<http://www.altmanlighting.com>

Altman #450 Series Connector Strip Bracket Types (3-3/8" X 6-1/4" Strip)

Notes:

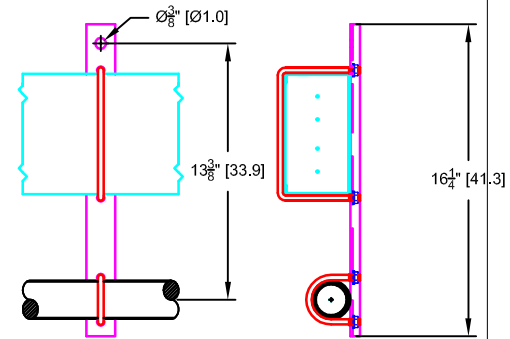
- 1) One pair of hanging brackets, plus one additional provided per every 5' in length over 10'.
 - 2) All mounting hardware is hex 5/16-18 UNC.
 - 3) Dimensions are rounded to nearest 1/16".
 - 4) Dimensions in inches [cm].
 - 5) Types 16-17 use 5/16"-18 carriage bolts.
 - 6) All iron finishes black powder paint. C-bolts & U-bolts black zinc.
 - 7) Tools to assemble: One 1/2" hex socket & ratchet.
- * Denotes standard style. Others optional.

Typical Dimensions



450-Type-11* (Single Pipe)

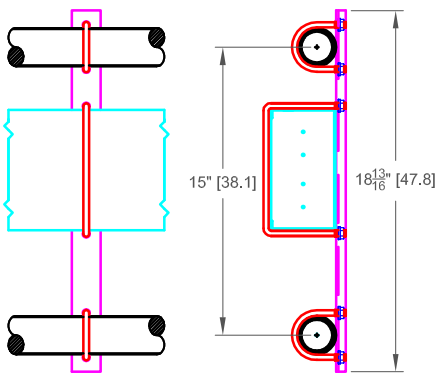
Any Style-With Or Without Terminal Box.



Bracket P/N: 05-0004-25
 Material: 1-1/2" X 1/2" X 1/8" ASTM C-Channel.

450-Type-12* (Double Pipe)

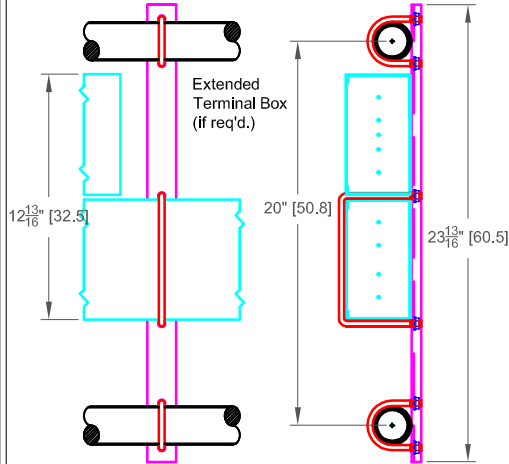
For Passive DMX And NO Terminal Box



Bracket P/N: 05-0004-35
 Material: 1-1/2" X 1/2" X 1/8" ASTM C-Channel.

450-Type-13 (Double Pipe Ext'd)

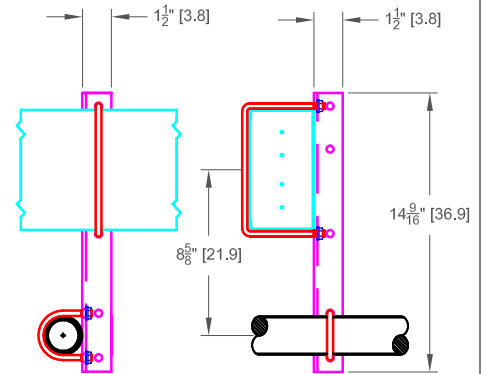
For DMXOS, RDMOS, NET AND/OR Terminal Box.



Bracket P/N: 05-0004-45
 Material: 1-1/2" X 1/2" X 1/8" ASTM C-Channel.

450-Type-14 (90° Pipe Grid)

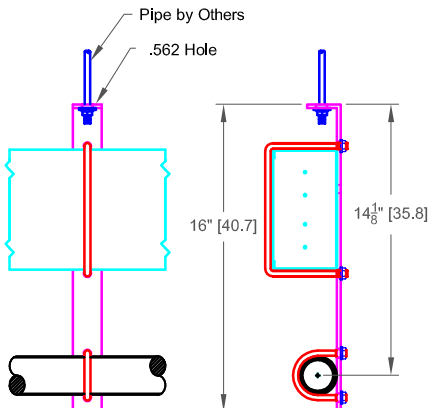
Any Style-With Or Without Terminal Box.



Bracket P/N: 05-0005-25
 Material: 1-1/2" X 1-1/2" X 3/16" ASTM Angle Iron

450-Type-15 (All Thread Bracket)

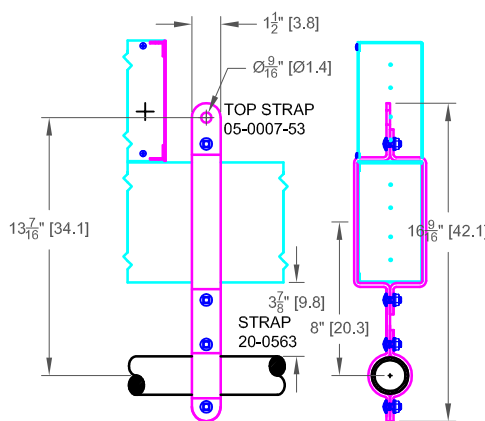
Any Style-With Or Without Terminal Box.



Bracket P/N: 05-0007-25
 Material: 1-1/2" X 3/16" ASTM Flatbar.

450-Type-16 (Single Pipe In-Line)

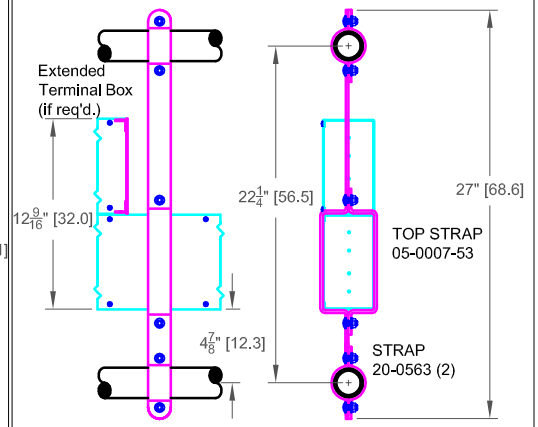
Any Style-With Or Without Terminal Box.



Bracket P/N: 05-0007-71
 Material: 1-1/2" X 3/16" ASTM Flatbar.

450-Type-17 (Double Pipe In-Line)

For DMXOS, RDMOS, NET AND/OR Terminal Box.



Bracket P/N: 05-0007-72
 Material: 1-1/2" X 3/16" ASTM Flatbar.