



AcousticCoverage™ Series

AC-C4T

Full-range, ceiling mount
loudspeaker

Features

- High quality 4" full-range transducer provides exceptional clarity through the critical voice range.
- Ported baffle for increased low frequency extension down to 70 Hz.
- Low saturation 70/100V transformers with 8 ohm bypass.
- 4 pole Euroblock connector eases system wiring.
- Advanced voicing filter sets using QSC Intrinsic Correction™ available through either Q-Sys processing or CXD amplifier platforms.
- White (RAL 9010) with UV inhibitors to match complimenting QSC product families.
- Complete EASE, CF2, CAD, & BIM information available online



Wide Area Paging · Background Music · Office Buildings · Healthcare Facilities ·
Concourses · Transportation Terminals · Ancillary Support in Larger Systems

The QSC AcousticCoverage™ AC-C4T is a ceiling-mounted 4" full-range loudspeaker with 70/100V transformer, suitable for a wide variety of voice paging and background music sound reinforcement applications.

AcousticCoverage™ is designed to offer integrators a cost-effective solution for applications where voice reinforced coverage is of primary concern, while providing improved musicality often not seen in typical BGM class products.

A high quality 4-inch polypropylene cone transducer with butyl rubber surround offers pristine clarity through the critical vocal range for increased speech intelligibility. With 140 degrees of conical coverage, the AC-C4T reduces the number of loudspeakers required for even coverage in low ceiling applications.

The easy-to-install blind mount assembly features a ported baffle which optimally tunes the galvanized steel backcan for added musicality, creating low frequency extension down to 70 Hz. To maintain this frequency response, the AC-C4T utilizes a 16 watt low-saturation and low-loss 70/100V transformer with varying selectable taps, including an 8Ω bypass. The rotary tap selector switch is accessible under the powder-coated steel grille.

To further enhance performance and speed of install with optimum result, advanced voicing filter sets using QSC Intrinsic Correction™ techniques are obtainable using Q-Sys™ networked audio processing

platforms, including CXD amplifiers for a complete QSC systems solution.

Installers will appreciate the 4 pole Euroblock connector for loop-thru wiring, located under a quick access swivel plate. Eliminating the termination hassles of star topology wiring designs, the generous Euroblock of the AC-C4T can accept four 18AWG pairs.

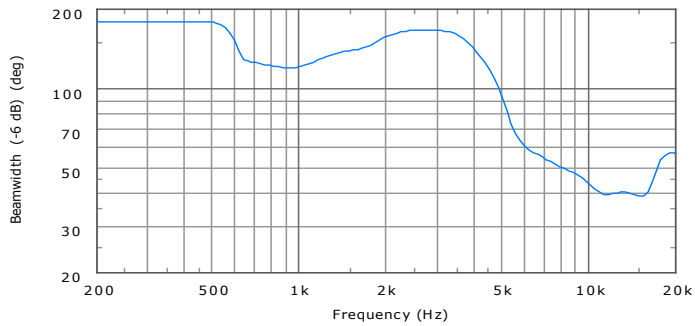
A safety tether tab is affixed to the adjustable conduit clasp plate for seismic-sensitive installations. C-ring and tile rails are included with each pair packed assembly, complete with joining screws and cut-out template.

The AC-C4T baffle and grille are QSC standard white (RAL 9010) to match complimenting QSC product families and includes UV inhibitors to prevent discoloration over time. The AC-C4T may also be painted to match any décor.

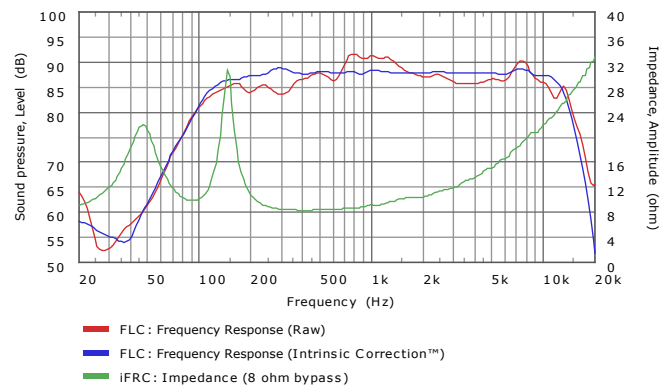
For your system integration needs, complete EASE, CF2, CAD, and BIM files are available for download at QSC.com.

AC-C4T Details

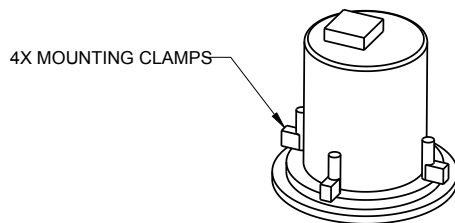
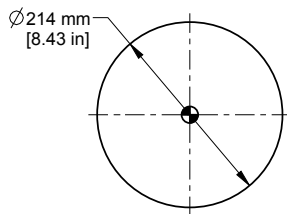
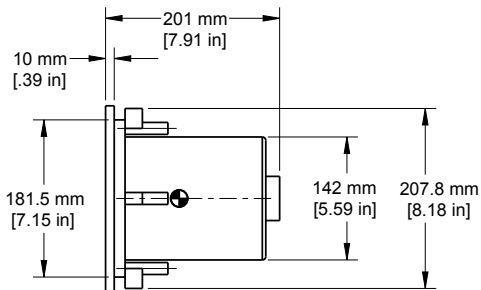
Beamwidth:



Impedance / Frequency Response:



Dimensions:



AC-C4T Specifications:

System Details	AC-C4T
Effective frequency range ¹	70 Hz – 16 kHz
Rated noise power / voltage ²	16 watts / 11.3 volts (rms)
Broad-band sensitivity ³	89 dB SPL
Coverage angle (-6 dB)	140° (500 Hz - 5 kHz)
Maximum continuous SPL ⁴	101 dB
Maximum peak SPL ⁴	107 dB
Rated impedance	8 ohms
Transformer taps	70 V: 16, 8, 4, 2, 1 watts and 8 ohm bypass 100V: 16, 8, 4, 2, watts and 8 ohm bypass
Transducer	4" Polypropylene cone with butyl rubber surround
Input connector type	Euroblock connector with parallel output terminals
Baffle material	Painted ABS polymer
Grille material	Powder coated steel
Back can material	Galvanized steel
Testing	Listed UL1480, UL2043 safe for use in air handling space
Net weight	4.9 lb / 2.22 kg
Product dimensions	Ø8.4" x 7.9" (Ø214 x 201 mm)
Cut-out Dimensions	Ø7.31" (Ø185.67 mm)
Ceiling Capture Thickness	0.25" - 1.5" (6.35 - 38.1 mm)
Shipping weight	15.1 lb / 6.86 kg
Shipping dimensions	10.75" x 24" x 10.5" (273.1 x 609.6 x 266.7 mm)
Included accessories	Rails & C-ring for ceiling tile installation

¹ Free-field, -10 dB from on-axis sensitivity ² IEC60268-1 noise signal for 2 Hrs

³ On-Axis, free-field sensitivity, 2.83V, 1 m ⁴ Calculated from rated noise voltage and sensitivity

As part of QSC's ongoing commitment to product development, specifications are subject to change without notice.

QSC™

1675 MacArthur Boulevard • Costa Mesa, CA 92626 • Ph: 800/854-4079 or 714/957-7100 • Fax: 714/754-6174

© 2014 QSC Audio Products, LLC. All rights reserved. QSC and the QSC logo are registered trademarks of QSC Audio Products, LLC in the U.S. Patent and Trademark office and other countries. AcousticCoverage, DMT, Intrinsic Correction and Q-Sys are trademarks of QSC.

AC-C4T Spec Sheet 06/23/2014



please recycle