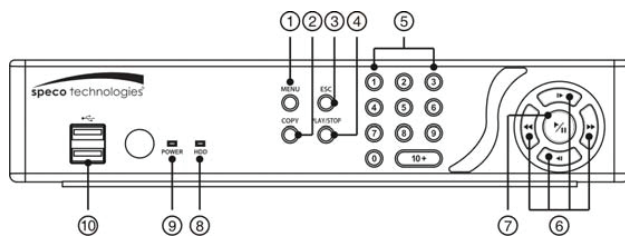


Quick Reference Guide

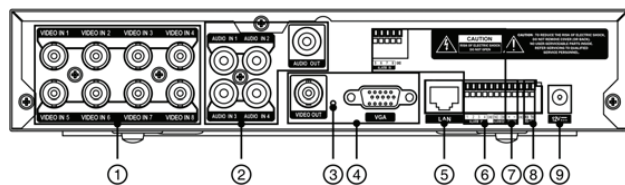
Speco Technologies D4CS, D8CS DVRs

Congratulations on purchasing your new CS DVR. We hope that this Quick Reference Guide will help you quickly setup and configure your new Speco Technologies DVR. Thank you!

Front Panel and Rear Panel

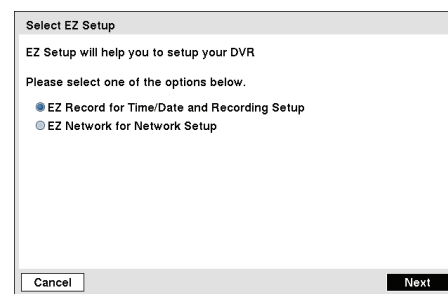


- ① Menu Button
- ② Copy Button
- ③ Esc Button
- ④ Play/Stop Button
- ⑤ Camera Buttons
- ⑥ Arrow Buttons
- ⑦ Play/Pause Button
- ⑧ HDD LED
- ⑨ Power LED
- ⑩ USB Port



- ① Video Input
- ② Audio In/Out
- ③ Factory Reset Switch
- ④ Video Out
- ⑤ Network Port
- ⑥ Alarm In/Out
- ⑦ RS485 Port
- ⑧ RS232 Port
- ⑨ Power Cord Connector

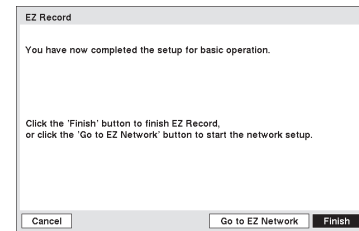
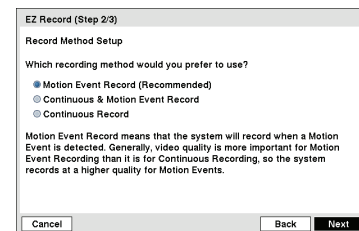
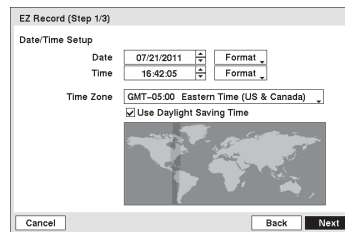
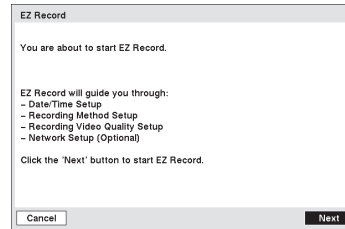
EZ Setup



- Go to <System> <EZ Setup> to display the EZ Setup screen.
NOTE: The EZ Setup screen can only be accessed when logged on as the admin user.
- Select either EZ Record or EZ Network and select the Next button to start the selected setup.
- If you selected the EZ Record, selecting the Next button starts the EZ Record.

EZ Record Setup

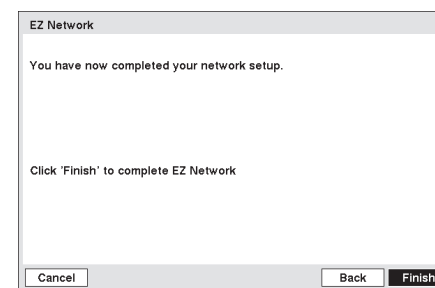
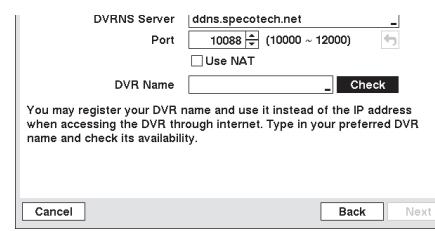
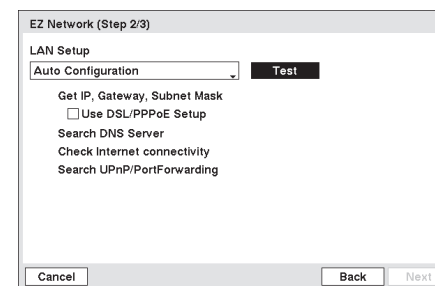
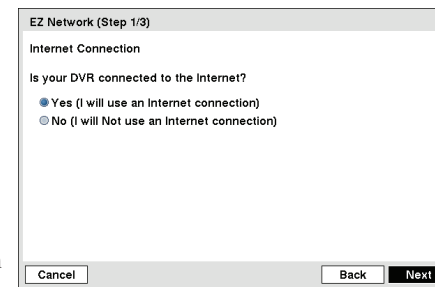
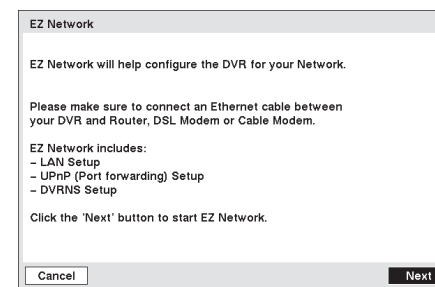
- If you selected the EZ Record, selecting the Next button starts the EZ Record.
- Set the system date/time and select the date / time format.
- Set the time zone. It can be selected on the map.
- Set the system to use daylight saving time.



- Select the desired recording mode from: Motion Event Record Continuous & Motion Event Record, and Continuous Record.
- Select the desired video quality profile from: HVQPP, SRP and LRTPP.
- Select the Finish button to finish the EZ Record and select the Go to EZ Network button to start the EZ Network.

EZ Network Setup

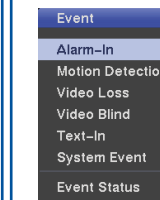
- If you selected the Go to EZ Network, select the Next button to start the EZ Network.
- Select whether or not your DVR is connected to the Internet.
- Select between Auto Configuration and Manual Configuration for network configuration.
- Select the Test button to test the network configuration you selected.



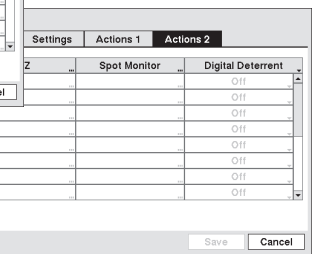
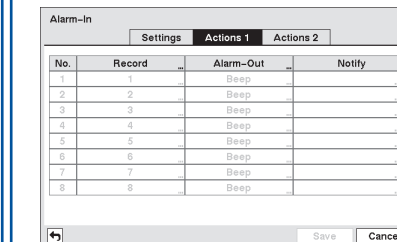
NOTE: The network configuration you set should be tested by selecting Test, otherwise the Next button cannot be selected, and you cannot move to the next step.

- Select the Use DVR Name Service box to use the DVR Name Service.
- Enter the IP address or domain name of the DVRNS server.
- Set the port number of the DVRNS server.
- Select the Use NAT box to use the NAT (Network Address Translation) device.
- Enter the DVR name to be registered on the DVRNS server.
- Select the Check box to check whether or not the name you entered can be used.
- Select the Finish button to finish the EZ Setup

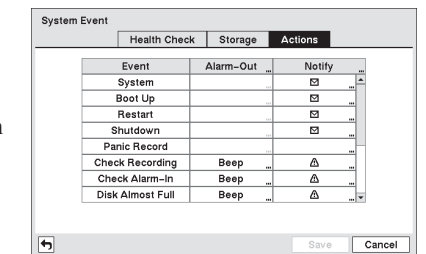
Event Action Settings



- Go to <Event> <Alarm-In, Motion Detection, Video Loss, Video Blind, Text-In> to display the Event Setting and Actions setup screens.
- In each Event Actions screen, you can set the actions (Record, Alarm-Out, Notify, PTZ, Spot Monitor and Digital Deterrent) the DVR will take whenever it senses alarm input, detects motion, loses video, detects video blind and senses text input.



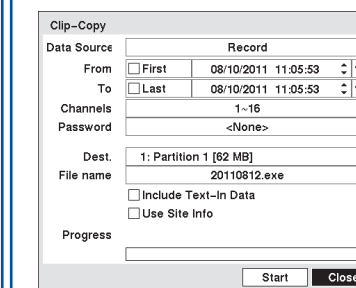
- Go to <Event> <System Event> to display the System Event setup screen.



- In the System Event Actions screen, you can set the actions (Alarm-Out and Notify) the DVR will take when it detects system events.

Clip-Copy

The Clip-Copy screen can be used to copy video to an internal DVD RW, or external USB hard disk or flash drives. The clip copy can be simply done by pressing the "Copy" button on the front panel, or selecting Clip-Copy or EZ Copy in the Search menu.



NOTE: The Clip Copy feature requires the camera title or number along with the date and time of the recorded images to be copied. To view the copied images, remove the disk from the DVD RW device and insert it into any PC with a CD or DVD reader. On the PC access the CD or DVD drive device and select the image file name. The executable Clip Player software program will open automatically displaying playback controls for viewing the video clip.

Quick Reference Guide

Speco Technologies D4CS, D8CS DVRs

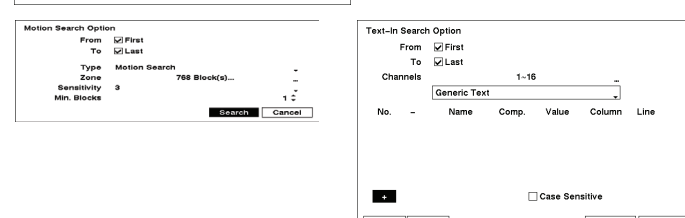
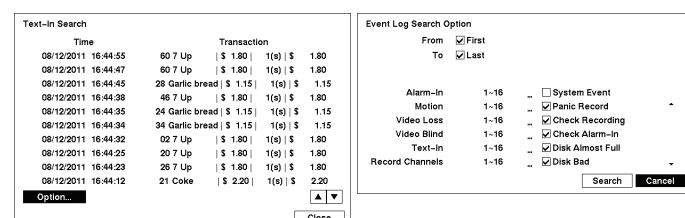
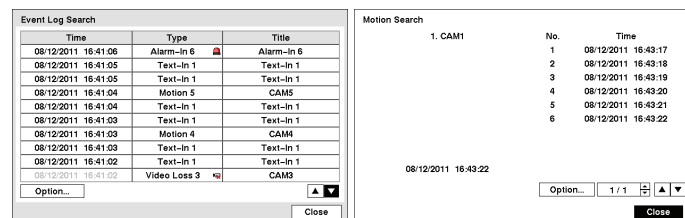
speco technologies®

Event Search

1. Go to <Search Menu> <Event Log Search, Motion Search, Text-In Search>. The event log list will be shown on the screen. Highlight the event you would like to see and press the button.

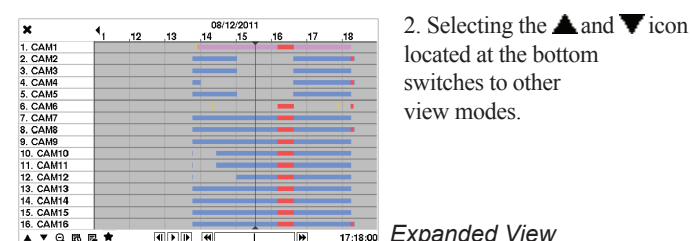
For more specific search conditions, select <Option> and enter search parameters then select <Search>. The search results will be displayed in each screen.

2. Pressing the button will start playing the "event" video segment. Press the "PLAY/STOP" button to return to live monitoring.

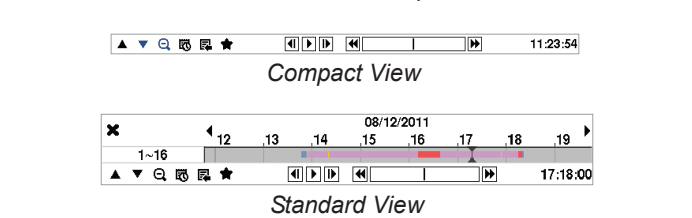


Record Table Search

1. Go to <Search Menu> <Search Record Table Search>. Recording information about video images currently displayed on the screen displays on the recording status bar.



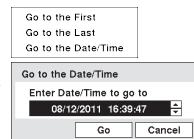
2. Selecting the and icon located at the bottom switches to other view modes.



3. Selecting displays eight hours (1-minute based), and selecting displays 24 hours (3-minute based) at once.
4. Selecting located at the bottom displays the Calendar Search screen.
5. Selecting located at the bottom displays the Search menu.

Record Setup

1. Go to <Search Menu> <Search to Go To>. Selecting <Go to the First> displays the first recorded image, selecting <Go to the Last> displays the last recorded image, and selecting <Go to the Date/Time> displays the Go to the Date/Time screen.

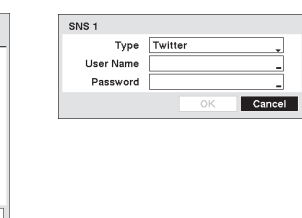
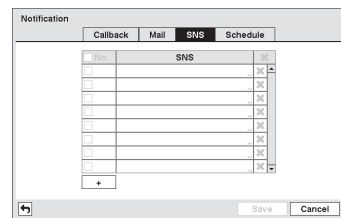


2. Enter a specific date and time and select "OK" by pressing the button. The button and arrow buttons to review the video.

SNS Notification

The DVR can be set up to post a message via SNS (Social Network Service) when an event occurs. Go to <Network> <Notification to SNS> to add and edit the SNS (Social Network Service) account. The SNS account can be turned On or Off by highlighting the boxes under the No. heading and pressing the button.

1. To add a SNS account, highlight the + and press the button.
2. Highlight the box beside Type and press the button. Select Twitter from the Type allows the DVR to post a tweet on Twitter when an event occurs.
3. Highlight the box beside User Name/Password and press the button.
4. You can add and edit notification schedules on this screen. Highlight the + and press the button to add a schedule.



System Setup

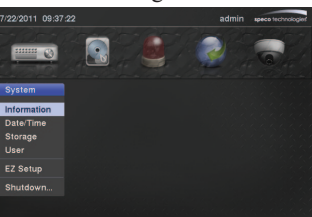
1. After connecting the power cord, unit will be operational in 60 seconds. **NOTE:** There is no record button on the unit. Please refer to the Record Setup section for the proper record settings.

2. Press the "MENU" button or move the mouse pointer to the top of the screen and then select (Setup) in the Live Monitoring menu, enter the password then press the button. There is no default password when logging in the admin user for the first time. To assure the secure management of the system, setting up a password is strongly recommended.

3. Go to <System> <Information> to name the site location, assign a System ID number, select the language the screens are displayed in, display software version number, upgrade the software, show the System Log, show Event Status, display recorded time data, and clear all data.

4. Go to <System> <Date/Time> to enter a new date and time.
5. Go to <System> <Storage> to display information about the DVR's storage devices.

6. Go to <System> <User> to add and delete groups and users.
7. Go to <System> <EZ Setup> to configure the system for basic operation.



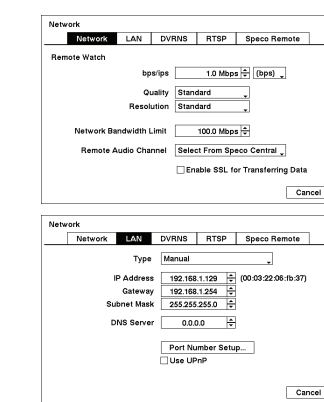
Pre-Event Recording

1. Go to <Record> <Pre-Event> to set up pre-event recording.
2. You can turn individual cameras On or Off for pre-event recording and set the image speed, image quality, resolution and the amount of time to record prior to the event (dwell).



NOTE: When the DVR is in the Time or Time & Event mode, it ignores the pre-event settings and follows the time settings.

Network Setup



1. Go to <Network> <Network> to set the transfer speed and remote quality to limit bandwidth used to the remote site.
2. Go to <Network> <LAN> to select the type of network configuration first then set up LAN parameters for the selected network configuration

Device Setup

1. Go to <Devices> <Camera> to turn On or Off each camera, assign camera titles and hide the video of covert cameras.
2. Go to <Devices> <Audio> to select which camera you want associated with what audio input and enable audio out.
3. Go to <Devices> <Alarm-Out> to establish a schedule and set titles for each alarm output from the DVR.
4. Go to <Devices> <Digital Deterrent> to set up the DVR to sound when events are detected.
5. Go to <Devices> <Display> to select what information will be displayed on the monitor and set up the main monitor.
6. Go to <Devices> <Remote Control> to select a port and make correct settings for a remote control device.

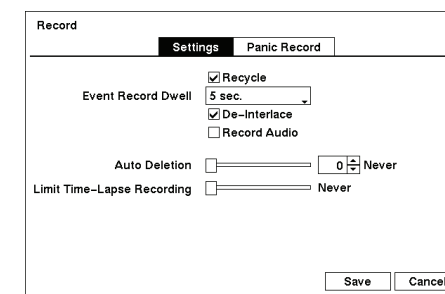
Search and Playback

1. Press the "PLAY/STOP" button on the front panel or select (Search Mode) in the Live Monitoring menu to enter the Playback mode. If a user who has Search authority logs into the system, the user can view recorded images.
2. Press the "MENU" button while in the Search mode or move the mouse pointer to the top of the screen to display the Search Menu. Select the type of search using the arrow buttons and press the button.

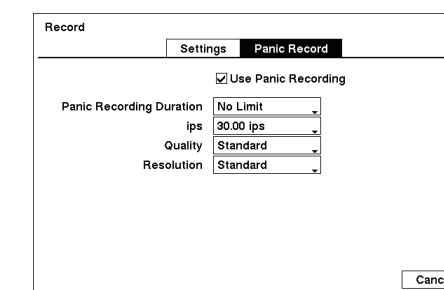


- ① Display
- ② Search
- ③ Go To
- ④ Bookmark
- ⑤ Export
- ⑥ Camera Menu
- ⑦ Alarm
- ⑧ Digital Deterrent
- ⑨ Panic
- ⑩ Data Source
- ⑪ Playback

Record Setup

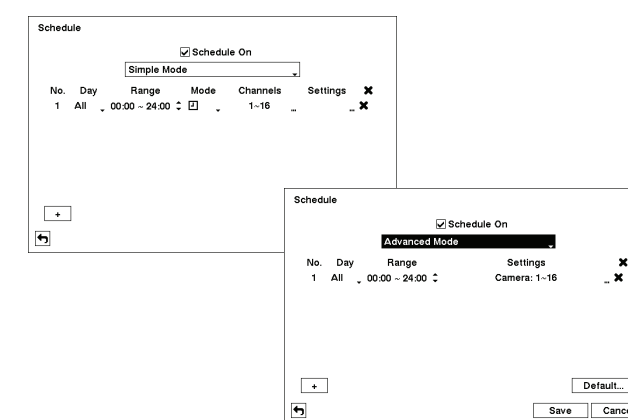


1. Go to <Record> <Settings> to configure recording settings. Highlighting Recycle and pressing the button toggles between On and Off. In the Recycle mode, the DVR records over the oldest video data once all available storage space has been used. When Recycle is turned off, the DVR stops recording once all available storage space has been used.



2. Go to <Record> <Panic Record> to configure panic recording settings. Highlight Use Panic Recording and press the button to toggle between On and Off. When setting to On, set the length of time of the duration, images per second and quality for panic recording.

Recording Schedule



1. Go to <Record> <Schedule> to set up the recording schedule.
2. Highlight Schedule On and press the button to toggle between On and Off. In the Schedule On mode, the DVR records video based on the schedule established in the Schedule screen. When turning Schedule recording Off, you will be asked to confirm your decision. Panic recording will function even when Schedule is turned off.
3. Select the schedule mode between Simple Mode and Advanced Mode first. Highlight the + and press the button to add a schedule item, and highlight the box under the heading and press the button to delete the recording settings. **NOTE:** Refer to the User's Manual for each schedule mode for details.