



Smarter, Smaller HD Video Distribution over Coax

NEW **Zvpro** SERIES



Welcome to ZeeVee!

All ZeeVee products convert your video source to a digital cable channel and broadcast it over coax to all your HDTVs. This guide walks you through basic set-up for all ZvPro Series HD modulators. If you run into any problems during installation, feel free to contact Tech Support at +1 (877) 4-ZEEVEE (1.877.493.3833).

What's in the box:



ZeeVee Modulator



AC Power Cord



Get Going Guide

Sold Separately:



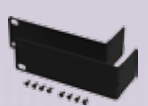
Hydra Audio/Video Cables



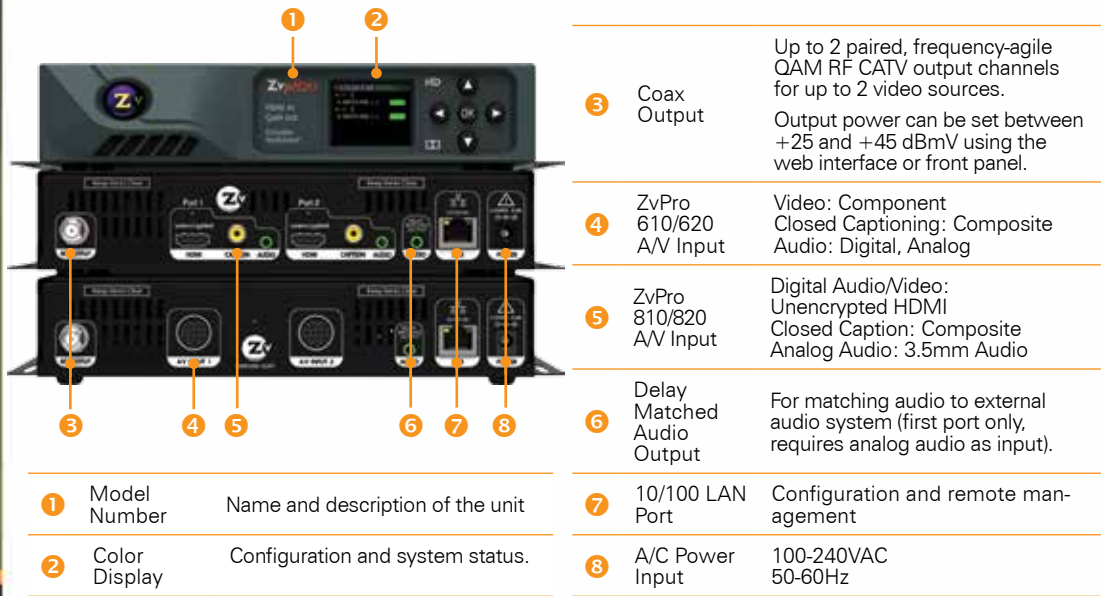
VGA/DIN A/V Cables



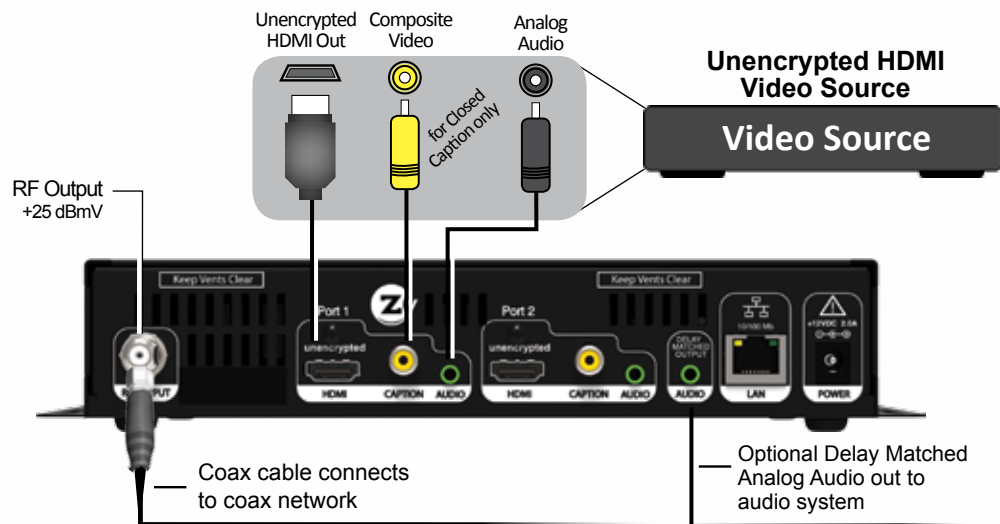
HDMI Cables



Rack Mount Assembly



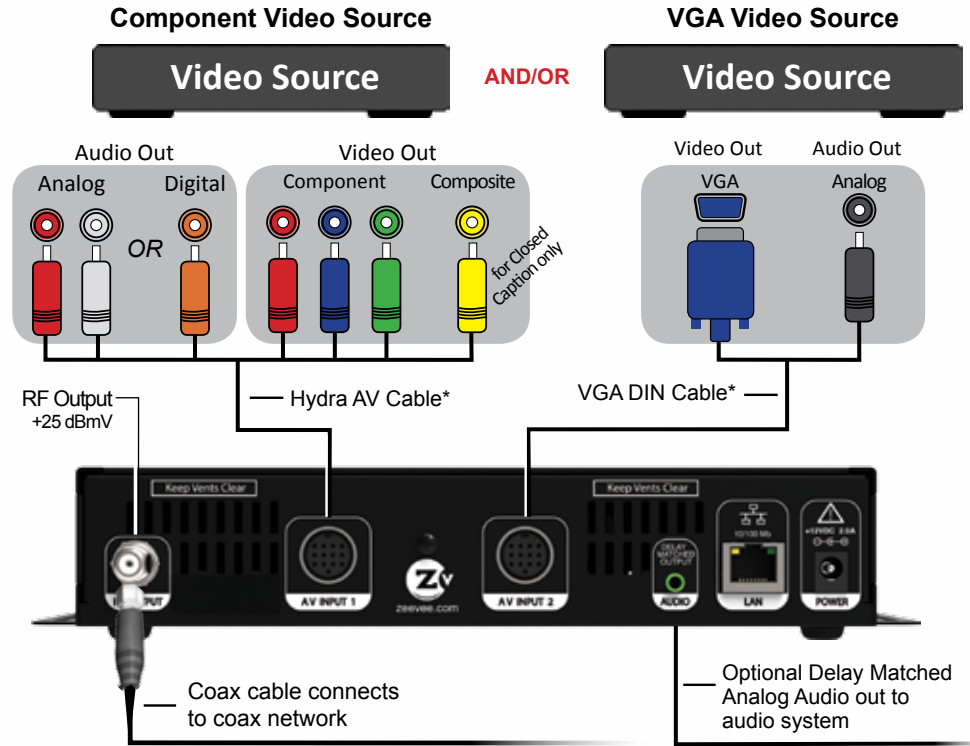
Zvpro820 | **Zvpro810**



Factory default settings in the product allow ZvPro Series modulators to broadcast up to two unencrypted HDMI sources on RF channels 2 and 3 for reception at connected HDTVs.

1. Connect the power supply.
 2. Using an HDMI cable*, connect the video source to the HDMI Input port on the ZvPro.
 3. For Closed Captioning, connect a composite cable from the video source to the Caption port on the ZvPro.
 4. Connect the RF Output of the ZvPro to your **RF network**. Default output power can be changed using the front panel or Maestro, the web-based configuration utility.
- Default output power of the ZvPro is +25dBmV.**
5. Set the RF input on the TV to Cable Mode (not Air or Antenna).
 6. Tune HDTVs to cable channels (see Table 1).[†]
 7. Optional: Use a 3.5mm Analog Audio cable with Delay Matched Audio to send delayed audio from first port to an external audio system. Requires analog audio as input. Configure delay via Maestro advanced options or front panel.

Zvpro620 | **Zvpro610**



Factory default settings allow ZvPro modulators to broadcast up to two HD sources on RF channels 2 and 3 for reception at connected HDTVs.

1. Connect the power supply.
2. Using the Hydra AV cable*, connect the Component (Red/Green/Blue) Video connectors on the AV Cable to the corresponding Video Outputs on your video source. Use the Composite (Yellow) connector for closed captioning only. Connect either the Digital (Orange) or Analog (Red/White) Audio connectors on the AV Cable to the Audio Outputs on your video source. Connect the DIN to the AV Input on the ZvPro.

AND / OR

Using the VGA/DIN cable,* connect the VGA connector to the VGA Output on your video source. Use the Analog Audio connector with the Audio Out on the Video Source. Connect the DIN to the AV Input on the ZvPro.

3. Connect the RF Output of the ZvPro to your **RF network**. Default output power can be changed using the front panel or Maestro, the web-based configuration utility.

Default output power of the ZvPro is +25dBmV.

4. Set the RF input on the TV to Cable Mode (not Air or Antenna).
5. Tune HDTVs to cable channels (see Table 1).[†]
6. Optional: Use a 3.5mm Analog Audio cable with Delay Matched Audio to send delayed audio from first port to an external audio system. Requires analog audio as input. Configure delay via Maestro advanced options or front panel.

*AV cables are available for purchase through your distributor
[†] Many TVs require a full channel scan.

Table 1

AV Input	RF #	HDTV Channel
AV Input 1	2	2.1
AV Input 2	3	3.1



Front Panel Configuration

In most cases, ZeeVee modulators will only require setting the RF and HDTV broadcast channels. This can be done using the Front Panel controls.



- 1. Unlock the panel by pressing / holding together the ◀▶ arrow buttons until “Setup” lights up. Press “OK” to enter the Configuration screen.
- 2. Use the the arrow buttons (▲▼◀▶) to go to each item you want to configure (such as RF Number or RF Power), then press “OK” to edit the highlighted field.



Setup Screen



Configuration Screen



Active Configuration Screen

- 3. Once you've made changes, press “OK” to accept them. You can then select the next item for configuration.
 - 4. When finished making changes, use the arrow buttons (▲▼◀▶) to scroll down to select “Apply,” then click “OK” to save your changes.
- Note: The front panel locks automatically after a few seconds. To make more changes, press/hold the ◀▶ buttons again to re-enter the setup screen.
- 5. Optional: If using the delay matched audio output, select audio delay and use ▲ ▼ to increase or decrease latency of audio to match video at the TV. The delay will change in real time, but you must click Apply to save the changes.

Advanced Configuration with Maestro

When other changes are required, the web-based interface (Maestro) should be used.

- 1. Connect your computer directly to the ZeeVee modulator using a standard Ethernet cable (cross-over cable not required), or connect the unit to any LAN that has a DHCP server.
- 2. After a few moments, an IP address will appear at the top of the front panel display.



- 3. Using any web browser (Chrome or Firefox preferred), go to the IP address to launch Maestro, the configuration tool.
- 4. You will be directed to a login page:

User Name: admin
Default Password: admin



The User Name will always be “admin.”
The default password is “admin” but it can be changed in the configuration tool.

NOTE: Login is case-sensitive.

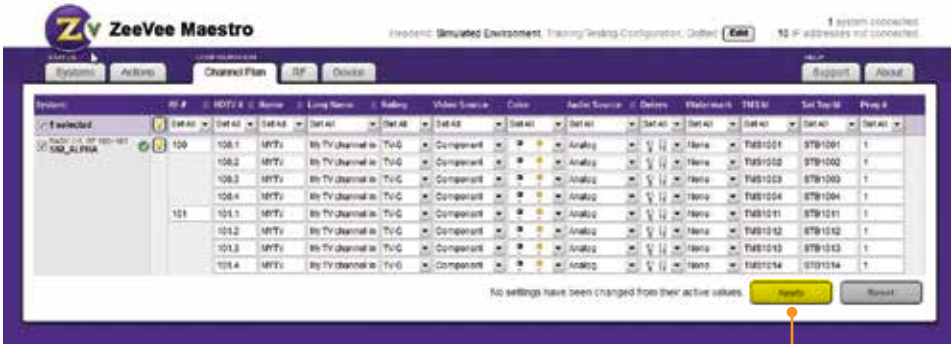
- 5. Tabs across the top allow for different configuration actions.

Click on “Channel Plan” to set the RF number, channel names, video source, etc.



NOTE: RF numbers are entered in pairs based on frequency, refer to Table 2 for information on RF frequency order.

- 6. Click “Apply” to save your changes. Settings are stored in the unit and not lost on power-down.



Click **Apply** to save your changes.

INSTRUCTIONS PERTAINING TO A RISK OF FIRE, ELECTRIC SHOCK, OR INJURY TO PERSONS

Important Safety Instructions. Save These Instructions.

WARNING: When using electronic products, basic precautions should always be followed, including:

- 1. Keep these instructions.
- 2. Heed all warnings.
- 3. Follow all instructions.
- 4. Do not use this apparatus near water.
- 5. Clean only with dry cloth.
- 6. Do not block any ventilation openings. Install in accordance with the manufacturer's instructions.
- 7. Do not install near any heat sources such as radiators, heat registers, stoves, or other apparatus (including amplifiers) that produce heat.
- 8. Do not defeat the safety purpose of the polarized or grounding-type plug. A polarized plug has two blades with one wider than the other. A grounding type plug has two blades and a third grounding prong. The wide blade or the third prong is provided for your safety. If the provided plug does not fit into your outlet, consult an electrician for replacement of the obsolete outlet.
- 9. Power cord must be accessible to allow for the removal of power from the unit.
- 10. Protect the power cord from being walked on or pinched, particularly at plugs, convenience receptacles, and the point where they exit from the apparatus.
- 11. Unplug the apparatus during lightning storms or when unused for long periods of time.
- 12. Only use attachments/accessories specified by the manufacturer.
- 13. Refer all servicing to qualified service personnel. Servicing is required when the apparatus has been damaged in any way, such as power-supply cord or plug is damaged, liquid has been spilled or objects have fallen into the apparatus, the apparatus has been exposed to rain or moisture, does not operate normally, or has been dropped.
- 14. WARNING: To reduce the risk of fire or electric shock do not place this apparatus in a position where it is exposed to dripping or splashing liquids, rain, moisture, or excessively high humidity. Objects containing liquid shall not be placed in proximity to the unit such that they present a risk of spillage onto the apparatus.



The lightning flash with arrowhead symbol, within an equilateral triangle, is intended to alert the user to the presence of uninsulated “dangerous voltage” within the product's enclosure that may be of sufficient magnitude to constitute a risk to persons.

The exclamation point within an equilateral triangle is intended to alert the user to the presence of important operating and maintenance (servicing) instructions in the literature accompanying the product.

FCC Statement

FCC Compliance and Advisory Statement: This hardware device complies with Part 15 of the FCC rules. Operation is subject to the following two conditions: 1) this device may not cause harmful interference, and 2) this device must accept any interference received including interference that may cause undesired operation. This equipment has been tested and found to comply with the limits for a Class A digital device, pursuant to Part 15 of the FCC Rules. These limits are designed to provide reasonable protection against harmful interference in a commercial installation. This equipment generates, uses, and can radiate radio frequency energy and, if not installed or used in accordance with the instructions, may cause harmful interference to radio communications. However there is no guarantee that interference will not occur in a particular installation. If this equipment does cause harmful interference to radio or television reception, which can be determined by turning the equipment off and on, the user is encouraged to try to correct the interference by one or more of the following measures: 1) reorient or relocate the receiving antenna; 2) increase the separation between the equipment and the receiver; 3) connect the equipment to an outlet on a circuit different from that to which the receiver is connected; 4) consult the dealer or an experienced radio/TV technician for help. Any changes or modifications not expressly approved by the party responsible for compliance could void the user's authority to operate the equipment. Where shielded interface cables have been provided with the product or specified additional components or accessories elsewhere defined to be used with the installation of the product, they must be used in order to ensure compliance with FCC regulations.

Contact ZeeVee

For support, repairs and warranty service: +1-877-4ZEEVEE (1-877-493-3833)

Warranty

Limited Two Year Warranty

ZeeVee warrants your ZeeVee ZvPro Series Modulator (MODEL NUMBERS ZVPRO820-NA, ZVPRO810-NA, ZVPRO620-NA, ZVPRO610-NA) against defects in materials and workmanship for a period of two years from the date of purchase. Visit www.zeevee.com for complete warranty details.

To Get Warranty Service

Warranty service will be provided by ZeeVee. If you believe you need service for your ZeeVee ZvPro Series Modulator (ZVPRO820-NA, ZVPRO810-NA, ZVPRO620-NA, ZVPRO610-NA), please contact ZeeVee directly by calling ZeeVee Support at +1 (877) 493-3833. If it is determined that the product needs to be returned for service or exchange, you will receive a Return Material Authorization (“RMA”) number. Our agents will help you through the process through which you can return the product. ZeeVee is not responsible for Customer products received without an RMA number and may reject such products.

To Get Out-Of-Warranty Service

To obtain out-of-warranty service for your ZeeVee ZvPro Series Modulator (ZVPRO820-NA, ZVPRO810-NA, ZVPRO620-NA, ZVPRO610-NA), please contact ZeeVee by calling ZeeVee Support at +1 (877) 493-3833 for information on the possibility of and any costs for repair or replacement of out-of-warranty products. No agent, company, dealer, distributor, or person is authorized to change, modify, or extend the terms of these warranties in any manner.