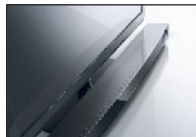




Exceptional Sound Meets Elegant Simplicity



Stylish Design

With gently curved lines and a piano-black finish, it blends harmoniously with your TV and decor. Mount it easily to a wall or just place it on furniture.



Music Streaming



Play music wirelessly from Bluetooth®-compatible smartphones and tablets.



Free Control App

Select input sources, surround sound modes and other settings from your Apple® iOS or Android™ device.



Built-in Subwoofers

No separate box to clutter your room! Two down-firing subwoofers integrated into the bar produce deep, rich bass.



Easy Setup

Connect to your large-screen TV with a digital optical cable (included) or an RCA stereo cable.



Use Your TV Remote

A learning feature allows you to turn the sound bar on/off and control its volume with your TV's remote control.

Powered by music

Surround Sound Bar YAS-103

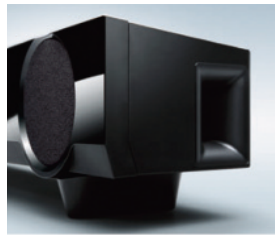
High Quality Sound

Integrated System with Dual Front Speakers and Dual Subwoofers
No need for a separate subwoofer unit! The YAS-103 is equipped with two full-range drivers on the front and two down-firing subwoofers integrated discreetly into the bottom of the bar. Yamaha's original Advanced Bass Extension Processing (surround mode only) delivers a surprising abundance of bass for the size. Although compact, its excellent structural design provides a large volume enclosure, resulting in powerful, high quality sound that makes TV and movies much more enjoyable..



Bass Reflex Port Contributes to Deeper, Richer Bass

The subwoofer drivers, employing large magnets and large-diameter voice coils, work in combination with the large-volume cabinet of the sound bar and bass reflex ports to deliver outstanding bass response. The bass reflex ports have a straight shape and proper length, as well as ducts shaped like trumpet bells, which reduces wind noise for better sound clarity.



Clear Voice Makes Dialogue and Narrations Easy to Hear

Clear Voice raises the level of dialogue and narrations while maintaining overall sound quality. Movies and TV shows, sports commentary and news broadcasts are more clearly audible.

UniVolume Maintains the Same Volume Level

UniVolume

This welcome feature, made possible by Yamaha-developed technology, maintains a consistent volume level between different channels, programs, commercials and input sources. It can be switched on and off.



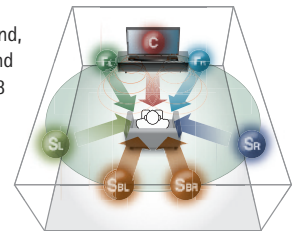
UniVolume Off
Volume suddenly increases

UniVolume On
Volume level is consistent

Surround Realism

AIR SURROUND XTREME Provides Powerful Surround Sound

Some sound bars only deliver stereo sound, while others deliver virtual surround sound with inaccurate imaging. The YAS-103 employs AIR SURROUND XTREME, an exclusive Yamaha virtual surround technology that reproduces 7.1-channel surround sound with excellent imaging and rich presence, far superior to that of any other sound bar. You'll experience an extremely realistic and impressive sound field, with clear dialogue in the front and dynamic sound action at the back.



Compatible with Various Surround Sound Formats

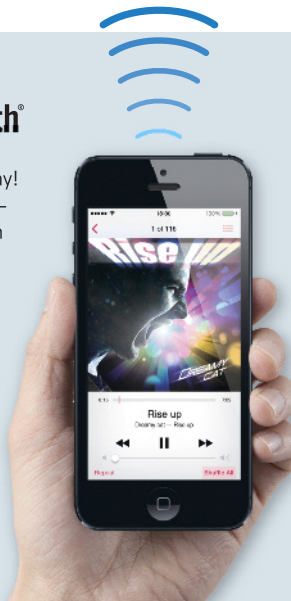
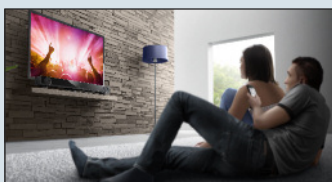
The YAS-103 is compatible with popular surround sound formats, such as Dolby® Digital and DTS Digital Surround™, so you get the full effect of multichannel movie sound.



Bluetooth Wireless Music Streaming from Your Smartphone or Tablet



Fill your home with music the quick and easy way! Stream music from Bluetooth-compatible smartphones, tablets and computers. The YAS-103 can also be set in Bluetooth standby mode, enabling the bar's power to turn on or off automatically for energy-saving convenience.



Home Theater Controller App for Easy Operation



The YAS-103 is compatible with the Home Theater Controller app, available for free download for Apple iOS and Android devices. The app makes it easy to control the sound bar via a Bluetooth connection, including input selections, surround modes and other settings.

Home Menu

Displays easy-to-understand icons, allowing you to check the sound bar's settings at a glance.

Surround Mode

Access listening modes beyond what's available via the sound bar's standard remote control. Surround modes include: Movie, Sports, Game, Music and TV Program.



Surround Sound Bar YAS-103

NEW PRODUCT BULLETIN



High Quality Design

Stylish Design Achieves Both Visual Beauty and Ease of Use

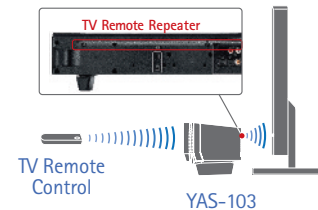
With a body that's low enough to sit neatly in front of a TV (just 4 1/4" or 3 5/8" with stands removed), an elegantly curved front surface and glossy black finish that matches flat-screen TVs, the YAS-103 will add a stylish accent to your entertainment area.



Features For Your Convenience

TV Remote Repeater for Signal Transmission

Even if the YAS-103 blocks the TV remote's signal, the TV Remote Repeater transmits the signal to the TV so operation is unaffected.



Other Notable Features

- Learning function allows operation with the TV remote control
- Audio delay control (lip sync)

Specifications

Digital Amplifier	Maximum Output Power	Front L/R: 30 W + 30 W (6 ohms, 1 kHz, 10% THD)
		Subwoofer: 60 W (3 ohms, 100 Hz, 10% THD)
Front Speaker	Type	Acoustic suspension
	Drivers	Dual 2 1/2" (6.5 cm) full range cone
	Frequency Response	150 Hz-22 kHz
Subwoofer	Type	Bass reflex
	Drivers	Dual 3" (7.5 cm) cone
	Frequency Response	50 Hz-150 Hz
Input Terminals	Digital	Optical Digital x 2, Coaxial Digital x 1
	Analog	RCA x 1
Bluetooth	Version / Audio Codec	Ver. 2.1 + EDR (A2DP, SPP) / SBC, MPEG-4, AAC
General	Power Consumption	22 W
	Standby Power Consumption	0.5 W
	Dimensions (W x H x D)	With stands/brackets: 35" x 4 1/4" x 4 3/4" (890 x 109 x 121 mm)
		Without stands/brackets: 35" x 3 5/8" x 4 1/2" (890 x 91 x 115 mm)
Weight	8.8 lbs. (4.0 kg)	

"Made for iPod," "Made for iPhone," and "Made for iPad" mean that an electronic accessory has been designed to connect specifically to iPod, iPhone, or iPad, respectively, and has been certified by the developer to meet Apple performance standards. Apple is not responsible for the operation of this device or its compliance with safety and regulatory standards. Please note that the use of this accessory with iPod, iPhone, or iPad may affect wireless performance. AirPlay, iPhone, iPod, iPod classic, iPod nano, iPod touch, and iTunes are trademarks of Apple Inc., registered in the U.S. and other countries. iPad is a trademark of Apple Inc. AirPlay works with iPhone, iPad, and iPod touch with iOS 4.3.3 or later, Mac with OS X Mountain Lion, and Mac and PC with iTunes 10.2.2 or later. • The Bluetooth® word mark and logos are registered trademarks owned by Bluetooth SIG, Inc. and any use of such marks by Yamaha Corporation is under license. Other trademarks and trade names are those of their respective owners. • Dolby and the double-D symbol are registered trademarks of Dolby Laboratories. • DTS, DTS-HD, the Symbol, & DTS or DTS-HD and the Symbol together are registered trademarks of DTS, Inc.

© 2014 Yamaha Corporation of America. All rights reserved.

