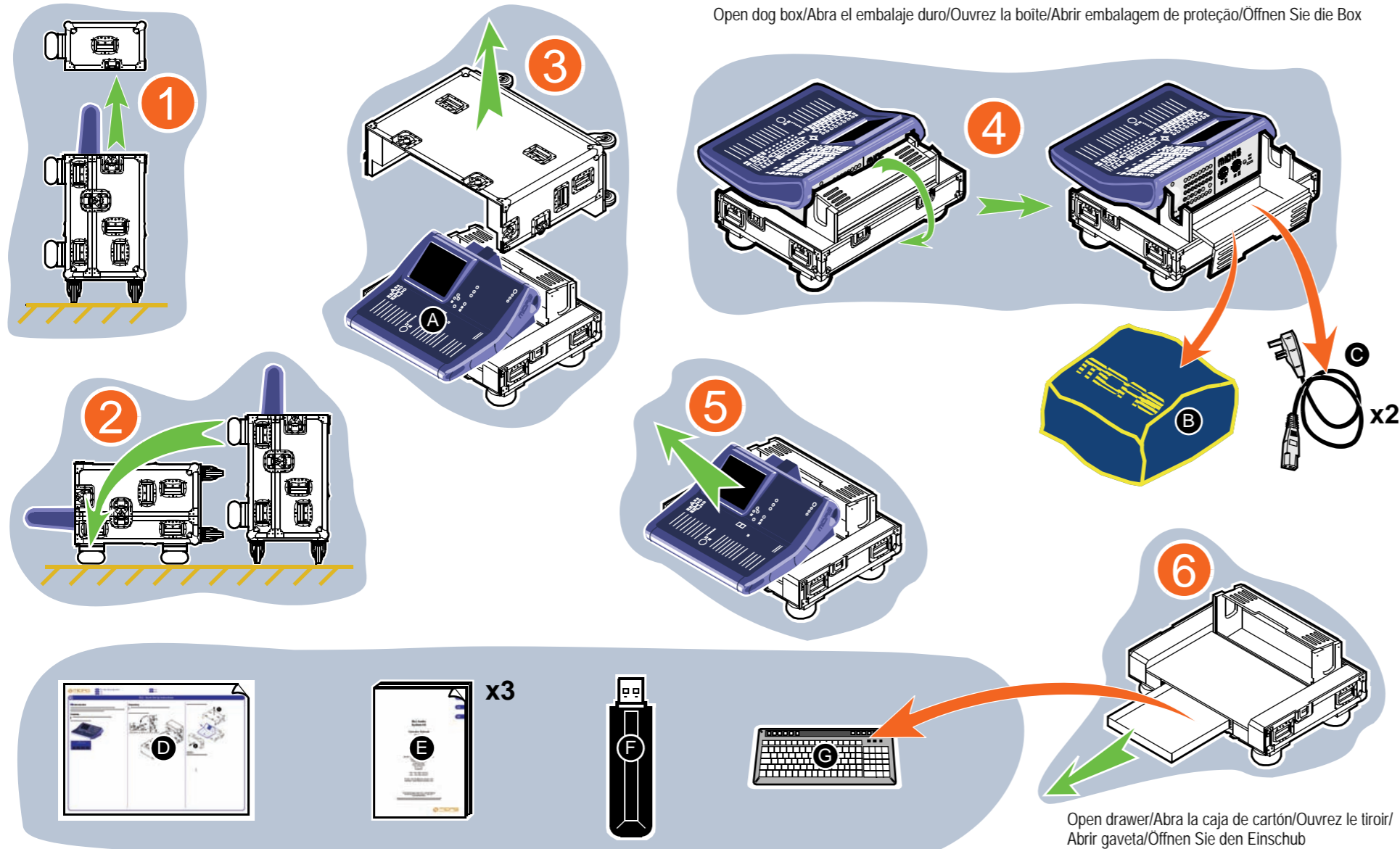


1. Unpacking

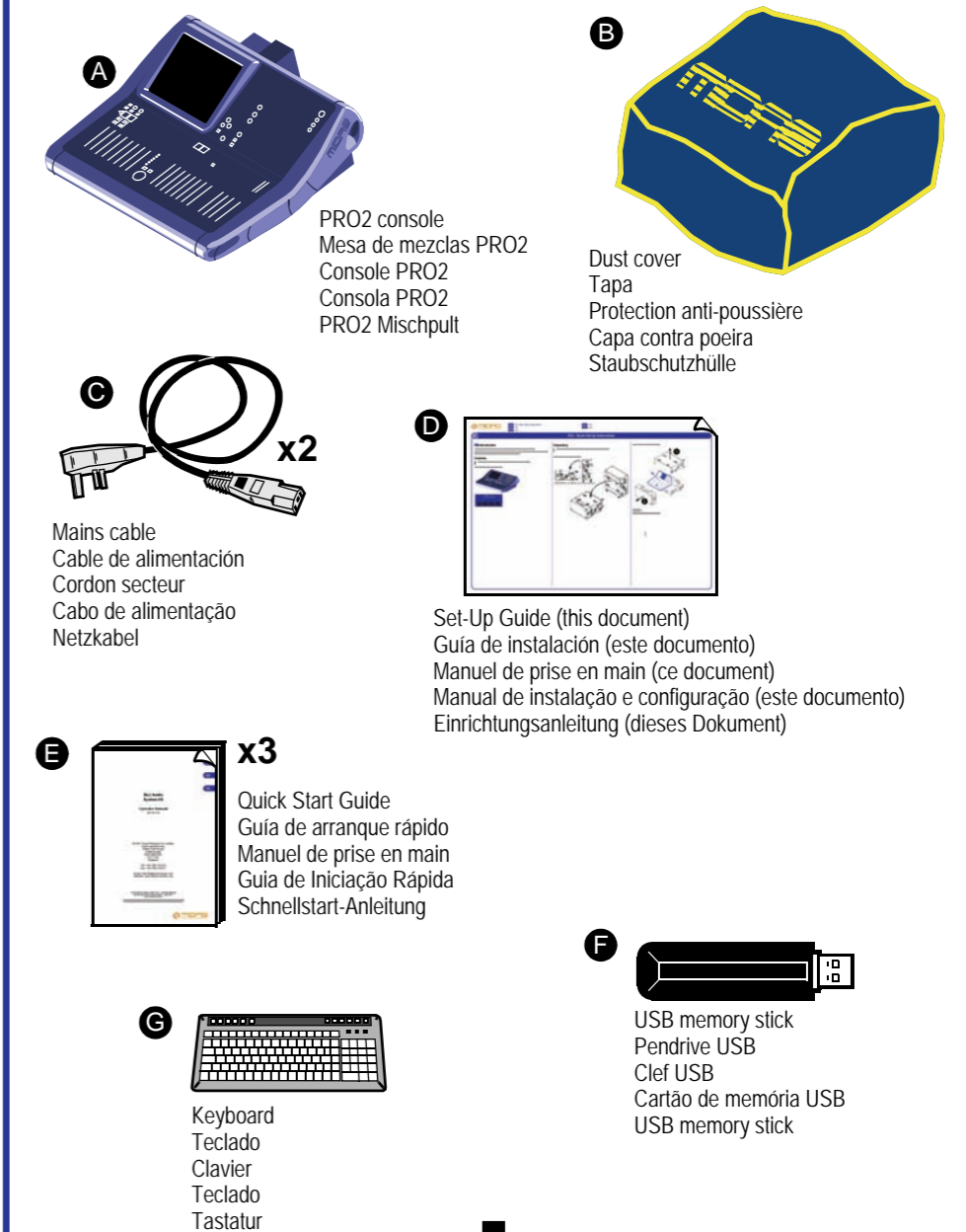
EN Unpacking ES Desembalaje FR Déballage PT Abrir a embalagem DE Auspacken

Open dog box/Abra el embalaje duro/Ouvrez la boîte/Abrir embalagem de proteção/Öffnen Sie die Box



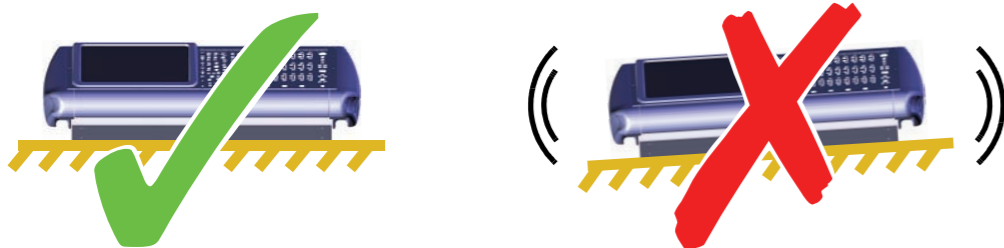
2. System Components

EN System components ES Componentes del sistema
FR Composants du système PT Componentes do Sistema
DE Systemkomponenten

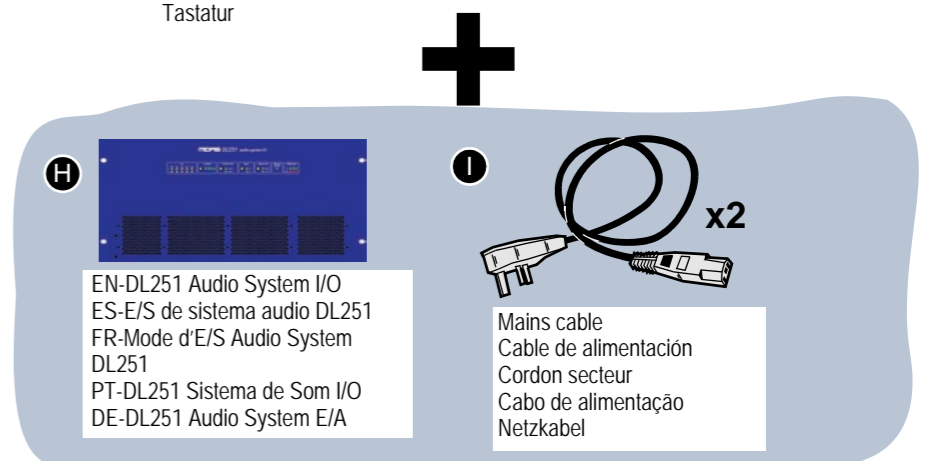


3. Installation

EN Installation ES Instalación FR Installation PT Instalação DE Installation

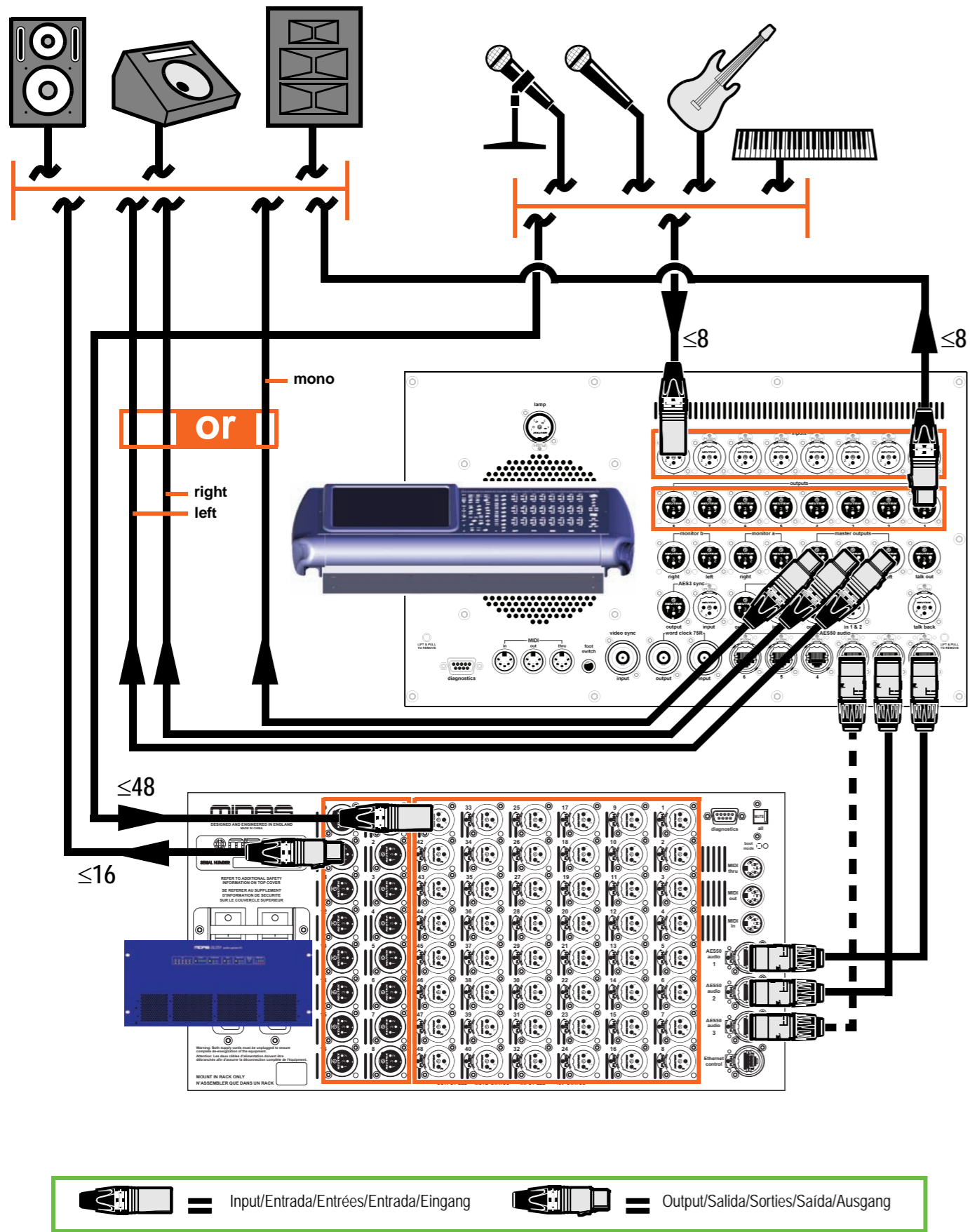


Make sure the console is on a stable surface
Asegúrese de colocar la mesa de mezclas en una superficie plana y estable
Veillez à ce que la console soit sur une surface stable
Certifique-se que a consola se encontra em superfície estável
Platzieren Sie das Pult auf einer stabilen Oberfläche



4. Connecting up

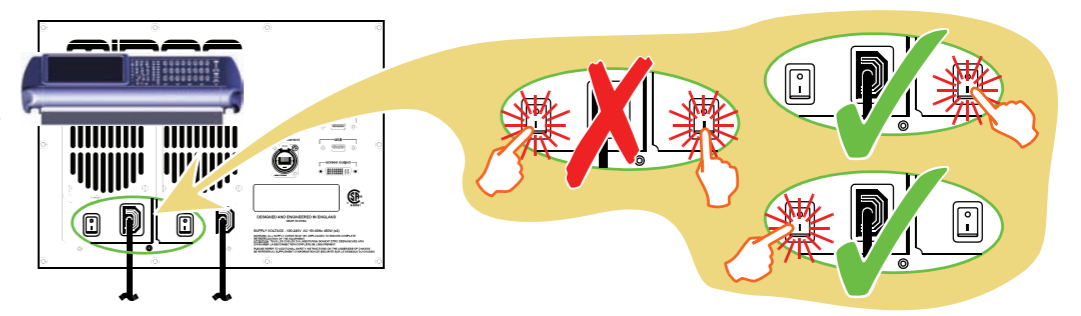
EN Connecting up ES Conexiones FR Connexions PT Conexão DE Anschlüsse herstellen



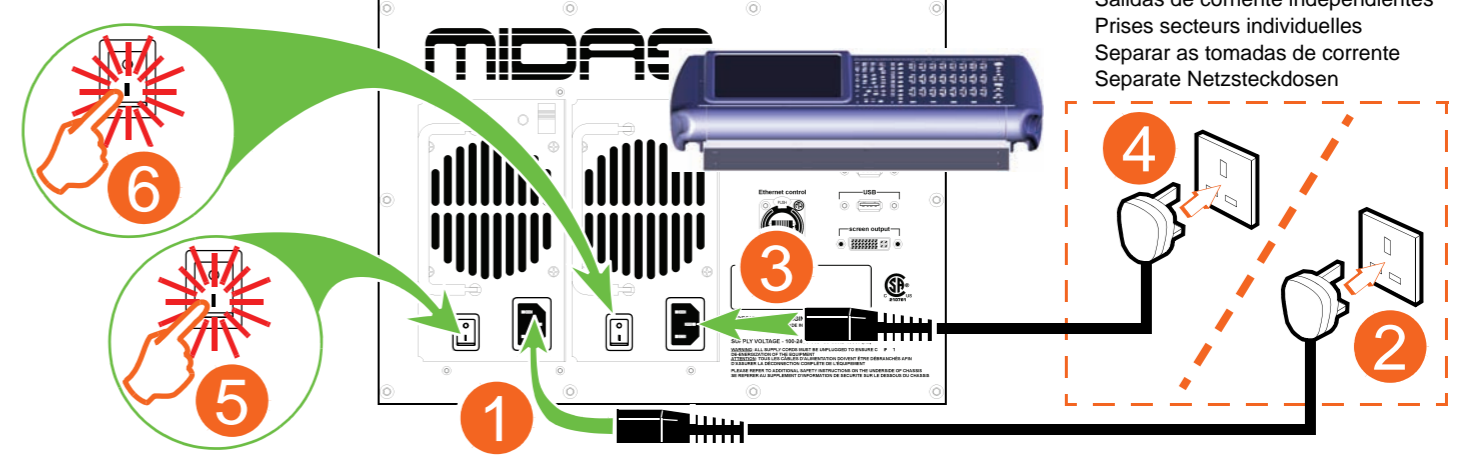
5. Powering up/down

EN Powering up/down ES Encendido/apagado FR Mise sous/hors tension PT Ligar/Desligar DE Ein/Ausschalten

Caution: Do not switch both mains switches on simultaneously.
 Atención: Nunca encienda ambas unidades simultáneamente.
 Attention : Veuillez à ne pas activer les deux interrupteurs secteur en même temps.
 Atenção: Não ligue os dois interruptores de alimentação em simultâneo.
 Vorsicht: Schalten Sie die beiden Geräte nicht gleichzeitig ein.



EN Powering up ES Encendido FR Mise sous tension PT Ligar DE Ein



EN Powering down ES Apagado FR Mise hors tension PT Desligar DE Ausschalten

