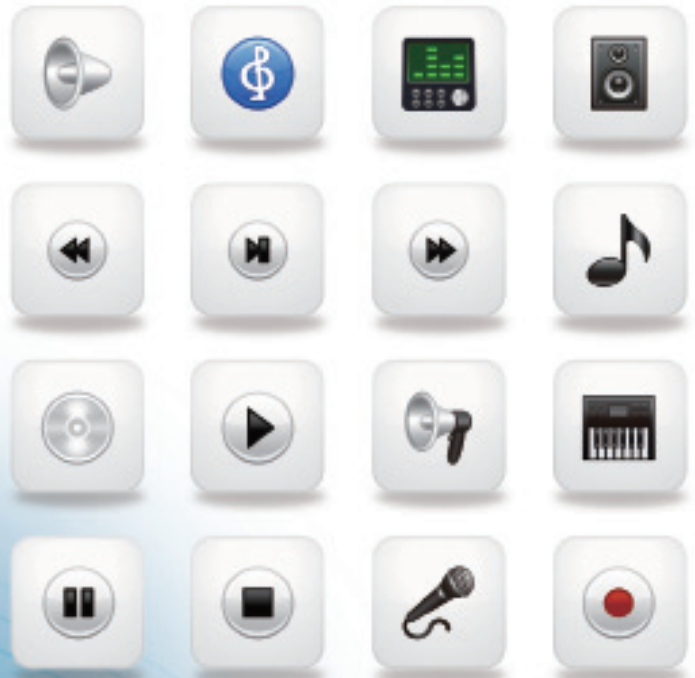


V2-N Series

Professional network power amplifier





V2-N Series

Professional network power amplifier

- 1. V2-N Series Features**
- 2. V2-N Series Control S/W G.U.I**
- 3. V2-N Series Applications**
- 4. V2-N Series Specification**

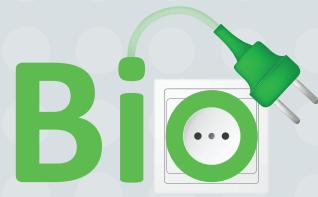
V2-1000N · V2-2000N · V2-3000N · V2-4000N

High-output power amplifier with network control

The CONA V2-N series amplifiers are remote controlled using UTP (CAT-5E) Standard Ethernet cabling via TCP/IP Network protocol. Designed to be compact in appearance the V2-N series amplifiers deliver high power output with high efficiency, low power consumption and low heat dissipation.

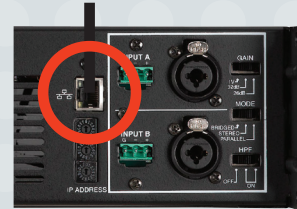
- **Eco-Friendly**

Remote PC control of volume level and power on/off as well as monitoring of amplifier power and operating conditions reduces power consumption for an Eco-friendly environment.



- **Wired or wireless network control**

Remote control is as simple as connecting a UTP (CAT-5E) Standard Ethernet cable to TCP/IP network. The dedicated GUI software easily finds and connects to the amplifier.



- **Software control**

V2-N control software can remotely Power the amplifier On and Off set volume and monitor amplifier output voltage as well as current status.



1. V2-N Series **Features**

- **Excellent response characteristics and S / N ratio**

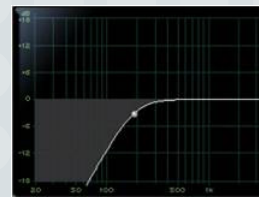
The V2-N has a damping factor of better than 400, a THD of less than 0.05% THD, and a S/N ratio greater than 105dB giving it great tone and high-resolution sound.

※ **THD** : Total harmonic distortion stands. The lower THD means that the equipment produces a more accurate reproduction by reducing harmonics added by electronics and audio media.

※ **S/N Ratio** : Stands for Signal to Noise Ratio expressed in dB. It is a measurement that compares the level of a desired signal to the level of background noise. It is defined as the ratio of signal power to the noise power. The higher the ratio indicates more signal than noise.

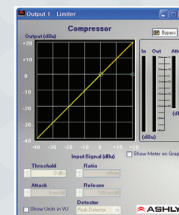
- **50Hz HPF selection**

A 50Hz High Pass Filter removes unnecessary base protecting speakers preventing loss of phase.



- **Clip Limiter**

A Clip Limiter can be set on or off to prevent output distortion and protects against equipment damage.



- **Class-H Technology**

Class H 2 tier linear design ensures ruler-flat response, transparency and detail while minimizing loss.

Technical Specification and features

CONA V2-N series : Power, Pristine Audio Quality and Reliability

V2-N series amplifiers are compact, lightweight, high-efficiency, two-channel, high power amplifiers delivering quality reliable audio performance with sonic perfection.

The latest technology in amplifier design is delivering ultimate power output while protecting the entire system. High-performance and high-quality with clean and precise power makes this amplifier ideal for voice and all styles of music. Perfect for portable live sound and installed sound applications, including outdoor events, stadiums and arenas, casinos, nightclubs, restaurants, hotels, houses of worship, corporate campuses and convention centers.

Professional networking power amplifier
V2-1000N · V2-2000N · V2-3000N · V2-4000N



- **Input Gain Sensitivity**

A 3 position input gain sensitivity selector allows for matching of amplifier input to a variety of sources.



- **Circuit Protection**

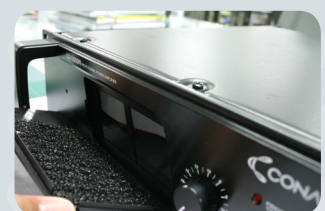
Designed to operate under extreme conditions, a variety of protection circuitry is built into the V2-N series amplifiers such as DC Protection, over-temperature protection, and short-circuit. This ensures stability of the equipment.

- **SMPS - Switch mode power supply provides high efficiency and low weigh**

SMPS - Switch mode power supply provides high efficiency and low weigh. Among their advantages is their reduced physical size, only 2 RU and lower heat dissipation. SMPS offer greater than 90% power efficiency and reduced power consumption over traditional amplifiers.

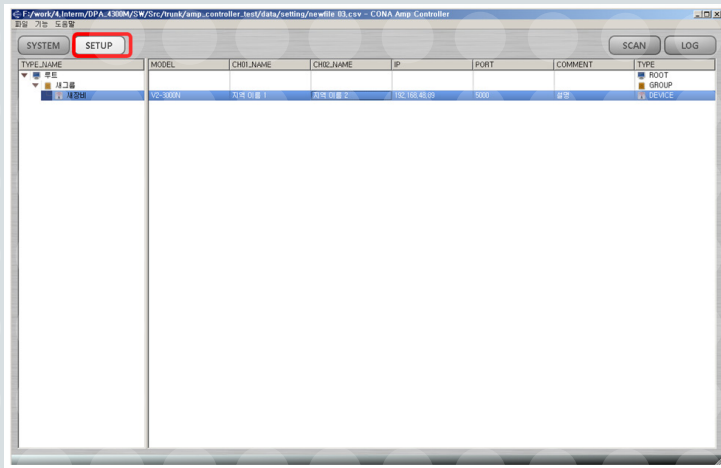
- **Easy to remove and clean dust filter**

Forced air cooled, from front to back with easy access removable dust filter offer easy maintenance and improving performance, efficiency and extending product life.



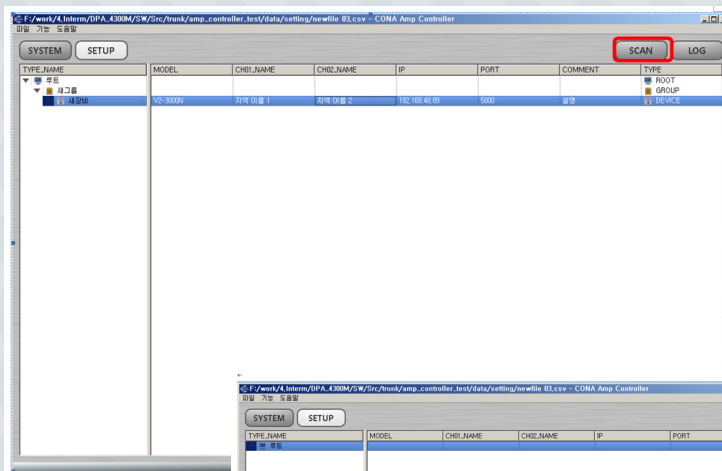
2. V2-N Series **Control S/W G.U.I**

○ Amplifier Network Control And Setup Software

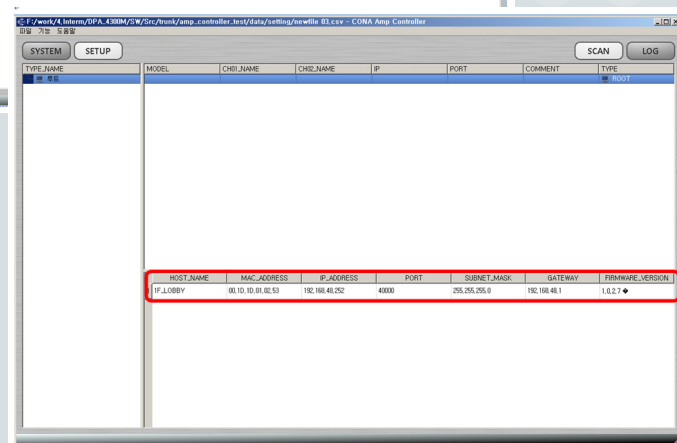


The software will display equipment operating mode and monitor system status. Equipment vcan display equipment by name, group or system wide.

● Auto scan feature



The V2-N network amplifier can be remotely controlled via TCP/IP network using the included GUI Software. Easy Set-Up allows for automatic SCAN and detection of amplifiers on the network. Manual loading of amplifiers is also possible.

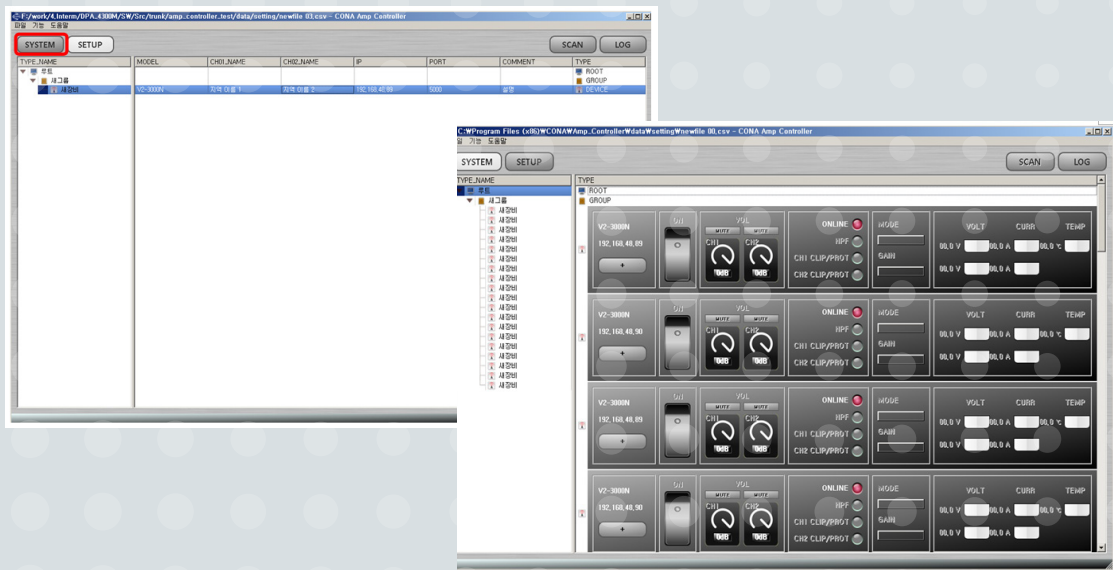


The Software is compatible with all inter-M network amplifiers. The information displayed will vary according to amplifier models.

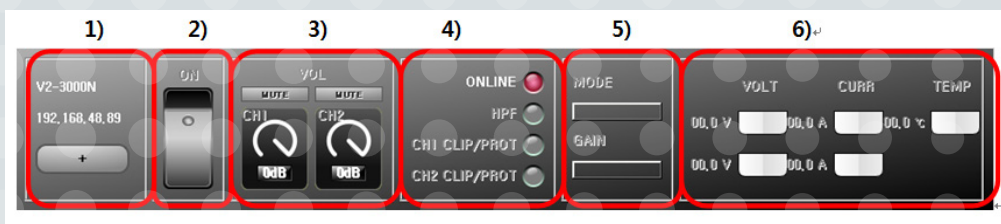


Operating mode

A user-friendly GUI facilitates setting amplifier modes, controlling and monitoring of the amplifier with a simple button click.



- General Information** Amplifier features and information are displayed and configurable.

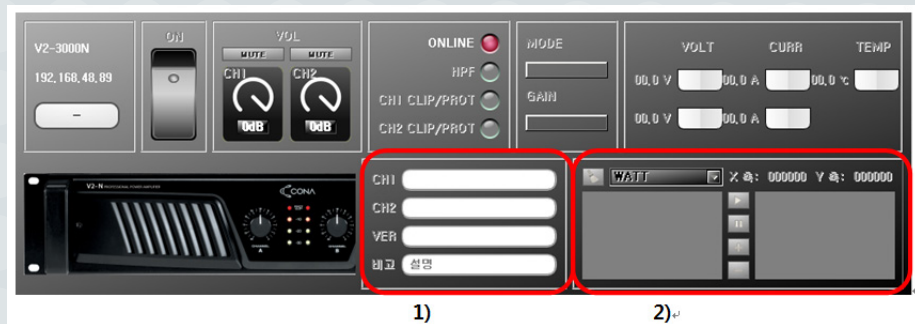


The Software will display Information such as Equipment model number, IP address, Power Status (including online status, HPF filter on and clip protection), Volume levels, and amplifier mode. Amplifier operating conditions including Amplifier output voltage level, output current level and amplifier's internal temperature can also be monitored.

- | | | | | |
|-----------------------------|---------------------|-----------|-----------|-------------|
| 1) Device model information | 4) Amplifier status | ▶ ONLINE | ▶ HPF | ▶ CLIP/PROT |
| 2) Power status | 5) Amp mode | ▶ MODE | ▶ GAIN | |
| 3) Volume information | 6) Operating Status | ▶ Voltage | ▶ Current | ▶ Temp |

2. V2-N Series Control S/W G.U.I

- Equipment detail View** Additional equipment information is available by a simple click of a button. The information screen will display details such as amplifier model number, channel name, and firmware version number. A graphical representation of the amplifier history is also displayed showing changes in output wattage, output voltage output current and temperature.



1) Details

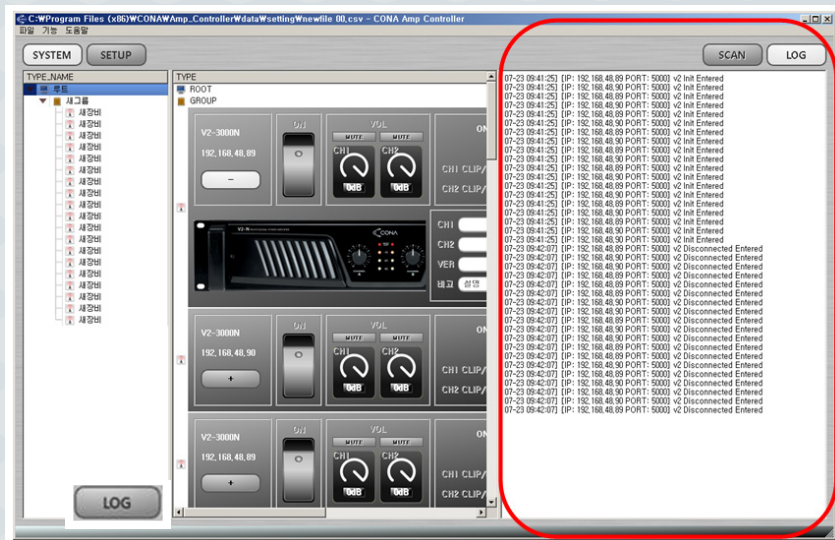
This view will display, the channel name, amplifier firmware version, Remarks.

2) History view

Graphical representation of changes in amplifier operation.

Graphical representation of variation in Temperature, output wattage, output current, and output voltage (level).

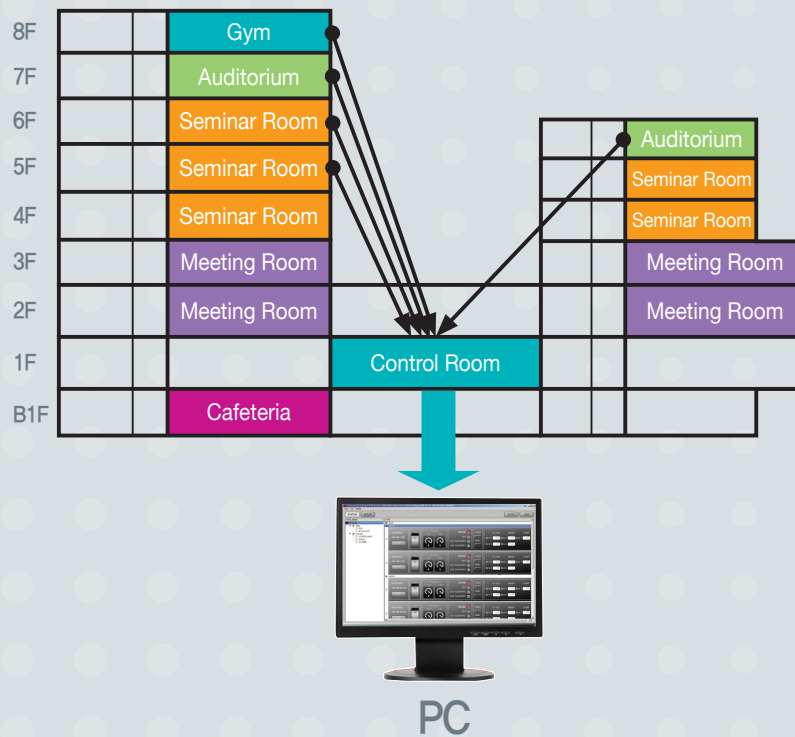
- LOG Information** Amplifier LOG information is stored and updated for operator reference and maintenance purposes.



Simple single button click allow to the user to view the amplifier log file.

3. V2-N Series Applications

Multi-story complex



Stadium application



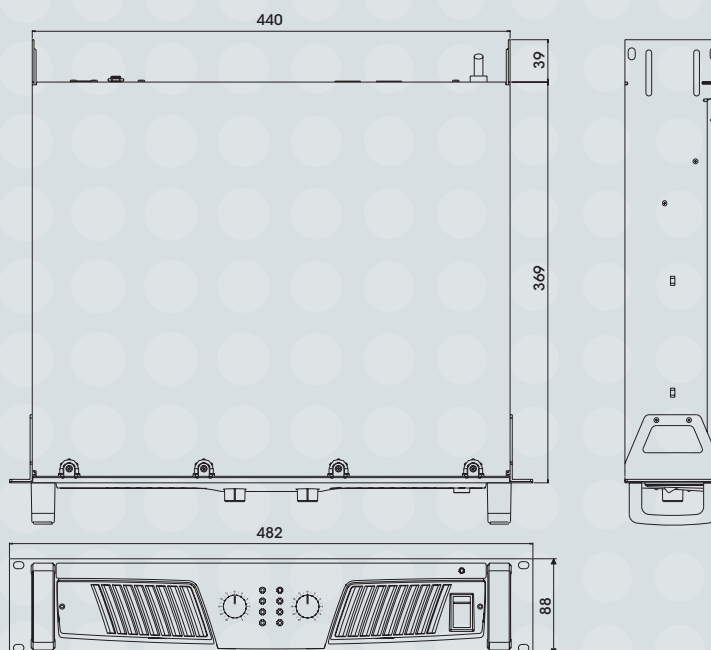
4. V2-N Series Specification

	V2-1000N	V2-2000N	V2-3000N	V2-4000N
STEREO 8Ω (1kHz, THD 1%)	170W	280W	500W	700W
STEREO 4Ω (1kHz, THD 1%)	300W	500W	900W	1200W
STEREO 2Ω (1kHz, THD 1%)	550W	850W	1500W	1900W
BRIDGED 8Ω (1kHz, THD 1%)	650W	1000W	1800W	2400W
BRIDGED 4Ω (1kHz, THD 1%)	1100W	1700W	3000W	3800W
DAMPING FACTOR	≥380	≥400	≥400	≥400
REMOTE CONTROL	Standard Ethernet TCP / IP (10/100 Base TX), RJ-45 Port			
POWER SOURCE	AC 110V / AC 220V, 60Hz			
POWER CONSUMPTION (1/8 power @4Ω)	7A	4A	6A	7A
S/N (@8Ω)	106dB			
WEIGHT (SET)	10.7kg / 23.6 lb	10.9kg / 24 lb	12kg / 26.4 lb	12.1kg / 26.7 lb
DIMENSIONS (SET)	482(W) x 88(H) x 407(D)mm / 19(W) x 3.5(H) x 16(D)in			

V2-N Series

V2-1000N · V2-2000N
V2-3000N · V2-4000N

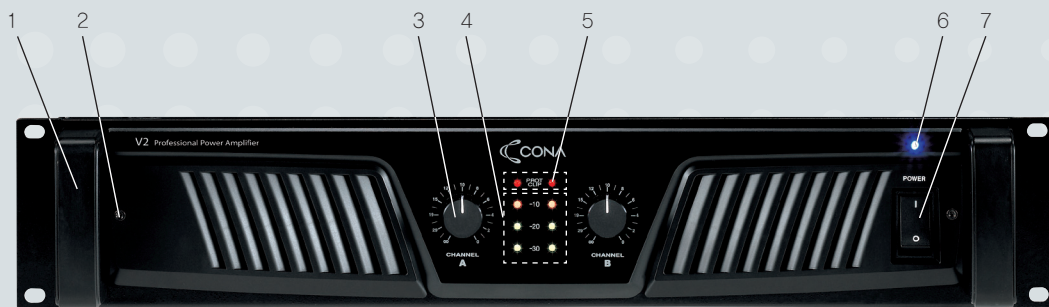
- Amplifier status such as Output voltage, protection circuit, internal temperature and current conditions can be remotely monitored using the Network Control Software.
- Network Remote control of the amplifier functions such power on, Mute, volume level and other is made possible using the Network Control Software.
- Amplifier IP address can be set via three rotary DIP Switches.
- TCP/IP Network remote control using Standard UTP Cable and RJ45 Terminal.
- Included Network remote control Software. (Windows 7 Compatible)



Professional networking power amplifier
 V2-1000N · V2-2000N · V2-3000N · V2-4000N

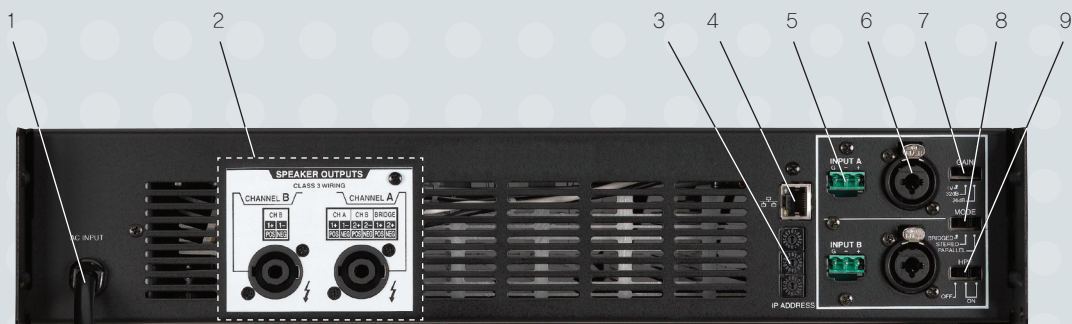


○ Front panel controls



- | | | |
|--------------------------------------|------------------------------------|-----------------|
| 1. Front Handles or Grip (removable) | 4. Signal level LED indicator | 7. Power Switch |
| 2. Dust Filter replacement access | 5. Clip / Protection LED Indicator | |
| 3. Volume Control | 6. Power LED Indicator | |

○ Rear panel controls



- | | | |
|-----------------------------|-------------------------------------|--|
| 1. AC Cord | 4. Ethernet Port | 7. 3 position Input Gain Selector switch |
| 2. Speaker output connector | 5. Euroblock input connector | 8. Bridge/stereo/Parallel mode selector switch |
| 3. IP Address Setup switch | 6. 1/4 TRS / XLR-F Combination Jack | 9. 50Hz High Pass Filter selector switch |

V2-N Series

Professional network power amplifier

V2-1000N

V2-2000N

V2-3000N

V2-4000N



Inter-M Corp. (IMK)

653-5 Banghak-Dong, Dobong-Ku, Seoul, Korea
Overseas Sales Team

Tel_ +82-2-2289-8141~7 Fax_ +82-2-2289-8149 E-mail_ overseas@inter-m.com

www.cona.co.kr

※ Design and specification are subject to be changed without pre notice.