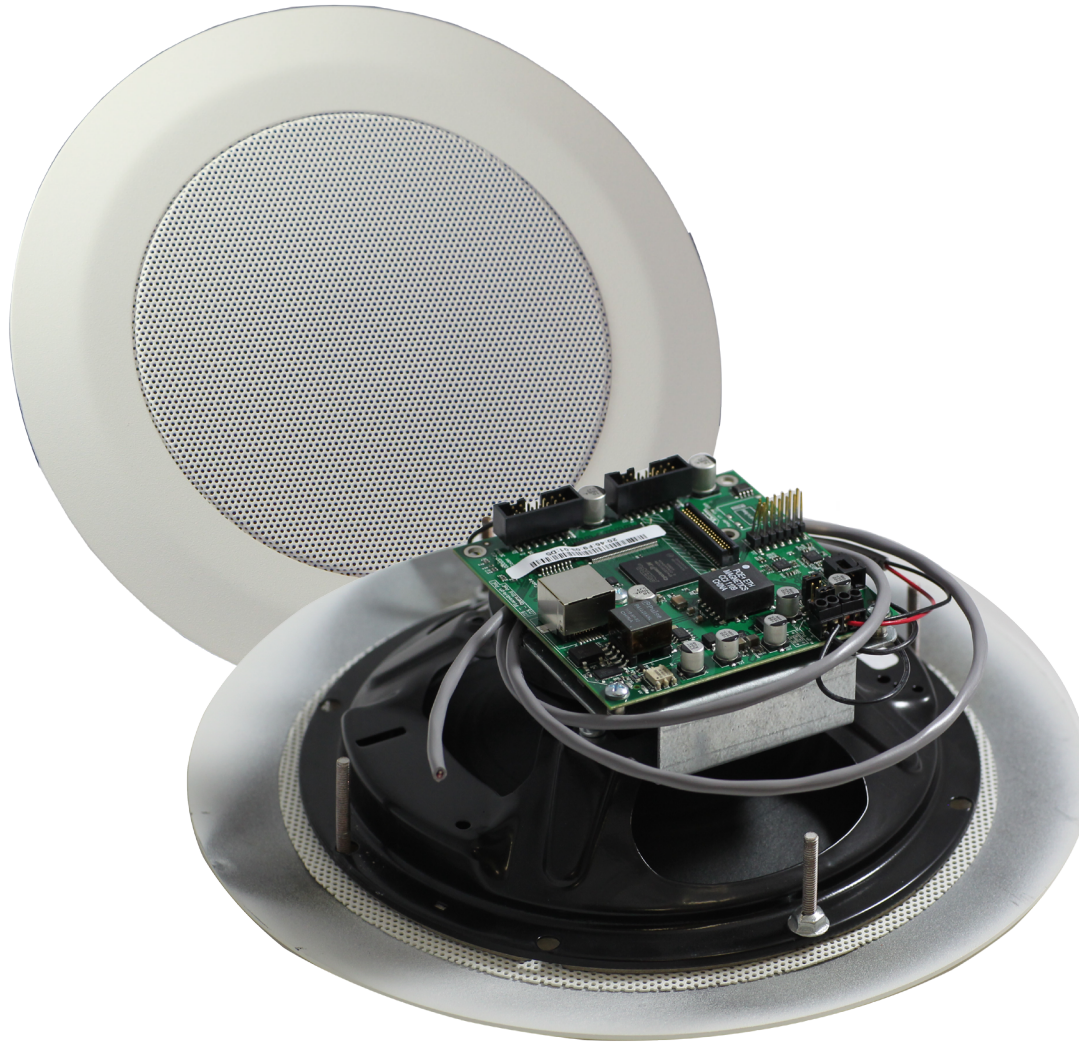


IPSCM-RM

Standard Round Ceiling Speaker (1 endpoint, 2 speakers)



IP Speaker Overview

Advanced Network Device's (AND) IP Speaker is a Power over Ethernet (PoE, PoE+) 2-speaker loudspeaker system that requires only one RJ-45 connector to connect both to existing data networks. It is a single IP endpoint with 2 co-located speakers. Simultaneously broadcast to both phones and speakers.

Features

Built in Web Server:

- Configurable volume
- Device status
- Field upgradable

Easy Installation:

- Only requires CAT 5 connection (up to 300ft) to network
- Power over Ethernet (no power cord or adapter). No other equipment needed
- 2nd speaker is attached to 1st with simple two conductor cable

GPIO:

- 2 inputs, 1 output
- Activate via telephone or programmatically

Line In/ Out:

- Independent line-in.
- Can be configured to send line in audio to the speaker and/or add additional speakers

Multicast:

- Full multicast and broadcast support. Send audio and/or scrolling text to individual, multiple, or all devices simultaneously.

Sound Masking:

- Generate configurable pink noise via push button or programmatically for sound masking

Mounting Options:

- IPSCM-RM-DB, clips for drywall installations
- IPSCM-RM-CB, tile brace for drop ceiling installations
- IPSCM-RM-BB, optional back enclosure
- Standard 8 ft. ceiling: speakers can be placed 16 ft. apart
- Standard 10 ft. ceiling: speakers can be placed 20 ft. apart



Supported Protocols

- SIP
- DHCP
- IPv4
- IGMP
- HTTP
- ICMP
- SLP
- TCP/IP
- TFTP
- UDP
- NTP
- MDNS and MDNS-SD
- SNMPV1 & SNMPV2c

Specifications

- Weight: 4 lbs
- Approx: 10.5" diameter
- PoE (IEEE802.3af) 15.4 W
- PoE+ (IEEE802.3at) 30.0 W
- 10/100 Mb network connection

Speaker Size	8"
Average Sensitivity	95dB, 1W/1M
Audio Power	8 W / 16 W
Frequency Response	60 Hz - 17 kHz
Polar Plot	See diagram 1

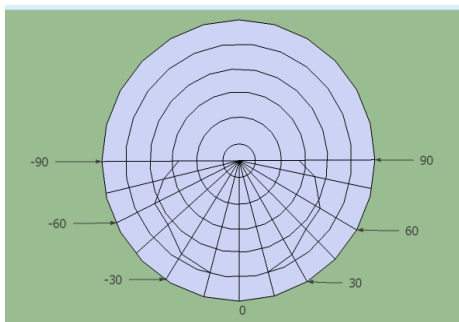


Diagram 1
8" Speaker Polar Plot
2 kHz Octave Band,
Grid Spacing = 6dB/Division

Software Options

- **AND Clockwise:** Instantly finds all of your AND devices, it is a clock/alarm program for scheduling, alarms, events, stopwatch, timer, optional theme sound library, sending News/RSS/Twitter/Weather/Stock feeds, etc.
- **Third Party Software:** AND has a long-standing relationship with InformaCast (SingleWire), and also supports IPSession (IPCelebrate), SA-Announce (Syn-Apps), MessageNet Systems, BellCommander (AcroVista), and others. AND devices will also work with SIP-compatible products/PBX, such as Asterisk, 3CX, Shoretel, etc.
- **Multiple:** Can run Clockwise and third party software concurrently.

