

IPSWD

IP Speaker with LED Display

Capabilities

Audio:

- 8" High efficiency PA Speaker
- Optional ancillary 8-ohm speaker
- Bell scheduling, reminders and alarms
- Clock chimes
- Voice paging from a PC or IP phone, scheduled or ad hoc.
- Use provided notifications, alarms, audio files (sport, holiday, traditional, etc.), or your own

Auto Dimming:

Automatically dim for different times of day.
Reduce power usage at night to save energy.

Clock:

- 3" numbers/text
- Atomic time
- Never needs setting
- Auto-adjust for Daylight Savings
- Display 4 or 6 digits
- Configurable fonts and colors

Scrolling Text:

- Send many types of messages to it:
- Custom Configuration
- Reminders
- Alerts
- Advertising
- RSS/Twitter/News/Weather/Stock feeds
- Configurable fonts and colors
- 1 or 2 Line Display

Microphone:

- Monitoring
- Two way talking/Intercom
- Paging Supervision
- Hands-free talk back

Timer/Stopwatch:

- Display 4 or 6 digits
- Configurable fonts and colors
- Count up or down
- Count days, hours, minutes, seconds, 1/100ths of seconds
- Display timer and clock simultaneously



Features

Built in Web Server:

- Send text messages to it from the web page
- Configurable brightness and volume
- Configurable fonts
- Configurable NTP time server, time zone, etc.
- Device Status
- Field upgradable

Line In/ Out:

- Independent line-in.
- Can be configured to send line in audio to the speaker and/or add additional speakers

Easy Installation:

- Only requires CAT 5 connection (up to 300ft) to network
- Power over Ethernet (no power cord or adapter). No other equipment needed

GPIO:

- 2 inputs, 1 output
- Activate via telephone or programmatically

Multicast:

- Full multicast and broadcast support. Send audio and/or scrolling text to individual, multiple, or all devices simultaneously.

Stop Watch / Timer:

- Count up and down days, hours, minutes, seconds, 1/100ths, with configurable sounds and colors. Event-based trigger.

Sound Masking:

- Generate configurable pink noise via push button or programmatically for sound masking

Two Way Communication:

- Activate via push button
- Allows for full duplex hands free communication

Options

- Optional button for hand-free push to talk

IP Speaker Overview

The IP Speaker is a Power over Ethernet (PoE, PoE+) synchronized clock and intercom that requires only an RJ-45 connector to connect to existing data networks. Simultaneously, broadcast to both phones and speakers. The clock auto synchronizes and can be used as a scrolling text display. Standard built in microphone and speaker for two way communication.



Supported Protocols

- SIP
- DHCP
- IPv4
- IGMP
- HTTP
- ICMP
- SLP
- TCP/IP
- TFTP
- UDP
- NTP
- MDNS and MDNS-SD
- SNMPV1 & SNMPV2c

Specifications

- Weight: 8lbs
- Approx: 13"x5"(2" on bottom) x15"
- PoE (IEEE802.3af) 15.4 W or
- PoE+ (IEEE802.3at) 30.0 W
- 10/100 Mb network connection

Speaker Size:	8"
Average Sensitivity:	95dB, 1W/1M
Audio Power:	8 W / 16 W
Frequency Response:	60 Hz - 17 kHz
Polar Plot	See diagram 1

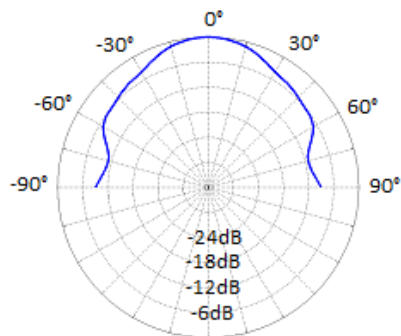


Diagram 1
8" Speaker Polar Plot
2 kHz Octave Band,
Grid Spacing = 6dB/Division

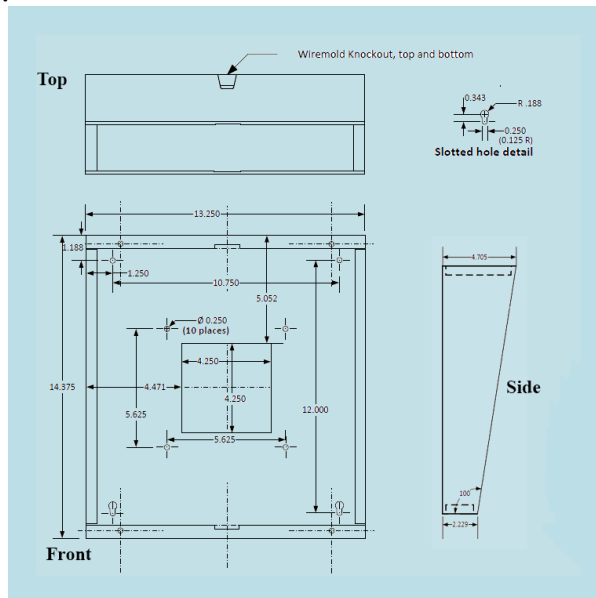
Software Options

- **No software:** External software is not required for atomic timekeeping and sending text messages from the device's web server. The devices can operate stand-alone. However, application software can be used to augment the devices capabilities and integrate the device into a mass notification system, on the phone network, etc.
- **AND Clockwise:** Instantly finds all of your AND devices, it is a clock/alarm program for scheduling, alarms, events, stopwatch, timer, optional theme sound library, sending News/RSS/Twitter/Weather/Stock feeds, etc.
- **Third Party Software:** AND has a long-standing relationship with InformaCast (SingleWire), and also supports IPSession (IPCelerate), SA-Announce (Syn-Apps), MessageNet Systems, BellCommander (AcroVista), and others. AND devices will also work with SIP-compatible products/PBX, such as Asterisk, 3CX, ShoreTel, etc.
- **Multiple:** Can run Clockwise and 3rd party software concurrently.

Mounting Options

IPSWD-RWB comes with a separate back box. Choose from surface mount or flush mount options.

Surface Mount



Flush Mount

