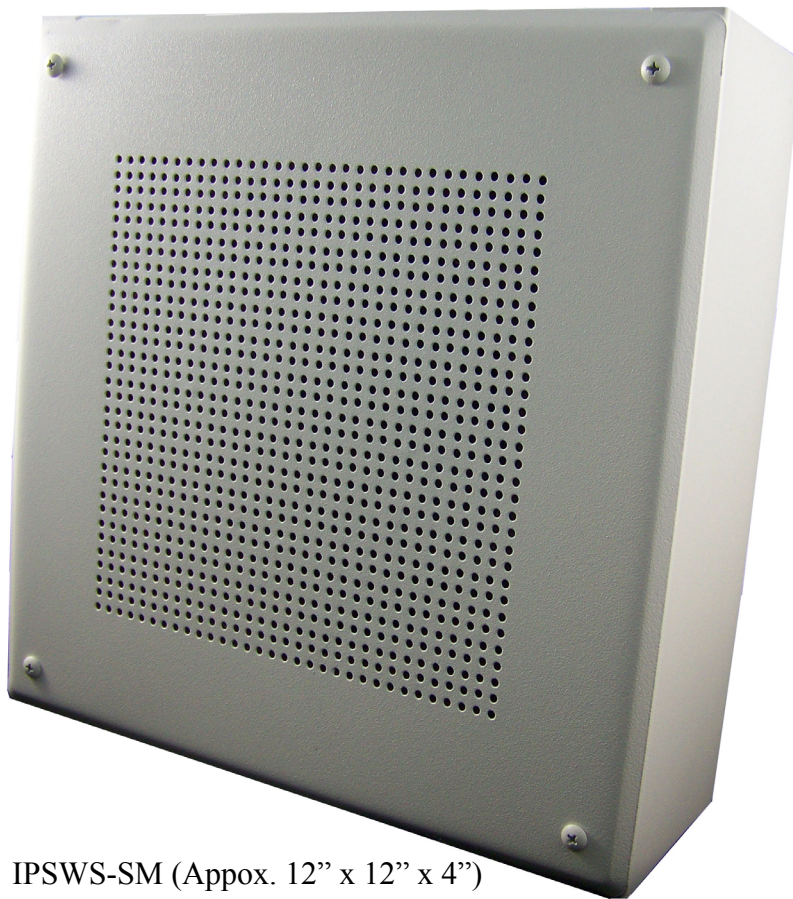


# IPSWS-SM

## Standard Surface - Mount IP Speaker



IPSWS-SM (Appox. 12" x 12" x 4")

### IP Speaker Overview

Advanced Network Device's (AND) IP Speaker is a Power over Ethernet (PoE, PoE+) loudspeaker that requires only an RJ-45 connector to connect to existing data networks. Simultaneously, you can broadcast to both phones and speakers. Also, there is a built in microphone for two way communications.

### Features

#### Built in Web Server:

- Configurable volume
- Device Status
- Field upgradable

#### Line In/ Out:

- Independent line-in.
- Can be configured to send line in audio to the speaker and/or broadcast to additional speakers

#### Easy Installation:

- Only requires CAT 5 connection (up to 300ft) to network
- Power over Ethernet (no power cord or adapter). No other equipment needed

#### GPIO:

- 2 inputs, 1 output
- Activate via telephone or programmatically

#### Multicast:

- Full multicast and broadcast support. Send audio to individual devices, all devices or groups of devices.

#### Sound Masking:

- Generate pink noise via push button or programmatically for sound masking

#### Two Way Communication:

- Activate via push button
- Allows for full duplex hands free communication
- Inter-operates with Cisco and other VoIP networks and phones.

### Options

- Optional button for hands-free push to talk



## Supported Protocols

- SIP
- DHCP
- IPv4
- IGMP
- HTTP
- ICMP
- SLP
- TCP/IP
- TFTP
- UDP
- NTP
- MDNS and MDNS-SD
- SNMPV1 & SNMPV2c

## Specifications

- Weight: 9lbs
- Approx: 12"x4"x12"
- PoE (IEEE802.3af) 15.4 W or
- PoE+ (IEEE802.3at) 30.0 W
- 8W/16W total audio output power
- 10/100 Mb network connection

Speaker Size	8"
Average Sensitivity	95dB, 1W/1M
Audio Power	8 W/ 16W
Frequency Response	60 Hz - 17 kHz
Polar Plot	See diagram 1

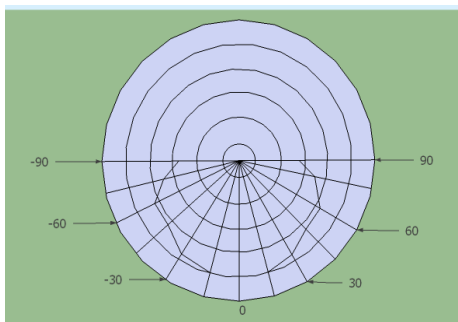
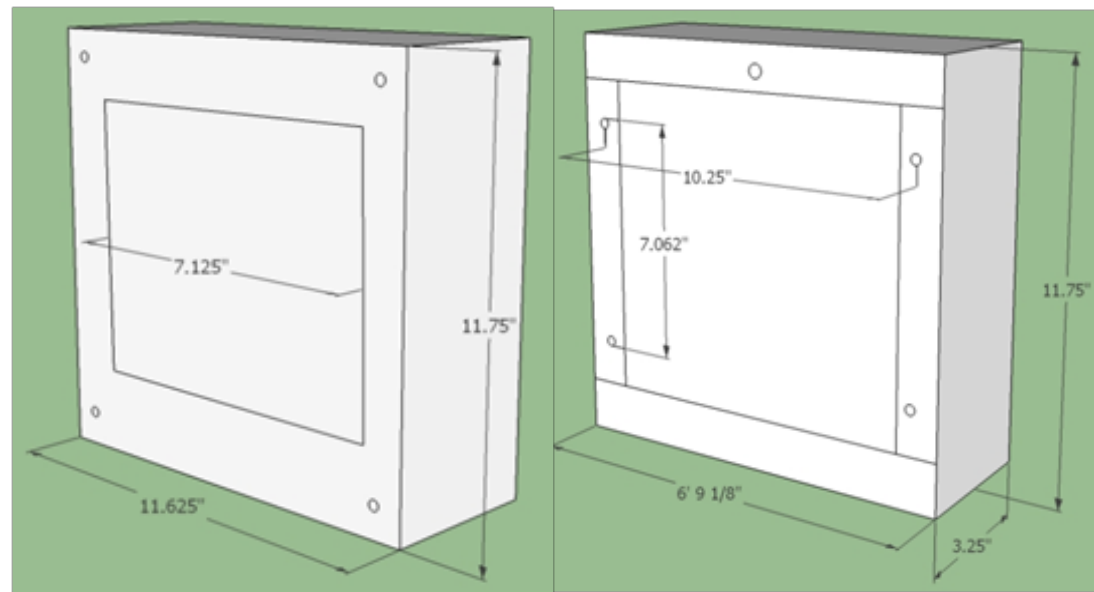


Diagram 1  
8" Speaker Polar Plot  
2 kHz Octave Band,  
Grid Spacing = 6dB/Division

## Software Options

- **AND Clockwise:** Instantly finds all of your AND devices, it is a clock/alarm program for scheduling, alarms, events, stopwatch, timer, optional theme sound library, sending News/RSS/Twitter/Weather/Stock feeds, etc.
- **Third Party Software:** AND has a long-standing relationship with InformaCast (SingleWire), and also supports IPSession (IPCelerate), SA-Announce (Syn-Apps), MessageNet Systems, BellCommander (AcroVista), and others. AND devices will also work with SIP-compatible products/PBX, such as Asterisk, 3CX, Shoretel, etc.
- **Multiple:** Can run Clockwise and 3rd party software concurrently.



Front

Back

