



## Stereo192-DSD DAC



Reference Quality  
Digital - Analog Converter  
User's Manual v.2.0  
Firmware 1.7.2 – Feb 8<sup>th</sup>, 2013

This manual may be updated at any time.

To download the latest version, technical support, and for setup tips

please visit:

<http://www.mytekdigital.com>

Contact Mytek tech support at:

[hifisupport@mytekdigital.com](mailto:hifisupport@mytekdigital.com)

or at:

tel. +1 (347) 384-2687

Mytek Digital  
148 India St.  
Brooklyn, NY 11222  
USA

## Contents

|  |           |
|--|-----------|
| <b>Introduction.....</b>                           | <b>4</b>  |
| STEREO192-DSD DAC SILVER PREAMP VERSION.....       | 5         |
| STEREO192-DSD DAC BLACK PREAMP VERSION.....        | 6         |
| STEREO192-DSD DAC BLACK MASTERING VERSION.....     | 7         |
| <b>Front Panel.....</b>                            | <b>8</b>  |
| <b>Rear Panel.....</b>                             | <b>9</b>  |
| <b>Main Menu.....</b>                              | <b>10</b> |
| <b>LED Menu.....</b>                               | <b>11</b> |
| <b>Menu Operation.....</b>                         | <b>12</b> |
| INPUTS.....  | 12        |
| UPSAMPLING.....                                    | 12        |
| FILTERS.....                                       | 13        |
| SYNC.....  | 13        |
| VOLUME CONTROL.....                                | 13        |
| VOLUME TRIM.....                                   | 13        |
| FUNCTION BUTTONS.....                              | 14        |
| DISPLAY.....                                       | 14        |
| REMOTE.....  | 14        |
| FIRMWARE.....                                      | 14        |
| <b>Driver Installation and Uninstallation.....</b> | <b>15</b> |
| USB 1.1 WINDOWS AND OS X.....                      | 15        |
| OS X - USB 2.0.....                                | 16        |
| OS X – FIREWIRE.....                               | 20        |
| WINDOWS – USB 2.0.....                             | 23        |
| WINDOWS - FIREWIRE.....                            | 28        |
| <b>Firmware Update .....</b>                       | <b>35</b> |
| <b>Windows and OS X.....</b>                       | <b>35</b> |
| <b>Internal User Adjustments.....</b>              | <b>36</b> |
| <b>Remote Control Setup.....</b>                   | <b>37</b> |
| STEREO192-DSD DAC APPLE REMOTE SETUP.....          | 37        |
| STEREO192-DSD DAC RC 5 REMOTE SETUP.....           | 37        |
| <b>Signal Flow.....</b>                            | <b>39</b> |
| <b>FireWire Recording.....</b>                     | <b>40</b> |
| WINDOWS FIREWIRE RECORDING SETUP.....              | 40        |
| OS X FIREWIRE RECORDING SETUP.....                 | 42        |
| <b>Troubleshooting.....</b>                        | <b>44</b> |
| <b>Specifications.....</b>                         | <b>45</b> |
| <b>Important Safety Information.....</b>           | <b>46</b> |
| <b>Warning.....</b>                                | <b>47</b> |
| <b>Warranty.....</b>                               | <b>48</b> |

## Introduction

The Mytek Stereo192-DSD Digital to Analog Converter is an ultra-transparent mastering grade digital audio playback system. Designed around state of the art Sabre 32 bit conversion technology, the Stereo192-DSD DAC delivers features and sound quality beyond expectations of the most discerning listener. The DAC is capable of converting high resolution PCM audio up to 192 kHz, and DSD audio (up to 128xDSD on USB2 and FW) , through high-speed USB 2.0, FireWire, AES/EBU, SPDIF, or TOSLINK. For the ultimate “plug and play” solution, a USB 1.1 port is available for a driver free connection that can handle PCM audio up to 96 kHz sample rates.

The “Preamp” version includes RCA analog inputs allowing the DAC to operate as a preamp. The “Preamp” model is available in a silver front panel with the LEDs removed for a cleaner look. These LEDs can also be disabled in the menu on the both black panel versions.

The “Mastering” version of the DAC includes DSD SDIF inputs that can be used to connect professional DSD systems. They replace analog inputs found in preamp version.

### Features

- 32 bit ESS Sabre DAC (8 mono DACs to 2 stereo outs)
- Native 192kHz PCM and DSDx128 conversion
- Ultra-low jitter (10 pico second) internal clock generator
- Internal hardware PCM upsampler for CD sources to 192kHz/24bit (can be disabled)
- Choice of Sharp and Slow PCM Filters; 50k/60k/70k DSD Filters
- Choice of Transparent Analog or Digital stepped volume control with Bypass for the purest signal path
- Independent control of Main Outs and Headphones
- High Current, High Slew Rate ultra low distortion 500mA audiophile headphone amp
- AES/EBU, S/PDIF, Toslink, ADAT digital inputs
- FireWire400, USB2.0, USB1.1 computer interface
- Analog input or DSD SDIF digital input (depending on model)
- Wordclock In/Out
- Apple and RC 5 remote control compatible
- 115/230V switchable linear power supply

## Stereo192-DSD DAC Silver Preamp Version

(part # St192-DAC-S-P)



This version is intended for computer audiophiles who prefer a minimalist look with not too many lights. A pair of unbalanced analog inputs can be selected in addition to all available digital inputs. As with other inputs, it can be routed via the analog stepped attenuator to both main outputs and headphones. The “Silver Preamp” version has the same functionality, specs, sound quality and firmware as the “Black Preamp” version with the exception of the black front panel and the presence of LED level meters. Functionality, technical specs and sound quality are the same for all three versions with the exception of the analog vs. SDIF DSD inputs, color of panel and presence of LED level meters.

## Stereo192-DSD DAC Black Preamp Version

(part # St192-DAC-B-P)



This hardware version is intended for both computer playback and mastering professional audio recording and monitoring. A pair of unbalanced analog inputs can be selected in addition to all available digital inputs. As with the other inputs, it can be routed via the analog stepped attenuator to both main outputs and headphones. The “Black Preamp” version is the same as the “Silver Preamp” version with the exception of the black front panel and the presence of LED level meters. Other functionality, technical specs, sound quality and firmware are the same for all the versions with the exception of the analog vs. SDIF DSD inputs, color of panel and presence of LED level meters.

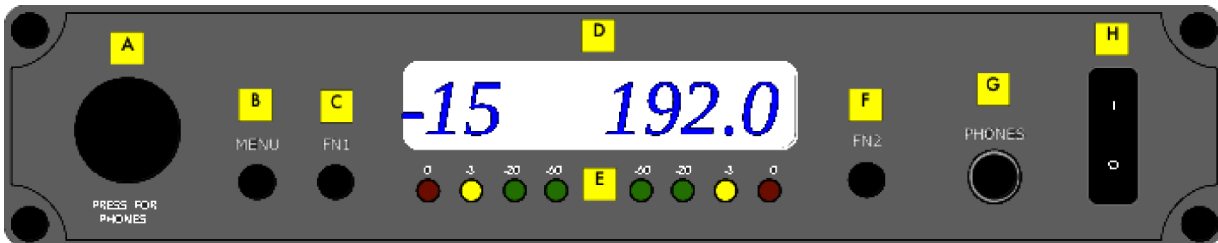
***Stereo192-DSD DAC Black Mastering Version***

(part # St192-DAC-B-M)



This version is intended for mastering engineers involved in downloadable DSD and SACD mastering/remastering and for general professional use. A pair of BNC SDIF DSD inputs allows digital transfers from existing professional DSD recording equipment and professional SACD players to the computer's hard disk. This version is the same as the "Black Preamp" version but with digital DSD inputs instead of analog. Functionality, technical specs, sound quality and firmware are the same for all 3 versions with exception of the analog vs. SDIF DSD inputs, color of panel and presence of LED level meters. The SDIF digital inputs are not intended for general consumer use.

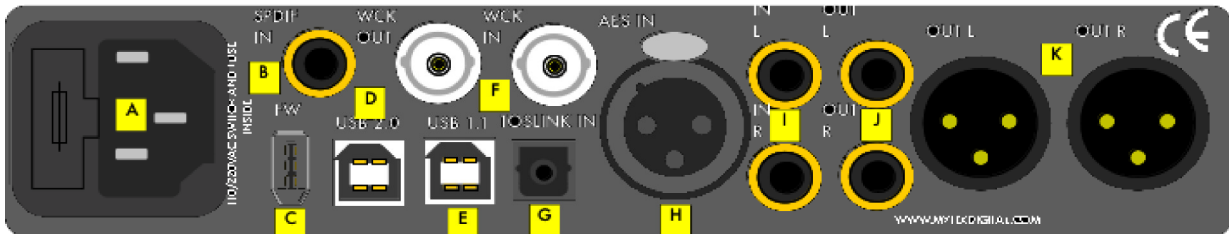
## ***Front Panel***



- A Multifunction Rotary Encoder. This encoder is both a knob and a Button. Pressing the knob engages the button function of the encoder. It's primary function is to control the volume level of both the main outputs and headphones. It also functions as MENU navigation for configuring playback options. The first function of the Encoder Button is to select the main output volume control or the headphone volume control. Two dots next to the two digit volume value on the display indicate headphone fader. A single dot indicates the digital volume control option has been selected by the user.  
In MENU mode the Encoder Button functions as "Enter" or a forward command.
- B Menu Button. Press this button to enter the main menu, or to cancel out of it.
- C FN1 (Function 1) Button. This button is user assignable (via the main menu.) Default opens up the Input Selection Menu.
- D LED Display. This is the main display. Volume is shown on the left and the current sample rate on the right. It's also used to display the menu selections.
- E LED Level Meters (Black Preamp or Black Mastering only). These LEDs represent the signal's digital level.
- F FN2 (Function 2) Button. A second user programmable switch (also via the main menu.) Default is Mute.
- G Headphone Output: High-Fidelity high-current headphone amplifier capable of driving the most demanding headphones.
- H On/Off Switch. Powers the unit on or off.

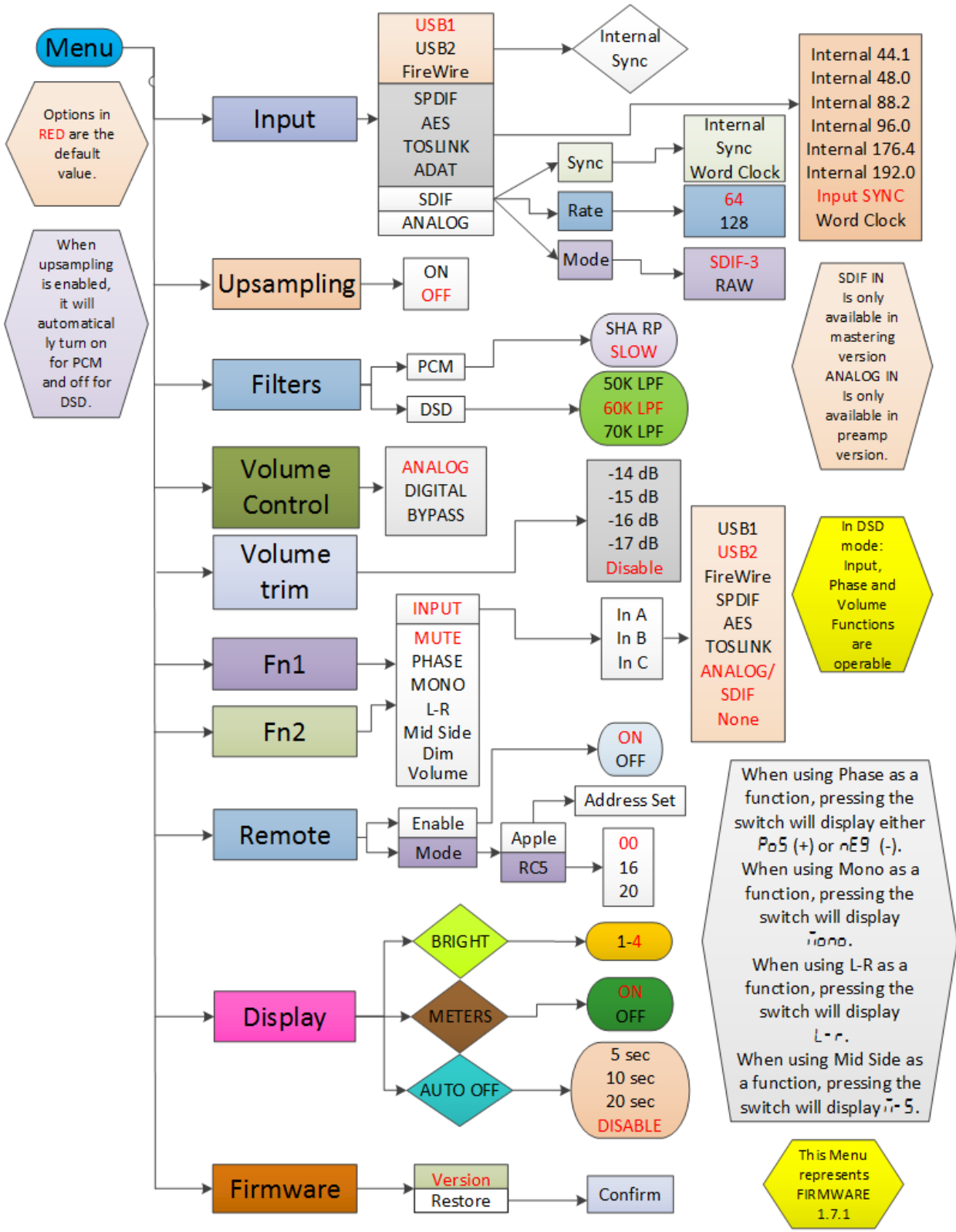


## Rear Panel

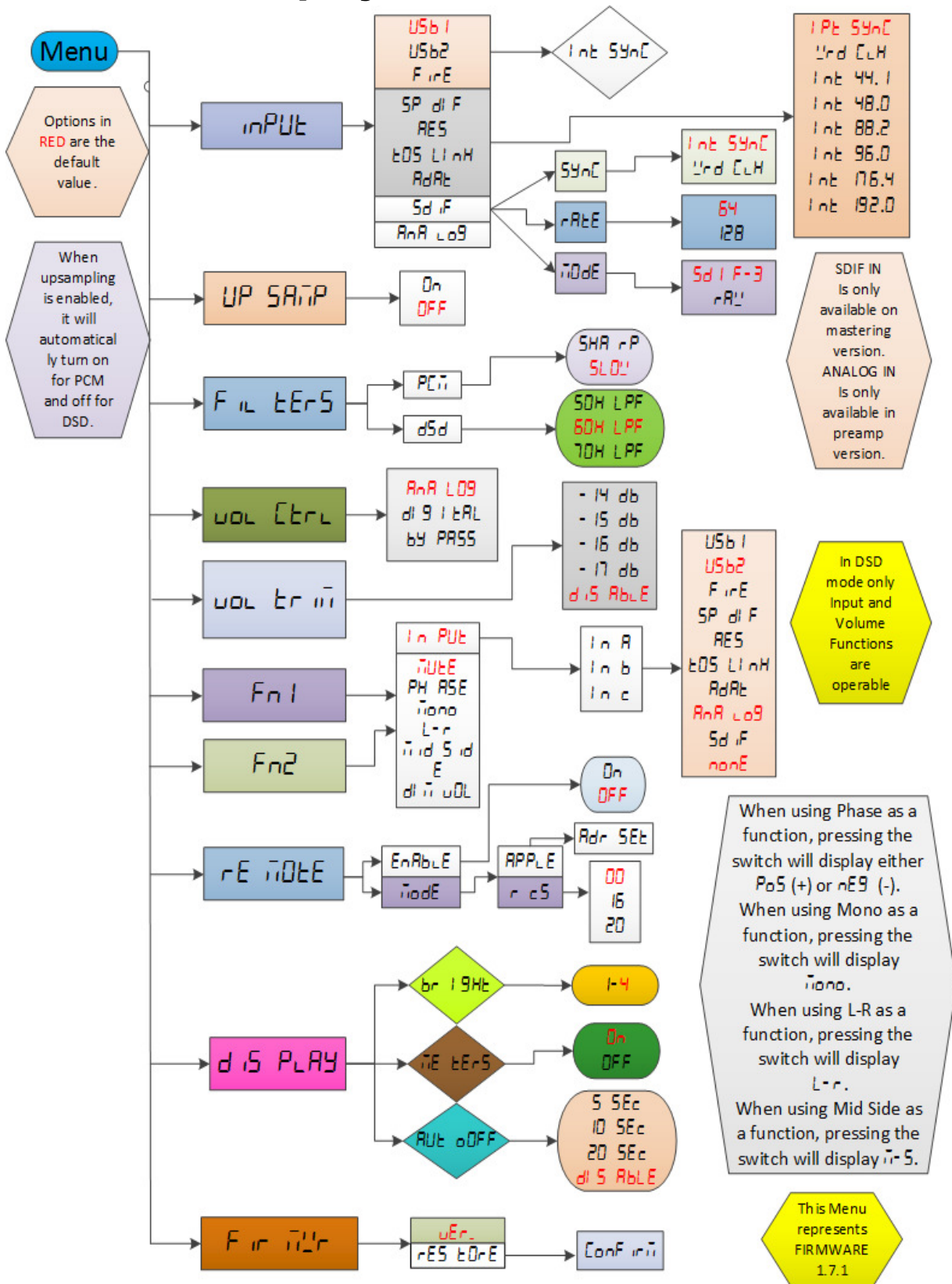


- A IEC Power socket and fuse. Standard 115/230V receptacle. (100V for Japanese Models).
- B S/PDIF Coax Input. Consumer digital input that accepts up to 192kHz sampling rate. This input can also be used to transmit digital data to computer via FW connection.
- C FireWire 400 Port. 6-pin computer interface. Can be used with FireWire 400 > FireWire 800 cable or Firewire 400>Thunderbolt. 192kHz/DSD capable.
- D USB 2.0 Port. Female USB B-type port for hi-speed (480Mbps) computer interface. 192KHz/DSD capable.
- E USB 1.1 Port. Female USB B-type port for full speed (12 Mbps) computer interface. 96kHz capable.
- F Wordclock BNC Input and Output. Used for professional clock distribution. 192KHz and DSD reference clock.
- G Optical Input (Toslink). Consumer digital input that accepts up to 192kHz PCM and DSD DOP standard via optical S/PDIF. Also accepts professional ADAT signal up to 96kHz. This input can also be used to transmit digital data to computer via FW connection.
- H AES/EBU Input. Professional digital input that accepts up to 192kHz. Accepts DSD DOP standard input. This input can also be used to transmit digital data to computer via FW connection.
- I Unbalanced RCA Stereo Analog Input (Preamp version only).
- J Unbalanced RCA Stereo Analog Output.
- K Balanced XLR Stereo Analog Output.

## Main Menu



## Menu as displayed with LEDs



## Menu Operation

Menu is accessed by pressing the Menu button. Once in the Menu, turning the rotary encoder cycles through the options while pressing the encoder advances the selection. Pressing Menu button again backs the selection one level until you exit the menu. All settings are preserved when the unit is powered off.

### Inputs

**USB 1.1** - Driver-less, plug-n-play computer input that is limited to 96kHz.

**USB 2.0** - Hi-speed computer input that is capable of 192kHz and 64x and 128xDSD playback. Use of this input requires drivers installed on the computer. USB2.0 or the Firewire inputs provide the highest quality playback.

**FireWire** - Hi-speed computer input that is capable of 192kHz and 64x and 128xDSD playback. Use of this input requires drivers installed on the computer. USB2.0 or the Firewire inputs provide the highest quality playback.

**S/PDIF** - Coaxial S/PDIF input capable of receiving PCM data up to 192kHz and DSD DOP (64xDSD only). This input can also be used to transmit digital data to computer via FW connection.

**AES/EBU** - Professional digital input capable of receiving PCM data up to 192kHz and DSD DOP (64xDSD only). This input can also be used to transmit digital data to computer via FW connection.

**Toslink** - Optical S/PDIF input capable of receiving PCM data up to 192kHz and DSD DOP (64xDSD only). This input can also be used to transmit digital data to computer via FW connection.

**ADAT** - Optical ADAT input capable of receiving PCM data up to 96kHz.. Signal is present on Channel 1-2 only. This input can also be used to transmit digital data to computer via FW connection.

**Analog** - Unbalanced RCA analog input that can bypass the volume control or be routed through it. Available on the Pre version only.

**SDIF** - Professional DSD input capable of receiving DSD64x and DSD128x formats. This input can also be used to transmit digital data to computer via FW connection. Mastering version only.

### Upsampling

The Stereo192-DSD DAC can upsample all PCM data to 32 bit 192kHz allowing analog bandwidth of 100kHz alias free. Upsampling for PCM, will automatically turn off when DSD data is encountered.

*With USB1.1, PCM data is automatically upsampled.*

## Filters

There are several filtering options for both PCM and DSD. The filters affect how upper “out-of-audio” band frequencies are rolled off.

### PCM

Sharp - Brickwall cutoff at  $\frac{1}{2}$  sampling rate.

Slow - Gentle cutoff with some aliasing.

### DSD

Cutoff frequency - 50, 60 or 70 Kilohertz for two pole gentle lowpass filter to reduce high frequency noise.

## Sync

**Internal Sync** - Incoming data is synced to the converter's ultra-low jitter internal crystal oscillator. This choice assures the best DAC performance and is superior to any (even Atomic) clock supplied from outside because of its close proximity to DAC chipset.

**Input Sync** - Incoming data clock signal is reclocked by built in JET(tm) PLL circuit and used as DAC reference clock.

**Word Clock** - Incoming word clock signal is reclocked by built in JET(tm) PLL circuit and used as DAC reference clock.

*Sync options are only available for S/PDIF, AES/EBU, Toslink, ADAT and SDIF.*

## Volume Control

There are several methods of volume control available:

**Analog** - The output level is controlled by a programmable analog fader. This also allows independent level control of the main output or headphone output.

**Digital** - The output level is controlled digitally with ultra precision 32bit digital attenuator. This choice does not allow for independent level control of the main and headphone outputs. Digital fader measures well, but most users prefer the sound of analog fader.

**Bypass** - Relay bypass of all faders for the cleanest output path possible. Only the main outputs are affected while the headphone output is still controlled by analog fader.

## Volume Trim

This setting allows the choice of DAC headroom. It can be set from -14dB to -18dB. Default is Disabled referenced at -18dB which results in 0VU, +4dBu or 1.228 volts sinewave RMS measured between pins 2&3 of XLR outs. Trim set at -14dB will result in signal 4dB lower than if it was set to -18dB. (Additionally output can be further reduced by 6dB by using internal gain jumpers).

## Function Buttons

Two buttons, FN1 and FN2, are user programmable switches. Each button's function is set inside the Function menu. The following options are available (\*PCM Only – not DSD):

**Input** - Allows the user to select 3 user "Presets," Input A, Input B, Input C; Each input can be assigned to either SPDIF, AES, Toslink/ADAT, USB1, USB2, FireWire, Analog/SDIF or none. The none allows to only switch between 2 Input presets.

**Mute** - Mutes the audio output.

**Phase** - Inverts the signals phase.

**Mono** - Sums left and right channel to mono.

**L-R\*** - Subtracts one channel from the other, canceling out mono information while leaving the stereo information.

**Mid Side\*** - A combination of Mono (L+R) and L-R, the mid signal is the sum of L and R (mono) and the side signal is the stereo information from the L-R operation.

**Dim Vol** - Instantly lowers the level by 20dB.

## Display

**Brightness** – Sets the brightness the LED display.

**Meters** - Turns the signal level meters on or off. (Available on black panel versions only).

**Auto-Off** - This will turn the whole display off after selected amount of time (secs). A dim dot will stay lit to show that the unit is operational. Engaging any controls will wake up displays.

## Remote

**Enable** - On and Off. Allows the Stereo192-DSD DAC to be controlled by a Remote Control.

**Mode** - Select the remote type Apple or RC 5.

**Adress Set** – One time use of Apple remote ENTER button pairs the remote with the DAC.

## Firmware

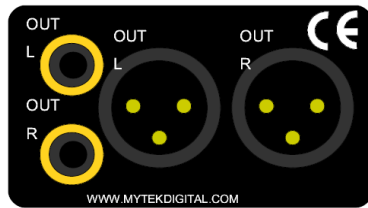
**Version** - Displays the current Firmware version.

**Restore** - Restores the unit's parameters to the factory default.

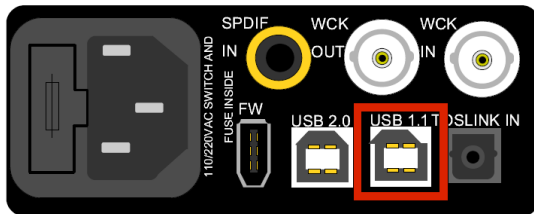
## DAC Installation

### USB 1.1 Windows and OS X

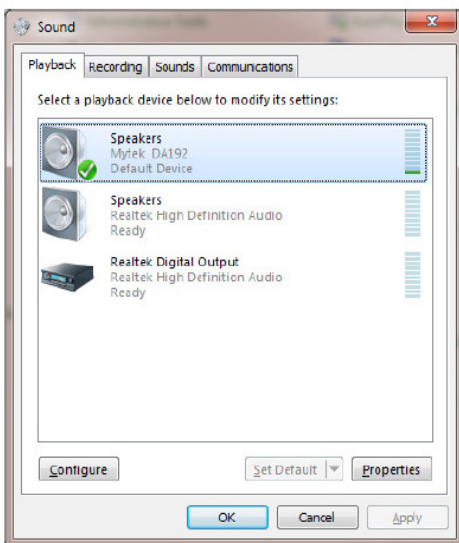
1. Connect the Analog Outputs to your powered speakers/amplifier. Balanced connections (XLR) are typically for professional audio equipment while unbalanced connections (RCA) are typically for consumer audio equipment.



2. Connect the unit to your computer using USB1.1.



3. Turn on both the computer and the converter, then your speakers/amplifier.
4. DAC comes as default set to USB1.1 input. Select Mytek as the default playback device in your operating system's sound properties. The DAC should now play all sounds generated by OS or software.



## OS X - USB 2.0

USB2.0 and Firewire require installation of Mytek drivers on both Win and Mac OS.  
(the latest driver are available at [mytekdigital.com](http://mytekdigital.com)).

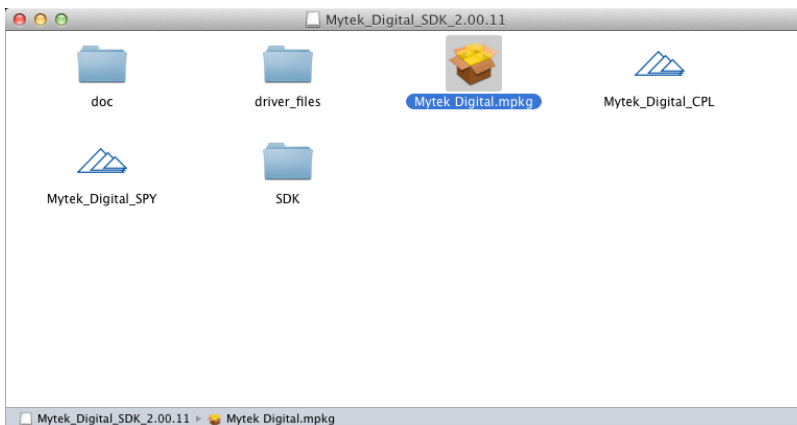
1. Open the **Mytek\_Digital\_SDK\_XXXX.dmg** (ensure you have the latest driver by visiting [mytekdigital.com](http://mytekdigital.com)).



2. Open the **Mytek\_Digital\_SDK\_XXXX** mounted drive.

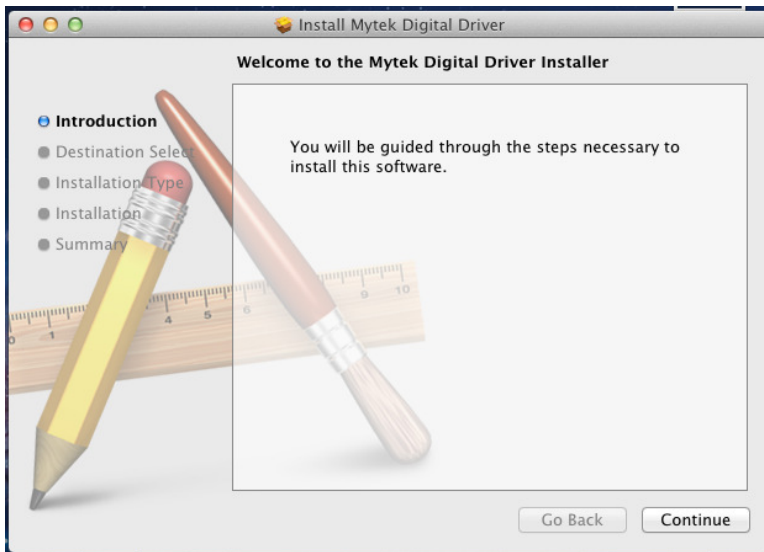


3. Open **Mytek Digital.mpkg**.

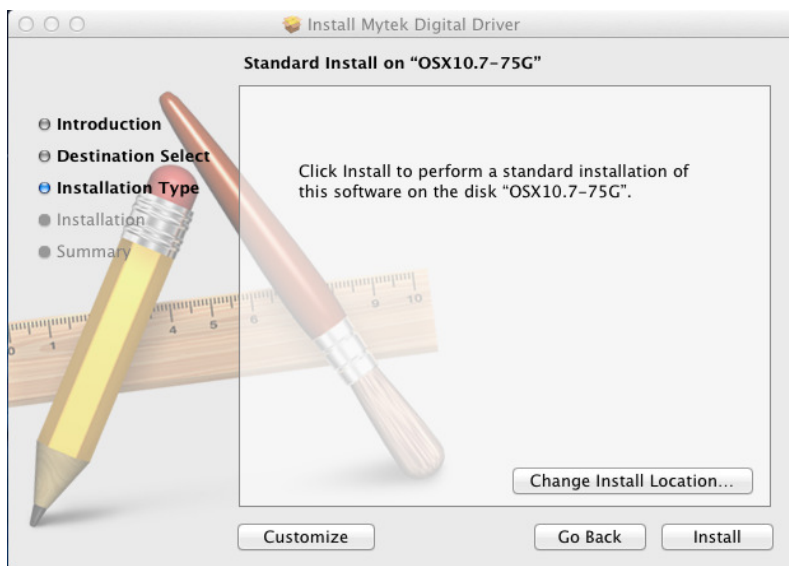




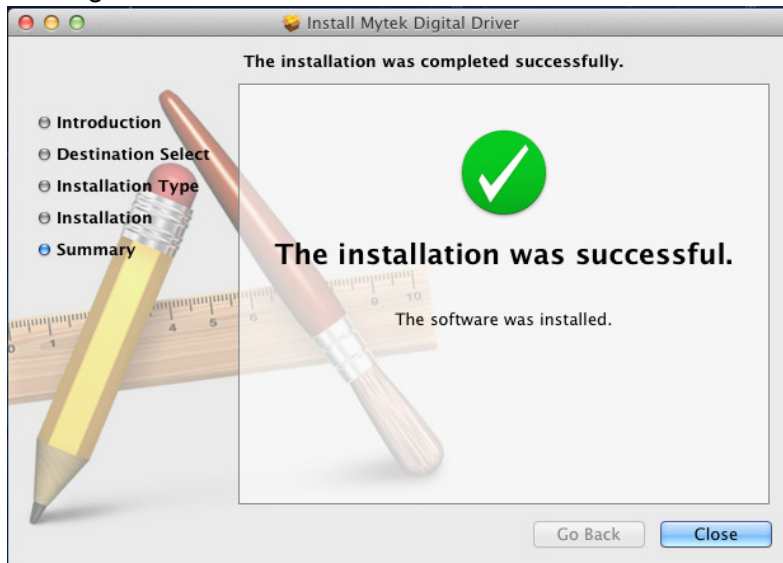
4. Click the **Continue** button in the lower right hand corner.



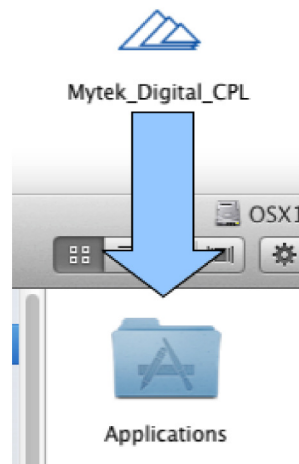
5. Click the **Install** button in the lower right hand corner.



6. Once the installation is complete press the **Close** button in the lower right hand corner.

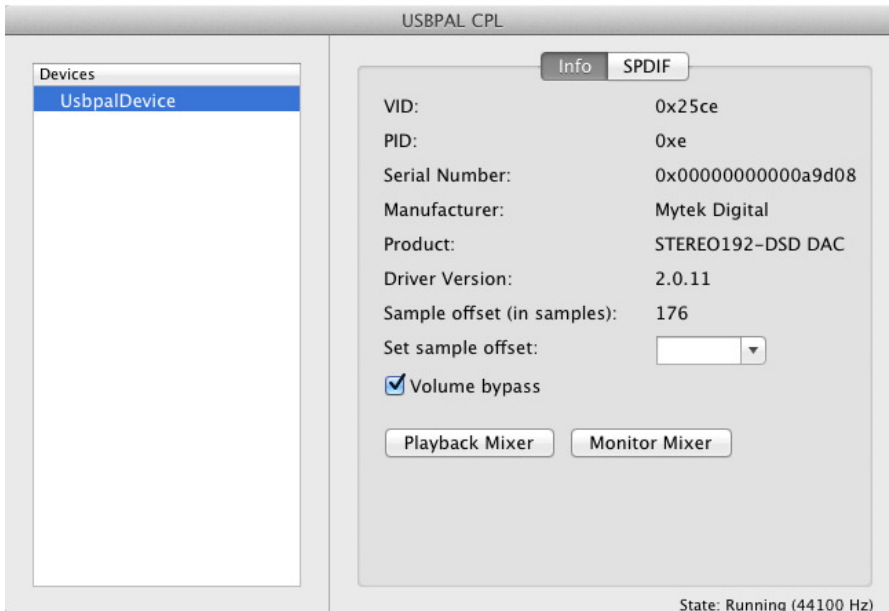


7. Copy the Mytek\_Digital\_CPL inside the Mytek\_Digital\_SDK\_XXXX mounted drive to the Applications folder.

**Note!**

*When reinstalling the Mytek\_Digital\_CPL application you will need to replace the previous application installation.*

8. Open the **Mytek\_Digital\_CPL** and ensure the **Volume Bypass** checkbox is checked.



**Warning! Volume bypass must be checked to guarantee Bit Transparency ensuring proper DSD playback.**

### Uninstalling Mac OS X Mytek USB Driver

- 1) Remove the following files from the folders located on the boot disk (usually Macintosh HD):
  - /Library/Audio/MIDI Drivers/
- 2) Mytek\_Digital.plugin
  - /Library/Receipts
  - com.mytekdigital.Mytek\_Digital.custom-extension-driver.pkg
  - com.mytekdigital.Mytek\_Digital.kernel-driver.pkg
  - com.mytekdigital.Mytek\_Digital.midi-driver.pkg
- 3) /System/Library/Extensions
  - Mytek\_Digital\_CUSTOM\_EXT.kext
  - Mytek\_Digital.kext
- 4) /Applications
  - Mytek\_Digital\_CPL

**Note! If you are experiencing digital artifacts during playback increase the **Set Sample Offset** size inside the USBPAL\_CPL panel to the maximum value.**

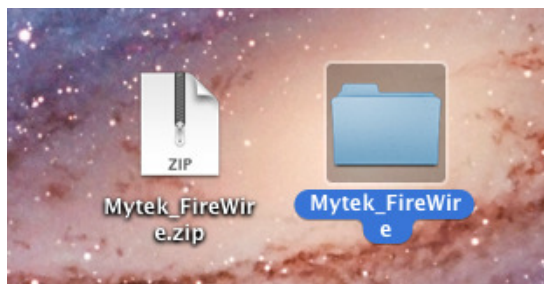
## Mac OS X – FireWire

Use of USB2.0 and Firewire requires prior installation of Mytek drivers on both Win and Mac OS.  
(the latest drivers are available at [mytekdigital.com](http://mytekdigital.com)).

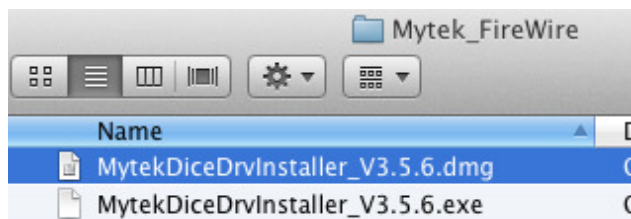
1. Download the latest FireWire driver from  
<http://www.mytekdigital.com>



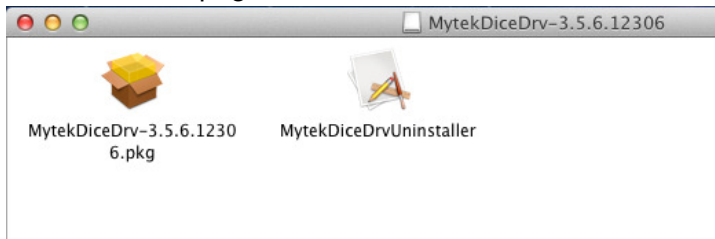
2. Unzip the archive. Most operating systems have this functionality built-in.



3. Once you unzip it, a folder called “binary” will appear. The Disc Image (.dmg) file is inside binary > install > osx > release.



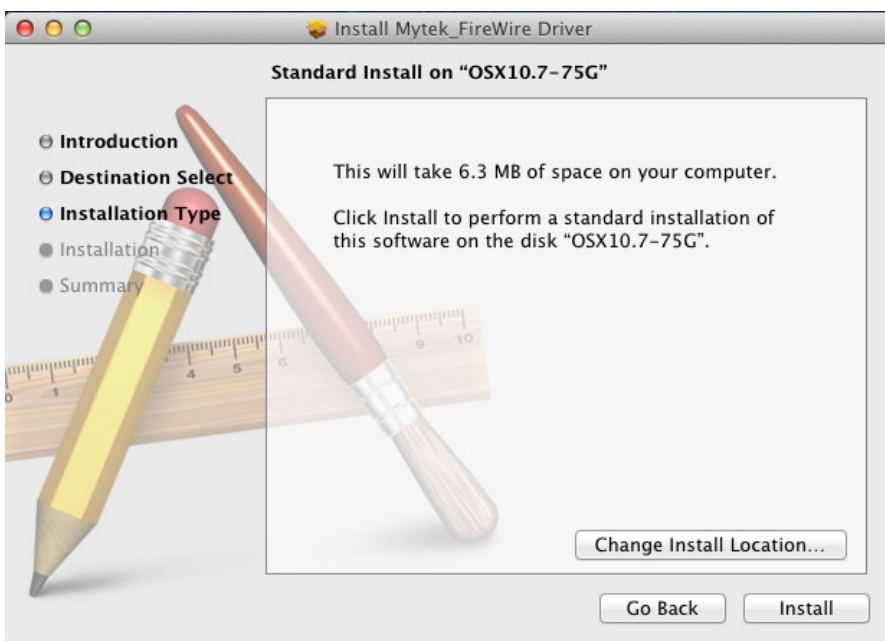
4. Double click the .pkg file to start the driver installation.



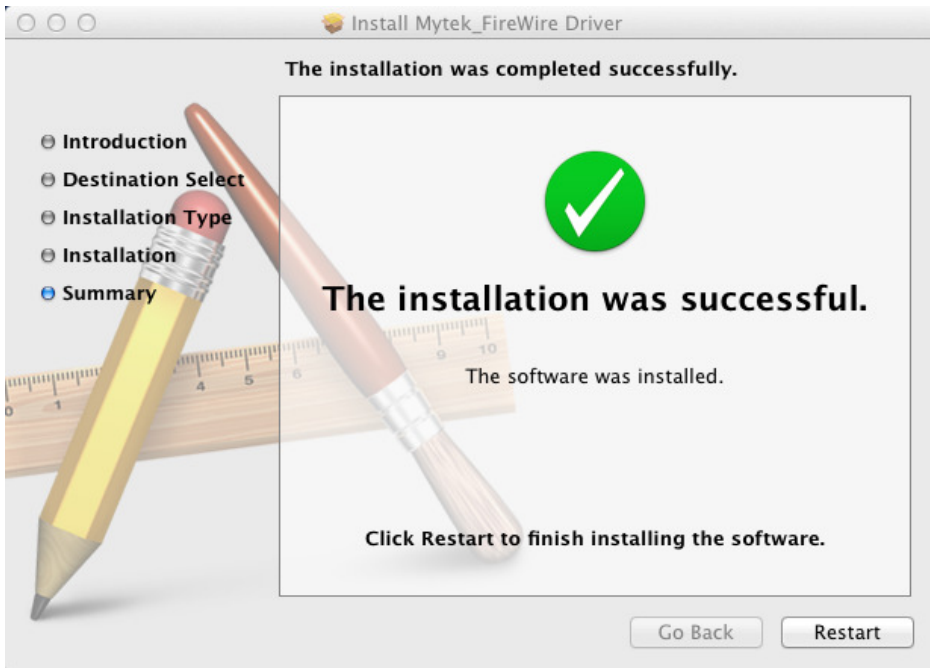
5. Begin the Installation by pressing **Continue**.



6. Select **Install**.



7. Upon Successful installation **Restart** the computer to complete **Mytek FireWire Driver Installation**.

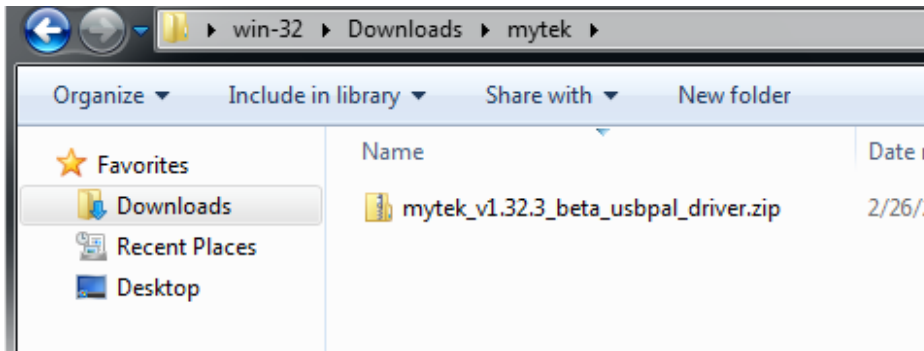


## Windows – USB 2.0

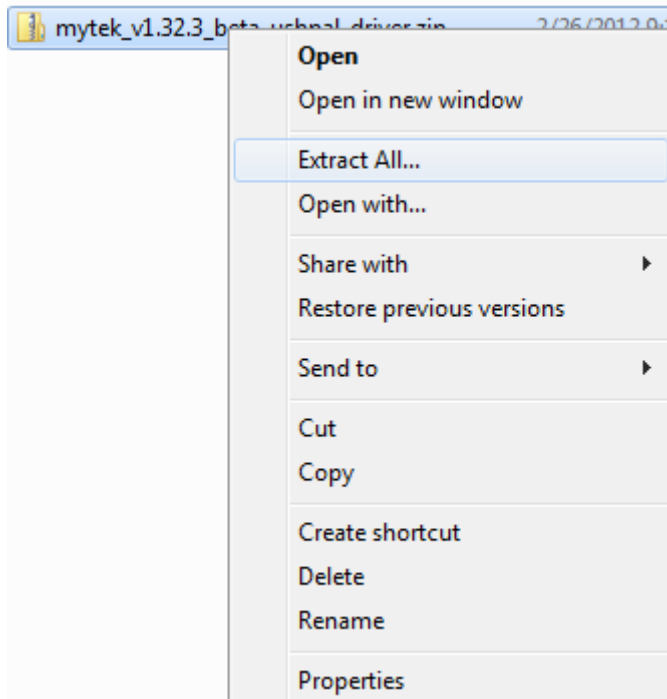
Use of USB2.0 and Firewire requires prior installation of Mytek drivers on both Win and Mac OS.

(the latest drivers are available at [mytekdigital.com](http://mytekdigital.com)).



1. Locate the **mytek\_vXXXX\_usbpal\_driver.zip**:



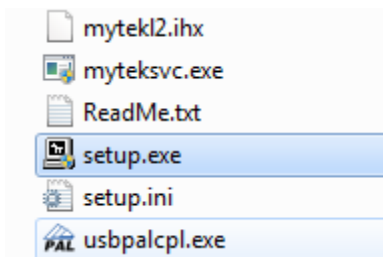
2. Extract the contents of the **mytek.vXXXX\_ usbpal\_driver.zip** installer by right clicking on the installers icon and selecting **Extract All...**



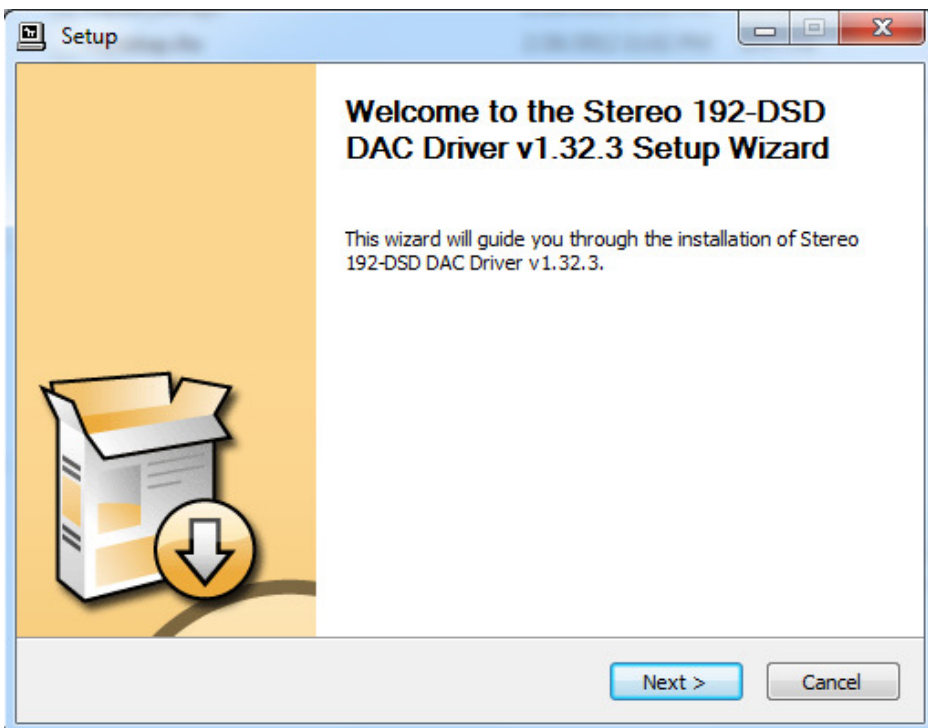
3. Open the Extracted **mytek.vXXXX\_usbpal\_driver** folder.

| Name   | Date modified      | Type                | Size     |
|--|--------------------|---------------------|----------|
|  mytek_v1.32.3_beta_usbpal_driver     | 2/26/2012 11:02 PM | File folder         |          |
|  mytek_v1.32.3_beta_usbpal_driver.zip | 2/26/2012 11:11 PM | Compressed (zipp... | 1,681 KB |

4. Open the **Setup.exe** file found inside the mytek\_vXXXX\_usbpal\_driver folder.

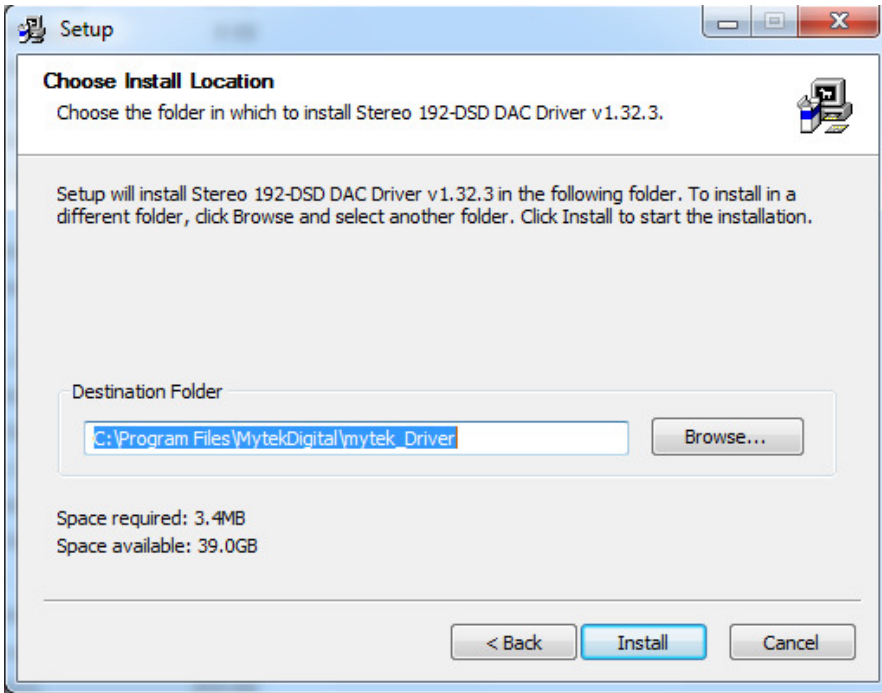


5. Once the **Setup.exe** opens press **Next**.

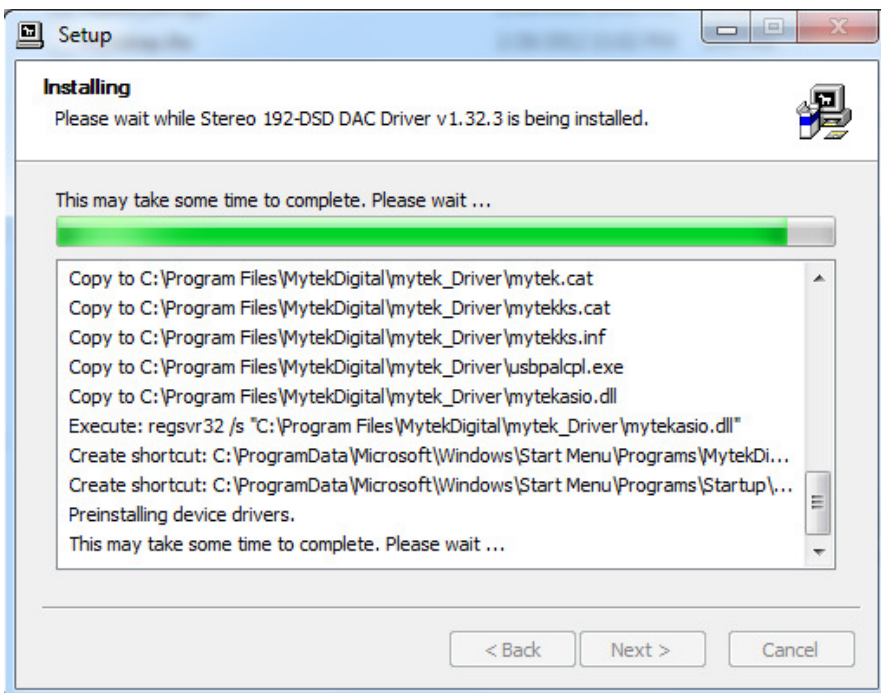




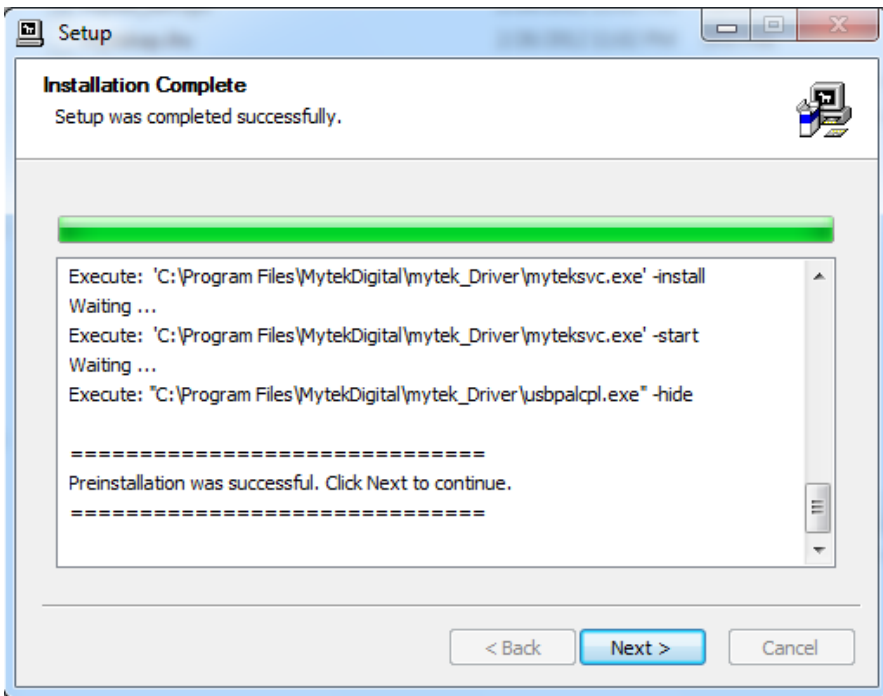
- Choose the location of installation.  
By default it will install in **C:\Program Files\MytekDigital\mytek\_Driver**. We recommend leaving this as is (If you wish to customize the install choose the location by selecting **browse**). Select **Install**.



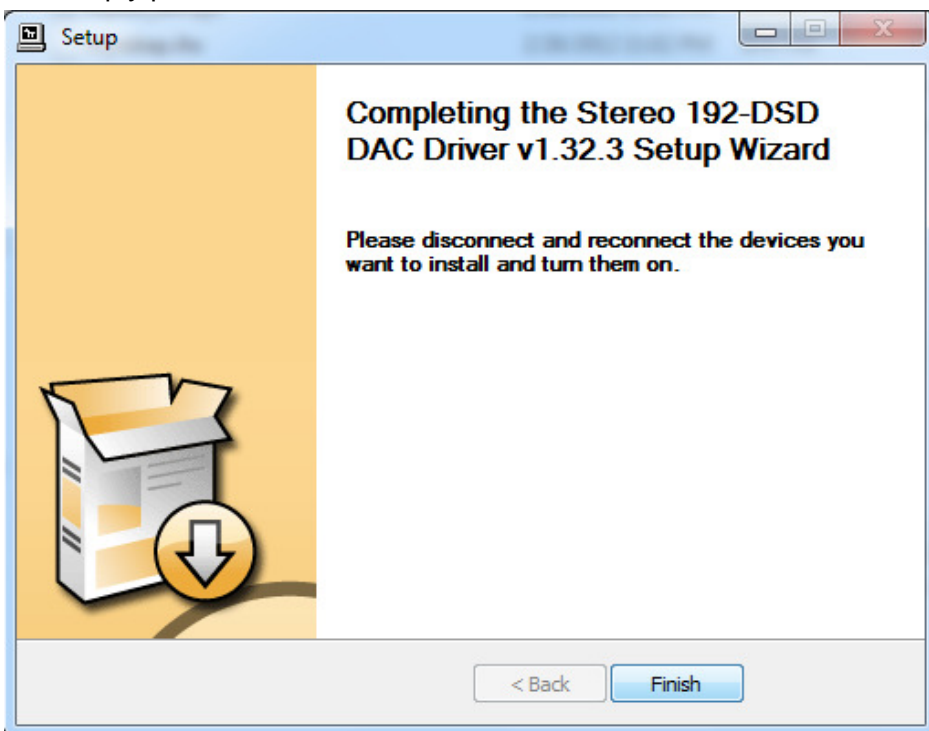
- Setup.exe** will now install the Mytek Driver. This process may take a few minutes.



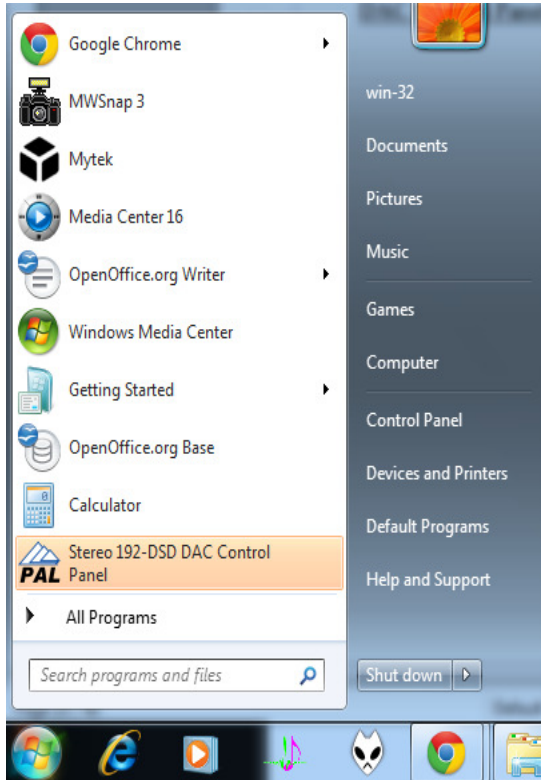
8. Upon completion of **Setup.exe** press the **Next** button.



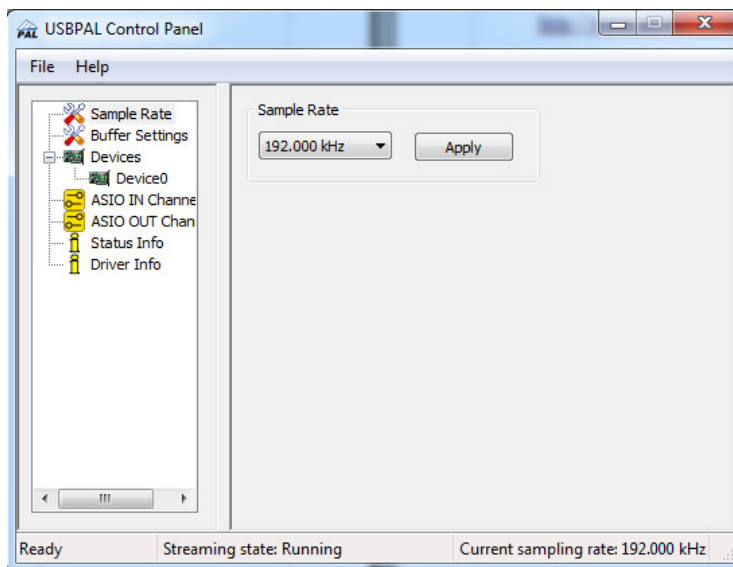
9. To complete installation of the **mytek.vXXXX\_usbpal\_driver** simply press the **Finish** button.



10. Confirm installation by launching the **Stereo 192-DSD DAC Control Panel** from the Start menu.



11. Installation was successful if the **Stereo192-DSD Control Panel** shows a device and permits access to playback options. More than 1 DAC can be connected via USB to use the same driver. For example 3 Mytek DACs can be used for playback of Surround DSD SACDs using for example Jriver Player.

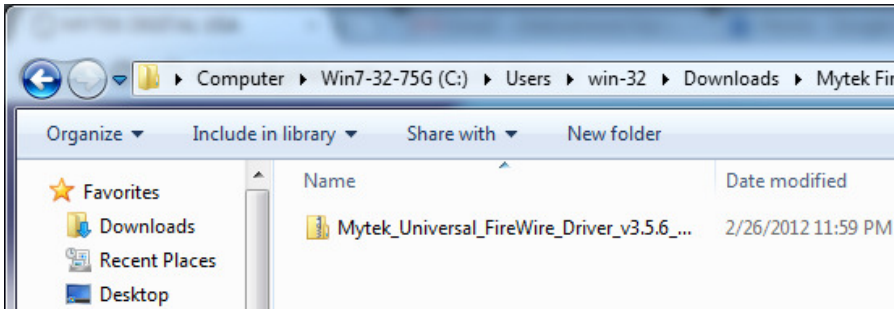


## Windows - FireWire

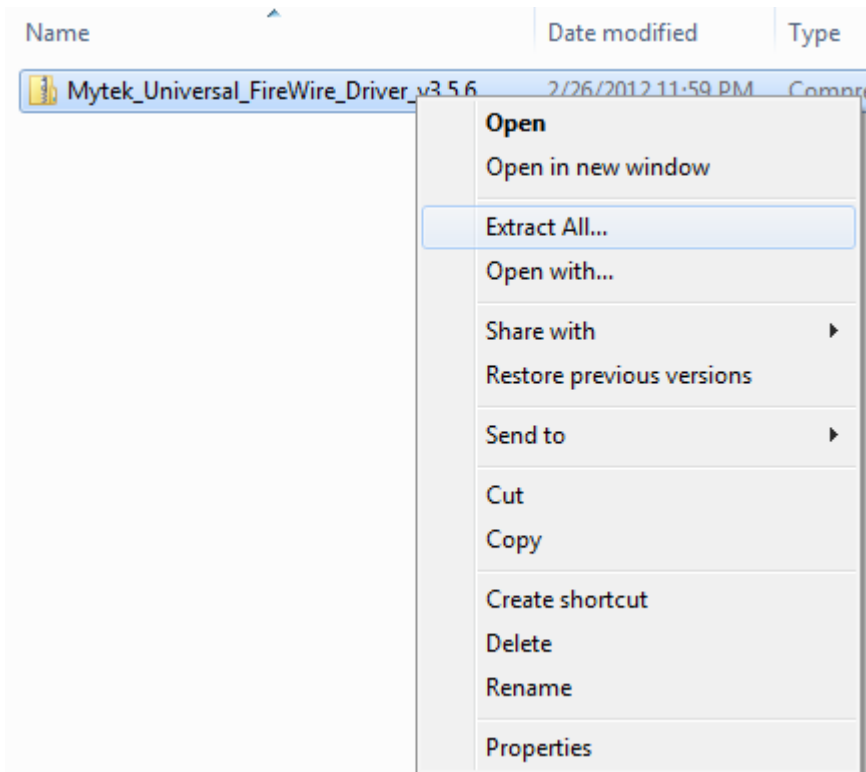
Use of USB2.0 and Firewire requires prior installation of Mytek drivers on both Win and Mac OS.

(the latest drivers are available at [mytekdigital.com](http://mytekdigital.com)).

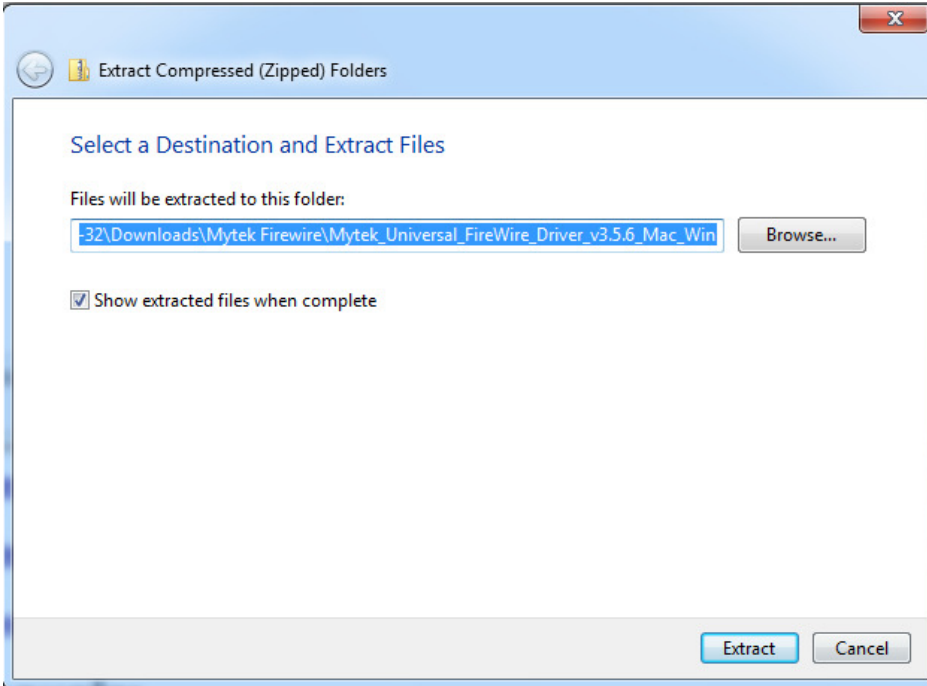
1. Locate the `Mytek_Universal_FireWire_Driver_vXXX.zip`



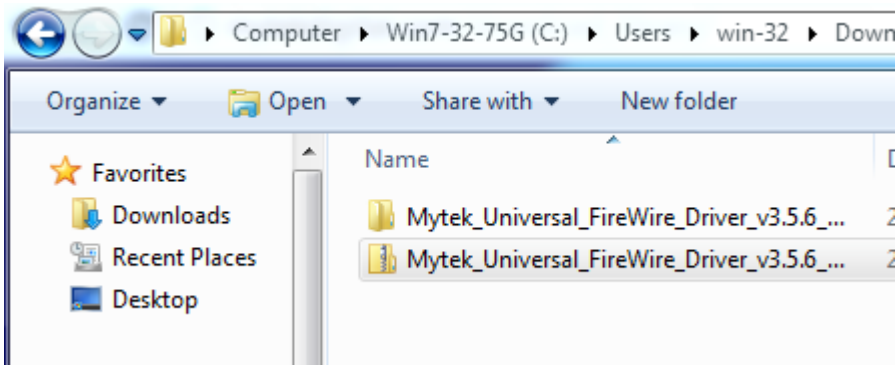
2. Extract the contents of the **Mytek\_Universal\_Firewire\_Driver\_vXXX.zip** installer icon and selecting **Extract All...**



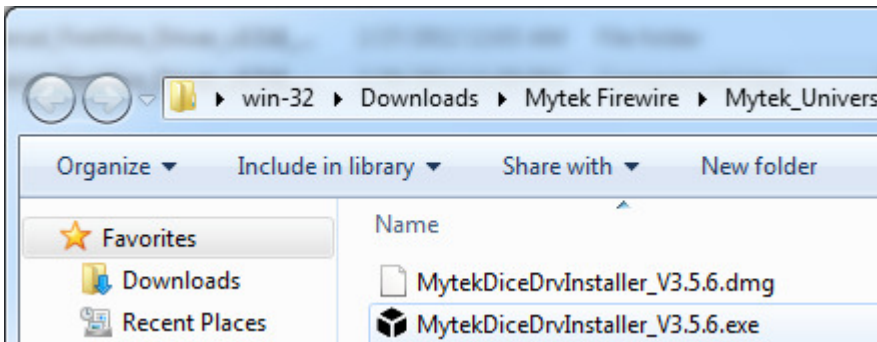
3. Select **Extract** to put the installation folder next to the .zip.



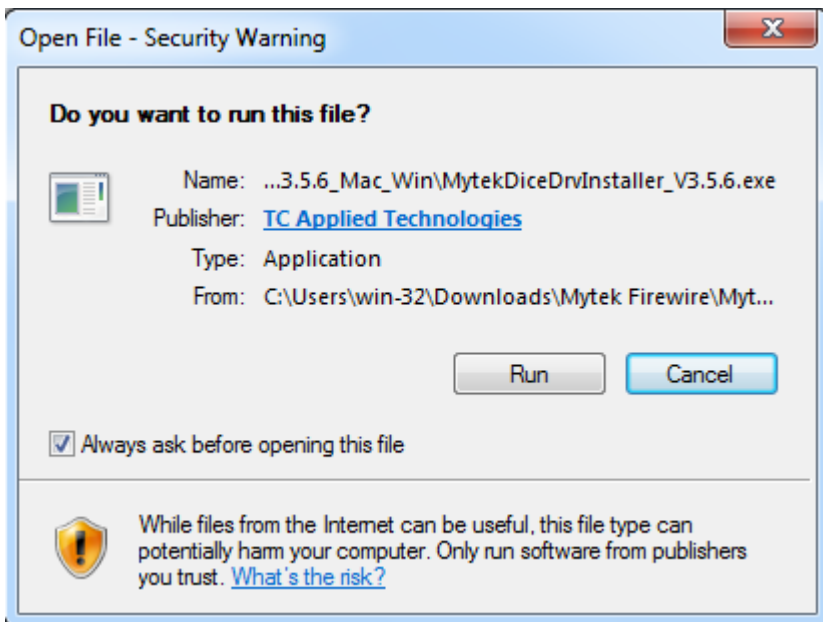
4. Open the extracted Mytek\_Universal\_FireWire\_Driver\_ vXXX folder.



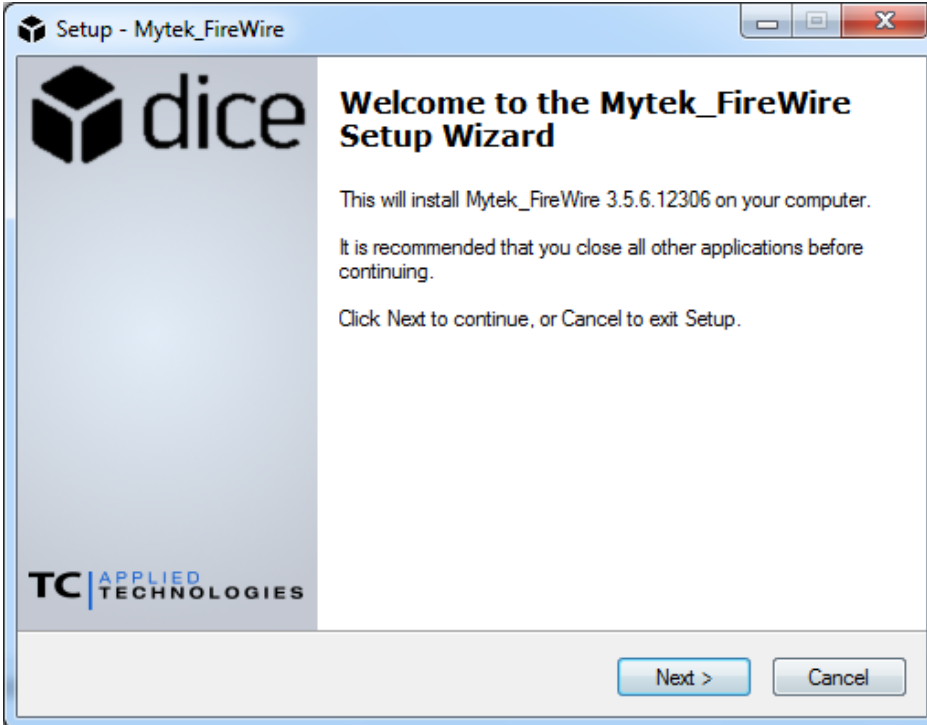
5. Inside the **Mytek\_Universal\_FireWire\_Driver\_vXXX** folder open the MytekDiceDrvInstaller\_vXXX.exe.



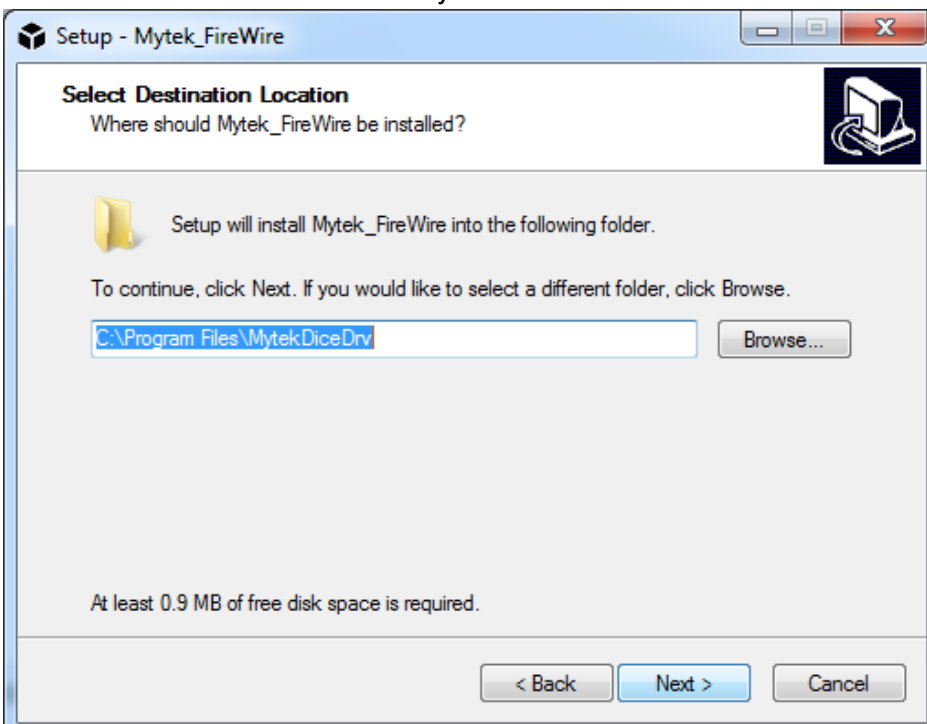
6. If a windows security warning pops up select **Run**.



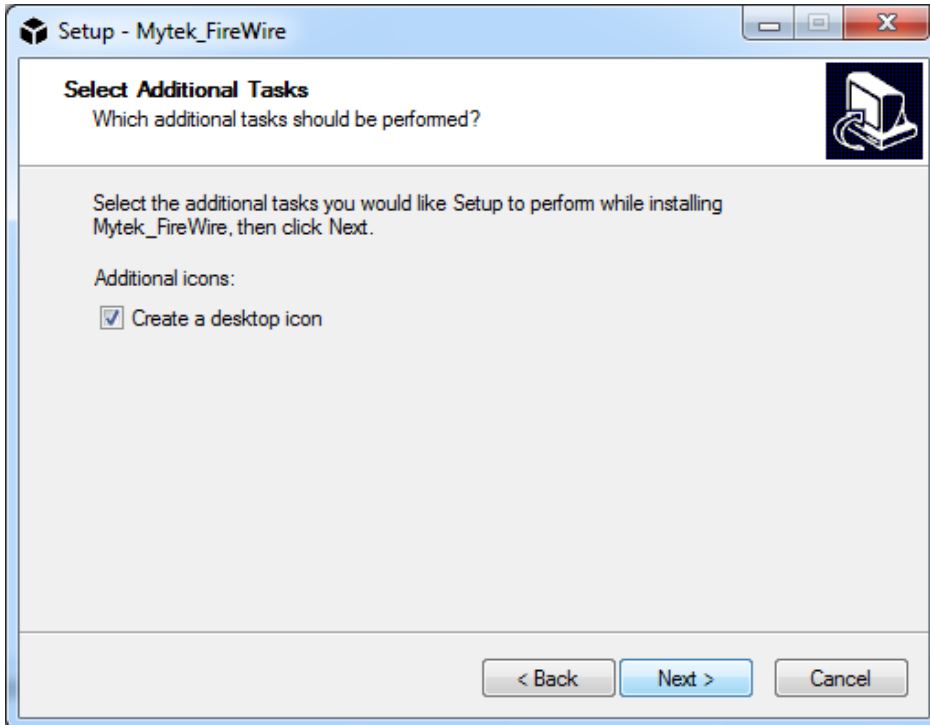
- Once Mytek\_FireWire installer begins select **Next** to begin installation.



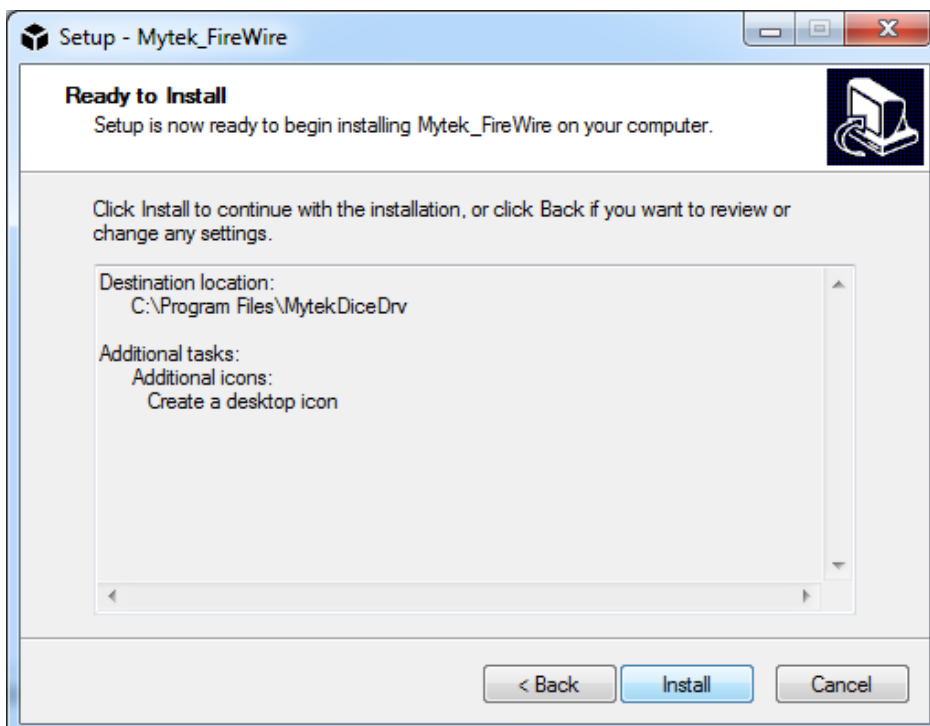
- The **Mytek Firewire Control Panel** is by default installed in the Program Files directory. It is recommended to Use the Default Location. Choose **Next** once you have decided.



9. Choose to create or not create a new desktop Icon for the **Mytek Firewire Control Panel** by checking or Unchecking the **Create a desktop icon** box.



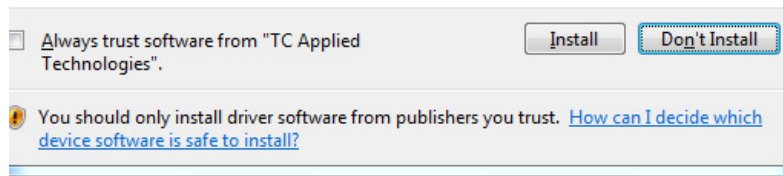
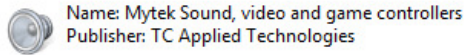
10. Begin installing the **Mytek Firewire Control Panel** by selecting **Install**.



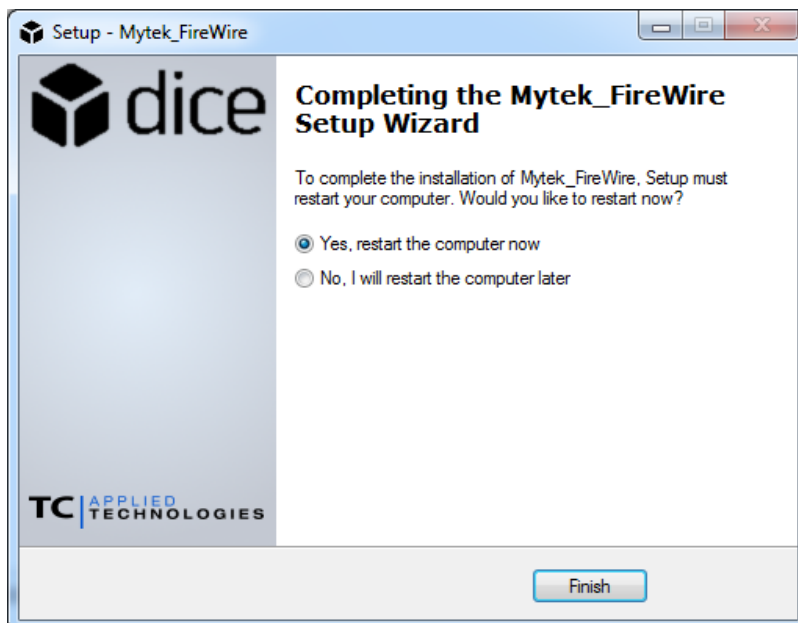


11. If any “**Window's Security Warnings**” appears choose **Install** to continue installation.

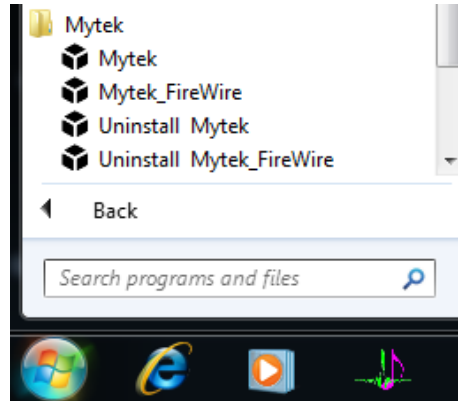
Would you like to install this device software?



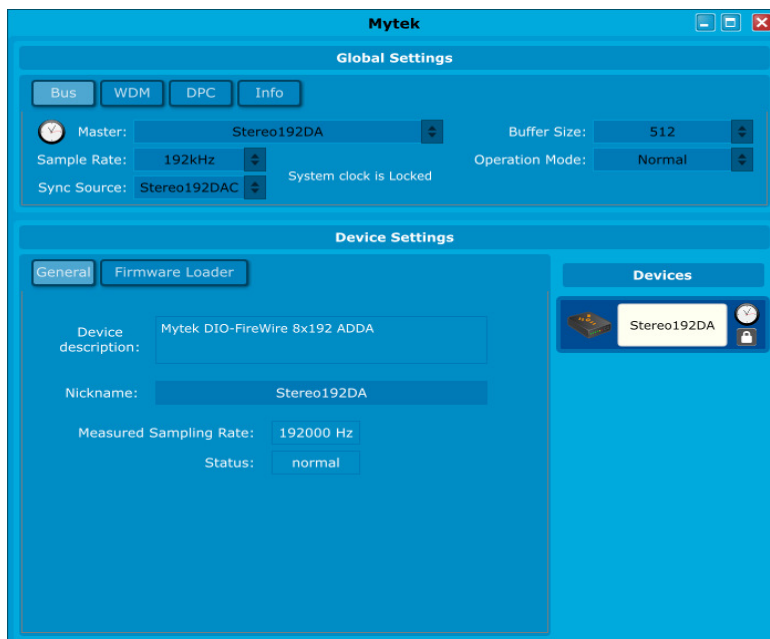
12. Once installation has begun it may take several minutes to complete please be patient until the task completes.
13. Finalize the installation by selecting **Restart**. This will restart your computer and complete the **Mytek\_Universal\_Firewire\_Driver\_vXXX** installation.



14. You can confirm installation by opening the **Mytek\_Firewire** icon located in your **Start** menu.



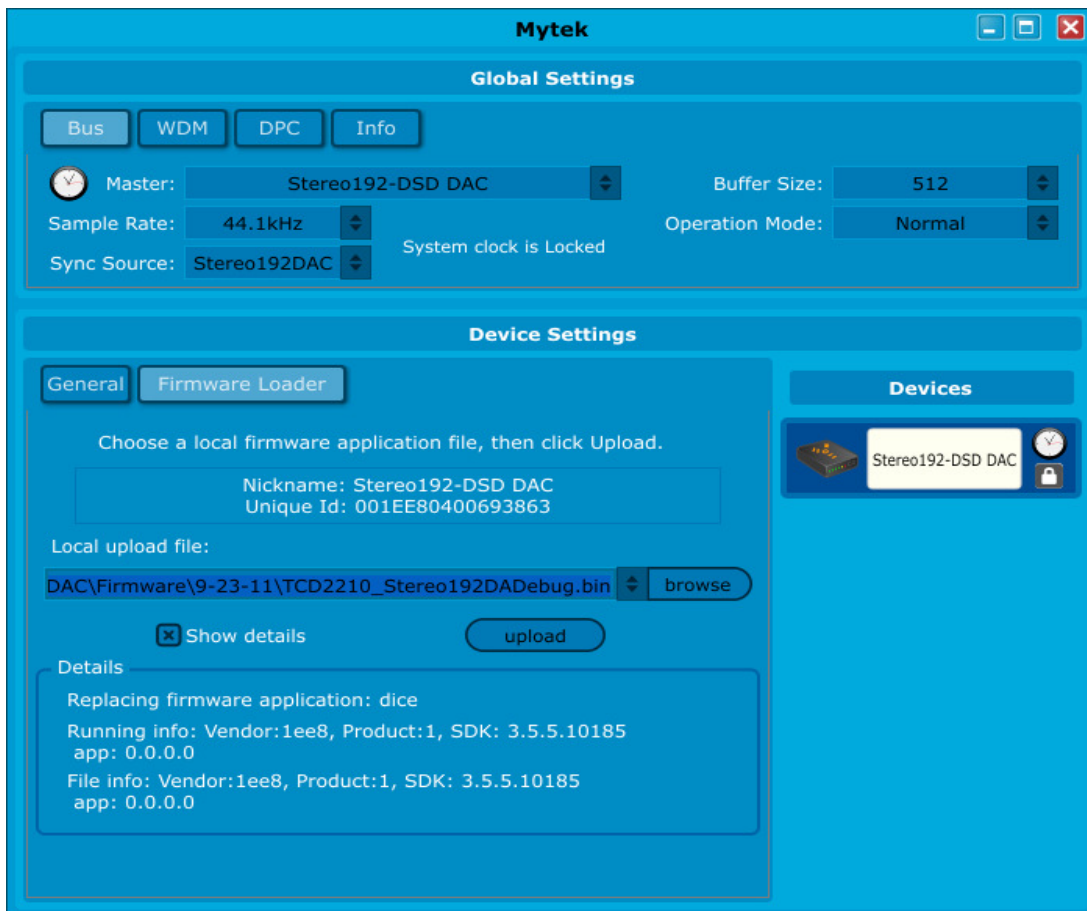
15. Make sure the **Stereo192-DSD DAC** is connected and input is put to **Fire**. If so the **Mytek Control Panel** will say **System Clock Locked**.



## Firmware Update using Windows and OS X

Currently the DAC firmware update requires Firewire connection (cannot be performed via USB). As of Firmware v.1.7.0 a failsafe feature has been added to ensure proper operation following a firmware load failure. If firmware update is interrupted (by power cut for example), the unit will revert to its last firmware. Prior firmware versions are not failsafe and must be loaded safely by shutting down all non essential programs, disconnecting USB1 and USB2 ports and ensuring uninterrupted power to the unit. After Firmware has been loaded the DAC and Computer have to be restarted.

Inside **FireWire control panel**, under **Device Settings** is the **Firmware Loader**. Download the latest **Firmware.bin** file from <http://www.mytek.com>. Browse to the new firmware file and press upload. Once the unit wakes up after the firmware update, power cycle the DAC. Once the DAC has been restarted the firmware update is complete with all setting reverting to default.

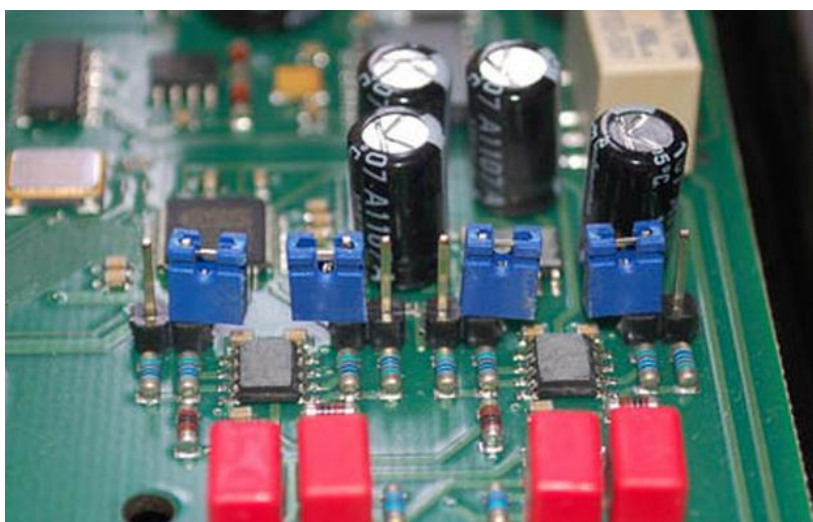
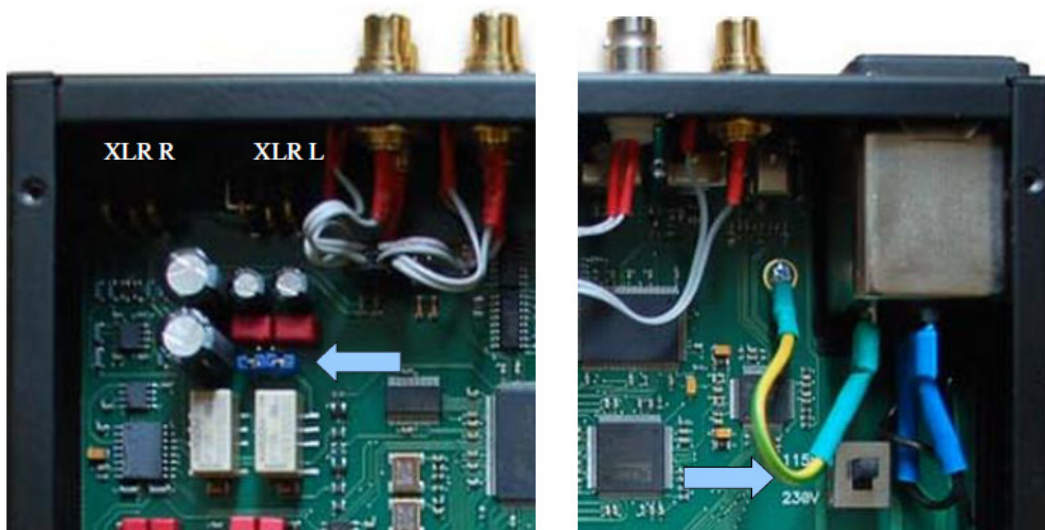


## Internal User Adjustments

Inside the unit you will find the 115/230 voltage switch. Normally this will be set to the proper voltage of the country of purchase. If you need to switch the voltage, it can be found between the power plug socket and the toroidal transformer. The voltage value is printed next to the switch.

\*For Japanese models only: 115V = 100V, 230V = 230V

There are also jumpers which allow bypass of the capacitors in the analog input signal path. Connecting jumpers will extend the low-frequency response to 0 Hz. It will also allow DC to pass. Bypass the capacitors only if you are sure that there is no DC in your signal, as DC can be harmful. The jumpers are located behind the output XLR's.



### Internal -6db Gain Jumpers

These 4 jumpers allow the user to lower the output level of the DAC by -6 db without affecting sound quality. All 4 jumpers must be engaged to ensure proper operation and should only be used when the DAC is clearly overloading the following amplifier stage in the chain.

## Remote Control Setup

The Mytek Stereo192-DSD DAC is infrared remote ready and will work with any Aluminum Apple Remote or any Universal Remote Control using the Philips RC5 standard.

### Stereo192-DSD DAC Apple Remote Setup

1. Press the Menu button
2. Rotate the knob until **Remote** is selected. Press the knob to enter **Remote** menu
3. Rotate the knob until **Enable** is selected. Press the knob to enter **Enable** menu
4. Rotate the knob until **On** is selected. Press the Menu button to turn on **Remote Control**.
5. Rotate the knob until the **Mode** is selected. Press the knob to enter **Mode** menu.
6. Rotate the knob until **Apple** is selected. Press the knob to display **Address Set**. Aim the Aluminum Apple Remote at the Stereo192-DSD DAC and press the silver button at the center of the circle on the Apple Remote until display blinks momentarily.
7. Success the Apple Remote is Paired!

### Stereo192-DSD DAC RC 5 Remote Setup

1. Press the Menu button
2. Rotate the knob until **Remote** is selected. Press the knob to enter **Remote** menu
3. Rotate the knob until **Enable** is selected. Press the knob to enter **Enable** menu
4. Rotate the knob until **On** is selected. Press the **Menu** button to turn on Remote Control.
5. Rotate the knob until **Mode** is selected. Press the knob to enter **Mode** menu
6. Rotate the knob until **RC 5** is selected. Press the knob to enter **RC 5** menu
7. Rotate the knob to select your remote's proper channel, either **00**, **16** or **20**. Press the **Menu** button to set the Address channel.
8. Exit all menus by pressing the **Menu** button until volume and sample rate are visible, this will reactivate the volume knob.

## RC 5 Remote Overview

The Mytek Stereo192-DSD DAC can operate as:

1. TV - address – 00
2. Preamp - address – 16
3. CD - address – 20

In each of these options the remote's **volume up** and **volume down** buttons correspond to turning the Stereo192-DSD DAC's Main knob.

## RC 5 Remote Assignments

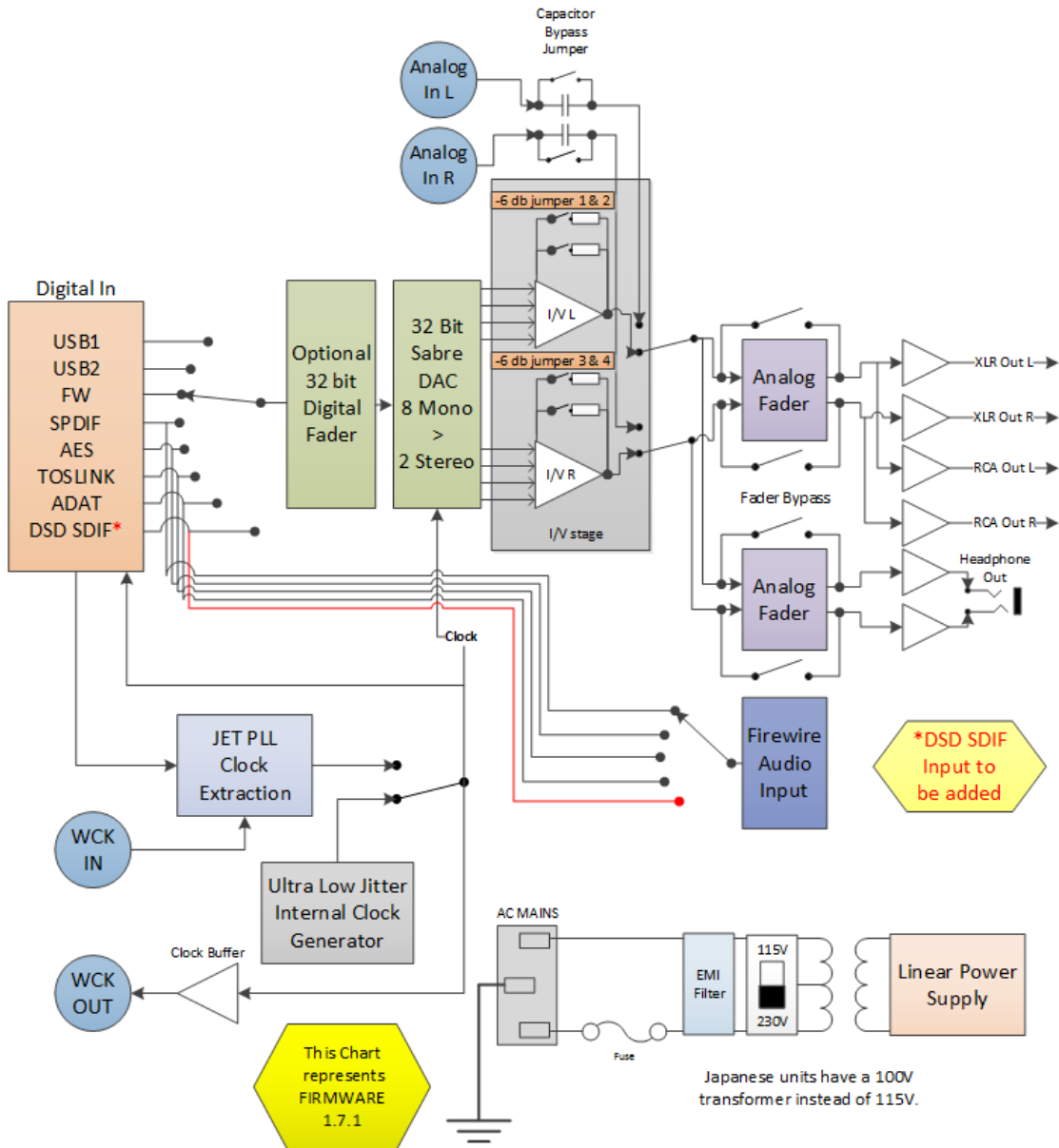
|                            |                |
|----------------------------|----------------|
| "vol_up" - vol knob right  | (command - 16) |
| "vol_down" – vol knob left | (command - 17) |
| "1" - press "menu"         | (command - 01) |
| "2" - press "FN1"          | (command - 02) |
| "3"- press "FN2"           | (command - 03) |
| "4" menu knob left         | (command - 04) |
| "5" - press knob           | (command - 05) |
| "6" - menu knob right      | (command - 06) |

## Troubleshooting

### Remote control does not work.

| Possible cause  | Suggested solution   |
|---|--|
| Device not programmed.  | Rotate the device's knob to select your remote's proper channel, either 00, 16 or 20.  |
| Incorrect remote control.   | Try other remote control. This device works with any Aluminum Apple Remote or any Universal Remote Control using the RC5 standard. |
| Remote control is too far from the device.                        | Move closer to the device.   |
| Something is blocking the receiver.                               | Remove items which may be blocking the receiver.   |
| Batteries are getting low or are dead.                            | Replace the batteries.   |
| Remote control is not functioning despite changing the batteries. | Repair or replace the remote control.  |

## Signal Flow





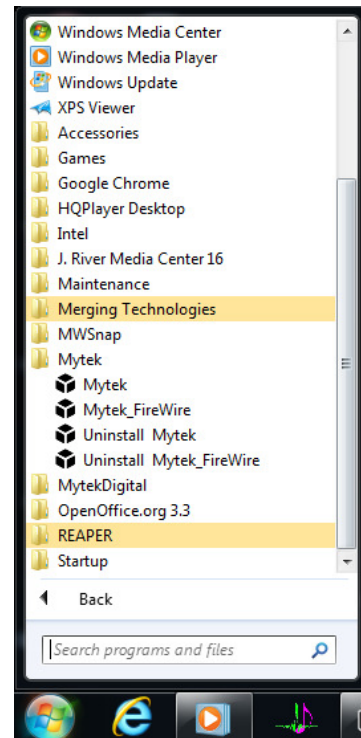
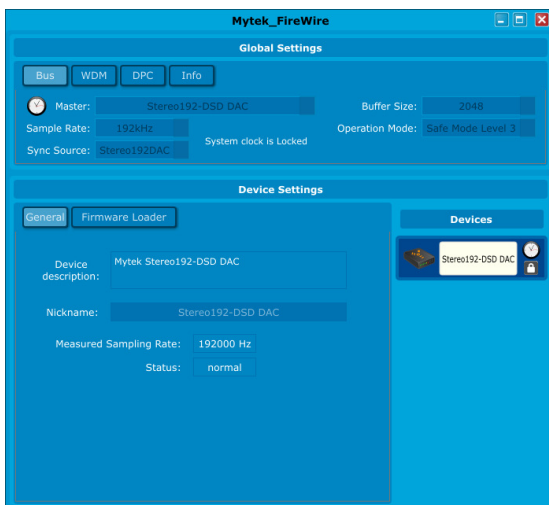
## FireWire Recording

The **Stereo192-DSD DAC** has the unique ability to operate as a 2 channel Firewire Audio Interface for Both MAC and PC.

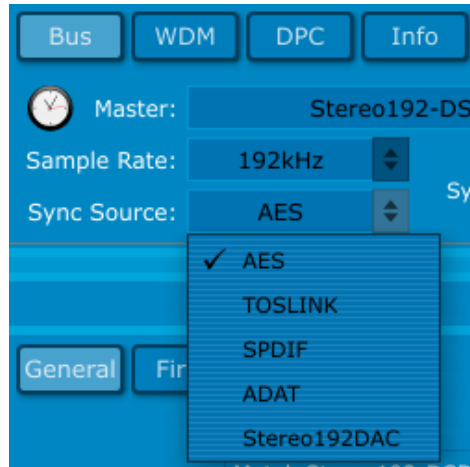
Connecting a stand-alone stereo analog digital converter such as the **MYTEK Stereo192 ADC** via **AES/EBU, S/PDIF, TOSLINK** or **ADAT** allows the passing of digital audio through the DAC into any DAW or archival software. For example Mytek Stereo192ADC Analog to Digital converter paired with programs such as Channel D's Pure Vinyl or Sonic Vinyl will allow you to transfer and instantly playback your Vinyl Library through the **Stereo192-DSD DAC**'s digital inputs and analog outputs.

### Windows FireWire Recording Setup

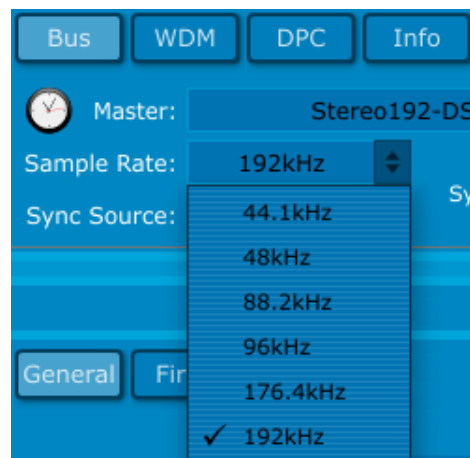
1. Change the **MYTEK Stereo192-DSD DAC** input setting to **FireWire**.
  - Press the Menu button
  - Rotate the knob until **INPUT** is selected
  - Press the knob
  - Rotate the knob until **Fire** is selected
  - Press the Menu button twice
2. Connect to the appropriate Digital Source to the Digital inputs on the **Stereo192-DSD DAC** via **AES/EBU, S/PDIF, TOSLINK, or ADAT**.
3. On the Digital Source select or make note of the desired Sample Rate feeding the **MYTEK Stereo192-DSD DAC**.
4. Locate and click the Mytek\_FireWire.exe located in the Start Menu > All Programs > Mytek Folder > Mytek\_FireWire.



5. Under the **Bus Tab** inside the Mytek\_FireWire control panel switch Sync Source: to the Digital format you are using i.e. **AES/EBU, S/PDIF, TOSLINK, ADAT**.



6. Under the Bus Tab inside the Mytek\_FireWire control panel switch Sample Rate: to match the Digital Source feeding the **MYTEK Stereo192-DSD DAC**.

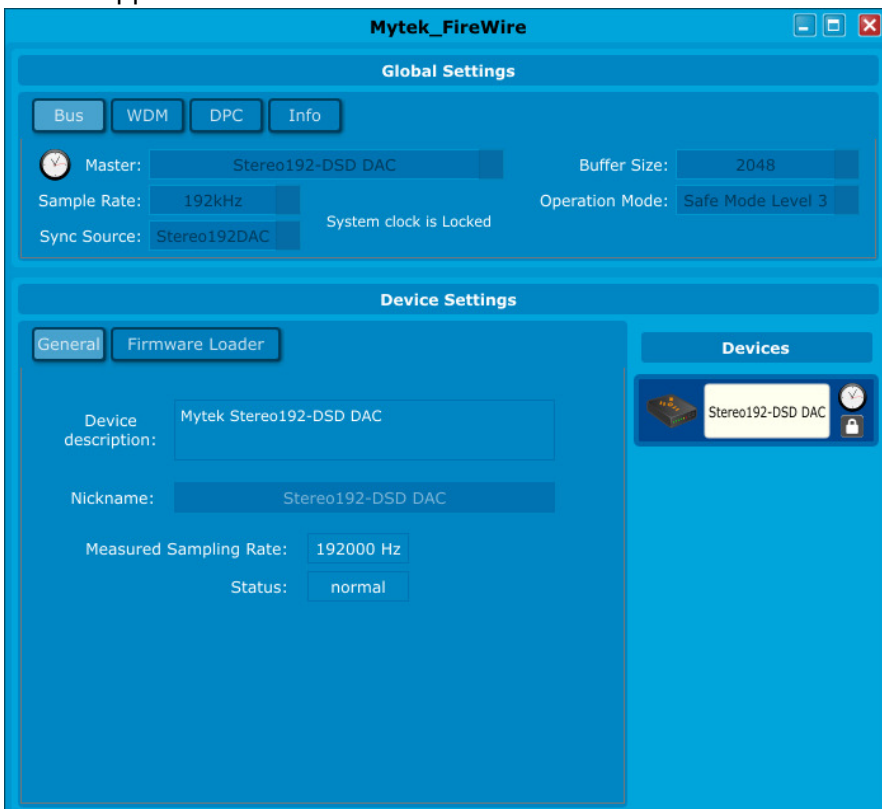


7. Open your DAW or Archiving Software and select the **MYTEK Stereo192-DSD DAC FireWire** as your input source and output.
8. Change the DAW or Archival Software's Sample Rate to match both the **Mytek\_Firewire Control Panel** as well as the Digital Source connected.

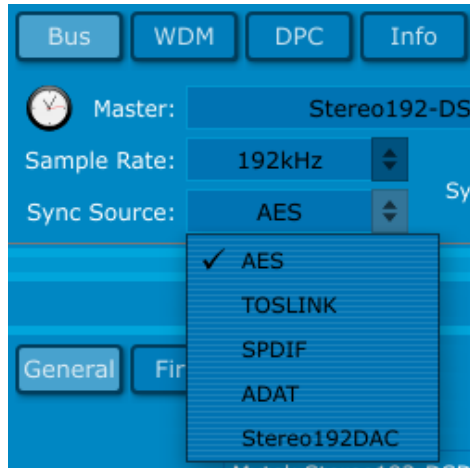
You are now ready to stream Digital audio through the **MYTEK Stereo192-DSD DAC** into your computer.

## OS X FireWire Recording Setup

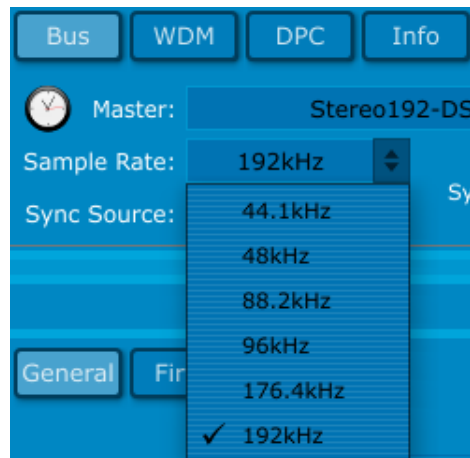
1. Change the **MYTEK Stereo192-DSD DAC** input setting to **Firewire**.
  - Press the Menu button
  - Rotate the knob until **INPUT** is selected
  - Press the knob
  - Rotate the knob until **Fire** is selected
  - Press the Menu button Twice
2. Connect to the appropriate Digital Source to the Digital inputs on the **Stereo192-DSD DAC** via **AES/EBU, S/PDIF, TOSLINK, or ADAT**.
3. On the Digital Source select or make note of the desired Sample Rate feeding the **MYTEK Stereo192-DSD DAC**.
4. Locate and click the **Mytek Dice Drv Control Panel** located in the applications folder.



- Under the **Bus Tab** inside the Mytek\_FireWire control panel switch Sync Source: to the Digital format you are using i.e. **AES/EBU, S/PDIF, TOSLINK, ADAT.**



- Under the **Bus Tab** inside the Mytek\_FireWire control panel switch Sample Rate: to match the Digital Source feeding the **MYTEK Stereo192-DSD DAC.**



- Open your DAW or Archiving Software and select the **MYTEK Stereo192-DSD DAC FireWire** as your input source and output.
- Change the DAW or Archival Software's Sample Rate to match both the **Mytek Dice Drv Control Panel** as well as the Digital Source connected.

You are now ready to stream Digital audio through the **MYTEK Stereo192-DSD DAC** into your computer.

## Specifications

- Conversion: 32bit, PCM up to 192k, 64xDSD, 128xDSD.
- Dynamic Range: 128dB (ESS Sabre chipset in 8 mono to 2 stereo config.) THD DAC: -110dB.
- Digital Audio Inputs: SPDIF, AES/EBU, Toslink all up to 192k single wire. (64xDSD and 128xDSD SDIF DSD interface on Mastering Version).
- Clock: Internal Clock Generator (10ps jitter,) Wordclock In and Out, or sync to incoming digital audio input with low jitter JET (tm) PLL.
- Internal Async Hardware Upsampling- 16bit 44.1k etc. can be optionally upsampled prior to conversion to 192k/24bit with clock jitter eliminated.
- Transparent, 1dB stepped programmable analog attenuator, separate for main out and headphones.
- Relay bypass of the attenuator for direct purist DAC out.
- A pair of unbalanced RCA analog ins for preamp functions (assignable to volume control) (In Preamp Version).
- High Current, High Slew Rate ultra low distortion 500mA hi-fi headphone amp.
- Worldwide user switchable linear power supply.
- Online downloadable firmware updates.
- Ability of converting standard digital audio inputs into computer FW/USB input.
- Optional infrared remote (avail 2012).
- Enclosure: Compact portable 1/2 rack space 1.72in H x 8.5in W x 8.5in D.
- Weight 6 lbs.

### User Menu Choices:

- Functions assignable to buttons: MUTE, PHASE INVERT, MONO, (L-R), M/S, DIM.
- Selection of clock choices.
- Choice of upsampling or not.
- Selection of slow or fast/steep filter for PCM.
- Selection of 3 filters for out of band DSD.
- Assignable input selection (display only active).
- Dimmable intensity of display/led meter.

## Important Safety Information

- Read these instructions.
- Keep these instructions.
- Heed all warnings.
- Follow all instructions.
- Do not use this apparatus near water.
- Clean only with dry cloth.
- Do not block any ventilation openings. Install in accordance with the manufacturer's instructions.
- Do not install near any heat sources such as radiators, heat registers, stoves, or other apparatus (including amplifiers) that produce heat.
- Do not defeat the safety purpose of the polarized or grounding-type plug. A polarized plug has two blades with one wider than the other. A grounding-type plug has two blades and a third grounding prong. The wide blade or the third prong are provided for your safety. If the provided plug does not fit into your outlet, consult an electrician for replacement of the obsolete outlet.
- Protect the power cord from being walked on or pinched particularly at plugs, convenience receptacles, and the point where they exit from the apparatus.
- Only use attachments/accessories specified by the manufacturer.
- When a cart is used, use caution when moving the cart/apparatus combination to avoid injury from tip-over.
- Unplug this apparatus during lightning storms or when unused for long periods of time.
- Refer all servicing to qualified service personnel. Servicing is required when the apparatus has been damaged in any way, such as power-supply cord or plug is damaged, liquid has been spilled or objects have fallen into the apparatus, the apparatus has been exposed to rain or moisture, does not operate normally, or has been dropped.

## Warning

Excessive sound pressure from speakers and headphones can cause hearing loss. In order to use this product safely, avoid prolonged listening at excessive sound pressure levels.

For the customers in the U.S.A.

This equipment has been tested and found to comply with the limits for a Class A digital device, pursuant to Part 15 of the FCC Rules. These limits are designed to provide reasonable protection against harmful interference when the equipment is operated in a commercial environment. This equipment generates, uses, and can radiate radio frequency energy and, if not installed and used in accordance with the instruction manual, may cause harmful interference to radio communications.

You are cautioned that any changes or modifications not expressly approved in this manual could void your authority to operate this equipment.

All interface cables used to connect peripherals must be shielded in order to comply with the limits for a digital device pursuant to Subpart B of Part 15 of FCC Rules.

This device complies with Part 15 of the FCC Rules. Operation is subject to the following two conditions: (1) this device may not cause harmful interference, and (2) this device must accept any interference received, including interference that may cause undesired operation.

This product with the CE marking complies with the EMC Directive issued by the Commission of the European Community. Compliance with this directive implies conformity to the following European standards:

- EN55103-1 : Electromagnetic Interference (Emission)
- EN55103-2 : Electromagnetic Susceptibility (Immunity)

This product is intended for use in the following Electromagnetic Environments: E1 (residential), E2 (commercial and light industrial), E3 (urban outdoors), E4 (controlled EMC environment, ex. TV studio).

## Warranty

This Stereo192-DSD-DAC is warranted by Mytek to the original purchaser against defects in workmanship and materials used in manufacture for a period of **two years** from the date of purchase. Faults due to customer misuse, unauthorized modifications or accidents are not covered by this warranty.

No other warranty is expressed or implied.

Any faulty unit should be sent, shipping prepaid to the manufacturer service center. Prior to shipping the client should obtain an RMA# from Mytek for warranty services. Units sent without RMA# will not be accepted.

Mytek extends affordable repair service for all units manufactured to date that are not covered by this Warranty. **Mytek repair centers are located in Brooklyn, New York at Mytek Headquarters and in Warsaw, Poland (at Mytek EU office).**

## Information on Disposal for Users of Waste Electrical & Electronic Equipment (private households)

The Wheelie Bin symbol on the products and/or accompanying documents means that used electrical and electronic products should not be mixed with general household waste. Disposing of this product correctly will help save valuable resources and prevent any potential negative effects on human health and the environment.

To properly dispose harmful substances and recycle the product, the user is obliged to return it at the point of collection of electrical and electronic equipment waste. For more information please contact your local authorities, waste disposal units or retailer.

