

IBK 2513

Large Interview Kit Package



What's included

- 2 x IB500 LED Light
- 1 x iLED 312 LED Light
- 3 x Light Stands
- 1 x IBG-500-3L Light Kit bag

QuickStart Guide:

- IB500 LED Light QSG
- iLED 312 LED Light QSG

Checked by

CONDITIONS OF WARRANTY SERVICE

- Free service for one year from the day of purchase if the problem is caused by manufacturing errors.
- The components and maintenance service fee will be charged if the warranty period has expired.

Free Service will not be Provided in the Following Situations: (* Even if the product is still within the warranty period.)

- Damage caused by abuse or misuse, dismantling, or changes to the product not made by the company.
- Damage caused by natural disaster, abnormal voltage, and environmental factors etc.

IB 500

L.E.D. Light QUICKSTART GUIDE



What's included

- IB 500 Light
- AC Adapter + Power Cord
- Remote Control

Checked by

CONDITIONS OF WARRANTY SERVICE

- Free service for one year from the day of purchase if the problem is caused by manufacturing errors.
- The components and maintenance service fee will be charged if the warranty period has expired.

Free Service will not be Provided in the Following Situations: (* Even if the product is still within the warranty period.)

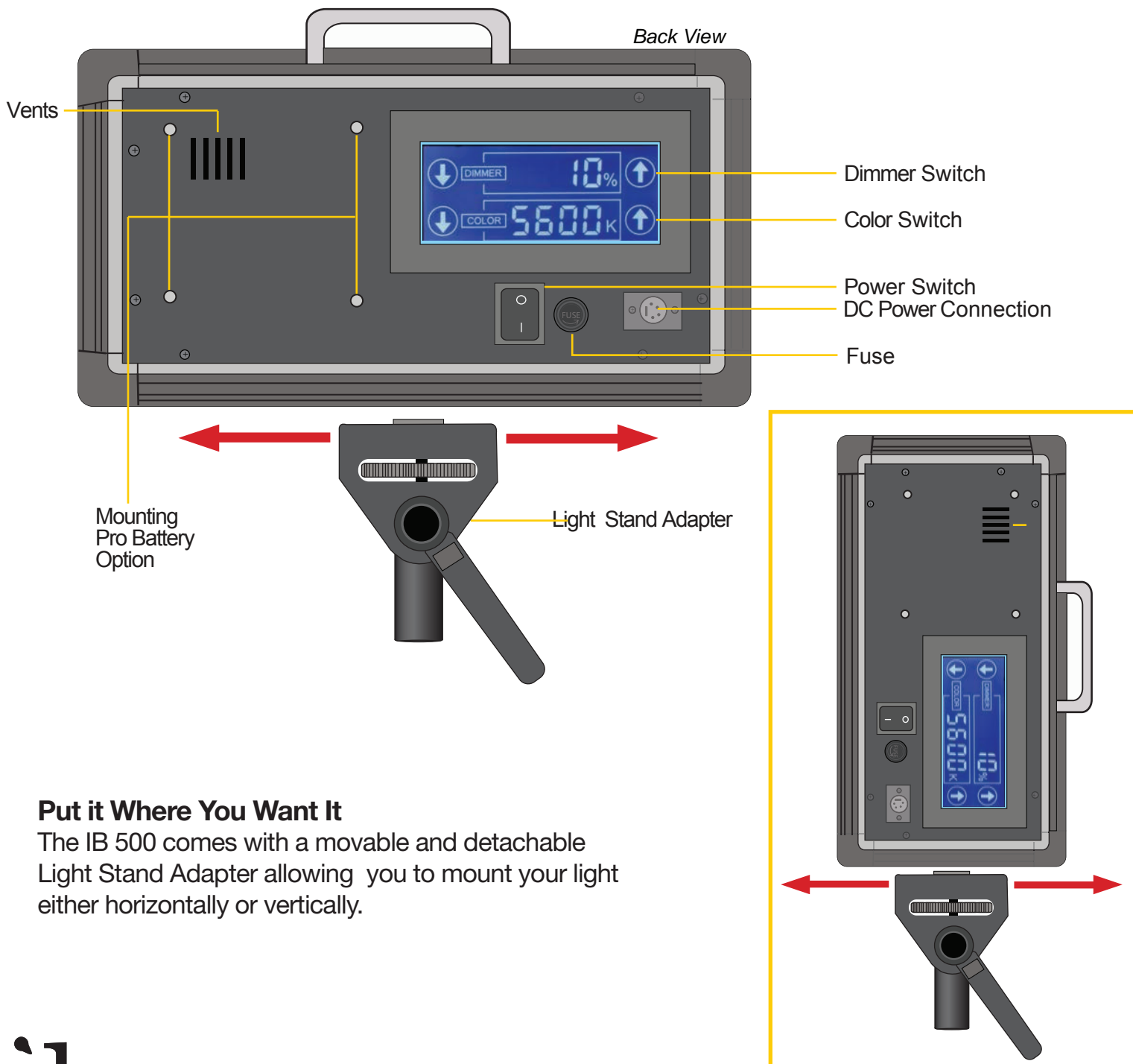
- Damage caused by abuse or misuse, dismantling, or changes to the product not made by the company.
- Damage caused by natural disaster, abnormal voltage, and environmental factors etc.

IB 500

L.E.D. Light QUICKSTART GUIDE

GETTING STARTED

1. Connect the included AC Adapter to power the IB 500 light.
2. Turn the light on / off with the Power Switch.
3. Control the amount of the light with the Dimmer knob. Adjust the intensity of the light by turning the Dimmer Knob clock-wise to increase the intensity and counter clock-wise to reduce it.
4. The IB 500 can also be powered by pro battery (optional accessories).



Put it Where You Want It

The IB 500 comes with a movable and detachable Light Stand Adapter allowing you to mount your light either horizontally or vertically.

ikan

www.ikancorp.com

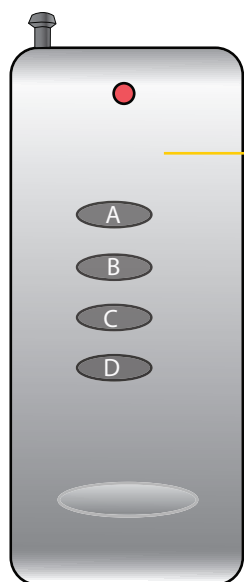
713-272-8822

IB 500

L.E.D. Light QUICKSTART GUIDE

SPECIFICATIONS

Operating Volts:	12v - 14.4v
Wattage:	30w
Brightness:	2.55Klux/50cm
Color Temperature:	5600K
Dimension:	13.8" x 7.5" x 2.7"
Weight (lbs):	5.8



Operation
Indicator
On/Off

Remote Control Buttons

A. Power On/Off

Press and hold for 5 seconds to sync remote control to light.

B. Press button to adjust 4 levels of light intensity.

Press and hold for 5 seconds to enable/disable sound.

C. Hold down to increase light intensity

D. Hold down to decrease light intensity

• Pro Battery Option



Optional Accessories

- V17PBK-S Pro Battery Kit \$149.00
- V17PBK-A Pro Battery Kit \$149.00
- IB-L130A AB Mount Professional Battery \$375.00
- IB-L130S V Mount Professional Battery \$375.00

ikan

www.ikancorp.com

713-272-8822

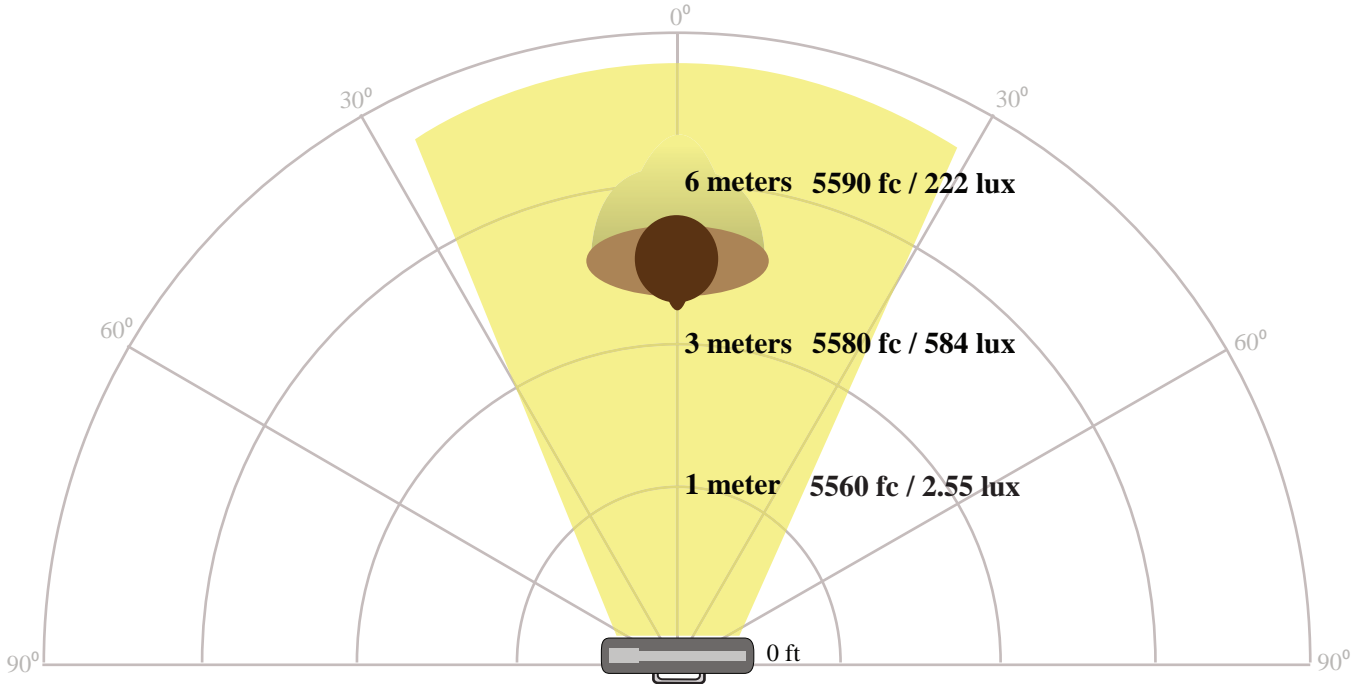
IB 500

L.E.D. Light QUICKSTART GUIDE

IB 500 LUX Drop Off

The right amount of light

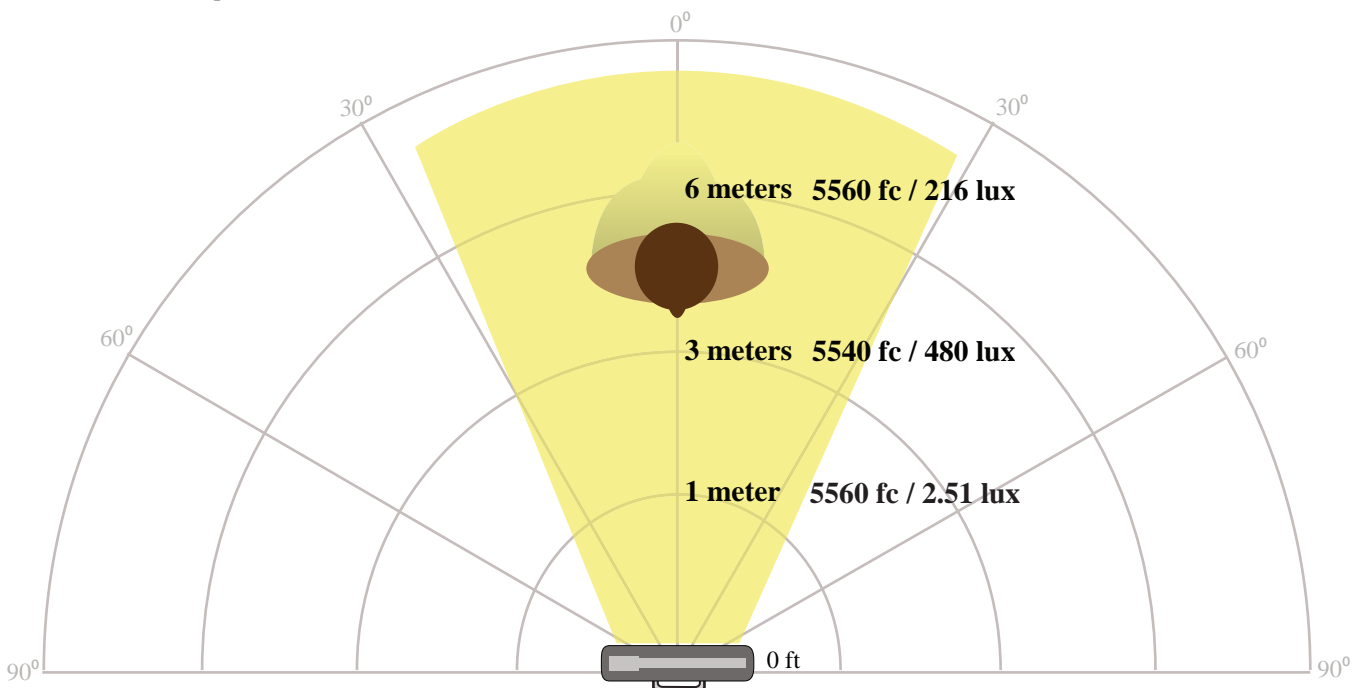
The IB 500 lux drop off (Horizontal)



IB 500 LUX Drop Off

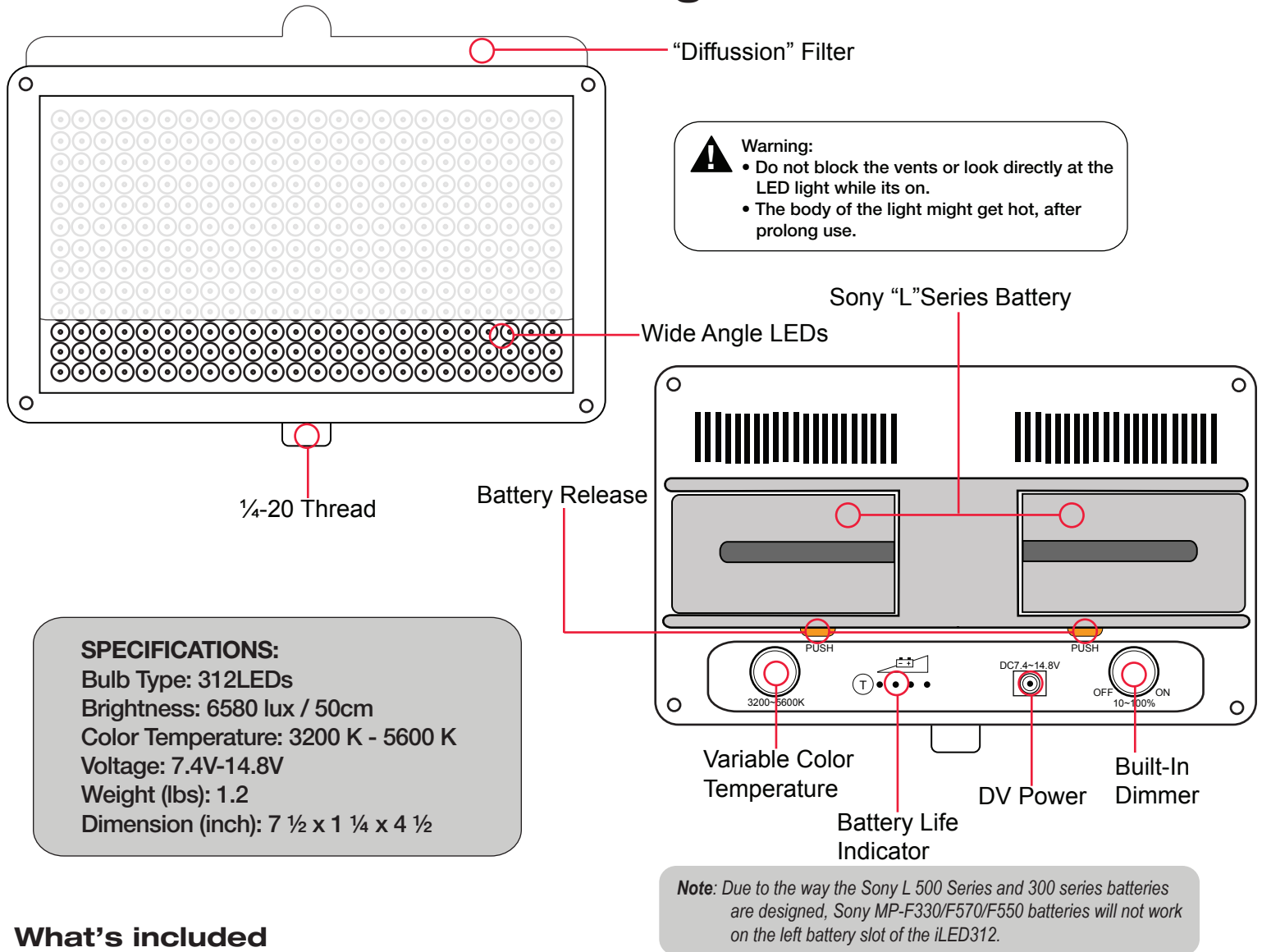
The right amount of light

The IB 500 lux drop off (Vertical)



iLED 312

On-Camera Dual Color LED Light QUICKSTART GUIDE



What's included

- iLED 312 Light
- AC Adapter
- Sony "L" DV Battery
- DV Battery Charger
- Soft Carrying Case
- SM201 Shoe Mount
- Diffusion Filter



CONDITIONS OF WARRANTY SERVICE

- Free service for one year from the day of purchase if the problem is caused by manufacturing errors.
- The components and maintenance service fee will be charged if the warranty period has expired.

Free Service will not be Provided in the Following Situations: (* Even if the product is still within the warranty period.)

- Damage caused by abuse or misuse, dismantling, or changes to the product not made by the company.
- Damage caused by natural disaster, abnormal voltage, and environmental factors etc.