



# LED Commercial Widescreen The LG EzSign TV



55LS460E



## FEATURES

The Best Award winner from the Commercial Integrator magazine for digital signage hardware, the LG EzSign TV is an innovation in digital signage that can entertain while maximizing the impact of your message. Create your own signage content by using your PC and the free EzSign software. Transfer that content by either using USB drive or wirelessly with optional Wi-Fi dongle and plug it in to the EzSign TV to run content in the form of a billboard - no additional hardware is needed. Advertisement, information, and a live television broadcast can be arranged on the same screen to attract attention and deliver specific messaging to your customers.

Digital Signage Function with Free S/W

Wireless content upload with optional Wi-Fi dongle

Time Scheduling available

ENERGY STAR 5.3 & RoHS COMPLIANT 

SMART ENERGY SAVING 

DYNAMIC CONTRAST RATIO 1,000,000:1

NATIVE DISPLAY RESOLUTION (1920 x 1080)

INTELLIGENT SENSOR

CLEAR VOICE II

PICTURE WIZARD II

CLOSED CAPTION

INVISIBLE SPEAKER SYSTEM

LG'S EXCLUSIVE TRIPLE XD ENGINE

USB 2.0 MEDIA HOST FOR PHOTOS AND MUSIC

SIMPLINK (HDMI CEC)

USB CLONING

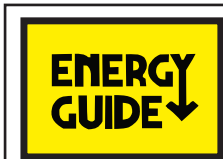
Public Display Settings - Cloning Capable

Multi Remote IR Code

3 HDMI™ INPUTS WITH HDCP

2 YEAR LIMITED WARRANTY (parts and labor)

\*NOTE: Contact your LG Sales representative on the RJP's that are compatible with the LS460E series.



The estimated annual energy cost determined in accordance with 16 CFR Part 305.5 for models 55LS460E is \$15, respectively.

"Your energy cost depends on your utility rates and use. The estimated cost is based on 11 cents per kWh and 5 hours of use per day. For more information, visit [www.ftc.gov/energy](http://www.ftc.gov/energy)."

<sup>1</sup>FTC Television labeling rule (18 CFR Part 305, as added by 76 Fed. Reg. 1038 (Jan 6, 2011)).

LGsolutions.com



**LG**  
Life's Good



LIFE'S GOOD...

## WHEN IT'S GREEN.

LG is committed to improving product development, manufacturing and usage to meet the demand for environmentally friendlier products. Our LS460E televisions have technologies to reduce power consumption and in return increase **cost savings** per room. We've also placed limits in the amounts of harmful materials used in these televisions.

- **EcoSmart**  
Energy Saving Levels - Manually select your choice for the brightness level for the television.
- **RoHS Compliant** - Meets directive on restriction of hazardous substances.
- **Energy Star 5.3 Qualified** - Meets current reduction requirements of energy consumption.

# FEATURES

## LG'S SIGNAGE TECHNOLOGY MEETS THE TELEVISION LG EZSIGN TV

**COST EFFECTIVE. SIMPLE. HIGHLY EFFECTIVE.**



### COST EFFECTIVE

No need to buy a media player - Create your own signage content by using your PC and the free EzSign software. Transfer that content by using a USB flash drive and plug it in to the EzSign TV to run it



**CUSTOMIZED TO YOUR NEEDS** - Signage content can be specific to your business

The LG EzSign TV allows you to create your own signage content and make revisions on the fly.



**FAST AND EASY** - Edit content quickly and easily

Select one of the pre-installed content templates. Apply images and add texts on it. It's that simple.



**VARIETY** - Pick and choose from a broad range of template designs

The LG EzSign TV gives you the power to choose and change according to your needs.

**FREE LG EZSIGN SOFTWARE V2.0** - Simple 4 step procedure

## WIRELESS CONTENT DELIVERY

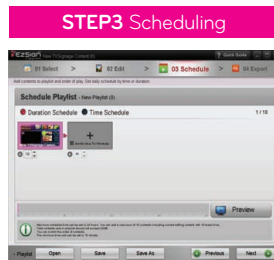
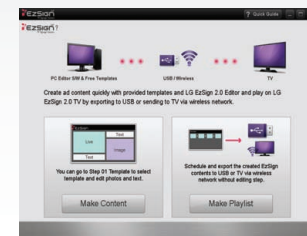
Manually select your choice for the brightness level for the television. By selecting Minimum, Medium, or Maximum, the power consumption will be reduced and an increase in energy savings can be achieved. (Note: Selecting minimum level may slightly increase power consumption on some models)



## EZSIGN SOFTWARE VERSION 2.0

**Make Content:** Starting with first step, you can create and export content.

**Make Playlist:** You can export created content files without editing a template. You can easily schedule your content displaying.



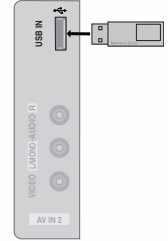
## PUBLIC DISPLAY SETTINGS

When used in public areas, these HDTVs can be easily programmed by the installer to have the TV turn on at a specified channel/volume level, set the minimum/maximum volume, lock out the control panel/remote, set the aspect ratio, and return to a factory reset. By using Power Management, these displays can be programmed to turn off if there has been no activity (remote or control panel buttons) for a preset time (1-7) hours.

Public Display Setting	
Public Display Mode	No
Start Channel	No
Ch. Type	TV
Major	2
Minor	0
Minimum Volume	0
Maximum Volume	100
Start Volume Level	No
Power Management Setting	20
Key Management	No
Factory Reset	1
Aspect Ratio	0

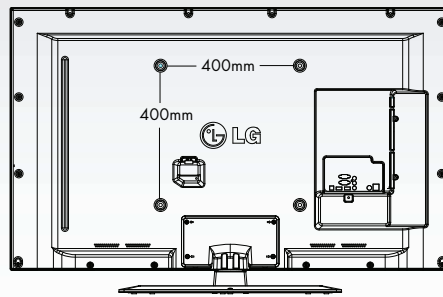
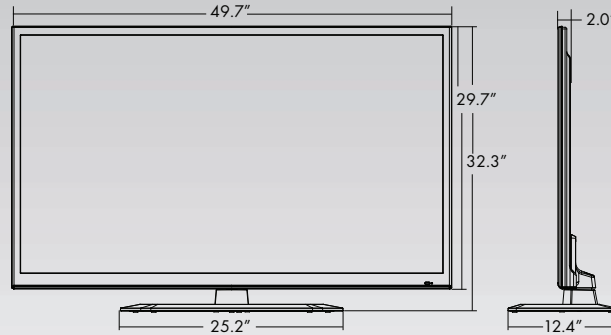
## USB CLONING

USB cloning will allow for easy transfer of Public Display Settings from the "Master TV" to an unlimited number of same type televisions.



# DIMENSIONS

55LS460E



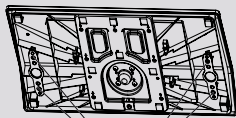
## invisible SPEAKER

### SOUND IS HEARD, NOT SEEN

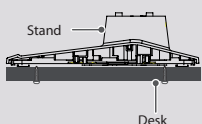
Enjoy a combination of smart technology and stylish design with the invisible speaker system custom tuned by audio expert Mr. Mark Levinson. This unique system provides a clean, polished look and an enhanced auditory experience by increasing the sweet spot and providing a wider sound field.



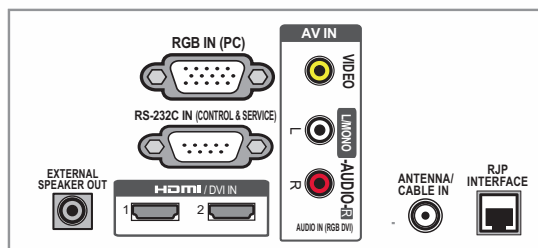
### MOUNTING HOLES ON STAND ATTACHING THE TV TO A DESK



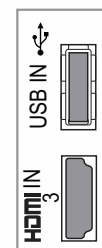
4-Screws  
(Not provided as parts of the product)



### REAR JACK PANEL



### SIDE JACK PANEL



55LS460E

55" class (54.6" measured diagonally)

## SPECIFICATIONS

LCD SPECIFICATION	
LED Backlighting	Edge LED
Screen Size	55" class (54.6" measured diagonally)
Native Display Resolution	1920 x 1080
Dynamic Contrast Ratio	1,000,000:1
Frame Rate	60HZ
AUDIO	
Infinite Sound	Yes
Clear Voice II	Yes
Pro:Centric	EzSignTV
Hotel Mode	Yes (PDM)
IR Out	Yes (RS-232C)
External Speaker Out	Yes
RJP Interface	Yes
USB(2.0)	Yes
USB Cloning	Yes
SPECIAL FEATURES	
Multi IR Code (Bed 1/2 Function)	Yes
Welcome Screen (Splash Image)	Yes
Auto Off / Auto Sleep	Yes
Video Mute	Yes
Smart Energy Saving	Yes
RoHS Compliant	Yes
Swivel Stand	Yes ( $\pm$ 20 degrees)
VESA Compatible	Yes (400mm x 400mm)
INTERFACE	
HDMI In	2 (Rear), 1 (Side)
RS-232C (Control & Service)	1 (Rear)
RF In	1 (Rear)
AV In	1 (Rear)
RGB In	1 (Rear)
USB 2.0	1 (Side)
External Speaker Out	1 (Rear)
POWER	
Voltage, Hz	100V - 240V, 50/60 Hz
Stand-by Mode	Under 1W
Dynamic/Static Power Savings	Yes
Power Consumption (with Power Saving Modes Disabled)	Typical 73.9W
DIMENSIONS & WEIGHT	
TV without stand (WxHxD)	49.7" x 29.7" x 1.4"
TV with stand (WxHxD)	49.7" x 32.4" x 12.4"
Shipping Dimensions (WxHxD)	61.8" x 34.7" x 7.5"
TV without stand weight	48.3 lbs
TV with stand weight	56.2 lbs
Shipping weight	68.8 lbs
SERVICE/LIMITED WARRANTY	2 Year (Parts/Labor)
UPC CODE	
55LS460E	7 19192 90397 5

LGSolutions.com



LG Electronics U.S.A., Inc.  
HE BEB Division  
2000 Millbrook Drive  
Lincolnshire, IL 60069

Customer Service: 888.865.3026  
www.LGSolutions.com/support

Contact your LG Regional Sales Representative  
Channel: 800.897.8871  
Hospitality: 800.228.1236  
E-mail: info@LGSolutions.com



**LG**  
Life's Good

SPEC\_55LS460E\_081218\_PR

Required PC spec for installation: Pentium M or 4 CPU, 512MB RAM, Windows XP sp2, 200MB HDD



All screen images are simulated. Dimensions and weights are approximate. Design, features and specifications subject to change without notice.

© Copyright 2012 LG Electronics USA, Inc. All Rights Reserved. "LG Life's Good" is a registered trademark of LG Corp. XD Engine is a registered trademark of LG Electronics, Inc. HealthView and EcoSmart are trademarks of LG Corp. ENERGY STAR is a registered trademark of the U.S. Environmental Protection Agency. Dolby and the double-D symbol are registered trademarks of Dolby Laboratories. SRS and the SRS symbol, TruSurround XT and WOW are trademarks or registered trademarks of SRS Labs, Inc. VESA is a trademark of Video Electronics Standards Association. All other product and brand names are trademarks or registered trademarks of their respective companies.

Printed in the USA. September 2012 LED TV is LCD TV with LED backlighting