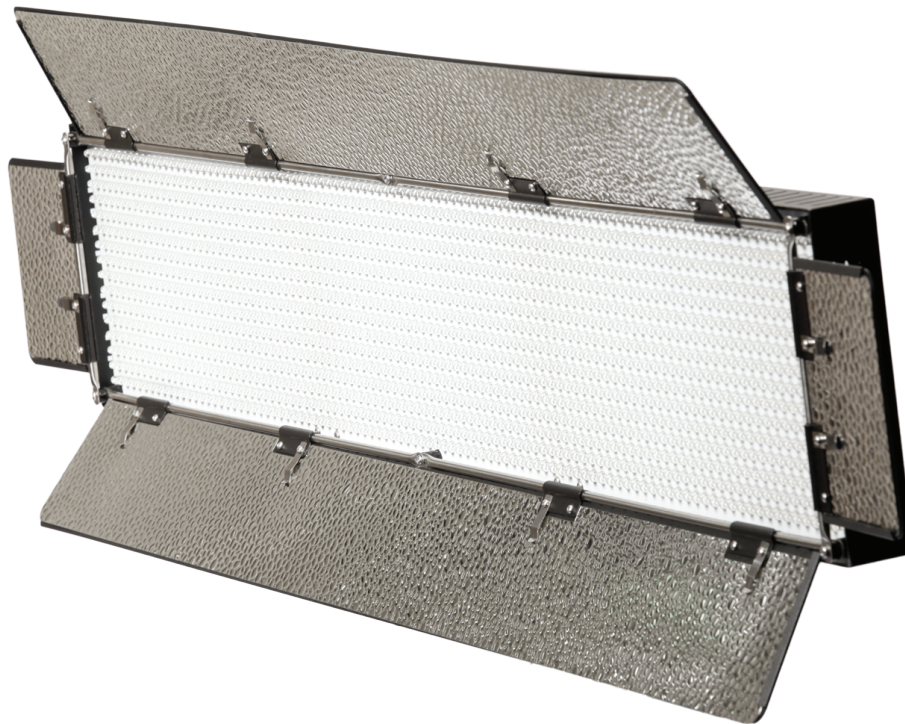


IDMX1500

1500 LED Light w/ DMX Control QUICKSTART GUIDE



What's included

- IDMX1500 LED Light
- AC Adapter
- DMX Cable
- Safety Cable

Checked by

CONDITIONS OF WARRANTY SERVICE

- Free service for one year from the day of purchase if the problem is caused by manufacturing errors.
- The components and maintenance service fee will be charged if the warranty period has expired.

Free Service will not be Provided in the Following Situations: (* Even if the product is still within the warranty period.)

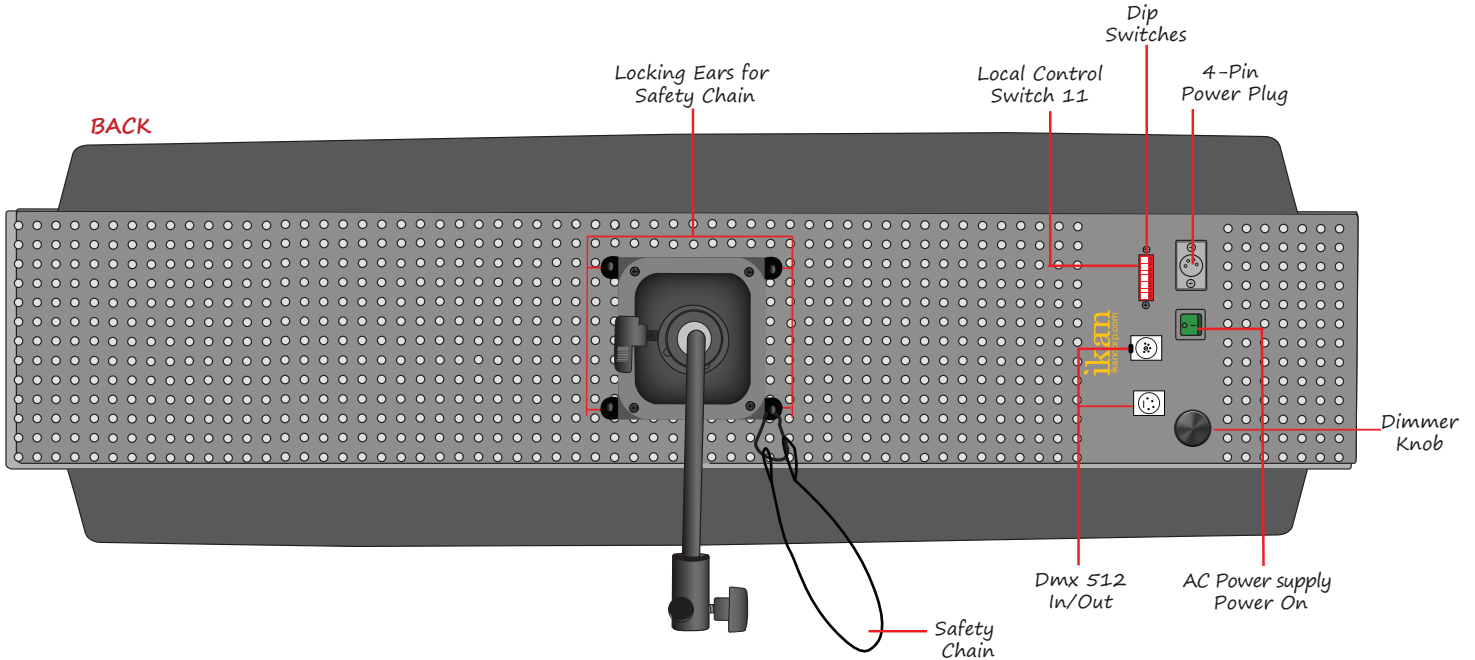
- Damage caused by abuse or misuse, dismantling, or changes to the product not made by the company.
- Damage caused by natural disaster, abnormal voltage, and environmental factors etc.

IDMX1500

1500 LED Light w/ DMX Control QUICKSTART GUIDE

Attention:

If not using DMX, make sure that DIP Switch #11 is in the ON position.



GETTING STARTED

1. Power on the light using the Main Power switch
2. Control the amount of light with the Dimmer Knob clock-wise until you hear a “click”.
3. Turn the light off by twisting the Dimmer Knob counter clock-wise until you hear a “click”.
4. The IDMX1500 can also be powered by the included AC adapter.

ADJUSTING THE BRIGHTNESS

The Dimmer Knob on the back of the light allows you to adjust the intensity of the light. Adjust the intensity of the light by turning the Dimmer Knob clock-wise to increase the intensity and counter clock-wise to reduce it.

SPECIFICATIONS

Operating Volts:	24V
Color Temperature:	5600 K
Brightness:	3 ft. / 5749 lux / 5600 K
Dimension:	38.9” x 7.3” x 1.6”
Weight:	7.5 lbs