

Models: U181RL-LC

19" Rackmount AC Panel with lamp – 15A Corded

Description:

This 19" rackmount power panel brings power distribution and switch controls to the front of the rack with built-in lighting for convenient activation and power-down of equipment. Model No. U181RL-LC with 15 foot cord features a slim (1U) chassis with front-mounted controls, front lamps with deflector hood and four rear 15A duplex outlets. Unique, dual function design is great for power distribution in racks that are located in dark or confined areas. In addition to the lamps and deflector hood, the front of the power panel includes a lighted power switch with circuit breaker, lamp On/Off switch, and an adjustable rheostat lamp brightness switch. The rear of the panel features four duplex outlets with a 15-amp power rating and a 15-foot cord with grounded Nema 5-15P molded plug. Steel chassis is finished in black powder epoxy and measures 19"W x 1.75"H (1U) x 4.75"D with 1.5" front projection.

Features:

- Rackmount power panel with front switched outlet controls
- Lighted front includes two 6W lamps and downward deflecting hood
- 19"W x 1.75"H (1U) x 4.75"D + 1.5" front projection
- Made in the U.S.A.

Optional:

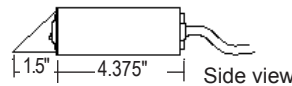
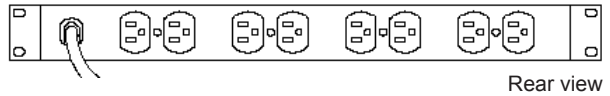
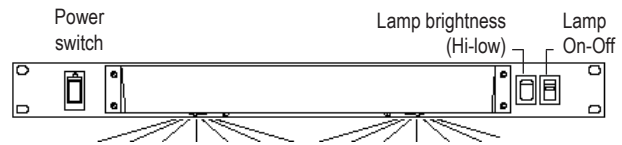
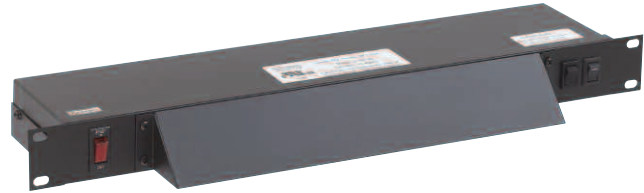
- Model No. U181RL is the same panel except with a standard length (6-ft.) cord. It has been discontinued and is available in limited quantities.

Specifications:

Power Rating: 120VAC, 60Hz, 15A 1800W
 Termination: cord (6-foot or 15-foot) with NEMA 5-15P plug
 Actuation Switch: front panel lighted on/off rocker
 Lamps: two 6W bulbs furnished
 Lamp Switches: on/off, hi/low brightness
 Receptacles: total of 8 switches (four duplex, switched)
 Chassis: steel with black powder epoxy paint finish
 Dimensions: 19"W x 1.75"H x 4.375"D with 1.5" front projection for lamp/hood assembly
 Weight: 5 lbs.

A & E Specifications:

The power panel shall be Lowell Model U181RL-LC with 15W rating and built-in front light with hood. Power panel shall include four duplex outlets on the rear of the chassis with a power rating of 15A. Front shall include a lighted rocker-style power switch, two 6W lamps, lamp hood, and switches for lamp brightness and lamp on/off functions. Chassis shall be steel construction finished in black powder epoxy. It shall measure 19"W x 1.75"H x 4.375"D with 1.5" front projection for lamp/hood assembly. It shall terminate in a 15-ft. cord.



Model	Description	Amperage	Rear Outlets	Cord	Lamp
U181RL-LC	AC Rackmount Panel (1U) with lamp	15A	4 duplex	15 foot	Yes
U181RL	AC Rackmount Panel (1U) with lamp	15A	4 duplex	6 foot	Yes

NOTE: Model shaded in grey has been discontinued and is only available in limited quantities.