

MCP2-C3F

MCP1-C3F

Quality Features

- Labor saving wall plate assemblies feature factory-installed microphone connectors.
- Selection includes 1-gang and 2-gang models.
- Engineered to mount standard E.O. boxes or Lowell's surface box Series P1X.
- Includes mounting hardware.

For vandal-prone applications, optional tamper resistant screw Model TP06321P and companion screwdriver HRP632 may be ordered separately-see page 2. For surface mount applications, Lowell box Series P1X with .5" knockouts and white finish is available (order separately-see page 2).

For custom build applications, wall plates without mounted connectors are also available; see specs on Models MCP13 (punched for one D3F connector; MCP14 and MCP24 (punched with .375" hole).

Description

Lowell wall plate assemblies with factory-installed connectors provide labor-saving field installation. Series MCP1 and MCP 2 are 1-gang and 2-gang assemblies respectively. Both feature stainless steel plates with noted connectors mounted for easy field installation. The plates have countersunk mounting holes that align to standard gang-size E.O. boxes. Zinc oval-head mounting screws size 6-32 x .75 are supplied.

A & E Specifications

Wall plate with factory-mounted microphone connector(s) shall be Lowell Model _____. The assembly shall be ____ (1-gang, 2-gang) stainless steel with a quantity of ____ (one, two) mounted connectors type _____ (C3F, C3M, D3F, D3M). The assembly shall mount to standard gang-size electrical boxes or to Lowell's surface box Model ____ (P1X, P1X-2) and shall include 6-32 hardware for installation.

Model	Plate Size Size	Plate Material Material	Mounted Connector(s)	Optional Surface Box (Order separately-see page 2)
MCP1-C3F	1-gang	Stainless Steel	(1) C3F	P1X (1-gang, 2.5"D, white)
MCP1-C3M	1-gang	Stainless Steel	(1) C3M	P1X (1-gang, 2.5"D, white)
MCP1-D3M	1-gang	Stainless Steel	(1) D3M	P1X (1-gang, 2.5"D, white)
MCP1-D3F	1-gang	Stainless Steel	(1) D3F	P1X (1-gang, 2.5"D, white)
MCP2-C3F	2-gang	Stainless Steel	(2) C3F	P1X-2 (2-gang, 2.5"D, white)
MCP2-C3M	2-gang	Stainless Steel	(2) C3M	P1X-2 (2-gang, 2.5"D, white)
MCP2-D3M	2-gang	Stainless Steel	(2) D3M	P1X-2 (2-gang, 2.5"D, white)
MCP2-D3F	2-gang	Stainless Steel	(2) D3F	P1X-2 (2-gang, 2.5"D, white)



MCP1 and MCP2 Series

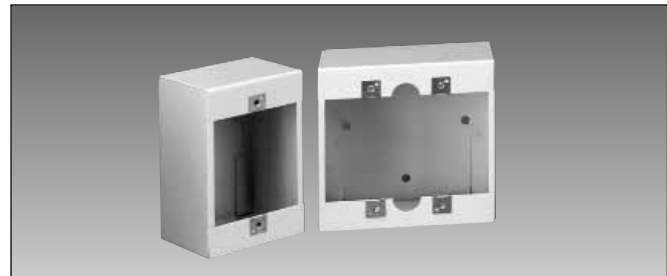
Wall Plates with Mounted Microphone Connectors

A
U
D
I
O

Mounting Accessories for Wall Plates (order separately)

P1X Series Surface Boxes are ideal for mounting a variety of gang size devices. Construction is 20-gauge steel with a white powder epoxy finish. Front flanged holes conform to standard wall plate centers and hardware. Knockouts (.5") are provided in the rear and on the sides for wire/conduit entry.

Model	Size	Dimensions	Knockouts	Color
P1X	1-gang	2.875"W x 4.625"H x 2.5"D	(4) 1/2"	White
P1X-2	2-gang	4.625"W x 4.625"H x 2.5"D	(5) 1/2"	White



P1X

P1X-2

Optional surface boxes (order separately)

Tamper-resistant screws and screwdriver tip are available for applications that require vandal protection. See chart below.

Model	Description	Quantity
TP06321P	Tamper resistant spanner screw 6-32 x .75	1
HRP632	Hdwr screwdriver and tip for 6-32 spanner screws	1

12"/10"
Speakers &
Accessories

8"
Speakers &
Accessories

6"
Speakers &
Accessories

4"
Speakers &
Accessories

Horn
Speakers &
Accessories

Masking
Speakers &
Generators


Control
Accessories
& Electronics

Wall Plates & Boxes