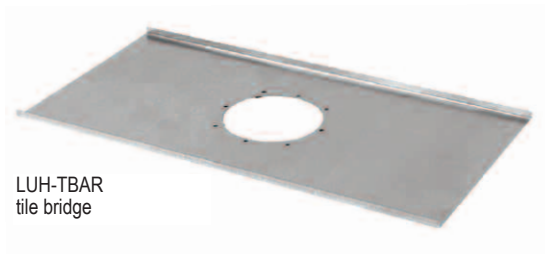


Model: LUH-TBAR

Tile Bridge (for Unihorn™)

Description

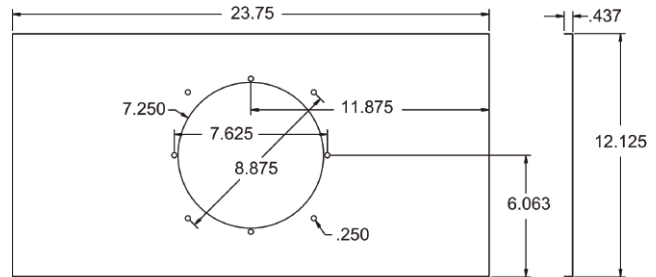
Tile bridges are often required, for safety reasons, by local building codes, and for aesthetics to reduce the potential of unsightly ceiling tile sag. Lowell tile bridge Model LUH-TBAR is engineered specifically to distribute the Unihorn™ assembly (LUH-15T) weight (6 lbs) to the ceiling support system when installed in a suspended 2' x 2' or 2' x 4' tile ceiling system. The horn installs to the tile bridge using screwdriver adjustable clamps (dogs).



LUH-TBAR tile bridge

Features

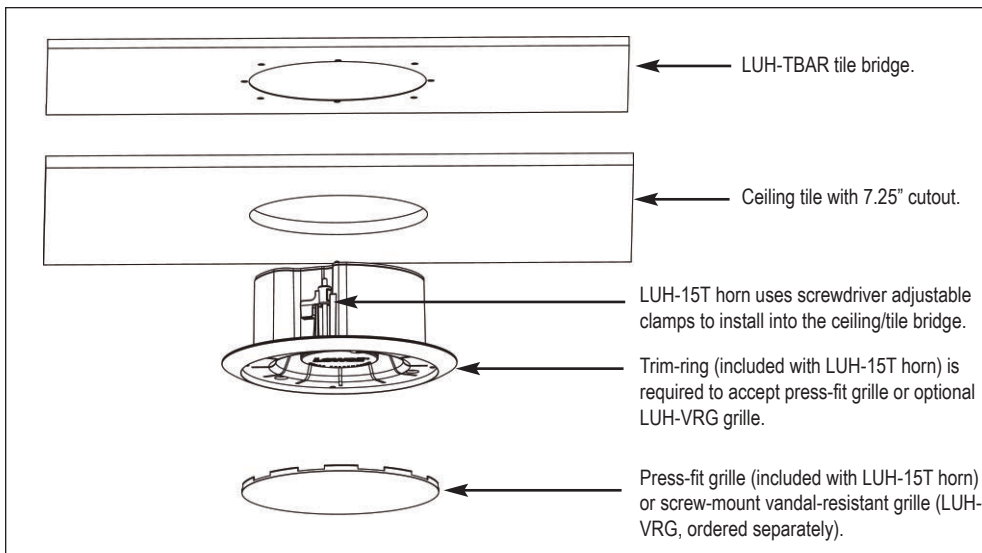
- Formed construction is lightweight with rigid support.
- Galvanized 20-gauge US steel
- 23.75"L x 12.125"W
- Round center opening (8.875" dia.)
- Mounts Lowell Unihorn™ Model LUH-15T when used without a grille, with the horn's press-fit grille, or with vandal-resistant grille LUH-VRG.



A & E Specifications

Tile bridge shall be Lowell Model LUH-TBAR. It shall be formed from 20-gauge galvanized steel and be engineered to support and distribute the weight of Lowell Unihorn™ LUH-15T assembly to the ceiling support system in a 2' x 2' or 2' x 4' suspended ceiling installation.

Installation (typical)



Model No.	Mounts Horn	Material	Outside Dimensions	Opening Size
LUH-TBAR	LUH-15T	Galvanized steel	23.75"L x 12.125"W	8.875" dia.