

Utility Drawer – Economy

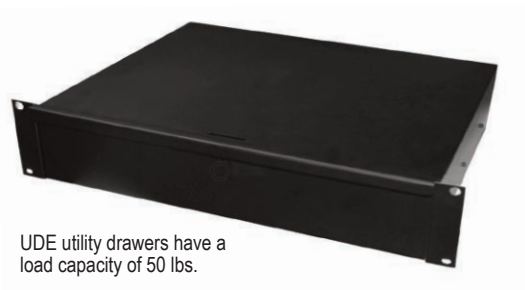
Description:

The UDE-series of utility drawers feature fully welded construction of 16-gauge steel. The drawers mount to front rack rails using standard EIA spacing and feature ball-bearing slides for smooth operation. Drawers have a load capacity of 50 lbs. Smooth, black powder epoxy finish.



Features:

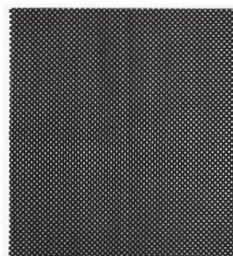
- Fully-welded 16-gauge US steel.
- Ball-bearing slides.
- Mounts on front rails of 19"W EIA rack.
- Load Capacity: 50 lbs.
- Smooth black powder epoxy finish.
- Made in the USA.



UDE utility drawers have a load capacity of 50 lbs.

Options: (order separately)

- **DFI-series:** drawer foam inserts are designed to protect sensitive equipment. Die-cut foam is pre-scored so you can "pick and pull" sections to create custom holes that keep accessories from jostling when drawer is opened and closed. Insert includes two pieces (die-cut foam plus 3/8" foam pad for bottom). 15.5" x 14". Fits UDE, UDEL and UDP-series drawers.
 - **DFI-2:** for 2U drawer
 - **DFI-3:** for 3U drawer
 - **DFI-4:** for 4U drawer
- **CDM:** the cabinet drawer mat is a non-slip, perforated liner that provides a protective barrier between electronics accessories and the drawer's metal surface. 15.5" x 14".



Optional non-slip drawer mat (CDM).



Create a custom-fit to cushion sensitive electronics with the optional (DFI) foam insert.

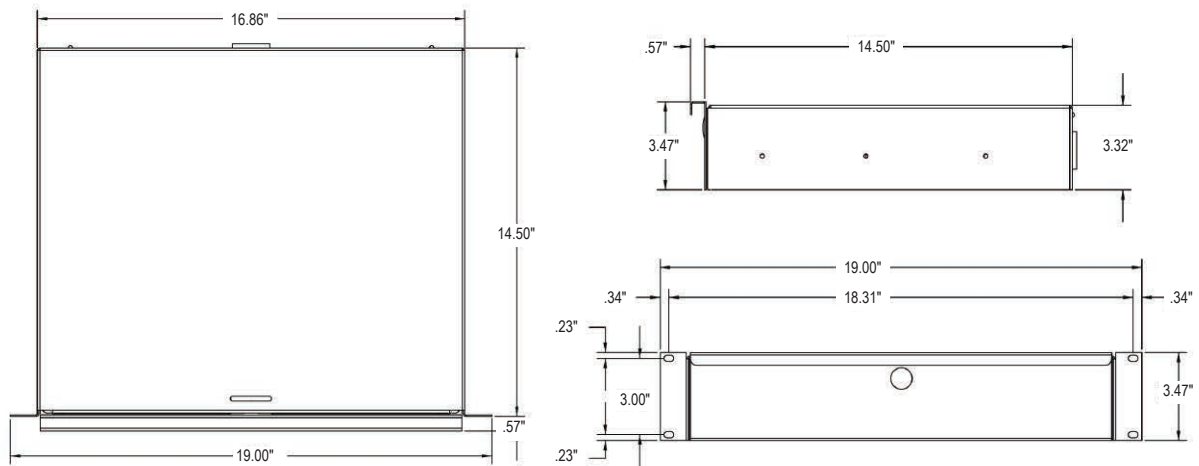
A & E Specifications:

The rackmount utility drawer shall be Lowell Model _____. It shall have a panel space height of _____ and shall be fully-welded, 16-gauge steel with a black powder epoxy finish. The drawer shall feature ball-bearing slides and have a load capacity of 50 lbs.

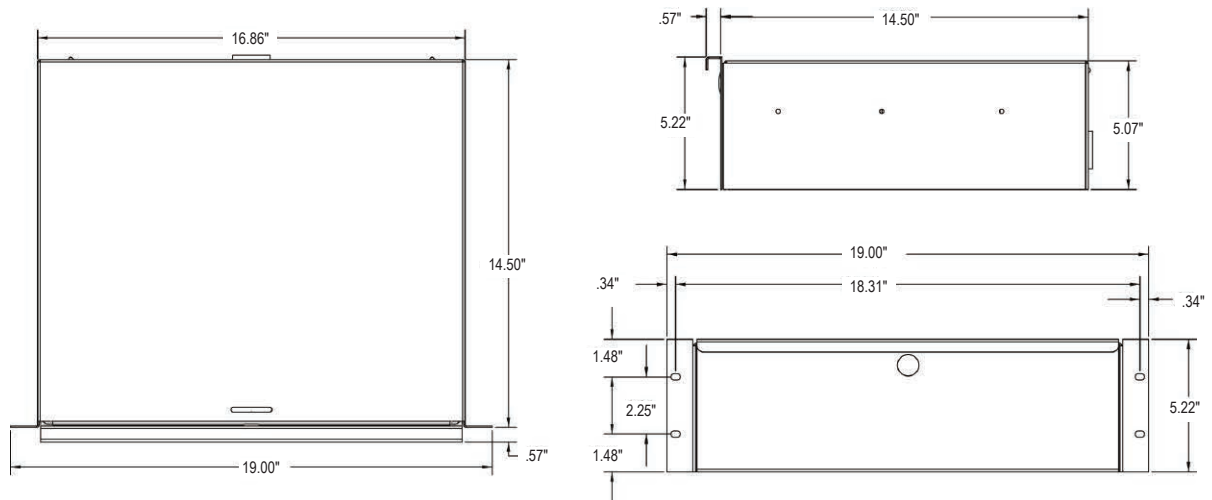
Model No.	Description	Rack Units	Depth	Overall Width	Load Capacity
UDE-214	Utility Drawer, Economy	2	14.5"	19"	50 lbs.
UDE-314	Utility Drawer, Economy	3	14.5"	19"	50 lbs
UDE-414	Utility Drawer, Economy	4	14.5"	19"	
DFI-2	Drawer Foam Insert (for 2U drawer)				
DFI-3	Drawer Foam Insert (for 3U drawer)				
DFI-4	Drawer Foam Insert (for 4U drawer)				
CDM	Cabinet Drawer Mat				

One rack unit = 1.75"

UDE-214



UDE-314



UDE-414

