

ALLEN&HEATH

Parts identification sheet

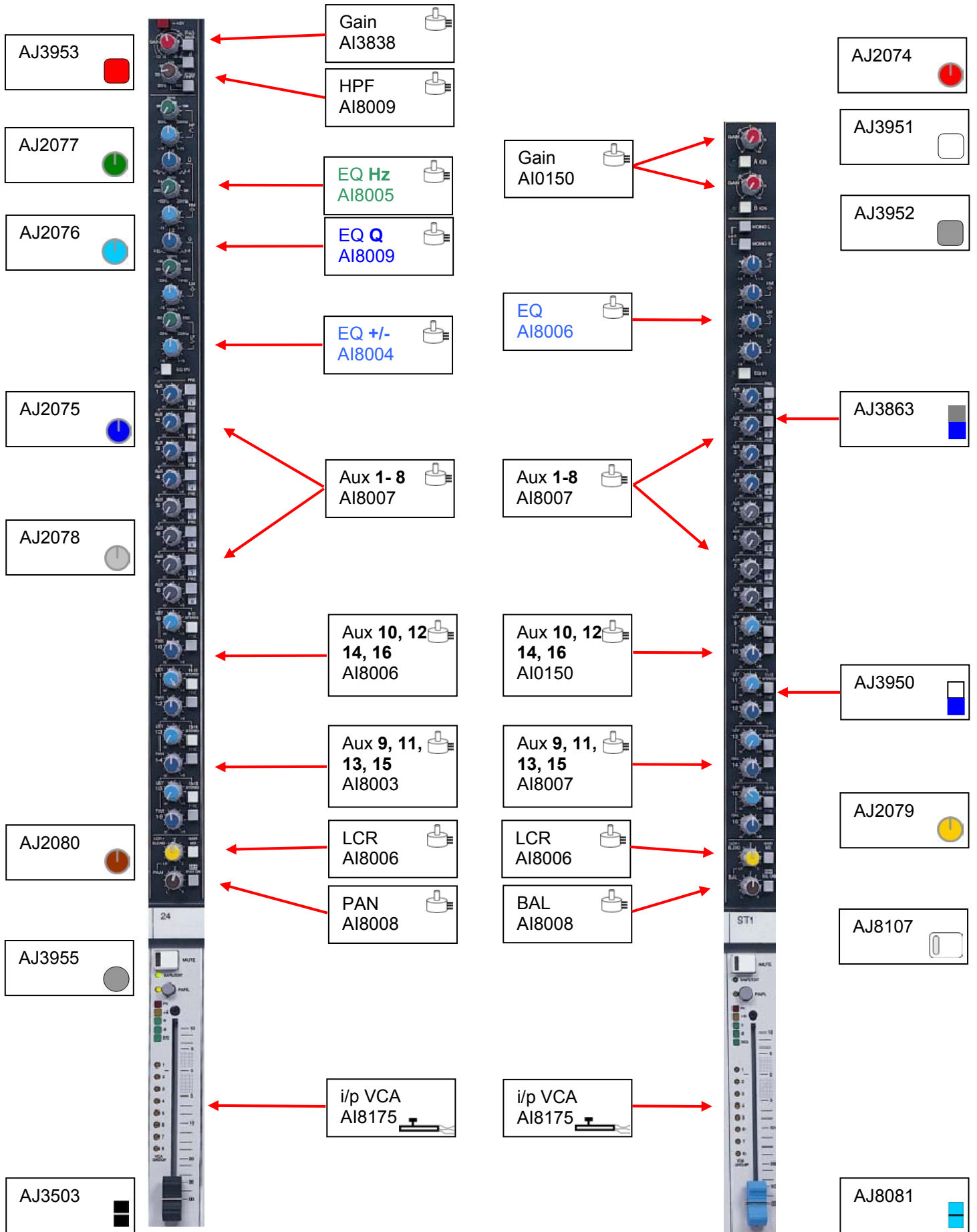
ML5000

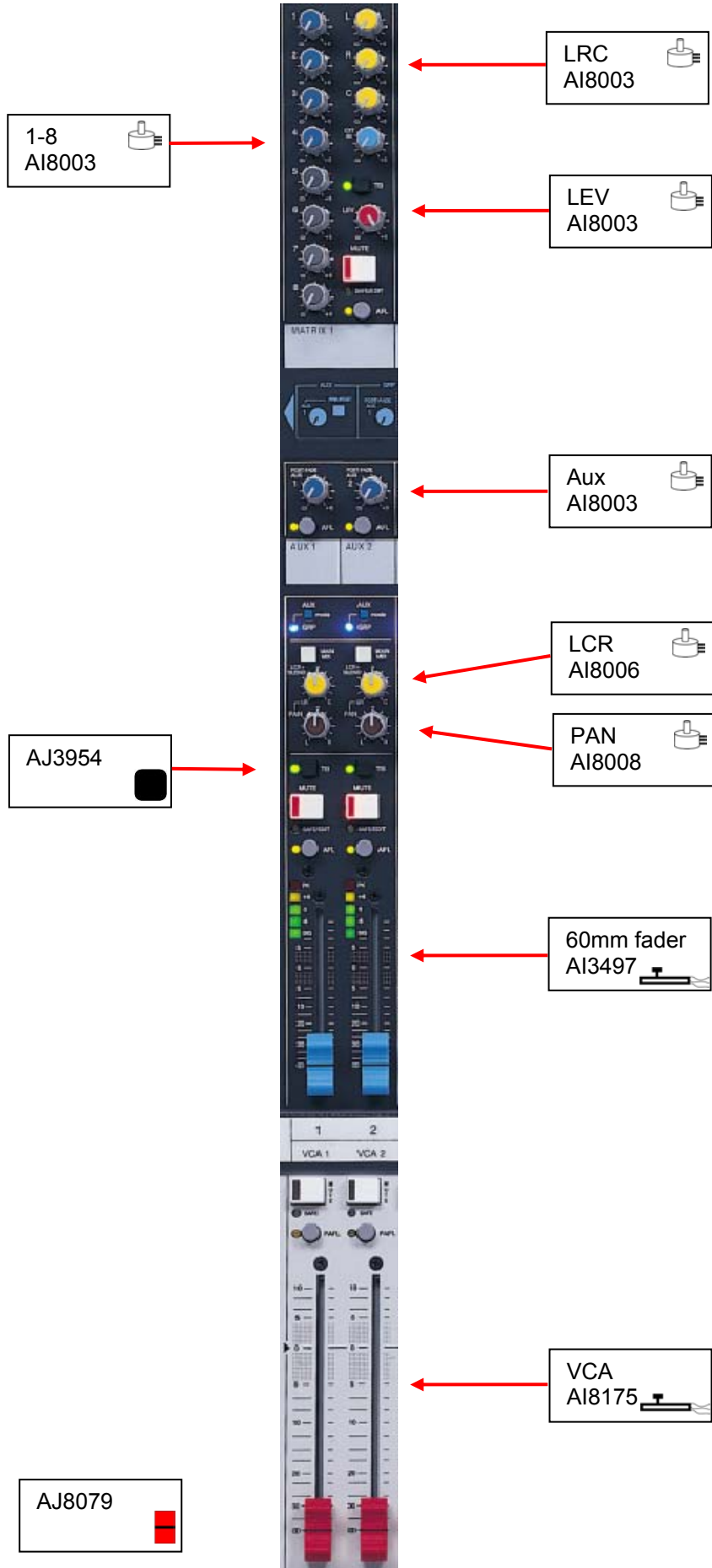
How to order parts

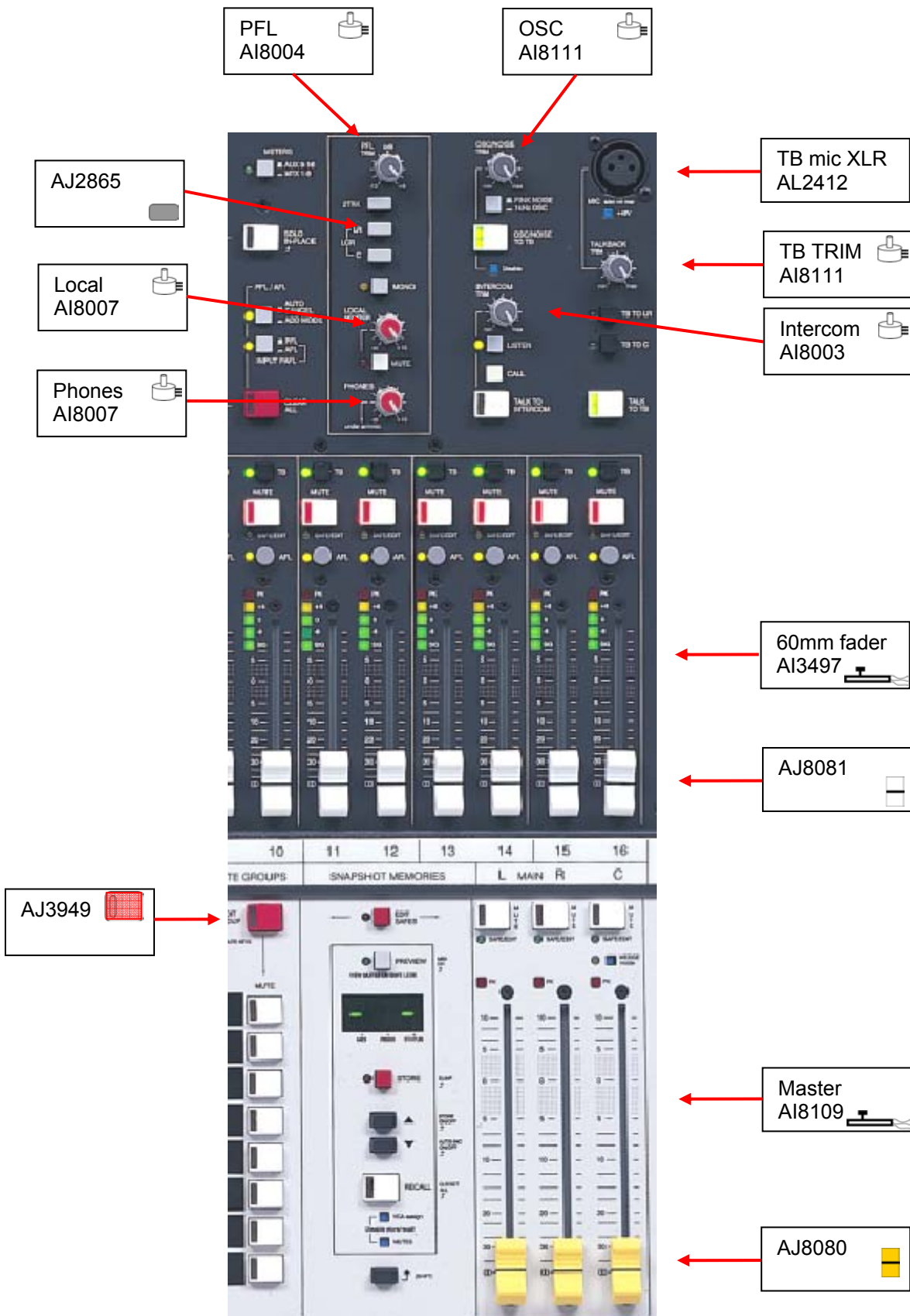
Parts must be ordered from our distributor in your territory. A list of international distributors can be viewed at <http://www.allen-heath.com/UK/distributors.asp>

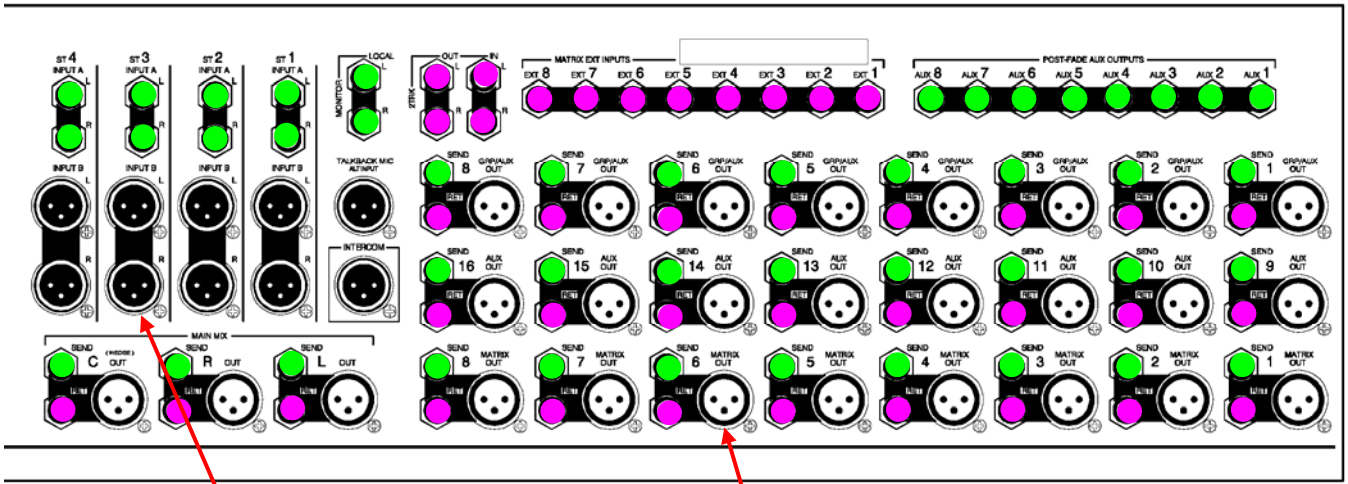
UK parts must be ordered through an appointed A&H dealer or service centre. A list of UK service centres can be viewed at http://www.allen-heath.com/UK/service_centres.asp

POTS FADERS & KNOBS:





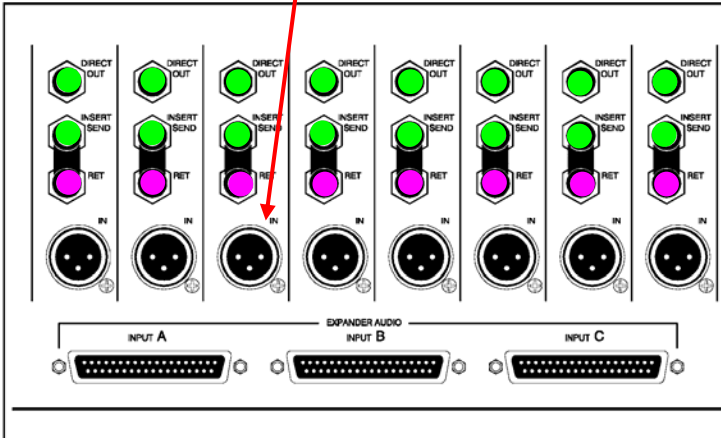





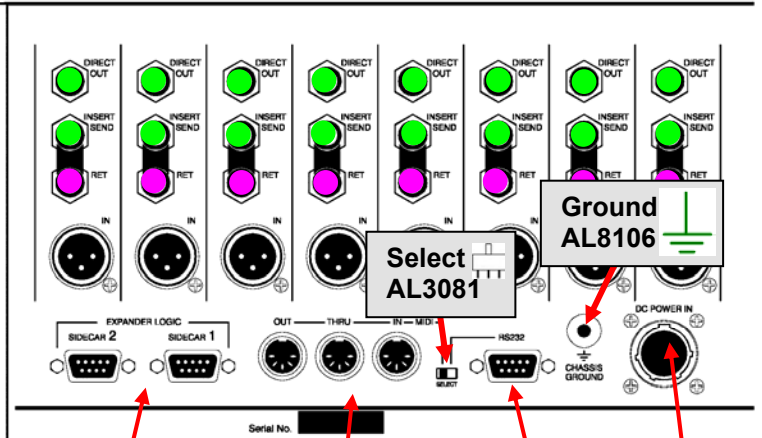
i/p XLR
AL2410




o/p XLR
AL2411

Expander i/p
AL3956

Expander logic
AL3746



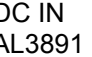
MIDI
AL3962

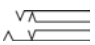



RS232
AL3746

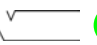



DC IN
AL3891



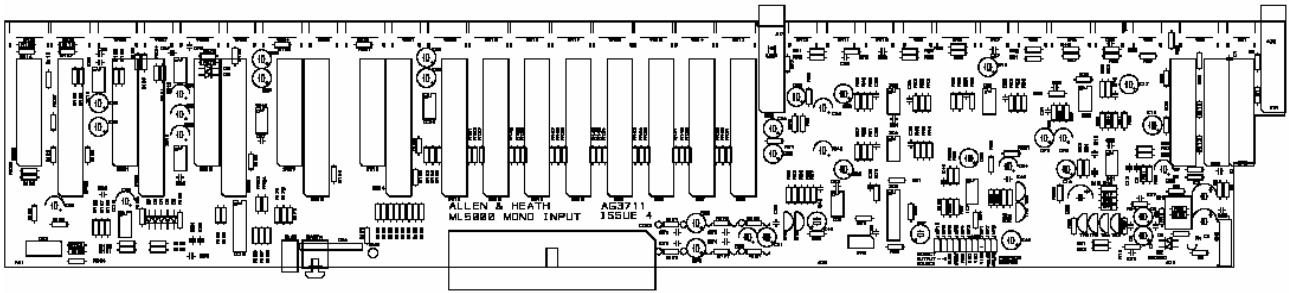
Jack switched AL3410  

Insert return
2TRK IN / OUT
Matrix Ext IN

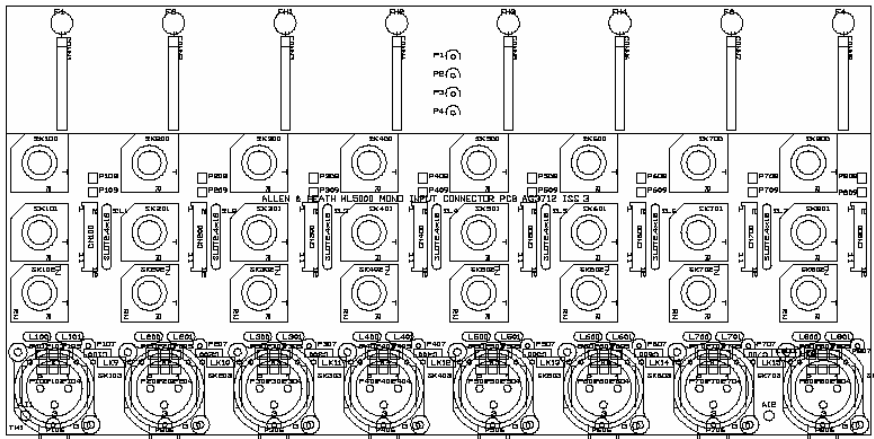
Jack un-switched AL3407  

Direct out
Insert send
Local Monitor
ST1, 2, 3, 4 L/R
Post Fade Aux Outputs

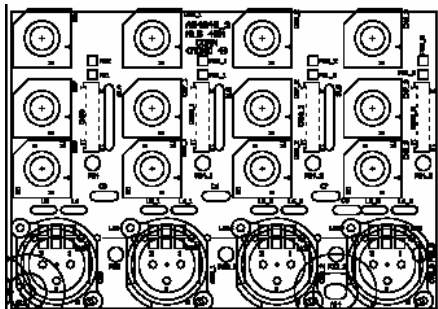
INTERIOR PARTS:



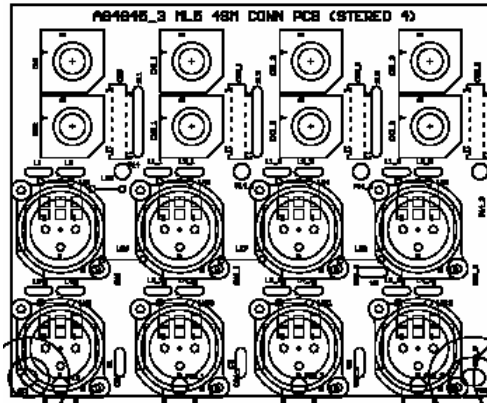
Mono i/p
002-529



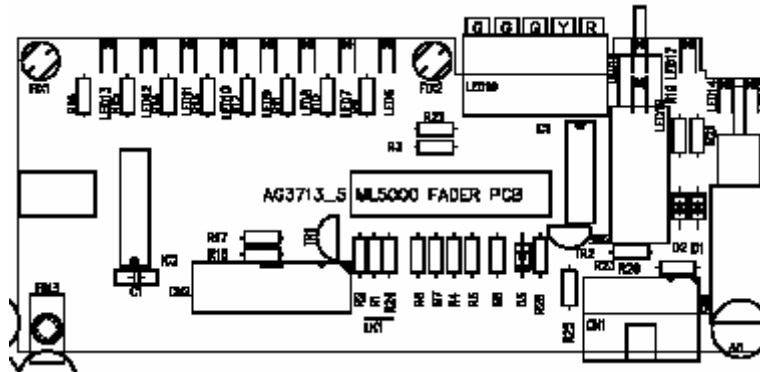
Mono connector
002-560



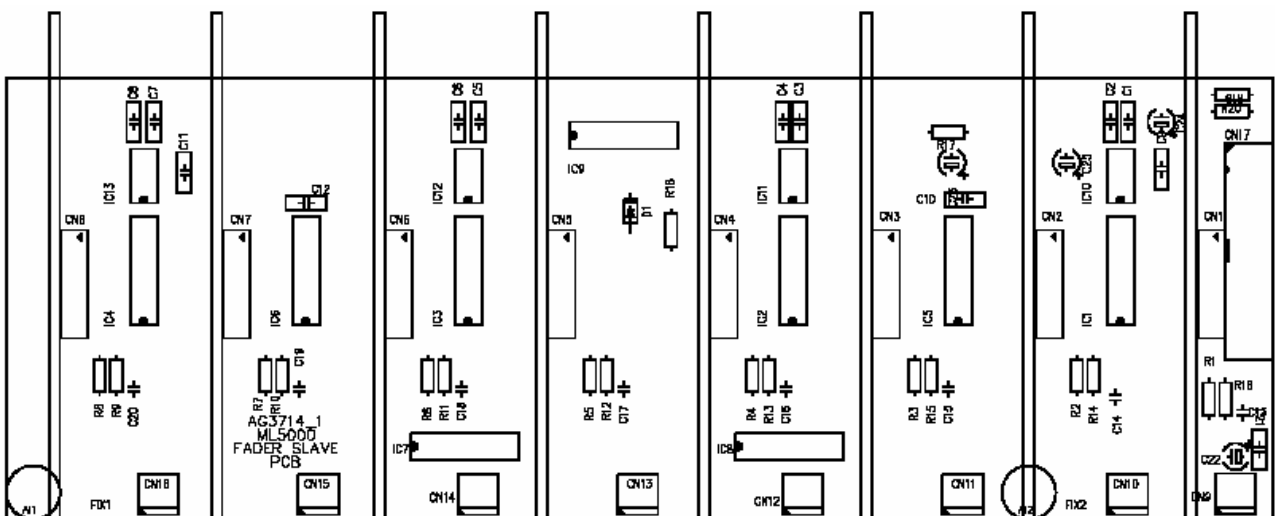
4M connector (B version)
003-188



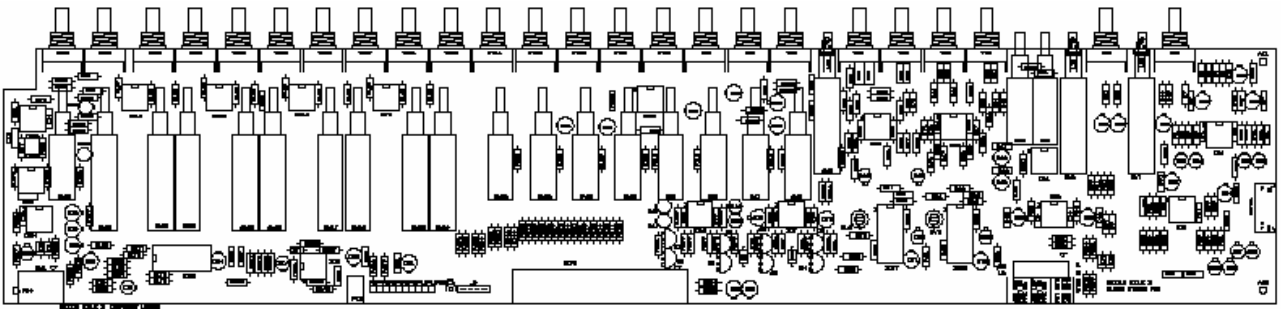
4S connector (B version)
003-198



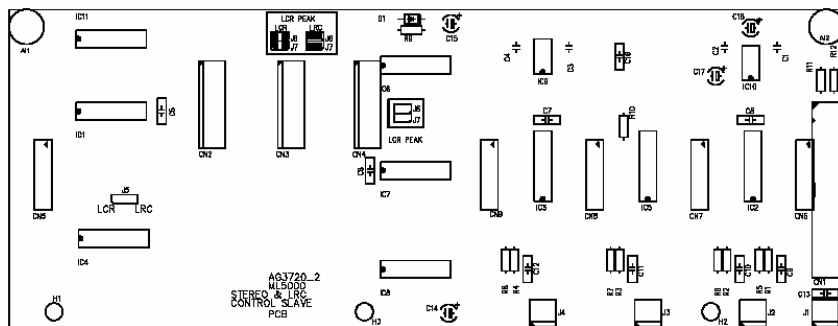
Fader PCB
002-530



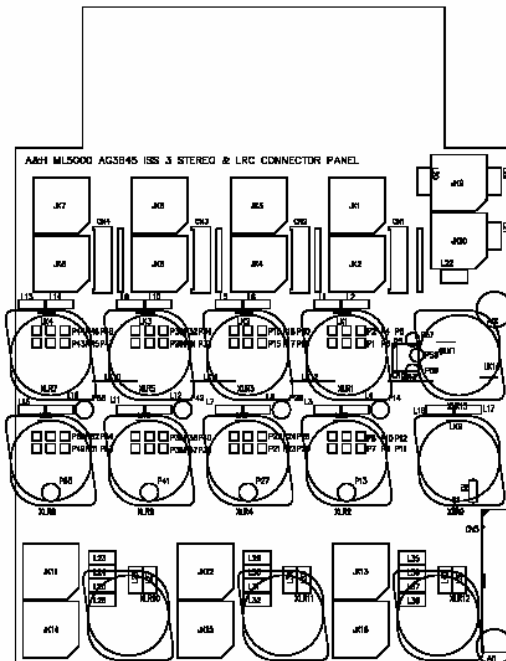
Fader slave
002-717



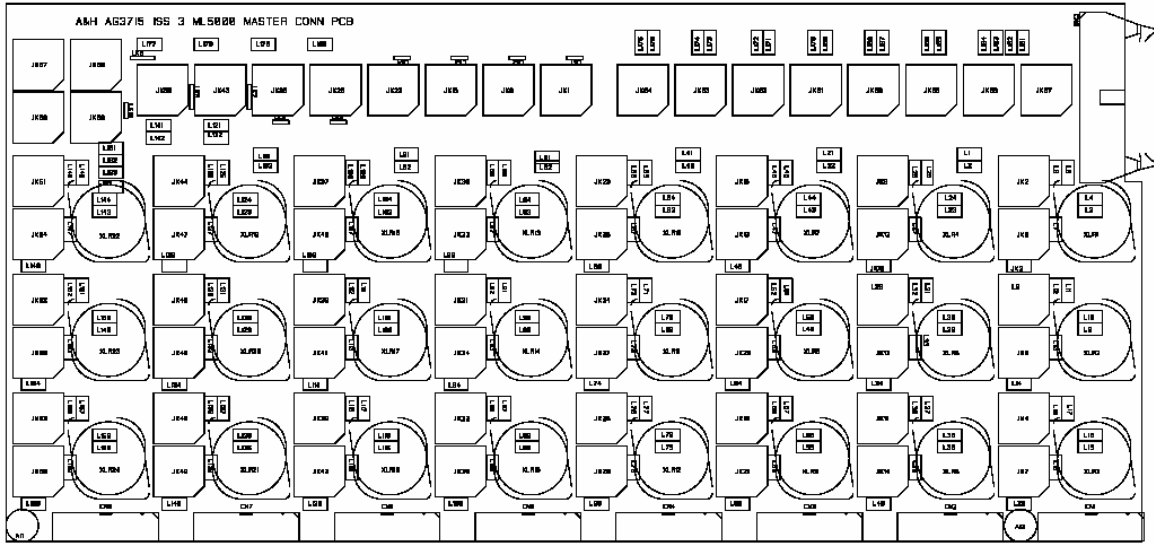
Stereo i/p
002-564



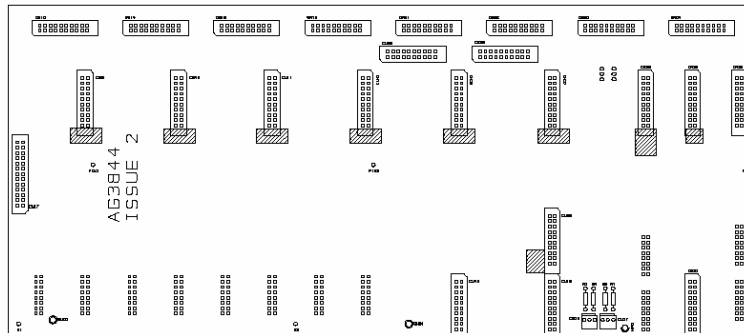
Control panel
002-549



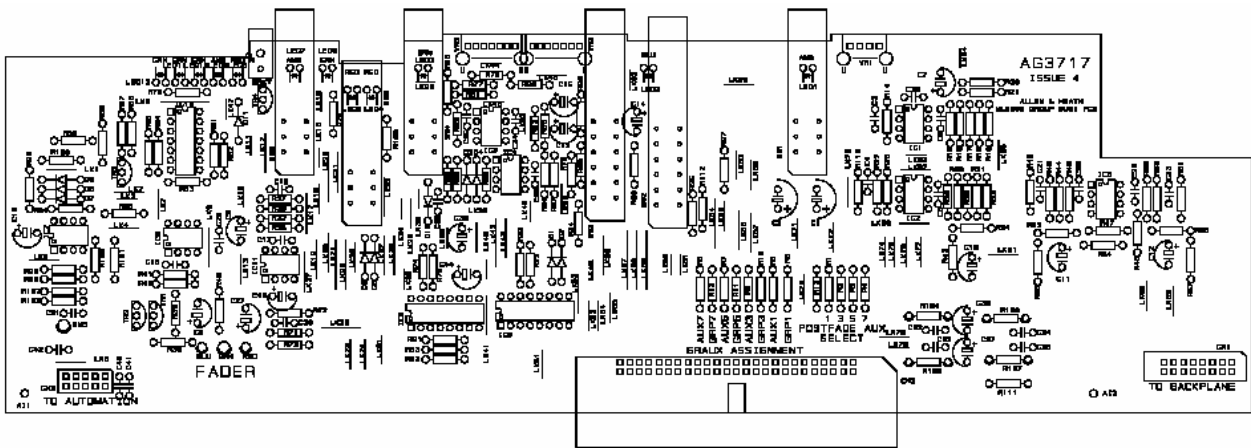
Stereo / LRC connector
002-565



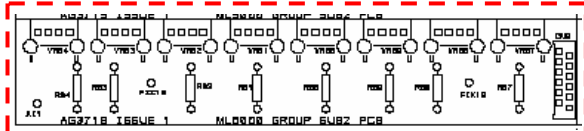
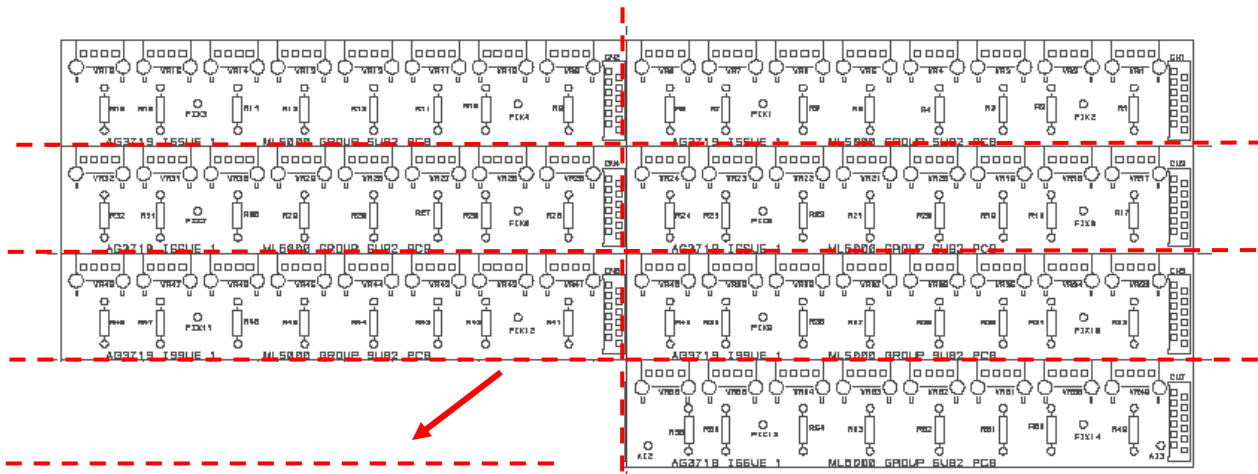
Master connector
002-555



Master distribution
002-556

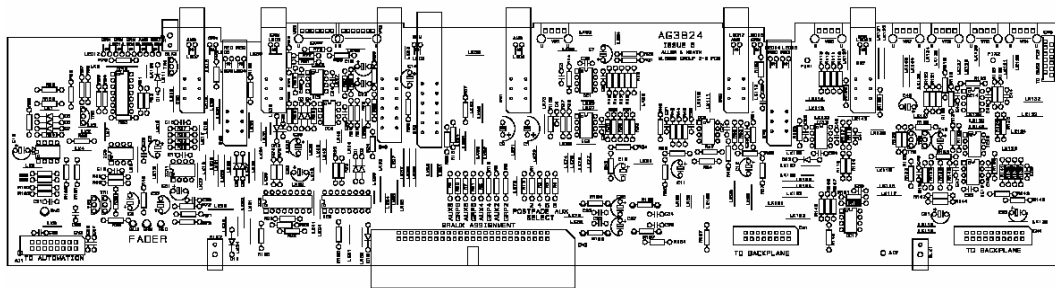


Group 1, 3, 5, 7
002-552

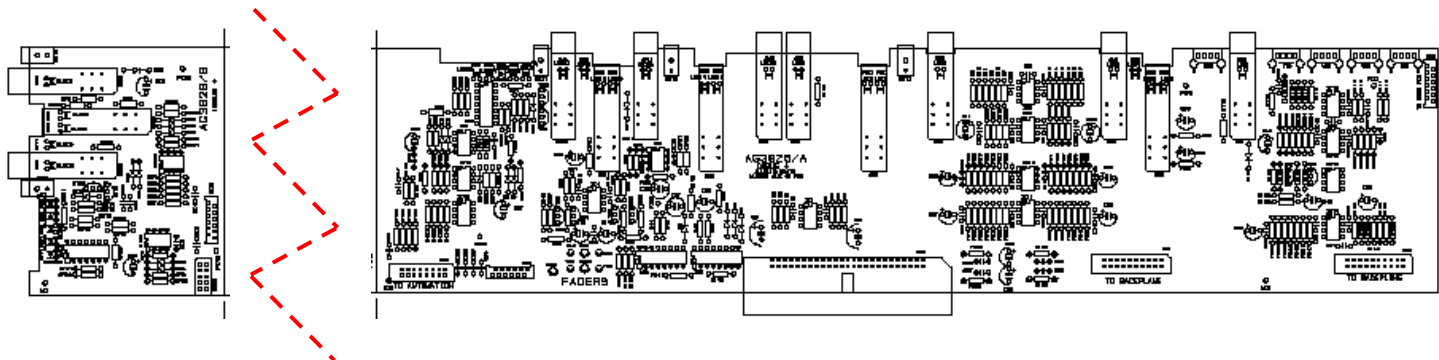


NOTE:
002-XXX is a break off from a biscuit of eight.

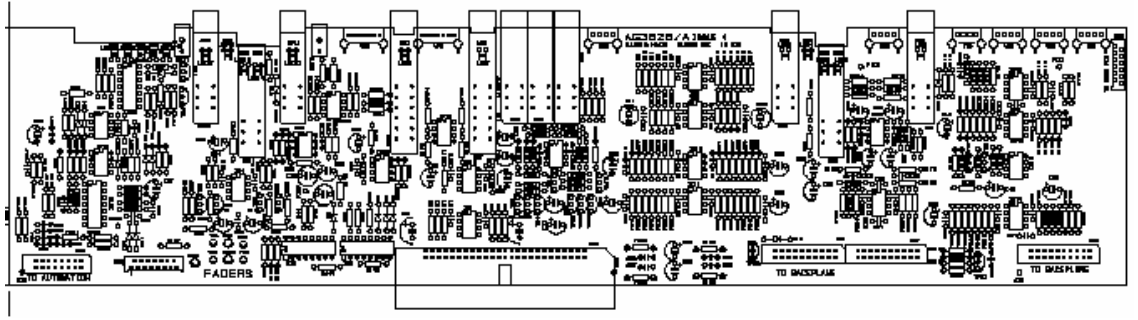
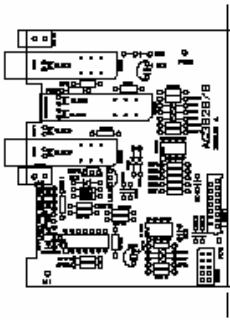
Group
002-553



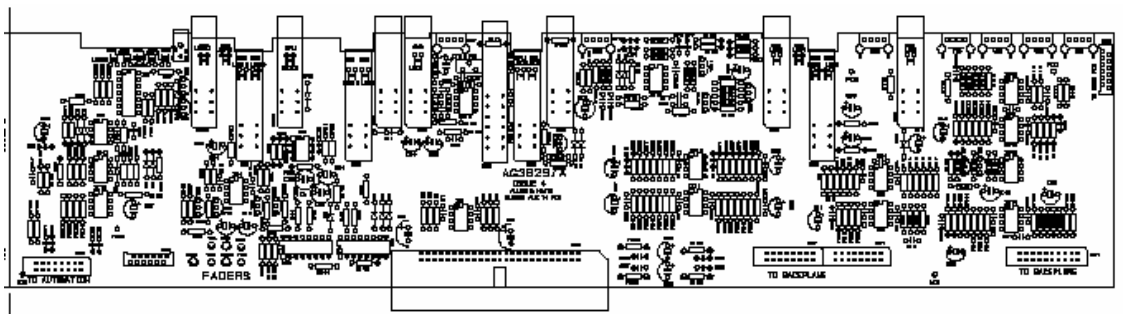
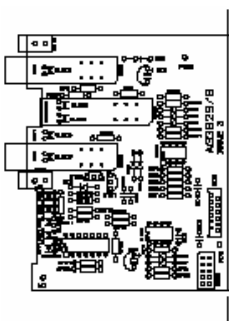
Group 2, 4, 6, 8
002-554



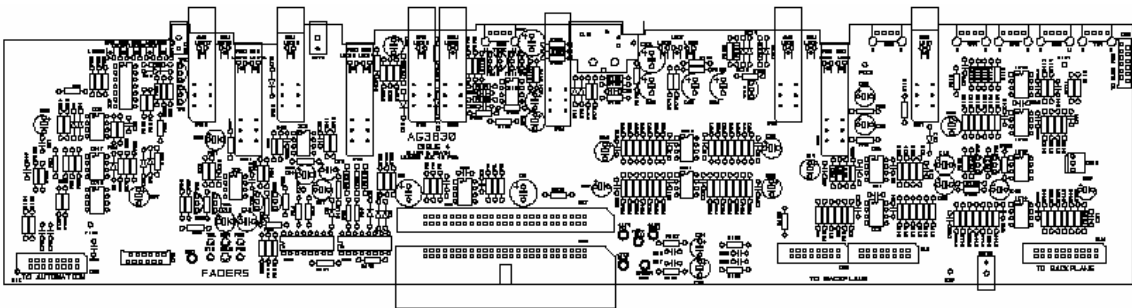
Aux 10
002-545



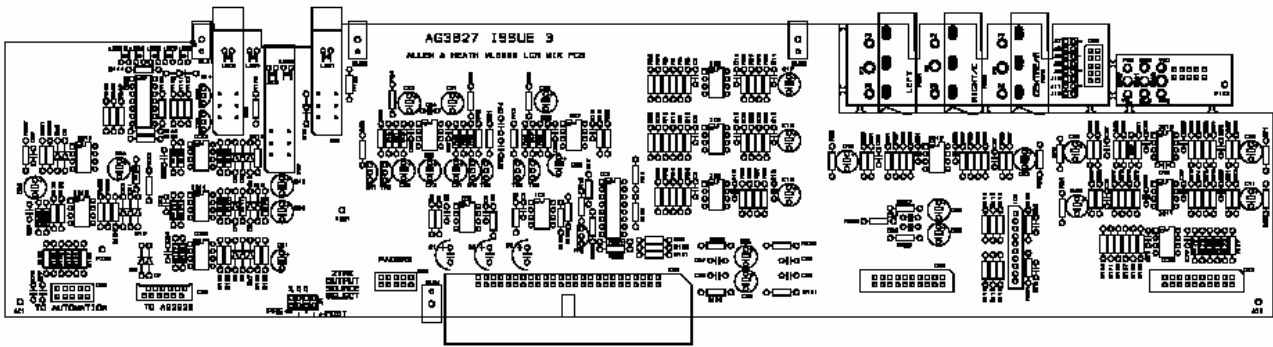
Aux 12
002-546



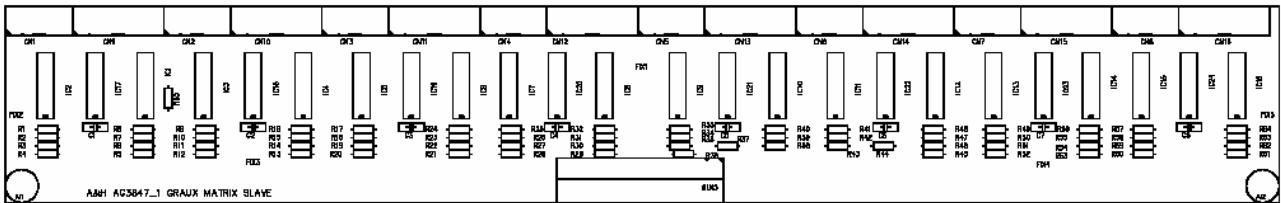
Aux 14
002-547



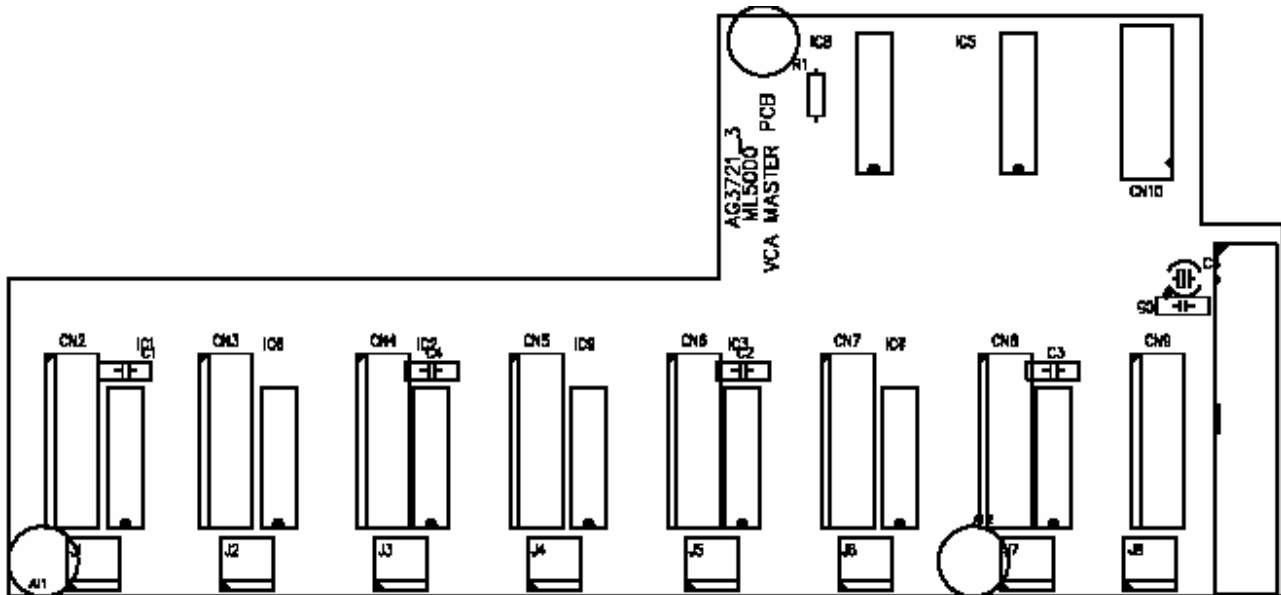
Aux 16
002-548



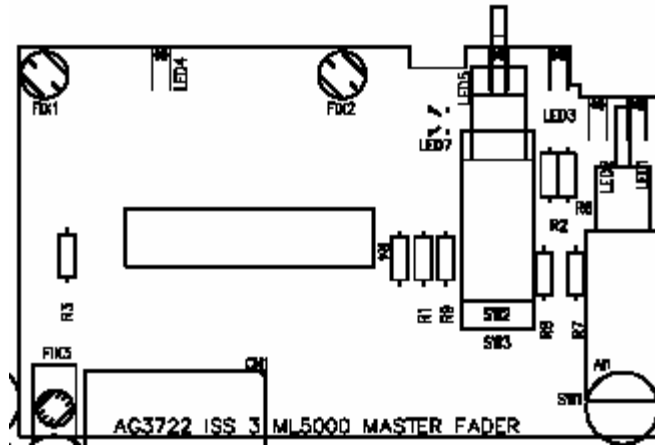
Mix LRC
002-544



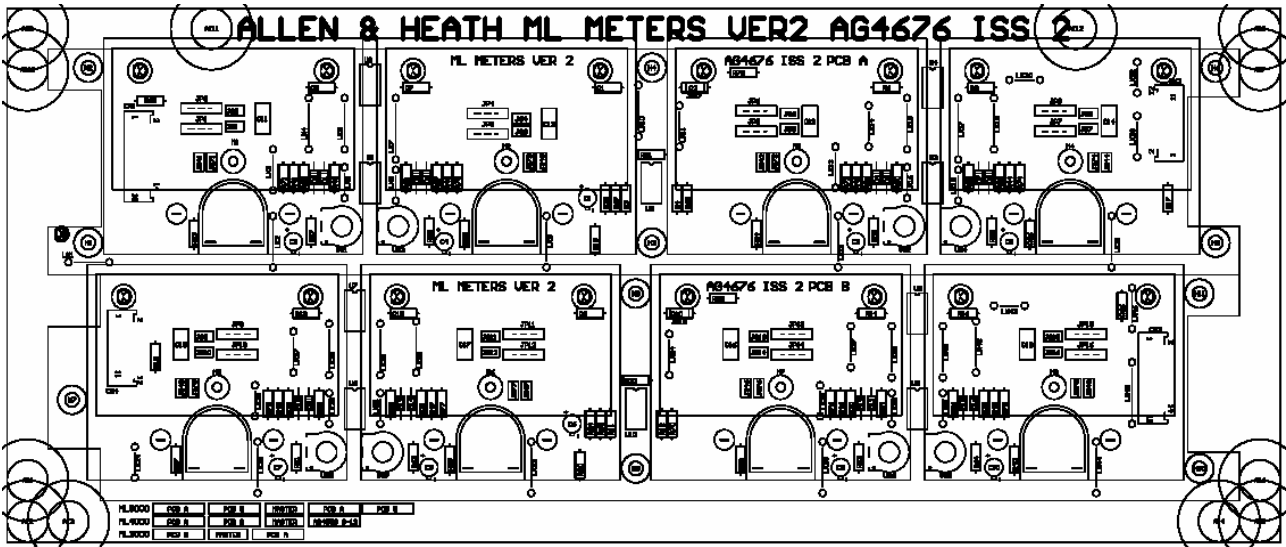
Aux master slave
002-543



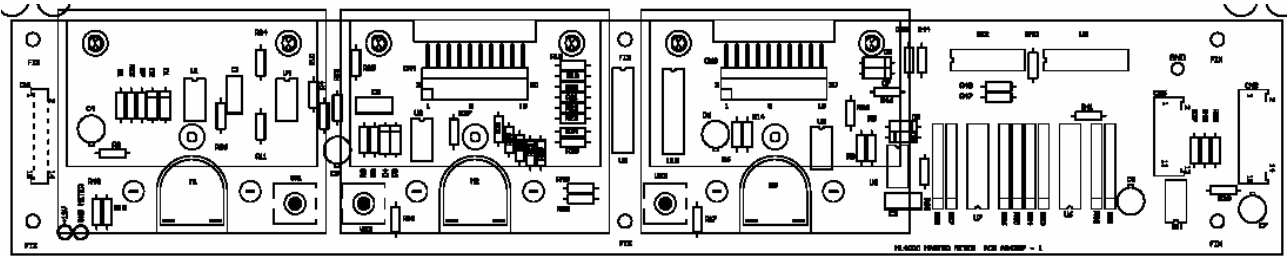
VCA master
002-567



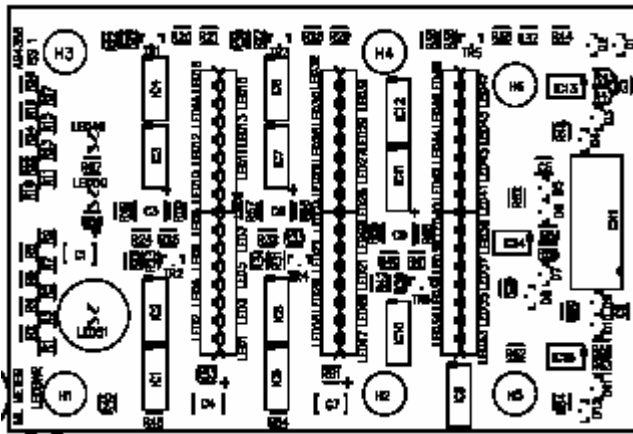
Master fader VCA 002-557
 Master fader L/R 002-588
 Master fader CTR 002-598



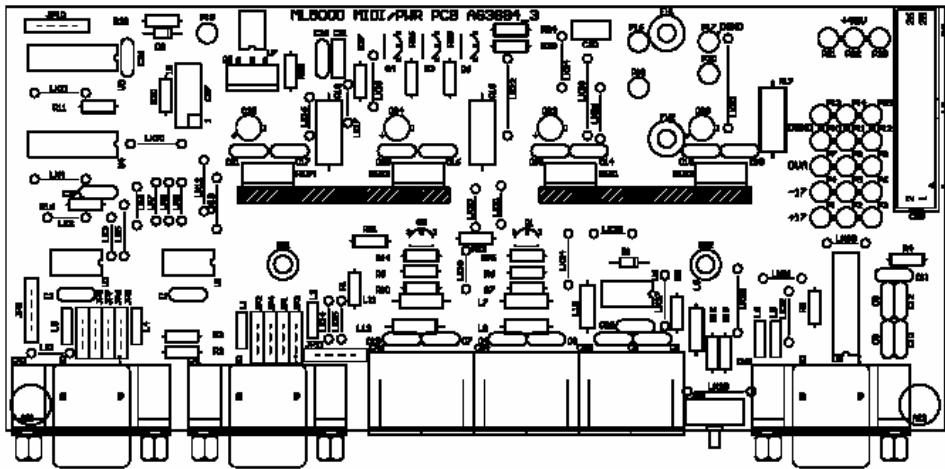
Meters 1-8, 9-16
 002-716



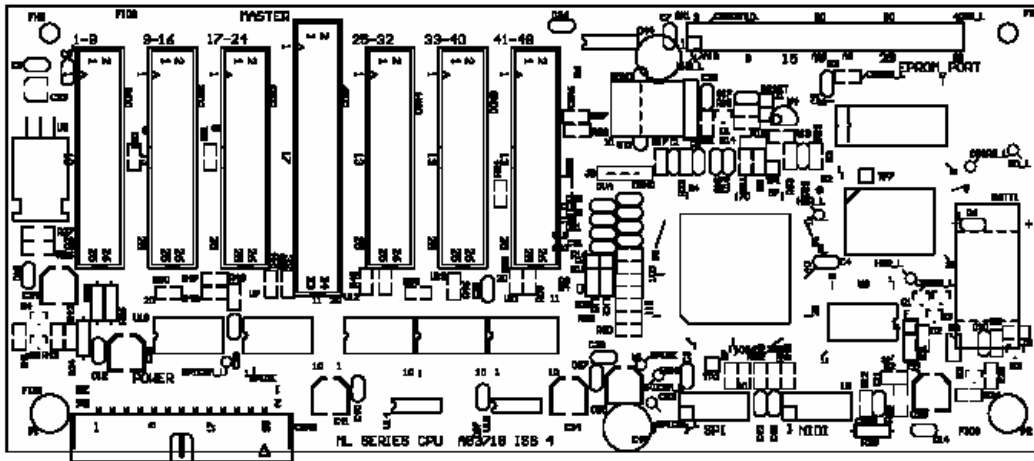
Master meters
002-714



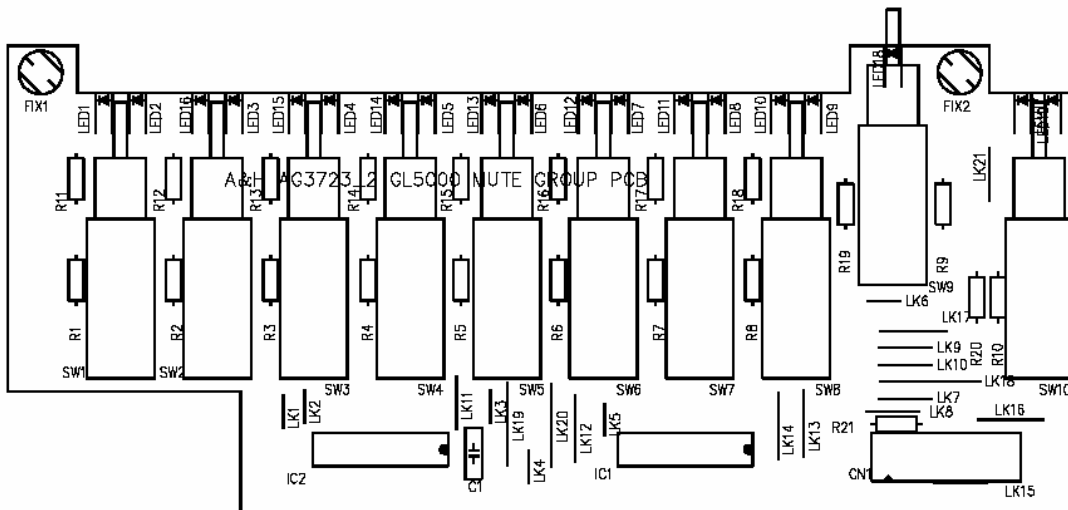
Meter LEDbar
002-713



MIDI power
002-575

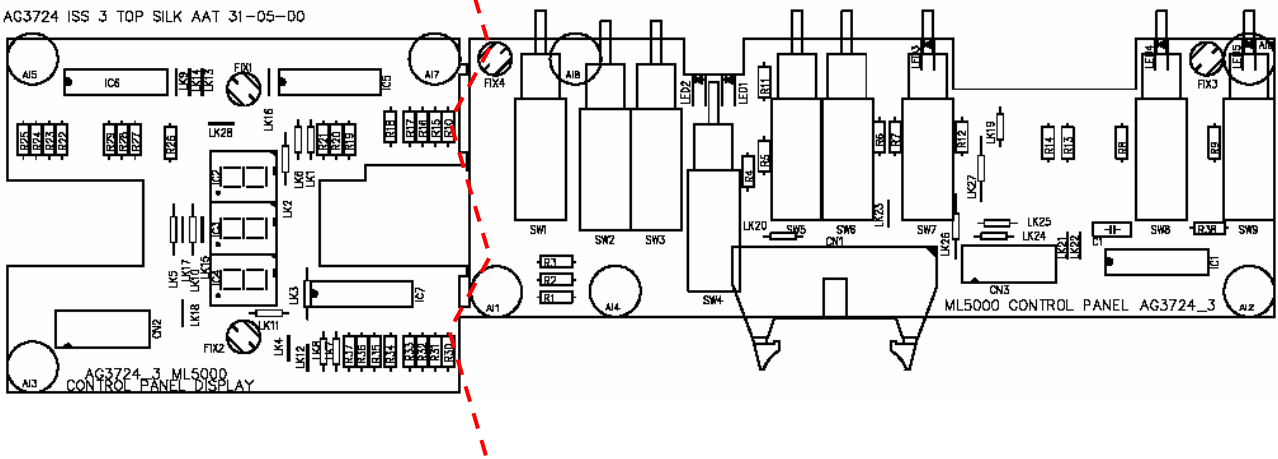


CPU
002-550



Mute group keyboard
002-563

AG3724 ISS 3 TOP SILK AAT 31-05-00



Control panel & display
002-549