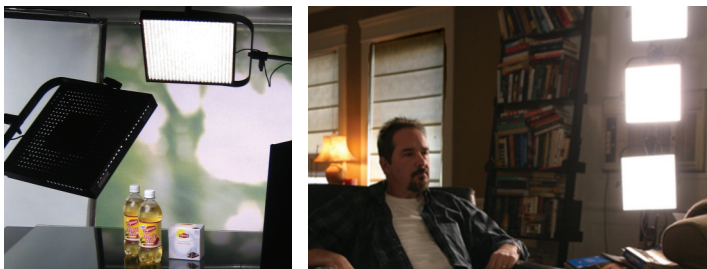


Litepanels 1 X 1™

The 1x1™ is the most versatile production light ever built. Combining Litepanels' hallmark LED technology in a sophisticated, slimline housing, these revolutionary modular lights provide 1'x1' of pure, luminous, soft, directional output.



The versatile 1x1 offers a multitude of applications from product commercials to episodic television

Highly Controllable

The 1x1 offers unprecedented lighting control. An ergonomic control knob on the back enables instant dimming from 100% to 0 with minimal color shift. Absolutely silent, flicker free and heat free, the system can be positioned comfortably close to a subject's face, filling it with an unmatched quality of soft, wrap-around light. For even more control, a set of 6 interchangeable slide-in conversion and diffusion filters are available in various configurations for both daylight and tungsten versions. Filters are sold individually.

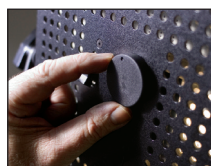
Power Efficient

Employing Litepanels' ultra-efficient LEDs, the system draws just 40 Watts @ 24V, yet outputs the equivalent of 500 Watts. The 1x1 is powered via an external 100-240VAC international adapter, which provides 24VDC to the unit. The 1x1 can also run off a variety of 18-28VDC sources, including a standard camera battery or car battery.

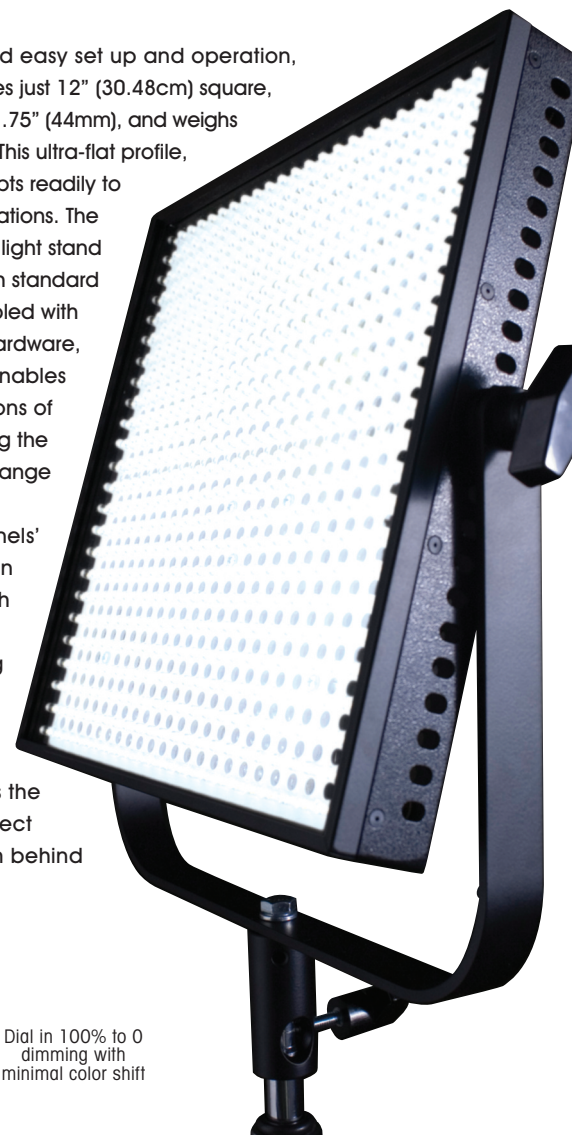
Square Deal

Designed for quick and easy set up and operation, Litepanels 1x1 measures just 12" (30.48cm) square, has a thickness of only 1.75" (44mm), and weighs a mere 3 lbs. (1.36kg). This ultra-flat profile, lightweight system adapts readily to a variety of lighting situations. The unit mounts easily on a light stand or tripod via a yoke with standard TVMP receptacle. Coupled with dedicated mounting hardware, the modular housing enables multipanel configurations of 2'x1' and 2'x2'—making the units able to fit a wide range of jobs.

In addition, Litepanels' groundbreaking design provides operators with a unique view-thru capability. The housing features an integrated pattern of hundreds of precisely aligned mini-portals. This offers the ability to view the subject being illuminated from behind the unit.



Dial in 100% to 0 dimming with minimal color shift



Litepanels 1x1 Bi-Color™

All in one: Control Tungsten & Daylight

Finally, ultimate color control right at your fingertips. A soft, high output light that lets you quickly dial up any color—from cool white daylight to warm white tungsten. The Litepanels 1x1 Bi-Color flood lets you adjust color temperature instantly so you can adapt to different shooting conditions and skin tones on the fly. Like all Litepanels 1x1 lights, the Bi-Color has a full-range dimmer, remains cool-to-the-touch, runs on AC or an optional snap-on battery, and produces a great, soft-wrapping light quality.

Litepanels 1x1 Bi-Focus™

All in one: Control Spot & Flood

Litepanels brings you the world's first electronic spot and flood light. So game changing that it's patented! The revolutionary 1x1 Bi-Focus features variable beam angle—either Flood/Spot or Spot/Super-Spot—all in a single 1'x1' square fixture.

With a simple turn of a dial, you can achieve infinitely variable flood or spot output. All in a 3 pound, cool-to-the-touch, super-thin, fit-anywhere fixture.



Litepanels Bi-Focus offers variable beam angles

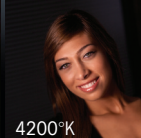


Litepanels 1x1 Bi-Color & Bi-Focus features:

- Extreme portability
- Dial-up brightness
- Runs on battery or AC
- 1'x1' square, 1.75" thick
- Cool-to-the-touch
- Ultra-lightweight, 3 lbs. (1.36kg)
- Integrated DMX
- Fits where other lights cannot go
- Snap-on battery option for wireless lighting
- Draws under 10% power of conventional lights



5600°K Daylight Balanced



4200°K



3200°K Tungsten Balanced



Variable focus dial

Litepanels 1 X 1™

- ✓ *World's most versatile light source*
- ✓ *Lightweight plus battery option*
- ✓ *Variable color and variable focus models*

Multiple Options

Litepanels 1x1s are available as single daylight or tungsten fixtures. Optional accessories, including battery adaptor plates for Gold-Mount or V-Mount style batteries and optional correction/diffusion gels, may be purchased separately. All 1X1s include the following: Fixture, Yoke, AC Power Supply with power cord and a Power Supply Mounting Bracket.

Remote Dimming Module

With Litepanels' optional wired Remote Dimming Module, operators can override the 1x1 on-board dimmer at distances from 25', an invaluable capability when the situation calls for making adjustments in intensity away from the fixture.

Wired Remote Dimming Module



Interchangeable slide-in color correction/diffusion filters offer greater lighting control



Mounts easily on stands via yoke with standard TVMP Receptacle

Litepanels 1x1 Battery Adapter Plate

Litepanels Battery adapter plate mounts easily and unobtrusively on the rear of the Litepanels 1x1. Litepanels offers battery adapter plates for both V-mount style batteries (Sony & IDX) and Anton Bauer Gold Mount batteries. Using Sony or Anton Bauer (14.4V) camera batteries, the unit attaches in seconds to provide up to 2 hours of run time.

Advantages

- Only 1.75" (4.4cm) thick
- Ultra-lightweight & portable
- 12" (30.48cm) square
- Runs on AC adapter or battery
- Heat free and flicker free
- Dims 100% to 0 with minimal color shift
- Remote dimmer available
- Modular design for multipanel configuration
- 5600°K daylight or 3200°K incandescent versions
- 50,000+ hours of LED life
- View-thru to see the talent
- Ballast-free

Specifications:

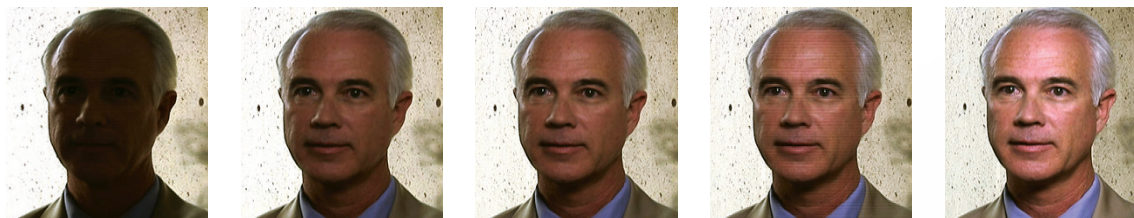
Size: 12" x 12" x 1.75" (30.48cm x 30.48cm x 4.4cm)
 Weight: 3 lbs. (1.36kg)
 Power Draw: 40 Watts @ 24V, 45 Watts @ 12V
 Power Supply: 18-28V, AC Adapter 100-240V



Optional accessories for 1x1s include barn-doors & honeycomb lighting grids in 30°, 45°, 60° & 90°



2'x2' configuration



Litepanels lets you dial up lighting ratios via their integrated dimmer with minimal color shift, something you can't do with fluorescent fixtures!

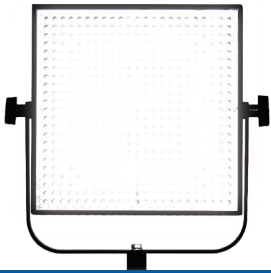


Multiple models to suit every need

4-Lite rolling Carrying Case with built-in trolley for up to 4 1x1s and accessories



LITEPANELS 1X1 STANDARD: AVAILABLE IN 5600°K FLOOD & SPOT, AND 3200°K FLOOD



The Workhorse—Battery & AC powered 1x1

Litepanels' lightweight, ultra-flat profile 1x1 is the most versatile production light ever built. Designed for quick set up and operation, the fixture mounts easily overhead—or elsewhere—to bathe a studio in soft, directional, luminous output. Its modular housing can be combined into 2'x1' and 2'x2' multi-panel configurations to fit a wide range of jobs. What's more, the battery option allows for location shooting without generators or power cables.

Flood Models

Distance

4 ft. / 1.2m
8 ft. / 2.4m
12 ft. / 3.6m

Footcandles

130
34
14

LUX

1400
370
160

5600°K Spot

Distance

4 ft. / 1.2m
8 ft. / 2.4m
12 ft. / 3.6m

Footcandles

160
52
20

LUX

1700
560
210

LITEPANELS 1X1 BI-COLOR: VARIABLE COLOR TEMPERATURE



All in one—Control Tungsten & Daylight

Litepanels Bi-Color™ gives you ultimate color control at your fingertips. A soft, high output light that lets you quickly dial up any color—from cool white daylight to warm white tungsten. It lets you adjust color temperature instantly so you can adapt to different shooting conditions and skin tones on the fly. Like all Litepanels 1x1 lights, the Bi-Color has a full-range dimmer, remains cool-to-the-touch, runs on AC or an optional battery, and produces a great, soft-wrapping light quality.

Distance

4 ft. / 1.2m
8 ft. / 2.4m
12 ft. / 3.6m

Footcandles

130
34
14

LUX

1400
370
160

LITEPANELS 1X1 BI-FOCUS: VARIABLE FLOOD/SPOT (50°/30°) & SPOT/SUPER-SPOT (30°/15°)



All in one—Electronically Controlled Spot & Flood

The world's first electronic spot and flood light. So game changing that it's patented, the revolutionary 1x1 Bi-Focus™ features two complete groups of Litepanels' proprietary daylight LEDs—one set of spot and one set of flood—in a single 1'x1' square fixture. With a simple turn of a dial, you crossfade between the two sets to achieve infinitely variable flood or spot output. All in a 3 pound, cool-to-the-touch, super-thin, fit-anywhere fixture.

Flood

Distance

4 ft. / 1.2m
8 ft. / 2.4m
12 ft. / 3.6m

Footcandles

130
34
9.2

LUX

1400
370
160

5600°K Spot

Distance

4 ft. / 1.2m
8 ft. / 2.4m
12 ft. / 3.6m

Footcandles

140
53
13

LUX

1500
560
140

Spot/Super-Spot

Distance

4 ft. / 1.2m
8 ft. / 2.4m
12 ft. / 3.6m

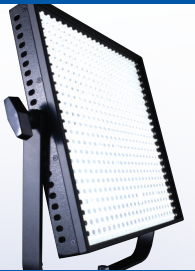
Footcandles

210
64
32

LUX

2200
690
340

LITEPANELS 1X1 SUPER-SPOT: 5600°K WITH 15-DEGREE BEAM ANGLE



Tight, Long Throw—With NO Spill

While the standard 1x1 Spot focuses the 5600°K beam to 30 degrees, the Super-Spot further focuses the output to a 15-degree beam which concentrates the light in a smaller area and provides a longer throw of the light. Like all Litepanels fixtures, the 1x1 Super-Spot is cool-to-the-touch and uses a small fraction of the power used by traditional lighting fixtures.

Distance

4 ft. / 1.2m
8 ft. / 2.4m
12 ft. / 3.6m

Footcandles

210
64
32

LUX

2200
690
340

LITEPANELS 1X1 LOW-PROFILE: TAKES UP ONLY 3" OF HEADROOM



Ideal for Tight Spaces & Video Conferencing

Reconfigured versions of the standard Spot, Flood, and Super-Spot designed to mount horizontally against a ceiling or wall. Since the LED bulbs on the Low-Profile are tilted at 40 degrees off axis, the light is uniquely projected forward from the fixture to softly light the subject, and is ideal for low headroom shooting situations. The Low-Profile draws little power and can be operated off 12VDC available in a car or bus.

Available in Flood (5600°K & 3200°K), as well as Spot and Super-Spot configurations (5600°K). See data above.

