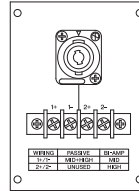
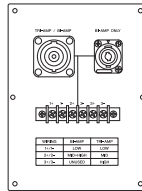


Installation Series

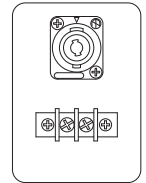
Speaker System



IF3115 IH2000



IL1115



Choose a three-way full-range system or separate mid/high and low-frequency units to match your system requirements.

IF3115 Three-way Speaker

- Sound and phase characteristics matched with all other Installation Series models.
- 15" low-frequency driver, 8" midrange driver, and 3" high-frequency compression driver with 1.4" exit.
- Two horn dispersion patterns available: 60° x 40° and 90° x 50°.
- Horn can be rotated 90-degrees for vertical or horizontal mounting.
- Switchable between bi-amp and tri-amp operation.
- Fifteen 10mm-screw suspension points (M10) provided for flexible rigging.
- Durable black or white finish (can be painted to match any interior).
- Optional matching array frame available.
- Parallel-wired Neutrik NL8 and barrier strip connectors.

IH2000 Mid/High Unit

- Sound and phase characteristics matched with all other Installation Series models.
- 8" midrange driver and 3" high-frequency compression driver with 1.4" exit.
- Two horn dispersion patterns available: 60° x 40° and 90° x 50°.
- Horn can be rotated 90-degrees for vertical or horizontal mounting.
- Switchable between passive and bi-amp operation.
- Fifteen 10mm-screw suspension points (M10) provided for flexible rigging.
- Durable black or white finish (can be painted to match any interior).
- Optional matching array frame and U-bracket available.
- Parallel-wired Neutrik NL4 and barrier strip connectors.

IL1115 Low-frequency Unit

- Sound and phase characteristics matched with all other Installation Series models.
- 15" low-frequency driver.
- Thirteen 10mm-screw suspension points (M10) allow flexible rigging.
- Durable black or white finish (can be painted to match any interior).
- Optional matching array frame and U-bracket available.
- Parallel-wired Neutrik NL4 and barrier strip connectors.

OPTIONS

Accessories

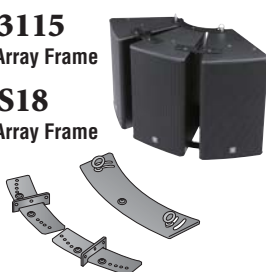
Durable black or white finish as well as Installation series speaker, which can be painted to match any interior.

HAF3-3115

Horizontal Array Frame

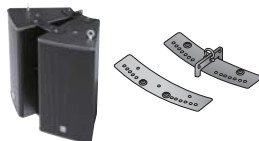
HAF3-S18

Horizontal Array Frame



HAF2-3115

Horizontal Array Frame



VAF2-3115

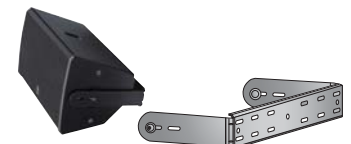
Vertical Array Frame



UB2000

U-Brackets

*available for IH2000 and IL1115



Download the Rigging Guide from Yamaha's website for rigging details:

<http://www.yamahaproaudio.com/>

Installation Series

GENERAL SPECIFICATIONS

Model	IF3115/64(W)		IF3115/ 95(W)	
Nominal coverage @-6dB (Horizontal x Vertical)	60 x 40 (rotatable)		90 x 50 (rotatable)	
Nominal impedance	Bi-amp	LF	8Ω	
		MF&HF	8Ω	
	Tri-amp	LF	8Ω	
		MF HF	8Ω 8Ω	
Power rating ^{*1}	Bi-amp	NOISE	LF:700W, MF&HF:125W(2 hours, IEC)	
		PGM	LF:1400W, MF&HF:250W(2 hours, IEC)	
		MAX	LF:2800W, MF&HF:500W(2 hours, IEC)	
	Tri-amp	NOISE	LF:700W, MF:125W, HF:110W	
PGM		LF:1400W, MF:250W, HF:220W		
MAX		LF:2800W, MF:500W, HF:440W		
Sensitivity (1W, 1m)	Bi-amp	LF	97dB SPL	
		MF&HF	106dB SPL	
	Tri-amp	LF	97dB SPL	
		MF HF	106dB SPL	
Continuous SPL (calculated)	Bi-amp	LF	125dB SPL	
		MF&HF	127dB SPL	
	Tri-amp	LF	125dB SPL	
		MF HF	127dB SPL	
Peak SPL (calculated)	Bi-amp	LF	131dB SPL	
		MF&HF	133dB SPL	
	Tri-amp	LF	131dB SPL	
		MF HF	133dB SPL	
Components	LF	15" woofer, 4" voice coil		
	MF	Rotatable constant directivity horn, 2" voice coil, 8" driver		
	HF	Rotatable constant directivity horn, 1.4" exit, 3" voice coil compression driver		
		45Hz-20kHz Tri-amp mode		
Frequency range (-10dB) ^{*2}	45Hz-20kHz Tri-amp mode			
Passive Crossover Frequency ^{*3}	1.8 kHz, MF/HF section in Bi-amp mode		1.9 kHz, MF/HF section in Bi-amp mode	
Connectors	1x NL8, 1x NL4 and barrier strip, wired in parallel			
Shape	30 degrees trapezoidal			
Dimensions (W x H x D)	610 x 1006 x 600mm (24.0" x 39.6" x 23.6")			
Weight	64.0kg (141.0lbs)			
Flying hardware	15x M10			
Optional accessories	HAF2-2115(W), HAF3-3115(W), HAF3-S18(W), VAF2-3115(W)			

*1 AES *2 Yamaha recommended DSP configuration, full-space *3 At this frequency, the transducers produce equal sound pressure levels.

Model	IH2000/64(W)		IH2000/95(W)		IL1115(W)	
Nominal coverage @-6dB (Horizontal x Vertical)	60 x 40 (rotatable)		90 x 50 (rotatable)		-	
Nominal impedance	Passive		8Ω		-	
	Bi-amp MF/HF		MF:8Ω, HF:8Ω		-	
Power rating ^{*1}	Passive	NOISE	125W(2 hours, IEC)		700W	
		PGM	250W(2 hours, IEC)		1400W	
		MAX	500W(2 hours, IEC)		2800W	
	Bi-amp MF&HF	NOISE	MF:125W, HF:110W		-	
		PGM	MF:250W, HF:220W		-	
		MAX	MF:500W, HF:440W		-	
Sensitivity (1W, 1m)	Passive	106dB SPL		97dB SPL		
	Bi-amp	MF	106dB SPL		-	
		HF	110dB SPL		108dB SPL	
	Continuous SPL (calculated)	Passive	127dB SPL		125dB SPL	
Bi-amp		MF	127dB SPL		-	
		HF	130dB SPL		128dB SPL	
Peak SPL (calculated)		Passive	133dB SPL		131dB SPL	
	Bi-amp	MF	133dB SPL		-	
		HF	136dB SPL		134dB SPL	
	Components	LF	-		15" woofer, 4" voice coil	
MF		Rotatable constant directivity horn, 2" voice coil, 8" driver		-		
HF		Rotatable constant directivity horn, 1.4" exit, 1.7" voice coil compression driver		-		
		200Hz-20kHz Bi-amp mode		45Hz-2.5kHz		
Frequency range (-10dB) ^{*2}	1.8 kHz		1.9 kHz		-	
Passive Crossover Frequency ^{*3}	1.8 kHz		1.9 kHz		-	
Connectors	1 x NL4 and barrier strip, wired in parallel					
Shape	30 degrees trapezoidal					
Dimensions (W x H x D)	610 x 591 x 600mm (24.0" x 23.3" x 23.6")				610 x 591 x 600mm (24.0" x 23.3" x 23.6")	
Weight	33.0kg (72.8lbs)				38.0kg (83.8lbs)	
Flying hardware	15x M10					
Optional accessories	UB2000(W), HAF2-3115(W), HAF3-3115(W), HAF3-S18(W), VAF2-3115(W)					

*1 AES *2 Yamaha recommended DSP configuration, full-space *3 At this frequency, the transducers produce equal sound pressure levels.

DIMENSIONS

unit : mm (inch)

Center of balance

