



sansa clip zip™

MP3 Player

Sansa® Clip Zip™ User Manual
Issue: August 24, 2011
America Edition



SanDisk®

▶▶ Table of Contents

CHAPTER 1	1
Safety Tips & Cleaning Instructions.....	1
Disposal Instructions.....	1
CHAPTER 2	2
Sansa Clip Zip MP3 Player Overview.....	2
Features.....	2
Minimum System Requirements	2
Package Contents	3
Sansa® Clip Zip™ MP3 Player at a Glance	3
Main Menu Options: 7 Core Functions.....	5
Product Capacities:	6
Playback Screen	6
Battery	6
Charging	7
Firmware Updater.....	7
USA ONLY- Starter CD.....	8
CHAPTER 3	9
Basic Usage	9
Power Button	9
Power On.....	9
Power Off	9
Lock Function.....	9
Reset	9
Connecting to your Computer: PC Users	10
Connecting to your Computer: MAC Users	12
Chapter 4.....	14
Music.....	14
Loading Music	14
Drag and Drop (Windows)	14
Drag and Drop (Mac)	14
Windows Media® Player (Windows® Only)-.....	15
Adding Music Files to Library	15
Creating Playlists.....	16
Transferring Playlists.....	17
Music Providers Alternatives.....	18
AAC Details.....	18
Playing Music	18
Options Menu:.....	19
CHAPTER 5	21

▶▶ Table of Contents

FM Radio	21
Listening to FM Radio	21
Programming FM Presets	21
Recording FM Radio	22
Chapter 6	23
Books	23
Loading Audiobooks and Podcasts.....	23
Playing Audiobooks and Podcasts.....	23
Chapter 7	25
Voice	25
Voice Recording.....	25
Playback Recordings	25
Chapter 8	26
Card	26
microSDHC™ card with content	26
Chapter 9	28
Sport	28
Timing and Laps	28
Chapter 10	30
Settings	30
Music Options.....	30
Repeat	30
Shuffle	30
Audiobook Options and Podcast Options	30
Ch. Mode (Chapter Mode)	30
Speed	30
Radio Options	31
Delete All Presets	31
FM Region	31
FM Mode.....	31
System Settings	31
Background	31
Backlight	31
Brightness	31
Power Saver	31
Sleep	32
Language	32
Customize	32

▶▶ Table of Contents

Equalizer	32
Replay Gain	32
Language	32
Menu Looping.....	32
Date	33
Time	33
Volume	33
Reset Factory Settings	33
Info	33
USB Mode.....	33
Chapter 11.....	35
Tips & Troubleshooting.....	35
Chapter 12.....	37
Learn More, Service, and Warranty Information	37
Getting Technical Support.....	37
THIRD PARTY INTELLECTUAL PROPERTY NOTICE	37
SanDisk Manufacturer’s Limited Warranty	38
End-User License Agreement.....	39
FCC REGULATION	41

CHAPTER 1

This chapter provides you the safety tips and cleaning instructions for your Sansa® Clip Zip™ MP3 player.

Safety Tips & Cleaning Instructions

Read the safety instructions carefully before using your Sansa® MP3 player.

1. Read this entire manual to ensure proper usage.
2. Keep this User Manual for future reference.
3. Do not use headphones/earphones while driving, cycling, or operating any motorized vehicle. This may create a traffic hazard and may be illegal in some areas. It can also be dangerous to play your music with headphones/earphones at high volume while walking, or engaged in other activities. You should exercise extreme caution and discontinue use in potentially hazardous situations.
4. Avoid using headphones/earphones at high volume. Hearing experts advise against continuous loud and extended music play. Keep the volume at a moderate level, so that you are better able to hear outside sound and are considerate of the people around you.
5. Keep your player away from sinks, drinks, bathtubs, showers, rain, and other sources of moisture. Moisture can cause electric shocks with any electronic device.
6. Follow these tips to keep your player working well for a long time:
 - Clean your player with a soft lint-free cloth.
 - Do not allow young children to use your player unsupervised.
 - Never force any connector into the ports of your player or your computer. Make sure your connectors are the identical shape and size before you connect.
 - Do not disassemble, crush, short-circuit or incinerate the internal rechargeable battery as it may cause fire, injury, burns or other hazards.

Disposal Instructions

Do not dispose of this device with unsorted waste. Improper disposal may be harmful to the environment and human health. Please refer to your local waste authority for information on return and collection systems in your area for proper disposal of electronic products, components, and accessories.

CHAPTER 2

This chapter helps you familiarize yourself with the features and functionality of your Sansa® Clip Zip™ MP3 player.

Sansa Clip Zip MP3 Player

Overview

Congratulations on your purchase of a Sansa® Clip Zip™ MP3 player!

Because your favorite songs always take you places, SanDisk has created the ultimate on-the-go music experience. As the newest addition to the acclaimed Sansa Clip product family, the Sansa Clip Zip MP3 player boasts a bigger screen now 1.1" with color, expandable memory card slot, added stopwatch, recordable FM radio, a built-in rechargeable battery which can last up to 15 hours* during typical use, and playback of nearly every possible format including AAC compatible files (DRM-free iTunes). This feature-rich player is perfect to guide you to the finish or accompany you along your journey.

*Based continuous playback at 128 kbps MP3; actual life and performance may vary depending upon usage and settings; battery not replaceable.

Features

- **Music player:** Plays your favorite music content from nearly every source (MP3, WMA, secure WMA, Ogg Vorbis, Flac), AAC (DRM-free iTunes).
- **FM radio:** Includes an integrated FM radio with digital tuner for listening to live-broadcast FM radio programs.
- **Books:** Plays your favorite content including audiobooks and podcasts.
- **Voice recorder:** Supports voice recording function with built-in microphone.
- **Card:** Enables the addition of a microSDHC™ card for additional storage (card sold separately).
- **Sport:** Includes a new stopwatch feature that has the ability to save logs and times.
- **Settings:** Controls your own personal settings.
- **Additional Features:** *Internal memory* stores data on the internal memory of the device and *supports gapless playback* as a music feature to ensure no pausing or dead spots between songs (live show recordings or DJ music).

Minimum System Requirements

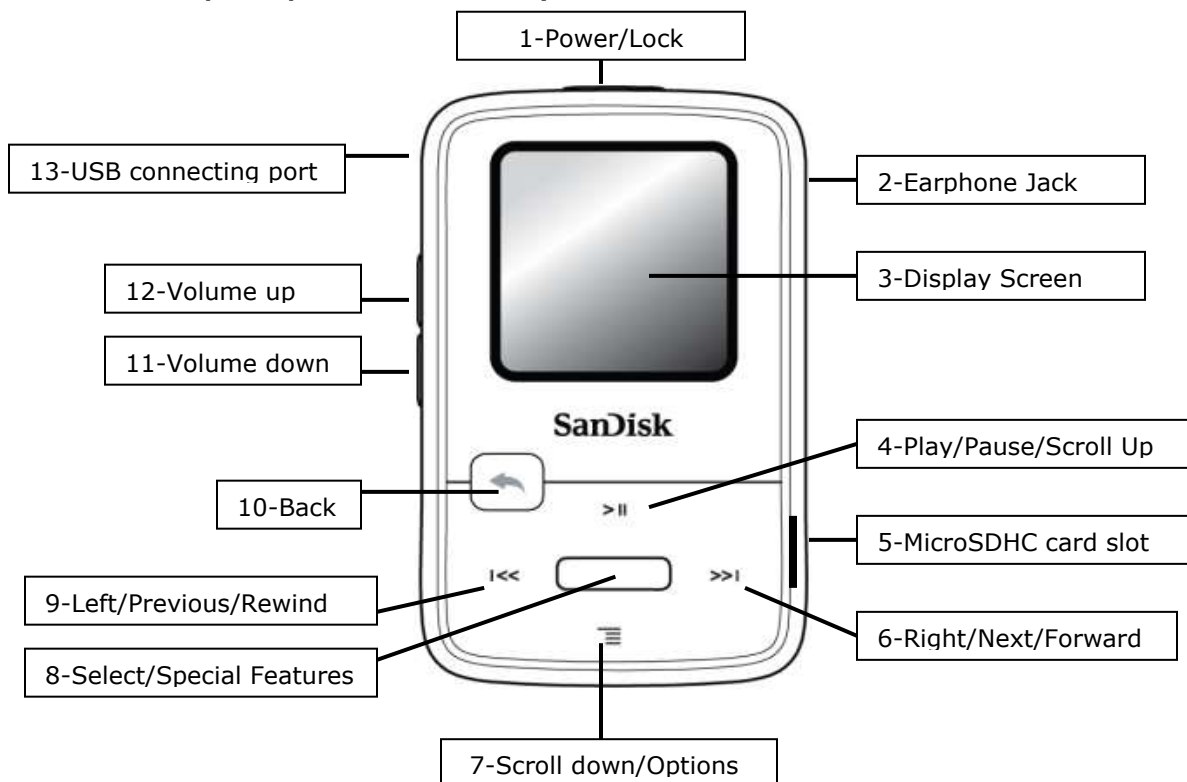
- Windows® XP SP2 or Mac OS® X 10.3 and Linux (mass storage class only)
- Windows Media® Player 10 (for playlist creation and synchronizing library and device)
- CD-ROM drive (for installation of bundled applications)
- USB 2.0 port (for hi-speed transfers and charging)
- Internet access (for downloading firmware updates)



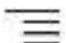
Package Contents

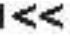

Please unpack your **Sansa® Clip Zip™ MP3 Player** and check that the following were included:

- Sansa Clip Zip MP3 player
- Earphones
- USB 2.0 Cable
- Quick Start Guide
- Starter CD (US only)

Sansa® Clip Zip™ MP3 Player at a Glance



1	On/Off Power Button and Lock	Press-and-hold to turn the player on/off or quick press for lock
2	Earphone Jack	Connect earphones here to listen
3	Display screen	See the information and status here
4	 Play/Pause/Scroll up	Press to move up one item, play, or pause
5	microSDHC™ card slot	Insert microSDHC™ card here
6	 Right/Next/Forward	Press for next track, fast forward, or move right
7	 Scroll down/Options	Press to move down or to open sub-menu options (playback screen)

8	Select/Special Features	Press to select the item; on playback screen, double click select to view album art
9	 Left/Previous/Rewind	Press for previous track, rewind, or move left
10	 Back	Press and Hold to return to the Main Menu; press once to go back
11	Microphone	Built-in microphone for voice recording
12	USB Connecting Port	Plug USB cable here to connect to the computer and charge Clip Zip™
13	Volume Up	Press to turn up the volume
14	Volume Down	Press to turn down the volume
15	Clip	Attach player to clothes, a bag, or other convenient places



Quick Tip: Select Button Special Features Include-

1. Press and hold to add/remove to "Go-List" while a song is highlighted.
2. Press and hold to add/remove from presets while FM station is highlighted.
3. Double-click in menu to accelerate scrolling from A-Z.

Main Menu Options: 7 Core Functions



Music – browse and listen to artists, albums and playlists



Radio – listen to FM broadcast radio and save presets



Books – browse and listen to audiobooks and podcasts



Voice – record voice using built-in microphone



Card – insert microSD™ or microSDHC cards



Sport – functioning timer with the ability to save logs and view log details



Settings – view or customize the Sansa player features

Product Capacities:

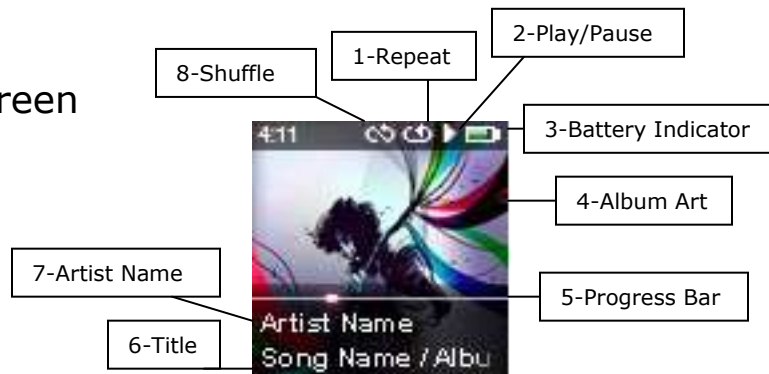
Sansa® Clip Zip™	4 GB**	8 GB**
Number of Songs** (3.5 min)	Up to 1,000	Up to 2,000

Notes:

** 1 gigabyte (GB) = 1 billion bytes. Some capacity is not available for data storage.

** Approximations: results will vary based on file size, compression, bit rate, content, host device, pre-loaded files and other factors. See www.SanDisk.com

Playback Screen



1 Repeat	Indicates that the Repeat function is enabled
2 Play/Pause	Displays the music or recording playback status
3 Battery Indicator	Displays the battery status
4 Album Art	Displays the picture of the Album Art of currently playing content
5 Progress Bar	Displays the progress of the current track
6 Title	Displays the track name
7 Artist Name	Displays the artists name
8 Shuffle	Indicates that the Shuffle function is enabled

Battery

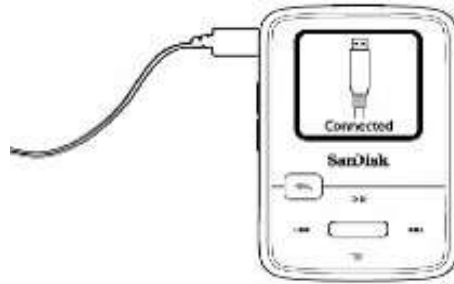
The Sansa Clip Zip MP3 player comes with an internal rechargeable battery. To use the player for the very first time, remember to fully charge the battery. You can charge your Sansa player through the USB port of your computer, a car adapter (not included), or AC adapter (not included).

The Sansa Clip Zip MP3 player comes with a built-in rechargeable battery which can last up to 15 hours during typical use.*

Charging

To charge the battery, please follow these steps:

1. Before using your player, fully charge your device. Connect device to PC (PC has to be on).
2. A connected icon will appear on the device (see below) once the minimum charge has been established, which can take up to 30 minutes if battery is fully drained. Full charge takes up to three hours.



3. To stop charging, unplug device. Battery indicator will be completely green when fully charged.



Quick Tips: Do not worry the battery **CANNOT** be overcharged.

If your computer does not recognize your device, make sure you have Windows Media® Player version 10 or higher installed. You can also change the **USB Mode** to **MSC** if you do not have Windows Media Player. For Mac, ensure that **USB Mode** is set to **Auto Detect** or **MSC** mode. The change to MSC mode can be made in System Settings under the Main System category from USB mode.

*Based on continuous playback at 128 Kbps MP3; actual life and performance may vary depending upon usage and settings; battery not replaceable.



Quick Tips:

1. Ensure that your Sansa® Clip Zip™ MP3 player is fully charged before operating it for the first time.
2. Some low-power USB ports may not be able to provide enough charge power. Also note that the rechargeable battery included inside the player is not replaceable.

Firmware Updater

Firmware is the code that powers your Sansa Clip Zip MP3 player. SanDisk occasionally releases firmware updates, which may include new features and performance enhancements. SanDisk highly recommends updating the MP3 player to the latest firmware.

For the latest firmware, visit www.sandisk.com/clipzip

1. Click on the banner, "Download Firmware Updater."
2. Click on the downloader file and press "run".

3. Follow the step-by-step instructions to upgrade the firmware.
4. Restart your device once completed.



Quick Tips: After the first download, the Updater will automatically notify you of any new firmware updates. User manual is also available via the Updater.

USA ONLY- Starter CD

Starter CD has both a Rhapsody Software link, which enables you to download Rhapsody Client and the Sansa firmware updater download link. The installer app on the CD also has a link that when clicked, will open your browser and take you to the webpage of where you download the Sansa Updater.

Rhapsody is a subscription music service that gives you access to millions of songs. You can download anything in the catalog to your new MP3 player, as long as you remain a member. www.rhapsody.com.sansaclipzip . Rhapsody terms and conditions apply.

CHAPTER 3

This chapter provides you the basic usage instructions for your Sansa® Clip Zip™ MP3 player.

Basic Usage

Power Button

The power button is located on the top of the player. It can be used to turn the player on or off, lock or unlock the buttons, or reset the player.

Power On

PRESS and HOLD the **Power** button for a few seconds to turn on the player. The last played function screen from the Main Menu will appear after the device has been booted up.

Power Off

PRESS and HOLD the **Power** button for a few seconds to turn off the player.

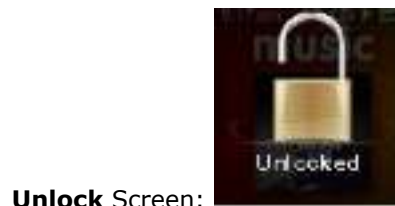
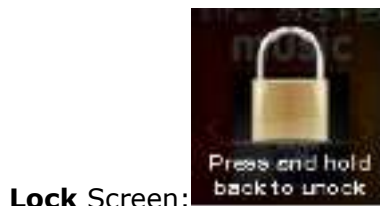
Lock Function

All function keys except volume control are disabled when the **Lock** feature is engaged by quickly pressing the **Power/Lock** button once while the player is powered on. Please note that the **Lock** function only works when the player is on.



Quick Tips: Volume adjustments can still be manipulated when device is in Lock Mode.

The following message will appear on the display screen if any buttons are pressed while the player is in the locked position. Music will continue to play even if the player is locked.



To Unlock the player, quickly press the Power/Lock button until an “Unlocked” message appears.

Reset

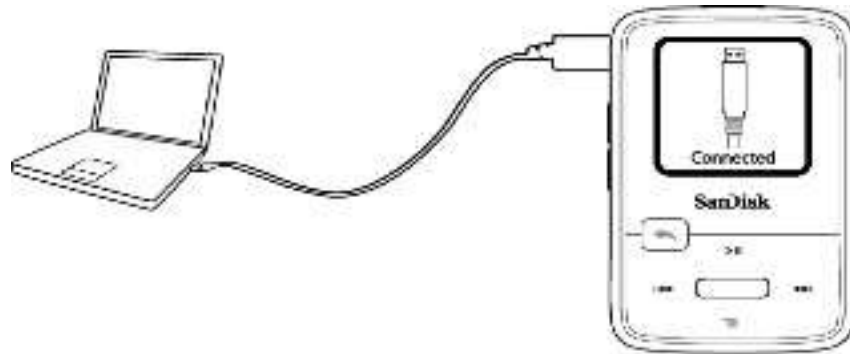
If the Sansa Clip Zip MP3 player freezes up for any reason, press the **Power** button and hold it for approximately 15 seconds. This is similar to a power down of the player. However, be

aware that once you perform the reset, any adjustments you made during the last operation will be lost. Your saved content (e.g. Music Files, Recordings) **will not be deleted** from the device.

Connecting to your Computer: PC Users

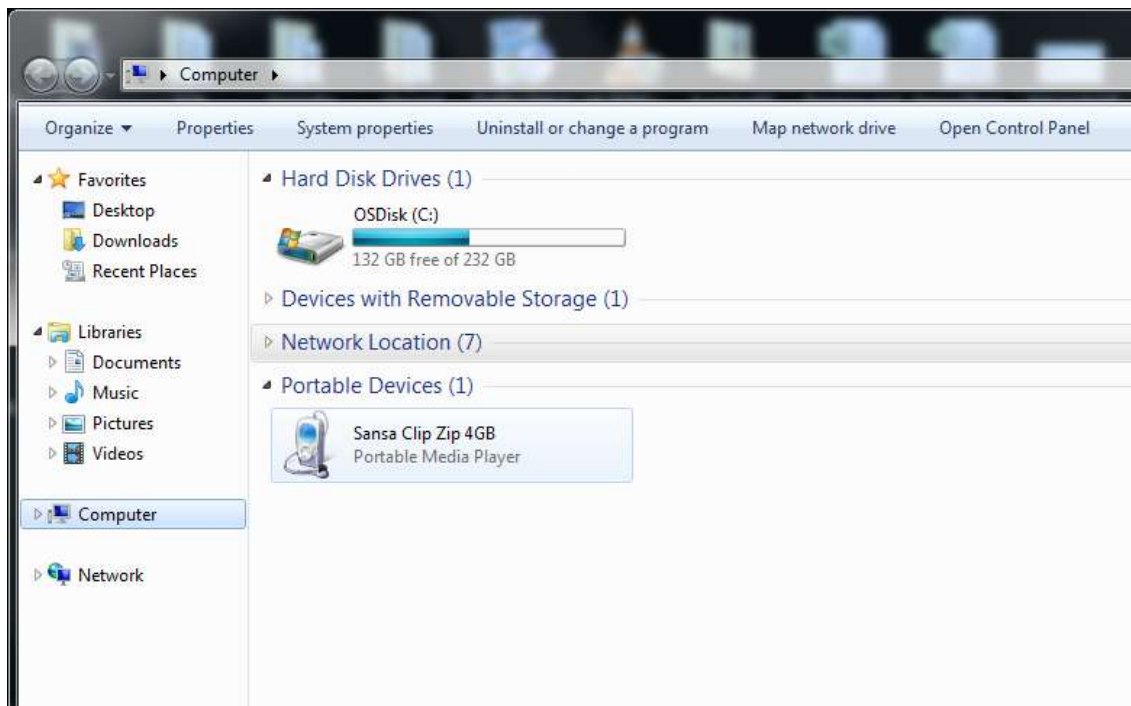
To connect the Sansa player to your PC, follow these instructions:

1. Connect the larger end of the USB cable into an available USB port on the PC.
2. Connect the smaller end of the USB cable into the dock connector of the player.
3. The player will show "Connected" on its display screen. (Pictured below)
4. The player will appear in **My Computer** as Sansa Clip Zip.



Auto Detect or MTP mode

The ability to change between Auto Detect and MTP (Media Transfer Protocol) mode for the Sansa Clip Zip MP3 player is found under device system settings when **USB Mode** is highlighted. Auto Detect and MTP mode are used for Windows Media Player functionality. Be sure that either Auto Detect or MTP mode is selected to connect to a Windows computer. MTP mode on Windows is pictured below.



If your player does not connect:

1. Unplug the player
2. Select Settings
3. Select System Settings
4. Select USB Mode
5. Change the USB Mode from Auto Detect to MSC
6. Plug your player back into your PC

Disconnecting the MP3 player from your computer:

Windows – Simply disconnect the USB cable from the player after you have finished charging, transferring, firmware upgrading, or synchronizing files.



CAUTION: Do not disconnect the player while it's transferring data. Disconnecting the player from the computer while data are being transferred may damage the player.

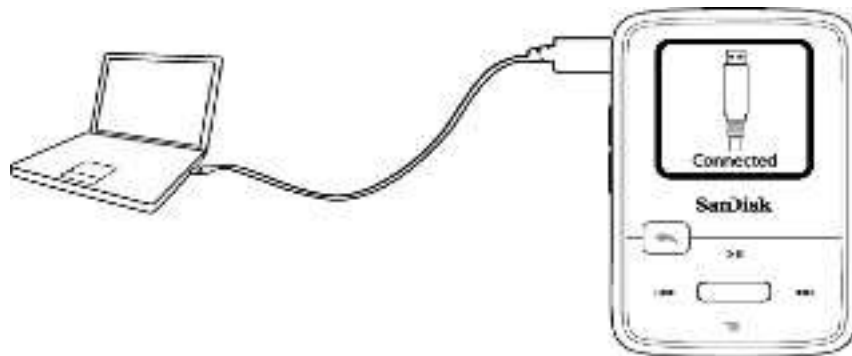
Connecting to your Computer: MAC Users

To connect the Sansa player to your MAC, follow these instructions:

1. Connect the larger end of the USB cable into an available USB port on the MAC.
2. Connect the smaller end of the USB cable into the dock connector of the player.
3. The player will show "Connected" on its display screen. (Pictured below)
4. In Mac OS, the player will appear on your desktop as a removable disk named **SANSA CLIPZ**.

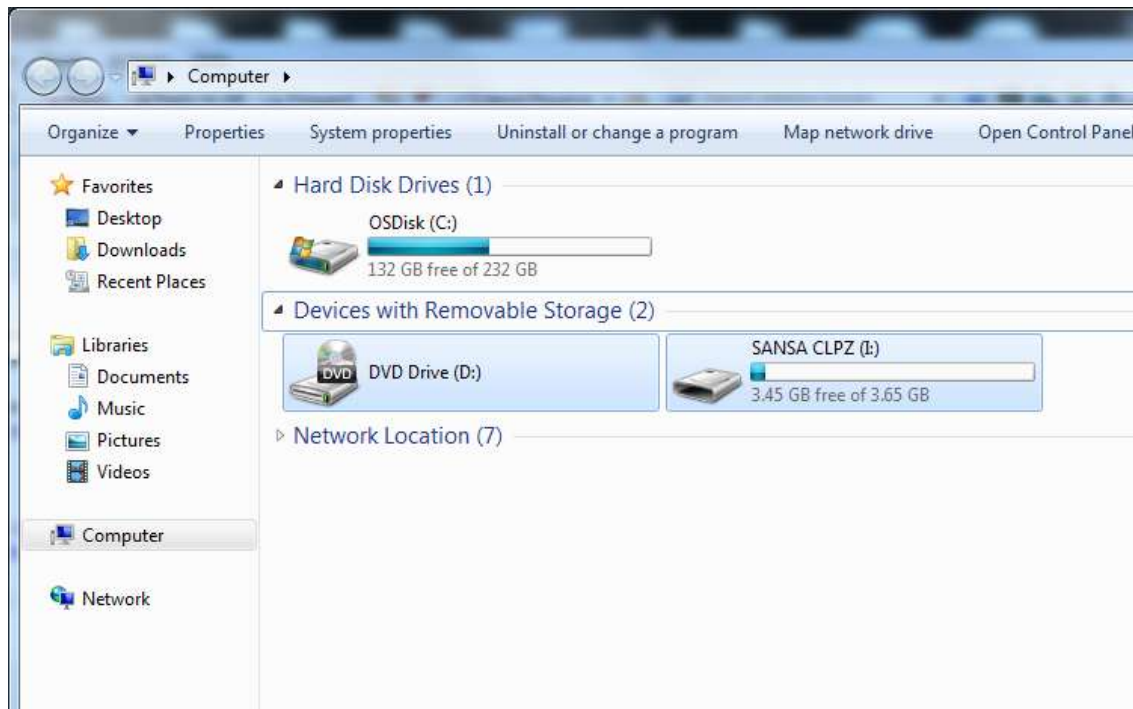


Quick Tips: For Mac OS, the Sansa Clip Zip MP3 player must be set to **Auto Detect** or **MSC** mode in the **USB Mode** settings. See [Chapter 10-Settings](#) for more details.



MSC mode

MSC mode (Mass Storage Class) for the Sansa Clip Zip MP3 player is found under device system settings when **USB Mode** is highlighted. MSC mode enables drag and drop navigation for MAC users. MSC mode on a PC is pictured below.



Disconnecting the MP3 player from your computer:

Mac – Eject the removable disk by dragging the icon to the Trash and then disconnect the USB cable from the computer.



Quick Tips: Updating your player's firmware is highly recommended. For the latest features and performance enhancing firmware visit www.sandisk.com/clipziphelp to download the update. **USA ONLY** the starter CD in Sansa Clip Zip MP3 box has firmware updates, as well.



CAUTION: Do not disconnect the player while it's transferring data. Disconnecting the player from the computer while data are being transferred may damage the player.

Chapter 4

This chapter shows you how to Load music files from your computer to your Sansa® Clip Zip™ MP3 player and Play music content on your device.

Music



Loading Music

You can transfer music from your computer to the Sansa® MP3 player using the drag-and-drop method or using music management software like Windows Media Player.

Drag and Drop (Windows)

Follow these steps to drag-and-drop music to your Sansa Clip Zip MP3 player:

1. Connect your Sansa Clip Zip player to your PC using the provided USB cable.
2. Select **Open device to view files using Windows Explorer** on initial connection or by going to My Computer.
3. Double-click on the **Sansa Clip Zip** MP3 player.
4. Double-click on **Internal Memory**.
5. Double-click on the **Music** folder.
6. Drag and drop music files from your computer to the Sansa MP3 player's **Music** folder.

You can also drag and drop files to a microSD™ card (sold separately), which has been inserted inside your player by going to **My Computer** > **Sansa Clip Zip™** > **External uSD Card**. You can only drag and drop files to the card if you have write permissions for the card.

Drag and Drop (Mac)

Follow these steps to drag-and-drop music to your Sansa Clip Zip MP3 player:

1. Connect your Sansa Clip Zip MP3 player to your Mac computer using the provided USB cable.
2. Double-click on the removable disk named **SANSA CLIPZ** that appears on your desktop.
3. Double-click on the **Music** folder.
4. Drag and drop music files from your computer to the player's **Music** folder.
5. Visit the following link for step-by-step instructions:

http://kb.sandisk.com/app/answers/detail/a_id/1141/kw/1141



Quick Tips: Remember to eject the removable disk before disconnecting your player.

You can also drag and drop files to a microSD™ card inside your player by double-

clicking the second removable disk that appears when you connect your Sansa Clip Zip MP3 player.



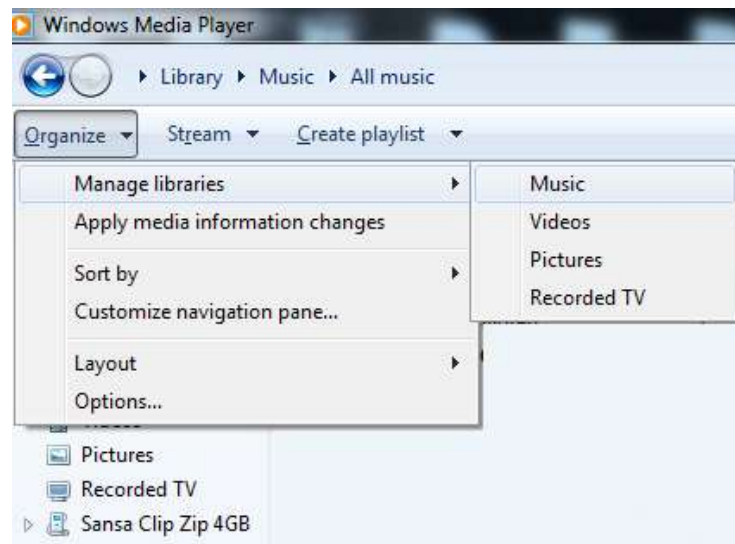
Quick Tips: The second removable disk will display with the card's name, just as if you connected it via a card reader. You can only drag and drop files to the card if you have write permissions for the card.

Windows Media® Player (Windows® Only)-

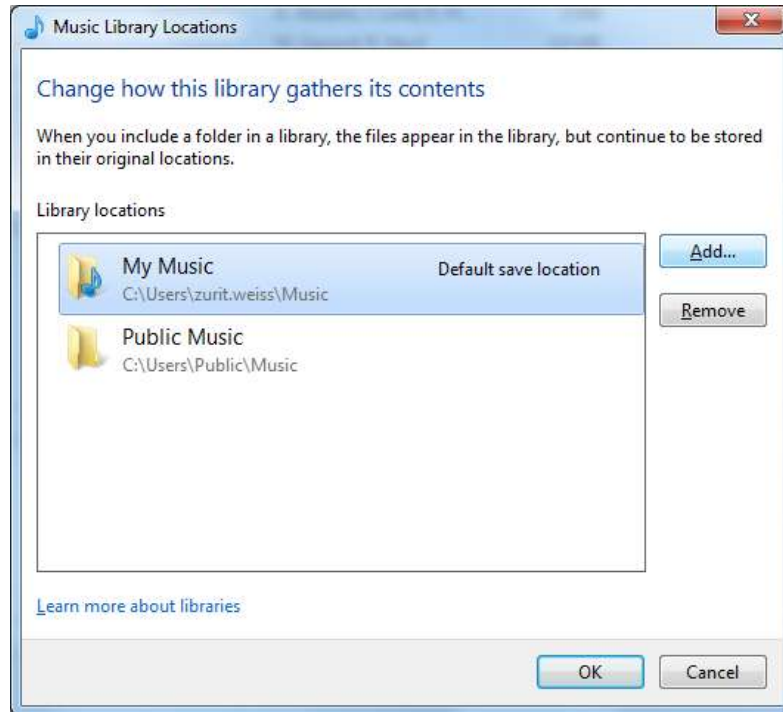
Before you can create playlists and transfer (or synchronize) them to your Sansa® MP3 player, you need to show Windows Media Player where your songs are located.

Adding Music Files to Library

1. To add music files to WMP library, follow these steps:
2. Click the arrow next to the **Organize** tab. Highlight **Manage libraries** and select **Music**.



3. Make sure **My Music** or **Public Music** is selected then click **Add** in order to select content. Once finished, click **OK**.



Note: In the **Add to Library** dialog box, select one of these options

My Music:

Use this option to monitor the digital media files stored in your personal Music folder as well as any files stored in the public Music folders that everyone who uses your computer has access to.

Public Music:

Use this option to monitor the digital media files stored in your personal Music folder, the files stored in the public Music folders, as well as the files stored in the personal Music folders that belong to other users on your computer.

Creating Playlists

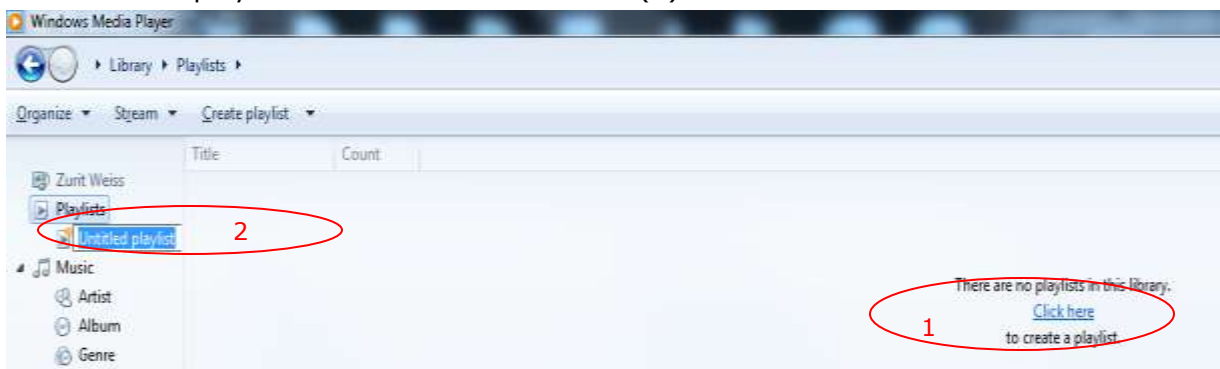
A playlist is a list of songs collected by the user and composed on the computer and synced to the device. A collection of songs can be gathered on the device in the *GoList* (see options menu to create GoList) or *My Top Rated* playlist by rating songs on the device with 4 or 5 stars (see rate song under options menu).

To create playlists for Windows Media Player on the computer, follow these steps:

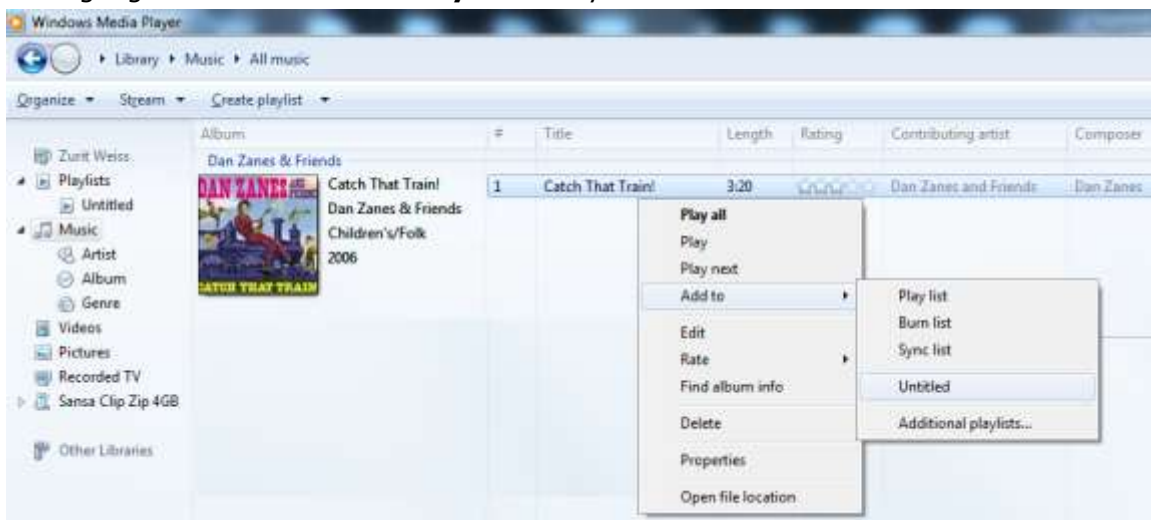
1. Launch Windows Media Player.
2. Click the arrow on the **Library Tab** then select **Create Playlist**.



3. Click here to add playlist (1) and change the name of your **Playlist** that will appear under the playlist tab of the left side menu (2).



4. Click **Music** from your Library then highlight selected song and right click on the content and scroll down to highlight **Add to** and scroll down the "Add to" list to highlight the name of the **Playlist** that you want to direct the content.



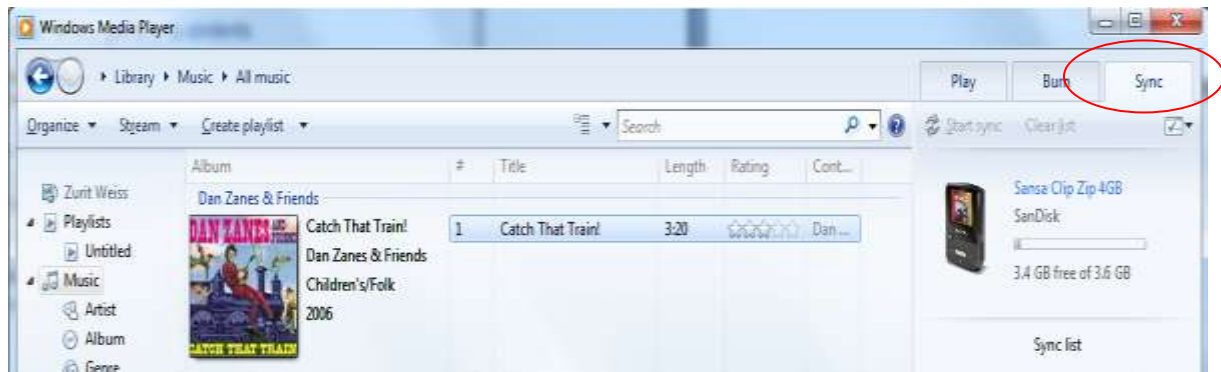
Transferring Playlists

To transfer playlists to your Sansa MP3 player, follow these steps:

1. Connect your Sansa player to the PC.

Music

2. Drag and drop playlist to **Sync Tab** on the right hand side and press "start sync" (circled)



Music Providers Alternatives

1. Rhapsody is an online music service that you can subscribe to in order to download music at www.Rhapsody.com. Rhapsody can only work in America.
2. Emusic is a online music service that offers membership-priced downloading for music for your library www.emusic.com. Emusic can work in America and Canada.

Music providers terms and conditions apply.

AAC Details

In iTunes, DRM protected songs have a *.m4p extension and non-protected songs have a *.m4a extension; alternatively, in iTunes, turn on the "Kind" column in song listings from under the View menu under "View Options" to see which are DRM protected.

When you want to include .m4p songs from iTunes, it is possible by dragging the songs into a folder created on your computer and from there drag and drop into the device **My Music Library**. All iTunes tracks have to be updated to AAC formatted DMR-free files.

Playing Music


Follow these steps to play music:

1. Select **Music** from the Main Menu.
2. Select from the music content groupings: **Shuffle List, Artists, Albums, Songs, Genres, Playlists, or Folders.**
 - a) Selecting **Shuffle List** will play all content saved on the device in random order
 - b) Selecting **Artists** will give the option to shuffle artists or select the artists' name to show songs by the selected artist.
 - c) Selecting **Albums** will give the option of shuffling songs from all albums or scroll to find desired Album and once selected the album songs will be listed.

- d) Selecting **Songs** provides a list to select a song title, which are shown in alphabetical order.
- e) Selecting **My Top Rated** will play songs personally rated with 4 or 5 stars
- f) Selecting **Recently Added** will play the latest upload songs
- g) Selecting **Genres** gives the option to shuffle all songs from all genres or scroll down to select a desired genre and artists will appear in selected genre.
- h) Selecting **Playlists** lists all of the titles of content groups that have been created.
- i) Selecting **Folders** will give the option to shuffle content in folder and allows you to see your folder structure.



Quick Tips: Under artists, songs, playlists, and albums pressing "shuffle list" will shuffle all songs in music library, not just the songs under specific selected category of artists, songs, playlists or albums. In order to shuffle a single album, select one specific album title and press select, then select shuffle list.

- 3. Highlight and select the desired track or file to play from the music content groupings.
- 4. Press the **>>|** button to skip to the next song or press-and-hold to fast forward.
- 5. Press the **|<<<** button once to go back to the beginning of the current song or press **|<<<** button twice to go back to the previous song. Press-and-hold the **|<<<** button to rewind.
- 6. The following options are available during music playback by pressing the **Submenu** button .
- 7. If the display screen does not show current song, then press back return to main menu and press the back button.



Quick Tips: While on playback screen, press the center select button to see full album art.

Options Menu:

When listening to music, the Sansa Clip Zip MP3 player offers seven options for personalizing the experience. These features are found while playing a song after pressing the options/down button or through the main menu settings function under **music options**.



Quick Tips:

- 1. Options screen is only available in playback mode
- 2. Options will be saved if the (*) symbol is next to selected item.

1. Add song to *GoList*

The *GoList* is the on-the-go optional playlist for every user to quickly and easily add and remove songs to fit user preferences. Your media, your way.

- 1. Select **Add Song to GoList**.
- 2. Press the **|<<<** button to return to the playback screen.



Quick Tips: Press and Hold select button during playback to quickly add the currently playing song to GoList.

2. Remove song from *GoList*


This option is only available when the current song is already added to the *GoList*.

1. Select **Remove Song from GoList**.
2. Press the **I<<<** button to return to the playback screen.



Quick Tips: Clearing the music *GoList* does not delete songs from the device. It merely clears the content from the playlist that was saved locally to the device.

3. Rate Song

1. Select **Rate Song**.
2. Press the **I<<<** or **>>>I** button to select a rating.
3. Press **Select**.
4. Press the **back** button  to return to the playback screen.



Quick Tips: Rating a song 4 or 5 stars will add the song to *My Top Rated* playlist under **Music Options**. *My Top Rated* helps keep favorite songs accessible and easy to store together.

4. Repeat

1. Move down to **Repeat**.
2. Press **Select** to toggle and choose a repeat mode:
 - Off: No repeat of tracks
 - Song: Repeat the current track
 - All: Repeat all selected tracks
3. Press the **I<<<** button to return to the playback screen.

5. Shuffle

1. Move down to **Shuffle**.
2. Press the **Select** button to toggle between Shuffle on and Shuffle off (to play songs in random order, set Shuffle to ON).
3. Press the **I<<<** button to return to the playback screen.

6. Delete Song

1. Select **Delete Song** (from your device)
2. Select **Yes** to confirm.



Quick Tips: Deleting songs from the device will not delete the song from your computer.

7. Track Info

1. Select **Track Info**.
2. Press the **Up** or **Down** button to scroll through the track information.
3. Press the **I<<<** button once to return to the previous menu or press **I<<<** button twice to return to the playback screen.

CHAPTER 5

This chapter provides you instructions on how to listen to FM broadcast radio and to program the preset stations on the Sansa[®] Clip Zip[™] MP3 player.

FM Radio



The Sansa Clip Zip MP3 player includes an integrated FM radio for listening to live broadcast FM stations.

Listening to FM Radio

To listen to live broadcast FM stations, follow these steps:

1. From the Main Menu, select **FM Radio**.
2. A radio frequency menu will appear.
3. Press left/previous/rewind button **⏮** or **⏭** right/next/forward button to adjust and search for the desired frequency, or select preset by pressing **Select**.
4. For fast search, press and hold the left/previous/rewind button **⏮** or **⏭** the right/next/forward button.



Quick Tips:

1. Your headphones are the antenna for your device. For best reception or maximizing the number of presets your device can find, extend the headphone cord as much as possible to increase the antenna length and therefore, reception.
2. Pressing play/pause during a radio broadcast is the equivalent of muting the radio. There is no dynamic, live pausing capability on the Sansa Clip Zip MP3 player.




Programming FM Presets

You can program up 40 preset stations. To program the preset stations on your player, follow these steps:

1. Press the **Options** button during Radio playback.
2. Select **Add Preset** to save current frequency into presets, which can be found under **View all Presets**. Or while the earphones are connected, select **Auto Presets** to allow the player to automatically search and store the strongest broadcast signals.
3. Select **Delete Preset** to remove current frequency from presets.
4. Select **View All Presets** to view all stored added presets.
5. Select **Delete All Presets** to erase all stored preset stations.

Recording FM Radio

In order to record broadcast radio to listen and enjoy later on, follow these steps:

1. Press the **Options** button  during Radio playback.
2. Select **Recording**
3. Select **Record Now**
4. Optional: choose **Duration** (from 5 minutes to 2 hours) that you want to record the radio broadcast.
5. During Recording, **Pause/Play** button  once will pause the recording. Pressing **Pause/Play**  one more time will continue the recording.
6. Save by pressing **Select** button and select **Yes** when given the choice.
7. Select **Play Recording** to listen to your saved radio broadcast recordings.
8. Select **Delete Recording** to delete your saved radio broadcast recordings.



Quick Tips:

1. The saved radio broadcast recordings files show the month, day, year and numerical order of the recordings.
2. FM Radio and Voice Recordings are later available on your PC or MAC after connecting the device to your computer and saving the recordings to your library.

Quick Tips: For Home and Personal Use

This product is intended to be used for recording and playback for your home and personal enjoyment. Copying and commercial use of copyrighted material without permission of the copyright owner may be prohibited by law. Use of your media player, in compliance with all copyright and applicable intellectual property laws, remains the responsibility of the user of the product.

Chapter 6

This chapter provides you with the information on how to load and play audiobooks and podcasts in the Books setting of your Sansa® Clip Zip™ MP3 player

Books



Your Sansa Clip Zip MP3 player is able to hold and store audiobooks and podcasts under a dedicated category from the Main Menu. Once you load audiobooks and podcasts, navigate with the following steps to play your favorite content. An audiobook is a recorded book in .mp3 format and a podcast is a recorded broadcast in .mp3 format.

Loading Audiobooks and Podcasts

You can transfer music from your computer to the Sansa MP3 player using the drag-and-drop method (folder view) or using music management software like Windows Media Player.

Drag and Drop

Follow these steps to drag-and-drop music to your Sansa Clip Zip MP3 player:

1. Connect your Sansa Clip Zip player to your PC.
2. Select **Open device to view files using Windows Explorer** on initial connection or by going to My Computer.
3. Double-click on the **Sansa Clip Zip™** MP3 player.
4. Double-click on **Internal Memory**.
5. Double-click on the **Audiobooks** folder.
6. Drag and drop music files from your computer to the Sansa MP3 player's **Audiobooks** folder.

Playing Audiobooks and Podcasts

Under the Main Menu Option **Books**, select to search for audiobooks and podcasts that have been uploaded to the device.

Audiobooks

1. Select between **Audiobooks** and **Podcasts**.
2. With **Audiobooks**, select from **Audiobook List** for desired audiobook.
3. Select between **Chapters**.
4. Playback screen will appear and **Options** button is available.

Audiobook Options

1. **Speed**: Select between normal, fast or slow.

2. **Chapter Skip:** Select between off or on whether you want the book to keep its place when you skip between chapters.
3. **Delete Audiobook:** Select between yes or no. Deleting audiobook from device will not permanently delete the content from your computer.

Audiobook Playback Screen

1. Audiobook name
2. Chapter xx

Podcasts

1. Select **Podcasts**.
2. Podcasts are listed in A-Z order.
3. Once Podcast is selected, then select from Episodes, which are listed in newest to oldest order.

Podcast Options

1. **Speed:** select between normal, slow and fast.
2. **Delete Podcast:** choose between yes and no to delete podcast from your device.

Podcast Playback Screen

1. Podcast name
2. Episode name

Chapter 7

This chapter shows you how to use your Sansa® Clip Zip™ MP3 player's built-in microphone.

Voice



Voice Recording

The Sansa Clip Zip MP3 player has a built-in microphone allowing you to record your own content (voice, an interview, or other speech.)

To start voice recording, follow these steps:

1. From the Main menu, select **Voice**.
2. Select **Record Now**.
3. To pause recording, press the play/pause button **>||**.
4. To resume, press the play/pause button **>||** again.
 - a. Voice Recording Duration lasts from 5 minutes to 2 hours. Your Sansa Clip Zip MP3 Player can record until one of two events occurs; (1) the available memory on the device is exhausted or (2) the battery is drained. However, the device will take a very long recording (e.g. longer than 2 hours) and break it into files of approximately two hours in length.
 - b. A Red dot will appear next to recording time when recording is in progress.
5. To stop recording, press **Select**. A pop-up window will appear on the screen. Select **Yes** to save the recording. The recording will be saved in the **RECORD/VOICE** folder.
6. Press left/previous/rewind button **I<<<** to return to the previous menu.



Quick Tips: For Home and Personal Use

This product is intended to be used for recording and playback for your home and personal enjoyment. Copying and commercial use of copyrighted material without permission of the copyright owner may be prohibited by law. Use of your media player, in compliance with all copyright and applicable intellectual property laws, remains the responsibility of the user of the product.

Playback Recordings

1. From Voice Menu, select **Listen to a Recording**
2. File name: MMDDYY XXX (Month, Date, Year, Recording Number from first to last recording).
3. Select desired recording and play/pause button **>||** functions during playback.
4. Press the right/next/forward button **>>I** to listen to the next recording or press the left/previous/rewind button **I<<<** to go back to previous recording.
5. Holding the right/next/forward button **>>I** down will fast-forward through the current recording that is being played and left/previous/rewind button **I<<<** will rewind through the current recording that is being played.

Chapter 8

Playing music from a preloaded microSDHC™ Card with content for expanded storage

Card



Quick Tips: The microSDHC logo on the actual card (sold separately) will appear upside-down when properly oriented for inserting into the microSDHC card slot.

A **microSDHC card** is extra storage for content that can be loaded from a computer. The card itself becomes a portable content holder. Books and music can be added to the microSDHC card, and then inserted into the Sansa Clip Zip MP3 player. The microSDHC card is sold separately and is not required for using the Sansa Clip Zip MP3 Player. This chapter is designed to show you how to load content onto this separate microSDHC card and play the content once the microSDHC card is inserted into the Sansa Clip Zip MP3 player.

microSDHC™ card with content



1. Insert a microSDHC card loaded with audio content files into the microSDHC card slot. The player will display the message: "Refreshing your media."
2. Select **Card** from the main menu.
3. From Card Menu, Select **Artists, Albums, Songs,** or **Books** to navigate to the content you wish to listen to.
4. Alternately, from the **Music** menu, select **Folders > External uSD Card,** and select either **Play All** or continue navigating through the folders to the file name of the song you want.



You can access your card content either from the card menu, or from any applicable menu. All content on the card will be tagged with a card icon. The icon of the microSDHC card indicates that the source of the content came from the microSDHC card.

Additional Information

- a. Individual songs will display with a card icon to indicate they are stored on the external microSDHC card. Artists and Albums will not display an icon.
- b. The Sansa Clip Zip MP3 player is capable of working with microSDHC™ cards up to 32GB. microSD/microSDHC card slot supports additional higher capacities, up to 40GB* of total device content including internal memory (e.g., 8GB player with a 32GB card).



Quick Tips: For higher capacity of content, the device will take longer to load.

* 1 gigabyte (GB) = 1 billion bytes. Some capacity not available for data storage. The device holds approximately 10,000 songs at its maximum capacity.

Chapter 9

This chapter shows you how to use your Sansa® Clip Zip™ MP3 player's sport mode.

Sport




Timing and Laps

The Sansa Clip Zip MP3 player has a built-in timer function allowing you to record time in hours, minutes, seconds and hundredths of a second. The timer function allows you to record and save Laps.


To start timing, follow these steps:

1. From the main menu, select **Sport**.
2. Select **New Timer** from the timer menu.
3. To **start** timer, press **play/pause** button $\triangleright \parallel$ once. To **stop** timer, press the **play/pause** button $\triangleright \parallel$ once.

 **Quick Tips:** Once time is started and stopped, time can be resumed by either pressing **play/pause** button $\triangleright \parallel$ again, or by pressing the **back** button to show the sport screen where **Resume** will be highlighted to give the option to return to the timer screen. Resume will be an option until a new timer is created.

During the middle of a timing session the following options are available:

1. After starting the timer, press **select** to record a Lap.

 **Quick Tips:** A Lap will save and record time between Laps. Lap 1 will save and record time from the beginning, then Lap 2 will save and record the amount of time that has lapsed between the previous Lap and the current time. Therefore, Laps will add up to the total time if it is utilized during live timing by the user.

2. Once desired laps are recorded, press the **back** button \curvearrowright to see **Current Log** and **Select** to look at the logs that are currently shown on the timer under the Resume category. Also, return to Sport screen to see all recorded logs automatically saved under **Saved Logs**. (This action will reveal the *date* that the logs were recoded, the *start* time of the logs, the *total* time calculated from adding all of the logs together, the *average* time from the logs calculated, and all of the laps that were recorded during that logged amount of time. At any time, press the **back** button \curvearrowright to return to previous screen.) **Please note** that the current log is saved when a new log is created.

 **Quick Tips:** A Log is the set of laps that are recorded and stored in one session consolidated into one Log.

3. Select **Saved Logs** to view all Logs from previous sessions and highlight the Log you wish to view and press **select**. This action will reveal the *date* that the Logs were recoded, the *start* time of the Logs, the *total* time calculated from adding all of the Log together, the *average* time from the Logs calculated, and all of the Lap(s) that were recorded during that logged amount of time. At any time, press the **back** button \curvearrowright to return to previous screen.

4. Under the Sport menu, when Logs are created, the option to **Delete Logs** can be selected and all of the Saved Logs will be listed. To **Delete All Logs**, Select **Delete Logs** once at the top of the display screen. In order to delete a specific Log, scroll down or up with the up and down buttons to highlight the Log that you desire to delete. Once the specific Log is highlighted and the **Select** button is pressed once, the Log will be permanently deleted from Saved Logs.

Chapter 10

This chapter shows you how to customize your Sansa® Clip Zip™ MP3 player's settings

Settings



You can personalize your Sansa Clip Zip MP3 player by selecting **Settings** from the **Main Menu**.

Music Options

From the Settings menu, select **Music Options**.


Repeat

1. Move down to **Repeat**.
2. Press **Select** to toggle and choose a repeat mode:
 - Off: No repeat of tracks
 - Song: Repeat the current track
 - All: Repeat all selected tracks

Shuffle

1. Move down to **Shuffle**.
2. Press **Select** to toggle between **Off** and **On**.



Quick Tips: If music is currently playing, the same menu will appear that can be accessed with the options button  when the playback screen is open. These music options include: Add Song To GoList, Rate Song, Repeat, Shuffle, Delete Song, and Track Info. Please refer to chapter 4 for more details.

Audiobook Options and Podcast Options

From the Settings menu, select **Audiobook Options**.

Ch. Mode (Chapter Mode)

When Chapter Mode is on, it allows you to skip chapters in an audiobook by pressing the **⏪** or **⏩** button without losing your place in the audiobook.

1. Highlight **Ch. Mode**.
2. Press the **Select** button to toggle between **Off** and **On**.

Speed

Audiobook and Podcast speed gives you the control over the pace of the content when it is being played.

1. Highlight **Speed**.
2. Press the **Select** button to toggle between **Normal**, **Fast**, and **Slow** audiobook playback.

Radio Options

From the Settings menu, select **Radio Options**.

Delete All Presets

1. Select **Delete All Presets**.
2. Select **Yes** to confirm.

FM Region

1. Press **Select** on **FM Region** to toggle between **USA** or **World**.



Quick Tips: Selecting FM region **USA** gives tuner settings in tenths and selecting FM region **World** gives tuner settings in hundredths.

FM Mode

1. Press **Select** on **FM Mode** to toggle between **Stereo** or **Mono**.

System Settings

From the Settings menu, select **System Settings**.

Background

1. Press select to toggle between album art on/off the playback screen.

Backlight

After being idle for a predefined time, the player will trigger the backlight timer program automatically to turn off the backlight. You can press any button to re-activate the backlight.

1. Select **Backlight**.
2. Press the **⏪** or **⏩** button to select desired backlight timer (15 seconds to 90 seconds).

Brightness

To adjust the display brightness for better viewing in different lighting environments, follow these steps:

1. Select **Brightness**.
2. Press the **⏪** or **⏩** button to set the contrast level (10% to 100%).
3. Press **Select** and confirm your choice by selecting **Yes** or **No**.

Power Saver

The Power Saver function turns the player off automatically when it has been idle for a defined period of time.

1. Select **Power Saver**.
2. Press the **⏪** or **⏩** button to select desired time (off to 120 minutes) before power off. The player will not enter the power saver mode if it is set to off.
3. Press **Select**

Sleep


The Sleep function turns the player off automatically after a defined period of playback time.

1. Select **Sleep**.
2. Press the **I<<** or **>>I** button to select desired playback time before power off (off to 120 minutes). The player will not enter the sleep mode if it is set to off.
3. Press **Select**

Language

1. Select **Language**.
2. Select a desired language.

Customize

1. Select Customize
2. Remove Home features on main menu if you want by changing them to **Off** by toggling with the **Select** button.
3. Press the **Back** button .

Equalizer

1. Depending on which type of music you listen to frequently, you can choose a genre that enhances the sound of certain music types. Scroll through the options and decide to leave the equalizer on *Normal* or find a custom genre.

Replay Gain

Replay Gain is a method for keeping the perceived volume level constant during playback of content. Typically, music albums are mixed and targeted to differing average levels. During playback in shuffle mode there can be wide differences in the track volume, causing the user to make frequent corrections to the volume level.



Quick Tips: European users be aware of the Europeans limits of volume within the laws and regulations of the European Union.

1. Select **Replay Gain**
2. Highlight **Mode** and tap the select button to choose between *Songs*, *Albums*, or *Off*.
3. Highlight **Pre-Gain** and tap the select button to choose how many decibels(dB) you wish to adjust the overall Playback Volume level upward to compensate for the "average" level of your library's track adjustment.



Quick Tips: For more information, please visit:
http://kb.sandisk.com/app/answers/detail/a_id/430

Language

1. Select **Language**
2. Scroll up and down to find desired language
3. Press **Select** button and language will be changed

Menu Looping

Menu looping gives the option for continuous menu scrolling without stopping at the end and beginning of a menu.

1. Toggle between **on** and **off** for all menus to loop through the bottom and top of the display screen.

Date

1. Select **Date & Time**.
2. Use play/pause/up button to increase month, or the options/down button to decrease month. For the day, press **>>|** once then up button to increase date, or down button to decrease date. To change the month use **<<|** button, or to change the year press **>>|** from the date and use up or down buttons to increase or decrease the year, respectively.



Quick Tips: The date format will be according to your initial device regional settings. For the Americas region, date will show month/day/year. For other regions, date will show day/month/year.

Time

1. Toggle up and down for **24 hr.** or **12 hr** (e.g. 24 hr. shows military time with 13:00 equivalent to 1:00pm. 12 hr. shows AM and PM).
2. Press **>>|** to select the hour and toggle up with the play/pause button to increase hour, then use **>>|** to select minutes and toggle up or down to increase or decrease minutes, respectively.

Volume

1. Select **Volume**.
2. Select **Normal** or **High**, and then press **Select** button.

Reset Factory Settings

1. Select **Reset Factory Settings**.
2. Confirm your choice by selecting **Yes** or **No**.

Info

This displays information regarding your Sansa® Clip Zip™ MP3 player (such as firmware version, available/free memory, number of contents loaded in the player, and the battery status)

USB Mode

USB Mode determines how your player communicates with your computer. Auto Detect is selected by default. You can also choose to always connect in MTP (Media Transfer Protocol) or MSC (Mass Storage Class) modes. Windows can use MTP or MSC mode, but Mac OS will only work with MSC mode. If you set the USB Mode to Auto Detect, make sure you are running Windows Media Player version 10 or higher.

1. Select **USB Mode**.
2. Select **Auto Detect**, **MTP**, or **MSC**.


Format



CAUTION: Ensure that you back up all of the media files you use with your Sansa Clip Zip MP3 player before **FORMATTING** the device as it will cause the files you have stored on the device to be deleted. You will have to re-transfer your content to the device after you have formatted it.

1. Select **Format**.
2. Confirm your choice by selecting **Yes** or **No**.

Restore

1. Select yes or no to restore factory settings with all settings returning to the way in which the device was set when purchased toggle using up and down buttons then select **Yes** or **No**. To leave this option, press the **back** button .

Chapter 11

This chapter helps you get the most from your Sansa® Clip Zip™ MP3 player with tips and troubleshooting.

Tips & Troubleshooting

What music file formats does the Sansa Clip Zip MP3 player support?

The Sansa MP3 Player will support MP3, WAV, WMA, secure WMA, FLAC, Ogg Vorbis, AAC (DRM-Free iTunes) and audiobook formats.

How do I drag music files to my Sansa Clip Zip MP3 player?

As long as the files are WMA, MP3, FLAC, AAC (DRM-Free iTunes) or Ogg Vorbis, they can be dragged into the Music folder. Secure WMA files cannot be dragged and dropped. Use Windows Media® Player 10 or higher to sync protected files.

Which bit rates will the Sansa Clip Zip MP3 player support?

The Sansa Clip Zip MP3 player will support 64-320Kbps for MP3 and 32-192Kbps for WMA. FLAC and Ogg Vorbis are variable bit rate. AAC bit rate range is 16-320Kbps.

Why should I update the firmware?

You should always update the player to the latest firmware to ensure that it functions correctly and has all the latest features. Visit www.sandisk.com/clipzip to download the Sansa Firmware Updater.

Some of my music files are on my player, but cannot be played. When I select them, another song begins to play. What is wrong?

You may not have purchased the rights to play the song on an additional device. To test this, try to play a song that you have copied from an older CD and converted to MP3 format. If you can play that song, but not the song that will not play, then you need to purchase the rights to play the song.

Is the player compatible with podcasts?

As long as the podcasts are in MP3 format and an appropriate bit rate (32-320 kbps), then the player should be capable of playing the files.

Why does my player say unknown artist/album?

Normally this is because the ID3 tags or WMA meta-data information is missing. On your computer, right-click the song, choose Properties, Summary tab then Advanced. Then you can input the data such as Artist, Album, Song Title, Track Number, Genre, and Year.

How do I reset my Sansa Clip Zip MP3 player?

Press-and-hold the **Power** button for approximately 20 seconds, and then release the power button.

Why can't I drag and drop OGG files to my Sansa Clip Zip MP3 player using Windows Media Player?

To drag and drop OGG files to the Sansa Clip Zip MP3 player, you need to upgrade your Windows Media Player to version 11.

Why won't my Sansa Clip Zip MP3 player play music?

Check to verify if the audio file type is supported. If the file type is supported, make sure that the file is not corrupted and that its license is up to date.

Why isn't my Sansa Clip Zip MP3 player being charged or detected by my computer when I connect it?

Verify that you are using Windows Media Player version 10 or higher, reset your player, and try again.

Chapter 12

This chapter provides information to help you get service and support for your Sansa® Clip Zip™ MP3 player.

Learn More, Service, and Warranty Information

Getting Technical Support

Before you contact Technical Support, we encourage you to read the [Tips & Troubleshooting](#) section to see if your question is covered there.

If you have questions about the use or features of your Sansa player as well as other SanDisk products, please visit our Knowledgebase at kb.sandisk.com or www.sandisk.com/support.

THIRD PARTY INTELLECTUAL PROPERTY NOTICE

This product is protected by certain intellectual property rights of Microsoft Corporation. Use or distribution of such technology outside of this product is prohibited without a license from Microsoft or an authorized Microsoft subsidiary. Content providers are using the digital rights management technology for Windows Media contained in this device ("WM-DRM") to protect the integrity of their content ("Secure Content") so that their intellectual property, including copyright, in such content is not misappropriated. This device uses WM-DRM software to play Secure Content ("WM-DRM Software"). If the security of the WM-DRM Software in this device has been compromised, owners of Secure Content ("Secure Content Owners") may request that Microsoft revoke the WM-DRM Software's rights to acquire new licenses to copy, display and/or play Secure Content. Revocation does not alter the WM-DRM Software's ability to play unprotected content. A list of revoked WM-DRM Software is sent to your device whenever you download a license for Secure Content from the Internet or from a PC. Microsoft, may, in conjunction with such license, also download revocation lists onto your device on behalf of Secure Content Owners.

THIS PRODUCT IS LICENSED UNDER THE MPEG-4 VISUAL PATENT PORTFOLIO LICENSE FOR THE PERSONAL AND NON-COMMERCIAL USE OF A CONSUMER FOR (i) ENCODING VIDEO IN COMPLIANCE WITH THE MPEG-4 VISUAL STANDARD ("MPEG-4 VIDEO") AND/OR (ii) DECODING MPEG-4 VIDEO THAT WAS ENCODED BY A CONSUMER ENGAGED IN A PERSONAL AND NON COMMERCIAL ACTIVITY AND/OR WAS OBTAINED FROM A VIDEO PROVIDER LICENSED BY MPEG LA TO PROVIDE MPEG-4 VIDEO. NO LICENSE IS GRANTED

OR SHALL BE IMPLIED FOR ANY OTHER USE. ADDITIONAL INFORMATION INCLUDING THAT RELATING TO PROMOTIONAL, INTERNAL AND COMMERCIAL USES AND LICENSING MAY BE OBTAINED FROM MPEGLA, LLC. SEE [HTTP://WWW.MPEGLA.COM](http://www.mpegla.com).

MPEG Layer-3 audio coding technology licensed from Fraunhofer IIS and Thompson.

SanDisk Manufacturer's Limited Warranty

SanDisk warrants to the end user, that this product, excluding content and or software supplied with or on the product, will be free from material defects in manufacture, will conform to SanDisk's published product specifications and be fit for normal use during the Warranty Period specified in the table commencing on the date of purchase provided that the product is legally placed on the market.

To make a warranty claim please contact SanDisk via support@SanDisk.com within the Warranty Period and provide proof of purchase (showing date and place of purchase and name of the reseller) and product name, type and number. You may return the product after first obtaining a Return Material Authorization number and following any other guidelines listed. For further information see www.sandisk.com and select "support".

SanDisk may at its option repair this product or provide you with an equivalent product; and if unable to repair or replace the product, will refund the purchase price. SanDisk will not be liable for indirect or consequential damage (including loss of data), or for damage caused by improper use (including use in an incompatible device and use not in accordance with the instructions), or by improper installation, unprofessional repair, modification or accident. This constitutes SanDisk's entire liability which will never exceed the price you paid for it, plus the necessary costs you made for the warranty claim. SanDisk products must not be used in applications where failure could threaten injury or life, such as life support systems. SANDISK DISCLAIMS ALL EXPRESS AND IMPLIED WARRANTIES TO THE FULLEST EXTENT PERMITTED BY LAW. IF SANDISK CANNOT DISCLAIM IMPLIED WARRANTIES UNDER APPLICABLE LAW, THEN TO THE EXTENT POSSIBLE, SUCH IMPLIED WARRANTIES ARE LIMITED TO THE DURATION OF THE EXPRESS WARRANTY. THE WARRANTY DURATION ON ANY REPLACED PRODUCT WILL BE THAT PORTION OF THE WARRANTY PERIOD REMAINING ON YOUR ORIGINAL NATIONAL, STATE AND LOCAL LAWS MAY GRANT YOU OTHER RIGHTS THAT ARE NOT AFFECTED BY THIS WARRANTY.

SANDISK MANUFACTURER'S WARRANTY (EUROPE, MIDDLE EAST AFRICA (EMEA))

SANDISK WARRANTS TO THE END USER, THAT THIS PRODUCT, EXCLUDING CONTENT AND OR SOFTWARE SUPPLIED WITH OR ON THE PRODUCT, WILL BE FREE FROM MATERIAL DEFECTS IN MANUFACTURE, WILL CONFORM TO SANDISK'S PUBLISHED PRODUCT SPECIFICATIONS AND BE FIT FOR NORMAL USE DURING THE WARRANTY PERIOD SPECIFIED IN THE TABLE COMMENCING ON THE DATE OF PURCHASE PROVIDED THAT THE PRODUCT IS LEGALLY PLACED ON THE MARKET.

TO MAKE A WARRANTY CLAIM PLEASE CONTACT SANDISK VIA SUPPORT@SANDISK.COM WITHIN THE WARRANTY PERIOD AND PROVIDE PROOF OF PURCHASE (SHOWING DATE AND PLACE OF PURCHASE AND NAME OF THE RESELLER) AND PRODUCT NAME, TYPE AND NUMBER. YOU MAY RETURN THE PRODUCT AFTER FIRST OBTAINING A RETURN MATERIAL

AUTHORIZATION NUMBER AND FOLLOWING ANY OTHER GUIDELINES LISTED. FOR FURTHER INFORMATION SEE WWW.SANDISK.COM AND SELECT "SUPPORT".

SANDISK MAY REPAIR THIS PRODUCT OR PROVIDE YOU WITH AN EQUIVALENT PRODUCT; AND IF UNABLE TO REPAIR OR REPLACE THE PRODUCT, WILL REFUND THE PURCHASE PRICE.

Audio Visual Players	
Sansa® Clip Zip Player	1 U.S.; 2 EMEA
Sansa® Clip+ Player	1 U.S.; 2 EMEA
Sansa® Clip Player	1 U.S.; 2 EMEA
Sansa® View Player	1 U.S.; 2 EMEA
Sansa® Fuze™ Player	1 U.S.; 2 EMEA
Sansa® Fuze+™ Player	1 U.S.; 2 EMEA
slotMusic™ Player	90 (days) U.S.; 2 EMEA
slotRadio™ Player	1 U.S.; Canada
slotRadio™ To Go Player and Card	90 (days) U.S.; 2 EMEA

For Technical Support over the Internet, visit: www.sandisk.com and select "support"

End-User License Agreement

SANDISK CORPORATION

DO NOT DOWNLOAD, INSTALL OR USE THE SOFTWARE UNTIL YOU HAVE CAREFULLY READ THE TERMS OF THIS END USER LICENSE AGREEMENT ("AGREEMENT"). BY DOWNLOADING, USING OR INSTALLING THE SOFTWARE, YOU AGREE TO ALL OF THE TERMS OF THIS AGREEMENT. IF YOU DO NOT AGREE TO ALL OF THE TERMS, DO NOT DOWNLOAD, INSTALL OR USE THE SOFTWARE AND, IF APPLICABLE, PROMPTLY RETURN IT TO YOUR PLACE OF PURCHASE FOR A REFUND. IF THE SOFTWARE WAS INCLUDED WITH YOUR PURCHASE OF HARDWARE, YOU MUST RETURN THE ENTIRE HARDWARE/SOFTWARE PACKAGE IN ORDER TO OBTAIN A REFUND. IF THE SOFTWARE WAS ACCESSED ELECTRONICALLY, CLICK "NOT ACCEPT" TO STOP THE DOWNLOAD PROCESS.

The firmware, computer programs, device drivers, data or information ("Software") is provided to each person who downloads, uses or installs the Software ("you" or "your") under the terms of this Agreement between you and SanDisk Corporation ("SanDisk," "we," or "us"), and may be subject to additional terms and conditions in an agreement between you and SanDisk's third party licensors ("Licensors"). The Software is owned by SanDisk or its Licensors. The Software is protected by copyright laws and international copyright treaties, as well as other intellectual property laws and treaties.

1. Software License: Subject to the terms and conditions contained herein, SanDisk grants to you a limited, non-exclusive, non-sublicensable, transferable in accordance with these terms, royalty-free license under SanDisk's intellectual property rights to use the Software in executable form solely for your personal use only with a SanDisk product and only on a single computer or other hardware device at any given time (the "License"). The Software is "in use" when it is

either downloaded, copied, loaded into RAM or installed into the hard disk or other permanent memory of a computer or other hardware device.

2. Restrictions: SanDisk and its Licensors retain all rights in the Software not expressly granted to you. You may not modify, adapt, translate or create derivative works (new versions) of the Software. No source code is provided under this Agreement. You may not reverse engineer, disassemble, decompile, rent, lease, or encumber the Software, or re-create or discover the source code of the Software. You may not embed or combine the Software within any other software product or device. The Software contains proprietary and confidential information of SanDisk and its Licensors, which you agree not to discover or reveal to others. Any and all permitted copies of the Software that you make or distribute must be unmodified, must contain all of the original Software's proprietary notices, and must include or be accompanied by this Agreement. You may not separate the Software into component parts for sublicense, distribution or transfer to a third party.

3. DISCLAIMER OF WARRANTIES: TO THE MAXIMUM EXTENT PERMITTED BY APPLICABLE LAW, THE SOFTWARE IS PROVIDED "AS IS" AND "AS AVAILABLE" WITH NO WARRANTIES AND NEITHER SANDISK NOR ITS LICENSORS MAKE ANY REPRESENTATION OR WARRANTY, STATUTORY OR OTHERWISE, IN LAW OR FROM THE COURSE OF DEALING OR USAGE OF TRADE, EXPRESS OR IMPLIED, INCLUDING WITHOUT LIMITATION, ANY WARRANTIES OF MERCHANTABILITY, FITNESS FOR A PARTICULAR PURPOSE, NON-INTERFERENCE, OR NON-INFRINGEMENT OF ANY THIRD PARTY INTELLECTUAL PROPERTY RIGHTS, OR EQUIVALENTS UNDER THE LAWS OF ANY JURISDICTION. YOU ASSUME THE ENTIRE RISK AS TO THE QUALITY AND PERFORMANCE OF THE SOFTWARE. SHOULD THE SOFTWARE PROVE DEFECTIVE, YOU, AND NOT SANDISK, ITS LICENSORS OR RESELLERS, ASSUME THE ENTIRE COST OF NECESSARY SERVICING, REPAIR, OR CORRECTION.

4. LIMITATION OF LIABILITY: TO THE EXTENT NOT PROHIBITED BY LAW, IN NO EVENT WILL SANDISK OR ITS LICENSORS, OR THEIR RESPECTIVE DIRECTORS, OFFICERS, EMPLOYEES, CONSULTANTS, LICENSORS, LICENSEES OR AFFILIATES, BE LIABLE FOR ANY INDIRECT, INCIDENTAL, SPECIAL, CONSEQUENTIAL, OR EXEMPLARY DAMAGES, ARISING OUT OF OR IN CONNECTION WITH THE DOWNLOAD, DISTRIBUTION, USE OR PERFORMANCE OR NON-PERFORMANCE OF THE SOFTWARE, EVEN IF SANDISK HAS BEEN ADVISED OF THE POSSIBILITY OF SUCH DAMAGES. THE FOREGOING LIMITATIONS OF LIABILITY SHALL APPLY NOTWITHSTANDING ANY FAILURE OF ANY REMEDY PROVIDED FOR HEREUNDER IN ITS ESSENTIAL PURPOSE. IN NO EVENT WILL SANDISK'S OR ITS LICENSORS' TOTAL LIABILITY TO YOU EXCEED THE AMOUNT YOU PAID TO US FOR THE USE OF THE SOFTWARE.

5. The Software is provided with "RESTRICTED RIGHTS." Use, duplication or disclosure by the Government is subject to restrictions as set forth in FAR 52.227-14 and DFARS 252.227-7013 et seq. Use of the Software by the Government constitutes acknowledgement of SanDisk's proprietary rights therein. Contractor or Manufacturer is SanDisk Corporation, 601 McCarthy Blvd., Milpitas, CA 95035.

6. Transfer: If you sell or otherwise transfer the SanDisk product that incorporates the Software as a whole, you may transfer the Software as

fully integrated into such product provided that you also supply this Agreement to the purchaser or recipient of the product, at which time all of your rights under this Agreement will immediately cease. Except as stated above, you may not assign or transfer this Agreement in part or in whole, and any attempt to do so shall be void.

7. Termination: We may terminate this Agreement and the license immediately and without notice if you breach it. Upon termination of this Agreement, you must delete or destroy all copies of the Software.

8. High Risk Activities. The Software is not fault-tolerant and is not designed or intended for use in hazardous environments requiring fail-safe performance, or any other application in which the failure of the Software could lead directly to death, personal injury, or severe physical or property damage (collectively, "High Risk Activities"). SANDISK AND ITS LICENSORS DISCLAIM ANY EXPRESS OR IMPLIED WARRANTY OF FITNESS FOR HIGH RISK ACTIVITIES AND SHALL NOT BE LIABLE FOR ANY LIABILITIES OR DAMAGES ARISING FROM SUCH USE.

9. General: This Agreement contains the entire understanding between the parties with respect to your use of the Software. If any part of this Agreement is found void and unenforceable, it will not affect the validity of the balance of this Agreement, which shall remain valid and enforceable according to its terms. This Agreement is governed by and construed under the laws of the State of California and controlling U.S. federal law without regard to conflicts of laws provisions thereof. The U.N. Convention on Contracts for the International Sale of Goods shall not apply to this Agreement. Any action or proceeding arising from or relating to this Agreement shall be adjudicated in the state or federal courts of Santa Clara County, California, and the parties hereby agree to the exclusive jurisdiction and venue of such courts. You will not remove or export from the United States or re-export from anywhere any part of the Software or any direct product thereof to any country in violation of U.S. Export Administration Regulations, or a successor thereto, except in compliance with and with all licenses and approvals required under applicable export laws and regulations including, without limitation, those of the U.S. Department of Commerce. Any waivers or amendments of this Agreement shall be effective only if made in writing and signed by an authorized representative of each party. You agree that the Licensors are third party beneficiaries of this Agreement to enforce your performance of the terms and conditions of this Agreement. The provisions of Sections 2, 3, 4, 5, 6, 7, 8 and 9 shall survive the termination or expiration of this Agreement.

FCC REGULATION

This device complies with part 15 of the FCC Rules. Operation is subject to the following two conditions:

1. This device may not cause harmful interference, and
2. This device must accept any interference received, including interference that may cause undesired operation.

This equipment has been tested and found to comply with the limits for a Class B digital device, pursuant to Part 15 of the FCC Rules. These limits are designed to provide reasonable protection against harmful interference in a residential installation. This equipment generates, uses, and can radiate radio frequency energy and, if not installed and used in accordance with the

instructions, may cause harmful interference to radio communications. However, there is no guarantee that interference will not occur in a particular installation. If this equipment does cause interference to radio or television reception, which can be determined by turning the equipment off and then on, the user is encouraged to try to correct the interference by one or more of the following measures:

3. Increase the separation between the equipment and receiver.
4. Correct the equipment to a different outlet so that the equipment and receiver are on different branch circuits.
5. Consult the dealer or an experienced radio / TV technician for help.