



SIX YEAR WARRANTY



AN-Mini

A Message from the President

Congratulations on purchasing an Anchor Audio sound system, the choice of thousands of satisfied customers including the White House, prestigious universities, school districts nationwide, police and fire departments, and all branches of the U.S. military. Our products are made of the finest materials and built with pride in the U.S.

We've incorporated the latest technology into your sound system yet kept it simple to use. Just take a few minutes to review this manual to ensure the maximum enjoyment of your Anchor system. Or, you can view a demonstration video complete with a trouble shooting section at www.anchoraudio.com.

Feel free to call our friendly customer support staff at 1-800-ANCHOR1 Monday thru Friday between 7:00am and 5:00pm Pacific Standard Time with any questions. We love to hear from our customers.

Janet Jacobs, President
on behalf of all Anchor employees

MiniVox Lite

(contains AN-Mini speaker monitor, wired microphone, and SOFT-30 soft case)



CONTENTS

GETTING STARTED / RETURNING SYSTEMS FOR SERVICE/WARRANTY REGISTRATION.....	1
BASIC SYSTEM OPERATION	2
BUILT-IN UHF WIRELESS RECEIVER / USING AN OUTBOARD MP3/CD/TAPEPLAYER	3
OPERATING THE WIRELESS MICROPHONE / TRANSMITTER	4
BATTERY INSTALLATION	5
HAVING TROUBLE WITH YOUR SOUND SYSTEM?	6
AN-MINI TECHNICAL SPECIFICATIONS	6

GETTING STARTED

Please check your new unit carefully for any damage which may have occurred during shipment. Each Anchor product is carefully inspected at the factory and packed in specially designed boxes for safe transport.

Notify the freight carrier immediately of any damage to the shipping box or product. Repack the unit in the original box and wait for inspection by the carrier's claim agent. Notify your dealer of the pending freight claim.

NOTE: All damage claims must be made with freight carrier!

RETURNING SYSTEMS FOR SERVICE OR REPAIR

For service or repair, please contact the dealer you purchased your system from or Anchor Audio Customer Service at 800.262.4671 to obtain a RA (*Return Authorization*) number. You may also complete an online RA request form at www.anchoraudio.com. All shipments to Anchor Audio must include a RA number and must be shipped prepaid. C.O.D. shipments will be refused and returned at your expense.

IMPORTANT: Save the shipping box & packing materials, they were specially designed to ship your unit!

WARRANTY REGISTRATION

Visit our website at www.anchoraudio.com and select "Warranty Registration." Complete the online form to activate the six-year limited warranty on your AN-Mini speaker monitor and two-year limited warranty for the microphones.



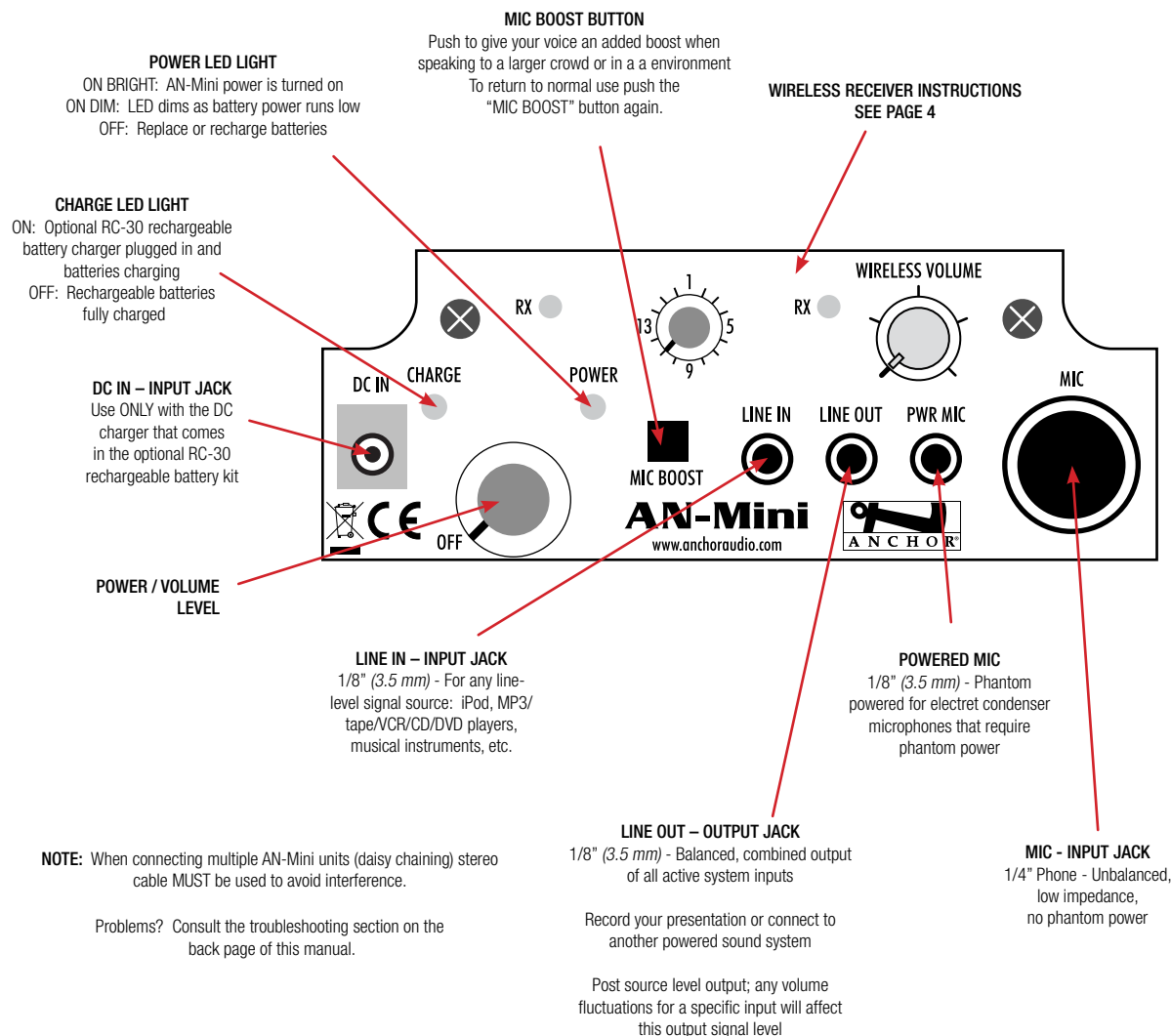
BASIC SYSTEM OPERATION

NOTE: Fully Charge Batteries Before First Use!

1. Position the AN-Mini with the front/speaker facing toward your audience
2. Connect a microphone to the one of the MIC jacks (1/4" MIC jack or 3.5 mm PWR MIC mini jack)
3. Turn the AN-Mini Power/Volume Level knob on, the red POWER LED will light and remain lit during operation
4. Set the microphone power switch to ON
5. Adjust the volume with the Power/Volume Level knob

IMPORTANT: Make all connections with shielded cables to avoid hum, buzzing or interference.

BACK PANEL OF AN-MINIU1



NOTE: When connecting multiple AN-Mini units (daisy chaining) stereo cable MUST be used to avoid interference.

Problems? Consult the troubleshooting section on the back page of this manual.



SIX YEAR WARRANTY

DIVERSITY WIRELESS BY ANCHOR AUDIO

Anchor Audio UHF wireless is a 16 channel, diversity wireless system that receives signals with two independent antennae. With diversity wireless the receiver processes the stronger signal, effectively minimizing dropouts and interference from other transmitting sources. The antennae are mounted internally so there are no obstructions or risk of damage.

CHANNEL SELECTION - BUILT-IN RECEIVER

Before you can use your UHF wireless system, you will need to select a wireless frequency, set the built-in receiver, and microphone transmitter, to that channel.

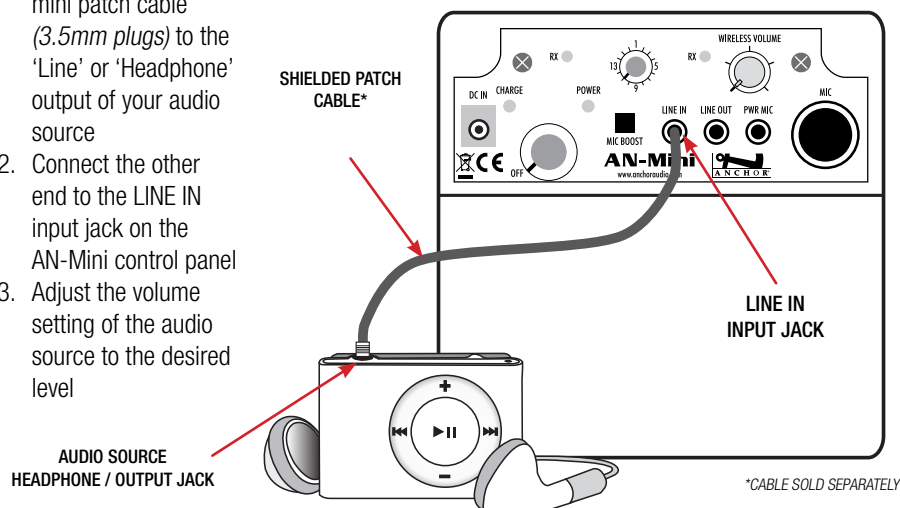
1. Choose from any of the 16 available wireless channels
2. Set the wireless channel selector knob "CHANNEL" to the channel/frequency you have chosen

NOTE: Ongoing wireless interference? The frequency you selected may be in use by other systems in the area! Change channels until you find a clear frequency!

USING AN OUTBOARD MP3/CD/TAPE PLAYER

Use the LINE IN input jack to play pre-recorded material through the AN-Mini. The AN-Mini volume knob controls both the audio source and microphone levels when used simultaneously.

1. Connect a mini-to-mini patch cable (3.5mm plugs) to the 'Line' or 'Headphone' output of your audio source
2. Connect the other end to the LINE IN input jack on the AN-Mini control panel
3. Adjust the volume setting of the audio source to the desired level



AN-MINI WIRELESS CONTROLS



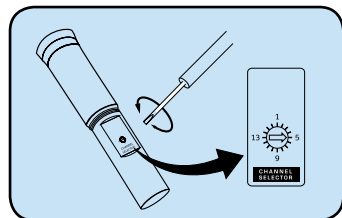


SIX YEAR WARRANTY

OPERATING THE WIRELESS MICROPHONE/TRANSMITTER

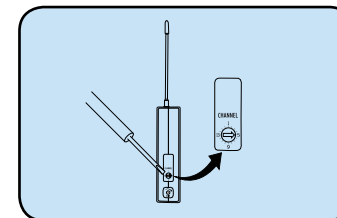
CHANNEL SELECTION - HANDHELD TRANSMITTER

1. Unscrew battery cover on bottom of microphone
2. Set the CHANNEL SELECTOR dial to match the channel setting of your receiver
3. Replace battery cover and tighten firmly



CHANNEL SELECTION - BODY-PACK TRANSMITTER

1. The channel selection dial is located on the side of the transmitter
2. Set the CHANNEL selection dial to match the channel setting of the receiver



USING YOUR WIRELESS MICROPHONES

After you have set the transmitter channel (see above) you are ready to use your wireless microphone:

1. Body-pack transmitter users must insert the mic plug into the transmitter jack marked MIC
2. Turn the transmitter power switch to ON *(The red LED will flash when the mic is turned on. If the red LED stays on, the battery is low)*
3. Turn the AN-Mini power switch to ON
4. The RX indicators will light *(only one indicator will light at a time)* when the wireless signal is being transmitted and received

NOTE: When using dual wireless, each microphone must be set to a different channel!

CAUTION: Harmful feedback may occur when walking in front of a sound system or speaker with a wireless microphone. Always point microphone away from speakers!

Waste electrical and electronic products must not be disposed of with household waste. Please recycle where facilities exist. Check with your Local Authority or Retailer for recycling advice.





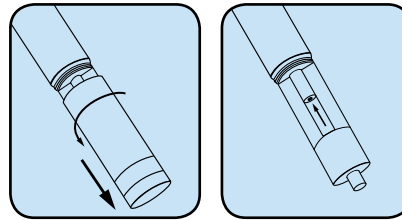
SIX YEAR WARRANTY

BATTERY INSTALLATION

1. Remove the battery compartment cover located underneath the control back panel of the AN-Mini by pressing down the lock tabs of the battery compartment cover
2. Slide out the battery pack from the AN-Mini battery compartment
3. Insert ten 'AA' size batteries (*alkaline or RC-30 rechargeable batteries*) into the battery pack Position the ten battery tubes into the battery pack by following the polarity labels on the battery pack
4. Slide-in the battery pack into the battery compartment Push the battery pack all the way in
5. Replace the battery compartment cover and push cover to lock tabs in place

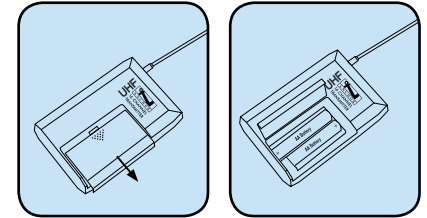
REPLACE BATTERY - HANDHELD TRANSMITTER

1. Unscrew battery cover on bottom of microphone
2. Replace old batteries with two fresh size 'AA' alkaline batteries
3. Replace battery cover and tighten firmly



REPLACE BATTERY - BODY-PACK TRANSMITTER

1. Slide open battery cover on front of transmitter
2. Replace old batteries with two fresh size 'AA' alkaline batteries
3. Replace battery cover by sliding firmly into place



RECHARGEABLE BATTERY KIT (OPTIONAL ACCESSORY)

For applications where the AN-Mini PA system is used frequently, the RC-30 rechargeable battery kit is available. This kit includes 10 rechargeable NiMH batteries and an AC charging adapter. When fully charged the batteries provide approximately 12 hours of operation.

NOTE: New batteries must be charged for 6 hours prior to first use.

Using the RC-30 Recharge Kit

1. Install the 10 rechargeable NiMH batteries into the AN-Mini (see above - Battery Installation)
2. Insert the charger into the Input Jack labeled DC IN on the AN-Mini control panel
3. Plug the AC adapter into a power outlet for 4-6 hours to fully charge

Cycling the Batteries

For extended battery life, we recommend you fully charge the batteries once each month during periods of infrequent use. Always fully recharge batteries before storing.

CAUTION: NEVER recharge other types of batteries. Doing so can result in battery explosion. Use only rechargeable Nickel-Metal Hydride (NiMH) batteries.

NOTE: System Can Be Used During Charging!



RC-30 Rechargeable Battery Kit



SIX YEAR WARRANTY

HAVING TROUBLE WITH YOUR SOUND SYSTEM?

CONDITION	POSSIBLE CAUSE
No Sound (<i>LED off</i>)	<ul style="list-style-type: none"> • turn POWER switch ON • charge batteries
No Sound (<i>LED on</i>)	<ul style="list-style-type: none"> • turn microphone switch ON • make sure all cables are completely plugged in
No Sound When Using CD Input	<ul style="list-style-type: none"> • check for output from source • make sure all cables are completely plugged in
Distorted Sound	<ul style="list-style-type: none"> • lower system volume control • replace or recharge batteries
Shortened Battery Life	<ul style="list-style-type: none"> • replace worn NiMH batteries • 'Cycle' NiMH batteries (<i>see page 5</i>)
Unit Turns Off & Back On During Use	<ul style="list-style-type: none"> • batteries are low and need to be replaced

HAVING TROUBLE WITH YOUR WIRELESS SYSTEM? (*Wireless Model Only*)

No Sound (<i>RX Indicator: ON</i>)	<ul style="list-style-type: none"> • microphone volume control is to low or off • no mic plugged into belt-pack transmitter
No Sound (<i>RX Indicator: OFF</i>)	<ul style="list-style-type: none"> • sound system not turned on • transmitter power switch turned off • low battery or no battery in transmitter • transmitter and receiver are not on the same channel

NEED MORE HELP? AN-Mini Setup & Operation Videos!
Visit Our Website: www.anchoraudio.com

AN-MINI TECHNICAL SPECIFICATIONS

Rated Power Output	30 watts	<i>RC-30 – Recharge Kit (optional)</i>	
Max SPL @ Rated Power	109 dB @ 1 meter	Battery Type	10 'AA' size, NiMH 2.5 AH
Frequency Response	100 Hz – 15 KHz +/- 3dB	Charger	AC-30
Speaker Type	4.5 inch neodymium woofer	AC-30 Input	120 VAC, 60Hz, 24 watts max
Battery Type	10 'AA' alkaline	AC-30/220 Input	220 VAC, 50Hz, 10 watts max
Dimensions (<i>HWD</i>)	5.5" x 5.5" x 6.5" (13.9 x 13.9 x 16.5 cm)	Shipping Weight	2.1 lbs / 1.0 Kg
Weight	2.5 lbs / 1.13 Kg		
Line Out	line level, 3.5 mm		
<i>Inputs</i>			
Line	line level, 3.5 mm		
Powered Microphone	Lo-Z phantom power, 3.5 mm jack		
Microphone	Lo-Z, 1/4" phone		



(Specifications Subject to Change Without Notice)



Scan for
AN-MINI/MINIVOX LITE
Technical Specs



Scan for
AN-MINI/MINIVOX LITE
Brochure



Scan for
AN-MINI/MINIVOX LITE
Website



Scan for How to
Videos & Articles

ANCHOR AUDIO CUSTOMER SERVICE
800.262.4671

FOR ADDITIONAL INFORMATION
visit www.anchoraudio.com