

digital revolutionized photography
we revolutionized digital

Canon KNOW HOW®

1-800-OK-CANON
www.usa.canon.com

Canon U.S.A., Inc.
One Canon Plaza, Lake Success, NY 11042 U.S.A.

Canon Canada Inc.
6390 Dixie Road, Mississauga, Ontario L5T 1P7 Canada

Canon Mexicana, S. DE R.L. DE C.V.
Periférico Sur No. 4124, 5º y 6º pisos, Col. Ex-Rancho de Anzaldo,
01900 México, D.F.

Canon Latin America
703 Waterford Way, Suite 400, Miami, FL 33126 U.S.A.

0039W118

©2003 CANON U.S.A., INC.
PRINTED IN U.S.A.

www.canoneos.com

Canon

EOS
DIGITAL
REBEL



PHOTOGRAPHY WITHOUT LIMITS



In 1990, Canon's first EOS Rebel revolutionized photography by making SLR excitement available to everyone. In the decade that followed, the Rebel grew and evolved to give its legions of fans even more photographic freedom.

Now the Rebel achieves its ultimate evolution. Equipped with Canon's exclusive "Digital Trinity" – 6.3 Megapixel CMOS Sensor, **DiGIC** Imaging Processor and compatibility with over 50 of

Canon's superb EF lenses – the Digital Rebel breaks definitively through every remaining barrier to truly deliver photography without limits. Create memorable images no matter what your level of experience. Nurture your creativity with easy controls and a world of EOS accessories. Share and reproduce your images with state-of-the-art digital freedom. The world's first affordable, premium-quality digital SLR makes it all possible.



Canon Digital Trinity – EF Lenses, 6.3 Megapixel CMOS Sensor, **DiGIC** Imaging Processor



THE REBEL HAS GONE DIGITAL

Rest assured with a 7-point Wide-Area AF, your shots will be in focus to capture those memorable moments.

© 2003 Joe Di Maggio All Rights Reserved.

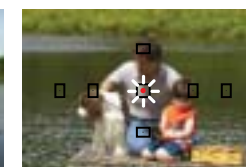


CAPTURE ANY SHOT THE WAY YOU SEE IT – BRILLIANTLY.

The **7-point Wide-Area AF System** makes focus quick and accurate, even when your subject is off center. **7 focusing points** are laid out in a cross pattern that's visible on the clear, uncluttered Viewfinder. You can let the camera detect your subject and choose the proper focusing point; the chosen point will be illuminated for no-surprise focus. The Digital Rebel supports your own creative vision as well by letting you choose your own focusing point. **Dioptric Adjustment** lets you shoot comfortably with or without your glasses.



7-point Wide-Area AF System



FOCUS IN



7-point Wide-Area AF

1/200 sec. • f/2.8

DAZZLING RESOLUTION: THE 6.3 MEGAPIXEL CMOS SENSOR

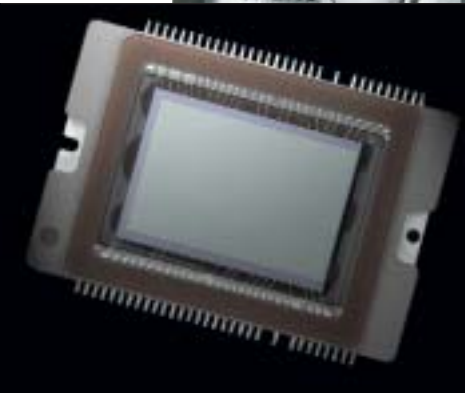
The camera's **large-format, high-resolution 6.3 Megapixel CMOS Sensor** delivers images that will astonish you with their depth and detail. Every image is remarkably detailed throughout the full dynamic range, from highlights to shadows. The large sensor has a 3:2 aspect ratio to give you the familiar compositional feel and classic image proportions of a 35mm camera.

Canon's more than 60 years of photographic experience went into the CMOS Sensor's invention and refinements, and the way it works in perfect tandem with the **DiGiC Imaging Processor**. Together, they virtually eliminate stray light and off colors. Even long exposure images, like city lights against a night sky, are clear and virtually noise-free.

The sensor supports an extensive range of ISO speeds. This allows you to quickly compensate for shifting light conditions, as if you had films of various speeds actually built into the camera. In short, the CMOS Sensor allows the Digital Rebel to achieve images with the quality of film, while offering all the advantages of digital technology.

RAW AND JPEG

In **RAW** mode, every shot is captured as both a RAW and **Middle/Fine JPEG** file. RAW files render the most detailed printed images, while less-detailed JPEGs are smaller, making them perfect for sending and viewing on computer screens. Having both kinds of files recorded automatically means that whatever you decide to do with your final images, you're covered.





Choose from over 50 EF Lenses to get up-close to the action.

High-speed Autofocus



With continuous 2.5 frame-per-second advance, you'll be able to capture split second action sequences.

2.5 fps

THE SPEED TO CAPTURE THE SHOTS THAT WON'T WAIT.

Highly responsive autofocus makes for shooting excitement. The camera automatically employs one of 3 AF systems to deliver fast, spot-on focus in any situation. **One-Shot AF** is the best choice for still subjects, locking in focus as you press the shutter button halfway. **AI Servo AF** tracks active subjects, predicting their movement. **AI Focus AF** switches between One-Shot AF and AI Servo AF when subjects start and stop, perfect for children, pets, and other unpredictable subjects. High-speed **2.5 frames-per-second** motor-drive powers the **Continuous Shooting** mode, letting you capture split-second action sequences with a burst of up to 4 shots.



FAST LANE



THE DIGIC IMAGING PROCESSOR

Canon's exclusive **DIGIC** chip gives the Digital Rebel spectacular image quality, natural color reproduction, and fast, responsive handling. The general-purpose imaging processors used by most digital cameras perform pixel operations one at a time. **DIGIC**, however, operates in parallel mode for exceptionally fast processing. Fast

processing combines with high-capacity buffering to eliminate waiting time between shots, so when the great shots are ready, you are too. Newly developed anti-noise/high-resolution algorithms make stray light and off-color pixels minimal to non-existent. Feel free to enlarge and crop with exceptional results.

ISO FLEXIBILITY

Digital Rebel's digital component performance is impressive, offering you many advantages. **ISO speed** can be set from **100 to 1600** so when lighting conditions change, the camera can change with them. A conventional SLR would have to hold multiple rolls of film at various speeds to match this flexibility!

Get up close with a macro lens and EOS System Accessories.



1/180 sec. • f/16

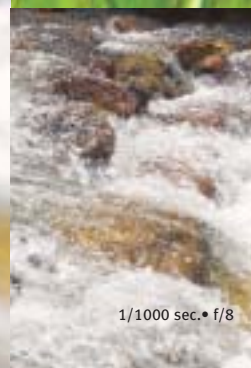
© 2003 George D. Lepp All Rights Reserved.



1/250 sec. • f/5.6



Create soft effects with a slow shutter speed or freeze the moment with a fast shutter speed.



1/2 sec. • f/32

1/1000 sec. • f/8

PhotoStitch



1/125 sec. • f/11

WORKS SMART ON ITS OWN; HANDS OVER CONTROL WHEN YOU WANT IT.

The Digital Rebel's **35-zone, AF point-linked Evaluative Metering Sensor** and 3 metering modes make the art of controlling exposure as easy or advanced as you want. **35-zone Evaluative Metering** ensures accurate, consistent exposure, taking into account lighting extremes and subject position through the active focusing point. Whether the light is bright and sunny or darkly atmospheric, whether it comes from the front or the back, exposure is detailed, natural and flattering.



35-zone Evaluative Metering

Partial Metering

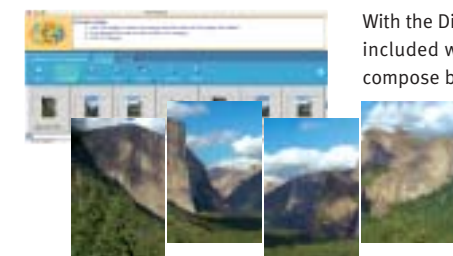
Center-weighted Average Metering



Control is there when you want it, with **Partial Metering** to bring extra sensitivity to high-contrast situations, or **Center-weighted Average Metering** in manual exposure mode. Creative exposure options go even further with illumination from the built-in flash or an optional **EX-series Speedlite**: you can use Canon's most advanced flash metering system, **E-TTL**, plus **FE Lock**, **High-speed Sync** and **Wireless E-TTL Autoflash**.

INTELLIGENT

PANORAMA PHOTOGRAPHY



With the Digital Rebel's **PhotoStitch** software included with the camera anyone can compose breathtaking panoramas easily. Sequential images can be combined end-to-end or two over two with seamless, distortion-free results.

PERFECT WHITE BALANCE FOR CLEAR, TRUE COLOR



White balance is automatically managed by the camera to make every image look as though it were lit with pure white light. Numerous preset and custom options are also offered, giving you fast white balance control that's like installing a different type of film for every lighting condition.

WB Auto:	Ideal color temperature is set automatically.
Daylight:	For sunny outdoor shots.
Shade:	Counters strong blue tones in open shade on sunny days.
Overcast:	For cloudy days, dusk and dawn.
Tungsten Bulb:	For incandescent illumination.
Fluorescent Light:	Eliminates typical green color casts.
Flash:	A starting point for studio strobes and Canon Speedlites.
Custom:	Lets you shoot a white object to determine the proper setting, then lock it in on the LCD screen.
WB Bracketing:	Capture 3 images (normal, reddish and bluish) with one shot, up to ±3 steps.



Easy and fun

Versatile and easy to use, the Digital Rebel will be ready whenever the moment strikes you.

© 2003 Rick Sammon All Rights Reserved.

1/90 sec. • f/5.6



1/30 sec. • f/11



1/30 sec. • f/8

With a built-in flash, night-time photos are a cinch.



3 sec. • f/11



Cross Keys

A FUN COMPANION, AT YOUR SIDE WHEREVER THE DAY TAKES YOU.

The Digital Rebel is compact and lightweight, with a secure rounded grip. In fact, it feels so good in your hand you'll want to bring it everywhere. Operation feels familiar and intuitive, whether you're new to digital, new to SLR cameras or even new to photography.

SIMPLE

The **Mode Dial** makes one-handed shooting comfortable, with digital and shooting controls easily accessed and **Cross Keys** located right under your thumb handle the operations you'll use most. The **LCD screen** is big and informative, and you can even adjust the brightness setting. Menus are written in plain language and tabbed on a single screen – no scrolling necessary. The highly intelligent **Built-in Flash** pops up and fires automatically in appropriate modes for point-and-shoot convenience.



IMAGE ROTATION

In the playback mode, images are **automatically rotated** to an upright position for more convenient viewing on the LCD screen or on your computer.

PROCESSING PARAMETER SETTINGS

Two preset **Processing Parameter** options cover all the bases in preparing images for printing. One setting automatically produces crisp, vivid images for direct printing without editing. A second setting gives you more creative latitude in image editing. You can also create and store up to 3 sets of custom parameters.



MODE DIAL: 12 VERSATILE SHOOTING MODES



Full Auto
Shoot carefree: focus, exposure and white balance are intelligently controlled for you.



Portrait
Your subject is sharply focused and the background beautifully blurred.



Landscape
Scenery comes alive with sweeping depth of field and backgrounds in sharp focus.



Close-Up
Capture every dazzling detail with incredible definition.



Sports
Freeze fast action for high-impact images.



Night Portrait
Makes a challenging situation easy, properly illuminating both subject and background.



Flash Off
Disables both the built-in flash and an attached Speedlite.



Program AE
Experiment with shutter and aperture while maintaining a constant exposure value.



TV Shutter Priority AE
Set your own shutter speed and the camera will choose an appropriate aperture.



Av Aperture Priority AE
Choose an aperture for dramatic effects while the camera sets the shutter speed.



A-DEP Automatic Depth of Field AE
Creates a custom "zone of sharpness" between the nearest and farthest subjects.



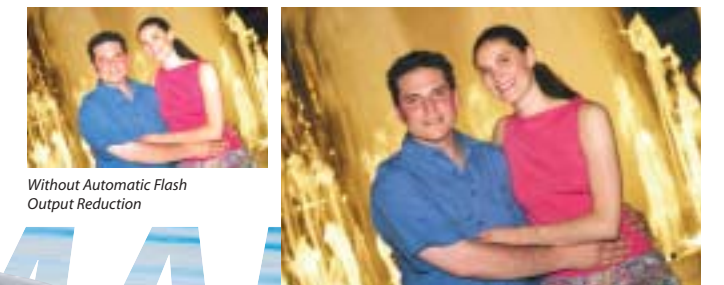
M Manual
Lets you take complete control of every system whenever you want.

THE VERSATILITY OF SLR PHOTOGRAPHY WITH POINT-AND-SHOOT SIMPLICITY.

The right side mounted **Mode Dial** makes one-handed shooting comfortable, and 12 versatile shooting modes let you make the call: shoot fully automatic, master a given situation with a **Programmed Image Control** mode, experience the excitement of manipulating shutter and aperture combinations, or go fully manual. Additional advanced exposure controls include **AE Lock**, **FE Lock** and **Auto Exposure Bracketing**, which records 3 consecutive exposures with one shot to make sure you get the effect you want. And with a touch of the **Depth-of-Field Preview Button**, you can check the front-to-back sharpness of an image just before shooting. Illumination is always flattering thanks to **Automatic Flash Output Reduction** in backlit daytime conditions, and built-in **Red-Eye Reduction**.



Auto Exposure Bracketing +1/2 ±0 -1/2



Without Automatic Flash Output Reduction
With Automatic Flash Output Reduction

ON COMMAND



PLAY IT BACK BIG TIME

Seeing your images right away is a major advantage of digital cameras. Any image that doesn't match your intention can simply be erased to make room for another. Choosing whether to save or erase a shot is especially easy with Digital Rebel because you can zoom the image from 1.5x all the way to 10x, then scroll up, down, left, and right to see

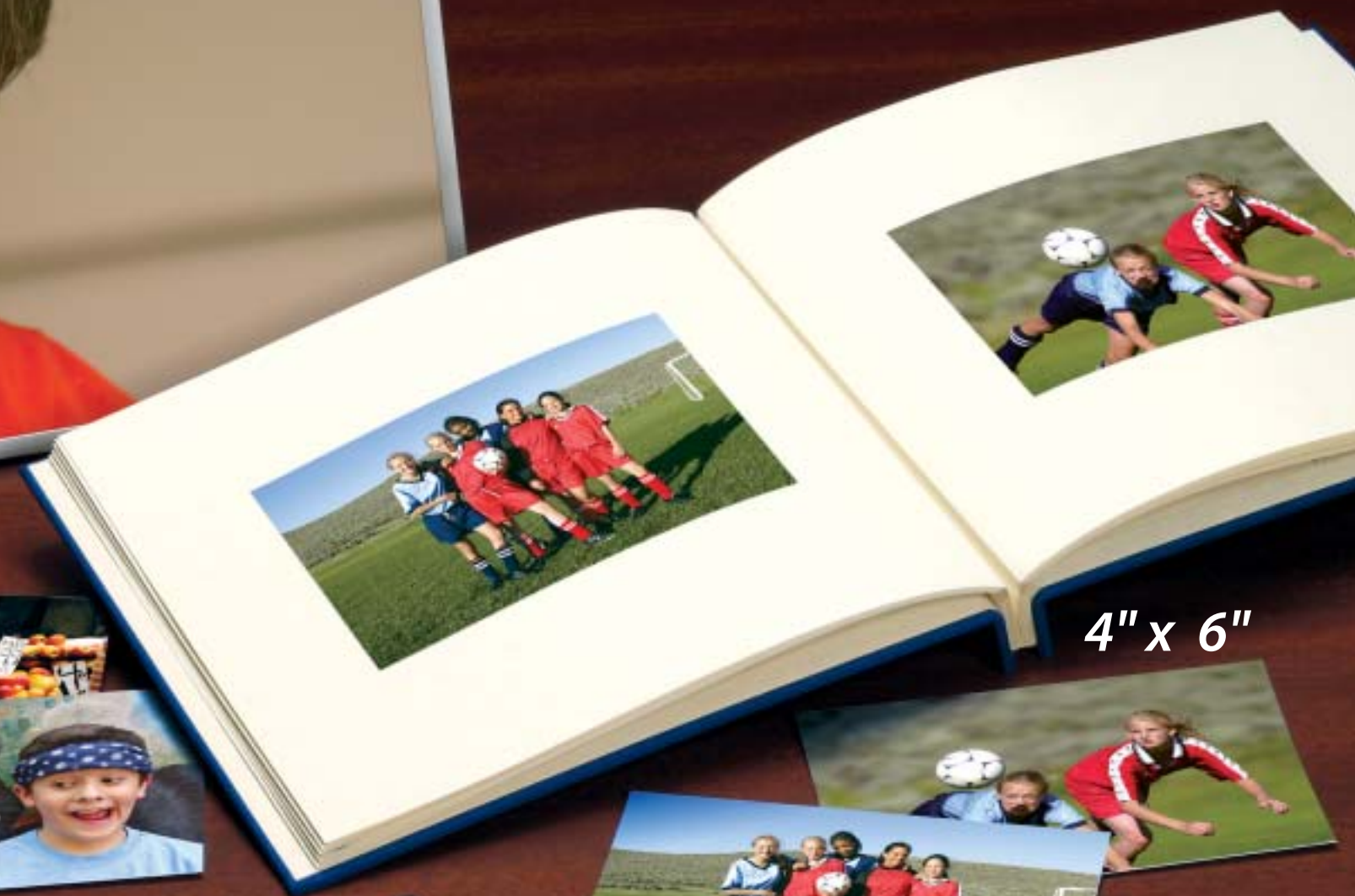
any area up close. You can even advance to the next shot in the enlarged view with no need to zoom again. In addition, a JPEG Small/Normal image mode is exclusively generated for image playback. As a result, in the Large/Fine mode, the playback time is 3 times faster than other conventional models.



Up to 10x zoom and scroll up, down, left, and right.



8.5" x 11"



4" x 6"



Credit card size

REPRODUCING AND SHARING YOUR IMAGES IS AS EXCITING AS CREATING THEM.

For instant direct printing right at home, just plug your Digital Rebel into one of Canon's fine **Card Photo Printers** or **Bubble Jet Direct Photo Printers**. New **PictBridge** compatibility allows you to connect the camera to any PictBridge-conforming printer and access a wide range of printing media, modes and styles. Canon-to-Canon direct printing, however, will produce the speediest, most reliable quality printing, with extra options for printing effects and a handy display when it's time to replace ink cartridges. With **Exif Print 2.2**, images are processed intelligently based on information the camera has recorded with each shot, and **PTP** means Windows XP and Mac OS X users won't need to install any dedicated driver software to connect the camera to a computer.



i475D Desktop Photo Printer with Digital Rebel

PLUG & PLAY

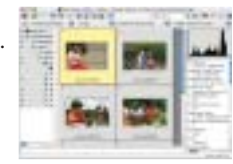


SOFTWARE SOLUTIONS

ZoomBrowser EX (for Windows): A speedy, easy-to-use program for transferring, retouching, cataloging and managing digital images.

ImageBrowser (for Macintosh): Allows Mac users to transfer, retouch, catalog and manage digital images quickly and easily.

File Viewer Utility: Quickly preview and set parameters for RAW images and convert batches of RAW files to JPEG and TIFF formats.



RemoteCapture: Use your USB-interface computer to control the camera. Includes many common operations: shutter release, drive mode, recording quality, ISO speed, metering pattern, WB mode and more.



PhotoRecord (for Windows): Works with ZoomBrowser EX to automatically create dynamic layouts, insert text anywhere on the page and print in fun ways with Canon Card Photo and BJ Photo printers.

PhotoStitch: Combine sequential shots to create precisely "stitched" horizontal, vertical or 2 x 2 composite images.

DIGITAL REBEL AND EOS SYSTEM TAKE YOU AS FAR AS YOU WANT TO GO.

Canon's **EOS System** is an excitingly varied, ever-expanding range of interchangeable 35mm and digital cameras, lenses and accessories. New technologies are engineered to work with existing EOS cameras, so the camera and lenses you buy today will continue to grow in flexibility and keep you creatively motivated now and well into the future.



EF 55-200mm f/4.5-5.6 II USM
EF-S 18-55mm f/3.5-5.6

World-renowned **Canon EF Lenses** are favorites of professionals for their optical brilliance and endless versatility. The Digital Rebel accepts all of these lenses, more than 50 in total, from ultra wide-angle to super telephoto and everything in between, including fish-eye, macro and tilt-shift lenses. Designed exclusively for the Digital Rebel, the **EF-S 18-55mm f/3.5-5.6** is a highly portable lens that covers the standard zoom range of approx. 28-90mm (in 35mm format) with smooth operation and superb resolution.



EOS SYSTEM



Speedlite 550EX Speedlite 420EX Speedlite 220EX



Macro Twin Ring Lite MT-24EX Macro Ring Lite MR-14EX

Canon Speedlites offer professional-quality illumination for virtually any subject. Although simple to operate even for beginners, they are sophisticated tools; the more you know about the system, the more you can do with it. For full featured flash photography, the Digital Rebel is compatible with Canon's entire line of EX-series Speedlites (550EX, 420EX and 220EX plus Macro Ring Lite MR-14EX and Macro Twin Lite MT-24EX for close-ups). You can also link several off-camera flashes to fire together wirelessly, with the optional Speedlite Transmitter ST-E2.



Battery Grip BG-E1

OPTIONAL ACCESSORIES

Designed exclusively for the Digital Rebel, **Battery Grip BG-E1** holds two Battery Packs BP-511 or BP-512 for approximately double the shooting time, and can also operate on a single Battery Pack. The vertical shutter release makes shooting with the camera in a vertical position just as comfortable as shooting horizontally.



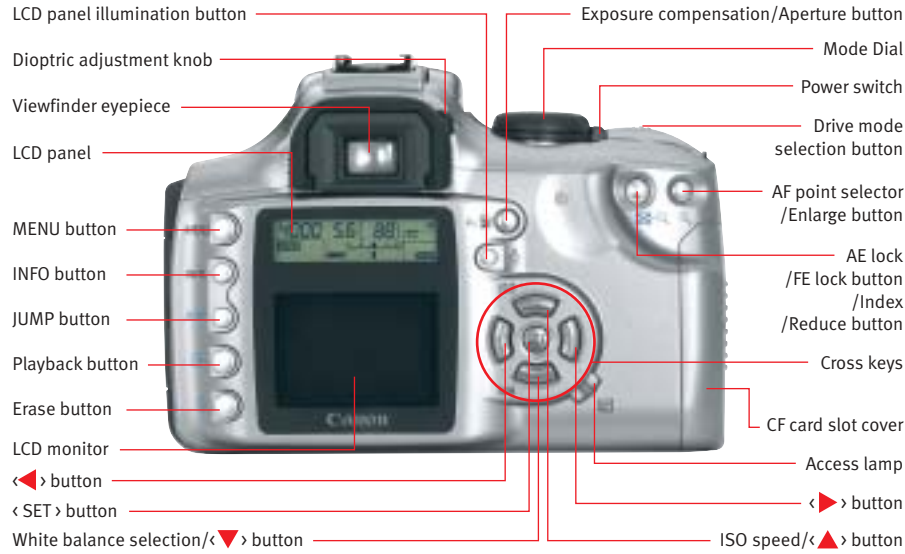
Remote Switch RS-60E3 Wireless Remote Controller RC-1/RC-5 Semi-hard Case EH-16L
Angle finder C Charge Adapter/Car Battery Cable Kit CR-560 AC Adapter Kit ACK-E2

LENS CHART

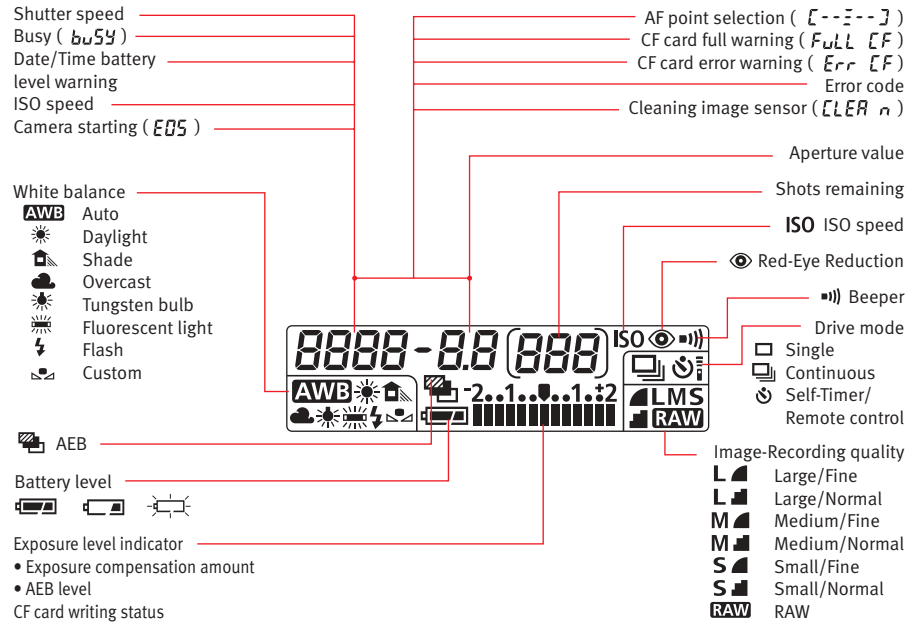
Canon EF Lenses	Focus Drive	Angle of View (Diagonal)	Groups/Elements	Minimum Aperture		Closest Focusing Distance		Filter Size (mm)	Lens Hood	Length		Weight	
				(f)	(ft.)	(m)	(mm)			(in.)	(mm)	(oz.)	(g)
Single Focal Length													
Fish-eye EF 15mm f/2.8	AFD	180°	7-8	22	0.7	0.2		Gelatin	Built-in	2-7/16	62.2	11.6	330
EF 14mm f/2.8L USM	USM	114°	10-14	22	0.8	0.25		Gelatin	Built-in	3-1/2	89.0	19.8	560
EF 20mm f/2.8 USM	USM	94°	9-11	22	0.8	0.25		72	EW-75II	2-13/16	70.6	14.3	405
EF 24mm f/1.4L USM	USM	84°	9-11	22	0.82	0.25		77	EW-83DII	3	77.4	19.4	550
EF 24mm f/2.8	AFD	84°	10-10	22	0.8	0.25		58	EW-60II	1-7/8	48.5	9.5	270
EF 28mm f/1.8 USM	USM	75°	9-10	22	0.8	0.25		58	EW-63II	2-3/16	55.6	10.9	310
EF 28mm f/2.8	AFD	75°	5-5	22	1.0	0.3		52	EW-65II	1-11/16	42.5	6.5	185
EF 35mm f/1.4L USM	USM	63°	9-11	22	0.98	0.3		72	EW-78C	3-2/5	86.0	20.5	580
EF 35mm f/2	AFD	63°	5-7	22	0.8	0.25		52	EW-65II	1-11/16	42.5	7.4	210
EF 50mm f/1.4 USM	USM	46°	6-7	22	1.5	0.45		58	ES-71II	2	50.5	10.2	290
EF 50mm f/1.8 II	MM	46°	5-6	22	1.5	0.45		52	ES-62#	1-5/8	41.0	4.6	130
EF 85mm f/1.2L USM	USM	28° 30'	7-8	16	3.1	0.95		72	EW-79II	3-5/16	84.0	2.3 lb.	1,025
EF 85mm f/1.8 USM	USM	28° 30'	7-9	22	2.8	0.85		58	ET-65III	2-13/16	71.5	15	425
EF 100mm f/2 USM	USM	24°	6-8	22	3	0.9		58	ET-65III	2-7/8	73.5	1.0 lb.	460
EF 135mm f/2L USM	USM	18°	8-10	32	3	0.9		72	ET-78II	4-7/16	112.0	26.3	750
EF 135mm f/2.8 w/ Soft Focus	AFD	18°	6-7	32	4.3	1.3		52	ET-65III	3-7/8	98.4	13.8	390
EF 200mm f/2.8L II USM	USM	12°	7-9	32	4.9	1.5		72	ET-83III	5-3/8	136.2	26.8	765
EF 300mm f/2.8L IS USM	USM	8° 15'	13-17	32	8.2	2.5	52 DI	ET-120	9-7/8	252.0	5.6 lb.	2,550	
EF 300mm f/4L IS USM	USM	8° 15'	11-15	32	4.9	1.5	77	Built-in	8-11/16	221.0	2.6 lb.	1,190	
EF 400mm f/2.8L IS USM	USM	6° 10'	13-17	32	9.8	3.0	52 DI	ET-155	13-11/16	349.0	11.8 lb.	5,370	
EF 400mm f/4 DO IS USM	USM	6° 10'	13-17	32	11.5	3.5	52 DI	ET-120	9-7/16	232.7	4.3 lb.	1,940	
EF 400mm f/5.6L USM	USM	6° 10'	6-7	32	11.5	3.5	77	Built-in	10-1/16	256.5	2.8 lb.	1,250	
EF 500mm f/4L IS USM	USM	5°	13-17	32	14.8	4.5	52 DI	ET-138	15-3/16	387.0	8.5 lb.	3,870	
EF 600mm f/4L IS USM	USM	4° 10'	13-17	32	18.0	5.5	52 DI	ET-160	18	456.0	11.8 lb.	5,360	
EF 1200mm f/5.6L USM▼	USM	2° 05'	10-13	32	46.0	14.0	48 DI	Built-in	33	836.0	36.4 lb.	16,500	
Macro													
MP-E 65mm f/2.8 1-5x Macro*	Manual	18° 40' (at 1x)	8-10	16	0.8	0.24		58	-	3-7/8	98.0	25.8	730
EF 50mm f/2.5 Compact Macro	AFD	46°	8-9	32	0.8	0.23		52	-	2-1/2	63.0	9.9	280
EF 100mm f/2.8 Macro USM	USM	24°	8-12	32	1.0	0.31		58	ET-67	4-11/16	119.0	21.1	600
EF 180mm f/3.5L Macro USM	USM	13° 40'	12-14	32	1.6	0.48		72	ET-78II	7-3/8	186.6	2.4 lb.	1,090
Tilt-Shift													
TS-E 24mm f/3.5L*	Manual	84°	9-11	22	1.0	0.3		72	EW-75BII	3-7/16	86.7	1.3 lb.	570
TS-E 45mm f/2.8*	Manual	51°	9-10	22	1.3	0.4		72	EW-79BII	3-9/16	90.1	1.4 lb.	645
TS-E 90mm f/2.8*	Manual	27°	5-6	32	1.6	0.5		58	ES-65III	3-7/16	88.0	1.2 lb.	565
Extenders													
EF 1.4x II**	-	-	4-5	-	-	-	-	-	-	1-1/16	27.2	7.8	220
EF 2x II**	-	-	5-7	-	-	-	-	-	-	2-5/16	57.9	9.3	265
Life Size Converter EF***	-	-	3-4	-	-	-	-	-	-	1-3/8	34.9	5.6	160
Zooms													
EF 16-35mm f/2.8L USM	USM	108°10'-63°	10-14	22	0.9	0.28		77	EW-83E	4-1/8	103	1.3 lb.	600
EF 17-40mm f/4L USM	USM	74°-29°	9-12	22	0.92	0.28		77	EW-83E	3-6/13	96.8	17.6	500
EF-S 18-55mm f/3.5-5.6†	MM	75° 20' - 27° 50'	9-11	22-38	0.92	0.28		58	EW-60C	2-3/8	66.2	6.7	190
EF 20-35mm f/3.5-4.5 USM	USM	94°-63°	11-12	22-27	1.1	0.34		77	EW-83II	2-3/4	69.0	12	340
EF 24-85mm f/3.5-4.5 USM	USM	84°-28° 30'	12-15	22-32	1.6	0.5		67	EW-73II	2-3/4	69.5	13.4	380
EF 24-70mm f/2.8L USM	USM	74°-29°	13-16	22	1.25	0.38		77	EW-83F	4-7/8	123.5	2.1 lb.	950
EF 28-80mm f/3.5-5.6 II	MM	75°-30°	10-10	22-38	1.25	0.38		58	EW-60C	2-13/16	71.2	7.8	200
EF 28-90mm f/4-5.6 II USM	USM	75°-27°	8-10	22-32	1.3	0.38		58	EW-60C	2-13/16	71.0	6.7	190
EF 28-90mm f/4-5.6 II	MM	75°-27°	8-10	22-32	1.3	0.38		58	EW-60C	2-13/16	71.0	6.7	190
EF 28-105mm f/3.5-4.5 II USM	USM	75°-23° 20'	12-15	22-27	1.6	0.5		58	EW-63II	3	75.0	13.1	375
EF 28-105mm f/4-5.6 USM	USM	75°-23° 20'	9-10	22-32	1.57	0.48		58	EW-63B	2-11/16	68.0	7.4	210
EF 28-135mm f/3.5-5.6 IS USM	USM	75°-18°	12-16	22-36	1.64	0.5		72	EW-78BII	3-13/16	96.8	18.9	540
EF 28-200mm f/3.5-5.6 USM	USM	75°-12°	12-16	22-36	1.5	0.45		72	EW-78D	3-1/2	89.6	17.6	500
EF 35-80mm f/4-5.6 III	MM	63°-30°	8-8	22-32	1.3	0.4		52	EW-54II	2-1/2	63.5	6.2	175
EF 35-350mm f/3.5-5.6L USM	USM	63°-7°	15-21	22-32	2.0	0.6		72	EW-78II	6-9/16	167.4	3.1 lb.	1,385
EF 55-200mm f/4-5.6 II USM	USM	43°-12°	13-13	22-27	3.9	1.2		52	ET-54	3-1/8	97.3	10.9	310
EF 70-200mm f/2.8L IS USM	USM	34°-12°	18-23	32	4.6	1.4		77	ET-86	7-13/16	197.0	3.2 lb.	1,470
EF 70-200mm f/2.8L USM	USM	34°-12°	15-18	32	4.9	1.5		77	ET-83II	7-5/8	193.6	2.9 lb.	1,310
EF 70-200mm f/4L USM	USM	34°-12°	13-16	32	3.9	1.2		67	ET-74	6-7/8	172.0	25.0	705
EF 75-300mm f/4-5.6 IS USM	USM	32°11'-8°15'	10-15	32-45	4.9	1.5		58	ET-64II	5-7/16	137.2	1.4 lb.	650
EF 75-300mm f/4-5.6 III USM	USM	32°11'-8°15'	9-13	32-45	4.9	1.5		58	ET-60	4-13/16	122.0	16.8	480
EF 75-300mm f/4-5.6 III	MM	32°11'-8°15'	9-13	32-45	4.9	1.5		58	ET-60	4-13/16	122.0	16.8	480
EF 80-200mm f/4-5.6 II	MM	30°-12°	7-10	22-27	4.9	1.5		52	ET-54	3-1/8	78.5	8.8	250
EF 100-300mm f/4-5.6L USM	USM	24°-8° 15'	10-13	32-38	4.9	1.5		58	ET-65III	4-3/4	121.5	1.2 lb.	540
EF 100-400mm f/4.5-5.6L IS USM	USM	24°-6° 10'	14-17	32-38	5.9	1.8		77	ET-83C	7-7/16	189.0	3.0 lb.	1,380

USM = Ultrasonic Motor; AFD = Arc Form Drive; MM = Micro Motor; DI = Drop-in Filter; L = L-Series Professional Lens; # = With Hood Adapter 62; ▼ Special order item
 * TS-E AND MP-E lenses are manual focus only, with automatic diaphragm.
 ** Extenders EF 1.4x II and EF 2x II are for exclusive use with EF 70-200mm f/2.8L, 70-200mm f/2.8L IS, 70-200mm f/2.8L Macro, 200mm f/1.8L, 200mm f/2.8L, 300mm f/2.8L IS, 300mm f/4L IS, 400mm f/2.8L IS, 400mm f/4 DO IS, 400mm f/5.6L, 500mm f/4L IS, 600mm f/4L IS, and 1200mm f/5.6L. (Manual focus only when EF 1.4x II is used with EF 100-400mm f/5.6L, 400mm f/5.6L, 500mm f/4L, 1200mm f/5.6L, and with 180mm f/3.5L Macro when focused closer than 2.6 feet; or with Extender EF 2x II when used with EF 70-200mm f/4L, 100-400mm f/4.5-5.6L, 180mm f/3.5L Macro, 300mm f/4L IS, 300mm f/4L IS, 300mm f/4L IS, 400mm f/4 DO IS, 400mm f/5.6L, 500mm f/4L, 500mm f/4L, 600mm f/4L, and 1200mm f/5.6L.)
 *** Life Size Converter EF is for exclusive use with EF 50mm f/2.5 Compact Macro.
 † Available only with the Digital Rebel kit. Exclusively designed for Digital Rebel. Cannot be mounted on any other EOS camera.
 Subject to change without notice.

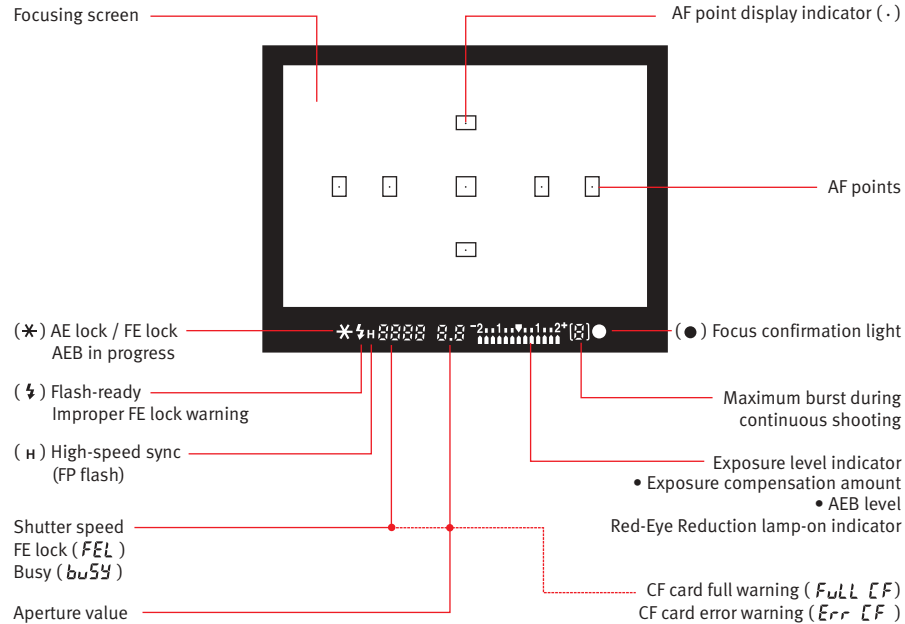
NOMENCLATURE



LCD PANEL INFORMATION



VIEWFINDER INFORMATION



SPECIFICATIONS

TYPE
Type: Digital AF/AE SLR
Recording Medium: Type I and II CF card
Image Size: 22.7 x 15.1mm (0.89 x 0.59 in.)
Compatible Lenses: Canon EF lenses including EF-S Lenses. (Focal length conversion factor: Equivalent to approx. 1.6x indicated focal length compared to 35mm format.)
Lens Mount: Canon EF mount

IMAGING ELEMENT
Type: High-sensitivity, high-resolution, single-plate, color CMOS
Pixels: Effective pixels: Approx. 6.3 megapixels
Total pixels: Approx. 6.5 megapixels
Aspect Ratio: 2:3 (Vertical:Horizontal)
Color Filter System: RGB primary color filter
Low-pass Filter: Located in front of the imaging element, non-removable

RECORDING SYSTEM
Recording Format: Design rule for Camera File system (JPEG) and RAW. Exif 2.2 compliant.
Image Format: JPEG and RAW
File Size (on CF card): JPEG: (1) Large/Fine: Approx. 3.1 MB (3072 x 2048), (2) Large/ Normal: Approx. 1.8 MB (3072 x 2048), (3) Middle/Fine: Approx. 1.8 MB (2048 x 1360), (4) Middle/Normal: Approx. 1.2 MB (2048 x 1360), (5) Small/Fine: Approx. 1.4 MB (1536 x 1024), (6) Small/ Normal: Approx. 0.9 MB (1536 x 1024); RAW: (7) Middle/Fine: Approx. 7 MB (3072 x 2048)
Folder Setting: Automatic
File Numbering: (1) Continuous numbering, (2) Auto reset
Processing Parameters: Standard parameters plus up to three custom processing parameters can be set
Interface: USB

WHITE BALANCE
Settings: Auto (Auto, daylight, shade, overcast, tungsten bulb, fluorescent light, flash), Manual (Custom: read off photo quality gray card or white subject, color temperature)

VIEWFINDER
Type: Eye-level SLR (with fixed pentamirror)
Coverage: Approx. 95% vertically and horizontally (Coverage against JPEG Large)
Magnification: 0.8x (-1 diopter with 50mm lens at infinity)

Eyepoint: 21mm
Built-in Diopter Correction: -3.0 +1.0 diopter
Focusing Screen: Fixed
Mirror: Quick-return half mirror (Transmittance: reflectance ratio of 40:60, no mirror cut-off with lenses up to EF 600mm f/4)
Viewfinder Information: AF points, AE lock, AEB in progress, flash ready, improper FE lock warning, high-speed sync, flash exposure compensation, shutter speed, bulb, FE lock, processing data, aperture, exposure level (exposure compensation, manual exposure level, AEB level, flash exposure compensation, red-eye reduction lamp-on indicator), Max. burst during continuous shooting, AF/MF focus confirmation, CF card full, CF card error, no CF card
Depth-of-field: Enabled with depth-of-field preview button
Eyepiece Shutter: None

AUTOFOCUS
Type: TTL-CTSR with AF-dedicated CMOS sensor
AF Points: 7
AF Working Range: EV 0.5 -18 (at ISO 100)
Focusing Modes: One-Shot AF, Predictive AI Servo AF, AI Focus AF (Automatically selects One-Shot AF or AI Servo AF), Manual focusing (MF)
AF Point Selection: Automatic selection, manual selection
Selected AF Point Display: Superimposed in viewfinder and indicated on LCD panel.
AF-assist Beam: Intermittent firing of built-in flash, effective range: approx. 13.1 ft/4m at center, approx. 11.5 ft/3.5m at periphery

EXPOSURE CONTROL
Metering Modes: Metering Modes: Max. aperture TTL metering with 35-zone SPC. (1) Evaluative metering, (2) Partial metering at center (approx. 9% of viewfinder), (3) Center-weighted average metering (in manual exposure mode)
Metering Range: EV 1-20 (at 20°C with 50mm f/1.4 lens at ISO 100)
Exposure Control Systems: Program AE (shiftable), shutter-priority AE, aperture-priority AE, auto depth-of-field AE, full auto, programmed image control modes (Portrait, Landscape, Close-up, Sports, Night Portrait, and Flash Off), E-TTL autoflash program AE, and manual.
ISO Speed Range: Equivalent to ISO 100-1600
Up to +/-2 stops in 1/2 or 1/3-stop increments (1) AEB (Auto exposure bracketing), (2) Manual exposure compensation, (3) Flash exposure compensation.
AE Lock: Operates in One-Shot AF mode evaluative metering when focus is achieved. Manual: Enabled with AE lock button. No AE lock in Basic Zone modes.

SHUTTER
Type: Vertical-travel, mechanical, focal-plane shutter with all speeds electronically-controlled.
Shutter Speeds: 1/4000 to 30 sec. (1/3-stop increments), bulb, X-sync at 1/200 sec.
Shutter Release: Soft-touch electromagnetic release
Noise Reduction: None (Not necessary)
Self-Timer: 10-sec. delay.
Remote Control: Remote Control with RS-60E3 terminal or Wireless Remote Controller RC-1/RC5

FLASH
Built-in Flash: Type: Auto pop-up, retractable, built-in flash in the pentamirror hump.
Guide No: 13/43 (at ISO 100 in meters/feet)
Recycling time: Approx. 3 sec.
Flash ready indicator: Flash-ready icon lights on in viewfinder (equivalent to approx. 28mm in 35mm format)

EOS-dedicated Speedlite: E-TTL auto flash with EX series Speedlite.
PC Terminal provided.

DRIVE SYSTEM
Drive Modes: Single, Continuous, Self-Timer
Continuous Shooting Speed: Approx. 2.5 fps (at 1/250 sec. or faster for all recording qualities)
Max. Burst During Continuous Shooting: 4 shots

LCD MONITOR
Type: TFT color LCD monitor
Monitor Size: 1.8 inches
Pixels: Approx. 118,000 pixels (Displayed pixels)
Coverage: Approx. 100% (for JPEG images)
Brightness Adjustment: 5-levels (settable with menu's "LCD brightness")

IMAGE PLAYBACK
Image Display Format: (1) Single image, (2) Single image with information, (3) 9-image index, (4) Enlarged, (5) Auto play
Highlight Alert: In the single image with information display mode, the highlight portions containing no image information will blink.

IMAGE PROTECTION AND ERASE
Protection: A single image can be protected or unprotected
Erase: A single image or all images stored in a CompactFlash card can be erased if they are unprotected.

MENUS
Menu Categories: (1) Shooting Menus [8], (2) Playback Menus [4], (3) Setup Menus [14]
LCD Monitor Language: English, German, French, Dutch, Danish, Finnish, Italian, Norwegian, Swedish, Spanish, Chinese (simplified), and Japanese.
Firmware Update: Enabled by the user

POWER SOURCE
Battery: One Battery Pack BP-511/512 (lithium ion rechargeable battery)
Number of Shots:

Configuration	No Flash Used	50% with Flash
Body	Normal temp (68°F/20°C) 600 frames	400 frames
	Low temp (32°F/0°C) 450 frames	350 frames
w/BG-E1 (BP-511x2)	Normal temp (68°F/20°C) 1200 frames	800 frames
	Low temp (32°F/0°C) 900 frames	700 frames

DIMENSIONS AND WEIGHT
Dimensions (W x H x D): 5.6 x 3.9 x 2.9 in. / 142 x 99 x 72.4mm
Weight: 19.7 oz. / 560g

WORKING CONDITIONS
Working Temperature Range: 0 - 40° C / 32-104° F
Working Humidity: 85% or less

- All the specifications above are based on Canon's testing and measuring standards.
- The camera's specifications and physical appearance are subject to change without notice.

Microsoft® and Windows® are registered trademarks or trademarks of Microsoft Corporation in the United States and / or other countries. Macintosh® is a registered trademark or trademark of Apple Computer Inc. in the United States and / or other countries. CompactFlash™ is a trademark of SanDisk Corporation. Microdrive™ is a trademark of IBM Corporation. Adobe Photoshop is a registered trademark of Adobe Systems Incorporated and its subsidiaries in each country. The other product and brand names appearing in this brochure are trademarks or registered trademarks of their respective owners. TFT monitor images shown in this brochure are simulated.

Compatible Operating Systems and Computer Environments

Platform	Windows	Macintosh
Operating System	Windows 98SE/Me/2000/XP	Mac OS 9.0 - 9.2 (Mac OS 9.2 recommended) Mac OS X (Version 10.2 recommended)
Computer	PC with one of the above OS preinstalled and a USB port as a standard feature *Upgraded machines not supported.	Macintosh computer with one of the above OS installed and a USB port as a standard feature (users of first-generation iMacs require a firmware update.)
CPU	Windows 98SE/Me/2000: 150 MHz PC Pentium or better Windows XP: 300 MHz Pentium or better	Power PC
RAM	Windows 98SE/Me/2000: 128 MB required Windows XP: 256 MB required	Mac OS 9.0 - 9.2: 128 MB required Mac OS X (10.1, 10.2): 256 MB required
Interface	USB	
Available hard disk space (MB/ or more)	File Viewer Utility: 100 RemoteCapture: 20 WIA Driver: 25 TWAIN Driver: 25 ZoomBrowser EX: 120 Photo Record: 40 PhotoStitch: 40	File Viewer Utility: 100 RemoteCapture: 15 ImageBrowser: 50 PhotoStitch: 30
Display	Min. 800 x 600 dots, High Color (16-bit), 1024 x 768 dots, True Color (32-bit) or more recommended	Min. 800 x 600 dots, 32,000 colors, 1024 x 768 dots or more recommended
Remarks	CD-ROM drive required for installation. * The WIA driver runs on Windows XP and Windows Me. * The TWAIN driver runs on Windows 2000 and Windows 98SE.	

System Chart

