

Sierra Pro XL™

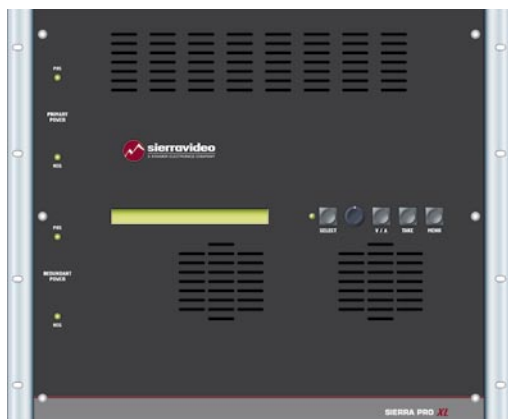
- PREMIERE ROUTING SWITCHER FOR PROFESSIONAL VIDEO ENVIRONMENTS
- WIDEBAND VIDEO & STEREO AUDIO
- RGBHV, RGBS, COMPONENT VIDEO & S-VIDEO



Sierra Pro XL

Wideband Routing Switchers for Professional Presentation Environments

Sierra Video's premiere line of high bandwidth routing switchers provides top-of-the-line performance in the most demanding presentation environments. With 450MHz bandwidth in 8 Series to 32 Series models, and with 500MHz bandwidth in 64 Series models, incredibly flat response, Matrix Mapping and IP connectivity, Sierra Pro XL routing switchers are an outstanding combination of value and performance.



Matrix Sizes

INPUTS	OUTPUTS
8x	4 8 16
12x	4 8
16x	8 16 32
32x	16 32
32x 40x 48x 56x 64x	32 40 48 56 64

FORMATS

Each frame size can be ordered as a 5-channel (RGBHV) system or a 3-channel (RGB) system with or without balanced stereo audio, or it can be ordered with high bandwidth video boards in place of the H and V boards so that video can be input into all channels (or levels) of the routing switcher.

Video Features

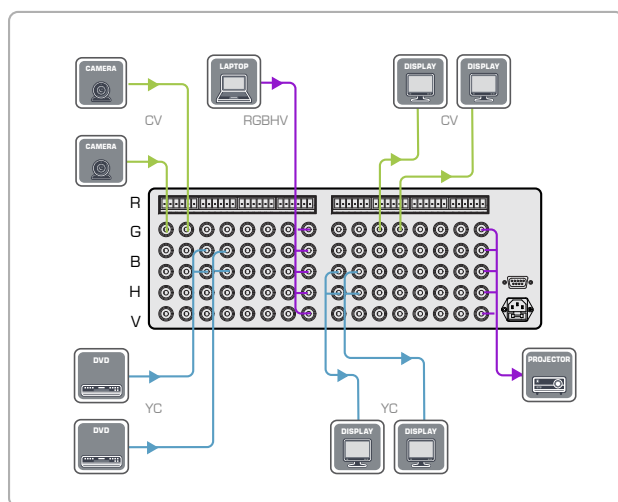
High Bandwidth – 450MHz @ -3dB fully loaded in 8 Series to 32 Series models. 500MHz @ -3dB fully loaded in 64 Series models. Proven flat response at high bandwidths provides optimal performance.

Low Crosstalk – -80dB @ 1MHz, -47dB @ 100MHz, -30dB @ 150MHz.

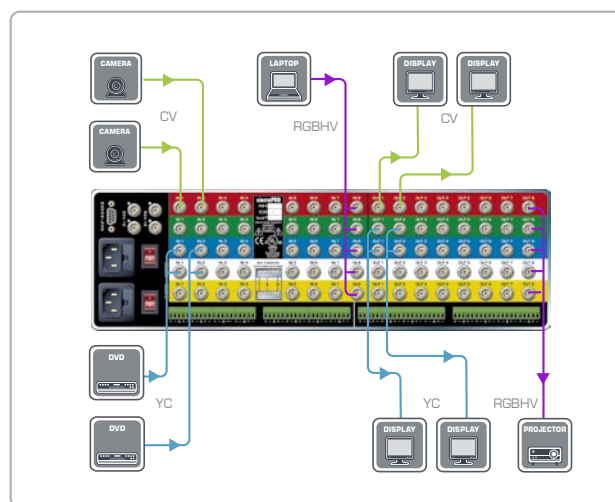
Room Grouping Capability - Several inputs may be grouped and operated independently of other input groups on the routers. This allows one router to be used for multiple "rooms" where the control system for each room will address only the inputs and outputs assigned to that room.

Matrix Mapping™ Universal Breakaway Switching

Find more real estate without a costly upgrade



Competitive Models



Sierra Pro XL Models

Sierra Video's Matrix Mapping Universal Breakaway Switching allows switching of every level of every input of the router independently. Switch a single level or any combination of levels of the R, G, B, H, V, left audio and right audio levels of any input. For example, input a composite video signal on the R level of input one and an s-Video (Y/C) signal on the G and B levels of input one and switch only the composite video signal on the R level, switch only the s-Video Y and C signals on the G and B levels, or switch all three levels together.

Sync Features

Sync Reporting - Through the front panel or RS-232, the routing switcher can capture and report the input sync rates for each input signal.

Input Detection - 200mV. Re-shapes and re-squares sync to output correct TTL level.

Selectable Termination - 510 or 75 Ohm (each input).

Genlock Input - Looping internal sync input for vertical interval switching.

Audio Features

Audio Type - Balanced or unbalanced stereo on terminal blocks.

Input (Level) Adjustment Capability - - 8dB to + 20.5dB.

Output (Volume) Adjustment Capability - Mute, - 59.5dB to + 15dB.

No Zipper Effect - Sierra Pro XL routing switchers employ zero crossover chip technology which eliminates the annoying "zipper sound effect" associated with digital volume controls.

Audio Mute Capability.

Crosstalk - < - 80dB @ 1kHz (unity gain), < - 60dB @ 10kHz (unity gain).

Dynamic Range - 96dB (20-20kHz unweighted) (unity gain).

Comprehensive Control Options

IP (Ethernet Control) - Via standard TCP/IP socket connection, Mac or PC.

Front Panel Control - Local control with 80 character LCD readout in 8 Series through 32 Series frames, XY push button control in 64 Series frames.

RS-232 & RS-422.

RS-485 For Optional Control Panels.

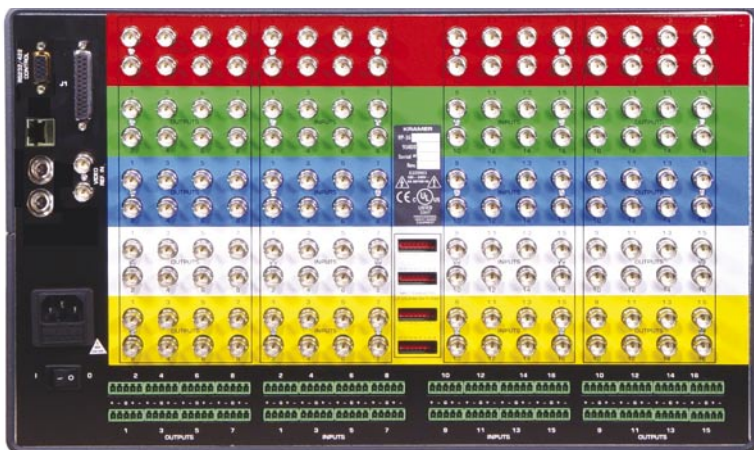
TyLinx Pro™ and TyLinx Pro Net™ Router Control Software - Advanced, customizable GUI control interface.

Remote Control Panels - Programmable, Single Bus, and XY panels optional.

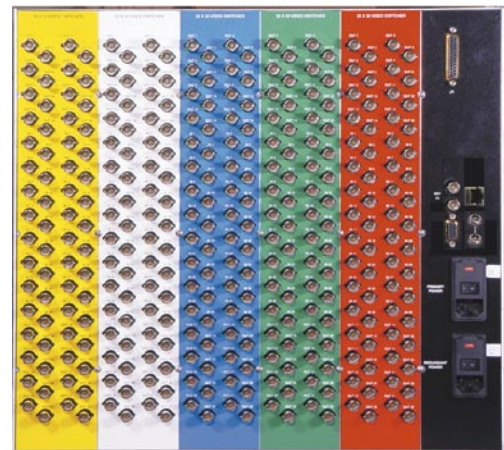
Redundant Power Supply

Optional in 8x16, 16x8 and 16x16 models.

Standard on 16x32, 32x16, 32x32 and all 64 Series models.



Sierra Pro 1616V5Sxl

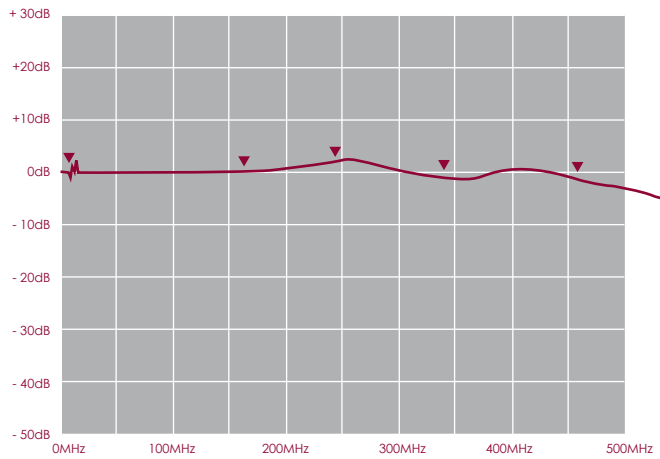


Sierra Pro 3232V5xl

MODEL	FORMAT	INPUTS	OUTPUTS	SIZE	HEIGHT	DESCRIPTION
84V3xl	RGB	8	4	3RU	5.25"	8x4 3-channel wideband video ▪ 450MHz ▪ IP Control
84V3Sxl	RGB	8	4	3RU	5.25"	8x4 3-channel wideband video + stereo audio ▪ 450MHz ▪ IP Control
84V5xl	RGB + HV	8	4	3RU	5.25"	8x4 3-channel wideband video, 2 sync channels ▪ 450MHz ▪ IP Control
84V5Sxl	RGB + HV	8	4	3RU	5.25"	8x4 3-channel wideband video, 2 sync channels + stereo audio ▪ 450MHz ▪ IP Control
84V5Vxl	5-level video	8	4	3RU	5.25"	8x4 Custom format 5-channel (no sync) wideband video ▪ 450MHz ▪ IP Control
84V5VSxl	5-level video		4	3RU	5.25"	8x4 Custom format 5-channel (no sync) wideband video + stereo audio ▪ 450MHz ▪ IP Control
88V3xl	RGB	8	8	3RU	5.25"	8x8 3-channel wideband video ▪ 450MHz ▪ IP Control
88V3Sxl	RGB	8	8	3RU	5.25"	8x8 3-channel wideband video + stereo audio ▪ 450MHz ▪ IP Control
88V5xl	RGB + HV	8	8	3RU	5.25"	8x8 3-channel wideband video, 2 sync channels ▪ 450MHz ▪ IP Control
88V5Sxl	RGB + HV	8	8	3RU	5.25"	8x8 3-channel wideband video, 2 sync channels + stereo audio ▪ 450MHz ▪ IP Control
88V5Vxl	5-level video	8	8	3RU	5.25"	8x8 Custom format 5-channel (no sync) wideband video ▪ 450MHz ▪ IP Control
88V5VSxl	5-level video	8	8	3RU	5.25"	8x8 Custom format 5-channel (no sync) wideband video + stereo audio ▪ 450MHz ▪ IP Control
816V3xl	RGB	8	16	6RU	10.5"	8 x 16 three-channel wideband video ▪ 450MHz ▪ IP Control ▪ Redundant power supply optional
816V3Sxl	RGB	8	16	6RU	10.5"	8 x 16 three-channel wideband video + stereo audio ▪ 450MHz ▪ IP Control ▪ Redundant power supply optional
816V5xl	RGB + HV	8	16	6RU	10.5"	8 x 16 three-channel wideband video, two sync channels ▪ 450MHz ▪ IP Control ▪ Redundant power supply optional
816V5Sxl	RGB + HV	8	16	6RU	10.5"	8 x 16 three-channel wideband video, two sync channels + stereo audio ▪ 450MHz ▪ IP Control ▪ Redundant power supply optional
816V5Vxl	5-level video	8	16	6RU	10.5"	8 x 16 Custom Format five-channel (no sync) wideband video ▪ 450MHz ▪ IP Control ▪ Redundant power supply optional
816V5VSxl	5-level video	8	16	6RU	10.5"	8 x 16 Custom Format five-channel (no sync) wideband video + stereo audio ▪ 450MHz ▪ IP Control ▪ Redundant power supply optional
1204V3xl	RGB	12	4	3RU	5.25"	12x4 3-channel wideband video ▪ 450MHz ▪ IP Control
1204V3Sxl	RGB	12	4	3RU	5.25"	12x4 3-channel wideband video + stereo audio ▪ 450MHz ▪ IP Control
1204V5xl	RGB + HV	12	4	3RU	5.25"	12x4 3-channel wideband video, 2 sync channels ▪ 450MHz ▪ IP Control
1204V5Sxl	RGB + HV	12	4	3RU	5.25"	12x4 3-channel wideband video, 2 sync channels + stereo audio ▪ 450MHz ▪ IP Control
1204V5Vxl	5-level video	12	4	3RU	5.25"	12x4 Custom format 5-channel (no sync) wideband video ▪ 450MHz ▪ IP Control
1204V5VSxl	5-level video	12	4	3RU	5.25"	12x4 Custom format 5-channel (no sync) wideband video + stereo audio ▪ 450MHz ▪ IP Control
1208V3xl	RGB	12	8	3RU	5.25"	12x8 3-channel wideband video ▪ 450MHz ▪ IP Control
1208V3Sxl	RGB	12	8	3RU	5.25"	12x8 3-channel wideband video + stereo audio ▪ 450MHz ▪ IP Control
1208V5xl	RGB + HV	12	8	3RU	5.25"	12x8 3-channel wideband video, 2 sync channels ▪ 450MHz ▪ IP Control
1208V5Sxl	RGB + HV	12	8	3RU	5.25"	12x8 3-channel wideband video, 2 sync channels + stereo audio ▪ 450MHz ▪ IP Control
1208V5Vxl	5-level video	12	8	3RU	5.25"	12x8 Custom format 5-channel (no sync) wideband video ▪ 450MHz ▪ IP Control
1208V5VSxl	5-level video	12	8	3RU	5.25"	12x8 Custom format 5-channel (no sync) wideband video + stereo audio ▪ 450MHz ▪ IP Control

MODEL	FORMAT	INPUTS		SIZE	HEIGHT	DESCRIPTION
1608V3xl	RGB	16	8	6RU	10.5"	16x8 3-channel wideband video ▪ 450MHz ▪ IP Control ▪ Redundant power supply optional
1608V3Sxl	RGB	16	8	6RU	10.5"	16x8 3-channel wideband video + stereo audio ▪ 450MHz ▪ IP Control ▪ Redundant power supply optional
1608V5xl	RGB + HV	16	8	6RU	10.5"	16x8 3-channel wideband video, 2 sync channels ▪ 450MHz ▪ IP Control ▪ Redundant power supply optional
1608V5Sxl	RGB + HV	16	8	6RU	10.5"	16x8 3-channel wideband video, 2 sync channels + stereo audio ▪ 450MHz ▪ IP Control ▪ Redundant power supply optional
1608V5Vxl	5-level video	16	8	6RU	10.5"	16x8 Custom format 5-channel (no sync) wideband video ▪ 450MHz ▪ IP Control ▪ Redundant power supply optional
1608V5VSxl	5-level video	16	8	6RU	10.5"	16x8 Custom format 5-channel (no sync) wideband video + stereo audio ▪ 450MHz ▪ IP Control ▪ Redundant power supply optional
1616V3xl	RGB	16	16	6RU	10.5"	16x16 3-channel wideband video ▪ 450MHz ▪ IP Control ▪ Redundant power supply optional
1616V3Sxl	RGB	16	16	6RU	10.5"	16x16 3-channel wideband video + stereo audio ▪ 450MHz ▪ IP Control ▪ Redundant power supply optional
1616V5xl	RGB + HV	16	16	6RU	10.5"	16x16 3-channel wideband video, 2 sync channels ▪ 450MHz ▪ IP Control ▪ Redundant power supply optional
1616V5Sxl	RGB + HV	16	16	6RU	10.5"	16x16 3-channel wideband video, 2 sync channels + stereo audio ▪ 450MHz ▪ IP Control ▪ Redundant power supply optional
1616V5Vxl	5-level video	16	16	6RU	10.5"	16x16 Custom format 5-channel (no sync) wideband video ▪ 450MHz ▪ IP Control ▪ Redundant power supply optional
1616V5VSxl	5-level video	16	16	6RU	10.5"	16x16 Custom format 5-channel (no sync) wideband video + stereo audio ▪ 450MHz ▪ IP Control ▪ Redundant power supply optional
1632Sxl	Stereo Audio	16	32	4RU	7"	16 x 32 stereo audio ▪ IP Control ▪ Redundant power supply standard
1632V3xl	RGB	16	32	9RU	15.75"	16 x 32 three-channel wideband video ▪ 450MHz ▪ IP Control ▪ Redundant power supply standard
1632V5xl	RGB + HV	16	32	9RU	15.75"	16 x 32 three channels wideband video, two sync channels + stereo audio ▪ 450MHz ▪ IP Control ▪ Redundant power supply standard
1632V5Vxl	5-level video	16	32	9RU	15.75"	16 x 32 Custom Format five-channel (no sync) wideband video ▪ 450MHz ▪ IP Control ▪ Redundant power supply standard
3216Sxl	Stereo Audio	32	16	4RU	7"	32x16 stereo audio. Companion units for 3216 video frames, not stand-alone units. ▪ IP Control ▪ Redundant power supply standard
3216V3xl	RGB	32	16	9RU	15.75"	32x16 3-channel wideband video ▪ 450MHz ▪ IP Control ▪ Redundant power supply standard
3216V5xl	RGB + HV	32	16	9RU	15.75"	32x16 3-channel wideband video, 2 sync channels ▪ 450MHz ▪ IP Control ▪ Redundant power supply standard
3216V5Vxl	5-level video	32	16	9RU	15.75"	32x16 Custom format 5-channel (no sync) wideband video ▪ 450MHz ▪ IP Control ▪ Redundant power supply standard
3232Sxl	Stereo Audio	32	32	4RU	7"	32x32 stereo audio. Companion units for 3216 video frames, not stand-alone units. ▪ IP Control ▪ Redundant power supply standard
3232V3xl	RGB	32	32	9RU	15.75"	32x32 3-channel wideband video ▪ 450MHz ▪ IP Control ▪ Redundant power supply standard
3232V5xl	RGB + HV	32	32	9RU	15.75"	32x32 3-channel wideband video, 2 sync channels ▪ 450MHz ▪ IP Control ▪ Redundant power supply standard
3232V5Vxl	5-level video	32	32	9RU	15.75"	32x32 Custom format 5-channel (no sync) wideband video ▪ 450MHz ▪ IP Control ▪ Redundant power supply standard
6464S	Stereo Audio	Up to 64	Up to 64	5RU	8.75"	Up to 64 x 64 stereo audio ▪ IP Control ▪ Redundant power supply standard
6464V3xl	RGB	Up to 64	Up to 64	20RU	35"	Up to 64 x 64 three-channel wideband video ▪ 500MHz ▪ IP Control ▪ Redundant power supply standard
6464V5xl	RGB + HV	Up to 64	Up to 64	20RU	35"	Up to 64 x 64 three-channel wideband video, two sync channels ▪ 500MHz ▪ IP Control ▪ Redundant power supply standard
6464V5Vxl	5-level video	Up to 64	Up to 64	20RU	35"	Up to 64 x 64 Custom Format five-channel (no sync) wideband video ▪ 500MHz ▪ IP Control ▪ Redundant power supply standard

INCREDIBLY FLAT RESPONSE PERFORMANCE



Typical Response Curve for a Sierra Pro XL Routing Switcher, Fully Loaded

Wideband Video

BANDWIDTH	8 Series to 32 Series	450MHz @ -3dB
	64 Series	500MHz @ -3dB
VIDEO GAIN	Unity	
CROSSTALK	- 80dB @ 1MHz	
	- 47dB @ 100MHz	
	- 30dB @ 150MHz	
SWITCHING SPEED	Deterministic	
INPUT		
VIDEO LEVEL	8 Series to 32 Series	0.2V to 5V p-p
	64 Series	0.3V to 2.5V p-p
IMPEDANCE	75 Ohm	
RETURN LOSS	< - 30dB @ 5MHz	
CONNECTOR TYPE	BNC	
OUTPUT		
VIDEO LEVEL	0.2V to 5Vp-p	
IMPEDANCE	75 Ohm	
RETURN LOSS	< - 30dB @ 5MHz	
CONNECTOR TYPE	BNC	



Analog Audio - 8 Series to 32 Series

INPUT GAIN ADJUST RANGE	+20.5dB to -8dB
OUTPUT GAIN ADJUST RANGE	+15dB to -59.5dB and fully off (MUTE)
FREQUENCY RESPONSE	20Hz to 20kHz +/- 0.5dB (typical - 3dB @ 120kHz) (unity gain)
DYNAMIC RANGE	96dB (20-20kHz unweighted) (unity gain)
CROSSTALK (ALL INPUTS HOSTILE)	< - 80dB @ 1kHz (unity gain);
IM & THD (20 TO 20KHZ)	< - 60dB @ 10kHz (unity gain) THD: < 0.025% (20Hz - 20kHz @ + 4dBu) (unity gain) IM: < 0.025 SMPTE-DIN @ + 4dBu (unity gain) < 0.01% CCIF @ + 16dBu (unity gain)
INPUT	
MAX. SOURCE LEVEL	+ 24dBu
IMPEDANCE	> 20k
CONNECTOR TYPE	5 pin terminal block for balanced or unbalanced operation
OUTPUT	
MAX. SOURCE LEVEL	+ 24dBu balanced +18dBu unbalanced
IMPEDANCE	< 50 Ohm
CONNECTOR TYPE	5 pin terminal block for balanced or unbalanced operation
CONTROL	
SERIAL	General Purpose 9 pin-D, each switchable RS-232 or RS-422 2 on 32 Series and 64 Series models, 1 on all others 9600, 38400, 115200 baud
PROTOCOLS	SVS host, simple Kramer, and select others
ETHERNET	10/100 Base-T, full duplex, RJ-45 connector
PROTOCOLS	ARP, ICMP, TCP/IP, Telnet, HTTP
WEB SERVER	For control
CONTROL PANELS	Supports SCP programmable control panels, XY & single bus control panels
GENERAL	
RACK UNIT SIZE/FRAME	
8x & 12x	3RU
16x, 8x16 Reverse Matrix	6RU
32x, 16x Reverse Matrix - Video Only	9RU
32x - Audio only	4RU
Up to 64 - Video only	20RU (4RU per channel)
Up to 64 - Audio only	5RU
DIMENSIONS	
8x & 12x	19"w x 5.25"h x 19"d
16x, 8x16 Reverse Matrix	19"w x 10.5"h x 19"d
32x, 16x32 Reverse Matrix	19"w x 15.75"h x 19"d
32x - Audio Only	19"w x 7"h x 19"d
	Mounts in standard 19" rack
	Depth measurements do not include front panel hardware or rear cabling
Up to 64 - Video only	9"w x 7"h x 20 3/8"d (per channel)
Up to 64 - Audio only	9"w x 8.75"h x 20 3/8"d
POWER	90VAC - >240 VAC 50/60HZ (<150 Watts) auto-detecting
REDUNDANT POWER SUPPLY	Optional in 8x16 Reverse Matrix and 16 Series, standard in 16x32 Reverse Matrix, 32 Series and 64 Series
STORAGE TEMPERATURE	-40° to +150° F
OPERATING TEMPERATURE	30° to 100° F ambient
HUMIDITY	10% to 90 % non-condensing
WARRANTY	7 Years

Software & Control

TyLinX Pro and TyLinX Pro Net Router Control Software

TyLinX Pro Router Control Software offers an intuitive, user-friendly interface for comprehensive routing system control with extensive options for customization. Our standard TyLinX Pro is free for download and provides unique profiles for each user with additional security features for the control system all based on a single host computer. Our TyLinX Pro Net software is a network-enabled version of TyLinX Pro, offering the same robust features with additional administrative and configuration capabilities, and allowing unlimited seats within your network.

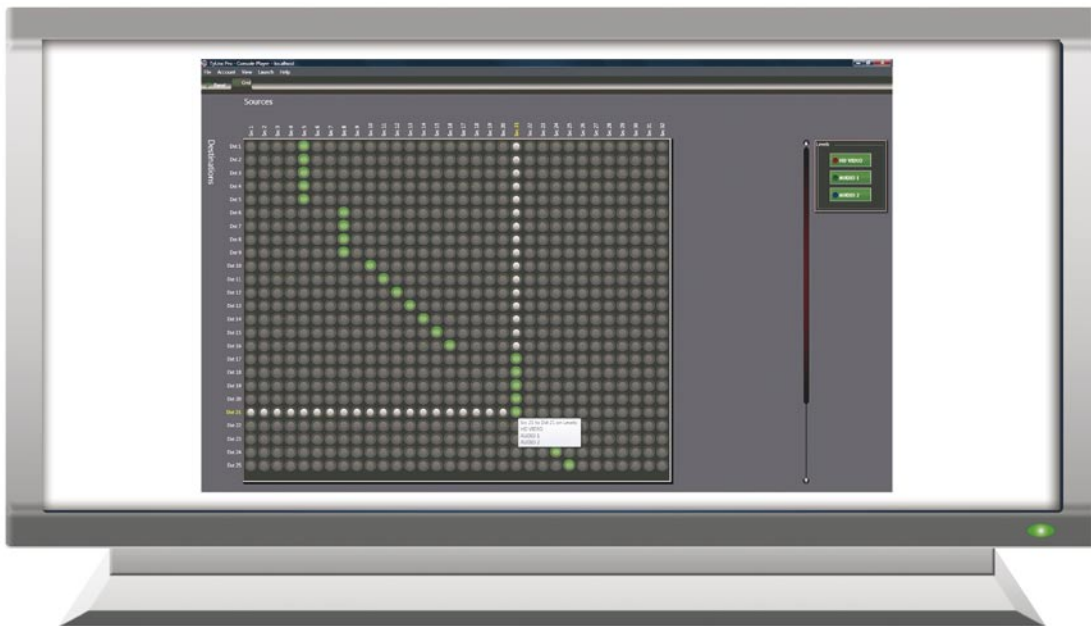
TyLinX Pro Features

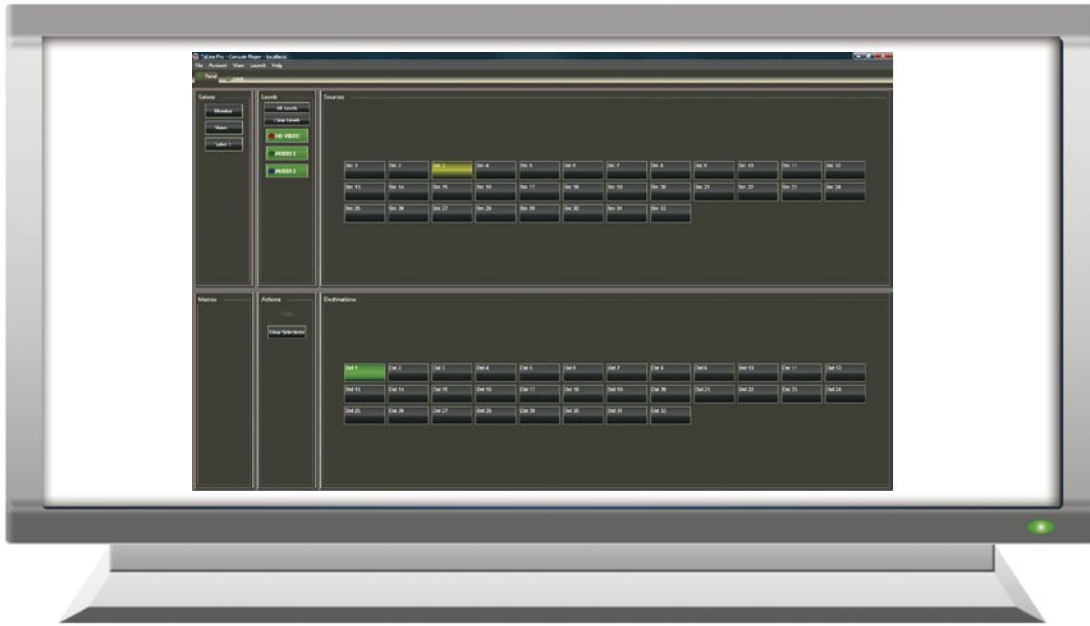
- Compatible with Windows® XP SP2, XP Pro x64 SP1, Windows Server® 2003
- Also compatible with Windows Vista® x86 & x64 editions
- Supports multiple routing switchers
- Automatically retrieves source and destination names from the router
- Records and stores routing commands for routine routing requirements
- Virtual Room Grouping allows each user to create custom views for their individual requirements
- Ethernet (IP) or RS-232 serial communication suppliers

Free download available at <http://tylinxpro.sierravideo.com>

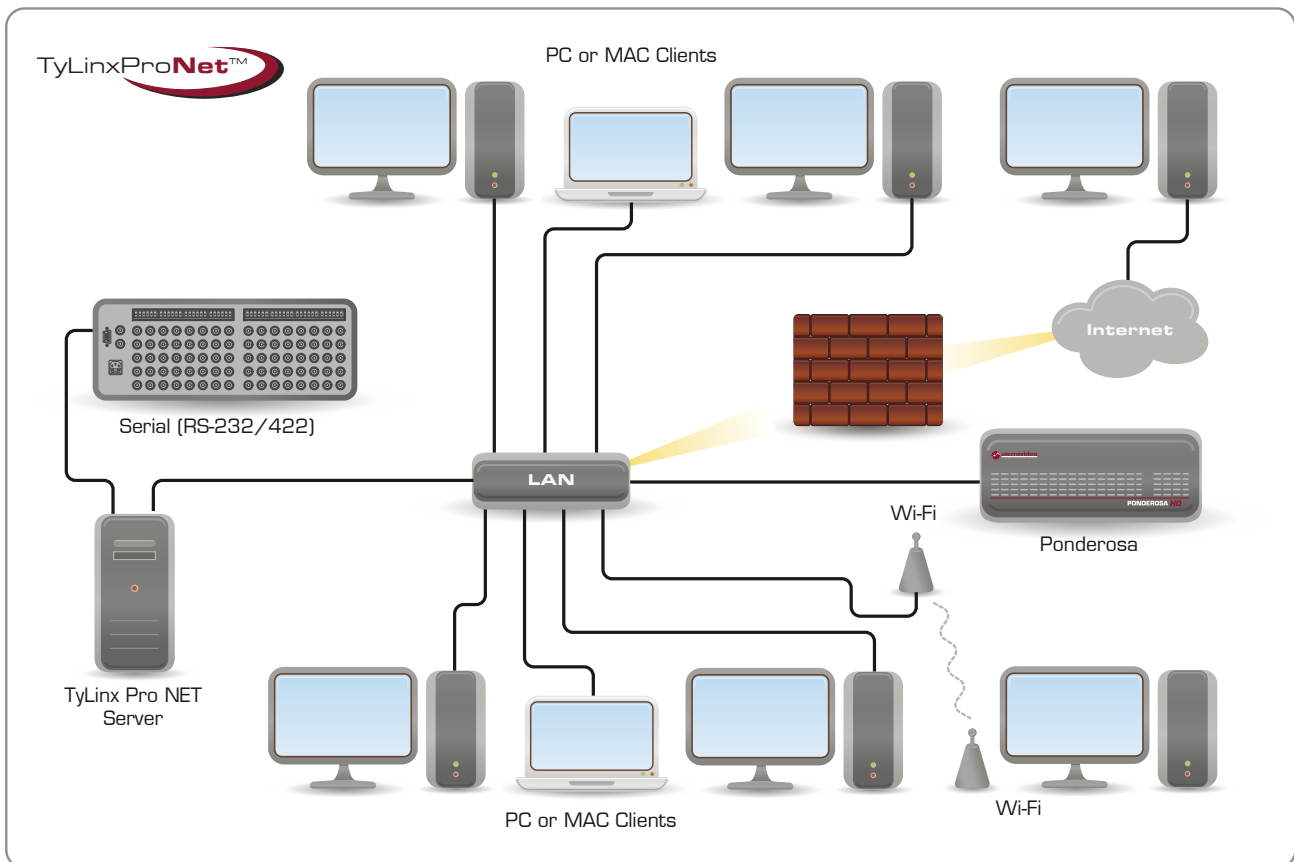
TyLinX Pro Net Features

- Network-enabled with unlimited seats
- Provides complete administrative, configuration, and control functions
- Shared/savable database for off-site data storage
- Windows® operating system & Mac OS® compatible
- Supports multiple routing switchers
- Provides all features of TyLinX Pro standard edition, including retrieval of source and destination names, recorded/stored routing commands, and Virtual Room Grouping
- Ethernet (IP) or RS-232 serial communication





With TyLinX Pro Net, an unlimited number of users on PCs or Macs can connect to and control the routing system's configuration, control panels, and user profiles, manage alarms or GPIs over the network.



Remote Control Panels

The SCP Series of programmable control panels features tremendous flexibility in external routing switcher control. The series has an onboard microprocessor which is combined with an effective 1²C-bus architecture to provide customers with a multitude of button configurations resulting in the most powerful user-definable line of control panels the industry has to offer. SCP Series panels are programmed using our own TyLinx Pro Router Control Software and they provide error-free serial communication with our routing switchers.

Sierra Video also offers a complete array of convenient and simple Single-Bus, Button Per Source and XY panel for all our product families.



SCW-116



SCW-116 side view



SCP-112



SCP-150



SCP-132



SCP-240



SCP-224

Sierra Video Control Panels and Accessories

MODEL	PART NUMBER	SIZE	DESCRIPTION
CONTROL PANELS			
SCP-20	804020	Desktop	Programmable Desktop Control Panel
SCP-112	804112	1RU	Basic Programmable Control Panel
SCP-132	804132	1RU	Programmable Push Button w/ Rotary Control Panel
SCP-150	804150	1RU	Programmable Push Button Control Panel
SCP-224	804224	2RU	Advanced Programmable Control Panel
SCP-240	804240	2RU	Multi-Bus/Multi-Level Programmable Control Panel
SCP-464	804464	4RU	Fully programmable 128 XY button panel
SCW-116	804116	Single gang	Wall Plate Remote Control Panel
SINGLE BUS	804047	1RU	16 x 1 Single Bus LED Remote Control Panel
XY	804048	1RU	16 x 16 XY LED Remote Control Panel
XY	804148	2RU	16 x 16 XY LED Remote Control Panel
SINGLE BUS	804014	1RU	32 x 1 Single Bus LED Remote Control Panel
SINGLE BUS	804348	2RU	32 x 1 Single Bus LED Remote Control Panel
XY	804015	2RU	32 x 32 XY LED Remote Control Panel
SINGLE BUS	804084	2RU	48 x 1 Single Bus LED Remote Control Panel
XY	804085	3RU	48 x 48 XY LED Remote Control Panel
SINGLE BUS	804715	2RU	64 x 1 Single Bus LED Remote Control Panel
CONTROL SOFTWARE			
TyLinx Pro	908340	N/A	TyLinx Pro Router Control Software
TyLinx Pro Net	908350	N/A	TyLinx Pro Net Network-Enabled Router Control Software
ACCESSORIES			
CABLES	AC20103	1m	Control Panel Cable, shielded pair
CABLES	AC20303	3m	Control Panel Cable, shielded pair
CABLES	AC21503	15m	Control Panel Cable, shielded pair
CONNECTORS	AC70001	N/A	Connector kit, 2 ea. mini-XLR (Switchcraft TA3F or equal)
CONNECTORS	AC70002	N/A	Connector kit, 10 ea. mini-XLR (Switchcraft TA3F or equal)
CONNECTORS	AC70003	N/A	Cable kit, 10 ea. mini-XLR connectors w/150m. shielded pair

Reliable Products, Expert Support



For over 25 years, Sierra Video has been assisting customers and providing solutions for almost any signal routing application imaginable. Our outstanding Customer Service and Technical Support teams are industry experts, skilled at answering your questions and optimizing your systems. Call direct during business hours and speak with a Technical Support Engineer, or take advantage of our After-Hours Technical Service: check our website for details. Technical manuals and online help are also available 24-hours a day at www.sierravideo.com.

Whether you need immediate on-site guidance or have repair questions, contact the best real-time customer service in the business. You can reach our Customer Service Department from 8 A.M. to 5 P.M. Pacific, Monday through Friday, or access 24-hour online support: www.sierravideo.com

Seven-Year Warranty



Routers are the core of your system - "glueware" that is often taken for granted. In today's demanding video environment, you need to know that the backbone of your system will keep on working. When choosing a routing switcher, it is important that you discuss your requirements with a knowledgeable sales staff and identify the company's ability to provide long-term support. Be sure to make the right choice! Sierra Video is proud to offer a Seven-Year Warranty on most of our products. We've offered this warranty for two decades and stand behind our quality products. We have been successful because we believe in providing quality products that don't come back, to customers who do.

Trade In – Trade Up™ Routing Switcher Exchange Program

With Sierra Video, you can maximize the impact of your investment by adding or exchanging systems as your needs grow. Most of our routing systems are designed to expand with you, using flexible plug-in modules or easy factory modifications. With these, you may choose from a variety of frames and modular combinations that meet your needs. However, if your system is a single frame all-in-one solution, simply send it back and we will either modify it by adding new modules or you can opt to trade it in for a new, larger system using our unique Trade In – Trade Up Routing Switcher Exchange Program. The Trade In – Trade Up Routing Switcher Exchange Program allows a generous credit for a customer's entire system when it is traded in for a larger Sierra Video routing switcher.

Let us know what your needs are and we will make every effort to accommodate you.

SIERRA VIDEO HEADQUARTERS

PO Box 2462 Grass Valley, CA, 95945, USA

Sales Outside the US:

Tel: (530) 478-1000
Fax: (530) 478-1105

Sales Inside the US:

Tel: (888) 886-8875
Fax: (530) 478-1700

Tech Support – Worldwide:

Tel: (530) 478-1000
After Hours: (530) 888-3195
E-mail: info@sierravideo.com
Online: www.sierravideo.com

KRAMER ELECTRONICS, Ltd.

3 Am VeOlamo St.
Jerusalem, Israel, 95463
Tel: + 972 2 654 4000
Fax: + 972 2 653 5369
E-mail: info@kramerei.com
Web: www.kramerelectronics.com

**KRAMER ELECTRONICS USA, INC.
HEADQUARTERS**

96 Route 173 West Suite 1
Hampton, NJ 08827
Tel: (908) 735 0018
(888) 275 6311
Fax: (908) 735 0515

Tech Support after 6pm EST:
(888) 275-6311

E-mail: info@kramerus.com
Web: www.kramermatrix.com

KRAMER ELECTRONICS EUROPE SA

Rue du Bosquet 12 B
B-1400 Nivelles, Belgium
Tel: + 32 67 49 34 10
Fax: + 32 67 49 34 29
E-mail: info.kramee@skynet.be

KRAMER ELECTRONICS UK, Ltd.

2 Premus, Coldharbour Way,
Aylesbury, Bucks. HP19 8AP
Tel: + 44 1296 330011
Fax: + 44 1296 330055
E-mail: info@kramerelectronics.co.uk
Web: www.kramerelectronics.co.uk

KRAMER ELECTRONICS FRANCE S.A.R.L.

ZI de la Bonde - Parc de la Roseraie - Bat F
15 rue du Buisson aux Fraises,
91300 Massy
Tel: + 33 (0)1 69 75 29 80
Fax: + 33 (0)1 60 11 76 94
E-mail: info@kramerfrance.com
Web: www.kramerfrance.com

KRAMER ELECTRONICS ITALIA S.R.L.

Via Cesare Cantù, 25
20092 Cinisello Balsamo (MI)
Tel: + 39 02 66594771
Fax: + 39 02 61296221
Cell: + 39 3387999739
E-mail: info@krameritalia.com
Web: www.krameritalia.com

KRAMER ELECTRONICS ESPAÑA S.L.

Av. De Aragón 334
28022 Madrid
Tel: + 34 917478410
Fax: + 34 917473409
E-mail: info@kramerspain.com
Web: www.kramerspain.com

KRAMER GERMANY GMBH

An Fürthenrode 59
52511 Geilenkirchen
Tel: + 49 (0) 2451 91161 0
Fax: + 49 (0) 2451 91161 10
E-mail: info@kramergermany.com
Web: www.kramergermany.com

KRAMER ELECTRONICS SWEDEN AB

Energigatan 4,
Kungsbacka 43437
Tel: + 46 300 43 18 10
E-mail: info@kramersweden.com
Web: www.kramersweden.com

KRAMER ELECTRONICS POLSKA SP. Z O.O.

ul.Okrzei 1 A
03 -715 Warszawa, Poland
Tel: + 48 22 333 80 31
Fax: + 48 22 333 80 30
E-mail: info@kramerpoland.com
Web: www.kramerpoland.com

KRAMER ELECTRONICS CANADA

3465 Mainway, Unit #3
Burlington, Ontario
L7M 1A9
Tel: 1-866-726-9921
(905) 592-9739
Fax: (905) 592-9762
E-mail: info@kramercanada.ca
Web: www.kramercanada.ca

KRAMER ELECTRONICS RUSSIA

Moscow, Russia
Tel/Fax: +7 495 7800302
E-mail: info@kramer.ru
Web: www.kramer.ru

KRAMER ELECTRONICS MEXICO

Heriberto Frías # 918
Col. Del Valle, C.P. 03100
Ciudad de México
Tel: + 52 (55) 5523-0604
+ 52 (55) 5523-0629
Fax: + 52 (55) 5543-5945
E-mail: rsanchez@kramermexico.com
Web: www.kramermexico.com

KRAMER LATIN AMERICA

Tel: + 1-305-600-4726
E-mail: info@kramerlatinamerica.com
Web: www.kramerlatinamerica.com

**KRAMER DO BRASIL COMÉRCIO
DE ELETRÔNICOS LTDA**

Av. Lacerda Franco, 1550, Cambuci
São Paulo, SP, 01356-001, Brasil
Tel: + 55-11-3926-9435
E-mail: info@kramerbrasil.com
Web: www.kramerbrasil.com

KRAMER ELECTRONICS ARGENTINA

Tel: + 54 (11) 4554 4621
Cel: + 54 (911) 6398 7576
Local: 011 15 6398 7576
E-mail: info@kramerargentina.com
Web: www.kramerargentina.com

KRAMER ELECTRONICS COLOMBIA

Comcel: (+57) 310 245 8036
Bogota: (+57-1) 613 9109
E-mail: info@kramercolombia.com
Web: www.kramercolombia.com

KRAMER ASIA PACIFIC Pte, Ltd.

69 Ubi Crescent,
#03-06/07 CES Building
Singapore 408561
Tel: + 65 6274 4474
Fax: + 65 6274 4414
E-mail: kap@kramerasia.com
Web: www.kramerasia.com

KRAMER ELECTRONICS AUSTRALIA Pty, Ltd.

Unit 4/42 Clinker St.
QCL Industrial Park DARRA QLD 4078,
Brisbane, Australia
Tel: + 61 7 37 15 6200
Fax: + 61 7 37 15 6100
E-mail: sales@krameraustralia.com.au
Web: www.krameraustralia.com.au

KRAMER ELECTRONICS CHINA

1204, Kuenyang International
Business Plaza
798 Zhaajiang Road,
Shanghai 200030, China
Tel: + 86 21 64453139,
+ 86 21 64453136
Fax: + 86 21 64455934
E-mail: info@kramerschina.com
Web: www.kramerschina.com

KRAMER ELECTRONICS KOREA

#201 HyeopSung Bldg
309-148, Seongsu-dong 2Ga,
Seongdong-gu
Seoul, Korea
Tel: + 82 2 467 4747
Fax: + 82 2 467 4750
E-mail: info@kramerkorea.com
Web: www.kramerkorea.com

KRAMER ELECTRONICS INDIA PVT. LTD.

Unit 205, Saleh Centre;
18/10, Cunningham Road;
Bangalore-560052.
Karantaka, India.
Tel: + 91 80 4148 5388
Fax: + 91 80 4148 5387
E-mail: sales@kramerindia.com
Web: www.kramerindia.com

KRAMER ELECTRONICS JAPAN

Koike Building 2F
1-1-17 Kita-Shinagawa
Shinagawa-ku, Tokyo 140-0001, Japan
Tel: +81 3 3471 6149
Cell: +81 3 3405 6149
Fax: +81 3 3471 6149
E-mail: S.nakanishi@kramerjapan.com
Web: www.kramerjapan.com



(c) 2009 Sierra Video Systems. All rights reserved. Reproduction in whole or in part without written permission is prohibited. Matrix Mapping, Qwik Adjust Knob, Sierra Pro XL, Trade In - Trade Up, TyLinX Pro, TyLinX Pro Net and Video Follow Sync are trademarks of Sierra Video Systems.