



PRODUKTINFORMATION

PRODUCT INFORMATION

INFORMATIONS DE PRODUIT

MPR 210

Kondensatormikrofon

Condenser Microphone

Microphone à condensateur

1. Safety Information	10
2. Application	10
3. Connection	10
4. Microphone Positioning	11
5. Installation	11
6. Maintenance	12
7. Service	12
8. Version	12
9. Technical Specifications	12
10. Wiring Diagram	13

Thank you for selecting the MPR 210 condenser microphone. Please take some time to read carefully through this information before using the product.

1. Safety Information

- Protect the microphone from moisture and sudden impacts. You could either injure yourself or others or damage the microphone.
- Do not blow into the microphone, you could damage the transformer. It is preferable to carry out a speech trial.
- When using wired microphones always ensure that the microphone cable is laid so that it does not present a trip hazard.

2. Applications

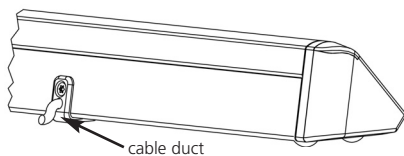
The MPR 210 is a modern desktop microphone which is ideal for discussions, tele/video conferencing and announcements. The Revoluto technology with integrated microphone capsules provides a so-called corridor characteristic which ensures a wide range of good voice quality. Within this range the speaker can move freely, i.e. he/she can stand up or sit down, move his/her head and move towards or away from the microphone.

3. Connection

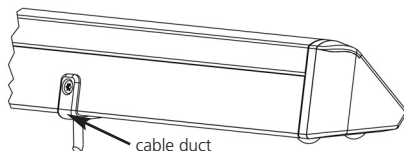
The MPR 210 provides a fixed connecting cable with a 3-pin male XLR connector. It can be connected to any microphone input with phantom power supply (24 - 52 V). For more information, please refer to the wiring diagram.

The connecting cable can be guided to the rear or to the bottom. For this you can remove the two small screws, turn the cable duct appropriately and tighten the screws. The standard cable exit is on the rear.

Cable guided to the rear.



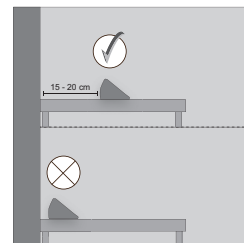
Cable guided to the bottom.



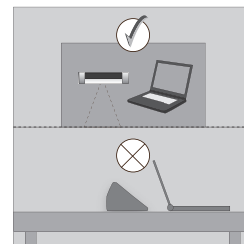
4. Microphone Positioning

Each speaker should have his or her own microphone.

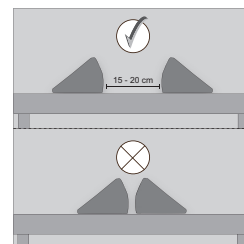
The MPR 210 must not directly be placed with its back in front of a wall. The minimum distance to the wall should be 15 to 20 cm. An acoustic shadow due to obstructions, such as books, newspapers or conference papers, compromises performance greatly.



When notebooks are being used, it is also necessary to consider the microphones. Notebooks should always be positioned to the side of the microphones. Otherwise, when opened, the LCD screen would obstruct the sound. This also applies to free-standing monitors. Sufficient distance is the key to the directional effect and good feedback suppression. Moreover, notebooks often have fans at the back. The noise of the fan would then be fully picked up by the microphone.



Two MPR 210 should not be directly placed back to back, because the acoustical corridor effect does not work in this case. As shown in the previous example the minimum distance should be 15 to 20 cm.



For more information about application examples, please refer to the beyerdynamic "Revoluto Design Guide".

5. Installation

For permanent installation on a table, the MPR 210 provides screw sockets on the left and right hand side at the bottom of the housing.

Warning:

We recommend that the threaded sleeve is screwed into the microphone approx. 1/5" (5 mm). Refer also to the drilling template.

6. Maintenance

Use a soft, damp cloth for cleaning the MPR 210 microphone. If necessary, you can use a gentle cleansing agent (such as washing-up liquid). Make sure not to allow any water to enter the transducer element and never use any solvent cleansers.

7. Service

Servicing must be carried out by qualified service personnel only. Dismantling the microphone yourself will invalidate the guarantee.

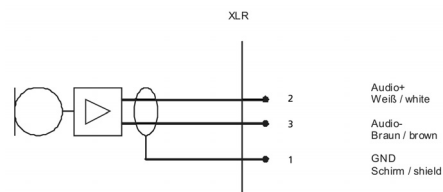
8. Version

MPR 210 Desktop microphone with Revoluto
Microphone Array technology,
corridor characteristic Order # 488.410

9. Technical Specifications

Transducer type.	Condenser (back electret)
Frequency response.	130 - 17,000 Hz
Microphone	Microphone Array, patented
Polar pattern.	Corridor
Optimal distance when speaking.	60 - 80 cm
Open circuit voltage at 1 kHz	approx. 200 mV/Pa
Output level depending on the selected position	
Hi	200 mV/Pa
Mid.	60 mV/Pa (-10 dB)
Lo.	20 mV/Pa (-20 dB)
Nominal impedance	200 Ω
Load impedance	> 1 k Ω
Max. SPL at f = 1 kHz, k < 1%	112 dB
Signal-to-noise ratio rel. to 1 Pa	60 dB
Voltage supply	Phantom powering 48 V \pm 4 V to 6.8 k Ω supply impedance 24 V \pm 4 V to 1.2 k Ω supply impedance
Power consumption	3 mA
T.H.D.	< 0.1%
Connection.	3-pin XLR, male
Temperature range	-10 °C to +40 °C
Dimensions (L x H x D)	300 x 40 x 45.5 mm
Weight (without cable)	230 g

10. Wiring Diagram



beyerdynamic))))

beyerdynamic GmbH & Co. KG
Theresienstr. 8 | 74072 Heilbronn – Germany
Tel. +49 (0) 7131 / 617 - 0 | Fax +49 (0) 7131 / 617 - 224
info@beyerdynamic.de | www.beyerdynamic.de

Weitere Vertriebspartner weltweit finden Sie unter www.beyerdynamic.de
For further distributors worldwide, please go to www.beyerdynamic.com



DEZ/PI/MRR 2101(10.09)/611.483/Hoh. • Änderungen und Irrtümer vorbehalten • Subject to change without notice • Sous réserve de modifications • Printed in Germany