



Application Solutions

C12BB3

3.0 CUBIC FOOT (NOMINAL, EXTERNAL, 2.8 CUBIC FOOT INTERNAL VOLUME) RECTANGULAR, RECESSED ENCLOSURE FOR 12-INCH CEILING LOUDSPEAKER SYSTEMS

DESCRIPTION

The Community C12BB3 professional steel ceiling loudspeaker backbox has been engineered to provide optimal performance with Community's CLOUD Series 12-inch coaxial loudspeakers and 12-inch subwoofers. To provide unmatched low frequency performance, 21 L-shaped steel ribs are welded internally to rigidly brace the enclosure. A system of acoustical damping including a heavy mastic coating sprayed onto the interior steel surfaces and fibrous poly padding are provided to quiet undesirable metallic resonances like those found in other backboxes.

Community's CLOUD1266, CLOUD1299 and CLOUD12SUB ceiling systems are shipped mounted to heavy gauge baffle plates. These plates are designed with integrated parting and gaskets to swiftly mate to the drywall/ceiling tile extension included on the C12BB3.

Each enclosure is furnished with two conduit knockouts on each of four sides. These holes will accommodate $\frac{1}{2}$ " or $\frac{3}{4}$ " fittings for common conduit or armored cable fittings.

Optional steel channel rail pairs are available in 23.75", 30" and 47.75" lengths (part nos. RAIL24-PR, RAIL30-PR and RAIL48-PR respectively) which fasten to the slotted tabs welded on parallel sides of the C12BB3 to evenly distribute loads to the ceiling structure. An attractive square grille is optionally available factory-finished in low gloss white paint (part no. C12SQGRL). This paintable grille provides an appealing appearance to match any architectural theme.

Both the welded slotted tabs or the welded $\frac{1}{4}$ -20 suspension points may be used in combination for suspension or seismic anchoring. The optional Community eyebolt accessory kit (part no. 1/4EYBLTKIT) allows a C12BB3 to be suspended by PE-approved rigging techniques.



Shown: C12BB3 backbox with C12SQGRL grille. The grille is sold separately.

FEATURES

- Best-in-class construction and acoustical performance.
- Welded steel enclosure (1.2 mm).
- Industry standard form factor.
- 21 welded, unitized steel rib structures for maximum enclosure rigidity.
- Two different-sized conduit knockouts are provided on each of four sides of the enclosure [$\frac{1}{2}$ " (13mm) and $\frac{3}{4}$ " (19mm) nominal].
- Welded $\frac{1}{4}$ -20 nuts on the rear panel accommodate Community's optional 1/4EYBLTKIT accessory (kit of four forged eyebolts, 1" (25mm) ID, black) for suspended installation.
- Four slotted tabs accommodate mounting Community's optional channel rail accessories for recessed ceiling enclosure support. 23.75", 30" and 47.75" channel rails (part nos. RAIL24-PR, RAIL30-PR and RAIL48-PR respectively), sold in pairs, are available.
- Enclosures are treated with a heavy acoustic mastic coating to minimize steel resonance.
- Each enclosure is padded with 1" (25mm) premium poly acoustic lining to minimize internal reflections.
- Low gloss black paint finish.
- Designed for use with Community's CLOUD1266, CLOUD1299 and CLOUD12SUB 12-inch ceiling systems.

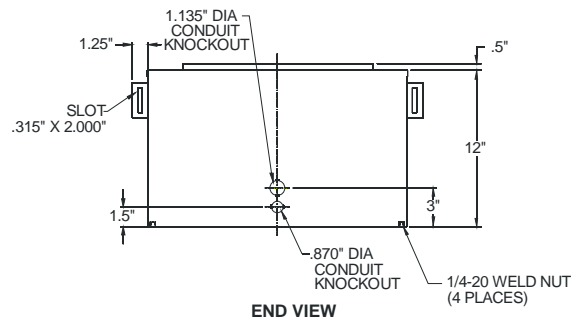
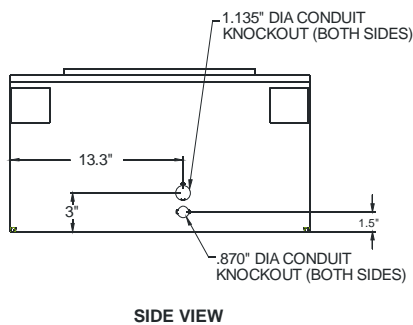
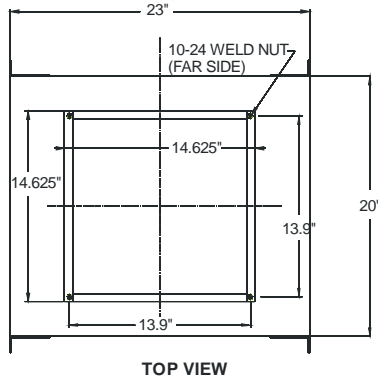


C12BB3

True to Specification

3.0 CUBIC FOOT (NOMINAL, EXTERNAL, 2.8 CUBIC FOOT INTERNAL VOLUME) RECTANGULAR, RECESSED ENCLOSURE FOR 12-INCH CEILING LOUDSPEAKER SYSTEMS

C12BB3 DIMENSIONS



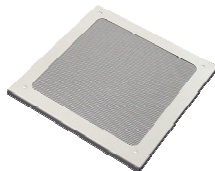
LOUDSPEAKERS AND ACCESSORIES FOR C12BB3



CLOUD12 full-range ceiling loudspeaker



CLOUD12SUB 12-inch subwoofer system



C12SQGRL paintable square white grille



Pairs of channel rails available in 23.75", 30" and 47.75" lengths



1/4EYBLTKIT kit of four 1/4"-20 forged eyebolts

ARCHITECTS AND ENGINEERS SPECIFICATIONS:

The steel loudspeaker enclosure shall be the Community Model C12BB3 backbox or approved equivalent. The enclosure shall be constructed from welded 1.2mm cold-rolled steel, having 21 welded L-shaped steel braces, internal acoustic mastic conformal coating, poly acoustic batting lining, four of each 1/2" and 3/4" fittings for common conduit or armored cable fittings. The dimensions of the backbox shall be 12.75" (317.5 mm) H x 23" (584.2 mm) W x 20" (508 mm) D and weigh 40 lbs (18.1 kg).

Community strives to improve its products on a continual basis. Specifications are therefore subject to change without notice.