



Epson PowerLite® 460

MULTIMEDIA PROJECTOR



Amazing quality. Ultra-short-throw projection.

Designed with education in mind, the Epson PowerLite 460 offers XGA resolution and ultra-short-throw projection to easily engage any audience, without taking up valuable classroom space, or allowing shadow interference. Ideal for wall-mount installations and use with interactive whiteboards, the PowerLite 460 also offers powerful communication tools, including a built-in 10 W speaker, closed captioning decoder and the ability to deliver content over the network. With versatile connectivity features and optional wireless capabilities, this high-performance projector offers the ultimate choice in smart presentation solutions.

Brilliant quality and detail — native XGA resolution

Super bright and colorful — 3000 lumens color light output, 3000 lumens white light output¹



Epson PowerLite® 460

MULTIMEDIA PROJECTOR

The best-selling projectors in the world

Epson understands education and has a solution no matter what your teaching scenario. Built with image quality and reliability in mind, Epson projectors enhance communication and inspire collaboration, while offering a low total cost of ownership. From long-throw projectors designed for traditional educational settings to ultra-short-throw and all-in-one solutions built for progressive classrooms, Epson has the model made for you.



3LCD technology — for quality and color that's beyond amazing

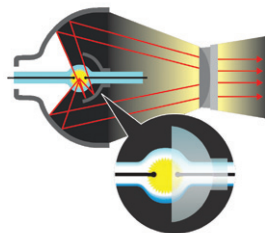
Innovative technology with proven reliability

- 3 chips for full-time, vibrant color
- 25% less electricity required per lumen of brightness when compared to 1-chip DLP projectors²
- Road-tested reliability from a company with over 20 years of experience

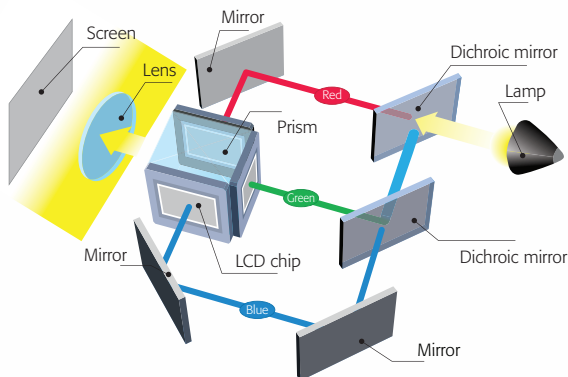


Energy-efficient E-TORL® lamp, exclusively from Epson

- Delivers more lumens per watt and lasts up to 3500 hours³
- Minimizes both light diffraction and light leakage, providing you the ultimate in lamp longevity



▲ E-TORL lamp



Amazing light output

- 3000 lumens color light output and 3000 lumens white light output¹
- High color light output for bright, balanced, colorful images
- Light output and performance to meet your expectations
- White light output that's measured using ISO 21118 (a more rigid standard than the outdated ANSI lumens rating used by competitive products)



High color light output



Low color light output

Actual photographs of images taken from two competing projectors run in default mode. Price, resolution and brightness (white light output) are the same for both projectors.



Eco features

- Designed to be recycled⁴
- Energy-efficient E-TORL lamp
- RoHS compliant
- Epson America, Inc. is a SmartWaySM Transport Partner⁵

Better Products for a Better Future™

For more information on Epson's environmental programs, go to eco.epson.com

You asked, we delivered

Included wall mount

- Makes installation and short-throw operation easier than ever



Mount included

Value-added features

- Content delivered over the network, via RJ-45, with optional wireless capabilities
- Built-in 10 W speaker and microphone input

USB Plug 'n Play instant setup

- No more computer function keys or bulky VGA cables
- Just plug in a standard USB cable and instantly project from your PC or Mac®
- Instantly view your images on both the screen and your PC; one standard USB cable does it all!

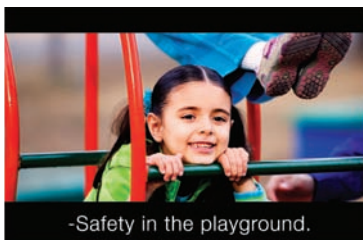


USB Plug 'n Play
instant display

PC-free slideshows

Built-in closed captioning

- Essential for education — helps meet ADA508 requirements for students with hearing impairments
- Helps save money — no need to pay for an additional decoder and its installation
- Effective and easy to use — easily enabled or disabled through the projector remote or menu



-Safety in the playground.

PowerLite 460 features

- **Ultra-short throw distance** — ideal for wall mount installations and use with interactive whiteboards
- **Brilliant quality and detail** — native XGA resolution
- **Super bright and colorful** — 3000 lumens color light output, 3000 lumens white light output¹
- **Rich, vibrant color and reliable performance** — 3LCD, 3-chip technology
- **Versatile connectivity options** — RJ-45 LAN connectivity for remote presentations and control; optional wireless capabilities for even greater flexibility
- **Value-added communication features** — built-in 10 W speaker, microphone input and built-in closed captioning decoder
- **USB Plug 'n Play instant setup** — instantly projects images from a PC or Mac via a USB connection
- **PC-free slideshows** — project photos (JPEG) via a USB thumb drive
- **Energy-efficient E-TORL lamp** — up to 3500-hour lamp life³

Ultra-short throw projection

With its ultra-short throw capabilities and included wall mount, the PowerLite 460 can be easily mounted close to any wall, which means a less expensive installation and less likelihood of shadows. It's ideal for use with interactive whiteboards. Use the included wall mount and install the PowerLite 460 in any size room. You'll still get a large, brilliant image that's sure to engage any audience. In fact, with the PowerLite 460's short-throw capabilities, you can project an 80" image from just 24" away.

Long throw

Ultra-short throw



Significant reductions in shadow interference

Epson PowerLite® 460

MULTIMEDIA PROJECTOR

Product Name	Product Code	UPC
PowerLite 460	V11H343020	0 10343 87564 7
Genuine Epson Lamp	V13H010L57	0 10343 87574 6
Air Filter Set	V13H134A27	0 10343 87575 3

Specifications

Projection System

Epson 3LCD, 3-chip optical engine

Projection Method

Front/rear/wall/ceiling mount

Driving Method

Epson Poly-silicon TFT Active Matrix

Pixel Number

786,432 dots (1024 x 768) x 3

White Light Output¹

3000 lumens (ISO 21118 Standard)

Color Light Output¹

3000 lumens

Aspect Ratio

4:3

Native Resolution

1024 x 768 (XGA)

Resize

640 x 480 (VGA), 800 x 600 (SVGA),
1280 x 800 (WXGA), 1152 x 864 (SXGA1),
1280 x 960 (SXGA2), 1280 x 1024 (SXGA3),
1280 x 768 (WXGA60-1), 1360 x 768 (WXGA60-2),
1440 x 900 (WXGA+), 1400 x 1050 (SXGA+),
1600 x 1200 (UXGA)

Lamp Type

E-TORL 230 W UHE

Lamp Life³

Up to 3500 hours (ECO Mode)
Up to 2500 hours (Normal Mode)

Throw Ratio Range

(4:3) 0.37:1 – 0.50:1
(16:10) 0.37:1 – 0.50:1
(16:9) 0.37:1 – 0.50:1

Size (projected distance)

4:3 63" – 102" (18" – 30")
16:10 60" – 96" (18" – 30")
16:9 60" – 93" (18" – 30")

Keystone Correction Manual

Vertical: ± 50 degrees

Plug 'n Play

Projector is Mac® compatible
DVI VGA
USB Plug 'n Play for Windows® 2000 or later

Contrast Ratio

Up to 2000:1

Color Reproduction

16.77 million colors

Projection Lens

Type

Manual focus

F-number

1.80

Focal Length

4.68 mm

Zoom Ratio

Digital zoom 1.0 – 1.35x

Other

Display Performance

NTSC: 480 lines

PAL: 560 lines

(Depends on observation of the multi-burst pattern)

Input Signal

NTSC/NTSC4.43/PAL/M-PAL/N-PAL/
PAL60/SECAM

Interfaces

Computer/component video:

D-sub 15 pin x 2

S-video: Mini DIN x 1

Composite video: RCA x 1

Audio in x 3 (RCA (L&R) x 1, mini stereo x 2)

Variable audio out: mini stereo x 1

LAN networking: RJ-45 x 1

Serial: RS-232c x 1

Monitor out: D-sub 15 pin x 1

USB Type B x 1 (USB display, mouse,
keyboard interface)

USB Type A x 1 (USB memory device)

Wireless port 802.11 a/b/g (optional
module sold separately)

Speaker

10 W monaural

Operating Temperature

41 ° to 95 °F (5 ° to 35 °C)

Power Supply Voltage

100 – 240 V ±10%, 50/60 Hz

Power Consumption

363 W

Network on: 10 W standby,

Network off: 0.3 W standby

Direct power on/off

Instant off

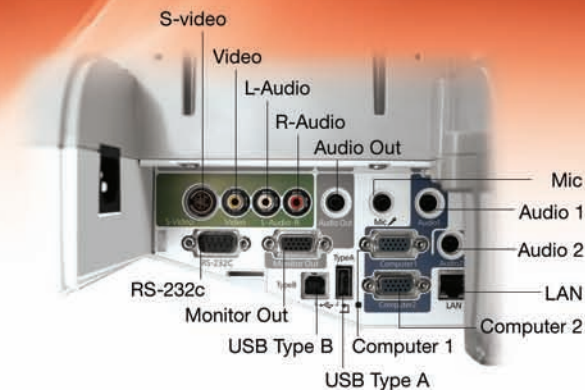
Fan Noise

35 dB (Normal Mode)

28 dB (ECO Mode)

Security

Kensington®-style lock provision,
security anchor bar,
password protection function



Dimensions (W x D x H)

Max: 19.0" x 14.52" x 6.1"

Min: 19.0" x 14.52" x 4.5"

Weight: 12.6 lb (without slide plate)
13.8 lb (with slide plate)

Remote Control

Features

Power, source search, computer, video, USB, LAN,
A/V mute, freeze, user, auto, aspect, color mode,
page up and down, e-zoom, pointer, help, volume,
menu, esc, enter, mouse functions

Operating Angle

-75 to +15 degrees

Right/left: ± 55 degrees

Operating Distance

19.7 ft (6 m)

Support — The Epson ConnectionSM

Pre-sales support

U.S. and Canada

800-463-7766

Internet website

www.epson.com

Service Programs

Two-year projector limited warranty,
Epson Road Service program,
Epson PrivateLine® dedicated toll-free
support and 90-day limited lamp warranty

What's In The Box

Power cord, computer cable (VGA),
projector remote control, batteries, user
manual CD, EMP Monitor CD, Quick Setup
Sheet, PrivateLine support card, mount
and password protection sticker

Accessory Part Numbers

Wireless LAN module (ELPAP03)	V12H306P11
Quick Wireless Connection USB Key (ELPAP05)	V12H005M05
Epson DC-10s document camera (ELPDC06)	ELPDC10S
Epson DC-06 document camera (ELPDC06)	V12H321001
Presentation remote control	V12H007T0B
Distribution amplifier	ELPDA01
Component-to-VGA video cable	ELPKC19
S-video cable	ELPSV01
Kensington security lock	ELPSL01

¹Light output varies depending on modes (color and white light output). White light output measured using ISO 21118 standard.

²Data source: ProjectorCentral.com, Jan. 2009. Average of 796 shipping models, for which manufacturers provided lumens and total power data, all resolutions and brightness levels.

³Lamp life will vary depending upon mode selected, environmental conditions and usage. Lamp brightness decreases over time.

⁴See our website for convenient and reasonable recycling options at www.epson.com/recycle

⁵SmartWay is an innovative partnership of the U.S. Environmental Protection Agency that reduces greenhouse gases and other air pollutants and improves fuel efficiency.

Epson America, Inc.

3840 Kilroy Airport Way, Long Beach, CA 90806

Epson Canada, Ltd.

3771 Victoria Park Avenue, Toronto, Ontario M1W 3Z5

www.epson.com

www.epson.ca