



## PowerLite® 4100

MULTIMEDIA PROJECTOR



### Brilliant quality. Easy installation features.

Engineered for easy installation, the PowerLite 4100 offers a flexible solution for any classroom or boardroom. Featuring 4500 lumens of color and white light output<sup>1</sup>, plus XGA resolution, this powerful performer ensures amazing presentations and provides convenient maintenance features. With one-touch filter removal and easy side lamp access, the PowerLite 4100 offers added peace of mind. It even includes a closed captioning decoder, so there are no added costs to accommodate those with hearing impairments. The PowerLite 4100 is ideal for both executive boardrooms and educational institutions, with value, power and performance for all your presentation needs.

**Bright performance; brilliant detail** — 4500 lumens color and white light output<sup>1</sup>, XGA resolution

**Network-ready** — RJ-45 LAN connection with monitor and control capabilities

**Easy installation** — horizontal/vertical lens shift, centered lens design, 1.8x zoom lens and Quick Corner® allow for flexible room placement and easy image adjustments at setup



# PowerLite® 4100

## MULTIMEDIA PROJECTOR

### The best-selling projectors in the world.

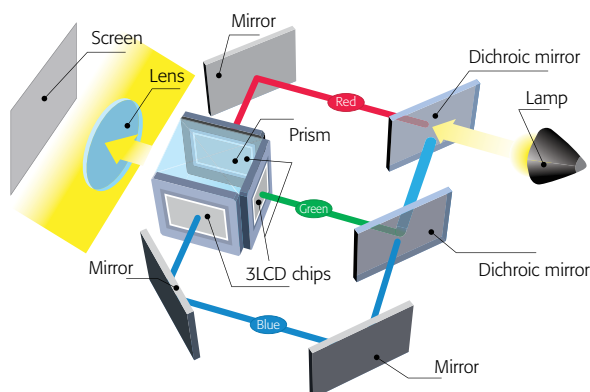
Epson understands business and education and has a solution no matter what your situation. Built with image quality and reliability in mind, Epson projectors enhance communication and inspire collaboration, while offering a low total cost of ownership. From long-throw projectors to ultra-short-throw and all-in-one solutions, Epson has the model made for you.



### Brilliant image quality

#### 3LCD technology — for quality and color that's beyond amazing

- 3 chips for full-time, vibrant color
- 25% less electricity required per lumen of brightness when compared to 1-chip DLP projectors<sup>2</sup>
- Over 20 years of road-tested reliability built into every projector



#### Amazing color light output

Rich color and detail are critical for presentations — that's why it's important to understand that color light output is an essential ingredient in achieving optimum performance. The PowerLite 4100 delivers 4500 lumens of color light output and 4500 lumens of white light output<sup>1</sup> for bright, vibrant colorful images.



#### C<sup>2</sup>Fine™ technology delivers a higher contrast ratio

C<sup>2</sup>Fine offers smooth, uniform images with exceptional contrast for better image quality. Based on this new phase-compensation technology, light leakage is eliminated, and, when combined with the auto iris, this technology allows for contrast ratios of up to 1000:1.



▲ With C<sup>2</sup>Fine



▲ Without C<sup>2</sup>Fine

#### Advanced sharpness

Another feature Epson has transferred over from its industry leading home cinema projectors — advanced sharpness for video. Depending on the content, users can adjust any of the following attributes of the image depending on the content: thin line enhancement, thick line enhancement, vertical line enhancement or horizontal line enhancement.

### Better Products for a Better Future™

For more information on Epson's environmental programs, go to [eco.epson.com](http://eco.epson.com)

#### Eco Features

- Energy-efficient 3LCD light engine
- Designed to be recycled<sup>3</sup>
- Epson America, Inc. is a SmartWay<sup>SM</sup> Transport Partner<sup>4</sup>



# Easy and flexible installations

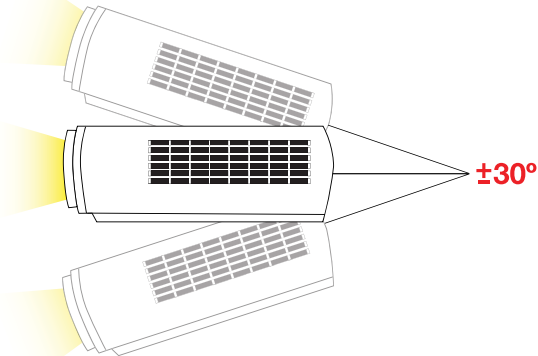
## Centered lens design

The PowerLite 4100 makes installation easy to plan with lens-to-screen alignment. Installers can position the ceiling mount, screen and projector independently of one another, knowing that the center of the screen will align with the lens at the center of the projector.



## Off-axis, flexible installation

The PowerLite 4100 also features a  $\pm 30$ -degree tilt operation for off-axis positioning flexibility. As a result, this projector can be used for a wide range of applications, such as projecting on angled surfaces. Epson technology keeps the projector running without compromising performance or causing overheating.

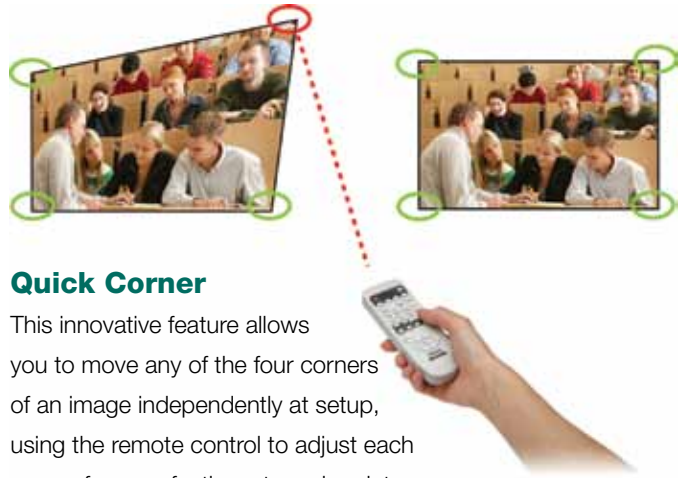


▲ Off-axis, flexible installation



## Epson lens shift technology

In addition to added reliability and amazing color performance, Epson's industry-leading 3LCD technology enables these projectors to achieve a wide range of lens shift capabilities allowing you to install around obstacles. This lens shift technology enables an incredible range of  $\pm 50$  percent on the vertical axis and  $\pm 10$  percent on the horizontal axis.



## Quick Corner

This innovative feature allows you to move any of the four corners of an image independently at setup, using the remote control to adjust each corner for a perfectly rectangular picture.

## Keystone correction

Adjusts up to  $\pm 40$  degrees vertically and  $\pm 20$  degrees horizontally to easily achieve a perfect square image.

# Convenient control, monitoring and communication

## Monitor and control

- **Easy Management® software included** — remotely access, monitor and control Epson projectors over the network; includes e-mail notifications
- **Network-ready for monitor and control** — RJ-45 LAN connection

## Web-based remote control

This utility allows users to control one projector at a time through the LAN network. Projector control is used in the room in which the projector is located, taking the place of the remote control for some basic commands, including power on and off, volume control, source changes and more.



# Low cost of ownership

## Protect your investment — long-life electrostatic air filter

This innovative filter was designed to protect the optical engine, lamp and electronics from small dust particles that can enter any projector. It has a recommended 3000-hour filter cleaning schedule<sup>6</sup> and can capture particles as small as three microns, due in part to its pleated, expanded design.

With one air intake and one exhaust path, the PowerLite 4100 offers efficient airflow systems for optimum cooling of key components and a reduction in dust-related problems.



## Long-life lamp that's easy to replace

This high-efficiency lamp lasts up to 2000 hours in Normal Mode and up to 3000 hours in ECO Mode.<sup>7</sup> It can be replaced quickly and easily, without having to uninstall the projector from the ceiling.



## Full-featured performance

### DICOM Simulation Mode

DICOM (Digital Imaging and Communication in Medicine) is a standard for handling, storing, printing and transmitting medical imaging information. The projector's DICOM Simulation Mode enables users to reproduce images with an advanced gray scale level that simulates DICOM Part 14. This mode is ideal for viewing grayscale medical images, such as X-rays, for training and educational purposes.<sup>5</sup>



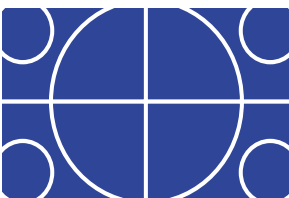
▲ Normal Mode



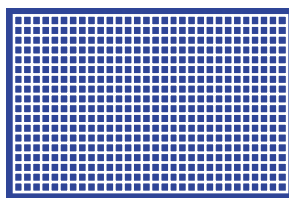
▲ DICOM Simulation Mode

### Test patterns

The PowerLite 4100 also features four test patterns for precise setup, including detecting distortion, checking linearity, color reproduction and bleeding, and DICOM simulation mode.



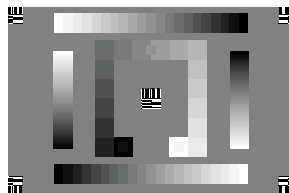
▲ Standard



▲ Cross-Hatch



▲ Color Bars



▲ Grayscale

### Built-in closed captioning

- Accommodates those with hearing impairments
- Delivers important content when audio broadcasting is not preferred
- Helps save money — no need to pay for an additional decoder and its installation
- Effective and easy to use — easily enabled or disabled through the projector remote or menu



## PowerLite® 4100

### Multimedia Projector

Product Name	Product Code	UPC
PowerLite 4100	V11H380020	0 10343 88096 2
Genuine Epson Lamp	V13H010L62	0 10343 88122 8
Replacement Air Filter	V13H134A17	0 10343 86897 7

#### Specifications

##### Projection System

High-aperture Epson 3LCD, 3-chip technology

##### Projection Method

Front/rear/ceiling mount

##### Driving Method

Epson Poly-silicon TFT Active Matrix

##### Pixel Number

786,432 pixel x 3 LCDs (1024 x 768)

##### Native Resolution

1024 x 768 (XGA)

##### Aspect Ratio

Supports 4:3, 16:9, 16:10

##### Pixel Arrangement

Cross stripe

##### Color Light Output<sup>1</sup>

4500 lumens

##### White Light Output<sup>1</sup>

4500 lumens (ISO 21118 standard)

##### Contrast Ratio (High Brightness, Dynamic Mode)

1000:1

##### Brightness Uniformity (typical)

89%

##### Color Reproduction

16.7 million colors

##### Size (projected distance)

30" – 300"

##### Lens Shift

Vertical: ±50 degrees

Horizontal: ±10 degrees

##### Keystone Correction

Vertical: ±40 degrees

Horizontal: ±20 degrees

##### Lamp Type

275 W UHE

##### Lamp Life<sup>7</sup>

2000 hours (Normal Mode)

3000 hours (ECO Mode)

#### Effective Scanning Frequency Range

##### Pixel Clock

13.5 MHz – 162 MHz (up to UXGA 60 Hz)

##### Horizontal

15 kHz – 92 kHz

##### Vertical

50 Hz – 85 Hz

#### Video I/O

##### Display Performance

NTSC: 560 line

PAL: 560 line

(depends on observation of the multi-burst pattern)

##### Input Signal

NTSC/NTSC4.43/PAL/M-PAL/N-PAL/

PAL60/SECAM

480i/576i/480p/576p/720p/1080i/1080p

Pixel works: video chip

3D Y/C separation, noise reduction

motion compensated

Interface-Progressive conversion

(2 – 2, 3 – 2 film detection)

##### Interfaces

Computer: D-sub 15 pin x 1

Composite video: BNC x 1

Video: 5-BNC x 1

Network: RJ-45 x 1, 100 Mbps

Serial: RS-232c

#### Projection Lens

##### Type

Manual focus/zoom

##### F-number

1.65 – 2.55

##### Focal Length

21.28 mm – 37.94 mm

##### Zoom Ratio

Optical zoom 1.0 – 1.8

##### Throw Ratio Range

1.30 – 2.36

#### Other Features

##### Operating Temperature

32 ° to 104 °F (0 ° to 40 °C)

##### Power Supply Voltage

100 – 240 V ±10%, 50/60 Hz AC

##### Power Consumption

390 W (Normal Mode)

323 W (ECO Mode)

10 W Standby (Communication on)

0.38 W Standby (Communication off)

##### Fan Noise

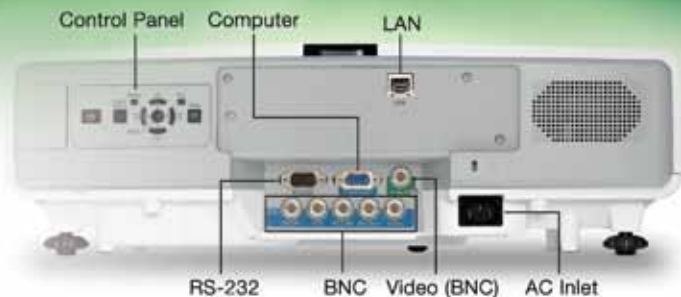
33 dB (Normal Mode)

28 dB (ECO Mode)

##### Security

Security Cable Hole, Lens Lock,

Kensington® Lock provision



#### Dimensions (W x D x H)

##### Including Feet (with standard lens)

18.50" x 12.26" x 5.96"

##### Excluding Feet, Lens

18.5" x 12.26" x 5.31"

Weight 15 lb

#### Remote Control

##### Features

Power, source search selection, computer, video, A/V mute, freeze, user ID, auto, aspect, color mode, num, page up and down, E-zoom, volume, help, menu, enter, esc and pointer functions

##### Operating Angle

Right/left:

Front: ± 60 degrees

Rear: ± 30 degrees

Upper/lower:

Front: ± 20 degrees

Rear: +10 to +45 degrees

##### Operating Distance

49 ft

#### Support

##### The Epson Connection<sup>SM</sup>

Pre-sales support

U.S. and Canada 800-463-7766

Internet website [www.epson.com](http://www.epson.com)

##### Service Programs

Two-year limited warranty, Epson Road

Service program, Epson PrivateLine®

dedicated toll-free support (U.S. and

Canada only) and 90-day limited

lamp warranty

##### What's In The Box

PowerLite 4100 projector, power cable,

computer cable (VGA), projector remote control

with batteries, user manual CD, EasyMP®

software CD, Quick Setup Sheet, PrivateLine

support card, registration card, password

protection sticker and lens lock screw

#### Accessory Part Numbers

Genuine Epson lamp	V13H010L62
Replacement air filter	V13H134A17
Replacement remote control	1485872
Advanced projector ceiling mount with precision gear	ELPMBPRG
Adjustable suspended ceiling channel kit	ELPMBP01
False ceiling plate kit	ELPMBP02
Structural round ceiling plate	ELPMBP03
Adjustable extension column (pipe) 8" – 11"	ELPMB01
Kensington security lock	ELPSL01
50-inch portable screen (4:3 aspect ratio)	ELPSC06
60-inch portable pop-up screen (4:3 aspect ratio)	ELPSC07
80-inch portable pop-up screen (4:3 aspect ratio)	ELPSC08
Duet™ portable projector screen (4:3/16:9 combination)	ELPSC80
Component to VGA video cable	ELPKC19
S-video cable	ELPSV01
Distribution amplifier	ELPD01
Remote control (ELPST16)	V12H007T16
Image presentation camera (ELPDC05)	V12H162020

#### Packaging Specifications

##### PowerLite 4100

Dimensions 21.9" x 18.4" x 11.1" (W x D x H)

Weight 21.3 lb

##### Genuine Epson Lamp

Dimensions 6.3" x 5.6" x 5.6" (W x D x H)

Weight 0.8 lb

Master Carton

Dimensions 28.4" x 13.1" x 6.8" (W x D x H)

Weight 9 lb

Units Per Master Carton 10

##### Replacement Air Filter

Dimensions 11.3" x 3.7" x 1.9" (W x D x H)

Weight 0.21 lb

Master Carton

Dimensions 19.2" x 11.8" x 4.8" (W x D x H)

Weight 3.09 lb

Units Per Master Carton 10

1 White and color light output will vary depending on mode selected. White light output measured using ISO 21118 standard.

2 Data source: ProjectorCentral.com Jan 2010. Average of 910 shipping models for which the manufacturers provided lumens and total power data, all resolutions and brightness levels.

3 See our website for convenient and reasonable recycling options at [www.epson.com/recycle](http://www.epson.com/recycle)

4 SmartWay is an innovative partnership of the U.S. Environmental Protection Agency that reduces greenhouse gases and other air pollutants and improves fuel efficiency.

5 This projector does not meet the DICOM standard Part 14 and should not be used as a medical diagnostic device.

6 A 3000-hour filter cleaning cycle recommendation is based on normal room conditions. Cleaning requirements may vary depending on use, environment and other conditions.

Cleaning intervals may be adjusted to accommodate the environment in which the projector is used.

7 Lamp life will vary depending upon mode selected, environmental conditions and usage. Lamp brightness decreases over time.

#### Epson America, Inc.

3840 Kilroy Airport Way, Long Beach, CA 90806

#### Epson Canada, Ltd.

3771 Victoria Park Avenue, Toronto, Ontario M1W 3Z5

#### www.epson.com

www.epson.ca