

General Product Description

Two-way full-range passive floor monitor system in a unique slant sided enclosure. Includes dual 8-inch woofers and a 1"/25 mm voice coil compression driver on a 100° x 100° constant-directivity horn. Cloth coverable steel grille.

Applications

The FRI-28LPM utilizes EV's exclusive RMD™ (Ring-Mode Decoupling) to provide outstanding vocal clarity and intelligibility in a cost-effective two-way system. The versatile, compact enclosure features a low profile cabinet design with non-skid rubber footing.

The 100° x 100° horn pattern allows broad coverage for near field applications. Five year warranty.

FRI-28LPM

Low Profile Monitor Speaker System

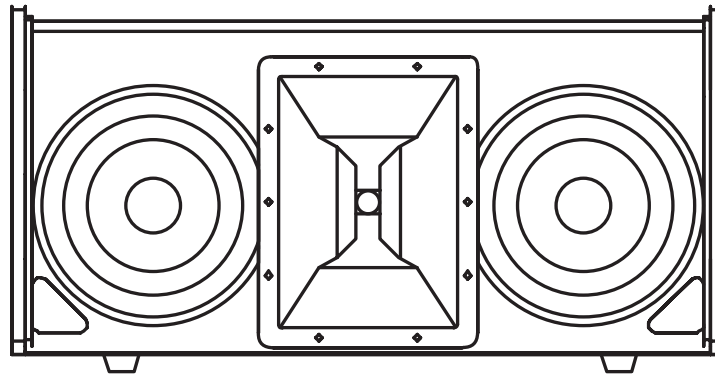


F R I
S P E A K E R
S Y S T E M S

Applications include:

Houses of Worship
Live Music Clubs

Discos
Gymnasiums



Speaker Description:

| | |
|---|--|
| Part Number | FRI28LPM-BLK |
| LF Section & Components | Dual 8-inch woofers in vented enclosure |
| HF Section & Components | Compression driver with 1-inch titanium diaphragm on a constant-directivity horn |
| System Configuration | Two-way, Full-range |
| Powering Configuration | Passive |
| Recommended High-Pass Frequency (12 dB/octave min.) | 50 Hz |
| Cabinet Type (shape) | Low profile slant design |
| Enclosure Materials | 13-ply plywood |
| Finish | Black Acrylic |
| Connectors | (2) Neutrik® NL4 |
| Grille | Powder-coated perforated 18GA steel |
| Options | WH-white acrylic finish |

FRI-28LPM

Speaker System

Speaker Characteristics

Frequency Response (passive)

| | |
|--------|--------------|
| -3 dB | 70-20,000 Hz |
| -10 dB | 55-16,000 Hz |

Axial Sensitivity

| | |
|-----------------------|-------|
| (SPL/1 W/1 m) Passive | 93 dB |
|-----------------------|-------|

Impedance

8 ohms

Power Handling

| | |
|-----------------|-----------|
| Long-term (EIA) | 200 watts |
| Short-term peak | 800 watts |

Calculated Maximum Output SPL

| | |
|-----------|--------|
| Peak | 122 dB |
| Long Term | 116 dB |

Nominal Coverage Angle

| | |
|--------------------|------|
| Horizontal (-6 dB) | 100° |
| Vertical (-6 dB) | 100° |

Dimensions

| | |
|--------|--------------------|
| Height | 8.75 in. (222 mm) |
| Width | 24.50 in. (622 mm) |
| Depth | 14.0 in. (356 mm) |

Weights

| | |
|-----------------|-------------------|
| Net Weight | 40.0 lb (18.2 kg) |
| Shipping Weight | 52.0 lb (23.6 kg) |

Architects' and Engineers' Specifications

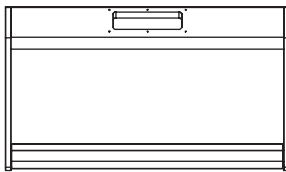
The two-way full-range loudspeaker system shall incorporate dual 8-inch LF transducers and a 1"/25 mm voice coil HF compression driver.

The LF driver shall be mounted in a vented enclosure tuned for optimum low-frequency response. The HF driver shall be loaded on constant-directivity horn with a nominal coverage pattern of 100° (h) x 100° (v). An internal passive filter network shall provide acoustical crossover and system equalization.

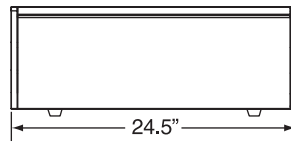
System frequency response shall be 55 Hz to 16 kHz measured on axis. The loudspeaker shall produce a sound pressure level (SPL) of 93 dB on axis at 1 meter with a power input of 1 watt, and shall be capable of producing a full-power peak output of 122 dB on axis at 1 meter. It shall handle 200 watts of amplifier power long-term (EIA Standard), and shall have a nominal impedance of 8 ohms.

The loudspeaker enclosure shall be 5-sided. It shall be constructed of 13 ply void-free cross-grain-laminated plywood and shall employ extensive internal bracing. It shall be finished in black acrylic paint. Input connectors shall be two Neutrik® NL4 and four rubber feet shall be affixed to the bottom of the cabinet. The front of the loudspeaker shall be cloth coverable with a powder-coated perforated 18 GA steel grille.

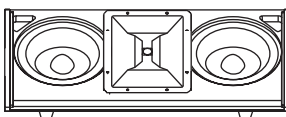
The two-way full range loudspeaker shall be the Electro-Voice model FRI-28LPM.



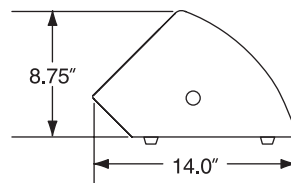
Top View



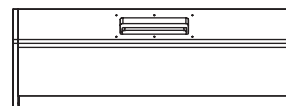
Front View
(with grille)



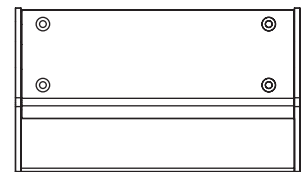
Front View
(with grille removed)



Left Side View



Back View



Bottom View

USA: Telex Communications Inc. 12000 Portland Ave South, Burnsville, MN 55337, USA, Phone: 952-884-4051, Fax: 952-884-0043
Western Canada: PAG Canada. 23 Hawkesbury Crescent, Winnipeg, MB R3P-1Y6, Canada, Phone: 888-850-8811, Fax: 204-489-7614
Eastern Canada: PAG Canada. 728 Eglinton Ave. East, Toronto, ON M4G 2K7, Canada, Phone: 800-881-1685, 416-431-4975, Fax: 416-431-4588
Quebec: Acoustik GE Inc. 5715 Kincaid, Montréal, PQ H4W 1Y7, Canada, Phone: 866-369-2864, 514-369-2864, Fax: 514-487-9525
Mexico: Telex Communications de Mexico. Parque Chapultepec 66-201, Naucalpan, Edo. Mex. 53390, Mexico, Phone: +52 5358-5434, Fax: +52 5358-5588
Latin America: Telex Communications Inc. 12000 Portland Ave South, Burnsville, MN 55337, USA, Phone: 952-887-7491, Fax: 952-887-9212

Germany: Telex EVI Audio GmbH. Hirschberger Ring 45, D 94315, Straubing, Germany, Phone: +49 9421-706 0, Fax: +49 9421-706 265
France: EVI Audio France S.A. Parc de Courcerin, Allée Lech Walesa, F 77185 Lognes, France, Phone: +33 1-6480-0090, Fax: +33 1-6006-5103
UK: Telex Communications Ltd. 4, The Willows Centre, Willow Lane, Mitcham, Surrey CR4 4NX, UK, Phone: +44 208 646 7114, Fax: +44 208 640 7583
Africa & Middle-East: Telex EVI Audio GmbH. Hirschberger Ring 45, D 94315, Straubing, Germany, Phone: +49 9421-706 0, Fax: +49 9421-706 265

Japan: EVI Audio Japan Ltd. 5-3-8 Funabashi, Setagaya-Ku, Tokyo, Japan 156-0055, Phone: +81 3-5316-5020, Fax: +81 3-5316-5031
Australia: EVI Audio (Aust) Pty Ltd. Slough Business Estate, Unit 23, Silverwater, N.S.W. 2128, Australia, Phone: +61 2-9648-3455, Fax: +61 2-9648-5585
China: EVI Audio (HK) Ltd. Unit E & F, 21F, Luk Hop Industrial Bldg., 8 Luk Hop St., San PO Kong, Kowloon, Phone: +852 2351-3628, Fax: +852 2351-3329
Singapore: Telex Pte. Ltd. 3015A Ubi Road 1, 05-10 Kampong Ubi Industrial Estate, Singapore 408705, Phone: +65 746-8760, Fax: +65 746-1206

www.electrovoice.com • Telex Communications, Inc. • www.telex.com

© Telex Communications, Inc. 09/2001
Part Number 38110-039 Rev A



Electro-Voice®

U.S.A. only.

For customer orders, contact the Customer Service department at 800/392-3497 Fax: 800/955-6831

For warranty repair or service information, contact the Service Repair department at 800/685-2606

For technical assistance, contact Technical Support at 866/78AUDIO

Please refer to the Engineering Data Sheet for warranty information.
Specifications subject to change without notice.