

## SPECIFICATIONS

<b>Loudspeaker Type:</b>	2-way, horn loaded, coaxial, weather-resistant
<b>Operating Range:</b>	100 Hz to 16 kHz 160 Hz to 12.5 kHz ( $\pm 3$ dB)
<b>Max Input Ratings:</b>	200W continuous, 500W program 40 volts RMS, 89 volts momentary peak
<b>Recommended Power Amplifier:</b>	420W to 600W @ 8 ohms
<b>Sensitivity (1W/1m):</b>	97 dB SPL (160 Hz to 10 kHz 1/3 octave bands) 97 dB SPL (250 Hz to 4 kHz speech range)
<b>Maximum Output:</b>	120 dB SPL / 127 dB SPL (peak)
<b>Nominal Impedance:</b>	8 ohms
<b>Minimum Impedance:</b>	4.6 ohms @ 10.4 kHz
<b>Nominal -6dB Beamwidth:</b>	90°H (+7° / -13°, 2 kHz to 10 kHz) 40°V (+35° / -10°, 2 kHz to 10 kHz)
<b>Axial Q / DI:</b>	13.5 / 11.3, 2 kHz to 10 kHz
<b>Crossover Frequency:</b>	2 kHz
<b>Recommended Signal Processing:</b>	100 Hz high pass filter
<b>Drivers:</b>	LF (1) 8" cast frame, Cool-Coil™ HF (1) 3/4" exit, titanium free, Ferrofluid-cooled
<b>Driver Protection:</b>	DYNA-TECH protection circuitry
<b>Input Connection:</b>	16-2 SJOW (12 ft / 4 m)
<b>Controls:</b>	None
<b>Enclosure:</b>	Rotomolded LLDPE, light grey
<b>Enclosure Hardware:</b>	None
<b>Mounting/Rigging Provisions:</b>	(5) rigging points (M8 hardware) 1-3/8" pole mount socket
<b>Grille:</b>	3-layer WeatherStop™, light grey (Zinc-rich epoxy dual-layer powder coated perforated steel grille, foam, woven poly mesh)
<b>Environmental Performance:</b>	IEC529 IP55W rating with a minimum 5-degree downward aiming angle
<b>Required Accessories:</b>	24 dB/Oct high pass filter
<b>Supplied Accessories:</b>	(1) Yoke bracket, light grey (1) Aiming strap
<b>Optional Accessories:</b>	PMB Series pole mount brackets
<b>Dimensions—Height:</b>	11.3 inches / 287 mm
<b>Width:</b>	11.3 inches / 287 mm
<b>Depth:</b>	13.3 inches / 338 mm
<b>Weight:</b>	20 lbs / 9.1 kg
<b>Shipping Weight:</b>	26.2 lbs / 11.9 kg

### NOTES:

- Sensitivity: Free field pink noise measurement at 20 ft (6.1 m) at 60% power; extrapolated to 1 meter and an input of 2.83 volts RMS.
- Watts: All wattage figures are calculated using the rated nominal impedance.



Shown: R.25-94Z in standard light grey

## APPLICATIONS

- Convention centers
- Fill speaker for stadia, athletic fields, arenas and race tracks
- Outdoor background music / paging systems
- Theme and amusement parks
- Fairgrounds and rodeos
- Malls, cruise ships, skating rinks
- Swimming pools

## FEATURES

- Weather-resistant, rotomolded UV enclosure
- Weather-treated drivers and crossovers
- Corrosion-resistant zinc-rich epoxy dual-layer powder coated steel grille and yoke
- High fidelity, all horn loaded
- High efficiency
- Integral mounting points
- High power passive crossover
- Optional 200W, 70V autoformer version available (model R.25-94TZ)
- Optional black and white versions (model R.25-94BZ and R.25-94WZ)
- Five-year product warranty / Fifteen-year enclosure warranty

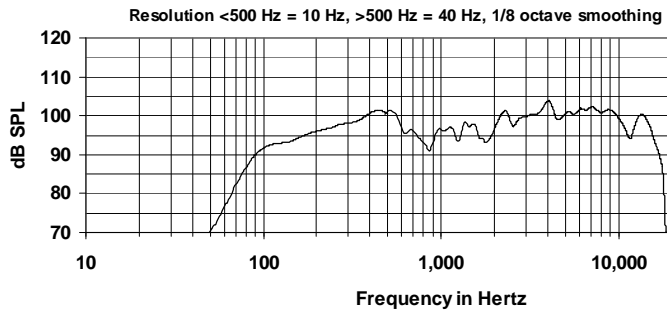
## DESCRIPTION

The R.25-94Z is a 2-way, full-range loudspeaker system designed to provide high quality voice and music reproduction in applications requiring extreme weather resistance. It is designed to withstand long-term exposure to tough, environmental conditions and to provide performance normally associated only with indoor loudspeakers. The R.25-94Z has an 8-inch (203mm) cone LF driver and a 3/4-inch (20 mm) exit HF compression driver with a weather resistant diaphragm. The HF driver is coupled to a nominal 90° x 40° horn. The HF assembly is coaxially mounted with the LF driver.

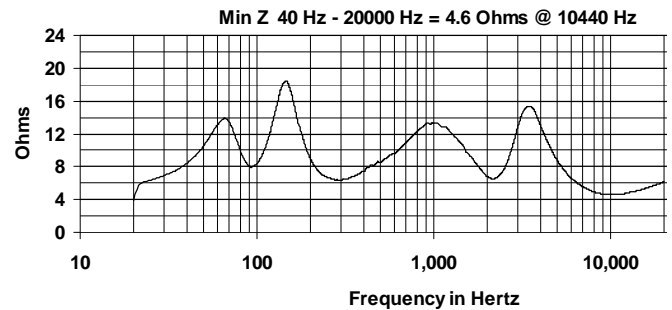
### R.25-94Z OPTIONS

"T" suffix	<b>Auto-transformer</b> version with integral 200W autoformer for 70V/100V applications
"B" suffix	<b>Black</b> version with black enclosure, black powder coated grille and black yoke
"W" suffix	<b>White</b> version with white enclosure, white powder coated grille and white yoke

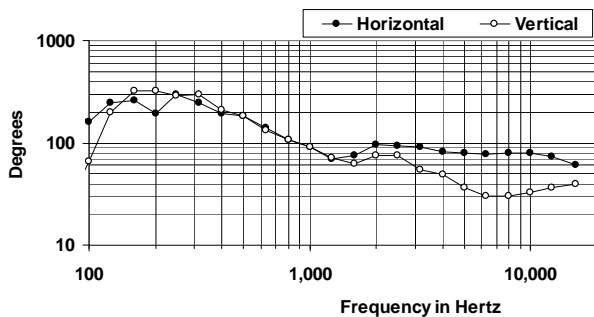
## FREQUENCY RESPONSE



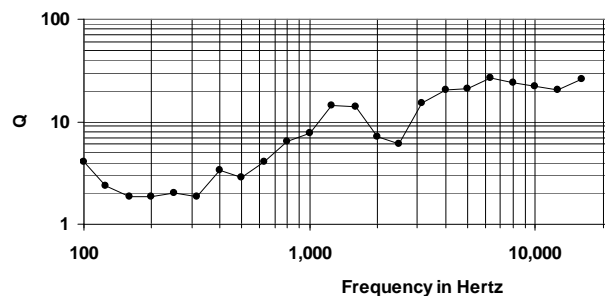
## IMPEDANCE



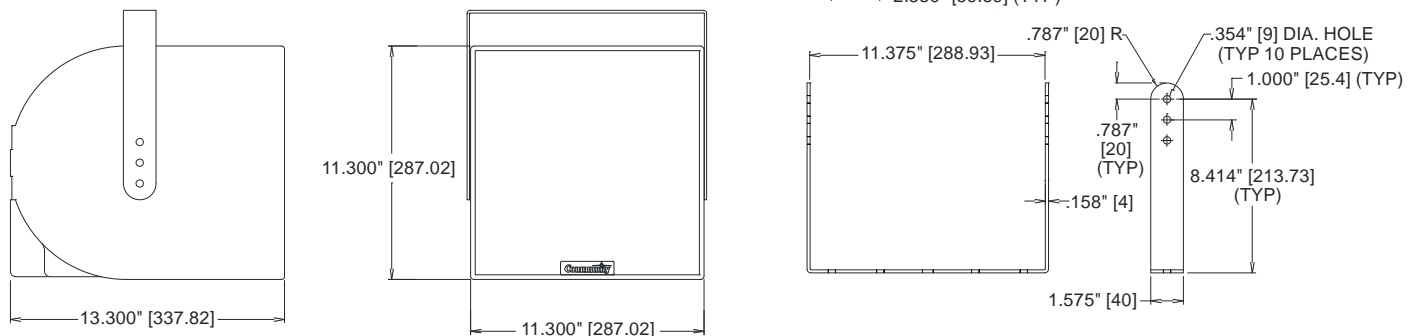
## BEAMWIDTH



## AXIAL Q



## DIMENSIONS



R.25 YOKE

## ARCHITECTURAL SPECIFICATIONS

The loudspeaker system shall be a two-way, full-range bass reflex design with a single cast 8" and one 3/4" exit HF driver coaxially mounted on a 90° x 40° horn. Drivers shall be connected to an integral crossover with a crossover frequency of 2 kHz with driver protection using DYNA-TECH active protection circuitry. The cabinet shall be a rotomolded low linear density polyethylene enclosure providing weather and UV resistance with a three-layer weather resistant grille. The steel grille shall be powder coated with a proprietary zinc-rich epoxy dual-layer powder coating process in light grey to color match the enclosure. The system shall have an IEC529 IP rating of IP55W with a minimum 5-degree downward aiming angle. The input connection shall be one 12' (4m) SJOW #16-gauge cable with stripped ends. The enclosure shall incorporate five M8 rigging points for multiple mounting options. In addition, the loudspeaker will be supplied with one zinc-rich epoxy dual-layer powder coated steel yoke bracket. The system shall have an amplitude response of 160 Hz - 12.5 kHz (+/- 3 dB), input capability of 40 V RMS, 97 dB Sensitivity at one meter and 2.83 V, 8 Ohm nominal impedance. The nominal dispersion shall be 90° H x 40° V from 2 kHz to 10 kHz. The dimensions of the enclosure are defined as 11.3" x 11.3" x 13.3" (HWD) at a weight of 20 lbs.

Community strives to improve its products on a continual basis. Specifications are therefore subject to change without notice.