

BRETFORD BASICS™

BASICS SERIES CONFERENCE TABLES

Bretford's Basics Conference Tables are available in two shapes: Rectangle and Race Track. Each top is constructed of particle board finished in either Wild Cherry or Grey Nebula laminate. The steel base is finished in Raven black powder paint. Two grommets, located on the top of the table, allow for easy cord management.



FEATURES

- Available in a Rectangle or Race Track shaped top in 72", 96" or 120" lengths and 36" or 42" depths.
- 1" thick laminate top is available in a Wild Cherry or Grey Nebula laminate with a vinyl T-molded edge and two grommet holes with covers for cord management. Particle board backing contains an average of 70% recycled material.
- Tops have built in steel stiffeners to prevent the top from bowing under heavy weight or from time.
- D-tube steel base is finished in a Raven Black powder paint and contains an average of 30% post-consumer recycled steel.
- Base design accommodates cord management by allowing cords to drop down to the floor through the D-tube legs.
- Base includes adjustable leveling glides that can be adjusted from the top with a screwdriver.
- Tables can be sold as a single unit or can be sold with the top and base packs marketed separately.
- Optional power domes attach through the grommet holes and provide either 4 UL listed electrical outlets or 2 UL listed electrical outlets and 2 RJ-45 data jacks above the work surface, power units have a 6' power cord.
- Complies with the GREENGUARD Environmental Institute's GREENGUARD Children & Schools Indoor Air Quality standards, contributing to points toward Leadership in Energy and Environmental Design (LEED) Certification.
- Made in the USA.



OVERALL DIMENSIONS

Racetrack Shaped Tables

RAE3672-_	72"l x 36"d x 29"h
RAE4272-_	72"l x 42"d x 29"h
RAE3696-_	96"l x 36"d x 29"h
RAE4296-_	96"l x 42"d x 29"h
RAE3620-_	120"l x 36"d x 29"h
RAE4220-_	120"l x 42"d x 29"h

Rectangle Shaped Tables

REC3672-_	72"l x 36"d x 29"h
REC4272-_	72"l x 42"d x 29"h
REC3696-_	96"l x 36"d x 29"h
REC4296-_	96"l x 42"d x 29"h
REC3620-_	120"l x 36"d x 29"h
REC4220-_	120"l x 42"d x 29"h

COLOR/FINISH

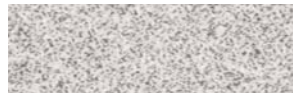
Base: Black powder paint

Trim: Black

Top: Choice of Wild Cherry (-CY) or Grey Nebula (-NB) laminate



WILD CHERRY - CY



GREY NEBULA - NB

STANDARD EQUIPMENT

1" laminate top [72" and 96"L Tables] (1)

1" laminate top [120"L Tables] (2)

Grommet Hole Covers (2)

Steel Legs [72" and 96"L Tables] (2)

Steel Legs [120"L Tables] (3)

ACCESSORIES

RDOME40	4 Outlet Dome
RDOME22	2 Outlet, 2 Data Jack Dome

WEIGHT AND FREIGHT CLASS

RAE3672-_	134 lbs., Freight class 70
RAE4272-_	149 lbs., Freight class 70
RAE3696-_	164 lbs., Freight class 70
RAE4296-_	185 lbs., Freight class 70
RAE3620-_	205 lbs., Freight class 70
RAE4220-_	230 lbs., Freight class 70
REC3672-_	134 lbs., Freight class 70
REC4272-_	149 lbs., Freight class 70
REC3696-_	164 lbs., Freight class 70
REC4296-_	185 lbs., Freight class 70
REC3620-_	205 lbs., Freight class 70
REC4220-_	230 lbs., Freight class 70

Ships ready to assemble in two (2) carton packs.

CARTON DIMENSIONS

Models RAE3672 and REC3672

Top Pack - 83-1/2"w x 38-1/2"d x 3"h

Leg Pack - 31-1/2"w x 31-1/2"d x 7-1/2"h

Models RAE3696 and REC3696

Top Pack - 103-1/2"w x 43-1/2"d x 3"h

Leg Pack - 31-1/2"w x 31-1/2"d x 7-1/2"h

Models RAE3620 and REC3620

Top Pack - 67"w x 43-1/2"d x 4"h

Leg Pack - 31-1/2"w x 31-1/2"d x 10-1/2"h

Models RAE4272 and REC4272

Top Pack - 83-1/2"w x 44-1/2"d x 3"h

Leg Pack - 31-1/2"w x 31-1/2"d x 7-1/2"h

Models RAE4296 and REC4296

Top Pack - 103-1/2"w x 49-1/2"d x 3"h

Leg Pack - 31-1/2"w x 31-1/2"d x 7-1/2"h

Models RAE4220 and REC4220

Top Pack - 67"w x 49-1/2"d x 4"h

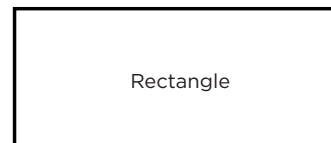
Leg Pack - 31-1/2"w x 31-1/2"d x 10-1/2"h

SUGGESTED SPECIFICATIONS

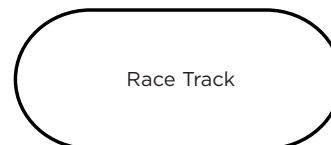
Conference Table tops are constructed of 1" thick particle board finished in laminate and 3mm T-mold edge detail. Particle board features an average of 70% recycled materials. All tables are finished in your choice of Wild Cherry wood laminate (-CY) or a Grey Nebula laminate (-NB). Each top incorporates a 18 gauge metal stiffener under the work surface to provide extra strength. All 72" and 96" w table tops are one piece; 120" w table tops are in two pieces. Each top has two round grommet holes which can be equipped with the optional Power Domes (see below). Bases are 14-gauge D-tubes finished in Raven Black powder paint. 14-gauge steel elliptical perforations in the legs which allow for easy wire concealment. All steel parts are constructed with "prime" steel which contains 25% to 35% post-consumer recycled materials. Cords can be dropped through the grommet, into the top of the leg, through the leg and out the bottom. All tables feature easily accessible top leveling glides on each foot channel. Non-scratch polyethylene toe caps complete the leg assembly and come in black. Tables are GREENGUARD CHILDREN & SCHOOLS INDOOR AIR QUALITY CERTIFIED®.

MADE IN THE USA

All Basics Series Conference Tables are made at one of Bretford's Chicago area manufacturing facilities using union labor.



Rectangle



Race Track



11000 SEYMOUR AVENUE
FRANKLIN PARK, ILLINOIS 60131 USA
TOLL FREE PHONE 800-521-9614
PHONE 847-678-2545
TOLL FREE FAX 800-343-1779
FAX 847-678-0852
WWW.BRETFORD.COM