

CF/CFX

Point Source Array



Part of CF/CFX Series

MODULAR POINT SOURCE LINE ARRAY SYSTEM



CF/CFX Point Array

INTRODUCING THE CF/CFX Point Array

Designed for power, portability and versatility, the CF/CFX101-LA from Renkus-Heinz is the ideal solution for today's small and mid-sized venues, including auditoria, night clubs, theaters and houses of worship. With the flexibility to be flown, ground-stacked or pole-mounted, the CF/CFX101-LA delivers the performance and pattern control of a line array, with the clarity of a point source system, in a compact, sleek and affordable design that's equally at home as a portable system or a permanent installation.

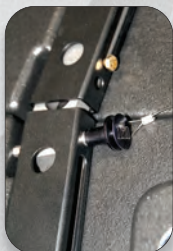
Up to four CF/CFX101-LA cabinets can be arrayed to provide a 90x60 degree coverage pattern, delivering up to 9 dB more output and tighter vertical pattern control than a conventional single cabinet. Traditional line arrays require two or three times as many cabinets to provide the same range of coverage.

Alone or combined with the CF/CFX15S subwoofer, the CF/CFX101-LA can be flown, ground-stacked, or pole-mounted, or used as a center cluster to complement an existing left-right system, making it the perfect solution for a wide range of installed or portable sound needs.



TUNED CONIC DIVERTER

When it comes to innovation, once again Renkus-Heinz leads the way. Our new Tuned Conic Diverter carefully manipulates the curvature of the wavefront within the horn so that it's curvature matches the curvature of the array. As sound progresses through the horn, it's wavefront is progressively manipulated, passing through a tuned conic diverter, slowing the wavefront's expansion in the center modifying its curvature to match the shape of the cabinet.



SAFE & SIMPLIFIED HARDWARE

Simple, rugged, integral hardware allows for maximum versatility, maximum safety, and fast setup and tear-down. CF/CFX101-LA hardware has been designed to work either way so left and right systems can be setup symmetrically without the need for mirror image cabinets. CF/CFX15S matched subwoofers employ the same simple yet sturdy hardware enabling the system to be flown beneath the subwoofer.



MULTI-ANGLE POLE

All CF/CFX101-LA cabinets come standard with an integral multi-angle pole socket allowing the cabinet to be supported on a standard 35mm loudspeaker stand, or on a sturdy pole attached to the subwoofer. This allows the full-range cabinet to be angled straight ahead, up or down as the situation demands for optimum coverage and performance.



HIGH FREQUENCY ARRAY CONTROL

As the CF/CFX101-LA can be used in many and varied combinations simple High Frequency level control switches are provided on the back of each cabinet. The user can select between a Flat response for a single cabinet, or boost the HF by +6dB or +9dB depending on how many cabinets are in the array and how much throw is required.

CF/CFX101-LA Point Array Module

The CF/CFX101-LA Point Array Module has been designed with your requirements for flexibility in mind. Each cabinet can be pole mounted, flown from a frame or suspended using M10 eyebolts. Suited equally to fixed installation or portable applications the array module offers a consistent 90 degree horizontal and tight 15 degree vertical coverage.

Neodymium magnets on the single 10" Low Frequency woofer and dual 1" High Frequency compression drivers provide the ideal balance of power and portability, while the revolutionary performance of the Tuned Conic Diverter waveguide ensures the smoothest possible transition between cabinets. CF/CFX Point Array is a true point source arrayable system offering the benefits of both line and point source arrays.



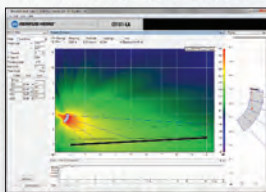
CF101-LA



PF2-500R

SELF or EXTERNALLY POWERED

As with all Renkus-Heinz loudspeakers Self-Power is always an option. CF/CFX Point Array cabinets are available as passive loudspeakers for use with external amplification, or with our highly acclaimed PF Series Intelligent Digital Amplification built-in. The PF Series delivers audiophile-quality performance, ultra-low distortion and unparalleled efficiency in a sleek, lightweight design.



EASE FOCUS

EASE Focus allows users and system designers to quickly and accurately predict the response of the array. Simply define the audience areas and you can easily place the array, add or remove cabinets and adjust its height, location and angle until you get the desired results in the simulation.



RENKUS-HEINZ AUDIO OPERATIONS NETWORK

Passive, powered or networked, you can choose the system configuration that meets your needs at any time. Whenever you are ready for Ethernet audio networking, your CF loudspeakers are too. At the factory or in the field, the CFX passive connector plate can be easily replaced by one of five PF Series intelligent Class D digital amplifiers.

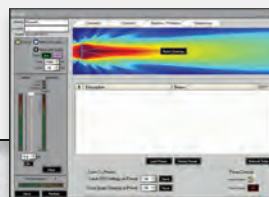
A Windows GUI empowers RHAON users to connect each Renkus-Heinz powered loudspeaker to a CobraNet network, control 8 parametric EQ filters, up to 340 ms of delay and dynamics processing via onboard DSP, and supervise both the amplifier and drivers.



Connect



Control



Beams / Presets



Supervise

CF/CFX Point Array



CF/CFX101-LA

Dispersion: 90° H by 15° V
Freq. Resp: +/-3 dB 70 Hz to 18 kHz
LF Driver: 1x 10" Neodmium Magnet
500 W PGM @ 8 Ohms
HF Driver: 2x 1" Neodymium Magnet Compression Drivers
300 W PGM @ 4 or 16 Ohms depending on configuration
Enclosure: Plywood, Perforated metal grill
Finish: Black or White Paint
Hardware: Integral Flying Hardware
6 Point Metric M10 threads
Integral 35mm Multi-Angle Pole Socket

Dimensions

inch: H 12.9 x W 24 x D 14.9
cm: H 32.7 x W 61 x D 38

Weight

lbs: 59.4
kg: 26.9

Self-Powered: CF101-LA Only

Amplifier: PF2-500R 500W LF, 200W HF @ 4 ohms



CF/CFX15S

Freq. Resp: 40 Hz to 100 Hz
LF Driver: 1x 15"
500 W PGM @ 8 Ohms
Enclosure: Plywood, Perforated metal grill
Finish: Black or White Paint
Hardware: Integral Flying Hardware
6 Point Metric M10 threads
Integral Pole Socket

Dimensions

inch: H 18.9 x W 24 x D 22.5
cm: H 48.1 x W 61 x D 57.2

Weight

lbs: 109.1
kg: 49.48

Self-Powered: CF15S-5R Only

Amplifier: PF1-500R 500W @ 4 ohms

