

TANNOY®

INCEILING SERIES

INCEILING SERIES

INCEILING SERIES



ic6 DC

The new Tannoy iC6 DC is a premium quality compact ceiling monitor system based around a new 6.5" (165mm) point source, constant directivity Dual Concentric™ transducer. Combining a long throw, multi fibre, paper pulp bass cone, the reference quality studio monitor driver also delivers extended bandwidth with its high frequency section that utilises a 25-micron titanium dome and neodymium magnet system. The robust driver construction provides high power handling (110 Watts RMS) and the very wide bandwidth (36Hz – 36KHz) ensures exceptional intelligibility for music or speech.

Conventional two-way discrete ceiling speaker designs suffer an inherent design problem due to cancellations appearing off axis at the crossover frequency in the vertical plane. The point source design of the Tannoy iC6 DC, however, delivers a smooth, uniform frequency response over a wide area of coverage.

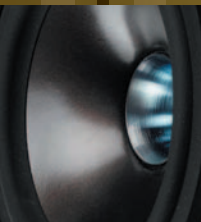
With its low profile construction, the unit is suitable for both commercial and residential applications. A metal 'C-ring' is supplied as standard to enable a very high degree of integrity when fixing to various ceiling materials. An optional shallow back can is available to allow fitting in areas with restricted space whilst also ensuring optimum acoustic performance.

Packaged in a design that offers outstanding ease of installation, construction of the iC6 DC is based around a rigid moulded ABS baffle with excellent structural integrity. A patented, ultra-secure, polycarbonate, three-clamp, self-aligning mounting system ensures a performance enhancing rigid acoustic coupling with the ceiling surface.

The perforated metal grille and low profile mounting frame of the iC6 DC can be painted to blend in seamlessly with any type of décor.



GRILLE DETAIL



DRIVER DETAIL



TERMINAL PLATE



INSTALL FEATURE

INCEILING SERIES

ic6 DC

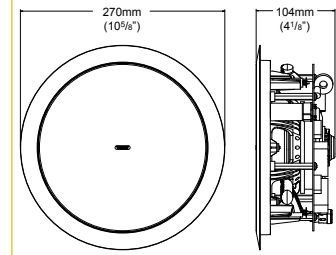
SYSTEM

System Type	In-ceiling Loudspeaker	
Frequency Response - 6dB (1)	36Hz-36kHz	
Recommended Amplifier Power	20 - 150	
Power Handling (3)	Average (3)	80 Watt
	Programme	160 Watt
	Peak	325 Watt
Sensitivity 2.83 Volts @ 1 metre (1)	Half Space	91dB
Maximum SPL@ 1 metre (4)	Average	113dB
	Peak	119dB
Impedance	8Ω	
Dispersion	90°	
Driver Complement	Dual Concentric™ 1 x 25mm (1") Titanium Dome 1 x 165 (61/2") bass driver	
Crossover	1.8kHz, passive	

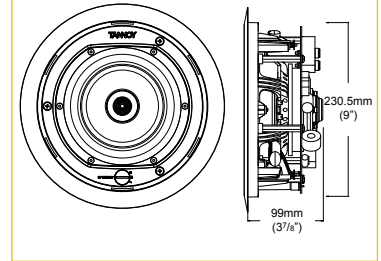
CONSTRUCTION

Finish	White - paintable	
Connectors	Gold plated spring terminals	
Dimensions	Front Baffle	270 x 270 x 104mm (10 ⁵ / ₈ x 10 ⁵ / ₈ x 4 ¹ / ₈ ")
	Mounting Panel Thickness	25mm (1") Maximum
Rec. in-ceiling Mounting Volume	30 litres (1.1 cu.ft.)	
Mounting Depth	99mm (3 ⁷ / ₈ ")	
Weight (each)	ic6 DC	3.0kg (6.6lbs)
Shipping	Quantity	1
	ic6 DC	7.3kg (16.9lbs)
	Pack Dimensions	565 x 300 x 195mm (22 ¹ / ₄ " x 11 ¹³ / ₁₆ " x 7 ¹¹ / ₁₆ ")
Accessories	Pre-installation ring Back can	

FRONT GRILLE & SIDE ELEVATION

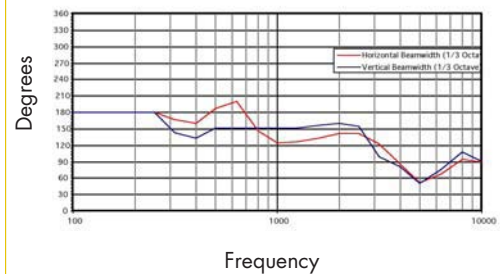


FRONT & SIDE ELEVATION



BEAMWIDTH PLOT

Beamwidth vs Frequency



NOTES: (1) Average over stated bandwidth. Measured at 1m on axis in an anechoic chamber, in a critically tuned enclosure. (2) Measured 'in-ceiling'
(3) Long term power handling capacity as defined in EIA standard RS - 426A. Crest Factor 6. (4) Unweighted pink noise input, measured at 1m in an anechoic chamber

A full range of measurements, performance data, and Ease™ Data can be downloaded from www.tannoy.com

Tannoy operates a policy of continuous research and development. The introduction of new materials or manufacturing methods will always equal or exceed the published specifications, which Tannoy reserves the right to alter without prior notice. Please verify the latest specifications when dealing with critical applications.

APPLICATIONS

- Foreground music & paging systems
- Multi - room stereo systems
- Home theatre
- Business music systems
- Boardrooms and offices
- Retail environments
- Public address systems
- Reception / waiting rooms
- Airports, convention centres and hotels

FEATURES

- Dual Concentric™ - 25mm (1") Titanium Dome
- 165mm (6.5") mid / bass driver
- Wide dispersion
- Low insertion loss 60 Watt line transformer -
for a more powerful and dynamic performance
- 19mm (3/4") moulded ABS baffle for structural
integrity
- 3 clamp mounting system
- Quick and easy installation
- Five year loudspeaker warranty

ARCHITECTURAL SPECIFICATIONS

The in-wall system shall consist of one 165mm (6.5") Dual Concentric™ full range point source, constant directivity transducer. The three-way system shall incorporate an optimised low loss crossover network.

Performance of the ic6 DC shall meet or exceed the following criteria; Frequency response measured at 1 metre on axis with a swept sine wave shall be 36Hz - 36kHz ±6dB, sensitivity shall be at least 91dB for 2.83V @ 1 metre with minimal loss accounted for. The driver impedance and maximum power handling (without transformer) shall be 8Ω and 325W respectively. The dispersion of the in-ceiling system shall be 90° conical.

In 70V or 100V distributed audio systems the ic6 DC shall be used with the THP60 high performance transformer with the optional 60, 30, 15 and 7.6W taps* available.

Utilising a three way clamping mechanism, the baffle shall be constructed from 19mm (3/4") moulded ABS and supplied with a perforated metal grille, both components shall be paintable. The mounting depth shall not exceed 93mm (3⁷/₈"). The system shall not exceed the following dimensions; 270 x 270 x 104mm or 10⁵/₈ x 10⁵/₈ x 4¹/₈" (H x W x D).

The in-wall system shall be...the Tannoy ic6 DC.

*70V version only

TANNOY®

Tannoy United Kingdom

T: +44 (0) 1236 420199

F: +44 (0) 1236 428230

E: enquiries@tannoy.com

Tannoy North America

T: (519) 745 1158

F: (519) 745 2364

E: inquiries@tannoyna.com

Tannoy Deutschland

T: 0180 1111 88 1

F: 0180 1111 88 2

E: info@tannoy.com

tannoy.com