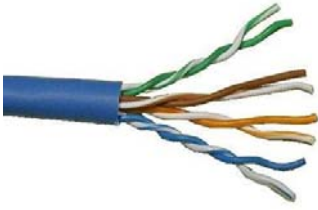


Technical Data Sheet- Category 6 Network



WEST PENN WIRE

2833 West Chestnut Street
Washington, PA 15301
Toll Free: (800) 245-4964
Fax: (724) 222-6420
www.westpenn-wpw.com

PART NUMBER:	4246
DESCRIPTION:	23 AWG.- 4 PAIR Solid bare copper conductors, unshielded with an overall jacket.
NEC RATING:	CMR
APPROVALS:	(UL) C(UL) Listed or c(ETL)us Listed
APPLICATION:	Indoor - Category 5E Applications- Ethernet, IP Cameras, Digital Integration Meets or exceeds TIA/EIA 568B.2.1 Category 6 Specifications

Construction Parameters:

Conductor	23 AWG Bare Copper
Stranding	Solid
Number of Conductors	8 (4 Pair)
Insulation	Thermoplastic - .008"
Shield	None
Drain	None
Core Separator	Yes
Jacket Material	PVC
Overall Cable Diameter	0.225" Nom.
Approximate Cable Weight	30 Lbs/1M' Nom.
Flame Rating	UL1666

Electrical & Environmental Properties:

Operating Temperature Rating	-20°C To +60°C
Operating Voltage Rating	300 V RMS
DC Resistance per Conductor @ 20deg C	7.8 Ohms/100m Nom.
Mutual Capacitance	14pf/ft Nominal
Nominal Impedance	100 Ohms+/-15% (1-100Mhz)
Velocity of Propagation	66% Nominal
Delay Skew	25ns/100m MAX
Standards	TIA/EIA568-B.2 1
Insulation Colors	1.Blue/White-Blue, 2. Orange/White-Orange 3. Green/White-Green, 4. Brown/White-Brown
Jacket Color	Gray, White, Blue
RoHS Compliant	Yes

Electrical Specifications:

Frequency: MHz	1	10	25	100	250	400
Insertion Loss: dB/100m	1.8	5.7	9.1	19.0	31.5	41.3
NEXT: dB/100m	74.3	59.3	53.3	44.3	38.3	35.3
ACR: dB/100m	72.3	53.3	46.3	24.5	5.5	--
PS-NEXT: dB/100m	72.3	57.3	51.3	42.3	36.3	33.3
PS-ACR: dB/100m	70.3	51.3	41.8	22.5	3.5	--
ELFEXT: dB/100m	67.8	47.8	39.8	27.8	19.8	15.8
PS-ELFEXT: dB/100m	64.8	44.8	36.8	24.8	16.8	12.8
RL: dB	20	25	24.3	20.1	17.3	15.9

Operating Temp	-20 C to +60 C
Storage Temp	-20 C to +75 C
Installation Temp	0 C to + 60 C
Delay Skew	45ns/100m Max

Mechanical Properties:

Max. Recommended Pull Tension	25 lbs.
Min. Bend Radius (Install)	1.00"

Accessories:

Connectors: Jacks

AX101318	Gray
AX101319	Almond
AX101320	White
AX101321	Black
AX101322	Orange
AX101323	Red
AX101324	Yellow
AX101325	Green
AX101326	Blue
AX101327	Purple

Connectors: Plugs

32-6198UL	Cat 6
-----------	-------

Tools:

TL-135	110 Punch down tool
TL-114	Crimp Tool

Cable Assemblies:

WP-4236xx-3	3 ft. Replace xx with GY, BL, RD
WP-4236xx-7	7 ft. Replace xx with GY, BL, RD
WP-4236xx-10	10 ft. Replace xx with GY, BL, RD
WP-4236xx-15	15 ft. Replace xx with GY, BL, RD
WP-4236xx-25	25 ft. Replace xx with GY, BL, RD

Specification Issue Date: 4/09

This document is the property of West Penn Wire.
The information contained herein is considered
Proprietary and not to be reproduced by any means
Without written consent of West Penn Wire

Standard Lengths are 1000ft.
The Jacket is sequentially footmarked.
The information presented here is, to the best of our
knowledge, is true and accurate. However, since
conditions of use are beyond our control, all
recommendations or suggestions are presented
without guarantee or responsibility on our part. We
disclaim all liability in connection with the use of
information contained herein or otherwise.