



UC

English

Français

YID-W10

Wireless System for iPod
Système sans fil pour iPod

OWNER'S MANUAL
MODE D'EMPLOI

yAired™

Made for



iPod



iPhone

FCC INFORMATION (for US customers)

1. IMPORTANT NOTICE: DO NOT MODIFY THIS UNIT!

This product, when installed as indicated in the instructions contained in this manual, meets FCC requirements.

Modifications not expressly approved by Yamaha may void your authority, granted by the FCC, to use the product.

2. IMPORTANT: When connecting this product to accessories and/or another product use only high quality shielded cables. Cable/s supplied with this product MUST be used. Follow all installation instructions. Failure to follow instructions could void your FCC authorization to use this product in the USA.

3. NOTE: This product has been tested and found to comply with the requirements listed in FCC Regulations, Part 15 for Class "B" digital devices. Compliance with these requirements provides a reasonable level of assurance that your use of this product in a residential environment will not result in harmful interference with other electronic devices.

This equipment generates/uses radio frequencies and, if not installed and used according to the instructions found in the users manual, may cause interference harmful to the operation of other electronic devices.

Compliance with FCC regulations does not guarantee that interference will not occur in all installations. If this product is found to be the source of interference, which can be determined by turning the unit "OFF" and "ON", please try to eliminate the problem by using one of the following measures:

Relocate either this product or the device that is being affected by the interference.

Utilize power outlets that are on different branch (circuit breaker or fuse) circuits or install AC line filter/s.

In the case of radio or TV interference, relocate/reorient the antenna. If the antenna lead-in is 300 ohm ribbon lead, change the lead-in to coaxial type cable.

If these corrective measures do not produce satisfactory results, please contact the local retailer authorized to distribute this type of product. If you can not locate the appropriate retailer, please contact Yamaha Electronics Corp., USA 6660 Orangethorpe Ave., Buena Park, CA 90620.

The above statements apply ONLY to those products distributed by Yamaha Corporation of America or its subsidiaries.

This device complies with Part 15 of FCC Rules and RSS-Gen of IC Rules.

Operation is subject to the following two conditions:

- 1) this device may not cause interference, and
- 2) this device must accept any interference, including interference that may cause undesired operation of this device.

NOTICE

This equipment has been tested and found to comply with the limits for a Class B digital device, pursuant to part 15 of the FCC Rules. These limits are designed to provide reasonable protection against harmful interference in a residential installation.

This equipment generates, uses and can radiate radio frequency energy and, if not installed and used in accordance with the instructions, may cause harmful interference to radio communications. However, there is no guarantee that interference will not occur in a particular installation. If this equipment does cause harmful interference to radio or television reception, which can be determined by turning the equipment off and on, the user is encouraged to try to correct the interference by one or more of the following measures:

- Reorient or relocate the receiving antenna
- Increase the separation between the equipment and receiver.
- Connect the equipment into an outlet on a circuit different from that to which the receiver is connected.
- Consult the dealer or an experienced radio/TV technician for help.

This equipment complies with FCC/IC radiation exposure limits set forth for uncontrolled equipment and meets the FCC radio frequency (RF) Exposure Guidelines in Supplement C to OET65 and RSS-102 of the IC radio frequency (RF) Exposure rules. This equipment has very low levels of RF energy that it deemed to comply without maximum permissive exposure evaluation (MPE). But it is desirable that it should be installed and operated with at least 20 cm and more between the radiator and person's body (excluding extremities: hands, wrists, feet and ankles).

FCC WARNING

Change or modifications not expressly approved by the party responsible for compliance could void the user's authority to operate the equipment.

This transmitter must not be co-located or operated in conjunction with any other antenna or transmitter.

FOR CANADIAN CUSTOMERS

To prevent electric shock, match wide blade of plug to wide slot and fully insert.

This Class B digital apparatus complies with Canadian ICES-003.

Caution: Read this before operating this unit.

- 1 To assure the finest performance, please read this manual carefully. Keep it in a safe place for future reference.
- 2 Locate this unit away from other electrical appliances, motors, or transformers to avoid humming sounds.
- 3 Do not expose this unit to sudden temperature changes from cold to hot, and do not locate this unit in an environment with high humidity (i.e. a room with a humidifier) to prevent condensation inside this unit, which may cause an electrical shock, fire, damage to this unit, and/or personal injury.
- 4 Avoid installing this unit where foreign object may fall onto this unit and/or this unit may be exposed to liquid dripping or splashing. On the top of this unit, do not place:
 - Other components, as they may cause damage and/or discoloration on the surface of this unit.
 - Burning objects (i.e. candles), as they may cause fire, damage to this unit, and/or personal injury.
 - Containers with liquid in them, as they may fall and liquid may cause electrical shock to the user and/or damage to this unit.
- 5 Do not cover this unit with a newspaper, tablecloth, curtain, etc. in order not to obstruct heat radiation. If the temperature inside this unit rises, it may cause fire, damage to this unit, and/or personal injury.
- 6 Do not operate this unit upside-down. It may overheat, possibly causing damage.
- 7 Do not use force on switches, knobs and/or cords.
- 8 Do not clean this unit with chemical solvents; this might damage the finish. Use a clean, dry cloth.
- 9 Do not attempt to modify or fix this unit. Contact qualified Yamaha service personnel when any service is needed. The cabinet should never be opened for any reasons.
- 10 Be sure to read the “Troubleshooting” section on common operating errors before concluding that this unit is faulty.

WARNING

TO REDUCE THE RISK OF FIRE OR ELECTRIC SHOCK, DO NOT EXPOSE THIS UNIT TO RAIN OR MOISTURE.

Radio waves may affect electro-medical devices.

Do not use this unit near medical devices or inside medical facilities.

Do not use this unit within 22 cm (9 in) of persons with a heart pacemaker implant or defibrillator implant.

IMPORTANT

Please record the serial number of this unit in the space below.

MODEL:

Serial No.:

The serial number is located on the rear of the unit. Retain this Owner's Manual in a safe place for future reference.

This unit may affect radio waves of iPhone when iPhone is charged by using this unit. In addition, radio waves of this unit and iPhone may interfere with each other. If you have a problem with your telephone call, disconnect your iPhone from this unit.

We Want You Listening For A Lifetime



Yamaha and the Electronic Industries Association's Consumer Electronics Group want you to get the most out of your equipment by playing it at a safe level. One that lets the sound come through loud and clear without annoying blaring or distortion – and, most importantly, without affecting your sensitive hearing. Since hearing damage from loud sounds is often undetectable until it is too late, Yamaha and the Electronic Industries Association's Consumer Electronics Group recommend you to avoid prolonged exposure from excessive volume levels.

Introduction

YID-W10 is a wireless system designed for iPod/iPhone series. YID-W10 employs the Yamaha “yAired” technology to establish a wireless connection with another Yamaha dock-compatible component (hereinafter referred to as “Yamaha component”) that supports “yAired” and enables playback of the iPod/iPhone audio on your Yamaha component. For video, enjoy it on your iPod/iPhone display.

Also the receiver (YIR-W10) can be used for charging the iPod/iPhone, or to play music for an extended time.

Operation and function depend on your iPod/iPhone model and Yamaha component. Refer to the owner’s manuals supplied with your iPod/iPhone and Yamaha component.

This unit is compatible with iPod (5th generation), iPod classic, iPod nano, iPod touch, iPhone, iPhone 3G, iPhone 3GS (as of April 2010).

- Designed to dock iPod/iPhone with YID-W10 compatible Yamaha products.
- Please find the compatible Yamaha products through our website.
<http://www.yamaha.com/>

Yamaha yAired

Real-time uncompressed music transfer without sound degradation is realized by Yamaha original digital wireless transfer technology, yAired. You can also control system on/off and volume with the iPod/iPhone by yAired.

Included items

Check that you have received all of the following items.

Transmitter (YIT-W11TX)

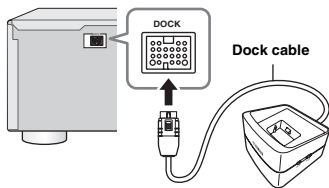


Receiver (YIR-W10)



1: Connection

- ① Turn off your Yamaha component and then disconnect its power cable from the AC outlet.
- ② Connect the dock cable to the Yamaha component.



Note

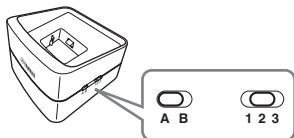
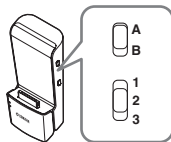
Be sure to connect the dock cable firmly. If the connection is loose, some noise may be output.

- ③ Connect the power cable to the AC outlet and then turn on your Yamaha component.

2: Group ID setting

Match the group IDs of the transmitter and the receiver.

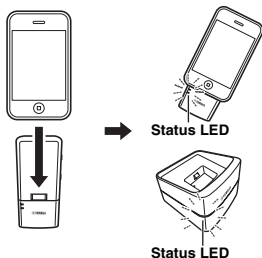
The default setting is A2.



3: Playback

① Connect your iPod/iPhone to the transmitter.

The green LED on the transmitter (YIT-W11TX) and blue LED on the receiver (YIR-W10) light up if a wireless connection between the transmitter and receiver is established.



② Start playback on your iPod/iPhone.

Operation and function depend on your iPod/iPhone model and Yamaha component. Refer to the owner's manuals supplied with your iPod/iPhone and Yamaha component.

Notes

- In case noises are output from the speaker, place the receiver away from your Yamaha component.
- The transmitter is powered by the battery of your iPod/iPhone. When your battery of iPod/iPhone becomes empty, charge your iPod/iPhone.



- The transmitter stops wireless communication automatically after a short time you stop iPod/iPhone playback.
- To disconnect the iPod/iPhone from the transmitter, pull it upward.

Transmitter LED status

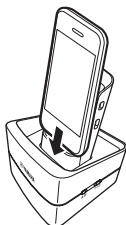
LED	Status
Lights up green	Wireless communication between the transmitter and receiver is established.
Flashes green once	Adjusting the volume level.
Flashes green continuously	Connection in progress, please wait.
Flashes red once	The volume of Yamaha component is set to maximum or minimum.
Flashes red for 2 seconds	An unsupported iPod is connected.
Flashes red continuously	Error occurs. Remove the iPod/iPhone from the transmitter, and connect again.
Flashes red 2 times continuously	The battery of the iPod/iPhone is low.
Off	An iPod/iPhone is not connected or wireless communication has not been established.

Receiver LED status

LED	Status
Lights up blue	Wireless communication between the transmitter and receiver is established.
Flashes blue once	Adjusting the volume level.
Flashes blue	Connection in progress, please wait.
Flashes blue rapidly	Error occurs. The receiver is in need of repair.
Off	An iPod/iPhone is not connected or wireless communication has not been established.

4: Battery charge

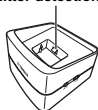
To charge your iPod/iPhone, connect it to the transmitter, and then station the transmitter with your iPod/iPhone onto the receiver.



Note

Do not push the transmitter detection switch hard.

Transmitter detection switch



Troubleshooting

If the unit does not function properly, first of all, check the firmware of your iPod/iPhone is the latest version. If it is the latest version, refer to the table below. If the problem you are experiencing is not listed below, or if the instruction below does not help, contact the nearest authorized Yamaha dealer or service center.

Transmitter LED	Problem	Cause	Remedy
Green: Off Red: Off	No sound.	No sound is output from your iPod/iPhone.	Playback your iPod/iPhone, or run the YouTube or other applications.
		Your iPod/iPhone is not connected to the transmitter firmly.	Reconnect your iPod/iPhone to the transmitter firmly.
		The battery of your iPod/iPhone is empty.	Charge your iPod/iPhone.
Green: flashes Red: Off	No sound.	The dock cable is not connected to your Yamaha component.	Connect the dock cable to your Yamaha component.
		The group IDs of the transmitter and receiver are set to the different value.	Match the group IDs.
		The power is not supplied to the receiver from your Yamaha component.	Change the setting of your Yamaha component referring to its owner's manual.

Transmitter LED	Problem	Cause	Remedy
Green: flashes Red: Off	The sound is interrupted.	There is a device (microwave oven, cordless phone, Wi-Fi, etc.) outputting signals in 2.4 GHz frequency band nearby.	Move YID-W10 away from the device.
		The signal from the transmitter is blocked by your body, metallic objects, or wall, etc.	Change the position of the transmitter to avoid the object blocking the signal.
		The position of the transmitter is too far from the receiver.	Move the transmitter closer to the receiver.
Green: flashes or lights up Red: flashes	No sound.	Communication error of your iPod/iPhone, and the transmitter.	Reconnect your iPod/iPhone to the transmitter firmly. If this status occurs frequently, disconnect your iPod/iPhone from the transmitter, restart it, and then reconnect firmly.
Green: flashes or lights up Red: flashes for a short time	Controlling volume on your iPod does not work.	Your iPod is recognized as an unsupported model.	Use an iPod supported by YID-W10. If your iPod is the supported model, reconnect it to the transmitter firmly. If this status occurs frequently, disconnect your iPod from the transmitter, restart it, and then reconnect firmly.
Green: flashes twice Red: Off	No sound.	Communication error of your iPod/iPhone, and the transmitter.	Reconnect your iPod/iPhone to the transmitter firmly. If this status occurs frequently, disconnect your iPod/iPhone from the transmitter, restart it, and then reconnect firmly.

Transmitter LED	Problem	Cause	Remedy
Green: lights up Red: Off	No sound	The volume is set to the minimum.	Set the volume properly.
		Your Yamaha component is turned off.	Turn on your Yamaha component.
		The input source of your Yamaha component is not set properly.	Set the input source properly.
		Earphones or other device are connected to your iPod/iPhone.	Disconnect earphones or other device.
	The volume of iPod/iPhone does not change when you operate the volume of your Yamaha component.	Wireless communications are established between this unit's transmitter and multiple "yAired" devices simultaneously.	Set the group IDs of the other "yAired" devices to the different value.
	Sound is output suddenly despite your iPod/iPhone is not connected to the transmitter.	Wireless communication is established between the receiver and another "yAired" device.	Set the group ID of another "yAired" device to the different value.
	Ring tone is output from your Yamaha component when your iPhone receives an incoming call.	Ring tone is output from your Yamaha component when your iPhone receives an incoming call.	If you do not want your Yamaha component to output ring tone, set your iPhone to the silent mode.
	The battery is not charged.	The battery charge function is not activated on your Yamaha component.	Change the setting of your Yamaha component referring to its owner's manual.
	The Wi-Fi communication is unstable when you are using YID-W10.	The signal from YID-W10 interferes with Wi-Fi communication.	Disconnect your iPod/iPhone from the transmitter, and then reconnect firmly after a while. If this situation occurs frequently, move YID-W10 away from the Wi-Fi components.

Specifications

Supported iPod (as of April 2010)

.... iPod (5th generation), iPod classic, iPod nano,
iPod touch

Supported iPhone (as of April 2010)

..... iPhone, iPhone 3G, iPhone 3GS

Frequency 2.4 GHz

Transmission Range Approx. 20m (66 ft)
(without interference)

Number of units which can be simultaneously
transmitted to (YIT-W11TX)

...Up to 7 units (depending on the circumstances)

Latency 12 ms

Power Consumption (Charging) 4 W

Power Consumption (No charge) Less than 1W

INPUT / OUTPUT DOCK

Dimensions (W x H x D)

YIT-W11TX 45.3 x 94 x 17.6 mm
(1-3/4 x 3-3/4 x 0-3/4 in)


YIR-W10 91 x 54 x 88 mm
(3-5/8 x 2-1/8 x 3-1/2 in)

Cable Length (YIR-W10) 1.2 m (3.9 ft)

Weight

YIT-W11TX 42 g (1.5 oz)

YIR-W10 260 g (9.0 oz)

The rating marking of “5 V  1.0 A” is marking
for the charge to iPod/iPhone.

* Specifications are subject to change without notice.

yAired™

The “yAired” and “yAired” are
trademarks of Yamaha Corporation.

iPhone, iPod, iPod classic, iPod nano and
iPod touch are trademarks of Apple Inc.,
registered in the U.S. and other countries.




“Made for iPod” and “Made for iPhone”
mean that an electronic accessory has been
designed to connect specifically to iPod or
iPhone, respectively, and has been certified
by the developer to meet Apple performance
standards.

Apple is not responsible for the operation of
this device or its compliance with safety and
regulatory standards.



© 2010 Yamaha Corporation

YAMAHA CORPORATION

Printed in China  WV30490