

Finally, a back up system You can believe in.

Surge Eliminator/Power Conditioner
Line Interactive 1000 VA



Protect your mission critical AV equipment with the new 1000 VA UPS Surge Eliminator.



Superior to standby UPS products, the SU-1000Li provides faster response, automatic voltage regulation, and battery backup during a brownout, blackout, surge, or power failure.

Unlike other UPS products, our SU-1000Li 1000 VA Line Interactive UPS is backed with SurgeX Advanced Series Mode® patented surge elimination technology to shield computer and AV equipment from catastrophic damage. The SU-1000Li also includes common mode and normal mode Impedance Tolerant® EMI/RFI filtering, and provides a sophisticated web browser-based interface to manage power settings, customize diagnostics, monitor multiple computers, and schedule shutdowns and restarts.

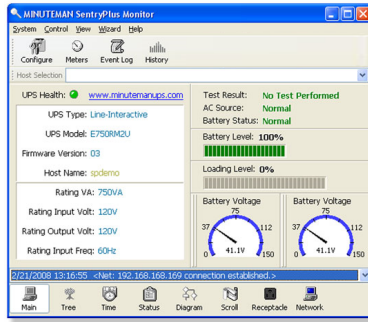
- Provides A-1-1 Certified fail safe protection from surges, spikes, blackouts, and brownouts.
- Automatic voltage regulation provides a stable AC source during less than optimal power conditions without constant use of internal batteries.
- Includes SentryPlus™ UPS power management and diagnostic software.
- Over/Under Voltage Protection
- Advanced Series Mode® surge elimination technology stops all surges up to 6,000 volts without producing harmful side effects such as ground contamination or common-mode disturbances, is superior to conventional MOV and MOV-Hybrid circuitry, and is completely non-sacrificial.
- Credenza Friendly-Only 10.5" deep!

FEATURES

- 2U Rack Mount
- 1000 VA Battery Backup
- Advanced Series Mode® Surge Elimination
- Impedance Tolerant® EMI/RFI Filter
- Automatic Voltage Regulation
- Over/Under Voltage Protection
- SentryPlus™ Power Management and Diagnostic Software
- USB port
- Self-test Circuit and Visual Indicator
- Receptacles:
2 UPS / 4 Surge Elimination
- 10 Year Warranty
- A-1-1 Certified
- RoHS Compliant
- Made in U.S.A.

SentryPlus™ Power Management and Diagnostic Software

- Plan a schedule to shutdown, restart, test UPS and control receptacles
- Customize programmable actions
- Set up notifications of user-defined power related events via pager, e-mail, audible alarm, network broadcast and SNMP trap
- View Real-time UPS data meters (voltage, frequency, loading percentage)
- Analyze power history and event records via software data and graphs
- Configure Multi-computer shutdown/wakeup through TCP/IP network
- Access remote monitoring, control and configuration through TCP/IP network
- Monitor and network multiple UPSs at a glance in a LAN
- Connect from either local or remote sites and Communicate to UPS using RS-232 or Universal Serial Bus (USB)



Technical Description

The SU-1000Li is a 1000 VA line interactive uninterruptible power supply, surge eliminator, and power conditioner in a magnetically shielded steel enclosure. It operates from 120 volts AC and has a 6-foot, grounded, 3-wire #14 line cord. It has 4 grounded AC receptacles and two of these provide battery back up protection. Overall dimensions are 3.5" H x 19.0" W x 10.5" D. Weight is 32.0 pounds.

The SU-1000Li has a load rating of 15 amps at 120 volts, a self-test circuit with visual indicator, and provides EMI/RFI filtering. It meets Federal Grade A, Class 1, Mode 1 guidelines for power line surge suppressors and withstands at least 1000 occurrences of surge pulse voltages, up to 6000 volts. SentryPlus™ auto shutdown and monitoring software is also included with SU-1000Li hardware.

The SurgeX Difference

SurgeX is the leading manufacturer of premium AC power conditioning products for the professional audio, video, broadcast, and multi-media marketplace. Our patented technology is built exclusively to properly protect ProAV equipment from AC surges and electrical transients that can disrupt sound quality and digital performance.

- **100% Fail Safe Protection**
- **A-1-1 Certified**
- **All SurgeX products are backed by an industry leading 10 Year Warranty.**

SPECIFICATIONS

Rack Size: 2U

Load Capacity: 1000VA / 600W

Back-Up Run Time: 4 Minute 700W Full Load, 10.4 Minute 350W Half Load

Batteries: 2, user replaceable

Ports: USB

Load Rating: 15 amps @ 120 volts

Power Requirement (no load): 35 watts (charging)
15 watts (charged)

Surge Let-Through Voltage (6000-volt surge): 0 volts

UL 1449 Adjunct Classification Test Results: 1000 surges, 6000 volts, 3000 amps, B3 pulse; Measured suppressed voltage: 170 volts; no failures.

Federal Guidelines: Grade A, Class 1, Mode 1 (CID A-A-55818)

EMI/RFI Filter, Normal Mode (50-ohm load): 40 dB @ 100 kHz; 50 dB @ 300 kHz; 50 dB @ 3 MHz; 50 dB @ 30 MHz

EMI/RFI Filter, Common Mode (50-ohm load): 18 dB @ 300 kHz; 30 dB @ 1 MHz; 50 dB @ 5 MHz; 50 dB @ 20 MHz

Maximum Applied Surge Voltage: 6000 volts*

Maximum Applied Surge Current: Unlimited, due to current limiting*

Maximum Applied Surge Energy: Unlimited, due to current limiting*

Endurance (C62.41-1991 Category B3 pulses): 1 kV>500,000; 3 kV>10,000; 6 kV>1000

Dimensions: 3.5" H x 19.0" W x 10.5" D
(8.9 x 48.3 x 26.7 cm)

Weight: 32.0 lbs (14.5 kg)

Temperature Range: 5° to 35° C

Humidity Range: 5% to 95% R.H., non-condensing

Agency Listings: ETL and cETL (UL 1449, 2nd edition; CSA C22.2 No.8-M1986, R2000)

* 1.2 x 50 μ s pulse, industry standard combination wave surge, as per IEEE C62.41.

** Specifications subject to change without notice.