



innovoxaudio.com

SLA Series –

SLA-4.1 tilt

formerly LA-440

DESCRIPTION

The **SLA-4.1 tilt** is a high output Frequency Shaded Line Array loudspeaker employing a ribbon HF driver and four 4" LF drivers within a very low profile enclosure. Its construction positions the HF driver with a 10° downward tilt, which is optimal for flat on-wall mounting of the loudspeaker above ear level.

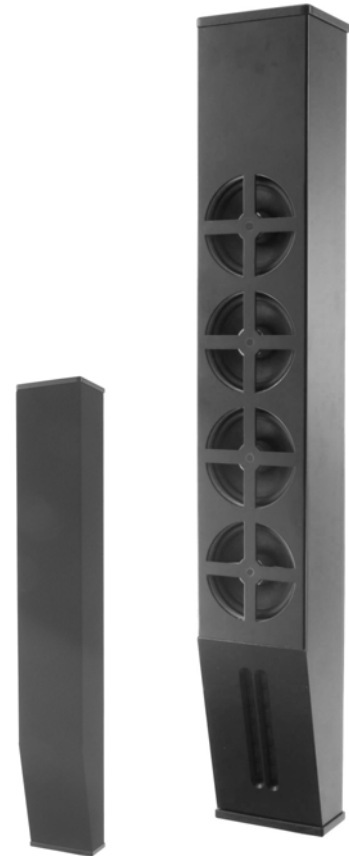
A proprietary filter circuit tilts the LF acoustic center down 10° to match the HF driver, while sequentially integrating drivers in the array to maintain pattern control below 1kHz. This ensures a smooth transition from line-source to point-source behavior at lower frequencies. The result is very flat response and uniform pattern control, yielding superior speech clarity and musical detail.

KEY FEATURES:

- maintains 25° pattern control below 1 kHz
- compact, low profile cross section
- 10° down angle complements flat wall mounting
- Frequency Shading optimizes pattern uniformity
- effective projection beyond 50 feet

APPLICATIONS:

- churches
- classrooms
- lecture halls
- presentation spaces



NOMINAL DATA

Frequency Response	120 – 20,000 Hz, ± 3 dB
Sensitivity	95 dB @ 2.83V / 1M
Impedance	4 Ω (70-volt available)
Power Handling	175 W long-term (AES-2)
Maximum Output	116 dB long-term, 122 dB peak
Nominal Coverage Angles	120° H x 25° V with 10° down angle
Dimensions	height: 30.00 " / 762 mm width: 4.63 " / 118 mm depth: 3.38 " / 86 mm
Net Weight	10.4 lbs / 4.7 kg
Shipping Weight	13.0 lbs / 5.9 kg

DESCRIPTIVE DATA

System Configuration	Compact frequency-shaded line array
Components & Loading	(4) 4" LF; (1) ribbon HF
Recommended High-Pass	4 th order Butterworth @ 100 Hz
Enclosure Type	Sealed enclosure
Enclosure Material	Steel, with composite endcaps
Finish	Black or White standard, with custom colors available
Connectors	NL4 and dual binding head screws
Suspension Hardware	(6) ¼ -20 threaded points on back & endcaps; OmniMount 30.0 Series compatible (2 slotted L-brackets included)
Grille	Integral, fabric wrapped

West Coast Office

1155-C Arnold Drive, #231
Martinez CA 94553
ph: **925 372-8156**
email: orders@innovoxaudio.com

Central Office

296 North Pascal Street
Saint Paul MN 55104
ph: **612 379-0100**
email: sales@innovoxaudio.com

innovoxaudio.com