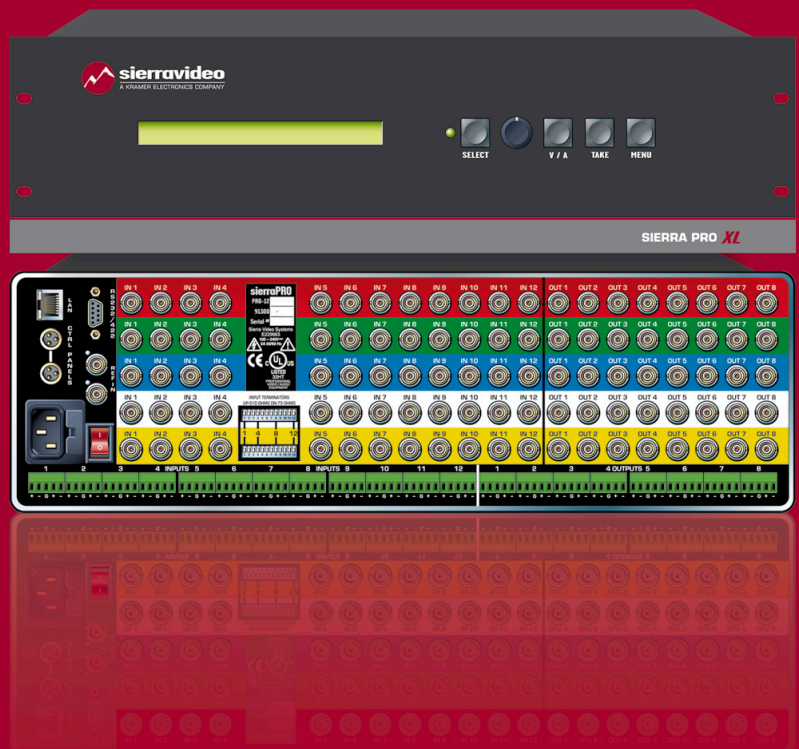




# SIERRA Pro XL™ SIERRA PRO™ ROUTING SWITCHERS



WIDEBAND VIDEO ROUTING SWITCHERS  
FOR ROUTING RGBHV, RGBS, COMPONENT  
VIDEO & S-VIDEO SIGNALS IN PROFESSIONAL  
PRESENTATION ENVIRONMENTS



**SIERRA Pro XL™**

**SIERRA PRO™**

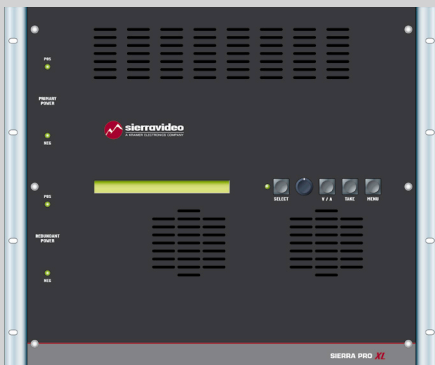
ROUTING SWITCHERS

# Sierra Pro XL and Sierra PRO Routing Switchers

## SIERRA Pro XL

450MHz Wideband Routing Switchers with RS-232, RS-485 & Ethernet Control

Sierra Video's premiere line of high bandwidth routing switchers provides top-of-the-line performance in the most demanding presentation environments. Our original Sierra PRO routing switchers have continuously offered high bandwidth RGBHV signal routing in strenuous video applications for years, and our Sierra Pro XL routing switchers expand on the family's abilities, offering increased bandwidth and control communication options. With incredibly flat response and Matrix Mapping capacity, Sierra Pro XL and Sierra PRO routing switchers are an outstanding combination of value and performance.



### VIDEO FEATURES

**High Bandwidth** – 450MHz @ -3dB fully loaded with Sierra Pro XL. 400MHz @-3dB with Sierra PRO. Proven flat response at high bandwidths provides optimal performance.

**Low Crosstalk** – -80dB @ 1MHz, -47dB @ 100MHz, -30dB @ 150MHz.

**Room Grouping Capability** - Several inputs may be grouped and operated independently of other input groups on the routers. This allows one router to be used for multiple "rooms" where the control system for each room will address only the inputs and outputs assigned to that room.

**Matrix Mapping™ Universal Breakaway Switching** - Allows switching of every level of every input of the router independently. Switch a single level or any combination of levels of the R, G, B, H, V, left audio and right audio levels of any input. For example, input a composite video signal on the R level of input one and an s-Video (Y/C) signal on the G and B levels of input one and switch only the composite video signal on the R level, switch only the s-Video Y and C signals on the G and B levels, or switch all three levels together.

## SIERRA PRO

400MHz Wideband Routing Switchers with RS-232 & RS-485 Control

### MATRIX SIZES

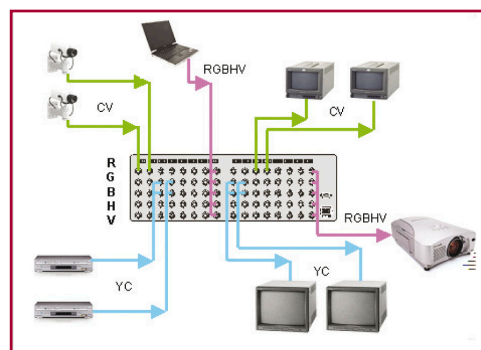
8x4 12x4 16x8 32x16

8x8 12x8 16x16 32x32

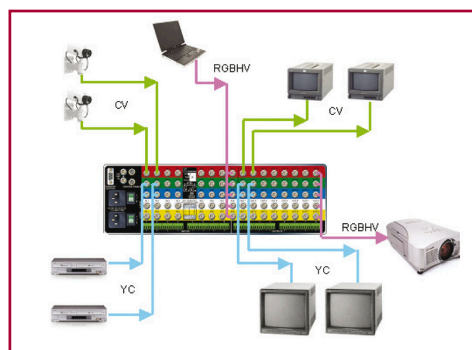
### FORMATS

Each frame size can be ordered as a 5-channel (RGBHV) system or a 3-channel (RGB) system with or without balanced stereo audio, or it can be ordered with high bandwidth video boards in place of the H and V boards so that video can be input into all channels (or levels) of the routing switcher.

### MATRIX MAPPING UNIVERSAL BREAKAWAY SWITCHING



Competitive Models



Sierra Pro Models

## SYNC FEATURES

---

**Sync Reporting** - Through the front panel or RS-232, the routing switcher can capture and report the input sync rates for each input signal.

**Input Detection** - 200mV. Re-shapes and re-squares sync to output correct TTL level.

**Selectable Termination** - 510 or 75 Ohm (each input).

**Genlock Input** - Looping internal sync input for vertical interval switching.

## AUDIO FEATURES

---

**Audio Type** - Balanced or unbalanced stereo on terminal blocks.

**Input (Level) Adjustment Capability** - - 8dB to + 20.5dB.

**Output (Volume) Adjustment Capability** - Mute, - 59.5dB to + 15dB.

**No Zipper Effect** - Sierra Pro XL and Sierra PRO routing switchers employ zero crossover chip technology which eliminates the annoying "zipper sound effect" associated with digital volume controls.

**Audio Mute Capability.**

**Crosstalk** - < - 80dB @ 1kHz (unity gain), < - 60dB @ 10kHz (unity gain).

**Dynamic Range** - 96dB (20-20kHz unweighted) (unity gain).

## COMPREHENSIVE CONTROL OPTIONS

---

**IP (Ethernet Control) with Sierra Pro XL** - Via standard TCP/IP socket connection, Mac or PC.

**Front Panel Control** - Local control with 80 character LCD readout.

**RS-232 & RS-422.**

**RS-485 For Optional Control Panels.**

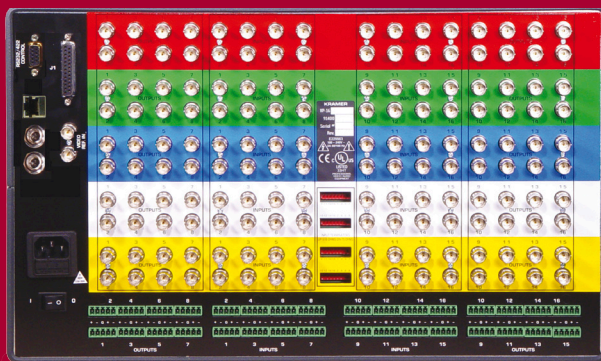
**TyLinX™ Router Control Software** - Advanced, customizable GUI control interface.

**Remote Control Panels** - Programmable, Single Bus, and XY panels optional.

## REDUNDANT POWER SUPPLY

---

Optional on all 16x16 and 16x8 models. Standard on all 32x32 and 32x16 models.



Sierra Pro 1616V5xl



Sierra Pro 3232V5xl

MODEL	FORMAT	INPUTS	OUTPUTS	SIZE	HEIGHT	DESCRIPTION
<b>Sierra Pro XL - 450MHz Wideband Routing Switchers with RS-232, RS-485 &amp; IP (Ethernet) Control</b>						
<b>84V3xl</b>	RGB	8	4	3RU	5.25"	8x4 3-channel wideband video ▪ 450MHz ▪ IP Control
<b>84V3Sxl</b>	RGB	8	4	3RU	5.25"	8x4 3-channel wideband video + stereo audio ▪ 450MHz ▪ IP Control
<b>84V5xl</b>	RGB + HV	8	4	3RU	5.25"	8x4 3-channel wideband video, 2 sync channels ▪ 450MHz ▪ IP Control
<b>84V5Sxl</b>	RGB + HV	8	4	3RU	5.25"	8x4 3-channel wideband video, 2 sync channels + stereo audio ▪ 450MHz ▪ IP Control
<b>84V5Vxl</b>	5-level video	8	4	3RU	5.25"	8x4 Custom format 5-channel (no sync) wideband video ▪ 450MHz ▪ IP Control
<b>84V5VSxl</b>	5-level video		4	3RU	5.25"	8x4 Custom format 5-channel (no sync) wideband video + stereo audio ▪ 450MHz ▪ IP Control
<b>88V3xl</b>	RGB	8	8	3RU	5.25"	8x8 3-channel wideband video ▪ 450MHz ▪ IP Control
<b>88V3Sxl</b>	RGB	8	8	3RU	5.25"	8x8 3-channel wideband video + stereo audio ▪ 450MHz ▪ IP Control
<b>88V5xl</b>	RGB + HV	8	8	3RU	5.25"	8x8 3-channel wideband video, 2 sync channels ▪ 450MHz ▪ IP Control
<b>88V5Sxl</b>	RGB + HV	8	8	3RU	5.25"	8x8 3-channel wideband video, 2 sync channels + stereo audio ▪ 450MHz ▪ IP Control
<b>88V5Vxl</b>	5-level video	8	8	3RU	5.25"	8x8 Custom format 5-channel (no sync) wideband video ▪ 450MHz ▪ IP Control
<b>88V5VSxl</b>	5-level video	8	8	3RU	5.25"	8x8 Custom format 5-channel (no sync) wideband video + stereo audio ▪ 450MHz ▪ IP Control
<b>1204V3xl</b>	RGB	12	4	3RU	5.25"	12x4 3-channel wideband video ▪ 450MHz ▪ IP Control
<b>1204V3Sxl</b>	RGB	12	4	3RU	5.25"	12x4 3-channel wideband video + stereo audio ▪ 450MHz ▪ IP Control
<b>1204V5xl</b>	RGB + HV	12	4	3RU	5.25"	12x4 3-channel wideband video, 2 sync channels ▪ 450MHz ▪ IP Control
<b>1204V5Sxl</b>	RGB + HV	12	4	3RU	5.25"	12x4 3-channel wideband video, 2 sync channels + stereo audio ▪ 450MHz ▪ IP Control
<b>1204V5Vxl</b>	5-level video	12	4	3RU	5.25"	12x4 Custom format 5-channel (no sync) wideband video ▪ 450MHz ▪ IP Control
<b>1204V5VSxl</b>	5-level video	12	4	3RU	5.25"	12x4 Custom format 5-channel (no sync) wideband video + stereo audio ▪ 450MHz ▪ IP Control
<b>1208V3xl</b>	RGB	12	8	3RU	5.25"	12x8 3-channel wideband video ▪ 450MHz ▪ IP Control
<b>1208V3Sxl</b>	RGB	12	8	3RU	5.25"	12x8 3-channel wideband video + stereo audio ▪ 450MHz ▪ IP Control
<b>1208V5xl</b>	RGB + HV	12	8	3RU	5.25"	12x8 3-channel wideband video, 2 sync channels ▪ 450MHz ▪ IP Control
<b>1208V5Sxl</b>	RGB + HV	12	8	3RU	5.25"	12x8 3-channel wideband video, 2 sync channels + stereo audio ▪ 450MHz ▪ IP Control
<b>1208V5Vxl</b>	5-level video	12	8	3RU	5.25"	12x8 Custom format 5-channel (no sync) wideband video ▪ 450MHz ▪ IP Control
<b>1208V5VSxl</b>	5-level video	12	8	3RU	5.25"	12x8 Custom format 5-channel (no sync) wideband video + stereo audio ▪ 450MHz ▪ IP Control

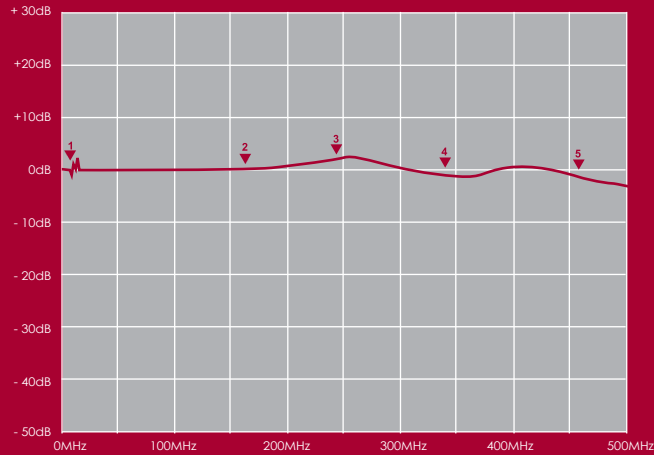
MODEL	FORMAT	INPUTS	OUTPUTS	SIZE	HEIGHT	DESCRIPTION
<b>Sierra Pro XL - 450MHz Wideband Routing Switchers with RS-232, RS-485 &amp; IP (Ethernet) Control (continued)</b>						
1608V3xl	RGB	16	8	6RU	10.5"	16x8 3-channel wideband video ▪ 450MHz ▪ IP Control ▪ Redundant power supply optional
1608V3Sxl	RGB	16	8	6RU	10.5"	16x8 3-channel wideband video + stereo audio ▪ 450MHz ▪ IP Control ▪ Redundant power supply optional
1608V5xl	RGB + HV	16	8	6RU	10.5"	16x8 3-channel wideband video, 2 sync channels ▪ 450MHz ▪ IP Control ▪ Redundant power supply optional
1608V5Sxl	RGB + HV	16	8	6RU	10.5"	16x8 3-channel wideband video, 2 sync channels + stereo audio ▪ 450MHz ▪ IP Control ▪ Redundant power supply optional
1608V5Vxl	5-level video	16	8	6RU	10.5"	16x8 Custom format 5-channel (no sync) wideband video ▪ 450MHz ▪ IP Control ▪ Redundant power supply optional
1608V5VSxl	5-level video	16	8	6RU	10.5"	16x8 Custom format 5-channel (no sync) wideband video + stereo audio ▪ 450MHz ▪ IP Control ▪ Redundant power supply optional
1616V3xl	RGB	16	16	6RU	10.5"	16x16 3-channel wideband video ▪ 450MHz ▪ IP Control ▪ Redundant power supply optional
1616V3Sxl	RGB	16	16	6RU	10.5"	16x16 3-channel wideband video + stereo audio ▪ 450MHz ▪ IP Control ▪ Redundant power supply optional
1616V5xl	RGB + HV	16	16	6RU	10.5"	16x16 3-channel wideband video, 2 sync channels ▪ 450MHz ▪ IP Control ▪ Redundant power supply optional
1616V5Sxl	RGB + HV	16	16	6RU	10.5"	16x16 3-channel wideband video, 2 sync channels + stereo audio ▪ 450MHz ▪ IP Control ▪ Redundant power supply optional
1616V5Vxl	5-level video	16	16	6RU	10.5"	16x16 Custom format 5-channel (no sync) wideband video ▪ 450MHz ▪ IP Control ▪ Redundant power supply optional
1616V5VSxl	5-level video	16	16	6RU	10.5"	16x16 Custom format 5-channel (no sync) wideband video + stereo audio ▪ 450MHz ▪ IP Control ▪ Redundant power supply optional
3216Sxl	Stereo Audio	32	16	4RU	7"	32x16 stereo audio. Companion units for 3216 video frames, not stand-alone units. ▪ IP Control ▪ Redundant power supply standard
3216V3xl	RGB	32	16	9RU	15.75"	32x16 3-channel wideband video ▪ 450MHz ▪ IP Control ▪ Redundant power supply standard
3216V5xl	RGB + HV	32	16	9RU	15.75"	32x16 3-channel wideband video, 2 sync channels ▪ 450MHz ▪ IP Control ▪ Redundant power supply standard
3216V5Vxl	5-level video	32	16	9RU	15.75"	32x16 Custom format 5-channel (no sync) wideband video ▪ 450MHz ▪ IP Control ▪ Redundant power supply standard
3232Sxl	Stereo Audio	32	32	4RU	7"	32x32 stereo audio. Companion units for 3216 video frames, not stand-alone units. ▪ IP Control ▪ Redundant power supply standard
3232V3xl	RGB	32	32	9RU	15.75"	32x32 3-channel wideband video ▪ 450MHz ▪ IP Control ▪ Redundant power supply standard
3232V5xl	RGB + HV	32	32	9RU	15.75"	32x32 3-channel wideband video, 2 sync channels ▪ 450MHz ▪ IP Control ▪ Redundant power supply standard
3232V5Vxl	5-level video	32	32	9RU	15.75"	32x32 Custom format 5-channel (no sync) wideband video ▪ 450MHz ▪ IP Control ▪ Redundant power supply standard

MODEL	FORMAT	INPUTS	OUTPUTS	SIZE	HEIGHT	DESCRIPTION
<b>Sierra PRO - 400MHz Wideband Routing Switchers with RS-232 &amp; RS-485 Control</b>						
<b>84V3</b>	RGB	8	4	3RU	5.25"	8x4 3-channel wideband video ▪ 400MHz
<b>84V3S</b>	RGB	8	4	3RU	5.25"	8x4 3-channel wideband video + stereo audio ▪ 400MHz
<b>84V5</b>	RGB + HV	8	4	3RU	5.25"	8x4 3-channel wideband video, 2 sync channels ▪ 400MHz
<b>84V5S</b>	RGB + HV	8	4	3RU	5.25"	8x4 3-channel wideband video, 2 sync channels + stereo audio ▪ 400MHz
<b>84V5V</b>	5-level video	8	4	3RU	5.25"	8x4 Custom format 5-channel (no sync) wideband video ▪ 400MHz
<b>84V5VS</b>	5-level video	8	4	3RU	5.25"	8x4 Custom format 5-channel (no sync) wideband video + stereo audio ▪ 400MHz
<b>88V3</b>	RGB	8	8	3RU	5.25"	8x8 3-channel wideband video ▪ 400MHz
<b>88V3S</b>	RGB	8	8	3RU	5.25"	8x8 3-channel wideband video + stereo audio ▪ 400MHz
<b>88V5</b>	RGB + HV	8	8	3RU	5.25"	8x8 3-channel wideband video, 2 sync channels ▪ 400MHz
<b>88V5S</b>	RGB + HV	8	8	3RU	5.25"	8x8 3-channel wideband video, 2 sync channels + stereo audio ▪ 400MHz
<b>88V5V</b>	5-level video	8	8	3RU	5.25"	8x8 Custom format 5-channel (no sync) wideband video ▪ 400MHz
<b>88V5VS</b>	5-level video	8	8	3RU	5.25"	8x8 Custom format 5-channel (no sync) wideband video + stereo audio ▪ 400MHz
<b>1204V3</b>	RGB	12	4	3RU	5.25"	12x4 3-channel wideband video + stereo audio ▪ 400MHz
<b>1204V3S</b>	RGB	12	4	3RU	5.25"	12x4 3-channel wideband video, 2 sync channels ▪ 400MHz
<b>1204V5</b>	RGB + HV	12	4	3RU	5.25"	12x4 3-channel wideband video, 2 sync channels + stereo audio ▪ 400MHz
<b>1204V5S</b>	RGB + HV	12	4	3RU	5.25"	12x4 Custom format 5-channel (no sync) wideband video ▪ 400MHz
<b>1204V5V</b>	5-level video	12	4	3RU	5.25"	12x4 Custom format 5-channel (no sync) wideband video + stereo audio ▪ 400MHz
<b>1204V5VS</b>	5-level video	12	4	3RU	5.25"	12x8 3-channel wideband video ▪ 400MHz
<b>1208V3</b>	RGB	12	8	3RU	5.25"	12x8 3-channel wideband video ▪ 400MHz
<b>1208V3S</b>	RGB	12	8	3RU	5.25"	12x8 3-channel wideband video + stereo audio ▪ 400MHz
<b>1208V5</b>	RGB + HV	12	8	3RU	5.25"	12x8 3-channel wideband video, 2 sync channels ▪ 400MHz
<b>1208V5S</b>	RGB + HV	12	8	3RU	5.25"	12x8 3-channel wideband video, 2 sync channels + stereo audio ▪ 400MHz
<b>1208V5V</b>	5-level video	12	8	3RU	5.25"	12x8 Custom format 5-channel (no sync) wideband video ▪ 400MHz
<b>1208V5VS</b>	5-level video	12	8	3RU	5.25"	12x8 Custom format 5-channel (no sync) wideband video + stereo audio ▪ 400MHz

MODEL	FORMAT	INPUTS	OUTPUTS	SIZE	HEIGHT	DESCRIPTION
<b>Sierra PRO - 400MHz Wideband Routing Switchers with RS-232 &amp; RS-485 Control (continued)</b>						
<b>1608V3</b>	RGB	16	8	6RU	10.5"	16x8 3-channel wideband video ▪ 400MHz ▪ Redundant power supply optional
<b>1608V3S</b>	RGB	16	8	6RU	10.5"	16x8 3-channel wideband video + stereo audio ▪ 400MHz ▪ Redundant power supply optional
<b>1608V5</b>	RGB + HV	16	8	6RU	10.5"	16x8 3-channel wideband video, 2 sync channels ▪ 400MHz ▪ Redundant power supply optional
<b>1608V5S</b>	RGB + HV	16	8	6RU	10.5"	16x8 3-channel wideband video, 2 sync channels + stereo audio ▪ 400MHz ▪ Redundant power supply optional
<b>1608V5V</b>	5-level video	16	8	6RU	10.5"	16x8 Custom format 5-channel (no sync) wideband video ▪ 400MHz ▪ Redundant power supply optional
<b>1608V5VS</b>	5-level video	16	8	6RU	10.5"	16x8 Custom format 5-channel (no sync) wideband video + stereo audio ▪ 400MHz ▪ Redundant power supply optional
<b>1616V3</b>	RGB	16	16	6RU	10.5"	16x16 3-channel wideband video ▪ 400MHz ▪ Redundant power supply optional
<b>1616V3S</b>	RGB	16	16	6RU	10.5"	16x16 3-channel wideband video + stereo audio ▪ 400MHz ▪ Redundant power supply optional
<b>1616V5</b>	RGB + HV	16	16	6RU	10.5"	16x16 3-channel wideband video, 2 sync channels ▪ 400MHz ▪ Redundant power supply optional
<b>1616V5S</b>	RGB + HV	16	16	6RU	10.5"	16x16 3-channel wideband video, 2 sync channels + stereo audio ▪ 400MHz ▪ Redundant power supply optional
<b>1616V5V</b>	5-level video	16	16	6RU	10.5"	16x16 Custom format 5-channel (no sync) wideband video ▪ 400MHz ▪ Redundant power supply optional
<b>1616V5VS</b>	5-level video	16	16	6RU	10.5"	16x16 Custom format 5-channel (no sync) wideband video + stereo audio ▪ 400MHz ▪ Redundant power supply optional
<b>3216S</b>	Stereo Audio	32	16	4RU	7"	32x16 stereo audio. Companion units for 3216 video frames, not stand-alone units. ▪ Redundant power supply standard
<b>3216V3</b>	RGB	32	16	9RU	15.75"	32x16 3-channel wideband video ▪ 400MHz ▪ Redundant power supply standard
<b>3216V5</b>	RGB + HV	32	16	9RU	15.75"	32x16 3-channel wideband video, 2 sync channels ▪ 400MHz ▪ Redundant power supply standard
<b>3216V5V</b>	5-level video	32	16	9RU	15.75"	32x16 Custom format 5-channel (no sync) wideband video ▪ 400MHz ▪ Redundant power supply standard
<b>3232S</b>	Stereo Audio	32	32	4RU	7"	32x32 stereo audio. Companion units for 3216 video frames, not stand-alone units. ▪ Redundant power supply standard
<b>3232V3</b>	RGB	32	32	9RU	15.75"	32x32 3-channel wideband video ▪ 400MHz ▪ Redundant power supply standard
<b>3232V5</b>	RGB + HV	32	32	9RU	15.75"	32x32 3-channel wideband video, 2 sync channels ▪ 400MHz ▪ Redundant power supply standard
<b>3232V5V</b>	5-level video	32	32	9RU	15.75"	32x32 Custom format 5-channel (no sync) wideband video ▪ 400MHz ▪ Redundant power supply standard



### INCREDIBLY FLAT RESPONSE PERFORMANCE



MARK	FREQ (MHz)	FROM MARK
1	3	0.0dB
2	163	+ 0.5dB
3	245	+ 2.3dB
4	341	- 0.6dB
5	453	- 3.0dB

(Actual measurement of Sierra Pro XL video board.)

## WIDEBAND VIDEO

### BANDWIDTH

**Sierra Pro XL** 450MHz @ - 3dB

**Sierra PRO** 400MHz @ -3dB

### VIDEO GAIN

Unity

### CROSSTALK

- 80dB @ 1MHz  
 - 47dB @ 100MHz  
 - 30dB @ 150MHz

### SWITCHING SPEED

Deterministic

### INPUT

#### VIDEO LEVEL

0.2V to 5Vp-p

#### IMPEDANCE

75 Ohm

#### RETURN LOSS

< - 30dB @ 5MHz

#### CONNECTOR TYPE

BNC

### OUTPUT

#### VIDEO LEVEL

0.2V to 5Vp-p

#### IMPEDANCE

75 Ohm

#### RETURN LOSS

< - 30dB @ 5MHz

#### CONNECTOR TYPE

BNC

## ANALOG AUDIO

---

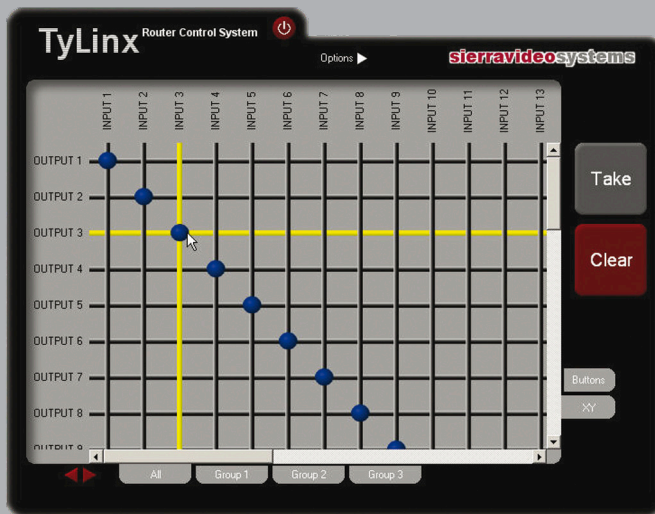
INPUT ADJUST RANGE	+20.5dB to -8dB
OUTPUT ADJUST RANGE	+15dB to -59.5dB and fully off (MUTE)
FREQUENCY RESPONSE	20Hz to 20kHz +/- 0.5dB (typical - 3dB @ 120kHz) (unity gain)
DYNAMIC RANGE	96dB (20-20kHz unweighted) (unity gain)
CROSSTALK (ALL INPUTS HOSTILE)	< - 80dB @ 1kHz (unity gain); < - 60dB @ 10kHz (unity gain)
IM & THD (20 TO 20kHz)	THD: < 0.025% (20Hz - 20kHz @ + 4dBu) (unity gain) IM: < 0.025 SMPTE-DIN @ + 4dBu (unity gain) < 0.01% CCIF @ + 16dBu (unity gain)
<b>INPUT</b>	
MAX. SOURCE LEVEL	+ 24dBu
IMPEDANCE	> 20k
CONNECTOR TYPE	5 pin terminal block for balanced or unbalanced operation
<b>OUTPUT</b>	
MAX. SOURCE LEVEL	+ 24dBu balanced
IMPEDANCE	+18dBu unbalanced
CONNECTOR TYPE	5 pin terminal block for balanced or unbalanced operation
<b>CONTROL</b>	
SERIAL	General Purpose 9 pin-D, each switchable RS-232 or RS-422 2 on 32x32 models, 1 on all others 9600, 38400, 115200 baud
PROTOCOLS	SVS host, simple Kramer, and select others
ETHERNET (Sierra Pro XL only)	10/100 Base-T, full duplex, RJ-45 connector
PROTOCOLS	ARP, ICMP, TCP/IP, Telnet, HTTP
WEB SERVER	For control
CONTROL PANELS	Supports SCP programmable control panels, XY & single bus control panels
<b>GENERAL</b>	
<b>RACK UNIT SIZE/FRAME</b>	
8x & 12x	3RU
16x	6RU
32x	Video only 9RU
32x	Audio only 4RU
<b>DIMENSIONS</b>	
8x & 12x	19"w x 5.25"h x 19"d
16x	19"w x 10.5"h x 19"d
32x VIDEO ONLY	19"w x 15.75"h x 19"d
32x AUDIO ONLY	19"w x 7"h x 19"d
	Mounts in standard 19" rack Depth measurements do not include front panel hardware or rear cabling
POWER	90VAC - >240 VAC 50/60HZ (<150 Watts) auto-detecting
REDUNDANT POWER SUPPLY	Optional in Series 16, standard in Series 32
STORAGE TEMPERATURE	-40° to +150° F
OPERATING TEMPERATURE	30° to 100° F ambient
HUMIDITY	10% to 90 % non-condensing
WARRANTY	7 Years

# Control Panels and Software

OUR OPTIONS ARE OUR STRENGTH

In addition to RS-232 and RS-485, Sierra Video offers a full line of programmable and single-bus control panels plus our TyLinX control software.

## TyLinX CONTROL SOFTWARE



## TyLinX CONTROL SOFTWARE

With our TyLinX™ Router Control Software, Sierra Video leaps ahead of the competition with extraordinarily intuitive and user-friendly router control. TyLinX utilizes a window-based graphical user interface to provide completely flexible control options. The software allows users to virtually recreate their routing systems on the desktop, defining sources and destinations, signal formats and cabling. TyLinX recognizes sources and destinations with compatible signal formats to guide routing choices. Customizable skin features, including icon-based labeling and classic Button Per Source and XY Panel views, allow the user to work in a truly personalized control environment.

### FEATURES

- Windows™ & Mac™ compatible
- Multiple routing switcher support
- Automatically retrieves source and destination names from the router
- Records and stores routing commands for routine routing requirements
- Virtual Room Grouping allows each user to create custom "views" for their individual requirements
- Ethernet (IP) or RS-232 serial communication

## REMOTE CONTROL PANELS

The SCP Series of programmable control panels features tremendous flexibility in external routing switcher control. The series has an on-board microprocessor which is combined with an effective I<sup>2</sup>C bus architecture to provide customers with a multitude of button configurations resulting in the most powerful user-definable line of control panels the industry has to offer. SCP Series panels are programmed using our own G.R.I.P.<sup>™</sup> Graphical Router Interface Program, providing error-free serial communication with our routing switchers.

Sierra Video also offers a complete array of convenient and simple Single-Bus, Button Per Source and XY panels for all our product families.



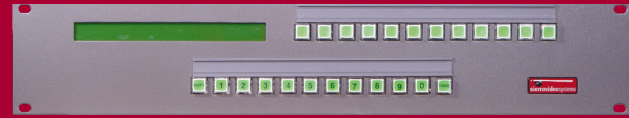
SCP-112



SCP-240



SCP-150



SCP-224



SCP-132

### Sierra Video Control Panels and Accessories

MODEL	PART NUMBER	SIZE	DESCRIPTION
<b>CONTROL PANELS</b>			
SCP-20	804020	Desktop	Programmable Desktop Control Panel
SCP-112	804112	1RU	Basic Programmable Control Panel
SCP-132	804132	1RU	Programmable Push Button w/ Rotary Control Panel
SCP-150	804150	1RU	Programmable Push Button Control Panel
SCP-224	804224	2RU	Advanced Programmable Control Panel
SCP-240	804240	2RU	Multi-Bus/Multi-Level Programmable Control Panel
SINGLE BUS	804047	1RU	16 x 1 Single Bus LED Remote Control Panel
XY	804048	1RU	16 x 16 XY LED Remote Control Panel
XY	804148	2RU	16 x 16 XY LED Remote Control Panel
SINGLE BUS	804014	1RU	32 x 1 Single Bus LED Remote Control Panel
SINGLE BUS	804348	2RU	32 x 1 Single Bus LED Remote Control Panel
XY	804015	2RU	32 x 32 XY LED Remote Control Panel
<b>CONTROL SOFTWARE</b>			
TyLinX	N/A	N/A	TyLinX Router Control Software
G.R.I.P.	N/A	N/A	G.R.I.P. Router Configuration Software
<b>ACCESSORIES</b>			
CABLES	AC20103	1m	Control Panel Cable, shielded pair
CABLES	AC20303	3m	Control Panel Cable, shielded pair
CABLES	AC21503	15m	Control Panel Cable, shielded pair
CONNECTORS	AC70001	N/A	Connector kit, 2 ea. mini-XLR (Switchcraft TA3F or equal)
CONNECTORS	AC70002	N/A	Connector kit, 10 ea. mini-XLR (Switchcraft TA3F or equal)
CONNECTORS	AC70003	N/A	Cable kit, 10 ea. mini-XLR connectors w/150m. shielded pair

# Reliable Products, Expert Support

For over two decades, Sierra Video has been assisting customers and providing solutions for almost any signal routing application imaginable. Our outstanding Customer Service and Technical Support teams are industry experts, skilled at answering your questions and optimizing your systems. Call direct during business hours and speak with a Technical Support Engineer, or take advantage of our After-Hours Technical Service: check our website for details. Technical manuals and online help are also available 24-hours a day at [www.sierravideo.com](http://www.sierravideo.com).



Whether you need immediate on-site guidance or have repair questions, contact the best real-time customer service in the business. You can reach our Customer Service Department from 8 A.M. to 5 P.M. Pacific, Monday through Friday, or access 24-hour online support: [www.sierravideo.com](http://www.sierravideo.com).

## SEVEN-YEAR WARRANTY

---



Routing switchers are the core of your system - "glueware" that is often taken for granted. In today's demanding video environment, you need to know that the backbone of your system will keep on working. When choosing a routing Switcher, it is important that you discuss your requirements with a knowledgeable sales staff and identify the company's ability to provide long-term support. Be sure to make the right choice! Sierra Video is proud to offer a Seven-Year Warranty on most of our products. We've offered this warranty for two decades and stand behind our quality products.

We have been successful because we believe in providing quality products that don't come back, to customers who do.

## FUTURE EXPANSION/INVESTMENT PROTECTION

---

With Sierra Video, you can maximize the impact of your investment by adding or exchanging systems as your needs grow. Our routing systems are designed to expand with you, either by adding modules to your current system or using our Trade In – Trade Up™ Routing Switcher Exchange Program. Choose from a variety of frames and modular combinations that meet your needs. If your system is a single frame all-in-one solution, simply send it back, and we will either modify it by adding new modules or exchange the system entirely, based on your upgrade needs.

Additionally, Sierra Video's excellent Trade In – Trade Up Routing Switcher Exchange Program allows a generous credit for a customer's entire system when it is traded for a larger Sierra Video routing switcher. Let us know what your needs are and we will make every effort to accommodate you.



**sierravideo**  
A KRAMER ELECTRONICS COMPANY

## SIERRA VIDEO HEADQUARTERS

PO Box 2462 Grass Valley, CA, 95945, USA

### Sales Outside the US and Canada:

Tel: (530) 478-1000  
Fax: (530) 478-1105

### Sales Inside the US and Canada:

Tel: (888) 886-8875  
Fax: (530) 478-1700

### Tech Support – Worldwide:

Tel: (530) 478-1000  
After Hours: (530) 888-3195  
E-mail: info@sierravideo.com  
Online: www.sierravideo.com

### KRAMER ELECTRONICS, Ltd.

3 Am VeOlamo St.  
Jerusalem, 95463, Israel  
Tel: + 972 2 654 4000  
Fax: + 972 2 653 5369  
E-mail: info@kramerel.com  
Web: www.kramerelectronics.com

### KRAMER ELECTRONICS USA, INC. HEADQUARTERS

96 Route 173 West Suite 1  
Hampton, NJ 08827  
Tel: (908) 735 0018  
(888) 275 6311  
Fax: (908) 735 0515  
E-mail: info@kramerus.com  
Web: www.kramerus.com

### SIERRA VIDEO SYSTEMS HEADQUARTERS

PO Box 2462  
Grass Valley, CA, 95945, USA  
Sales Outside the US and Canada:  
Tel: (530) 478-1000  
Fax: (530) 478-1105  
Sales Inside the US and Canada:  
Tel: (888) 886-8875  
Fax: (530) 478-1700  
Tech Support – Worldwide:  
Tel: (530) 478-1000  
After Hours: (530) 888-3195  
E-mail: info@sierravideo.com  
Online: www.sierravideo.com

### KRAMER ELECTRONICS EUROPE SA

Rue du Bosquet, 12  
NIVELLES (SUD), 1400, Belgium  
Tel: + 67 49 34 10  
Fax: + 67 49 34 29  
E-mail: kramee@skynet.be

### KRAMER ELECTRONICS UK, Ltd.

Unit 21, Farmbrough Close  
Stocklake Park Industrial Estate,  
Aylesbury, Bucks HP20 1DQ,  
United Kingdom  
Tel: + 44 1296 330011  
Fax: + 44 1296 330055  
E-mail: info@kramerelectronics.co.uk  
Web: www.kramerelectronics.co.uk

### KRAMER ELECTRONICS FRANCE S.A.R.L.

Z.I de la Bonde - Parc de la Roseraie - Bat F  
15 rue du Buisson aux Fraises,  
91300 Masy  
Tel: + 33 (0) 1 69 75 29 80  
Fax: + 33 (0) 1 60 11 76 94  
E-mail: info@kramerfrance.com  
Web: www.kramerfrance.com

### KRAMER ELECTRONICS ITALIA S.R.L.

Via Cesare Cantù, 25  
20092 Cinisello Balsamo (MI)  
Tel: + 39 02 66594771  
Fax: + 39 02 61296221  
Cell: + 39 3387999739  
E-mail: info@krameritalia.com  
Web: www.krameritalia.com

### KRAMER ELECTRONICS ESPAÑA S.L.

Av. De Aragón 334  
28022 Madrid  
Tel: + 34 917478410  
Fax: + 34 917473409  
E-mail: info@kramerspain.com  
Web: www.kramerspain.com

### KRAMER ELECTRONICS GERMANY GMBH

An Fürthenrode 59  
52511 Geilenkirchen  
Tel: + 02451 91161 0  
Fax: + 02451 91161 10  
info@kramergermany.com  
www.kramergermany.com

### KRAMER ELECTRONICS SWEDEN AB

Energigatan 4,  
Kungsbacka 37 434  
Tel: + 46 300 43 18 10  
Fax: + 46 317 23 91 01  
E-mail: info@kramersweden.com  
Web: www.kramersweden.com

### KRAMER ELECTRONICS POLSKA SP. Z O.O.

ul. Okrzei 1 A  
03 -715 Warszawa, Poland  
Tel: + 48 22 333 80 31  
Fax: + 48 22 333 80 30  
E-mail: info@kramerpoland.com  
Web: www.kramerpoland.com

### KRAMER ELECTRONICS CANADA

3465 Mainway, Unit #3  
Burlington, Ontario  
L7M 1A9  
Tel: 1-866-726-9921  
(905) 592-9739  
Fax: (905) 592-9762  
E-mail: info@kramercanada.ca  
Web: www.kramercanada.ca

### KRAMER ELECTRONICS RUSSIA

Moscow, Russia  
Tel/Fax: +7 495 7800302  
E-mail: info@kramer.ru  
Web: www.kramer.ru

### KRAMER ELECTRONICS MEXICO

Heriberto Frías # 918  
Col. Del Valle, C.P. 03020  
Ciudad de México  
Tel: +52 (55) 5523-0604  
+52 (55) 5523-0629  
Fax: +52 (55) 5543-5945  
Web: www.kramermexico.com

### KRAMER DO BRASIL COMÉRCIO DE ELETRÔNICOS LTDA

Rua José Getúlio, 579, cj 25, Acimação  
São Paulo, SP, 01509-001, Brasil  
Tel: + 55-11-2167-5722  
E-mail: fernando@kramerbrazil.com  
Web: www.kramerbrazil.com

### KRAMER ELECTRONICS ARGENTINA

Tel: + 54 (11) 6698 1275  
+ 54 (11) 15 6398 7576  
E-mail: info@kramerargentina.com  
Web: www.kramerargentina.com

### KRAMER ASIA PACIFIC Pte, Ltd.

701 Sims Drive, #05-02 LHK Building  
Singapore 387383  
Tel: + 65 62 744474  
Fax: + 65 62 744414  
E-mail: kap@kramerasia.com  
Web: www.kramerasia.com

### KRAMER ELECTRONICS AUSTRALIA Pty, Ltd.

Unit 4/42 Clinker St.  
QCL Industrial Park DARRA QLD 4076,  
Australia  
Tel: + 61 7 37 15 6200  
Fax: + 61 7 37 15 6100  
E-mail: sales@krameraustralia.com.au  
Web: www.krameraustralia.com.au

### KRAMER ELECTRONICS CHINA

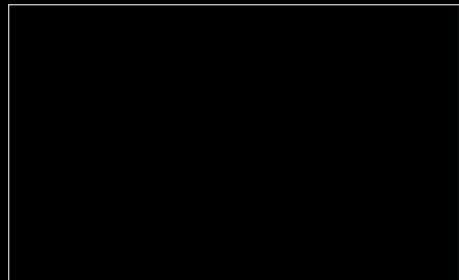
1204, Kuenyang International Business Plaza  
798 Zhaojabang Road,  
Shanghai 200030, China  
Tel: + 86 21 64453139,  
+ 86 21 64453136  
Fax: + 86 21 64455934  
E-mail: info@kramerschina.com  
Web: www.kramerschina.com

### KRAMER ELECTRONICS KOREA

#201 HyeopSung Bldg  
309-148, Seongsu-dong 2Ga,  
Seongdong-gu  
Seoul, Korea  
Tel: + 82 2 467 4747  
Fax: + 82 2 467 4750  
E-mail: info@kramerkorea.com  
Web: www.kramerkorea.com

### KRAMER ELECTRONICS INDIA PVT. LTD.

18/10, 2nd Floor, Saleh Centre,  
Cunningham Road,  
Bangalore-560052, India,  
Email: sales@kramerindia.com  
Tel: +91 80 4148 5388  
Fax: +91 80 4148 5387



© 2008 Sierra Video Systems. All rights reserved. Reproduction in whole or in part without written permission is prohibited. G.R.I.P., Matrix Mapping, Qwik Adjust Knob, Sierra PRO, Sierra Pro XL, Trade In – Trade Up, TyLinX, and Video Follow Sync are trademarks of Sierra Video Systems.