

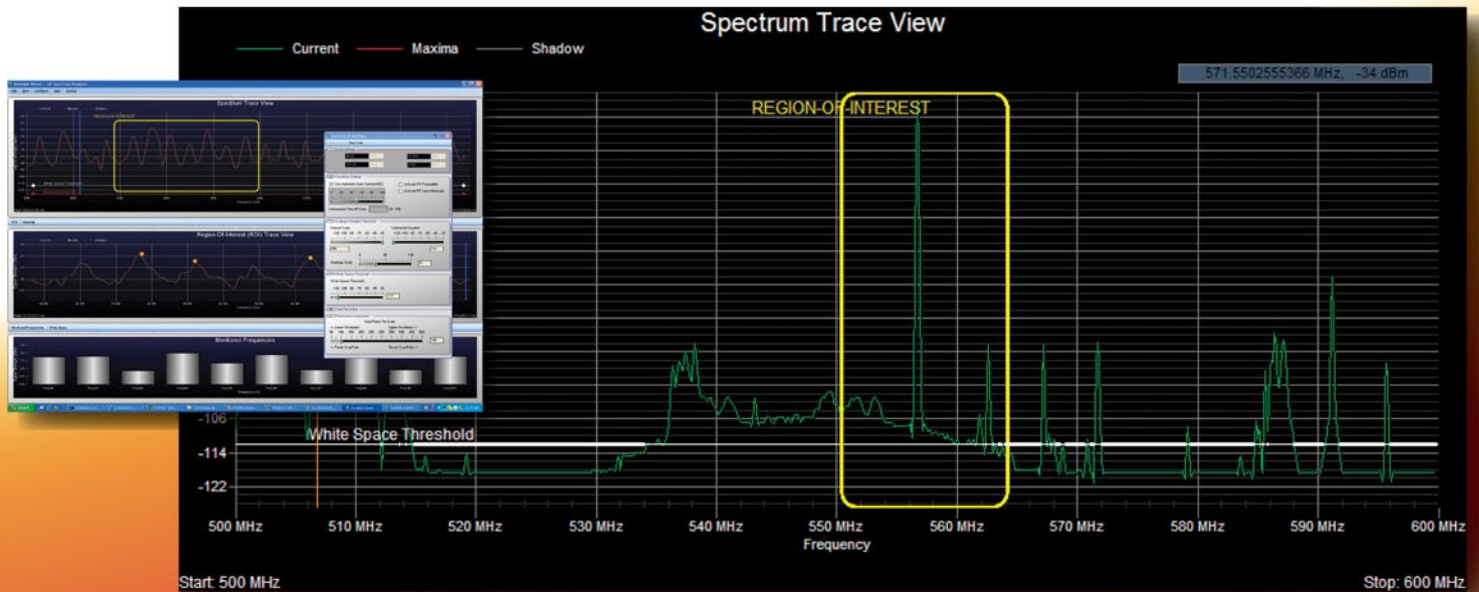
White Space Finder!

PC-Based, RF Spectrum Analyzers



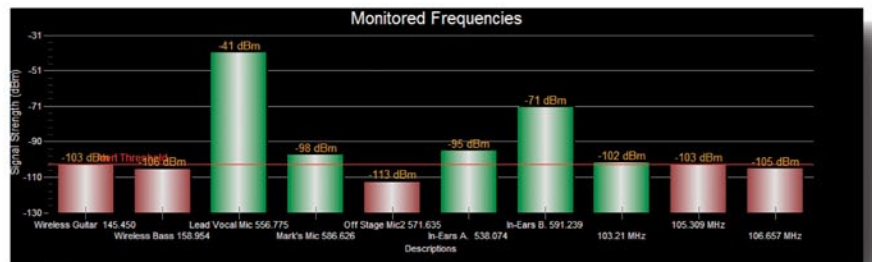
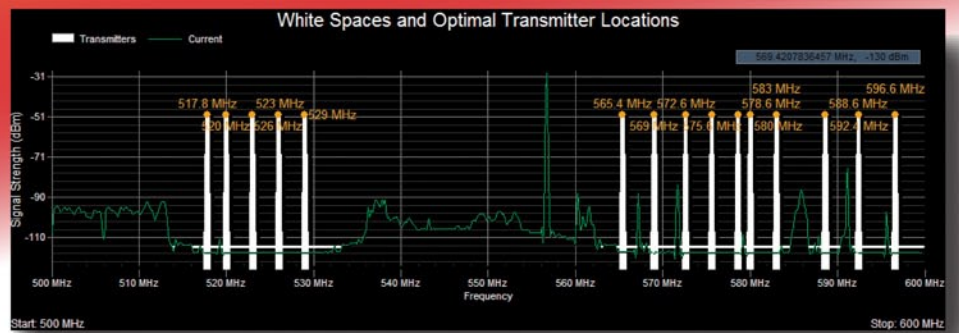
WIRELESS...

Microphones • In-Ear Monitoring • Remote Control • Assisted Listening • Lighting Control • Security • CCTV • Live Production Site Surveys • Interference Troubleshooting



Highlights

- Audio Engineer Friendly
- RF White Space Finder
- Split-Screen Displays
- Spectral & Data Logging
- Unlimited Screen Markers
- Priority Frequencies Monitor
- Instant-Save Custom Profiles
- Instant Screen Print Functions
- 5-Hour Battery + AC
- Models to 3.5GHz



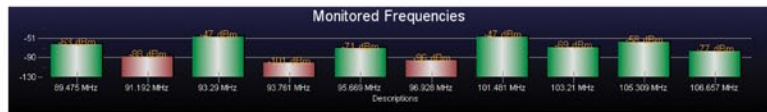
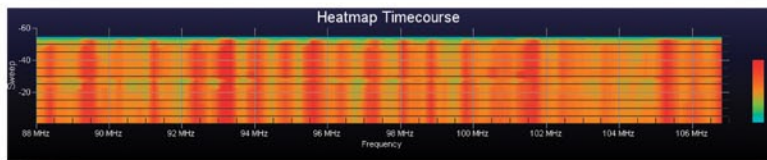
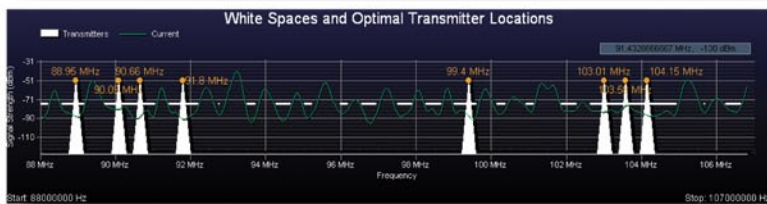
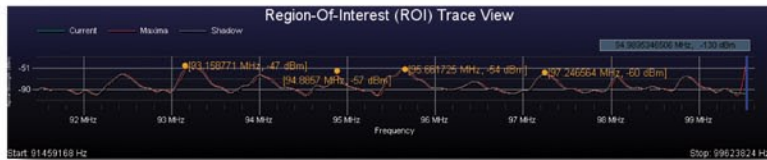
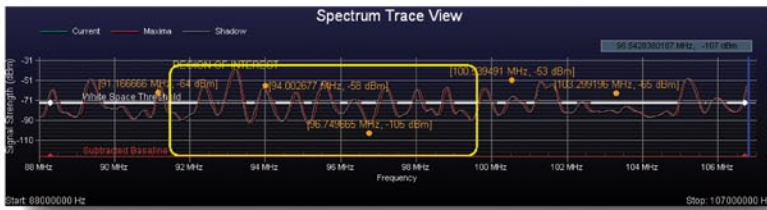
Invisible Waves 

"Your Affordable Answer to the RF CRUNCH"

Invisible Waves

PC-Based RF Spectrum Analyzers

"Your Affordable Answer to the RF CRUNCH"



**- Attention -
Wireless Microphone Users**

Professional audio & video wireless users are getting "squeezed-out" with the FCC's UHF band reallocations. Finding interference-free channels can be a challenge, and will only become more challenging as time goes on. The Invisible Waves, PC-Based RF Spectrum Analyzers, offer features and functions specifically tailored for the Professional AV Wireless user.

2 Models to Choose From

The IW1800 covers the frequency span of 9KHz to 1.8GHz making it ideal for VHF and UHF analysis and extending into the lower gigahertz ranges. If you need RF analysis above 1.8GHz, the next model is the Invisible Waves model IW3500 which covers the span of 9KHz to 3.5GHz.

System Packages Include:

- Electronics / Receiver Package
- Built-in Rechargeable Battery Pack
- AC Adaptor / Charger
- Multiple antennas
- USB to PC Connection Cable
- High-impact Carrying Case

Invisible Waves General Specifications*

IW1800 1KHz - 1.8GHz
 IW3500 1KHz - 3.5GHz
 Level Range (typical): -130dbm to 0dbm
 Filter Bandwidth: 1KHz - 50MHz
 10PPM Frequency Stability
 Accuracy (typical): +/- 3dB
 PC Interfaces: USB 2.0
 Antenna Interface: 50 Ohm SMA
 Receiver - DDS Based, Superheterodyne
 Battery: Full Charge 4-7 hours

*Specifications subject to change without notice

Site Surveys
Product Selections
Frequency Selections
Interference Abatement
Dead Spot Identification
Frequency Coordination

Invisible Waves 

Kaltman Creations LLC
 "First to Market" Solutions

www.RFAnalyzers.com

Software development in conjunction with Nuts About Nets LLC