

Roland®

V-Bass VB-99



V-Bass

V-Bass

VB-99 *GK COSM V-LINK*  *D BEAM* *USB AUDIO*

Stunning New Possibilities in Bass Recording and Performance.

When Roland first introduced the original V-Bass System, serious bass players worldwide took note. This system was like nothing before: it accurately modeled the world's most popular basses — from classic electrics to upright acoustic bass, fretless bass and more — and combined them with a range of killer bass amps, synth sounds, and polyphonic effects. With COSM® Bass technology and the special GK-3B Divided Pickup for Bass, the V-Bass opened up a world of new sonic possibilities.

Introducing the New VB-99 V-Bass

Today, we are proud to introduce the all-new V-Bass VB-99, which delivers three times the sonic firepower of the original model! Based on an all-new custom processing engine and 10 years of R&D, the V-Bass serves up a wide range of inspiring new COSM bass and amplifier models, powerful polyphonic effects, new String Modeling technology, dual independent signal paths for blending sounds, new controllers, and a host of thoughtful improvements that bassists demanded. Better still, it's all packaged in a smaller, more convenient format that's ideal for both tabletop recording and on-stage use.

■ Typical Parameters of the COSM BASS

| | | |
|---------------------------------|---|---|
| Modeling Type | Electric Bass | • VINT JB • JB • VINT PB • PB • M-MAN • RICK • T-BIRD • ACTIVE • VIOLIN |
| | Acoustic Bass | • VARI |
| | Synthesizer | • ANALOG GR • WAVE SYNTH • OSC SYNTH • FILTER • BOWED • PIPE |
| | Electric Guitar | • CRYSTL (Crystal) • ORGAN • BRASS |
| Parameters of the Electric Bass | • Master Volume • Rear Volume • Front Volume • Balance • Rear Tone • Front Tone • Treble • Bass • Rhythm/Solo • Control Type • Pickup Select • Rear Pickup • Front Pickup • Position • Phase • Offset | • ST (Stratocaster) • LP (Les Paul) |

■ Typical Parameters of the COSM AMP

| | | |
|--------------|----------------|---|
| Preamp Type* | SUPER FLAT | An amp with flat response |
| | FLIP TOP | Models the Ampeg B-15 |
| | B MAN | Models the Fender Bassman 100 |
| | CONCERT 810 | Models the Ampeg SVT |
| | BASS 360 | Models the Acoustic 360 |
| | T-B | Models the Trace Elliot AH600SMX |
| | SESSION | Models the SWR SM-400 |
| | AC BASS | An amp ideal for ACOUSTIC BASS |
| | GTR AMP CLEAN | Clean sound that is smooth and warm |
| | GTR AMP CRUNCH | Crunch sound that can faithfully reproduce the nuances of playing |
| | GTR AMP DRIVE | Drive sound producing awesome distortion |
| | GTR AMP METAL | Metal sound suited to heavy riffs |

* The trademarks listed in this document are trademarks of their respective owners, which are separate companies from Roland.
* These companies are not affiliated with Roland and have not licensed or authorized Roland's VB-99.
* Their marks are used solely to identify the equipment whose sound is simulated by Roland's VB-99.

| | |
|--------------|--|
| Speaker Type | • Original • 1x15" • 1X18" • 2X15" • 4X10" • 8X10" |
|--------------|--|

■ Poly Effect

| |
|---|
| • Poly Compressor • Poly Limiter • Poly Defretter • Poly Distortion • Poly Equalizer • Poly Octave • Poly Ring Modulator • Poly Slow Gear • String Modeling |
|---|

■ Effects

| |
|--|
| • Compressor • Overdrive/Distortion • Equalizer • DELAY • CHORUS • PHASER • FLANGER • Tremolo • PAN • PEDAL WAH • Touch Wah • AUTO WAH • M-TRON III • OCTAVE • Pitch Shifter • HARMONIST • PEDAL BEND • 2x2 CHORUS • ROTARY • UNI-V • Vibrato • SLICER • HUMANIZER • SLOW GEAR • Ring Modulator • Anti-feedback • Advanced Compressor • Limiter • ENHANCER • Parametric Equalizer • Graphic Equalizer • SUB DELAY • Noise Suppressor • Foot Volume |
|--|

■ Type of Compressor

| |
|---|
| • BOSS COMP • D-COMP • BOSS LIMTR • RACK 160D • VTG RACK U • MULTI BAND • NATURAL |
|---|

■ Realtime Controller

| | |
|--------|---|
| D BEAM | • T-ARM • FREEZE • FILTER • ASSIGNABLE |
| RIBBON | • T-ARM • FILTER • ASSIGNABLE |
| V-LINK | • A ch/B ch PALETTE • A ch/B ch CLIP • ASSIGN 1-2 |

Dual Independent Signal Paths

The VB-99 sports dual independent signal paths, which greatly expands the sonic possibilities of this system. The two paths can be assigned to two distinct sounds (patches), and mixed and layered as desired. Sounds can be blended with a single knob, and even split or switched via playing dynamics. Imagine setting up a patch in which an electric bass morphs into a synth sound when you really dig in... or assigning an overdriven amp sound to your low B and E strings, and a lush, string-type sound to your A, D and G strings. The soundscapes are almost endless... and it's only possible with the VB-99 and its companion GK-3B pickup (which installs on most standard steel-string basses).



■ D BEAM controller

By simply waving your hand or bass neck over the invisible beam, you can change tone and pitch dynamically. It's a performer's dream, as dramatic gestures trigger dramatic tonal changes.

■ Large LCD for easy operation

A high-visibility, large-size LCD, easy-to-comprehend graphics, and function knobs and switches that correspond to the layout on the screen makes navigation and editing easy.

■ Ribbon controller

Move your finger up and down the ribbon strip to control tone and pitch. Instantaneous and continuous sound changes that cannot be accomplished with knobs or switches can be implemented easily.

■ Dynamic control

Allows you to switch between two separate sounds based on the dynamics of your picking.

■ BASS DIRECT

Setting BASS DIRECT to "on" enables you to output the direct bass sound at a single touch.

■ Clear signal flow

The VB-99's easy-to-read panel layout makes the 2-channel COSM configuration and signal flow easy to understand at just a glance. You can directly access the target block for fast, intuitive, and innovative sound making.

■ Synchronized sound and images

The V-LINK function brings a new dimension to performance by synchronizing sounds and images.

■ Direct patch retrieval

Frequently used patches can be stored for instantaneous selection.

■ Free balance mixing

The VB-99's dual COSM engines allow two-channel dynamic mixing.

■ Speedy shortcuts

Once the parameters are assigned, you can use NORMAL mode (jumps to maximum value when button is held, jumps to minimum value when button is released) or TOGGLE mode (switches between maximum and minimum values each time button is pressed).

■ BASS-TO-MIDI conversion

With the VB-99, you can play an external synthesizer from your bass guitar, and input the performance into an external sequencer as well.

■ GK in

Connect a bass guitar with a GK-3B divided pickup to access the full expressive powers of the VB-99, including its COSM Bass and amp models, and incredible polyphonic effects.

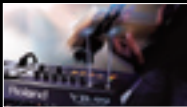


- 1 BASS (INPUT/OUTPUT)
- 2 SUB OUT (L/R)
- 3 MAIN OUTPUT (L/MONO, R)
- 4 PHONES
- 5 DIGITAL OUT
- 6 EXPRESSION PEDAL
- 7 CONTROL 3, 4
- 8 USB
- 9 RRC2 IN (for FC-300)
- 10 MIDI (IN/OUT)

Expressive Possibilities

In addition to more than twice the number of patches — including everything from classic and modern basses, to acoustic instruments, and the widest range of amps and effects — the VB-99 offers greater expressive possibilities thanks to a D BEAM Controller, a Ribbon Controller, and String Modeling.

■ **D BEAM** The assignable D BEAM controller allows a bassist to control his sound through hand gestures through an infrared beam of light. It's a great way to generate inspiring tones and wow an audience.



■ **Ribbon Controller** The onboard Ribbon controller is much like those found on keyboard synthesizers — perfect for tweaking a patch or getting just the right filter setting on a bass synth sound.



■ **V-LINK** V-LINK is Roland's proprietary format for controlling external video equipment, so visionary bassists can create soundscapes beyond just the music.



■ **String Modeling** String Modeling is new to the VB-99, enabling to convert "Round Wound" strings to "Flat Wound" or "Black Nylon" for enhanced bass performance.

A Simple, Intuitive Interface

Of course, all the V-Bass' power would mean nothing if it wasn't supremely easy to use in the widest variety of settings. That's why the VB-99 incorporates a large, bright 240 x 64 dot LCD, with tons of helpful graphics. There are also dedicated knobs and buttons for all major functions. So you can go from tweaking an amp model to adjusting global settings within seconds.



Bassist-Friendly Features

Since the introduction of the original V-Bass, players around the world have given us some great feedback. As a result, the VB-99's new "bassist-friendly" features include a BASS DIRECT input/output, for sending your normal bass output unchanged through the VB-99 — or blending it with the onboard sounds as desired. There's also an XLR output with ground lift switch for "going direct," either live or in the studio. Speaking of live, the VB-99 can be controlled with an optional foot controller, like the Roland FC-300, and it can be conveniently rack-mounted using an optional adaptor.

Perfect for Modern Recording Setups

With the VB-99's built-in USB audio/MIDI streaming capability, modern musicians can take full advantage of computer-based setups. Just connect a single USB cable from the back of the V-Bass directly to your Mac or PC. Then trigger other sounds (via MIDI) or record your V-Bass (via USB audio) using your DAW software and plug-ins (sold separately). Roland's V-Bass editing software (free downloadable) even lets you edit and save V-Bass sounds right from your computer.



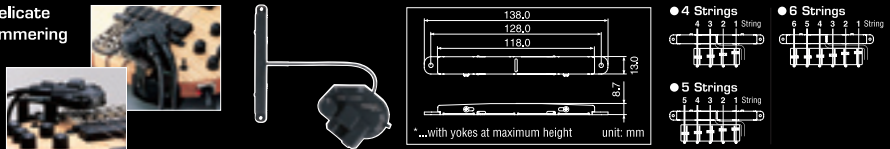
SPECIFICATIONS

■ AD Conversion 24 bits + AF method **■ DA Conversion** 24 bits **■ Sampling Frequency** 44.1 kHz **■ Program Memories** 400: 200 (User) + 200 (Preset) **■ Nominal Input Level** BASS INPUT: -10 dBu **■ Input Impedance** BASS INPUT: 2.2 M Ω
■ Nominal Output Level MAIN OUT: -10 dBu, SUB OUT (XLR): +4 dBu, BASS OUT: -10 dBu **■ Output Impedance** MAIN OUT: 1 k Ω , SUB OUT (XLR): 600 Ω **■ Dynamic Range** 100 dB or greater (IHF-A) **■ Controls** Top Panel: OUTPUT LEVEL knob, Function knobs x 6 (F1-F6), BALANCE knob, V-BASS LEVEL knob, V-LINK button, DIRECT PATCH buttons x 5 (1-5), CONTROL buttons x 2 (1, 2), COSM BASS buttons x 2 (A, B), BASS DIRECT button, POLY FX A/B buttons x 2 (A, B), FX buttons x 2 (A, B), COSM AMP buttons x 2 (A, B), MIXER buttons x 2 (A, B), DELAY/REVERB button, DYNAMIC button, CHAIN button, CONTROL ASSIGN button, NAME/KEY/BPM button, Function buttons x 6 (F1-F6), EXIT button, WRITE button, PAGE buttons x 2 (Left, Right), BASS TO MIDI button, SYSTEM button, GLOBAL button, TUNER button, CATEGORY button, PATCH/VALUE dial, Power switch, D BEAM (D BEAM Controller, PITCH button, FILTER button, ASSIGNABLE button), Ribbon Controller (Ribbon Controller, PITCH button, FILTER button, ASSIGNABLE button), Rear Panel: Ground Lift switch (SUB OUT) **■ Display** 240 x 64 dots graphic LCD (with backlight) **■ Connectors** Top Panel: GK IN connector (13-pin DIN type), Rear Panel: BASS INPUT jack (1/4" phone type), BASS OUTPUT jack (1/4" phone type), SUB OUT jacks x 2 (L, R) (XLR type), MAIN OUT jacks x 2 (L/MONO, R) (1/4" phone type), PHONES jack (Stereo 1/4" phone type), DIGITAL OUT jack (Coaxial type, conforms to IEC60958-3), EXP PEDAL jack (1/4" TRS phone type), CTL 3, 4 jack (1/4" TRS phone type), USB connector (B type), RRC2 IN connector (RJ45 type), MIDI connectors x 2 (IN, OUT) (5-pin DIN type), DC IN jack **■ Power Supply** AC Adaptor (PSB-1U) **■ Current Draw** 1.3 A **■ Dimensions** 384.0 (W) x 218.0 (D) x 93.5 (H) mm, 15-1/8 (W) x 8-5/8 (D) x 3-11/16 (H) inches * EIA-5U rack mount type: optional rack mount adaptor RAD-99 **■ Weight** 2.1 kg/4 lbs 11 oz (excluding AC Adaptor) **■ Accessories** Owner's Manual, GK cable (5 m), USB cable, RRC2 cable, VB-99 Software CD-ROM, AC adaptor (PSB-1U), Knob Bolt x 4 **■ Options** Divided Pickup: GK-3B, MIDI Foot Controller: FC-300, Footswitch: BOSS FS-5U, Dual Footswitch: BOSS FS-6, Expression Pedal: EV-5, BOSS FV-500L/500H, GK Cable: GK-10/5/3, Unit Selector: US-20, Rack Mount Adaptor: RAD-99, Pad Stand: PDS-10, Footswitch Cable: PCS-31, Carrying Bag: CB-VG9
 * 0 dBu = 0.775 V rms

OPTIONS

Divided-pickup technology

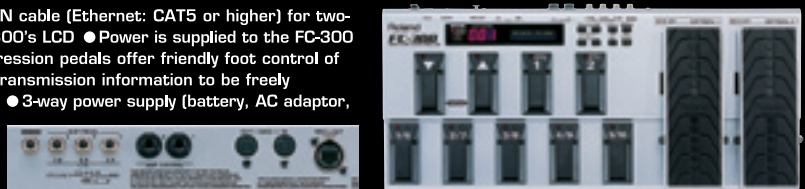
- Independent output from each string
- Capable of tracking every delicate nuance of bass guitar performance, such as choking, vibrato, and hammering
- Output from the bass guitar's own pickups can be used as usual; combine sound from the bass guitar with the V-BASS
- Easily installable on your favorite bass guitar



Divided Pickup for Bass Guitar **GK-3B** *GK*

VB-99 & FC-300, the perfect combination for live performance Two-way communication via RRC2 connection

- Connect the optional FC-300 to the VB-99's RRC2 connector with a single LAN cable (Ethernet: CAT5 or higher) for two-way communication of a variety of data, such as patch-names display on the FC-300's LCD
- Power is supplied to the FC-300 from the VB-99 through the RRC2 connection
- 9 pedal switches and dual expression pedals offer friendly foot control of patch switching, volume, and various parameters
- Patch Mode enables MIDI transmission information to be freely manipulated
- Two sets of special terminals for channel control of the bass amp
- 3-way power supply (battery, AC adaptor, and RRC2 connection)

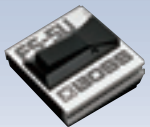


MIDI Foot Controller **FC-300**

- Controls Number Pedal x 5 (1/6, 2/7, 3/8, 4/9, 5/10), DOWN/UP Pedal, Control Pedals (CTL 1, CTL 2), Expression Pedals (EXP PEDAL 1, EXP PEDAL 2), PARAMETER Buttons (Left, Right), VALUE Buttons (Down, Up), UTILITY Button, MODE Button, EXIT Button, WRITE Button, POWER Switch
- Display 7 segments, 3 characters (LED), 16 characters, 2 lines (backlit LCD)
- Indicators MODE Indicator (STANDARD, CONTROL, SYS EX, PATCH), UTILITY Indicator, WRITE Indicator, Number Indicators (1 to 10), DOWN/UP Indicators, Control Indicators (1, 2), Expression Pedal Switch ON/OFF Indicators (1, 2)
- Connectors AC Adaptor Jack (DC IN), MIDI IN Connector, MIDI OUT Connector, RRC2 OUT Connector, AMP CONTROL 1 Jack, AMP CONTROL 2 Jack, EXP Pedal 3/CTL 3, 4 Jack, EXP Pedal 4/CTL 5, 6 Jack, EXP Pedal 5/CTL 7, 8 Jack, MODE Jack
- Power Supply 9 V DC: AC Adaptor (PSA-series), Dry battery R6 (AA) type (carbon) x 6 or LR6 (AA) type (alkaline) x 6, RRC2 (supplied from RRC2 device)
- Dimensions 550 (W) x 250 (D) x 76 (H) mm, 21-11/16 (W) x 9-7/8 (D) x 3 (H) inches
- Weight 5.2 kg/11 lbs 8 oz (excluding AC adaptor and batteries)
- Options AC Adaptor PSA-series (BOSS), Footswitch: FS-5U (BOSS), FS-5L (BOSS), FS-6 (BOSS), Expression Pedal: EV-5, FV-500H (BOSS), FV-500L (BOSS)

Footswitch **FS-5U**

BOSS



Dual Footswitch **FS-6**

BOSS

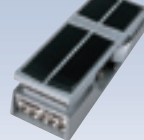


Expression Pedals **EV-5**



Foot Volume **FV-500L**

BOSS

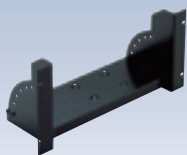


Unit Selector **US-20**

GK



Rack Mount Adaptor **RAD-99**



Pad Stand **PDS-10**



Carrying Bag for VB-99 and FC-300 **CB-VG9**



GK Cables

GKC-3 (3m/118-1/8 inch) *GK*

GK Cables

GKC-5 (5m/196-7/8 inch) *GK*

GK Cables

GKC-10 (10m/393-3/4 inch) *GK*



Footswitch Cable

PCS-31 (2.2m/7-7/8 inch)

GK

The power behind Roland's GK gear lies in the GK-3/3B Divided Pickup. This unique pickup provides an individual output for each string — crucial for accurate synth tracking, advanced pickup and guitar modeling, and precise pitch-to-MIDI conversion. Once the GK-3/3B has been attached to a steel-stringed electric guitar, acoustic guitar or bass guitar — or purchased as part of a special "Roland-Ready" guitar — users can tap into the amazing polyphonic pitch-shifting power, COSM™ Guitar Modeling, and synthesis power of Roland's GK-Ready gear. *Note that the GK-3 and GK-3B's functions vary between different GK gear. Please check the specifications for Roland's GK-Ready gear to see what types of effects are possible.

COSM

Once a musical instrument generates sound vibrations, it reaches the human ear through various mediating objects, each of which significantly affects the sound. The material and configuration of the instrument, the electric/magnetic amplifying system, the air and the reverberation of the room all affect the final sound. Sound modeling, the latest DSP technology, "virtually" reconstructs these objects. Roland's breakthrough Composite Object Sound Modeling (COSM) uses the advantages of multiple modeling methods and succeeds in accurately emulating existing sounds, as well as producing sounds that have never before been created.

V-LINK

Using V-LINK, musicians can "play" video from their electronic instrument — or even control a live video camera — when used with Ediol video products. With V-LINK, musicians have a powerful interface for realtime audio and video integration.